

EWART UNIT NO. 8
WATERFLOOD EOR PROJECT
ANNUAL REPORT FOR 2014

May 26, 2015

Tundra Oil and Gas Partnership

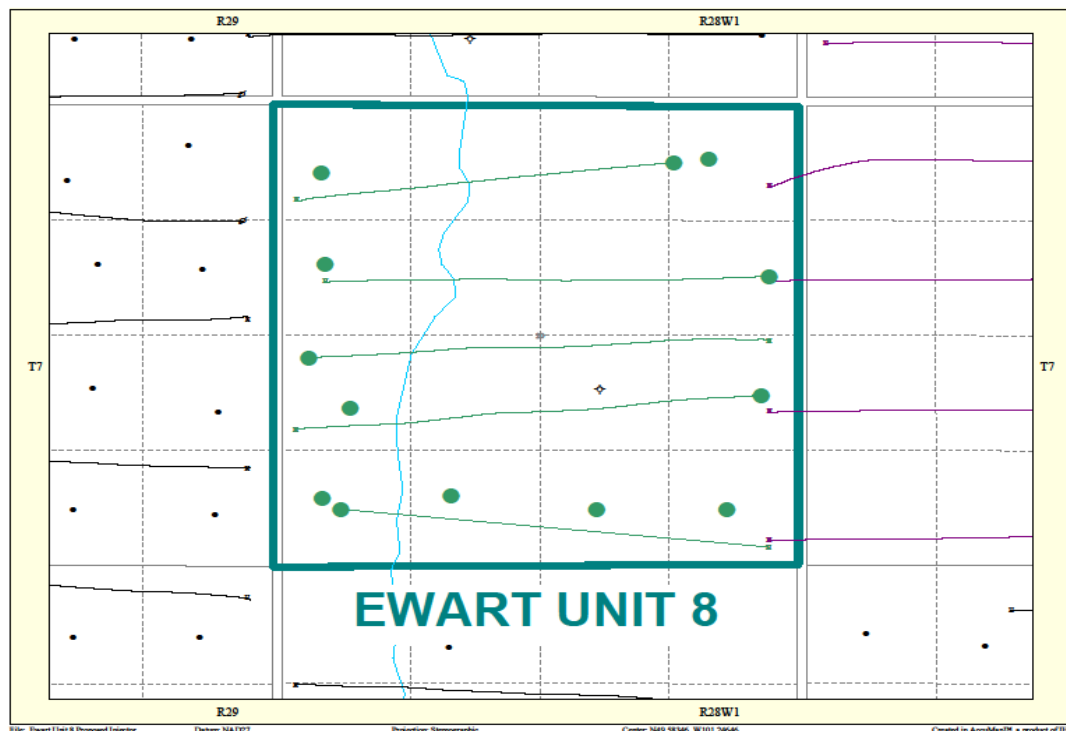
Table of Contents

INTRODUCTION.....	3
DISCUSSION.....	3
Production History	3
Waterflood History.....	5
Waterflood EOR Operating Strategy and Performance	6
Water Source and Quality	6
Injection Wellhead Pressures	6
Reservoir Pressure	6
Well Servicing	6
Waterflood Performance Discussion	6
List of Appendices.....	7
Appendix A: Well List and Well Status	
Appendix B: Ewart Unit No. 8 Injection Pattern Summary	
Appendix C: Ewart Unit No. 8 Reservoir Pressure Survey Data Summary	
Appendix D: Injector Pattern Production/Injection Rates, Cumulative and VRR	
Plot and Table	

INTRODUCTION

Ewart Unit No. 8 Enhanced Oil Recovery (EOR) Waterflood Project was approved effective October 1st, 2014 with Tundra Oil and Gas as Operator. The EOR project area, outlined in green in Figure 1, contains 2 horizontal wells waiting on completion, 8 vertical and 3 horizontal producing wells in 16 LSDs in Township 7, Range 28W1. Well list and well status is available in Appendix A.

Figure 1: Ewart Unit No. 8 Area Outline



In accordance with Section 73 of the Manitoba Drilling and Production Regulation, Tundra submits the following 2014 Annual Progress Report for Ewart Unit No. 8.

DISCUSSION

Production History

For the wells included in Ewart Unit No. 8, production started in December 2004 with the 00/13-20-007-28W1/00 well. Oil production peaked at 42.8 m³/d in March of 2009. In 2014, the average production for the unit was 7.92 m³/d of oil and 5.21 m³/d of water, and the average WOR was 0.66 m³/m³. There is currently no water injection in Ewart Unit No. 8. The rates and WOR are presented in Figure 2.

Figure 2: Ewart Unit No. 8 Production/Injection Rates and WOR vs. Time

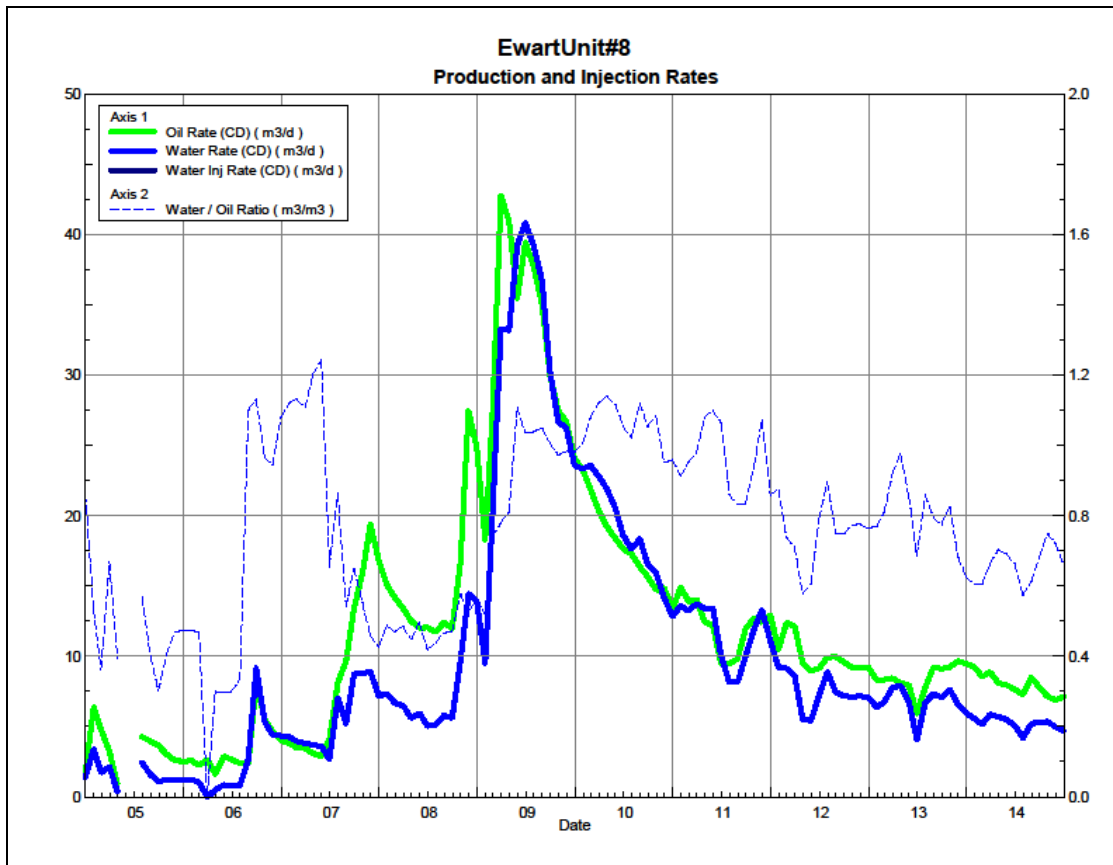
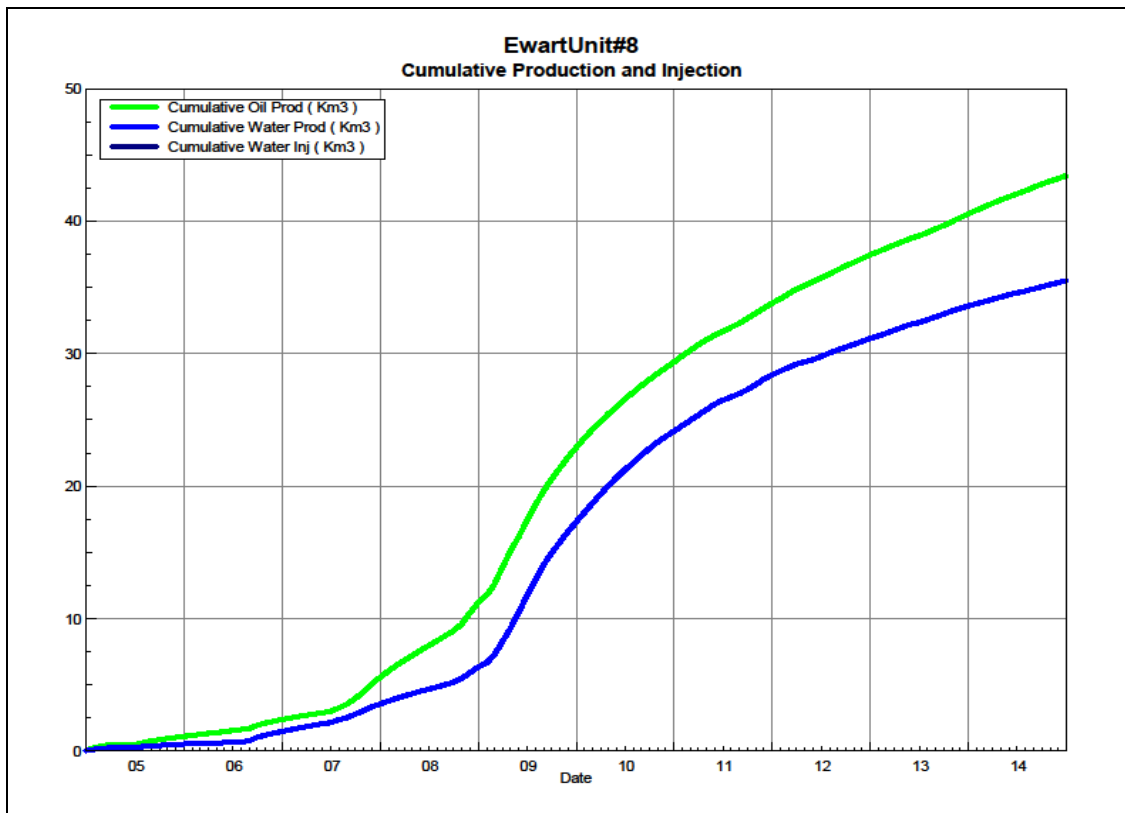


Figure 3 shows the cumulative production for Ewart Unit No. 8 to the end of December 2014 as 43.4 e³m³ of oil and 35.5 e³m³ of water, representing a 7.0% recovery factor of the OOIP.

Figure 3: Ewart Unit No. 8 Cumulative Oil, Water and Water Injected vs. Time



Waterflood History

Ewart Unit No. 8 is still in the development phase at the end of 2014. The 00/08-20 and, 00/09-20-007-28W1 wells are existing producers that will be converted to injectors in Q1 2015. An inter-unit horizontal well was drilled at 02/04-20-007-28W1/0 (02/04-20) in December 2014. All of the horizontal wells are fracture stimulated to improve the injection rates. In order to maximize recovery from this Unit, Tundra expects to produce all of the injectors for a short period of time to clean-up the reservoir near the wellbores prior to being converted into water injectors.

Production performance by injector pattern are summarized in Appendix B.

Any future revisions to the waterflood development or surveillance plan would be based on new production or performance response data, technical studies, or observed reservoir behavior and reserves recovery interpretations.

Waterflood EOR Operating Strategy and Performance

Water Source and Quality

The injection water for Ewart Unit No. 8 will be sourced from the 16-32-007-29W1 well (Lodgepole formation). The water is treated at the 03-04-007-29W1 battery where it is filtered to 0.5 microns and has scale inhibitor added. The injection water is then distributed to the injectors through the dedicated infrastructure system.

Injection Wellhead Pressures

No wellhead injection pressure is available for Ewart Unit No. 8.

Reservoir Pressure

Where practical, Tundra is committed to collecting pressure data from newly drilled injection wells. For Ewart Unit No. 8, pressure data is currently available for the 02/04-20 location. A summary table is presented in Appendix C. Pressures are corrected to a common datum of -450 m SS for comparison with other units in the area.

Well Servicing

No maintenance was required on the 13 wells in Ewart Unit No. 8 in 2014.

Waterflood Performance Discussion

At the end of 2014, there is currently no water injection in Ewart Unit No. 8. Tundra intends to convert the two horizontal producers, 00/08-20 and 00/09-20-007-28W1, to injection in 2015 as well as drill another horizontal producer at 03/05-20-007-28W1 within Ewart Unit No. 8. This unit will have a combination of waterflood patterns at 20 acre and 40 acre spacing having utilized the existing horizontal and vertical wells in the area. The waterflood area also had an inter-unit injection well drilled in 2014 at 02/04-20, which is currently on production.

A summary table of the injector pattern(s) is presented in Appendix B. Plots of the production are presented in Appendix D for each of the injection pattern(s).

List of Appendices

Appendix A: Well List and Well Status

Appendix B: Ewart Unit No. 8 Injection Pattern Summary

Appendix C: Ewart Unit No. 8 Reservoir Pressure Survey Data Summary

Appendix D: Injector Pattern Production/Injection Rates, Cumulative and VRR

Plots and Tables for the following injectors:

00/08-20-007-28W1/0

00/09-20-007-28W1/0

02/04-20-007-28W1/0 (Inter-unit Injector)

Appendix A

UWI	Well Status
100/01-20-007-28W1/00	Capable of OIL Prod
100/02-20-007-28W1/00	Capable of OIL Prod
100/03-20-007-28W1/00	Capable of OIL Prod
100/04-20-007-28W1/00	Capable of OIL Prod
102/04-20-007-28W1/00	Completing
102/05-20-007-28W1/00	Capable of OIL Prod
103/05-20-007-28W1/00	Completing
100/08-20-007-28W1/00	Capable of OIL Prod
100/09-20-007-28W1/00	Capable of OIL Prod
100/12-20-007-28W1/00	Capable of OIL Prod
100/13-20-007-28W1/00	Capable of OIL Prod
100/16-20-007-28W1/00	Capable of OIL Prod
102/16-20-007-28W1/00	Capable of OIL Prod

Appendix B

Ewart Unit No. 8 Pattern Summary as of December 2014

Pattern Name	Injector Location (007-28W1)	Status	No. of Supported Wells	Supported Wells (007-28W1)	Allocation Factor	Pattern Prod Start Month	Inj Start Month	Oil Rate (m³/d)	Water Rate (m³/d)	WOR (m³/m³)	Water Injection (m³/d)	Cum Oil Water (E³m³)	Cum Inj Water (E³m³)	Monthly VRR	Cum VRR
00/08-20-007-28 Injector	00/05-20	Capable of Oil Production	6	01-20, 02-20, 03-20, 04-20, 03/05-20 02/05-20	0.5 1.0	Aug 2006	-	2.93	1.79	0.61		14.4	13.1	0.0	0.00
00/09-20-007-28 Injector	00/12-20	Capable of Oil Production	5	03/05-20 12-20, 13-20, 16-20, 02/16-20	0.5 1.0	Dec 2004	-	3.66	2.46	0.67		24.7	19.1	0.0	0.00
02/04-20-007-28 Inter-Unit Injector	02/01-20	Completing	8	13-17, 14-17, 15-17, 16-17 01-20, 02-20, 03-20, 04-20	0.5	Aug 2006	-	3.78	1.20	0.32		17.1	7.0	0.0	0.00

APPENDIX C

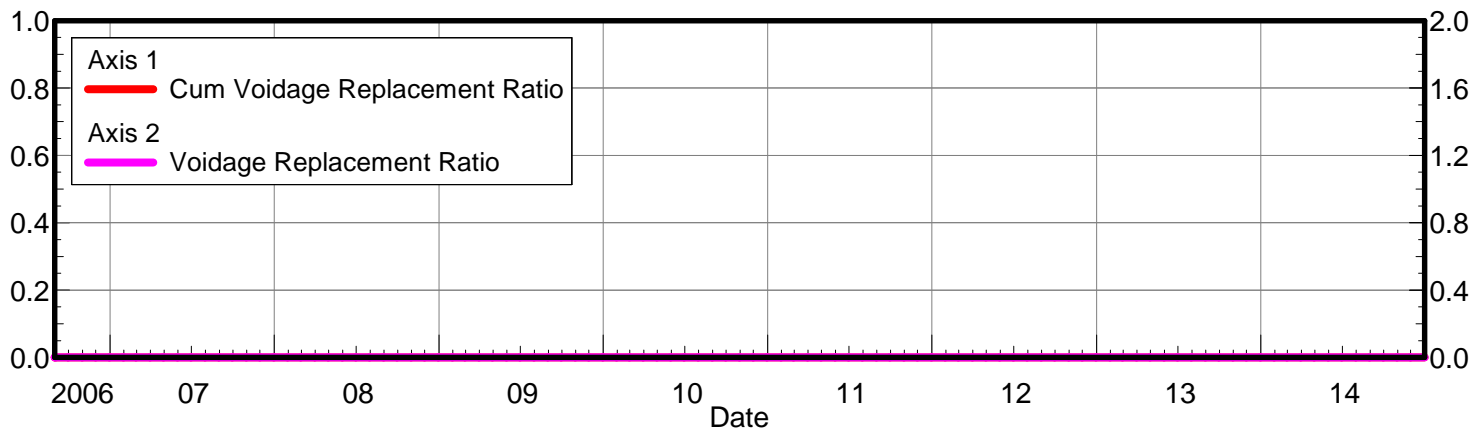
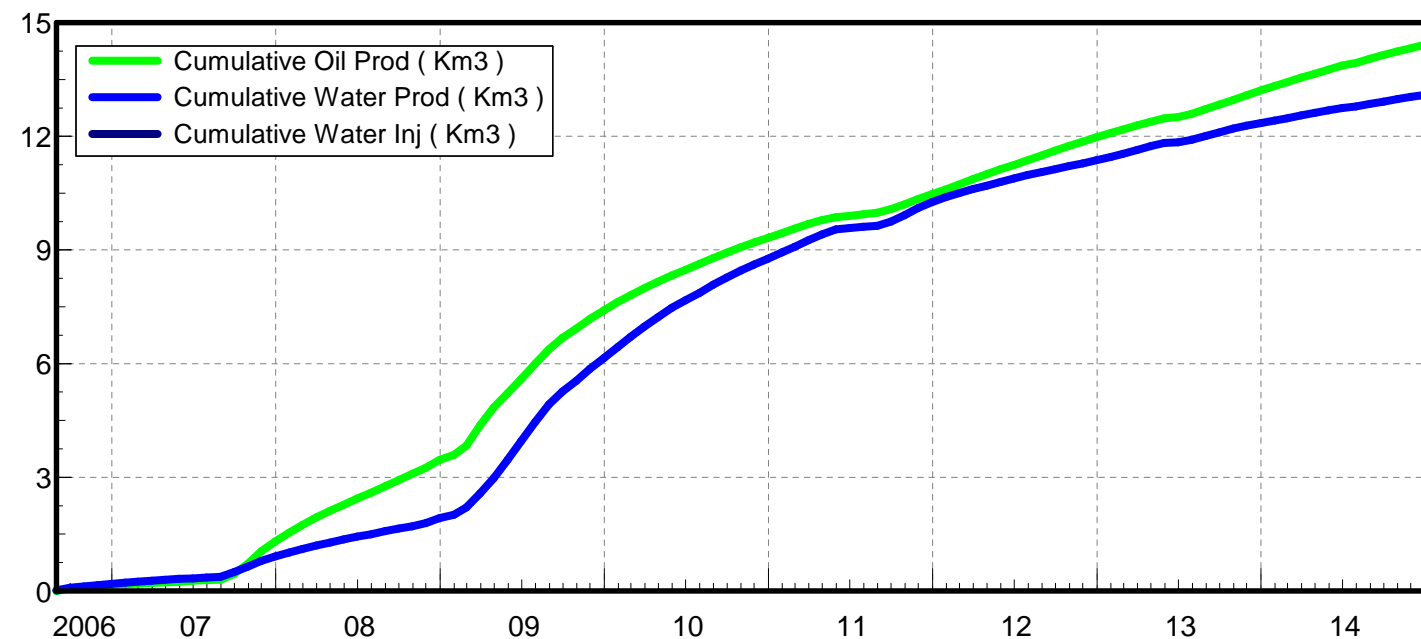
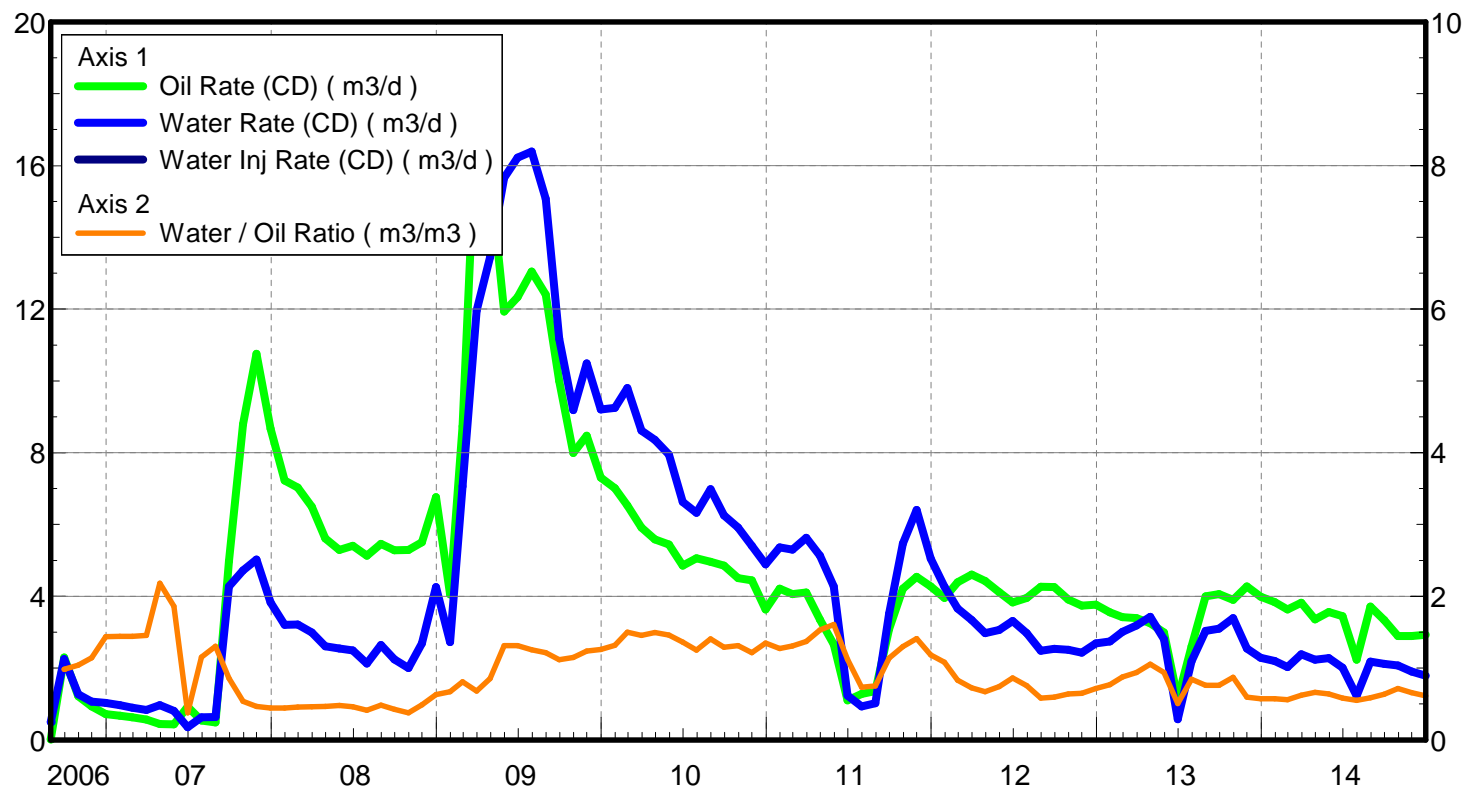
Ewart Unit No. 8 - Pressure Summary

Location	Test Date	Final Pressure (kPaa)	MPP (mTVD)	KB	Datum Depth	Gradient	Pressure @ -450 masl
102/04-20-007-28W1/0	Dec 15th - Jan 21st, 2015	5314.8	952.4	498.3	-450	8.25	5281

Appendix D

Rates and VRR Plots

Oil Formation Vol Factor : 1.00150 m³/m³ Pattern: 00/08-20-007-28Inj Set: EwartUnit#8 Oil Rate (CD) : 2.93 m³/d
 Water Formation Vol Factor : 1.00150 m³/m³ May 25, 2015 Water Rate (CD) : 1.79 m³/d
 Water / Oil Ratio : 0.61 m³/m³ Operator: Tundra_O&G_Prtshp Water Inj Rate (CD) : * m³/d

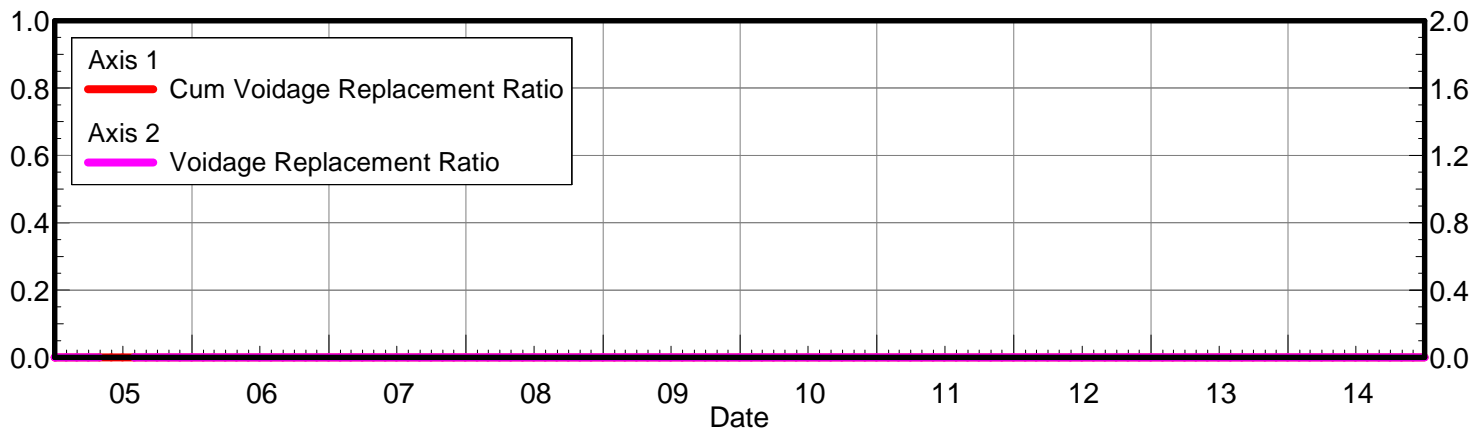
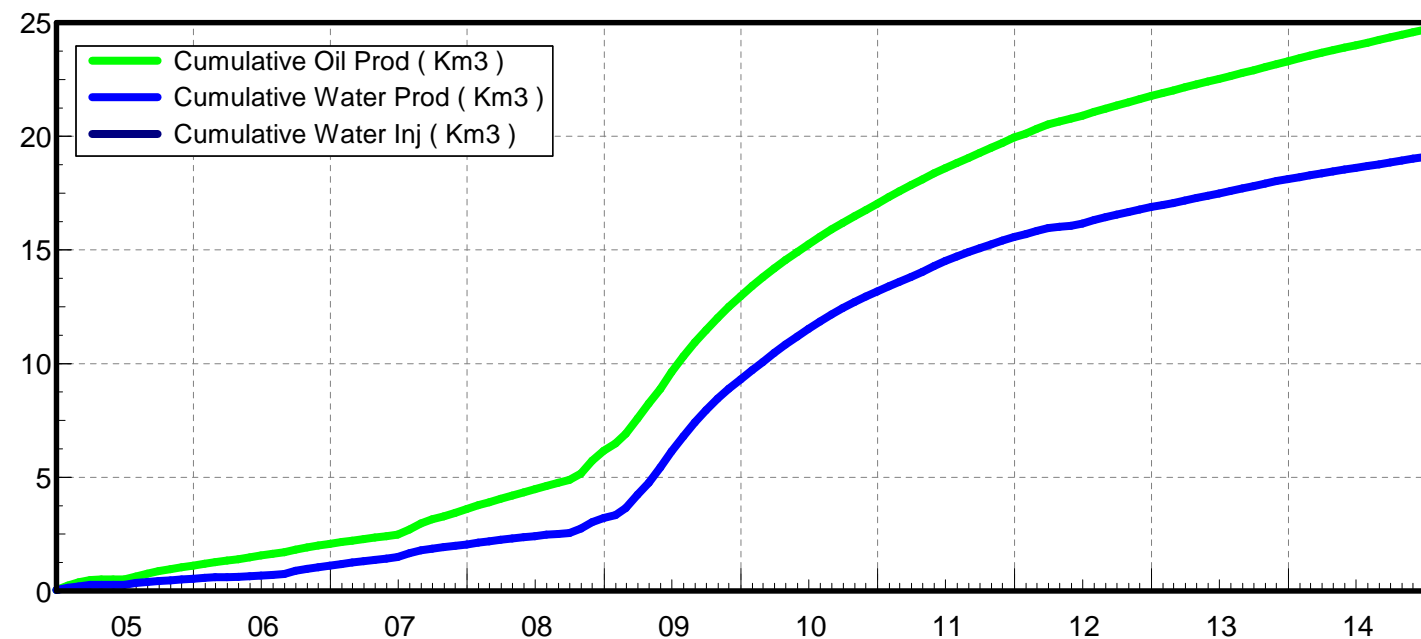
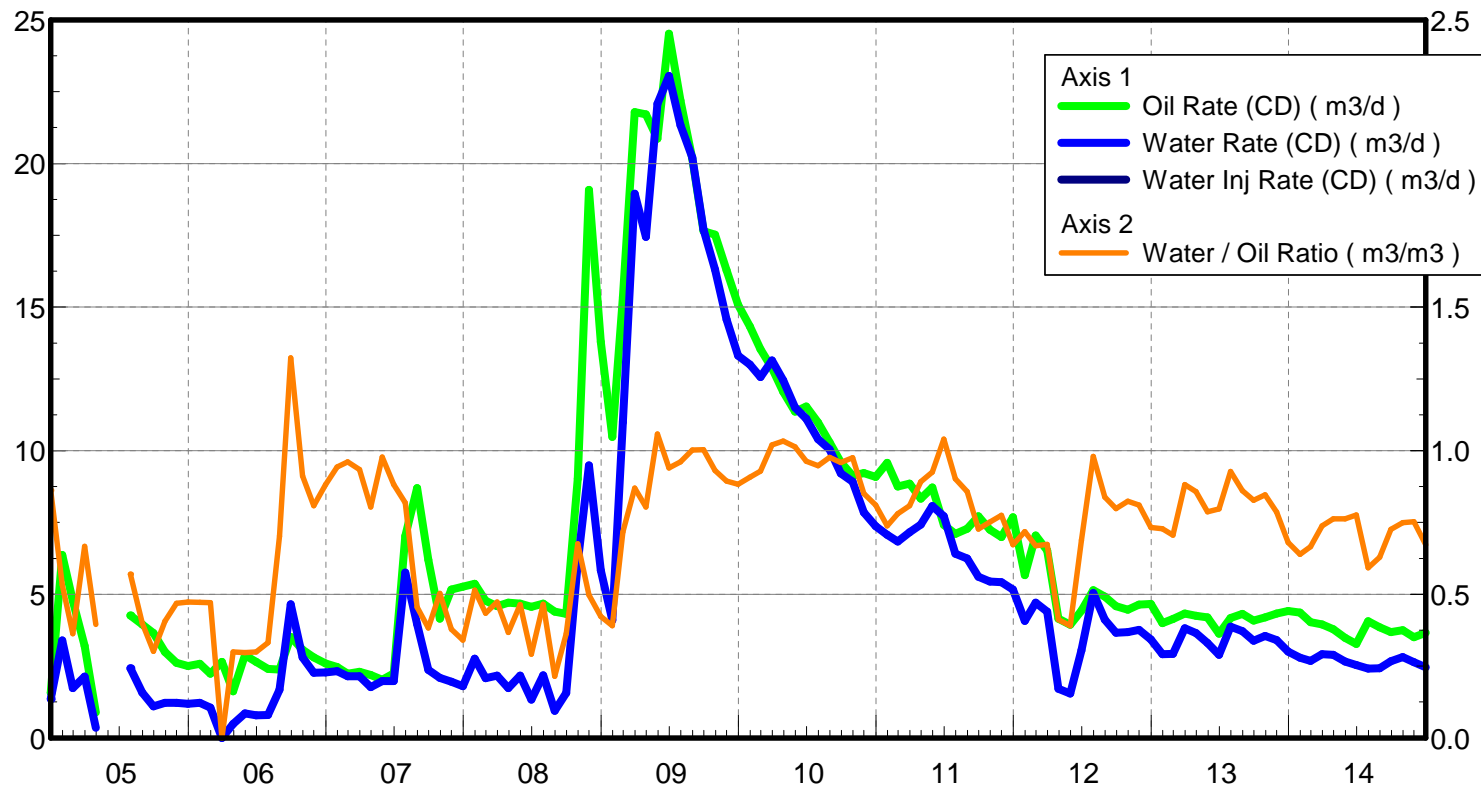


Date	Oil Rate (CD) m3/d	Water Rate (CD) m3/d	Water Oil Ratio m3/m3	Water Inj Rate (CD) m3/d	Cum Oil Prod Km3	Cum Water Prod Km3	Cum Water Inj Km3	Voidage Replacement Ratio	Cum Voidage Replacemt Ratio
8/31/2006	0.02	0.49	30.50		0.00	0.02	0.00	0.000	0.000
9/30/2006	2.29	2.25	0.98		0.07	0.08	0.00	0.000	0.000
10/31/2006	1.22	1.27	1.04		0.11	0.12	0.00	0.000	0.000
11/30/2006	0.93	1.07	1.14		0.14	0.15	0.00	0.000	0.000
12/31/2006	0.71	1.03	1.44		0.16	0.19	0.00	0.000	0.000
1/31/2007	0.67	0.97	1.44		0.18	0.22	0.00	0.000	0.000
2/28/2007	0.63	0.90	1.44		0.20	0.24	0.00	0.000	0.000
3/31/2007	0.57	0.83	1.46		0.21	0.27	0.00	0.000	0.000
4/30/2007	0.44	0.97	2.18		0.23	0.30	0.00	0.000	0.000
5/31/2007	0.44	0.81	1.86		0.24	0.32	0.00	0.000	0.000
6/30/2007	0.93	0.35	0.38		0.27	0.33	0.00	0.000	0.000
7/31/2007	0.54	0.63	1.15		0.28	0.35	0.00	0.000	0.000
8/31/2007	0.49	0.64	1.30		0.30	0.37	0.00	0.000	0.000
9/30/2007	4.98	4.28	0.86		0.45	0.50	0.00	0.000	0.000
10/31/2007	8.79	4.72	0.54		0.72	0.65	0.00	0.000	0.000
11/30/2007	10.76	5.03	0.47		1.04	0.80	0.00	0.000	0.000
12/31/2007	8.67	3.83	0.44		1.31	0.92	0.00	0.000	0.000
1/31/2008	7.22	3.21	0.44		1.54	1.01	0.00	0.000	0.000
2/29/2008	7.03	3.21	0.46		1.74	1.11	0.00	0.000	0.000
3/31/2008	6.50	2.99	0.46		1.94	1.20	0.00	0.000	0.000
4/30/2008	5.62	2.61	0.46		2.11	1.28	0.00	0.000	0.000
5/31/2008	5.30	2.55	0.48		2.27	1.36	0.00	0.000	0.000
6/30/2008	5.41	2.49	0.46		2.44	1.43	0.00	0.000	0.000
7/31/2008	5.13	2.13	0.41		2.60	1.50	0.00	0.000	0.000
8/31/2008	5.46	2.65	0.48		2.77	1.58	0.00	0.000	0.000
9/30/2008	5.29	2.25	0.42		2.92	1.65	0.00	0.000	0.000
10/31/2008	5.30	2.00	0.38		3.09	1.71	0.00	0.000	0.000
11/30/2008	5.50	2.69	0.49		3.25	1.79	0.00	0.000	0.000
12/31/2008	6.76	4.25	0.63		3.46	1.92	0.00	0.000	0.000
1/31/2009	4.06	2.73	0.67		3.59	2.01	0.00	0.000	0.000
2/28/2009	8.74	7.07	0.81		3.83	2.20	0.00	0.000	0.000
3/31/2009	17.55	11.96	0.68		4.38	2.58	0.00	0.000	0.000
4/30/2009	15.78	13.45	0.85		4.85	2.98	0.00	0.000	0.000
5/31/2009	11.93	15.66	1.31		5.22	3.46	0.00	0.000	0.000
6/30/2009	12.33	16.22	1.31		5.59	3.95	0.00	0.000	0.000
7/31/2009	13.05	16.39	1.26		5.99	4.46	0.00	0.000	0.000
8/31/2009	12.40	15.07	1.22		6.38	4.93	0.00	0.000	0.000
9/30/2009	10.00	11.17	1.12		6.68	5.26	0.00	0.000	0.000
10/31/2009	8.00	9.18	1.15		6.93	5.55	0.00	0.000	0.000
11/30/2009	8.47	10.49	1.24		7.18	5.86	0.00	0.000	0.000
12/31/2009	7.31	9.21	1.26		7.41	6.15	0.00	0.000	0.000
1/31/2010	7.01	9.25	1.32		7.62	6.43	0.00	0.000	0.000
2/28/2010	6.53	9.80	1.50		7.81	6.71	0.00	0.000	0.000
3/31/2010	5.91	8.61	1.46		7.99	6.97	0.00	0.000	0.000
4/30/2010	5.59	8.36	1.50		8.16	7.22	0.00	0.000	0.000
5/31/2010	5.44	7.95	1.46		8.33	7.47	0.00	0.000	0.000
6/30/2010	4.86	6.63	1.36		8.47	7.67	0.00	0.000	0.000
7/31/2010	5.06	6.32	1.25		8.63	7.87	0.00	0.000	0.000

Date	Oil Rate (CD) m3/d	Water Rate (CD) m3/d	Water Oil Ratio m3/m3	Water Inj Rate (CD) m3/d	Cum Oil Prod Km3	Cum Water Prod Km3	Cum Water Inj Km3	Voidage Replacement Ratio	Cum Voidage Replacemt Ratio
8/31/2010	4.96	6.98	1.41		8.78	8.08	0.00	0.000	0.000
9/30/2010	4.85	6.26	1.29		8.93	8.27	0.00	0.000	0.000
10/31/2010	4.50	5.92	1.31		9.07	8.45	0.00	0.000	0.000
11/30/2010	4.44	5.40	1.22		9.20	8.62	0.00	0.000	0.000
12/31/2010	3.63	4.89	1.35		9.31	8.77	0.00	0.000	0.000
1/31/2011	4.22	5.36	1.27		9.44	8.93	0.00	0.000	0.000
2/28/2011	4.06	5.30	1.31		9.56	9.08	0.00	0.000	0.000
3/31/2011	4.11	5.63	1.37		9.69	9.26	0.00	0.000	0.000
4/30/2011	3.35	5.13	1.53		9.79	9.41	0.00	0.000	0.000
5/31/2011	2.66	4.28	1.61		9.87	9.54	0.00	0.000	0.000
6/30/2011	1.11	1.24	1.12		9.90	9.58	0.00	0.000	0.000
7/31/2011	1.28	0.94	0.73		9.94	9.61	0.00	0.000	0.000
8/31/2011	1.36	1.02	0.75		9.98	9.64	0.00	0.000	0.000
9/30/2011	3.09	3.52	1.14		10.08	9.75	0.00	0.000	0.000
10/31/2011	4.21	5.47	1.30		10.21	9.92	0.00	0.000	0.000
11/30/2011	4.54	6.40	1.41		10.34	10.11	0.00	0.000	0.000
12/31/2011	4.27	5.05	1.18		10.48	10.26	0.00	0.000	0.000
1/31/2012	3.96	4.27	1.08		10.60	10.40	0.00	0.000	0.000
2/29/2012	4.39	3.66	0.83		10.73	10.50	0.00	0.000	0.000
3/31/2012	4.60	3.34	0.72		10.87	10.61	0.00	0.000	0.000
4/30/2012	4.42	2.98	0.67		11.00	10.70	0.00	0.000	0.000
5/31/2012	4.12	3.06	0.74		11.13	10.79	0.00	0.000	0.000
6/30/2012	3.83	3.31	0.86		11.24	10.89	0.00	0.000	0.000
7/31/2012	3.95	2.98	0.75		11.37	10.98	0.00	0.000	0.000
8/31/2012	4.27	2.49	0.58		11.50	11.06	0.00	0.000	0.000
9/30/2012	4.26	2.54	0.60		11.63	11.14	0.00	0.000	0.000
10/31/2012	3.91	2.51	0.64		11.75	11.21	0.00	0.000	0.000
11/30/2012	3.74	2.43	0.65		11.86	11.29	0.00	0.000	0.000
12/31/2012	3.76	2.69	0.71		11.98	11.37	0.00	0.000	0.000
1/31/2013	3.56	2.74	0.77		12.09	11.45	0.00	0.000	0.000
2/28/2013	3.42	3.01	0.88		12.18	11.54	0.00	0.000	0.000
3/31/2013	3.39	3.19	0.94		12.29	11.64	0.00	0.000	0.000
4/30/2013	3.25	3.43	1.06		12.39	11.74	0.00	0.000	0.000
5/31/2013	2.99	2.80	0.94		12.48	11.83	0.00	0.000	0.000
6/30/2013	1.15	0.58	0.51		12.51	11.84	0.00	0.000	0.000
7/31/2013	2.60	2.19	0.84		12.59	11.91	0.00	0.000	0.000
8/31/2013	4.00	3.04	0.76		12.72	12.01	0.00	0.000	0.000
9/30/2013	4.07	3.10	0.76		12.84	12.10	0.00	0.000	0.000
10/31/2013	3.90	3.40	0.87		12.96	12.21	0.00	0.000	0.000
11/30/2013	4.28	2.54	0.59		13.09	12.28	0.00	0.000	0.000
12/31/2013	3.99	2.29	0.57		13.21	12.35	0.00	0.000	0.000
1/31/2014	3.84	2.20	0.57		13.33	12.42	0.00	0.000	0.000
2/28/2014	3.64	2.03	0.56		13.43	12.48	0.00	0.000	0.000
3/31/2014	3.82	2.39	0.62		13.55	12.55	0.00	0.000	0.000
4/30/2014	3.36	2.23	0.66		13.65	12.62	0.00	0.000	0.000
5/31/2014	3.56	2.28	0.64		13.76	12.69	0.00	0.000	0.000
6/30/2014	3.45	2.01	0.58		13.87	12.75	0.00	0.000	0.000
7/31/2014	2.23	1.23	0.55		13.93	12.79	0.00	0.000	0.000

Date	Oil Rate (CD) m3/d	Water Rate (CD) m3/d	Water Oil Ratio m3/m3	Water Inj Rate (CD) m3/d	Cum Oil Prod Km3	Cum Water Prod Km3	Cum Water Inj Km3	Voidage Replacement Ratio	Cum Voidage Replacemt Ratio
8/31/2014	3.71	2.18	0.59		14.05	12.85	0.00	0.000	0.000
9/30/2014	3.34	2.12	0.63		14.15	12.92	0.00	0.000	0.000
10/31/2014	2.90	2.07	0.72		14.24	12.98	0.00	0.000	0.000
11/30/2014	2.89	1.90	0.66		14.33	13.04	0.00	0.000	0.000
12/31/2014	2.93	1.79	0.61		14.42	13.10	0.00	0.000	0.000

Oil Formation Vol Factor : 1.00150 m3/m3
Water Formation Vol Factor : 1.00150 m3/m3
Water / Oil Ratio : 0.67 m3/m3
Pattern: 00/09-20-007-28Inj Set: EwartUnit#8
May 25, 2015
Operator: Tundra_O&G_Prtshp
Oil Rate (CD) : 3.66 m3/d
Water Rate (CD) : 2.46 m3/d
Water Inj Rate (CD) : * m3/d



Date	Oil Rate (CD) m3/d	Water Rate (CD) m3/d	Water Oil Ratio m3/m3	Water Inj Rate (CD) m3/d	Cum Oil Prod Km3	Cum Water Prod Km3	Cum Water Inj Km3	Voidage Replacement Ratio	Cum Voidage Replacemt Ratio
12/31/2004	1.57	1.35	0.86		0.05	0.04	0.00	0.000	0.000
1/31/2005	6.37	3.40	0.53		0.25	0.15	0.00	0.000	0.000
2/28/2005	4.77	1.73	0.36		0.38	0.20	0.00	0.000	0.000
3/31/2005	3.20	2.14	0.67		0.48	0.26	0.00	0.000	0.000
4/30/2005	0.89	0.35	0.39		0.51	0.27	0.00	0.000	0.000
7/31/2005	4.26	2.43	0.57		0.64	0.35	0.00	0.000	0.000
8/31/2005	3.95	1.58	0.40		0.76	0.40	0.00	0.000	0.000
9/30/2005	3.65	1.10	0.30		0.87	0.43	0.00	0.000	0.000
10/31/2005	3.00	1.22	0.41		0.96	0.47	0.00	0.000	0.000
11/30/2005	2.61	1.22	0.47		1.04	0.50	0.00	0.000	0.000
12/31/2005	2.51	1.19	0.47		1.12	0.54	0.00	0.000	0.000
1/31/2006	2.58	1.22	0.47		1.20	0.58	0.00	0.000	0.000
2/28/2006	2.24	1.05	0.47		1.26	0.61	0.00	0.000	0.000
3/31/2006	2.64	0.00	0.00		1.34	0.61	0.00	0.000	0.000
4/30/2006	1.62	0.49	0.30		1.39	0.62	0.00	0.000	0.000
5/31/2006	2.88	0.86	0.30		1.48	0.65	0.00	0.000	0.000
6/30/2006	2.64	0.79	0.30		1.56	0.67	0.00	0.000	0.000
7/31/2006	2.40	0.80	0.33		1.64	0.70	0.00	0.000	0.000
8/31/2006	2.38	1.67	0.70		1.71	0.75	0.00	0.000	0.000
9/30/2006	3.52	4.65	1.32		1.81	0.89	0.00	0.000	0.000
10/31/2006	3.07	2.80	0.91		1.91	0.98	0.00	0.000	0.000
11/30/2006	2.80	2.26	0.81		1.99	1.04	0.00	0.000	0.000
12/31/2006	2.59	2.28	0.88		2.07	1.11	0.00	0.000	0.000
1/31/2007	2.47	2.33	0.94		2.15	1.19	0.00	0.000	0.000
2/28/2007	2.24	2.15	0.96		2.21	1.25	0.00	0.000	0.000
3/31/2007	2.30	2.15	0.93		2.28	1.31	0.00	0.000	0.000
4/30/2007	2.19	1.76	0.80		2.35	1.37	0.00	0.000	0.000
5/31/2007	2.02	1.97	0.98		2.41	1.43	0.00	0.000	0.000
6/30/2007	2.25	1.98	0.88		2.48	1.49	0.00	0.000	0.000
7/31/2007	7.03	5.75	0.82		2.70	1.67	0.00	0.000	0.000
8/31/2007	8.69	3.96	0.46		2.97	1.79	0.00	0.000	0.000
9/30/2007	6.20	2.37	0.38		3.15	1.86	0.00	0.000	0.000
10/31/2007	4.15	2.09	0.50		3.28	1.92	0.00	0.000	0.000
11/30/2007	5.16	1.95	0.38		3.44	1.98	0.00	0.000	0.000
12/31/2007	5.27	1.80	0.34		3.60	2.04	0.00	0.000	0.000
1/31/2008	5.37	2.76	0.51		3.77	2.12	0.00	0.000	0.000
2/29/2008	4.78	2.08	0.43		3.91	2.18	0.00	0.000	0.000
3/31/2008	4.59	2.17	0.47		4.05	2.25	0.00	0.000	0.000
4/30/2008	4.71	1.73	0.37		4.19	2.30	0.00	0.000	0.000
5/31/2008	4.67	2.17	0.46		4.33	2.37	0.00	0.000	0.000
6/30/2008	4.56	1.33	0.29		4.47	2.41	0.00	0.000	0.000
7/31/2008	4.67	2.17	0.47		4.62	2.48	0.00	0.000	0.000
8/31/2008	4.39	0.95	0.22		4.75	2.51	0.00	0.000	0.000
9/30/2008	4.32	1.57	0.36		4.88	2.55	0.00	0.000	0.000
10/31/2008	9.03	6.10	0.68		5.16	2.74	0.00	0.000	0.000
11/30/2008	19.08	9.49	0.50		5.73	3.03	0.00	0.000	0.000
12/31/2008	13.79	5.84	0.42		6.16	3.21	0.00	0.000	0.000
1/31/2009	10.48	4.10	0.39		6.49	3.34	0.00	0.000	0.000

Date	Oil Rate (CD) m3/d	Water Rate (CD) m3/d	Water Oil Ratio m3/m3	Water Inj Rate (CD) m3/d	Cum Oil Prod Km3	Cum Water Prod Km3	Cum Water Inj Km3	Voidage Replacement Ratio	Cum Voidage Replacemt Ratio
2/28/2009	15.34	11.00	0.72		6.92	3.64	0.00	0.000	0.000
3/31/2009	21.79	18.95	0.87		7.59	4.23	0.00	0.000	0.000
4/30/2009	21.71	17.45	0.80		8.24	4.76	0.00	0.000	0.000
5/31/2009	20.86	22.08	1.06		8.89	5.44	0.00	0.000	0.000
6/30/2009	24.52	23.05	0.94		9.63	6.13	0.00	0.000	0.000
7/31/2009	22.19	21.33	0.96		10.31	6.79	0.00	0.000	0.000
8/31/2009	20.16	20.20	1.00		10.94	7.42	0.00	0.000	0.000
9/30/2009	17.64	17.70	1.00		11.47	7.95	0.00	0.000	0.000
10/31/2009	17.53	16.31	0.93		12.01	8.46	0.00	0.000	0.000
11/30/2009	16.29	14.57	0.89		12.50	8.89	0.00	0.000	0.000
12/31/2009	15.08	13.32	0.88		12.97	9.31	0.00	0.000	0.000
1/31/2010	14.32	13.00	0.91		13.41	9.71	0.00	0.000	0.000
2/28/2010	13.53	12.56	0.93		13.79	10.06	0.00	0.000	0.000
3/31/2010	12.88	13.14	1.02		14.19	10.47	0.00	0.000	0.000
4/30/2010	12.05	12.45	1.03		14.55	10.84	0.00	0.000	0.000
5/31/2010	11.36	11.51	1.01		14.90	11.20	0.00	0.000	0.000
6/30/2010	11.54	11.11	0.96		15.25	11.53	0.00	0.000	0.000
7/31/2010	10.98	10.40	0.95		15.59	11.85	0.00	0.000	0.000
8/31/2010	10.29	10.05	0.98		15.91	12.17	0.00	0.000	0.000
9/30/2010	9.60	9.21	0.96		16.20	12.44	0.00	0.000	0.000
10/31/2010	9.14	8.92	0.98		16.48	12.72	0.00	0.000	0.000
11/30/2010	9.22	7.85	0.85		16.76	12.95	0.00	0.000	0.000
12/31/2010	9.09	7.37	0.81		17.04	13.18	0.00	0.000	0.000
1/31/2011	9.58	7.07	0.74		17.33	13.40	0.00	0.000	0.000
2/28/2011	8.75	6.83	0.78		17.58	13.59	0.00	0.000	0.000
3/31/2011	8.86	7.16	0.81		17.85	13.81	0.00	0.000	0.000
4/30/2011	8.33	7.42	0.89		18.10	14.04	0.00	0.000	0.000
5/31/2011	8.72	8.07	0.93		18.37	14.29	0.00	0.000	0.000
6/30/2011	7.42	7.71	1.04		18.60	14.52	0.00	0.000	0.000
7/31/2011	7.10	6.41	0.90		18.82	14.72	0.00	0.000	0.000
8/31/2011	7.28	6.24	0.86		19.04	14.91	0.00	0.000	0.000
9/30/2011	7.71	5.61	0.73		19.27	15.08	0.00	0.000	0.000
10/31/2011	7.25	5.45	0.75		19.50	15.25	0.00	0.000	0.000
11/30/2011	7.00	5.43	0.78		19.71	15.41	0.00	0.000	0.000
12/31/2011	7.68	5.16	0.67		19.95	15.57	0.00	0.000	0.000
1/31/2012	5.67	4.07	0.72		20.12	15.70	0.00	0.000	0.000
2/29/2012	7.05	4.71	0.67		20.33	15.83	0.00	0.000	0.000
3/31/2012	6.52	4.39	0.67		20.53	15.97	0.00	0.000	0.000
4/30/2012	4.16	1.71	0.41		20.65	16.02	0.00	0.000	0.000
5/31/2012	3.94	1.54	0.39		20.78	16.07	0.00	0.000	0.000
6/30/2012	4.43	3.05	0.69		20.91	16.16	0.00	0.000	0.000
7/31/2012	5.15	5.05	0.98		21.07	16.32	0.00	0.000	0.000
8/31/2012	4.92	4.12	0.84		21.22	16.44	0.00	0.000	0.000
9/30/2012	4.59	3.67	0.80		21.36	16.55	0.00	0.000	0.000
10/31/2012	4.47	3.68	0.82		21.50	16.67	0.00	0.000	0.000
11/30/2012	4.64	3.76	0.81		21.64	16.78	0.00	0.000	0.000
12/31/2012	4.67	3.42	0.73		21.78	16.89	0.00	0.000	0.000
1/31/2013	4.00	2.91	0.73		21.91	16.98	0.00	0.000	0.000

Date	Oil Rate (CD) m3/d	Water Rate (CD) m3/d	Water Oil Ratio m3/m3	Water Inj Rate (CD) m3/d	Cum Oil Prod Km3	Cum Water Prod Km3	Cum Water Inj Km3	Voidage Replacement Ratio	Cum Voidage Replacemt Ratio
2/28/2013	4.14	2.92	0.71		22.02	17.06	0.00	0.000	0.000
3/31/2013	4.33	3.82	0.88		22.16	17.18	0.00	0.000	0.000
4/30/2013	4.26	3.65	0.86		22.28	17.29	0.00	0.000	0.000
5/31/2013	4.20	3.31	0.79		22.41	17.39	0.00	0.000	0.000
6/30/2013	3.63	2.90	0.80		22.52	17.48	0.00	0.000	0.000
7/31/2013	4.18	3.88	0.93		22.65	17.60	0.00	0.000	0.000
8/31/2013	4.32	3.72	0.86		22.79	17.71	0.00	0.000	0.000
9/30/2013	4.09	3.38	0.83		22.91	17.81	0.00	0.000	0.000
10/31/2013	4.19	3.55	0.85		23.04	17.92	0.00	0.000	0.000
11/30/2013	4.33	3.40	0.79		23.17	18.03	0.00	0.000	0.000
12/31/2013	4.42	3.01	0.68		23.31	18.12	0.00	0.000	0.000
1/31/2014	4.37	2.79	0.64		23.44	18.21	0.00	0.000	0.000
2/28/2014	4.03	2.68	0.67		23.55	18.28	0.00	0.000	0.000
3/31/2014	3.95	2.91	0.74		23.68	18.37	0.00	0.000	0.000
4/30/2014	3.79	2.89	0.76		23.79	18.46	0.00	0.000	0.000
5/31/2014	3.49	2.66	0.76		23.90	18.54	0.00	0.000	0.000
6/30/2014	3.27	2.54	0.78		24.00	18.62	0.00	0.000	0.000
7/31/2014	4.07	2.41	0.59		24.12	18.69	0.00	0.000	0.000
8/31/2014	3.85	2.43	0.63		24.24	18.77	0.00	0.000	0.000
9/30/2014	3.68	2.67	0.73		24.35	18.85	0.00	0.000	0.000
10/31/2014	3.75	2.81	0.75		24.47	18.93	0.00	0.000	0.000
11/30/2014	3.50	2.63	0.75		24.57	19.01	0.00	0.000	0.000
12/31/2014	3.66	2.46	0.67		24.69	19.09	0.00	0.000	0.000

Oil Formation Vol Factor : 1.00150 m3/m3 Pattern: 02/04-20-007-28Inj Set: EwartUnit#8

Water Formation Vol Factor : 1.00150 m3/m3

May 25, 2015

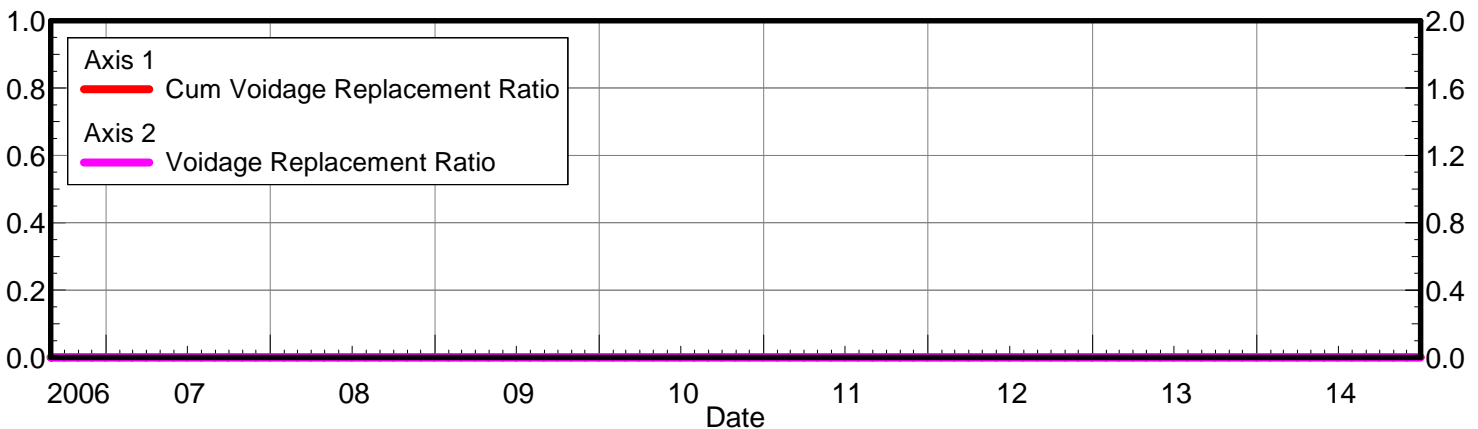
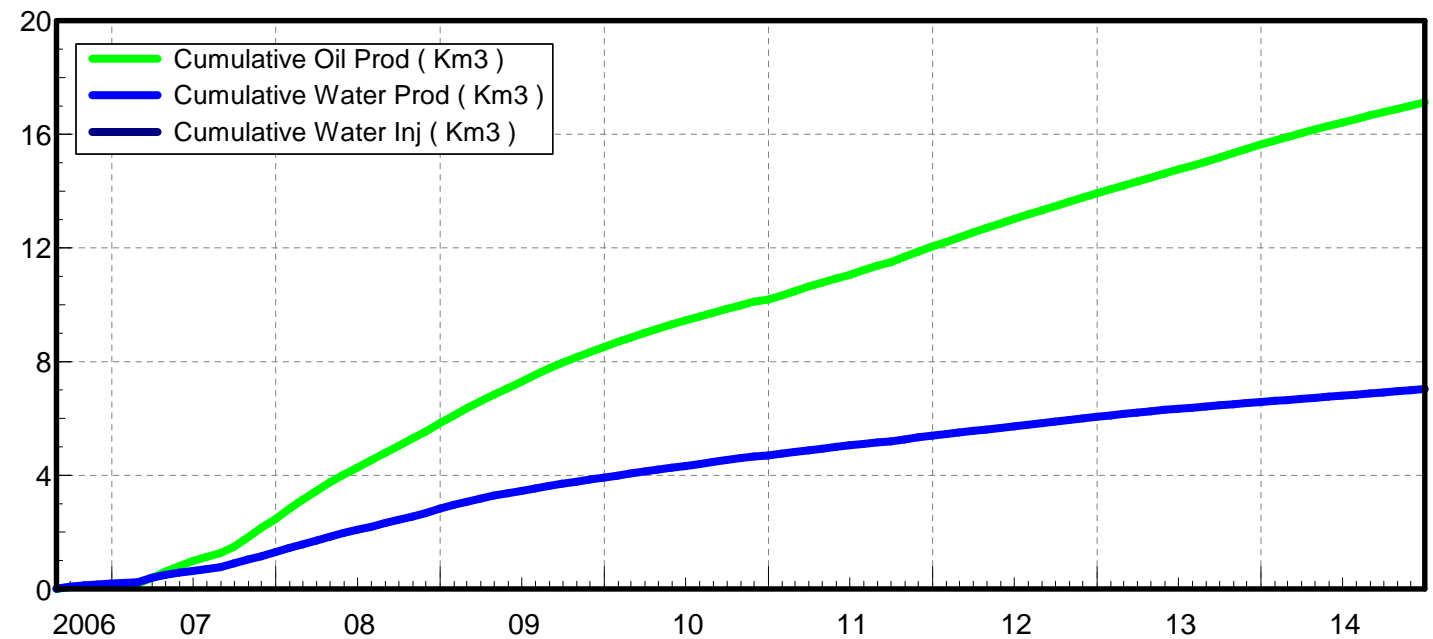
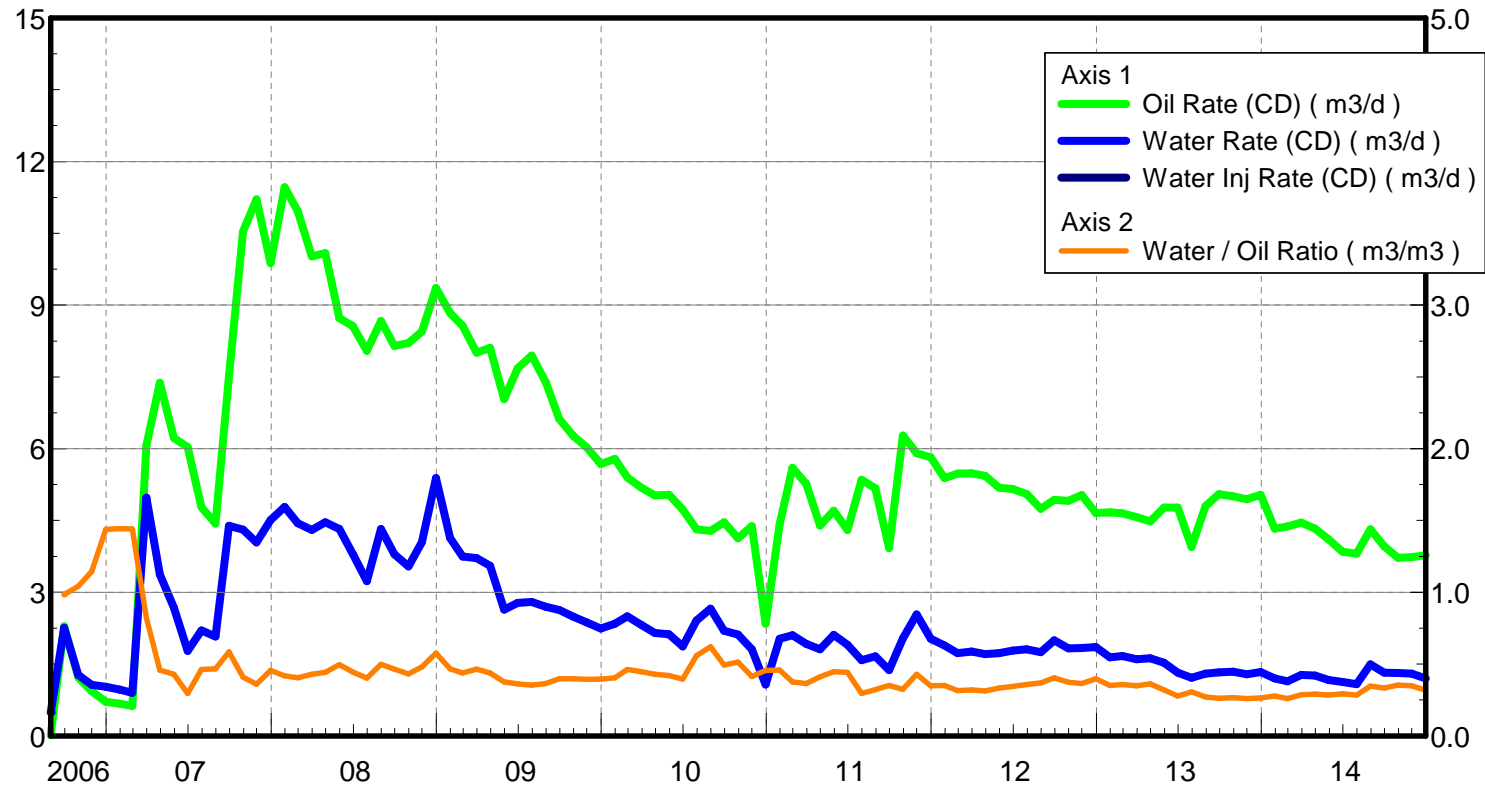
Water / Oil Ratio : 0.32 m3/m3

Operator: Tundra_O&G_Prtshp

Oil Rate (CD) : 3.78 m3/d

Water Rate (CD) : 1.20 m3/d

Water Inj Rate (CD) : * m3/d



Date	Oil Rate (CD) m3/d	Water Rate (CD) m3/d	Water Oil Ratio m3/m3	Water Inj Rate (CD) m3/d	Cum Oil Prod Km3	Cum Water Prod Km3	Cum Water Inj Km3	Voidage Replacement Ratio	Cum Voidage Replacemt Ratio
8/31/2006	0.02	0.49	30.50		0.00	0.02	0.00	0.000	0.000
9/30/2006	2.29	2.25	0.98		0.07	0.08	0.00	0.000	0.000
10/31/2006	1.22	1.27	1.04		0.11	0.12	0.00	0.000	0.000
11/30/2006	0.93	1.07	1.14		0.14	0.15	0.00	0.000	0.000
12/31/2006	0.71	1.03	1.44		0.16	0.19	0.00	0.000	0.000
1/31/2007	0.67	0.97	1.44		0.18	0.22	0.00	0.000	0.000
2/28/2007	0.63	0.90	1.44		0.20	0.24	0.00	0.000	0.000
3/31/2007	6.07	4.98	0.82		0.38	0.40	0.00	0.000	0.000
4/30/2007	7.38	3.38	0.46		0.61	0.50	0.00	0.000	0.000
5/31/2007	6.22	2.68	0.43		0.80	0.58	0.00	0.000	0.000
6/30/2007	6.03	1.78	0.29		0.98	0.63	0.00	0.000	0.000
7/31/2007	4.78	2.21	0.46		1.13	0.70	0.00	0.000	0.000
8/31/2007	4.44	2.08	0.47		1.26	0.77	0.00	0.000	0.000
9/30/2007	7.51	4.39	0.58		1.49	0.90	0.00	0.000	0.000
10/31/2007	10.54	4.31	0.41		1.82	1.03	0.00	0.000	0.000
11/30/2007	11.21	4.04	0.36		2.15	1.15	0.00	0.000	0.000
12/31/2007	9.88	4.51	0.46		2.46	1.29	0.00	0.000	0.000
1/31/2008	11.46	4.78	0.42		2.81	1.44	0.00	0.000	0.000
2/29/2008	10.96	4.44	0.41		3.13	1.57	0.00	0.000	0.000
3/31/2008	10.02	4.30	0.43		3.44	1.70	0.00	0.000	0.000
4/30/2008	10.09	4.46	0.44		3.75	1.84	0.00	0.000	0.000
5/31/2008	8.73	4.32	0.50		4.02	1.97	0.00	0.000	0.000
6/30/2008	8.56	3.80	0.44		4.27	2.08	0.00	0.000	0.000
7/31/2008	8.05	3.24	0.40		4.52	2.19	0.00	0.000	0.000
8/31/2008	8.67	4.33	0.50		4.79	2.32	0.00	0.000	0.000
9/30/2008	8.15	3.79	0.47		5.04	2.43	0.00	0.000	0.000
10/31/2008	8.21	3.54	0.43		5.29	2.54	0.00	0.000	0.000
11/30/2008	8.45	4.05	0.48		5.54	2.66	0.00	0.000	0.000
12/31/2008	9.36	5.38	0.58		5.83	2.83	0.00	0.000	0.000
1/31/2009	8.84	4.13	0.47		6.11	2.96	0.00	0.000	0.000
2/28/2009	8.57	3.74	0.44		6.35	3.06	0.00	0.000	0.000
3/31/2009	8.00	3.71	0.46		6.60	3.18	0.00	0.000	0.000
4/30/2009	8.11	3.55	0.44		6.84	3.29	0.00	0.000	0.000
5/31/2009	7.04	2.64	0.38		7.06	3.37	0.00	0.000	0.000
6/30/2009	7.68	2.78	0.36		7.29	3.45	0.00	0.000	0.000
7/31/2009	7.94	2.80	0.35		7.53	3.54	0.00	0.000	0.000
8/31/2009	7.39	2.70	0.36		7.76	3.62	0.00	0.000	0.000
9/30/2009	6.62	2.63	0.40		7.96	3.70	0.00	0.000	0.000
10/31/2009	6.27	2.49	0.40		8.16	3.78	0.00	0.000	0.000
11/30/2009	6.03	2.37	0.39		8.34	3.85	0.00	0.000	0.000
12/31/2009	5.68	2.24	0.39		8.51	3.92	0.00	0.000	0.000
1/31/2010	5.79	2.35	0.41		8.69	3.99	0.00	0.000	0.000
2/28/2010	5.40	2.50	0.46		8.84	4.06	0.00	0.000	0.000
3/31/2010	5.19	2.32	0.45		9.00	4.13	0.00	0.000	0.000
4/30/2010	5.02	2.15	0.43		9.15	4.20	0.00	0.000	0.000
5/31/2010	5.04	2.12	0.42		9.31	4.26	0.00	0.000	0.000
6/30/2010	4.73	1.87	0.39		9.45	4.32	0.00	0.000	0.000
7/31/2010	4.31	2.41	0.56		9.59	4.39	0.00	0.000	0.000

Date	Oil Rate (CD) m3/d	Water Rate (CD) m3/d	Water Oil Ratio m3/m3	Water Inj Rate (CD) m3/d	Cum Oil Prod Km3	Cum Water Prod Km3	Cum Water Inj Km3	Voidage Replacement Ratio	Cum Voidage Replacemt Ratio
8/31/2010	4.28	2.66	0.62		9.72	4.48	0.00	0.000	0.000
9/30/2010	4.46	2.20	0.49		9.85	4.54	0.00	0.000	0.000
10/31/2010	4.13	2.12	0.51		9.98	4.61	0.00	0.000	0.000
11/30/2010	4.38	1.81	0.41		10.11	4.66	0.00	0.000	0.000
12/31/2010	2.34	1.07	0.46		10.19	4.70	0.00	0.000	0.000
1/31/2011	4.43	2.03	0.46		10.32	4.76	0.00	0.000	0.000
2/28/2011	5.60	2.10	0.38		10.48	4.82	0.00	0.000	0.000
3/31/2011	5.26	1.92	0.37		10.64	4.88	0.00	0.000	0.000
4/30/2011	4.40	1.81	0.41		10.77	4.93	0.00	0.000	0.000
5/31/2011	4.71	2.11	0.45		10.92	5.00	0.00	0.000	0.000
6/30/2011	4.30	1.90	0.44		11.05	5.05	0.00	0.000	0.000
7/31/2011	5.35	1.58	0.30		11.22	5.10	0.00	0.000	0.000
8/31/2011	5.17	1.66	0.32		11.38	5.15	0.00	0.000	0.000
9/30/2011	3.92	1.38	0.35		11.49	5.20	0.00	0.000	0.000
10/31/2011	6.27	2.04	0.32		11.69	5.26	0.00	0.000	0.000
11/30/2011	5.91	2.54	0.43		11.86	5.33	0.00	0.000	0.000
12/31/2011	5.82	2.03	0.35		12.05	5.40	0.00	0.000	0.000
1/31/2012	5.39	1.89	0.35		12.21	5.46	0.00	0.000	0.000
2/29/2012	5.48	1.73	0.32		12.37	5.51	0.00	0.000	0.000
3/31/2012	5.49	1.76	0.32		12.54	5.56	0.00	0.000	0.000
4/30/2012	5.43	1.71	0.31		12.70	5.61	0.00	0.000	0.000
5/31/2012	5.18	1.73	0.33		12.87	5.67	0.00	0.000	0.000
6/30/2012	5.16	1.78	0.35		13.02	5.72	0.00	0.000	0.000
7/31/2012	5.05	1.81	0.36		13.18	5.78	0.00	0.000	0.000
8/31/2012	4.75	1.75	0.37		13.32	5.83	0.00	0.000	0.000
9/30/2012	4.93	2.00	0.40		13.47	5.89	0.00	0.000	0.000
10/31/2012	4.91	1.83	0.37		13.62	5.95	0.00	0.000	0.000
11/30/2012	5.03	1.83	0.36		13.77	6.00	0.00	0.000	0.000
12/31/2012	4.65	1.85	0.40		13.92	6.06	0.00	0.000	0.000
1/31/2013	4.67	1.64	0.35		14.06	6.11	0.00	0.000	0.000
2/28/2013	4.65	1.67	0.36		14.19	6.16	0.00	0.000	0.000
3/31/2013	4.57	1.60	0.35		14.34	6.21	0.00	0.000	0.000
4/30/2013	4.49	1.63	0.36		14.47	6.25	0.00	0.000	0.000
5/31/2013	4.77	1.53	0.32		14.62	6.30	0.00	0.000	0.000
6/30/2013	4.77	1.32	0.28		14.76	6.34	0.00	0.000	0.000
7/31/2013	3.95	1.21	0.31		14.88	6.38	0.00	0.000	0.000
8/31/2013	4.80	1.30	0.27		15.03	6.42	0.00	0.000	0.000
9/30/2013	5.05	1.33	0.26		15.18	6.46	0.00	0.000	0.000
10/31/2013	5.00	1.34	0.27		15.34	6.50	0.00	0.000	0.000
11/30/2013	4.94	1.28	0.26		15.49	6.54	0.00	0.000	0.000
12/31/2013	5.04	1.33	0.26		15.64	6.58	0.00	0.000	0.000
1/31/2014	4.33	1.20	0.28		15.78	6.62	0.00	0.000	0.000
2/28/2014	4.38	1.14	0.26		15.90	6.65	0.00	0.000	0.000
3/31/2014	4.46	1.28	0.29		16.04	6.69	0.00	0.000	0.000
4/30/2014	4.33	1.26	0.29		16.17	6.73	0.00	0.000	0.000
5/31/2014	4.10	1.17	0.28		16.30	6.76	0.00	0.000	0.000
6/30/2014	3.85	1.13	0.29		16.41	6.80	0.00	0.000	0.000
7/31/2014	3.81	1.08	0.28		16.53	6.83	0.00	0.000	0.000

Date	Oil Rate (CD) m3/d	Water Rate (CD) m3/d	Water Oil Ratio m3/m3	Water Inj Rate (CD) m3/d	Cum Oil Prod Km3	Cum Water Prod Km3	Cum Water Inj Km3	Voidage Replacement Ratio	Cum Voidage Replacemt Ratio
8/31/2014	4.32	1.49	0.35		16.66	6.88	0.00	0.000	0.000
9/30/2014	3.96	1.32	0.33		16.78	6.92	0.00	0.000	0.000
10/31/2014	3.72	1.31	0.35		16.90	6.96	0.00	0.000	0.000
11/30/2014	3.74	1.30	0.35		17.01	7.00	0.00	0.000	0.000
12/31/2014	3.78	1.20	0.32		17.13	7.03	0.00	0.000	0.000



TUNDRA OIL & GAS PARTNERSHIP

EWART UNIT 8 HZNTL (1A-20) 4B-20-7-28

102/04-20-007-28W1/00

LICENSE #: 10241

BAKKEN FORMATION

RESERVOIR PRESSURE SURVEY TEST

DECEMBER 15th, 2014 – JANUARY 21st, 2015

Prepared by: **DOLLCO Well Data Services**
e-mail: dollco@shaw.ca

PO Box 326
417A Mississippian Drive
Esteran, SK
S4A 2A4

Cell: (306) 421 - 7330
Fax: (306) 634 - 7976
Res: (306) 634 - 8761

E-mail: qualityw@sasktel.net

Pressure Survey Report

Company Information

Company Name	TUNDRA OIL & GAS PARTNERSHIP
Contact	CRAIG LANE
e-mail	craig.lane@tundraoilandgas.com
Phone	(204) 748-4409
Site Contact	BRUCE DUNNING
Site Phone	(204) 851-5822

Well Information

Well Name	EWART UNIT 8 HZNTL (1A-20) 4B-20-7-28
Unique Well ID	102/04-20-007-28W1/00
Surface Location	1A-20 / 4B-20-7-28W1
Well License Number	10214
Well Type	Horizontal
Well Fluid Type	01 Oil
Field	SINCLAIR

KB Elevation (SL)	498.28 m
CF Elevation (SL)	494.18 m
GL Elevation (SL)	494.18 m
Distance from KB to CF (Log)	4.10 m
KB-GL Offset	4.10 m

Tubing ID	mm
Tubing OD	mm
Tubing Depth(Log KB)	m
Tubing Depth(TVD KB)	m
Casing ID	mm
Casing OD	177.8 mm
Casing Depth(Log KB)	1058.00000 m
Casing Depth(TVD KB)	948.91000 m
PBTD(Log KB)	m
PBTD(TVD KB)	m

Pressure Survey Report

Test Information

Well Name EWART UNIT 8 HZNTL (1A-20) 4B-20-7-28
Unique Well ID 102/04-20-007-28W1/00
Surface Location 1A-20 / 4B-20-7-28W1
Well License Number 10214

Well Fluid Type 01 Oil
Test Purpose Initial Test
Test Type RESERVOIR PRESSURE SURVEY
Formation BAKKEN
Well Type Indicator Horizontal

Test/Prod. Interval Top KB (Log) 1058.00 m
Test/Prod. Interval Base KB (Log) 2324.00 m
MPP(Log KB) 1691.00 m
Test/Prod Interval Top KB (TVD) 948.91 m
Test/Prod. Interval Base m KB (TVD) 955.92 m
MPP(TVD KB) 952.42 m

Tubing Pressure Initial kPa(a)
Casing Pressure Initial kPa(a)
Tubing Pressure: Final kPa(a)
Casing Pressure: Final kPa(a)

Time/Date Well Shut-In 2014/12/15 20:00:00
Final Test Date/Time 2015/01/21 13:00:30

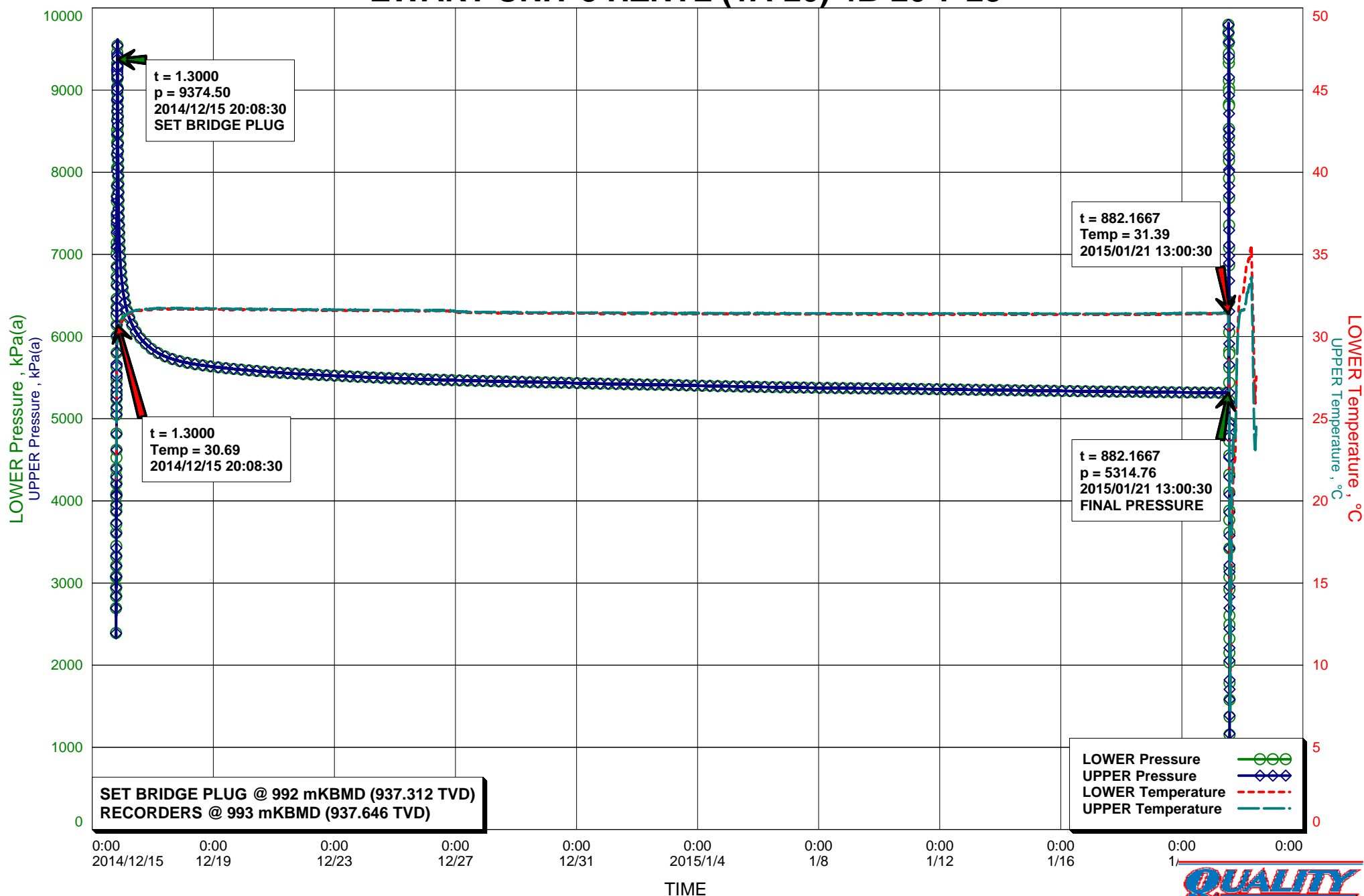
Gauge Serial Number Used in Summary V74
Last Measured Pressure at Run Depth 5314.76 kPa(a)
Reservoir Temperature 31.39 °C

Service Company Quality Wireline Services Ltd.
Representative IVORY HERMAN
Prepared By DOLLCO Well Data Services
Qualified By RICK DOLL
Report Date 2015/01/11

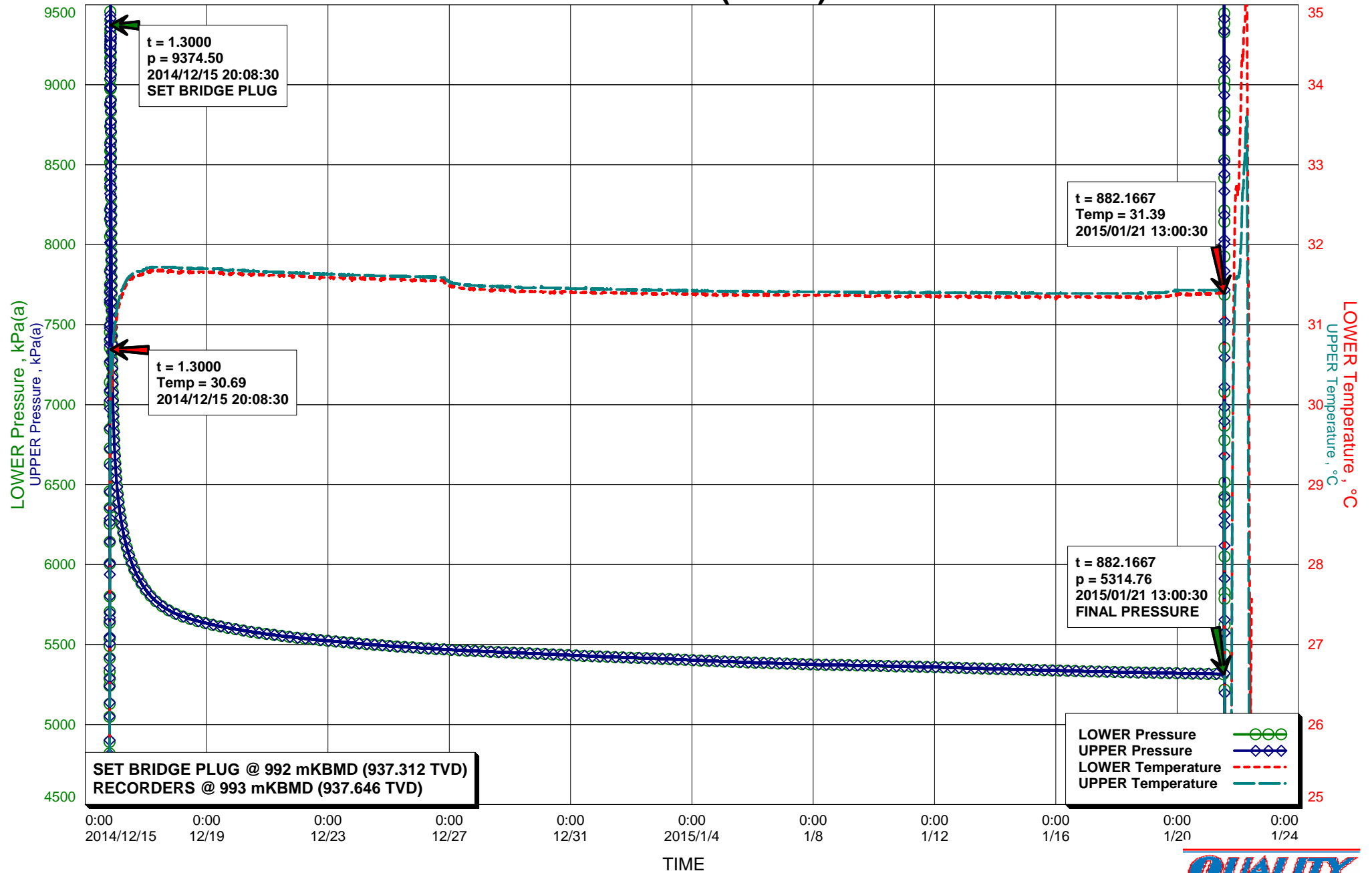
RECORDERS SET @ 993 mKBMD (937.646 TVD) BELOW BRIDGE PLUG
OPEN HOLE: 1058 - 2324 mKBMD (948.91 - 955.92 TVD)



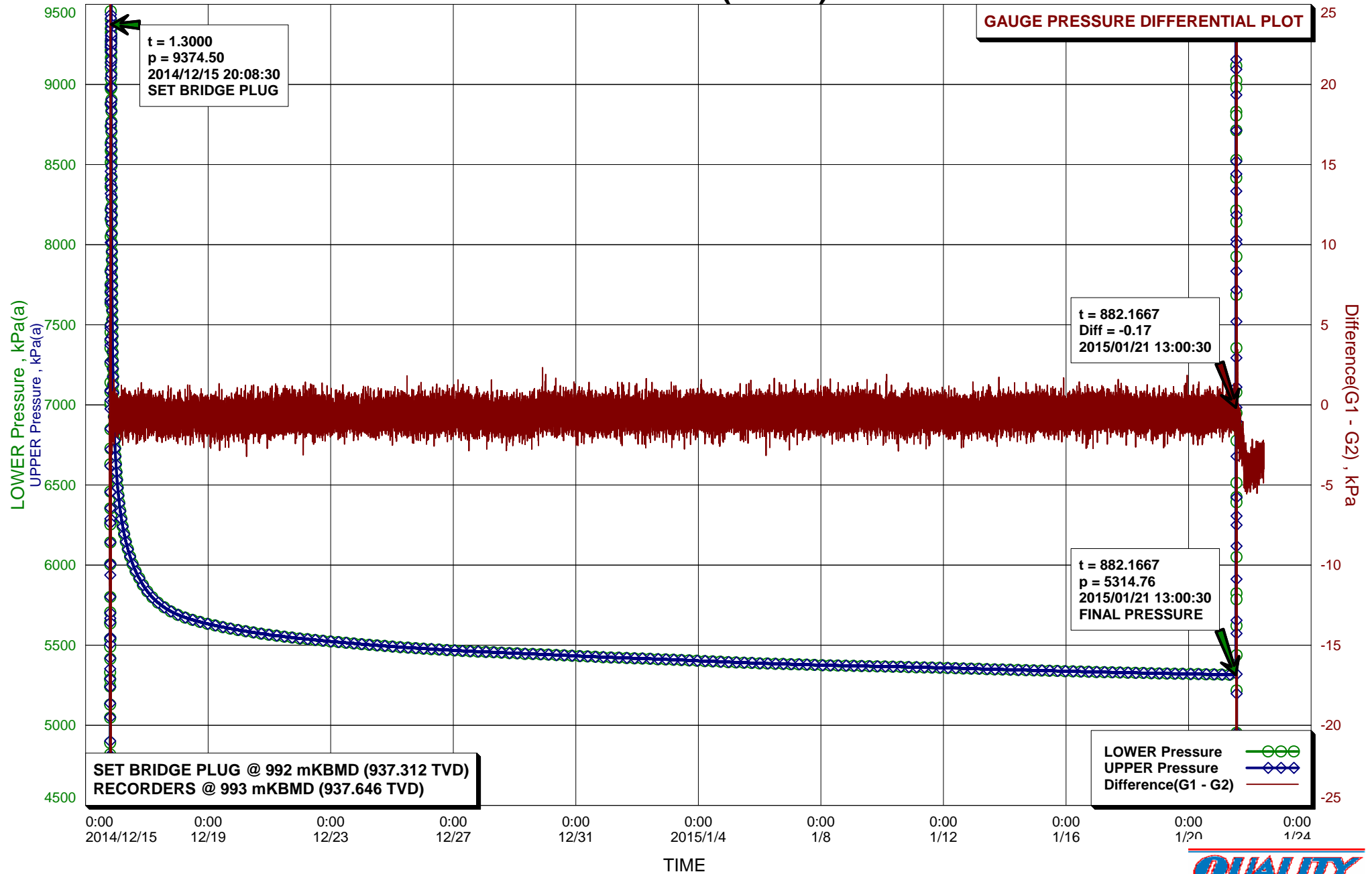
EWART UNIT 8 HZNTL (1A-20) 4B-20-7-28



EWART UNIT 8 HZNTL (1A-20) 4B-20-7-28



EWART UNIT 8 HZNTL (1A-20) 4B-20-7-28



Recorder Information

Company Name	TUNDRA OIL & GAS PARTNERSHIP
Unique Well ID	102/04-20-007-28W1/00
Well Name	EWART UNIT 8 HZNTL (1A-20) 4B-20-7-28
Formation	BAKKEN
Start Test Date	2014/12/15
Final Test Date	2015/01/21

Gauge 1

Gauge Name	LOWER	Gauge Type	ELECTRONIC
Gauge Serial Number	V74	Gauge Manufacturer	REAL TIME MEASUREMENTS
Run Depth (Log KB)	993.00 m	Gauge Model	KC3 STRAIN
Date of Last Calibration	2014/07/18	Maximum Recorder Range	20680.00 kPa
Gauge Start Date	2014/12/15	Gauge Start Time	18:50:30
Gauge Stop Date	2015/01/22	Gauge Stop Time	11:00:00
Date Gauge On Bottom	2014/12/15	Time Gauge On Bottom	19:55:00
Date Gauge Off Bottom	2015/01/21	Time Gauge Off Bottom	13:00:30

Gauge 2

Gauge Name	UPPER	Gauge Type	ELECTRONIC
Gauge Serial Number	V7E	Gauge Manufacturer	REAL TIME MEASUREMENTS
Run Depth (Log KB)	993.00 m	Gauge Model	KC3 STRAIN
Date of Last Calibration	2014/07/18	Maximum Recorder Range	20680.00 kPa
Gauge Start Date	2014/12/15	Gauge Start Time	18:50:30
Gauge Stop Date	2015/01/22	Gauge Stop Time	11:00:00
Date Gauge On Bottom	2014/12/15	Time Gauge On Bottom	19:55:00
Date Gauge Off Bottom	2015/01/21	Time Gauge Off Bottom	13:00:30

TUNDRA OIL & GAS PARTNERSHIP
102/04-20-007-28W1/00
Start Test Date: 2014/12/15
Final Test Date: 2015/01/21

EWART UNIT 8 HZNTL (1A-20) 4B-20-7-28
Formation: BAKKEN
RESERVOIR PRESSURE SURVEY
RECORDERS @ 993 mKBMD (937.646 TVD)

	LOWER Date yyyy/mm/dd	LOWER Clk Time hh:mm:ss	LOWER Time hr	LOWER Pres. kPa(a)	LOWER Temp. °C	UPPER Time hr	UPPER Pres. kPa(a)	UPPER Temp. °C	Diff. G1 - G2 kPa
1	2014/12/15	18:50:30	0.0000	2391.58	21.32	0.0000	2386.16	21.42	5.42
2	2014/12/15	18:50:30	0.0000	RIH, ACTIVATE RECORDERS S/N: V74(L) & V7E(U)					
3	2014/12/15	18:51:00	0.0083	2344.23	21.35	0.0083	2349.33	21.46	-5.10
4	2014/12/15	19:55:00	1.0750	9262.21	30.62	1.0750	9269.48	30.71	-7.27
5	2014/12/15	19:55:00	1.0750	RECORDERS ON BOTTOM @ 993 mKBMD (937.646 TVD)					
6	2014/12/15	19:55:30	1.0833	9269.06	30.63	1.0833	9270.18	30.70	-1.12
7	2014/12/15	20:08:30	1.3000	9374.50	30.69	1.3000	9376.94	30.74	-2.44
8	2014/12/15	20:08:30	1.3000	BRIDGE PLUG SET @ 992 mKBMD (937.312 TVD)					
9	2014/12/15	20:09:00	1.3083	9312.23	30.68	1.3083	9313.30	30.74	-1.07
10	2014/12/15	22:50:30	4.0000	6772.32	30.80	4.0000	6771.79	30.92	0.53
11	2014/12/16	02:50:30	8.0000	6357.19	31.24	8.0000	6357.73	31.32	-0.54
12	2014/12/16	06:50:30	12.0000	6170.51	31.44	12.0000	6171.13	31.50	-0.62
13	2014/12/16	10:50:30	16.0000	6053.06	31.55	16.0000	6053.53	31.60	-0.47
14	2014/12/16	14:50:30	20.0000	5967.82	31.60	20.0000	5969.27	31.64	-1.45
15	2014/12/16	18:50:30	24.0000	5906.23	31.62	24.0000	5906.91	31.67	-0.68
16	2014/12/16	22:50:30	28.0000	5852.31	31.64	28.0000	5853.05	31.69	-0.74
17	2014/12/17	02:50:30	32.0000	5812.29	31.66	32.0000	5813.55	31.71	-1.26
18	2014/12/17	06:50:30	36.0000	5778.51	31.67	36.0000	5779.17	31.72	-0.66
19	2014/12/17	10:50:30	40.0000	5751.55	31.68	40.0000	5752.54	31.72	-0.99
20	2014/12/17	14:50:30	44.0000	5729.26	31.67	44.0000	5730.02	31.72	-0.76
21	2014/12/17	18:50:30	48.0000	5710.68	31.67	48.0000	5711.69	31.72	-1.01
22	2014/12/17	22:50:30	52.0000	5695.09	31.66	52.0000	5695.80	31.71	-0.71
23	2014/12/18	02:50:30	56.0000	5681.82	31.65	56.0000	5682.50	31.71	-0.68
24	2014/12/18	06:50:30	60.0000	5669.59	31.66	60.0000	5671.19	31.71	-1.60
25	2014/12/18	10:50:30	64.0000	5659.70	31.65	64.0000	5660.88	31.71	-1.18
26	2014/12/18	14:50:30	68.0000	5651.15	31.66	68.0000	5651.80	31.70	-0.65
27	2014/12/18	18:50:30	72.0000	5642.44	31.66	72.0000	5643.36	31.70	-0.92
28	2014/12/18	22:50:30	76.0000	5634.62	31.66	76.0000	5635.42	31.70	-0.80
29	2014/12/19	02:50:30	80.0000	5627.25	31.66	80.0000	5627.93	31.70	-0.68
30	2014/12/19	06:50:30	84.0000	5620.38	31.65	84.0000	5621.02	31.70	-0.64
31	2014/12/19	10:50:30	88.0000	5613.65	31.65	88.0000	5614.49	31.70	-0.84
32	2014/12/19	14:50:30	92.0000	5607.38	31.62	92.0000	5608.22	31.68	-0.84
33	2014/12/19	18:50:30	96.0000	5601.83	31.64	96.0000	5602.39	31.69	-0.56
34	2014/12/19	22:50:30	100.0000	5595.74	31.65	100.0000	5596.48	31.69	-0.74
35	2014/12/20	02:50:30	104.0000	5590.28	31.64	104.0000	5591.07	31.68	-0.79
36	2014/12/20	06:50:30	108.0000	5585.03	31.62	108.0000	5585.82	31.67	-0.79
37	2014/12/20	10:50:30	112.0000	5580.08	31.63	112.0000	5580.73	31.67	-0.65
38	2014/12/20	14:50:30	116.0000	5575.05	31.63	116.0000	5576.01	31.67	-0.96
39	2014/12/20	18:50:30	120.0000	5570.82	31.63	120.0000	5569.98	31.66	0.84
40	2014/12/20	22:50:30	124.0000	5565.78	31.62	124.0000	5566.42	31.66	-0.64

LOWER Serial Number: V74 Start Date: 2014/12/15 18:50:30 Run Depth: 993.00
UPPER Serial Number: V7E Start Date: 2014/12/15 18:50:30 Run Depth: 993.00
Print Filter: Print every 4 hour

TUNDRA OIL & GAS PARTNERSHIP
102/04-20-007-28W1/00
Start Test Date: 2014/12/15
Final Test Date: 2015/01/21

RESERVOIR PRESSURE SURVEY
RECORDERS @ 993 mKBMD (937.646 TVD)

EWART UNIT 8 HZNTL (1A-20) 4B-20-7-28
Formation: BAKKEN

	LOWER Date yyyy/mm/dd	LOWER Clk Time hh:mm:ss	LOWER Time hr	LOWER Pres. kPa(a)	LOWER Temp. °C	UPPER Time hr	UPPER Pres. kPa(a)	UPPER Temp. °C	Diff. G1 - G2 kPa
41	2014/12/21	02:50:30	128.0000	5561.78	31.62	128.0000	5562.29	31.66	-0.51
42	2014/12/21	06:50:30	132.0000	5557.74	31.62	132.0000	5558.38	31.66	-0.64
43	2014/12/21	10:50:30	136.0000	5554.08	31.62	136.0000	5554.45	31.66	-0.37
44	2014/12/21	14:50:30	140.0000	5550.11	31.62	140.0000	5550.71	31.65	-0.60
45	2014/12/21	18:50:30	144.0000	5546.38	31.61	144.0000	5547.10	31.65	-0.72
46	2014/12/21	22:50:30	148.0000	5541.99	31.61	148.0000	5543.31	31.65	-1.32
47	2014/12/22	02:50:30	152.0000	5539.26	31.60	152.0000	5539.99	31.64	-0.73
48	2014/12/22	06:50:30	156.0000	5535.64	31.60	156.0000	5536.70	31.64	-1.06
49	2014/12/22	10:50:30	160.0000	5532.83	31.60	160.0000	5533.63	31.64	-0.80
50	2014/12/22	14:50:30	164.0000	5529.77	31.60	164.0000	5530.39	31.63	-0.62
51	2014/12/22	18:50:30	168.0000	5526.76	31.59	168.0000	5528.39	31.63	-1.63
52	2014/12/22	22:50:30	172.0000	5523.80	31.59	172.0000	5524.69	31.63	-0.89
53	2014/12/23	02:50:30	176.0000	5520.83	31.59	176.0000	5521.57	31.63	-0.74
54	2014/12/23	06:50:30	180.0000	5518.52	31.59	180.0000	5518.90	31.63	-0.38
55	2014/12/23	10:50:30	184.0000	5515.43	31.59	184.0000	5516.27	31.63	-0.84
56	2014/12/23	14:50:30	188.0000	5512.13	31.58	188.0000	5513.30	31.62	-1.17
57	2014/12/23	18:50:30	192.0000	5510.04	31.58	192.0000	5510.70	31.62	-0.66
58	2014/12/23	22:50:30	196.0000	5507.03	31.57	196.0000	5507.87	31.62	-0.84
59	2014/12/24	02:50:30	200.0000	5504.60	31.58	200.0000	5504.27	31.62	0.33
60	2014/12/24	06:50:30	204.0000	5501.91	31.58	204.0000	5501.22	31.62	0.69
61	2014/12/24	10:50:30	208.0000	5499.30	31.58	208.0000	5500.14	31.61	-0.84
62	2014/12/24	14:50:30	212.0000	5495.98	31.56	212.0000	5497.41	31.61	-1.43
63	2014/12/24	18:50:30	216.0000	5494.58	31.56	216.0000	5494.23	31.61	0.35
64	2014/12/24	22:50:30	220.0000	5491.91	31.57	220.0000	5492.00	31.61	-0.09
65	2014/12/25	02:50:30	224.0000	5489.93	31.57	224.0000	5489.61	31.61	0.32
66	2014/12/25	06:50:30	228.0000	5487.76	31.56	228.0000	5488.19	31.61	-0.43
67	2014/12/25	10:50:30	232.0000	5485.79	31.57	232.0000	5486.36	31.60	-0.57
68	2014/12/25	14:50:30	236.0000	5484.10	31.56	236.0000	5483.61	31.60	0.49
69	2014/12/25	18:50:30	240.0000	5481.52	31.56	240.0000	5482.11	31.60	-0.59
70	2014/12/25	22:50:30	244.0000	5479.56	31.56	244.0000	5479.86	31.60	-0.30
71	2014/12/26	02:50:30	248.0000	5477.10	31.55	248.0000	5477.93	31.60	-0.83
72	2014/12/26	06:50:30	252.0000	5475.51	31.55	252.0000	5476.18	31.60	-0.67
73	2014/12/26	10:50:30	256.0000	5473.67	31.55	256.0000	5473.78	31.59	-0.11
74	2014/12/26	14:50:30	260.0000	5471.76	31.55	260.0000	5472.45	31.59	-0.69
75	2014/12/26	18:50:30	264.0000	5469.77	31.55	264.0000	5470.55	31.59	-0.78
76	2014/12/26	22:50:30	268.0000	5468.13	31.49	268.0000	5468.80	31.55	-0.67
77	2014/12/27	02:50:30	272.0000	5466.26	31.48	272.0000	5466.83	31.52	-0.57
78	2014/12/27	06:50:30	276.0000	5465.09	31.46	276.0000	5465.22	31.51	-0.13
79	2014/12/27	10:50:30	280.0000	5463.89	31.45	280.0000	5462.96	31.50	0.93
80	2014/12/27	14:50:30	284.0000	5461.24	31.45	284.0000	5463.16	31.49	-1.92

LOWER Serial Number: V74 Start Date: 2014/12/15 18:50:30 Run Depth: 993.00
UPPER Serial Number: V7E Start Date: 2014/12/15 18:50:30 Run Depth: 993.00
Print Filter: Print every 4 hour

TUNDRA OIL & GAS PARTNERSHIP
102/04-20-007-28W1/00
Start Test Date: 2014/12/15
Final Test Date: 2015/01/21

RESERVOIR PRESSURE SURVEY
RECORDERS @ 993 mKBMD (937.646 TVD)

EWART UNIT 8 HZNTL (1A-20) 4B-20-7-28
Formation: BAKKEN

	LOWER Date yyyy/mm/dd	LOWER Clk Time hh:mm:ss	LOWER Time hr	LOWER Pres. kPa(a)	LOWER Temp. °C	UPPER Time hr	UPPER Pres. kPa(a)	UPPER Temp. °C	Diff. G1 - G2 kPa
81	2014/12/27	18:50:30	288.0000	5460.00	31.44	288.0000	5460.79	31.49	-0.79
82	2014/12/27	22:50:30	292.0000	5458.62	31.44	292.0000	5459.12	31.49	-0.50
83	2014/12/28	02:50:30	296.0000	5457.63	31.44	296.0000	5457.52	31.48	0.11
84	2014/12/28	06:50:30	300.0000	5455.49	31.43	300.0000	5456.09	31.48	-0.60
85	2014/12/28	10:50:30	304.0000	5454.01	31.43	304.0000	5454.96	31.48	-0.95
86	2014/12/28	14:50:30	308.0000	5453.72	31.44	308.0000	5453.26	31.47	0.46
87	2014/12/28	18:50:30	312.0000	5451.21	31.43	312.0000	5451.82	31.47	-0.61
88	2014/12/28	22:50:30	316.0000	5449.71	31.43	316.0000	5450.60	31.47	-0.89
89	2014/12/29	02:50:30	320.0000	5448.56	31.42	320.0000	5449.06	31.47	-0.50
90	2014/12/29	06:50:30	324.0000	5446.93	31.41	324.0000	5447.35	31.47	-0.42
91	2014/12/29	10:50:30	328.0000	5445.26	31.42	328.0000	5446.59	31.46	-1.33
92	2014/12/29	14:50:30	332.0000	5443.88	31.41	332.0000	5445.38	31.46	-1.50
93	2014/12/29	18:50:30	336.0000	5442.84	31.41	336.0000	5443.83	31.46	-0.99
94	2014/12/29	22:50:30	340.0000	5441.99	31.42	340.0000	5442.52	31.46	-0.53
95	2014/12/30	02:50:30	344.0000	5440.73	31.41	344.0000	5441.34	31.46	-0.61
96	2014/12/30	06:50:30	348.0000	5439.45	31.41	348.0000	5439.83	31.46	-0.38
97	2014/12/30	10:50:30	352.0000	5438.00	31.40	352.0000	5437.58	31.46	0.42
98	2014/12/30	14:50:30	356.0000	5436.97	31.41	356.0000	5436.95	31.46	0.02
99	2014/12/30	18:50:30	360.0000	5434.93	31.41	360.0000	5435.37	31.46	-0.44
100	2014/12/30	22:50:30	364.0000	5433.23	31.41	364.0000	5433.62	31.45	-0.39
101	2014/12/31	02:50:30	368.0000	5431.44	31.40	368.0000	5431.94	31.45	-0.50
102	2014/12/31	06:50:30	372.0000	5429.67	31.40	372.0000	5430.83	31.45	-1.16
103	2014/12/31	10:50:30	376.0000	5429.08	31.40	376.0000	5429.50	31.45	-0.42
104	2014/12/31	14:50:30	380.0000	5427.66	31.40	380.0000	5428.25	31.45	-0.59
105	2014/12/31	18:50:30	384.0000	5426.34	31.39	384.0000	5426.62	31.44	-0.28
106	2014/12/31	22:50:30	388.0000	5424.47	31.39	388.0000	5425.85	31.45	-1.38
107	2015/01/01	02:50:30	392.0000	5424.13	31.40	392.0000	5423.67	31.44	0.46
108	2015/01/01	06:50:30	396.0000	5422.43	31.40	396.0000	5422.93	31.44	-0.50
109	2015/01/01	10:50:30	400.0000	5420.50	31.40	400.0000	5421.91	31.44	-1.41
110	2015/01/01	14:50:30	404.0000	5420.15	31.39	404.0000	5420.67	31.44	-0.52
111	2015/01/01	18:50:30	408.0000	5418.75	31.39	408.0000	5419.26	31.44	-0.51
112	2015/01/01	22:50:30	412.0000	5417.11	31.39	412.0000	5417.87	31.44	-0.76
113	2015/01/02	02:50:30	416.0000	5416.55	31.39	416.0000	5416.86	31.44	-0.31
114	2015/01/02	06:50:30	420.0000	5415.46	31.39	420.0000	5416.31	31.43	-0.85
115	2015/01/02	10:50:30	424.0000	5414.68	31.39	424.0000	5415.40	31.43	-0.72
116	2015/01/02	14:50:30	428.0000	5413.56	31.39	428.0000	5412.96	31.43	0.60
117	2015/01/02	18:50:30	432.0000	5412.08	31.38	432.0000	5412.75	31.43	-0.67
118	2015/01/02	22:50:30	436.0000	5411.24	31.39	436.0000	5412.25	31.43	-1.01
119	2015/01/03	02:50:30	440.0000	5409.71	31.39	440.0000	5410.16	31.43	-0.45
120	2015/01/03	06:50:30	444.0000	5408.61	31.39	444.0000	5408.83	31.43	-0.22

LOWER Serial Number: V74 Start Date: 2014/12/15 18:50:30 Run Depth: 993.00
UPPER Serial Number: V7E Start Date: 2014/12/15 18:50:30 Run Depth: 993.00
Print Filter: Print every 4 hour

TUNDRA OIL & GAS PARTNERSHIP
102/04-20-007-28W1/00
Start Test Date: 2014/12/15
Final Test Date: 2015/01/21

RESERVOIR PRESSURE SURVEY
RECORDERS @ 993 mKBMD (937.646 TVD)

EWART UNIT 8 HZNTL (1A-20) 4B-20-7-28
Formation: BAKKEN

	LOWER Date yyyy/mm/dd	LOWER Clk Time hh:mm:ss	LOWER Time hr	LOWER Pres. kPa(a)	LOWER Temp. °C	UPPER Time hr	UPPER Pres. kPa(a)	UPPER Temp. °C	Diff. G1 - G2 kPa
121	2015/01/03	10:50:30	448.0000	5407.88	31.39	448.0000	5407.49	31.43	0.39
122	2015/01/03	14:50:30	452.0000	5405.52	31.38	452.0000	5405.67	31.43	-0.15
123	2015/01/03	18:50:30	456.0000	5404.21	31.39	456.0000	5404.59	31.42	-0.38
124	2015/01/03	22:50:30	460.0000	5402.55	31.38	460.0000	5404.14	31.42	-1.59
125	2015/01/04	02:50:30	464.0000	5401.78	31.39	464.0000	5401.73	31.42	0.05
126	2015/01/04	06:50:30	468.0000	5400.00	31.38	468.0000	5400.65	31.42	-0.65
127	2015/01/04	10:50:30	472.0000	5398.58	31.37	472.0000	5399.34	31.42	-0.76
128	2015/01/04	14:50:30	476.0000	5397.46	31.37	476.0000	5398.02	31.42	-0.56
129	2015/01/04	18:50:30	480.0000	5396.10	31.37	480.0000	5396.78	31.42	-0.68
130	2015/01/04	22:50:30	484.0000	5394.59	31.38	484.0000	5395.13	31.42	-0.54
131	2015/01/05	02:50:30	488.0000	5393.45	31.37	488.0000	5393.72	31.42	-0.27
132	2015/01/05	06:50:30	492.0000	5391.80	31.37	492.0000	5392.56	31.42	-0.76
133	2015/01/05	10:50:30	496.0000	5390.80	31.37	496.0000	5391.57	31.42	-0.77
134	2015/01/05	14:50:30	500.0000	5389.55	31.37	500.0000	5390.14	31.41	-0.59
135	2015/01/05	18:50:30	504.0000	5388.57	31.37	504.0000	5389.23	31.41	-0.66
136	2015/01/05	22:50:30	508.0000	5387.13	31.37	508.0000	5387.68	31.42	-0.55
137	2015/01/06	02:50:30	512.0000	5386.01	31.38	512.0000	5386.41	31.41	-0.40
138	2015/01/06	06:50:30	516.0000	5385.00	31.37	516.0000	5385.67	31.41	-0.67
139	2015/01/06	10:50:30	520.0000	5384.08	31.37	520.0000	5384.58	31.41	-0.50
140	2015/01/06	14:50:30	524.0000	5383.32	31.37	524.0000	5383.81	31.41	-0.49
141	2015/01/06	18:50:30	528.0000	5382.50	31.37	528.0000	5383.11	31.41	-0.61
142	2015/01/06	22:50:30	532.0000	5381.49	31.37	532.0000	5381.37	31.41	0.12
143	2015/01/07	02:50:30	536.0000	5380.52	31.37	536.0000	5380.99	31.41	-0.47
144	2015/01/07	06:50:30	540.0000	5379.65	31.37	540.0000	5380.31	31.41	-0.66
145	2015/01/07	10:50:30	544.0000	5378.70	31.37	544.0000	5379.22	31.41	-0.52
146	2015/01/07	14:50:30	548.0000	5377.31	31.36	548.0000	5378.62	31.41	-1.31
147	2015/01/07	18:50:30	552.0000	5376.52	31.37	552.0000	5376.96	31.41	-0.44
148	2015/01/07	22:50:30	556.0000	5375.12	31.37	556.0000	5376.47	31.41	-1.35
149	2015/01/08	02:50:30	560.0000	5373.35	31.37	560.0000	5374.46	31.41	-1.11
150	2015/01/08	06:50:30	564.0000	5373.71	31.37	564.0000	5374.23	31.41	-0.52
151	2015/01/08	10:50:30	568.0000	5373.09	31.37	568.0000	5373.74	31.41	-0.65
152	2015/01/08	14:50:30	572.0000	5372.62	31.37	572.0000	5372.93	31.41	-0.31
153	2015/01/08	18:50:30	576.0000	5371.90	31.37	576.0000	5372.35	31.41	-0.45
154	2015/01/08	22:50:30	580.0000	5371.15	31.36	580.0000	5371.71	31.41	-0.56
155	2015/01/09	02:50:30	584.0000	5370.41	31.37	584.0000	5371.04	31.41	-0.63
156	2015/01/09	06:50:30	588.0000	5369.78	31.36	588.0000	5370.30	31.41	-0.52
157	2015/01/09	10:50:30	592.0000	5369.22	31.36	592.0000	5369.75	31.41	-0.53
158	2015/01/09	14:50:30	596.0000	5367.91	31.36	596.0000	5368.94	31.41	-1.03
159	2015/01/09	18:50:30	600.0000	5367.82	31.35	600.0000	5368.43	31.40	-0.61
160	2015/01/09	22:50:30	604.0000	5367.38	31.36	604.0000	5367.77	31.40	-0.39

LOWER Serial Number: V74 Start Date: 2014/12/15 18:50:30 Run Depth: 993.00
UPPER Serial Number: V7E Start Date: 2014/12/15 18:50:30 Run Depth: 993.00
Print Filter: Print every 4 hour

TUNDRA OIL & GAS PARTNERSHIP
102/04-20-007-28W1/00
Start Test Date: 2014/12/15
Final Test Date: 2015/01/21

RESERVOIR PRESSURE SURVEY
RECORDERS @ 993 mKBMD (937.646 TVD)

EWART UNIT 8 HZNTL (1A-20) 4B-20-7-28
Formation: BAKKEN

	LOWER Date yyyy/mm/dd	LOWER Clk Time hh:mm:ss	LOWER Time hr	LOWER Pres. kPa(a)	LOWER Temp. °C	UPPER Time hr	UPPER Pres. kPa(a)	UPPER Temp. °C	Diff. G1 - G2 kPa
161	2015/01/10	02:50:30	608.0000	5366.45	31.36	608.0000	5367.01	31.40	-0.56
162	2015/01/10	06:50:30	612.0000	5365.98	31.36	612.0000	5366.49	31.41	-0.51
163	2015/01/10	10:50:30	616.0000	5365.34	31.36	616.0000	5365.87	31.40	-0.53
164	2015/01/10	14:50:30	620.0000	5365.31	31.35	620.0000	5365.17	31.40	0.14
165	2015/01/10	18:50:30	624.0000	5363.81	31.35	624.0000	5364.35	31.40	-0.54
166	2015/01/10	22:50:30	628.0000	5363.24	31.36	628.0000	5363.26	31.40	-0.02
167	2015/01/11	02:50:30	632.0000	5362.93	31.35	632.0000	5362.70	31.40	0.23
168	2015/01/11	06:50:30	636.0000	5361.65	31.36	636.0000	5362.13	31.40	-0.48
169	2015/01/11	10:50:30	640.0000	5360.89	31.36	640.0000	5361.60	31.40	-0.71
170	2015/01/11	14:50:30	644.0000	5359.99	31.35	644.0000	5360.13	31.40	-0.14
171	2015/01/11	18:50:30	648.0000	5358.83	31.36	648.0000	5359.77	31.40	-0.94
172	2015/01/11	22:50:30	652.0000	5358.74	31.36	652.0000	5358.93	31.40	-0.19
173	2015/01/12	02:50:30	656.0000	5357.53	31.35	656.0000	5358.29	31.40	-0.76
174	2015/01/12	06:50:30	660.0000	5356.96	31.35	660.0000	5357.35	31.40	-0.39
175	2015/01/12	10:50:30	664.0000	5356.01	31.36	664.0000	5356.62	31.40	-0.61
176	2015/01/12	14:50:30	668.0000	5355.13	31.36	668.0000	5355.48	31.40	-0.35
177	2015/01/12	18:50:30	672.0000	5353.98	31.35	672.0000	5354.55	31.40	-0.57
178	2015/01/12	22:50:30	676.0000	5353.78	31.36	676.0000	5353.26	31.40	0.52
179	2015/01/13	02:50:30	680.0000	5352.04	31.35	680.0000	5352.58	31.40	-0.54
180	2015/01/13	06:50:30	684.0000	5351.07	31.34	684.0000	5352.33	31.40	-1.26
181	2015/01/13	10:50:30	688.0000	5350.34	31.34	688.0000	5351.01	31.40	-0.67
182	2015/01/13	14:50:30	692.0000	5348.98	31.35	692.0000	5349.99	31.40	-1.01
183	2015/01/13	18:50:30	696.0000	5348.52	31.35	696.0000	5349.15	31.40	-0.63
184	2015/01/13	22:50:30	700.0000	5347.72	31.34	700.0000	5348.39	31.40	-0.67
185	2015/01/14	02:50:30	704.0000	5346.88	31.35	704.0000	5347.61	31.40	-0.73
186	2015/01/14	06:50:30	708.0000	5346.14	31.35	708.0000	5346.61	31.40	-0.47
187	2015/01/14	10:50:30	712.0000	5344.32	31.34	712.0000	5345.58	31.39	-1.26
188	2015/01/14	14:50:30	716.0000	5344.26	31.35	716.0000	5344.71	31.39	-0.45
189	2015/01/14	18:50:30	720.0000	5343.24	31.34	720.0000	5343.74	31.39	-0.50
190	2015/01/14	22:50:30	724.0000	5342.35	31.34	724.0000	5343.59	31.39	-1.24
191	2015/01/15	02:50:30	728.0000	5341.16	31.34	728.0000	5342.15	31.39	-0.99
192	2015/01/15	06:50:30	732.0000	5341.16	31.35	732.0000	5341.96	31.39	-0.80
193	2015/01/15	10:50:30	736.0000	5340.24	31.34	736.0000	5341.47	31.39	-1.23
194	2015/01/15	14:50:30	740.0000	5339.45	31.35	740.0000	5339.88	31.39	-0.43
195	2015/01/15	18:50:30	744.0000	5338.43	31.35	744.0000	5339.07	31.39	-0.64
196	2015/01/15	22:50:30	748.0000	5337.03	31.34	748.0000	5338.07	31.39	-1.04
197	2015/01/16	02:50:30	752.0000	5337.06	31.35	752.0000	5336.50	31.39	0.56
198	2015/01/16	06:50:30	756.0000	5336.32	31.35	756.0000	5337.52	31.39	-1.20
199	2015/01/16	10:50:30	760.0000	5335.38	31.35	760.0000	5335.83	31.39	-0.45
200	2015/01/16	14:50:30	764.0000	5334.58	31.35	764.0000	5335.43	31.39	-0.85

LOWER Serial Number: V74 Start Date: 2014/12/15 18:50:30 Run Depth: 993.00
UPPER Serial Number: V7E Start Date: 2014/12/15 18:50:30 Run Depth: 993.00
Print Filter: Print every 4 hour

TUNDRA OIL & GAS PARTNERSHIP
102/04-20-007-28W1/00
Start Test Date: 2014/12/15
Final Test Date: 2015/01/21

EWART UNIT 8 HZNTL (1A-20) 4B-20-7-28
Formation: BAKKEN

RESERVOIR PRESSURE SURVEY
RECORDERS @ 993 mKBMD (937.646 TVD)

	LOWER Date yyyy/mm/dd	LOWER Clk Time hh:mm:ss	LOWER Time hr	LOWER Pres. kPa(a)	LOWER Temp. °C	UPPER Time hr	UPPER Pres. kPa(a)	UPPER Temp. °C	Diff. G1 - G2 kPa
201	2015/01/16	18:50:30	768.0000	5332.72	31.35	768.0000	5334.71	31.39	-1.99
202	2015/01/16	22:50:30	772.0000	5332.46	31.35	772.0000	5333.24	31.39	-0.78
203	2015/01/17	02:50:30	776.0000	5331.98	31.34	776.0000	5332.31	31.39	-0.33
204	2015/01/17	06:50:30	780.0000	5330.25	31.35	780.0000	5331.72	31.39	-1.47
205	2015/01/17	10:50:30	784.0000	5330.57	31.35	784.0000	5330.89	31.39	-0.32
206	2015/01/17	14:50:30	788.0000	5330.09	31.35	788.0000	5330.25	31.39	-0.16
207	2015/01/17	18:50:30	792.0000	5329.02	31.35	792.0000	5329.71	31.39	-0.69
208	2015/01/17	22:50:30	796.0000	5327.97	31.35	796.0000	5328.84	31.39	-0.87
209	2015/01/18	02:50:30	800.0000	5327.25	31.34	800.0000	5327.97	31.39	-0.72
210	2015/01/18	06:50:30	804.0000	5326.88	31.34	804.0000	5327.55	31.39	-0.67
211	2015/01/18	10:50:30	808.0000	5326.33	31.35	808.0000	5326.58	31.39	-0.25
212	2015/01/18	14:50:30	812.0000	5326.04	31.34	812.0000	5326.06	31.39	-0.02
213	2015/01/18	18:50:30	816.0000	5324.76	31.34	816.0000	5325.48	31.39	-0.72
214	2015/01/18	22:50:30	820.0000	5323.70	31.34	820.0000	5324.53	31.39	-0.83
215	2015/01/19	02:50:30	824.0000	5323.43	31.34	824.0000	5323.88	31.40	-0.45
216	2015/01/19	06:50:30	828.0000	5322.77	31.35	828.0000	5323.20	31.40	-0.43
217	2015/01/19	10:50:30	832.0000	5321.95	31.35	832.0000	5323.02	31.40	-1.07
218	2015/01/19	14:50:30	836.0000	5321.49	31.35	836.0000	5321.97	31.40	-0.48
219	2015/01/19	18:50:30	840.0000	5321.09	31.36	840.0000	5321.61	31.42	-0.52
220	2015/01/19	22:50:30	844.0000	5320.31	31.38	844.0000	5321.04	31.43	-0.73
221	2015/01/20	02:50:30	848.0000	5319.36	31.38	848.0000	5319.92	31.43	-0.56
222	2015/01/20	06:50:30	852.0000	5319.06	31.37	852.0000	5319.70	31.43	-0.64
223	2015/01/20	10:50:30	856.0000	5318.31	31.38	856.0000	5319.21	31.43	-0.90
224	2015/01/20	14:50:30	860.0000	5317.89	31.38	860.0000	5318.49	31.43	-0.60
225	2015/01/20	18:50:30	864.0000	5317.52	31.38	864.0000	5317.90	31.43	-0.38
226	2015/01/20	22:50:30	868.0000	5316.71	31.38	868.0000	5317.29	31.43	-0.58
227	2015/01/21	02:50:30	872.0000	5316.16	31.39	872.0000	5316.71	31.43	-0.55
228	2015/01/21	06:50:30	876.0000	5315.84	31.39	876.0000	5316.37	31.43	-0.53
229	2015/01/21	10:50:30	880.0000	5315.24	31.39	880.0000	5316.56	31.43	-1.32
230	2015/01/21	13:00:30	882.1667	5314.76	31.39	882.1667	5314.93	31.43	-0.17
231	2015/01/21	13:00:30	882.1667	FINAL PRESSURE, UNSETTING BRIDGE PLUG					
232	2015/01/21	13:01:00	882.1750	9795.20	31.39	882.1750	9794.51	31.47	0.69
233	2015/01/21	13:01:00	882.1750	BRIDGE PLUG IS UNSET					
234	2015/01/21	13:01:30	882.1833	9760.36	31.27	882.1833	9756.64	31.39	3.72
235	2015/01/21	13:19:30	882.4833	9636.92	29.99	882.4833	9611.38	30.10	25.54
236	2015/01/21	13:19:30	882.4833	PULL OUT OF HOLE					
237	2015/01/21	13:20:00	882.4917	9577.00	29.94	882.4917	9581.28	30.07	-4.28
238	2015/01/21	14:50:30	884.0000	110.23	12.64	884.0000	110.24	13.19	-0.01
239	2015/01/21	15:38:00	884.7917	108.99	17.45	884.7917	111.44	19.29	-2.45
240	2015/01/21	15:38:00	884.7917	RECORDERS AT SURFACE					

LOWER Serial Number: V74 Start Date: 2014/12/15 18:50:30 Run Depth: 993.00
UPPER Serial Number: V7E Start Date: 2014/12/15 18:50:30 Run Depth: 993.00
Print Filter: Print every 4 hour



DATE: December 15 th , 2014 - January 21 st , 2015	COMPANY: Tundra Oil & Gas Partnership
WELLNAME: Sinclair	ADDRESS: Virden, MB
LOCATION: 1A-20-4-20-7-28 W1	UWI: 102.04-20-007-28W1.00
FIELD: Sinclair	FORMATION: Bakken
CO HQ REP: Craig Lane	PHONE: 1204 748 4409
FIELD REP: Bruce Dunning	PHONE: 1204 851 5822
REPORTS TO (NAME & EMAIL ADDRESS):	
brett.howell@tundraoilandgas.com	
chris.perkins@tundraoilandgas.com	
robert.prefontaine@tundraoilandgas.com	
adam.berke@tundraoilandgas.com	
shirley.angus@tundraoilandgas.com	
allan.bertram@tundraoilandgas.com	
bill.jenkins@tundraoilandgas.com	
chris.perkins@tundraoilandgas.com	
craig.lane@tundraoilandgas.com	
eric.bjornsson@tundraoilandgas.com	
jane.mctaggart@tundraoilandgas.com	
anh.hgyen@tundraoilandgas.com	
justin.robertson@tundraoilandgas.com	
andrew.taylor@tundraoilandgas.com	
tim.howell@tundraoilandgas.com	
tyler.routledge@tundraoilandgas.com	

STATUS: Oil Well		TEST TYPE: Bridge Plug
ESTIMATED H2S CONTENT: <10 ppm		ESTIMATED CO2 CONTENT: <10 ppm
PRODUCING THROUGH: Tubing		SHUT IN TIME/DATE: See Discription
KOP: 764 mKB	TVD: See Survey	LICENCE #: 10214
PBTD: N/A	TD: 2324.50 mKB	WELL TYPE: Horizontal
CASING SIZE: 177.8 mm	CSG WEIGHT: 34.22 / 29.76 kg/m	CSG DEPTH: 1058 mKB
TUBING SIZE: N/A	TBG WEIGHT: N/A	TBG DEPTH: N/A
Elevations KB: 498.28 mKB	GRD: 494.18 mKB	CF: 4.10 mKB

PRODUCING INTERVAL

TYPE: Open Hole	SIZE: N/A	INTERVAL: 1058 - 2324 mKB
-----------------	-----------	---------------------------

RECORDED INFORMATION

TOP S/N: V7E	FILE NAME: 1A-20-4-20-7-28 W1	RANGE: 20,680 kPa
BOTTOM S/N: V74	FILE NAME: 1A-20-4-20-7-28 W1	RANGE: 20,680 kPa
TOP BATTERY S/N: N/A		BOTTOM BATTERY S/N: N/A
CONNECT TIME: December 15 th , 2014 18:50:30		DISCONNECT TIME: January 22 nd , 2015 11:23:00

SURFACE TEMP: -15 C	LEASE CONDITION: Good
WIRELINE OPERATOR:Ivory Herman	PHONE:1306 461 9504
WIRELINE ASSISSTANT: N/A	
DIRECTIONS: N/A	

DWG WELL HEAD PRESSURES:

TUBING (before survey): N/A	CASING (before survey): N/A
TUBING (after survey): N/A	CASING (after survey): N/A

FLUID LEVEL: N/A	RUN DEPTH: N/A
TIME ON BOTTOM: N/A	TIME OFF BOTTOM: N/A

GRADIENT STOPS

DEPTH mKB:	N/A	FROM:	N/A	UNTIL:	N/A
------------	-----	-------	-----	--------	-----

COMMENTS: Tools were ran in the well by a drilling rig to collect the BHP + BHT below a bridge plug. Tools were then pulled by the servie rig.

DESCRIPTION OF WORK DONE:

Tools were ran in the well by a drilling rig to collect the BHP + BHT below a bridge plug. Tools were then pulled by the service rig.

December 15th, 2014

18:50:30 - RIH

19:55:00 - On bottom

20:00:00 - Bridge plug set @992 mKB Recorders @993 mKB

January 21st, 2015

13:00:30 - FINAL STABLE BHP + BHT

13:01:00 - Bridge plug un-set

13:19:30 - POOH

15:38:00 - Surface

January 22nd, 2015

11:23:00 - Download data