

KOLA UNIT NO. 1
WATERFLOOD EOR PROJECT
ANNUAL REPORT FOR 2010

July 28, 2011

Tundra Oil and Gas Partnership

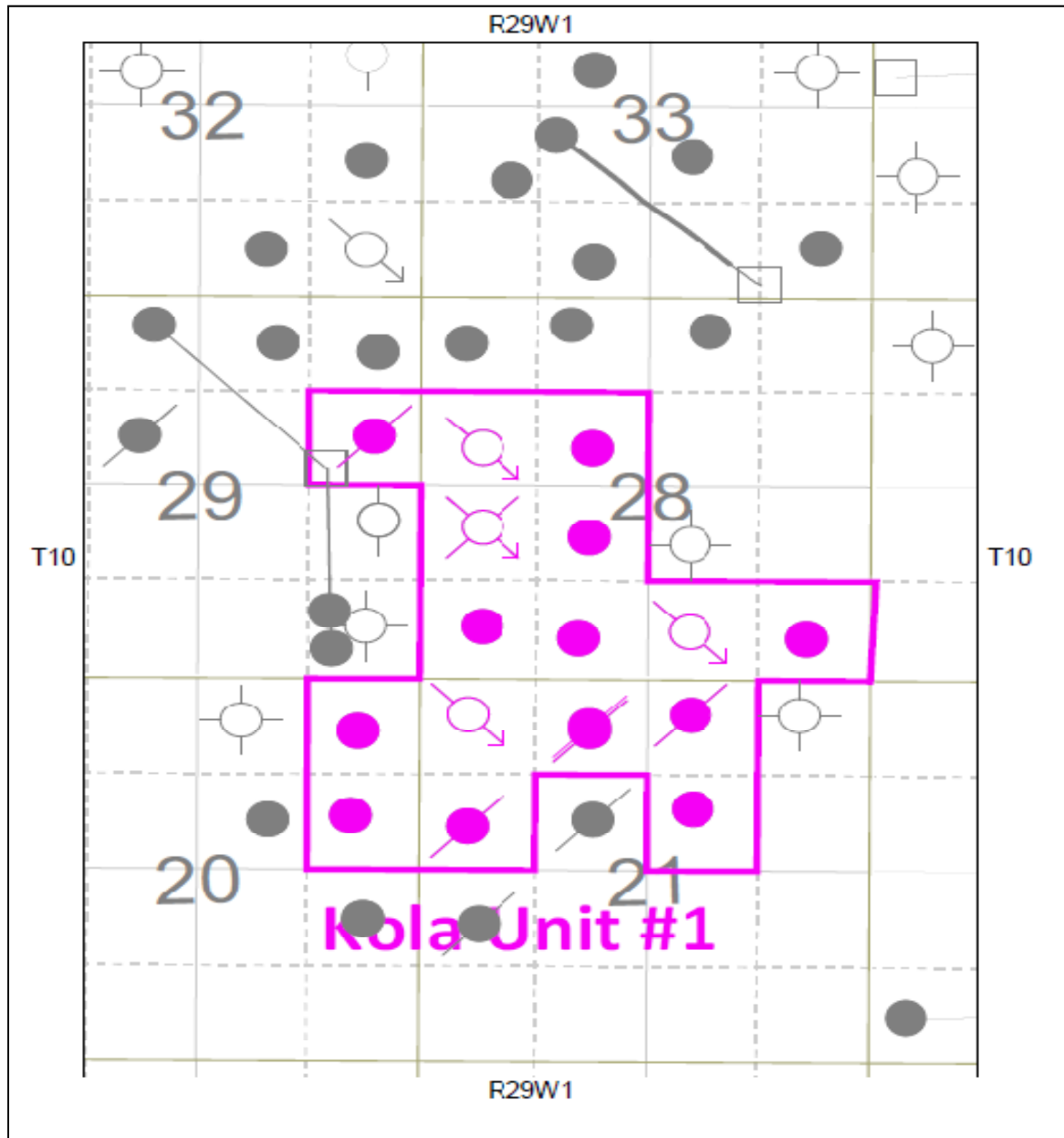
Table of Contents

INTRODUCTION	3
DISCUSSION	4
Production History	4
Waterflood History	5
Waterflood EOR Operating Strategy and Performance	6
Water Source and Quality	6
Injection Wellhead Pressures	6
Reservoir Pressure	6
Well Servicing	6
Voidage Replacement	6
Waterflood Performance Discussion	6
List of Appendices	8
Appendix A: Well Name and Well Status	
Appendix B: Monthly Injection Wellhead Pressures Table and Plots	
Appendix C: Kola Unit No. 1 Injection Pattern Summary	
Appendix D: Injector Pattern Production/Injection Rates, Cumulative and VRRs, Plots and Tables	

INTRODUCTION

Kola Unit No. 1 Enhanced Oil Recovery (EOR) Waterflood Project was approved under Board Order No. PM 71 effective October 1, 1993 with Tundra Oil and Gas Ltd. as Operator. The EOR project area contains 17 wells in 16 LSDs in Township 10, Range 29 W1 as shown in the figure below. Well list and well status is available in Appendix A.

Figure 1: Kola Unit No. 1 Area Outline



In accordance with Section 73 of the Manitoba Drilling and Production Regulation, Tundra hereby submits the 2010 Annual Progress Report for Kola Unit No. 1 as required by Board Order No. PM 71.

DISCUSSION

Production History

For the wells included in Kola Unit No. 1, production started in October 1985 with 00/13-21-010-29W1/0 well. Oil production peaked at 41.5 m³/d in February 1988. The water oil ratio (WOR) averaged 11 m³/m³ over the last half of 2010. The Unit was producing 3.73 m³/d of oil and 41.1 m³/d of water, in December 2010. The oil production rate, injection rate, and WOR during each month for each injection pattern and for whole project are presented in Appendix D. The rates and WOR are presented in Figure 2.

Figure 2: Kola Unit No. 1 Production/Injection Rates and WOR vs Time

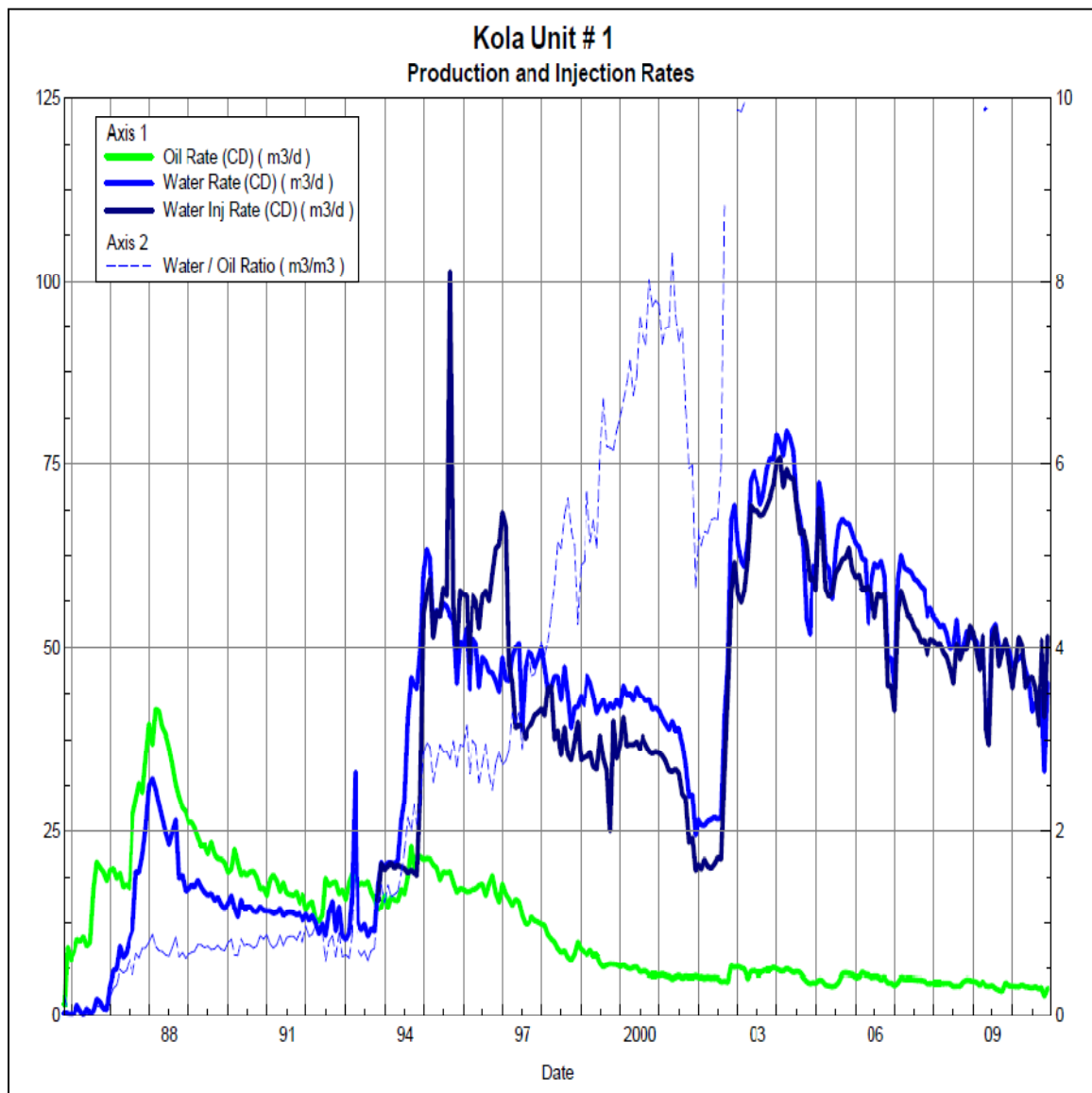
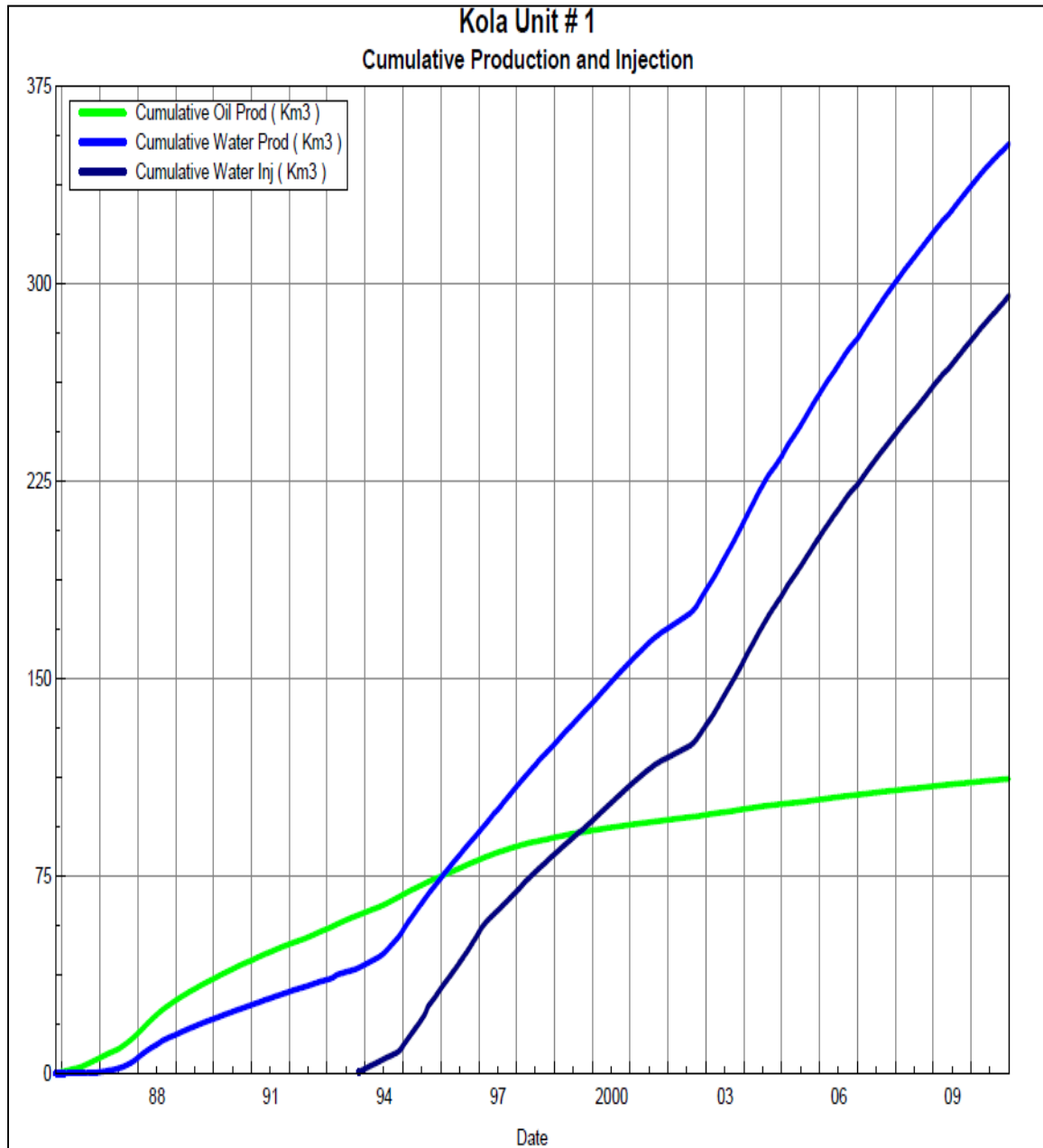


Figure 3 shows the cumulative production for Kola Unit No. 1 to the end of December 2010 as 112 E³m³ of oil, and 353 E³m³ of water. The cumulative water injected is over 296 E³m³. Original Oil In Place (OOIP) of Kola Unit No. 1 is estimated at 1547 E³m³. In

2010, recovery factor of Kola Unit No. 1 is 7.2%. The cumulative volume of oil, and water produced and fluid injected for each injection pattern and for the whole project for each injection well is presented in Appendix D.

Figure 3: Kola Unit No. 1 Cumulative Oil, Water and Water Injected vs. Time



Waterflood History

As of December 2010 the Unit has 3 active vertical injectors. At year end 2010, Kola Unit No. 1 waterflood area had 3 injector patterns in place. Water injection started in October 1993. An overall summary for each injector pattern is presented in Appendix B.

Any future revisions to the waterflood development or surveillance plan would be based on new production or performance response data, technical studies, or observed reservoir behavior and reserves recovery interpretations.

Waterflood EOR Operating Strategy and Performance

Water Source and Quality

Injected fluid consists of water producing from the Lodgepole formation, from the unit and surrounding area. Water is filtered to 25 microns prior to re-injection.

Injection Wellhead Pressures

The Average monthly wellhead injection pressures for each injection well are summarized in Appendix B, and shows all injection pressure since 2003. Average pressure for injector 00/12-28-010-29-010-29W1 is 5820 kPag, 8023 kPag for injector 00/13-21-010-39W and 5781 kPag for Average pressure for injector 00/02-28-010-29W1.

Reservoir Pressure

No reservoir pressure measurements were taken at Kola Unit No. 1, in 2010.

Well Servicing

No maintenance was required on the 9 wells in Kola Unit No. 1, in 2010.

Voidage Replacement

Cumulative voidage for the Kola Unit No. 1 was 0.764 in December 2010. As of 1997, monthly voidage is significantly greater than 1, which puts the Kola Unit No. 1 on track to achieve a cumulative VRR of 1. Calculation, plots and tables of the Voidage replacement ratio on a monthly and cumulative basis for each injection pattern and for the project area are presented in Appendix D.

Waterflood Performance Discussion

The OOIP of Kola Unit No. 1 is estimated at 1547 E³m³. In 2010, recovery factor of Kola Unit No. 1 is 7.2% based on 112,000 m³ of cumulative oil recovered to date. The ultimate expected recoverable reserve based on decline analysis is 127,000 m³ or an ultimate recovery factor of 8.2%.

The overall performance of this waterflood has been poor as indicated by low recovery factors, and poor waterflood response. Any increased or supported oil rates, that may be as a result of injected water sweeping the reservoir, are not sustained for a very long time.

Trends in production are very stable and at a mature state. No changes are anticipated in the future trends. While overall cumulative voidage is above unity, an examination of the individual patterns reveals that injected water should be diverted from the 12-28 pattern to the 13-21 and 7-28 patterns, which are under-injected. There is the possibility of an additional injector well to improve sweep efficiency in an area of the reservoir with no waterflood response, and even additional development is possible.

Optimization of the waterflood will be evaluated to inject water in under-supported areas of the pool, with consideration for additional injection. Also, facility enhancements in the area may increase water handling capacity so that sufficient water volumes can be provided to the pool.

List of Appendices

Appendix A: Well Name and Well Status

Appendix B: Monthly Injection Wellhead Pressures Table and Plots

Appendix C: Kola Unit No. 1 Injection Pattern Summary

Appendix D: Injector Pattern Production/Injection Rates, Cumulative and VRRs

Plots and Tables for the following injectors:

00/02-28-010-29W1

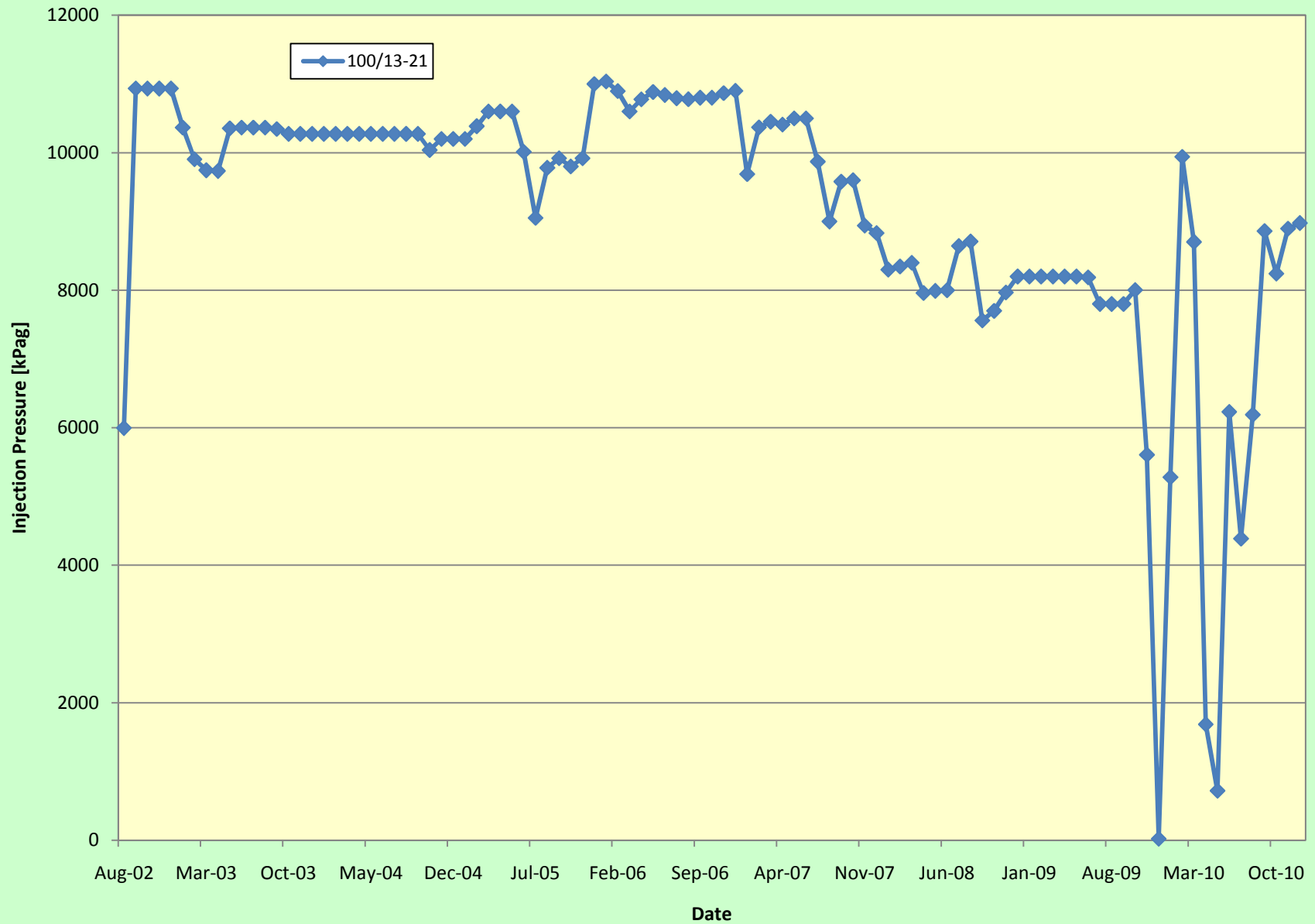
00/12-28-010-29W1

00/13-21-010-29W1

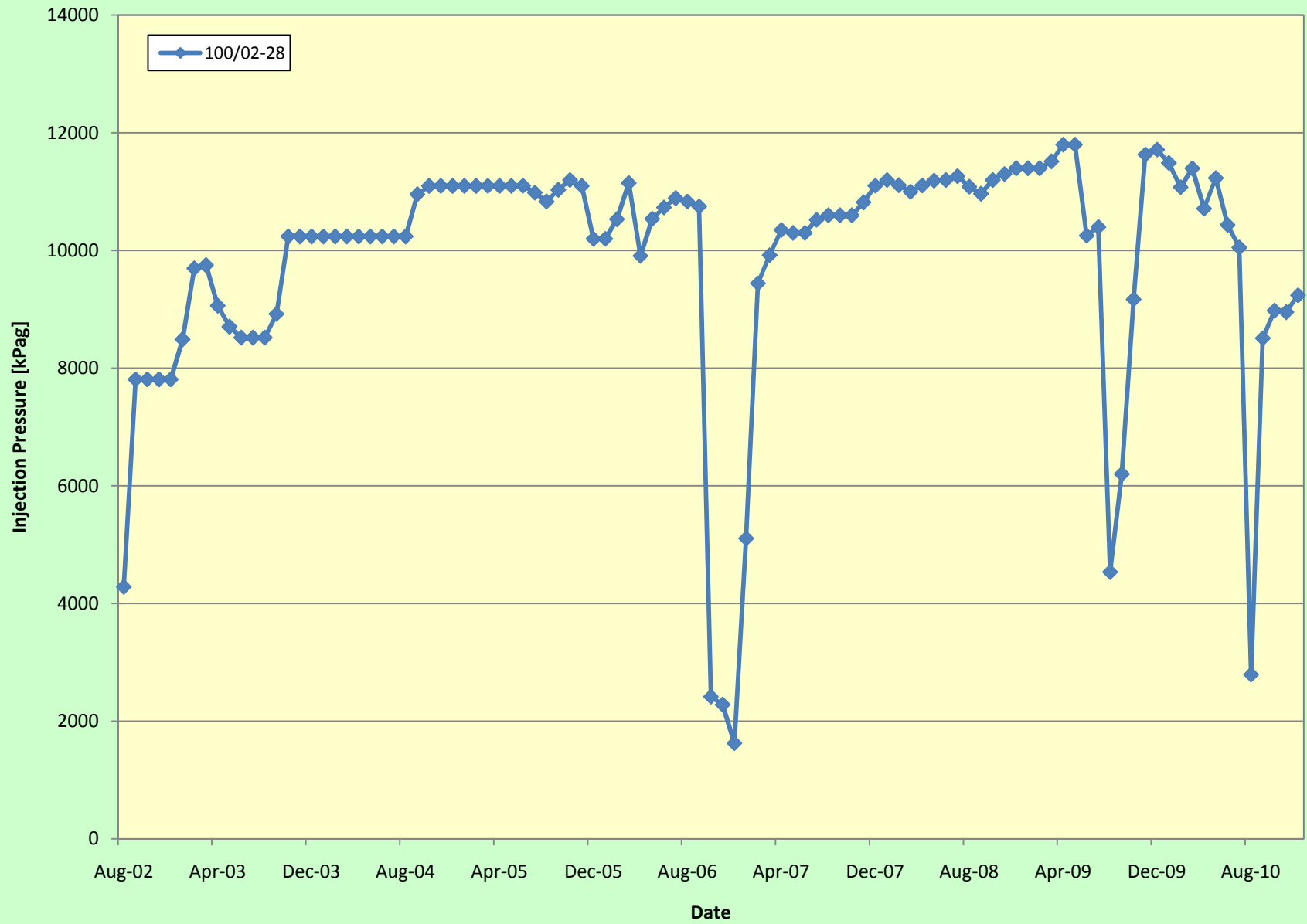
Appendix A

UWI	Well Status
100/09-20-010-29W1/00	Capable of OIL Prod
100/16-20-010-29W1/00	Capable of OIL Prod
100/10-21-010-29W1/00	Capable of OIL Prod
100/12-21-010-29W1/00	ABD Producer
100/13-21-010-29W1/00	WTR Injection
100/14-21-010-29W1/00	ABD Producer
100/14-21-010-29W1/02	ABD Producer
100/15-21-010-29W1/00	ABD Producer
100/01-28-010-29W1/00	Capable of OIL Prod
100/02-28-010-29W1/00	WTR Injection
100/03-28-010-29W1/00	Capable of OIL Prod
100/04-28-010-29W1/00	Capable of OIL Prod
100/05-28-010-29W1/00	ABD WTR Injection
100/06-28-010-29W1/00	Capable of OIL Prod
100/11-28-010-29W1/00	Capable of OIL Prod
100/12-28-010-29W1/00	WTR Injection
100/09-29-010-29W1/00	ABD Producer

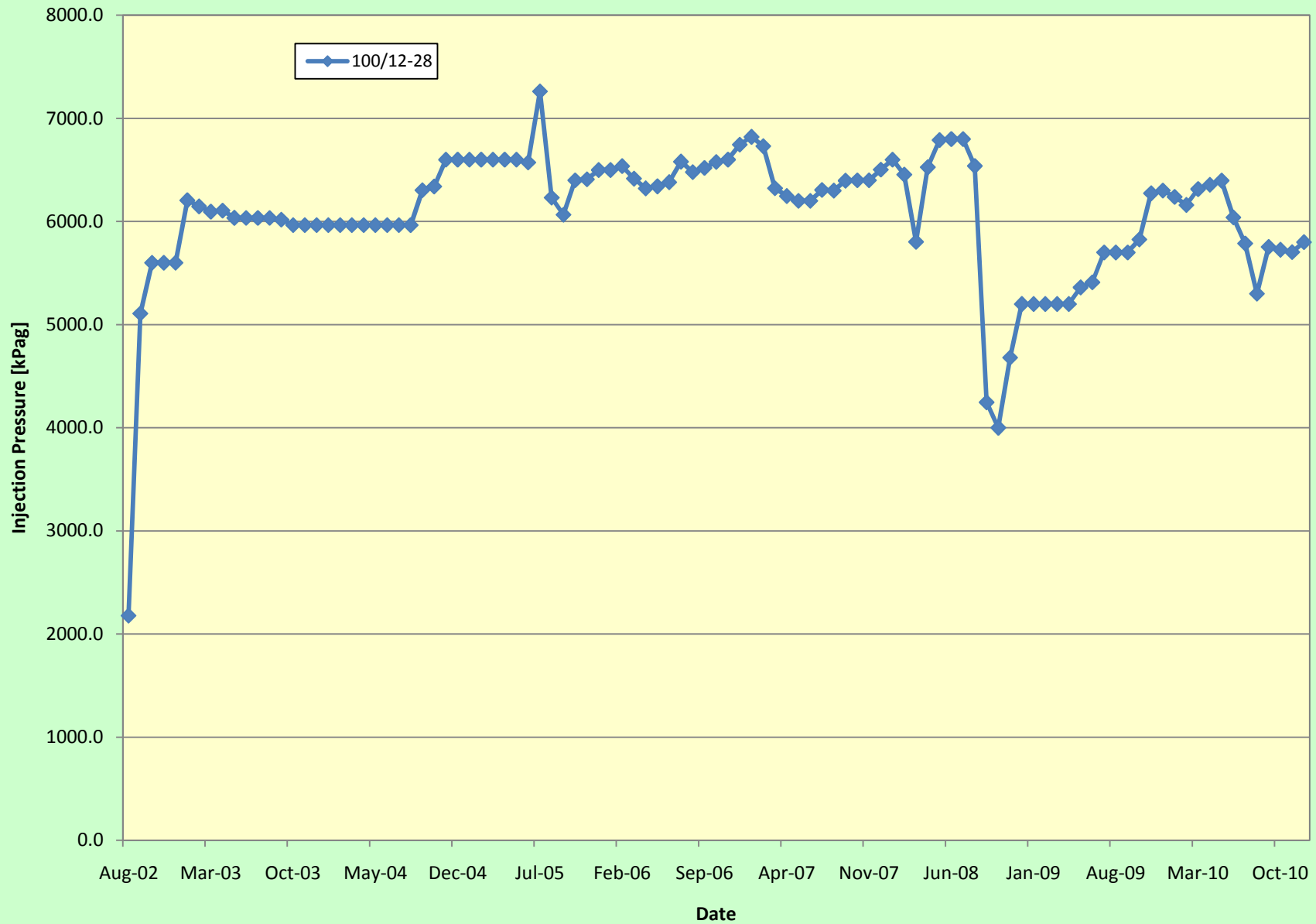
100/13-21 Injection Pressures vs Time



100/02-28 Injection Pressures vs Time



100/12-28 Injection Pressures vs Time



Pattern Name	Injector Location (010-29W)	Injector Surf. Location (010-29W1)	Status	Supported Wells (010-29W1)	No. of Support ed Wells	Allocatio n Factor	Pattern Prod Start Month	Inj Start Month	Oil Rate (m³/d)	Water Rate (m³/d)	WOR (m³/m³)	Water Injection (m³/d)	Cum Oil (E³m³)	Cum Water (E³m³)	Cum Inj Water (E³m³)	Monthly VRR	Cum VRR
00/02-28-010-29W1 Injector	00/02-28	Vertical Well	WTR Injection	01-28, 03-28, 10-21, 14-21, 14-21/2, 15-21	6	1	Jun 1987	Aug 1995	1.1	17.2	15.64	8.7	27.1	150.0	57.7	0.5	0.37
00/13-21-010-29W1 Injector	00/13-21	Vertical Well	WTR Injection	03-28, 04-28, 09-20, 12-21, 14-21, 14-21/2, 16-20	7	1	Oct 1985	Oct 1993	1.9	17.4	9.35	6.4	57.7	120.8	70.2	0.4	0.51
00/12-28-010-29W1 Injector	00/12-28	Vertical Well	WTR Injection	05-28, 06-28, 09-29, 11-28	4	1	Dec 1986	Nov 1994	0.8	6.5	8.47	34.5	27.0	82.1	167.2	5.2	1.86

Appendix C

Oil Formation Vol. Factor : 1.05 m3/m3

Completions Selected (17)

Water Formation Vol Factor : 1.00 m3/m3

July 19, 2011

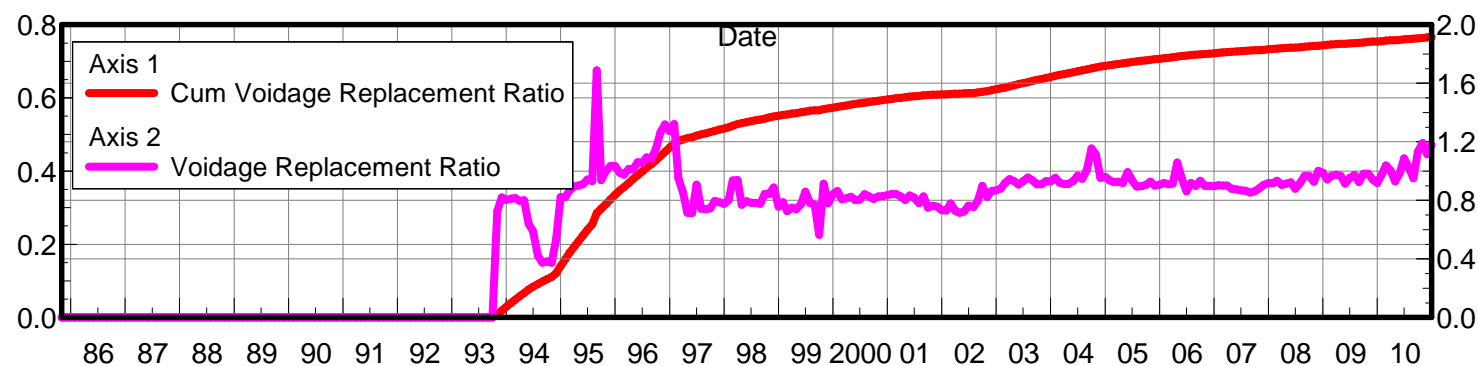
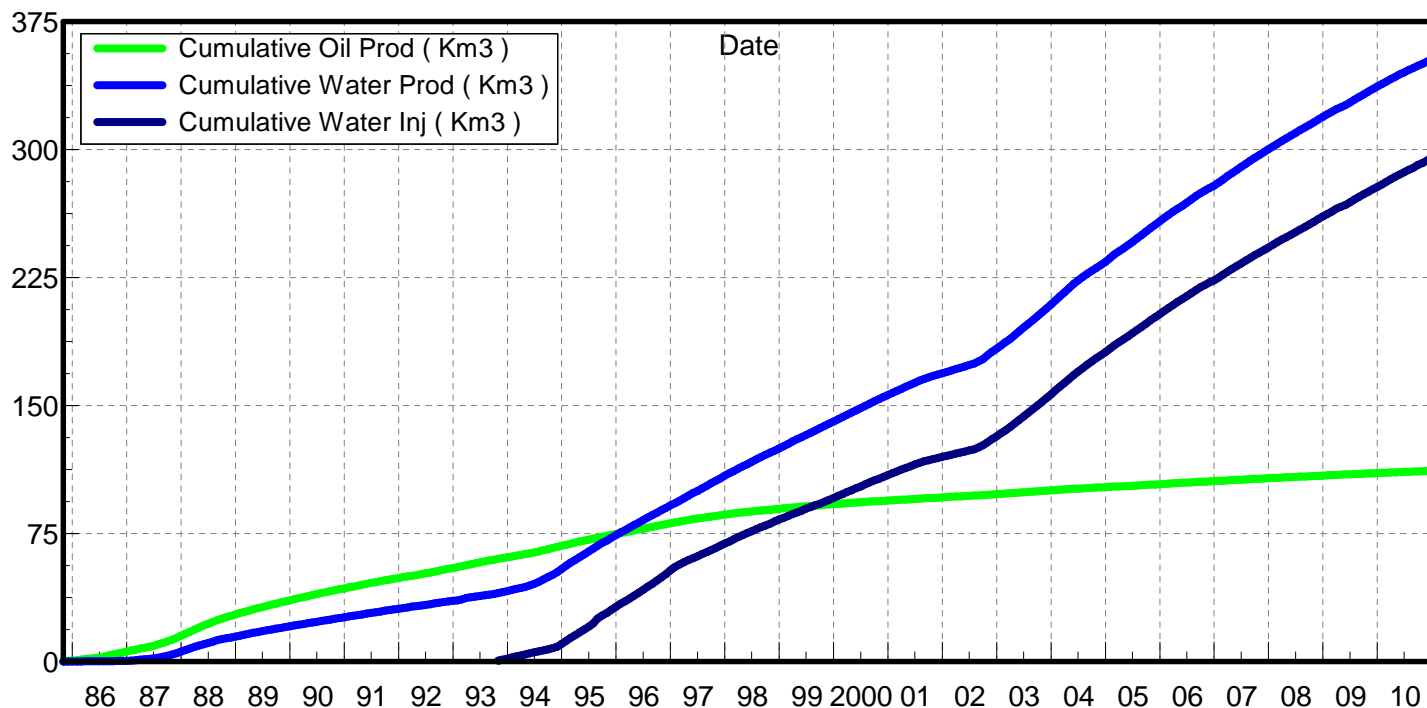
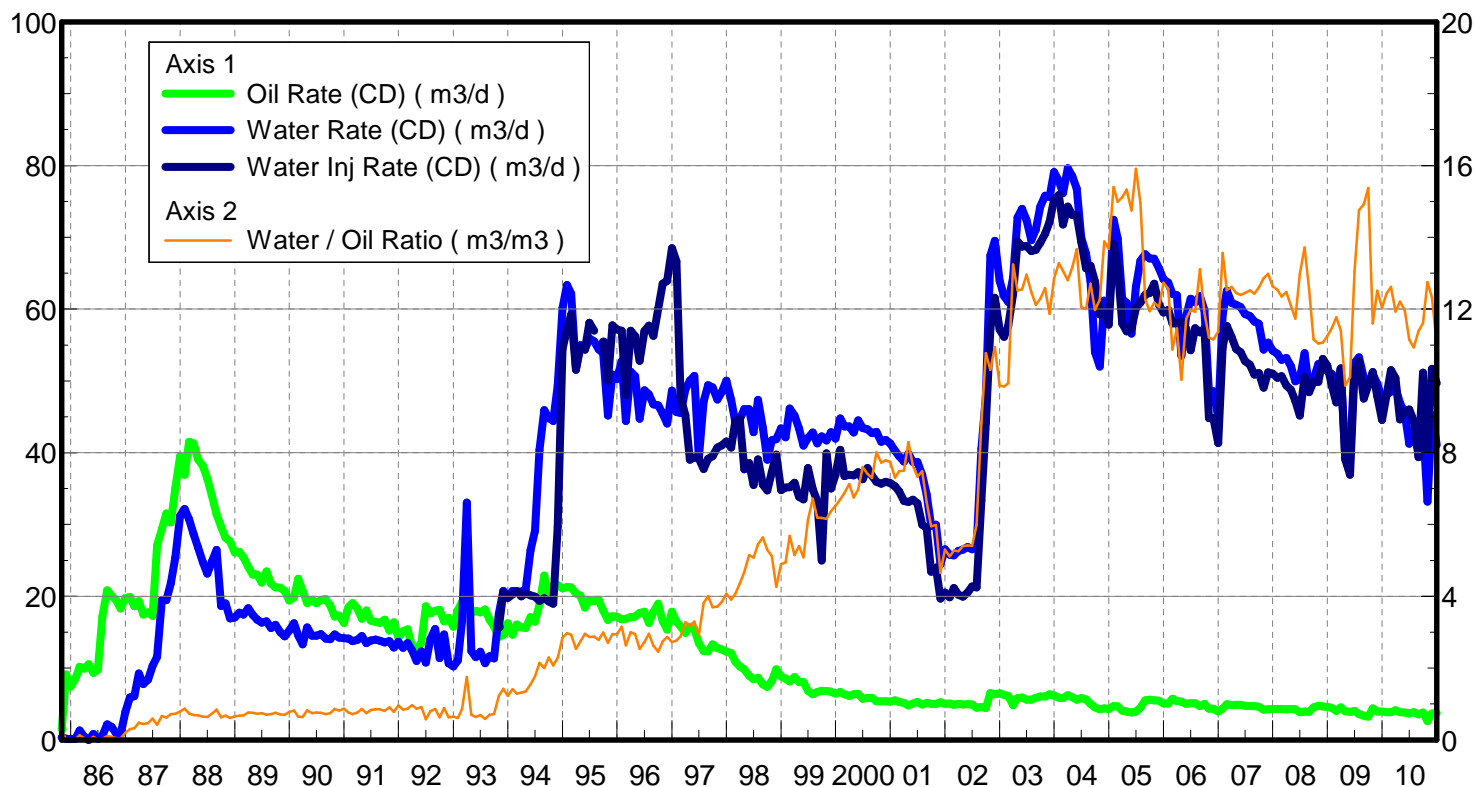
Water / Oil Ratio : 11.58 m3/m3

Operator: Tundra_Oil_and_Gas_Patnership

Oil Rate (CD) : 3.75 m3/d

Water Rate (CD) : 43.39 m3/d

Water Inj Rate (CD) : 49.38 m3/d



Date

Date	Oil Rate (CD) m3/d	Water Rate (CD) m3/d	Water Oil Ratio m3/m3	Water Inj Rate (CD) m3/d	Cum Oil Prod Km3	Cum Water Prod Km3	Cum Water Inj Km3	Voidage Replacement Ratio	Cum Voidage Replacement Ratio
10/31/1985	1.49	0.32	0.22		0.05	0.01	0.00	0.000	0.000
11/30/1985	9.11	0.17	0.02		0.32	0.02	0.00	0.000	0.000
12/31/1985	7.43	0.12	0.02		0.55	0.02	0.00	0.000	0.000
1/31/1986	8.55	0.15	0.02		0.81	0.02	0.00	0.000	0.000
2/28/1986	10.19	1.34	0.13		1.10	0.06	0.00	0.000	0.000
3/31/1986	9.92	0.49	0.05		1.41	0.08	0.00	0.000	0.000
4/30/1986	10.56	0.00	0.00		1.72	0.08	0.00	0.000	0.000
5/31/1986	9.32	0.83	0.09		2.01	0.10	0.00	0.000	0.000
6/30/1986	9.77	0.18	0.02		2.31	0.11	0.00	0.000	0.000
7/31/1986	17.18	0.56	0.03		2.84	0.12	0.00	0.000	0.000
8/31/1986	20.82	2.18	0.10		3.48	0.19	0.00	0.000	0.000
9/30/1986	20.09	1.79	0.09		4.09	0.25	0.00	0.000	0.000
10/31/1986	19.45	0.90	0.05		4.69	0.27	0.00	0.000	0.000
11/30/1986	18.28	0.78	0.04		5.24	0.30	0.00	0.000	0.000
12/31/1986	19.76	3.92	0.20		5.85	0.42	0.00	0.000	0.000
1/31/1987	19.90	5.91	0.30		6.47	0.60	0.00	0.000	0.000
2/28/1987	18.60	6.09	0.33		6.99	0.77	0.00	0.000	0.000
3/31/1987	19.31	9.27	0.48		7.59	1.06	0.00	0.000	0.000
4/30/1987	17.45	7.77	0.45		8.11	1.29	0.00	0.000	0.000
5/31/1987	17.77	8.41	0.47		8.66	1.55	0.00	0.000	0.000
6/30/1987	17.30	10.31	0.60		9.18	1.86	0.00	0.000	0.000
7/31/1987	27.08	11.59	0.43		10.02	2.22	0.00	0.000	0.000
8/31/1987	29.36	19.50	0.66		10.93	2.83	0.00	0.000	0.000
9/30/1987	31.52	19.44	0.62		11.88	3.41	0.00	0.000	0.000
10/31/1987	30.30	21.81	0.72		12.82	4.09	0.00	0.000	0.000
11/30/1987	35.08	25.40	0.72		13.87	4.85	0.00	0.000	0.000
12/31/1987	39.51	31.23	0.79		15.09	5.82	0.00	0.000	0.000
1/31/1988	36.91	32.18	0.87		16.24	6.81	0.00	0.000	0.000
2/29/1988	41.51	30.74	0.74		17.44	7.70	0.00	0.000	0.000
3/31/1988	41.28	28.69	0.70		18.72	8.59	0.00	0.000	0.000
4/30/1988	39.09	26.79	0.69		19.89	9.40	0.00	0.000	0.000
5/31/1988	38.18	24.75	0.65		21.08	10.17	0.00	0.000	0.000
6/30/1988	36.38	23.15	0.64		22.17	10.86	0.00	0.000	0.000
7/31/1988	34.07	24.82	0.73		23.22	11.63	0.00	0.000	0.000
8/31/1988	31.39	26.47	0.84		24.20	12.45	0.00	0.000	0.000
9/30/1988	29.71	18.64	0.63		25.09	13.01	0.00	0.000	0.000
10/31/1988	28.16	19.02	0.68		25.96	13.60	0.00	0.000	0.000
11/30/1988	27.66	16.92	0.61		26.79	14.11	0.00	0.000	0.000
12/31/1988	26.12	17.07	0.65		27.60	14.64	0.00	0.000	0.000
1/31/1989	26.19	17.71	0.68		28.41	15.18	0.00	0.000	0.000
2/28/1989	25.43	17.44	0.69		29.12	15.67	0.00	0.000	0.000
3/31/1989	24.11	18.35	0.76		29.87	16.24	0.00	0.000	0.000
4/30/1989	23.01	17.43	0.76		30.56	16.76	0.00	0.000	0.000
5/31/1989	23.02	16.73	0.73		31.28	17.28	0.00	0.000	0.000
6/30/1989	21.90	16.32	0.75		31.93	17.77	0.00	0.000	0.000
7/31/1989	23.45	16.53	0.70		32.66	18.29	0.00	0.000	0.000
8/31/1989	21.78	15.59	0.72		33.33	18.77	0.00	0.000	0.000
9/30/1989	21.26	16.03	0.75		33.97	19.25	0.00	0.000	0.000

Date	Oil Rate (CD) m3/d	Water Rate (CD) m3/d	Water Oil Ratio m3/m3	Water Inj Rate (CD) m3/d	Cum Oil Prod Km3	Cum Water Prod Km3	Cum Water Inj Km3	Voidage Replacement Ratio	Cum Voidage Replacement Ratio
10/31/1989	21.19	14.99	0.71		34.63	19.71	0.00	0.000	0.000
11/30/1989	20.74	14.43	0.70		35.25	20.15	0.00	0.000	0.000
12/31/1989	19.42	15.20	0.78		35.85	20.62	0.00	0.000	0.000
1/31/1990	19.86	16.25	0.82		36.47	21.12	0.00	0.000	0.000
2/28/1990	22.46	14.55	0.65		37.10	21.53	0.00	0.000	0.000
3/31/1990	20.75	13.32	0.64		37.74	21.94	0.00	0.000	0.000
4/30/1990	19.07	15.66	0.82		38.31	22.41	0.00	0.000	0.000
5/31/1990	19.51	14.51	0.74		38.92	22.86	0.00	0.000	0.000
6/30/1990	19.04	14.51	0.76		39.49	23.30	0.00	0.000	0.000
7/31/1990	19.49	14.75	0.76		40.09	23.75	0.00	0.000	0.000
8/31/1990	19.58	14.13	0.72		40.70	24.19	0.00	0.000	0.000
9/30/1990	18.75	14.00	0.75		41.26	24.61	0.00	0.000	0.000
10/31/1990	17.17	14.71	0.86		41.80	25.07	0.00	0.000	0.000
11/30/1990	17.34	14.22	0.82		42.32	25.50	0.00	0.000	0.000
12/31/1990	16.29	14.16	0.87		42.82	25.93	0.00	0.000	0.000
1/31/1991	18.50	14.13	0.76		43.39	26.37	0.00	0.000	0.000
2/28/1991	19.06	13.76	0.72		43.93	26.76	0.00	0.000	0.000
3/31/1991	18.32	13.91	0.76		44.50	27.19	0.00	0.000	0.000
4/30/1991	16.86	14.48	0.86		45.00	27.62	0.00	0.000	0.000
5/31/1991	18.03	13.50	0.75		45.56	28.04	0.00	0.000	0.000
6/30/1991	16.61	13.86	0.83		46.06	28.46	0.00	0.000	0.000
7/31/1991	16.41	13.99	0.85		46.57	28.89	0.00	0.000	0.000
8/31/1991	16.28	13.82	0.85		47.07	29.32	0.00	0.000	0.000
9/30/1991	16.76	13.56	0.81		47.57	29.73	0.00	0.000	0.000
10/31/1991	15.25	13.75	0.90		48.05	30.15	0.00	0.000	0.000
11/30/1991	16.37	12.84	0.78		48.54	30.54	0.00	0.000	0.000
12/31/1991	14.23	13.67	0.96		48.98	30.96	0.00	0.000	0.000
1/31/1992	15.15	12.82	0.85		49.45	31.36	0.00	0.000	0.000
2/29/1992	15.42	13.47	0.87		49.90	31.75	0.00	0.000	0.000
3/31/1992	12.94	12.47	0.96		50.30	32.14	0.00	0.000	0.000
4/30/1992	12.65	11.00	0.87		50.68	32.47	0.00	0.000	0.000
5/31/1992	13.54	12.34	0.91		51.10	32.85	0.00	0.000	0.000
6/30/1992	18.62	10.78	0.58		51.66	33.17	0.00	0.000	0.000
7/31/1992	17.64	14.01	0.79		52.20	33.61	0.00	0.000	0.000
8/31/1992	18.00	15.43	0.86		52.76	34.09	0.00	0.000	0.000
9/30/1992	18.14	11.39	0.63		53.30	34.43	0.00	0.000	0.000
10/31/1992	16.53	14.69	0.89		53.82	34.88	0.00	0.000	0.000
11/30/1992	17.02	10.69	0.63		54.33	35.20	0.00	0.000	0.000
12/31/1992	15.75	10.22	0.65		54.81	35.52	0.00	0.000	0.000
1/31/1993	18.05	11.09	0.61		55.37	35.86	0.00	0.000	0.000
2/28/1993	19.20	16.50	0.86		55.91	36.33	0.00	0.000	0.000
3/31/1993	18.88	33.05	1.75		56.50	37.35	0.00	0.000	0.000
4/30/1993	17.59	12.36	0.70		57.03	37.72	0.00	0.000	0.000
5/31/1993	17.98	11.50	0.64		57.58	38.08	0.00	0.000	0.000
6/30/1993	17.78	12.30	0.69		58.12	38.45	0.00	0.000	0.000
7/31/1993	18.17	10.68	0.59		58.68	38.78	0.00	0.000	0.000
8/31/1993	16.74	11.66	0.70		59.20	39.14	0.00	0.000	0.000
9/30/1993	15.81	11.37	0.72		59.67	39.48	0.00	0.000	0.000

Date	Oil Rate (CD) m3/d	Water Rate (CD) m3/d	Water Oil Ratio m3/m3	Water Inj Rate (CD) m3/d	Cum Oil Prod Km3	Cum Water Prod Km3	Cum Water Inj Km3	Voidage Replacement Ratio	Cum Voidage Replacement Ratio
10/31/1993	14.35	17.58	1.23	15.74	60.12	40.03	0.49	0.724	0.008
11/30/1993	14.62	20.77	1.42	20.52	60.56	40.65	1.10	0.821	0.019
12/31/1993	16.24	19.95	1.23	19.78	61.06	41.27	1.72	0.802	0.029
1/31/1994	14.64	20.75	1.42	20.28	61.51	41.91	2.35	0.811	0.039
2/28/1994	16.05	20.71	1.29	20.69	61.96	42.49	2.92	0.816	0.048
3/31/1994	15.66	20.60	1.32	20.01	62.45	43.13	3.54	0.796	0.058
4/30/1994	15.57	20.99	1.35	20.41	62.92	43.76	4.16	0.801	0.067
5/31/1994	17.11	26.43	1.54	20.14	63.45	44.58	4.78	0.642	0.076
6/30/1994	16.47	29.15	1.77	19.96	63.94	45.45	5.38	0.588	0.084
7/31/1994	18.85	40.40	2.14	19.35	64.52	46.70	5.98	0.422	0.091
8/31/1994	22.91	45.93	2.00	19.73	65.23	48.13	6.59	0.375	0.098
9/30/1994	19.51	44.83	2.30	19.30	65.82	49.47	7.17	0.382	0.105
10/31/1994	21.44	44.43	2.07	18.99	66.48	50.85	7.76	0.375	0.111
11/30/1994	21.56	49.37	2.29	29.70	67.13	52.33	8.65	0.534	0.121
12/31/1994	21.12	60.15	2.85	54.47	67.79	54.20	10.34	0.822	0.140
1/31/1995	21.29	63.35	2.98	57.21	68.45	56.16	12.11	0.823	0.159
2/28/1995	21.25	62.16	2.93	59.28	69.04	57.90	13.77	0.868	0.177
3/31/1995	20.40	51.74	2.54	51.54	69.67	59.50	15.37	0.894	0.193
4/30/1995	20.08	55.00	2.74	54.77	70.28	61.15	17.01	0.901	0.209
5/31/1995	18.42	54.40	2.95	54.37	70.85	62.84	18.70	0.910	0.224
6/30/1995	19.48	55.93	2.87	58.08	71.43	64.52	20.44	0.944	0.240
7/31/1995	19.32	55.52	2.87	57.00	72.03	66.24	22.21	0.933	0.255
8/31/1995	19.52	54.40	2.79	101.36	72.64	67.93	25.35	1.688	0.285
9/30/1995	18.02	53.88	2.99	55.49	73.18	69.54	27.01	0.939	0.298
10/31/1995	16.70	45.17	2.70	50.05	73.69	70.94	28.57	1.001	0.310
11/30/1995	17.24	50.86	2.95	57.74	74.21	72.47	30.30	1.034	0.323
12/31/1995	17.13	50.27	2.94	57.16	74.74	74.03	32.07	1.035	0.335
1/31/1996	16.76	52.77	3.15	56.99	75.26	75.66	33.84	0.989	0.347
2/29/1996	16.86	44.40	2.63	48.03	75.75	76.95	35.23	0.975	0.356
3/31/1996	17.10	51.28	3.00	57.01	76.28	78.54	37.00	1.014	0.368
4/30/1996	17.18	50.64	2.95	56.24	76.80	80.06	38.68	1.011	0.378
5/31/1996	17.65	44.71	2.53	52.79	77.34	81.45	40.32	1.060	0.388
6/30/1996	17.85	48.68	2.73	56.92	77.88	82.91	42.03	1.057	0.399
7/31/1996	16.28	48.11	2.95	57.71	78.38	84.40	43.82	1.093	0.409
8/31/1996	17.81	46.75	2.63	56.29	78.94	85.85	45.56	1.084	0.419
9/30/1996	18.98	46.59	2.45	60.03	79.50	87.24	47.36	1.153	0.430
10/31/1996	16.56	45.44	2.74	63.53	80.02	88.65	49.33	1.265	0.441
11/30/1996	15.37	44.04	2.86	63.95	80.48	89.97	51.25	1.319	0.453
12/31/1996	17.85	48.63	2.73	68.47	81.03	91.48	53.37	1.273	0.464
1/31/1997	16.47	45.67	2.77	66.65	81.54	92.90	55.44	1.321	0.476
2/28/1997	15.79	45.53	2.88	47.70	81.99	94.17	56.78	0.952	0.482
3/31/1997	14.90	48.85	3.28	45.21	82.45	95.69	58.18	0.850	0.487
4/30/1997	15.75	50.04	3.18	39.03	82.92	97.19	59.35	0.715	0.490
5/31/1997	15.40	50.68	3.29	39.33	83.40	98.76	60.57	0.713	0.493
6/30/1997	13.50	39.27	2.91	39.22	83.80	99.94	61.74	0.908	0.497
7/31/1997	12.37	47.15	3.81	37.75	84.19	101.40	62.91	0.744	0.500
8/31/1997	12.33	49.43	4.01	39.14	84.57	102.93	64.13	0.739	0.503
9/30/1997	13.30	49.11	3.69	39.53	84.97	104.40	65.31	0.747	0.506

Date	Oil Rate (CD) m3/d	Water Rate (CD) m3/d	Water Oil Ratio m3/m3	Water Inj Rate (CD) m3/d	Cum Oil Prod Km3	Cum Water Prod Km3	Cum Water Inj Km3	Voidage Replacement Ratio	Cum Voidage Replacement Ratio
10/31/1997	12.76	47.39	3.71	40.73	85.36	105.87	66.58	0.797	0.510
11/30/1997	12.59	48.49	3.85	41.05	85.74	107.33	67.81	0.787	0.513
12/31/1997	12.30	50.01	4.07	41.57	86.12	108.88	69.10	0.776	0.516
1/31/1998	12.10	47.36	3.91	40.70	86.50	110.35	70.36	0.800	0.520
2/28/1998	10.89	44.26	4.07	44.39	86.80	111.59	71.60	0.936	0.524
3/31/1998	10.25	44.64	4.35	44.71	87.12	112.97	72.99	0.939	0.528
4/30/1998	9.85	46.07	4.68	37.67	87.41	114.35	74.12	0.770	0.531
5/31/1998	8.95	46.06	5.15	38.58	87.69	115.78	75.31	0.793	0.534
6/30/1998	8.44	42.88	5.08	35.52	87.95	117.07	76.38	0.784	0.536
7/31/1998	8.68	47.36	5.45	39.05	88.21	118.53	77.59	0.783	0.539
8/31/1998	7.72	43.50	5.64	35.53	88.45	119.88	78.69	0.777	0.541
9/30/1998	7.37	39.00	5.29	34.75	88.67	121.05	79.73	0.845	0.544
10/31/1998	8.16	41.76	5.12	37.26	88.93	122.35	80.89	0.845	0.546
11/30/1998	9.83	41.89	4.26	39.75	89.22	123.60	82.08	0.889	0.549
12/31/1998	8.86	43.37	4.90	34.79	89.50	124.95	83.16	0.757	0.551
1/31/1999	8.53	42.14	4.94	35.14	89.76	126.25	84.25	0.788	0.553
2/28/1999	8.12	46.14	5.68	35.17	89.99	127.55	85.23	0.725	0.555
3/31/1999	8.77	45.17	5.15	35.83	90.26	128.95	86.34	0.751	0.557
4/30/1999	8.04	43.41	5.40	33.84	90.50	130.25	87.36	0.740	0.558
5/31/1999	8.05	40.97	5.09	33.49	90.75	131.52	88.40	0.773	0.560
6/30/1999	6.86	42.05	6.13	37.88	90.96	132.78	89.53	0.860	0.563
7/31/1999	6.37	42.80	6.72	34.93	91.16	134.11	90.62	0.782	0.565
8/31/1999	6.67	41.29	6.19	33.28	91.36	135.39	91.65	0.770	0.566
9/30/1999	6.85	42.30	6.18	25.00	91.57	136.66	92.40	0.565	0.566
10/31/1999	6.78	41.71	6.15	39.92	91.78	137.95	93.64	0.914	0.569
11/30/1999	6.72	42.85	6.37	35.00	91.98	139.24	94.69	0.781	0.571
12/31/1999	6.44	41.96	6.52	36.93	92.18	140.54	95.83	0.843	0.573
1/31/2000	6.69	44.78	6.70	40.41	92.39	141.92	97.08	0.865	0.576
2/29/2000	6.35	43.65	6.88	36.73	92.57	143.19	98.15	0.808	0.577
3/31/2000	6.12	43.64	7.13	36.92	92.76	144.54	99.29	0.813	0.579
4/30/2000	6.34	42.81	6.76	36.84	92.95	145.83	100.40	0.825	0.581
5/31/2000	6.38	44.52	6.98	37.27	93.15	147.21	101.55	0.804	0.583
6/30/2000	5.71	43.44	7.60	36.29	93.32	148.51	102.64	0.805	0.585
7/31/2000	5.84	43.26	7.41	37.86	93.50	149.85	103.82	0.842	0.587
8/31/2000	5.85	42.74	7.30	36.77	93.68	151.18	104.96	0.828	0.589
9/30/2000	5.36	42.92	8.01	35.96	93.84	152.46	106.03	0.809	0.590
10/31/2000	5.38	41.54	7.72	35.66	94.01	153.75	107.14	0.828	0.592
11/30/2000	5.36	41.77	7.79	35.93	94.17	155.00	108.22	0.830	0.594
12/31/2000	5.33	41.29	7.74	35.75	94.34	156.28	109.33	0.835	0.596
1/31/2001	5.51	40.25	7.31	35.33	94.51	157.53	110.42	0.844	0.597
2/28/2001	5.28	39.53	7.48	34.61	94.65	158.64	111.39	0.843	0.599
3/31/2001	5.17	38.75	7.50	33.28	94.81	159.84	112.42	0.827	0.600
4/30/2001	4.81	39.88	8.29	33.16	94.96	161.04	113.42	0.803	0.602
5/31/2001	5.07	38.70	7.63	33.46	95.12	162.24	114.45	0.833	0.603
6/30/2001	5.28	38.72	7.33	32.97	95.27	163.40	115.44	0.819	0.605
7/31/2001	4.93	36.93	7.49	29.98	95.43	164.54	116.37	0.782	0.606
8/31/2001	5.16	34.17	6.62	29.50	95.59	165.60	117.29	0.827	0.607
9/30/2001	5.00	29.79	5.95	23.44	95.74	166.50	117.99	0.751	0.608

Date	Oil Rate (CD) m3/d	Water Rate (CD) m3/d	Water Oil Ratio m3/m3	Water Inj Rate (CD) m3/d	Cum Oil Prod Km3	Cum Water Prod Km3	Cum Water Inj Km3	Voidage Replacement Ratio	Cum Voidage Replacement Ratio
10/31/2001	5.01	29.98	5.99	24.03	95.89	167.43	118.74	0.764	0.608
11/30/2001	5.25	24.46	4.66	19.69	96.05	168.16	119.33	0.758	0.609
12/31/2001	5.01	26.54	5.30	20.54	96.21	168.98	119.96	0.734	0.610
1/31/2002	5.04	25.77	5.11	19.88	96.36	169.78	120.58	0.730	0.610
2/28/2002	4.87	25.70	5.28	21.14	96.50	170.50	121.17	0.780	0.611
3/31/2002	5.00	26.31	5.26	20.23	96.65	171.32	121.80	0.729	0.611
4/30/2002	4.91	26.51	5.40	19.96	96.80	172.11	122.40	0.715	0.612
5/31/2002	4.96	26.88	5.42	20.53	96.95	172.95	123.03	0.725	0.612
6/30/2002	4.91	26.57	5.41	21.39	97.10	173.74	123.68	0.764	0.613
7/31/2002	4.48	26.85	5.99	21.22	97.24	174.57	124.33	0.754	0.613
8/31/2002	4.58	40.56	8.85	33.37	97.38	175.83	125.37	0.797	0.615
9/30/2002	4.44	47.87	10.77	44.20	97.52	177.27	126.69	0.899	0.617
10/31/2002	6.54	67.47	10.31	57.24	97.72	179.36	128.47	0.825	0.619
11/30/2002	6.35	69.49	10.94	61.59	97.91	181.44	130.32	0.863	0.621
12/31/2002	6.48	63.95	9.86	57.18	98.11	183.43	132.09	0.869	0.624
1/31/2003	6.28	61.80	9.85	56.12	98.30	185.34	133.83	0.882	0.626
2/28/2003	6.14	61.02	9.94	57.72	98.48	187.05	135.44	0.919	0.628
3/31/2003	4.86	64.36	13.24	62.09	98.63	189.05	137.37	0.944	0.631
4/30/2003	5.81	72.77	12.52	69.40	98.80	191.23	139.45	0.932	0.634
5/31/2003	5.90	73.99	12.55	68.72	98.98	193.52	141.58	0.908	0.637
6/30/2003	5.59	72.42	12.95	68.79	99.15	195.70	143.65	0.929	0.640
7/31/2003	5.58	69.61	12.47	68.06	99.33	197.85	145.76	0.956	0.643
8/31/2003	5.86	71.06	12.12	68.28	99.51	200.06	147.87	0.938	0.646
9/30/2003	6.04	74.27	12.29	69.25	99.69	202.28	149.95	0.911	0.649
10/31/2003	6.02	75.79	12.58	70.47	99.88	204.63	152.13	0.909	0.651
11/30/2003	6.37	75.63	11.87	72.12	100.07	206.90	154.30	0.931	0.654
12/31/2003	6.15	79.09	12.85	75.25	100.26	209.35	156.63	0.930	0.657
1/31/2004	5.86	77.83	13.28	75.89	100.44	211.77	158.98	0.954	0.660
2/29/2004	5.83	76.17	13.06	71.77	100.61	213.98	161.06	0.922	0.663
3/31/2004	6.22	79.62	12.81	74.28	100.80	216.44	163.37	0.912	0.665
4/30/2004	5.96	78.51	13.17	73.12	100.98	218.80	165.56	0.911	0.668
5/31/2004	5.62	76.76	13.67	73.05	101.15	221.18	167.83	0.932	0.670
6/30/2004	5.80	69.95	12.06	69.36	101.33	223.28	169.91	0.968	0.673
7/31/2004	5.64	67.73	12.00	65.66	101.50	225.38	171.94	0.947	0.675
8/31/2004	5.03	63.88	12.71	66.04	101.66	227.36	173.99	1.011	0.678
9/30/2004	4.51	53.99	11.98	63.85	101.79	228.98	175.90	1.155	0.681
10/31/2004	4.24	51.97	12.26	59.25	101.92	230.59	177.74	1.114	0.683
11/30/2004	4.41	61.20	13.89	59.54	102.06	232.42	179.53	0.953	0.685
12/31/2004	4.31	58.92	13.68	57.83	102.19	234.25	181.32	0.961	0.687
1/31/2005	4.71	72.47	15.40	69.06	102.34	236.50	183.46	0.935	0.689
2/28/2005	4.66	69.81	14.99	65.89	102.47	238.45	185.31	0.926	0.691
3/31/2005	4.06	61.39	15.12	58.02	102.59	240.36	187.10	0.927	0.693
4/30/2005	3.97	60.85	15.33	56.91	102.71	242.18	188.81	0.918	0.694
5/31/2005	3.84	56.58	14.75	57.35	102.83	243.93	190.59	0.994	0.696
6/30/2005	3.97	63.14	15.91	60.16	102.95	245.83	192.39	0.936	0.698
7/31/2005	4.46	66.75	14.95	60.90	103.09	247.90	194.28	0.895	0.700
8/31/2005	5.51	67.63	12.27	62.04	103.26	250.00	196.21	0.896	0.701
9/30/2005	5.61	67.05	11.95	62.26	103.43	252.01	198.07	0.907	0.703

Date	Oil Rate (CD) m3/d	Water Rate (CD) m3/d	Water Oil Ratio m3/m3	Water Inj Rate (CD) m3/d	Cum Oil Prod Km3	Cum Water Prod Km3	Cum Water Inj Km3	Voidage Replacement Ratio	Cum Voidage Replacement Ratio
10/31/2005	5.50	67.00	12.18	63.54	103.60	254.08	200.04	0.926	0.704
11/30/2005	5.45	65.68	12.06	60.58	103.76	256.05	201.86	0.901	0.706
12/31/2005	5.04	64.18	12.73	59.53	103.92	258.04	203.71	0.907	0.707
1/31/2006	5.07	63.69	12.57	59.90	104.07	260.02	205.56	0.919	0.709
2/28/2006	5.71	62.10	10.87	58.01	104.23	261.76	207.19	0.910	0.710
3/31/2006	5.40	61.92	11.46	58.01	104.40	263.68	208.99	0.914	0.711
4/30/2006	5.33	53.51	10.03	58.30	104.56	265.28	210.73	1.059	0.713
5/31/2006	5.04	59.07	11.72	57.24	104.72	267.11	212.51	0.946	0.715
6/30/2006	5.13	61.45	11.99	54.25	104.87	268.96	214.14	0.862	0.715
7/31/2006	5.11	60.94	11.93	57.35	105.03	270.85	215.91	0.919	0.717
8/31/2006	4.71	61.78	13.11	56.77	105.18	272.76	217.67	0.899	0.718
9/30/2006	5.03	59.86	11.90	57.30	105.33	274.56	219.39	0.935	0.719
10/31/2006	4.33	48.53	11.21	44.80	105.46	276.06	220.78	0.900	0.720
11/30/2006	4.35	48.56	11.15	44.82	105.59	277.52	222.13	0.900	0.721
12/31/2006	3.95	44.96	11.37	41.36	105.71	278.91	223.41	0.897	0.722
1/31/2007	4.37	59.27	13.56	54.72	105.85	280.75	225.10	0.904	0.723
2/28/2007	4.99	62.56	12.53	57.66	105.99	282.50	226.72	0.901	0.724
3/31/2007	4.82	60.87	12.62	56.07	106.14	284.39	228.46	0.901	0.725
4/30/2007	4.87	60.59	12.45	54.46	106.29	286.21	230.09	0.878	0.726
5/31/2007	4.86	60.28	12.39	54.00	106.44	288.07	231.77	0.875	0.727
6/30/2007	4.76	59.32	12.45	52.75	106.58	289.85	233.35	0.869	0.728
7/31/2007	4.72	59.05	12.52	52.28	106.73	291.68	234.97	0.865	0.728
8/31/2007	4.69	58.29	12.44	50.89	106.87	293.49	236.55	0.853	0.729
9/30/2007	4.60	57.95	12.60	51.11	107.01	295.23	238.08	0.862	0.730
10/31/2007	4.23	54.35	12.86	49.05	107.14	296.92	239.60	0.883	0.731
11/30/2007	4.26	55.32	12.99	51.19	107.27	298.57	241.14	0.905	0.732
12/31/2007	4.29	54.24	12.63	51.02	107.40	300.26	242.72	0.920	0.733
1/31/2008	4.29	53.78	12.54	50.44	107.53	301.92	244.28	0.917	0.734
2/29/2008	4.29	52.95	12.35	50.65	107.66	303.46	245.75	0.935	0.734
3/31/2008	4.26	53.22	12.48	49.37	107.79	305.11	247.28	0.907	0.735
4/30/2008	4.30	52.07	12.10	48.80	107.92	306.67	248.74	0.915	0.736
5/31/2008	4.25	49.93	11.73	47.23	108.05	308.22	250.21	0.923	0.737
6/30/2008	3.87	50.24	12.97	45.18	108.17	309.73	251.56	0.880	0.738
7/31/2008	3.93	53.87	13.71	50.57	108.29	311.40	253.13	0.919	0.739
8/31/2008	3.90	49.03	12.56	48.44	108.41	312.92	254.63	0.966	0.740
9/30/2008	4.51	50.27	11.16	49.90	108.55	314.42	256.13	0.967	0.741
10/31/2008	4.74	52.34	11.04	49.85	108.69	316.05	257.68	0.928	0.742
11/30/2008	4.67	51.66	11.07	53.06	108.83	317.60	259.27	1.001	0.743
12/31/2008	4.57	51.41	11.25	52.11	108.97	319.19	260.88	0.988	0.744
1/31/2009	4.43	50.91	11.49	49.20	109.11	320.77	262.41	0.943	0.745
2/28/2009	4.03	47.43	11.77	47.01	109.22	322.10	263.72	0.967	0.746
3/31/2009	4.53	51.72	11.41	51.71	109.36	323.70	265.33	0.975	0.747
4/30/2009	3.98	39.29	9.87	39.08	109.48	324.88	266.50	0.966	0.747
5/31/2009	3.88	39.24	10.10	36.91	109.60	326.09	267.64	0.914	0.748
6/30/2009	4.03	52.52	13.04	51.23	109.73	327.67	269.18	0.954	0.749
7/31/2009	3.61	53.28	14.76	52.82	109.84	329.32	270.82	0.972	0.750
8/31/2009	3.38	50.43	14.92	47.54	109.94	330.88	272.29	0.925	0.751
9/30/2009	3.21	49.40	15.37	49.42	110.04	332.37	273.77	0.982	0.752

Date	Oil Rate (CD) m3/d	Water Rate (CD) m3/d	Water Oil Ratio m3/m3	Water Inj Rate (CD) m3/d	Cum Oil Prod Km3	Cum Water Prod Km3	Cum Water Inj Km3	Voidage Replacement Ratio	Cum Voidage Replacement Ratio
10/31/2009	4.39	50.94	11.60	51.24	110.17	333.95	275.36	0.981	0.753
11/30/2009	3.97	49.64	12.51	47.87	110.29	335.44	276.80	0.943	0.754
12/31/2009	3.94	47.42	12.04	44.56	110.42	336.91	278.18	0.918	0.754
1/31/2010	3.87	48.09	12.43	48.00	110.54	338.40	279.67	0.975	0.755
2/28/2010	3.84	48.50	12.62	51.51	110.64	339.75	281.11	1.038	0.756
3/31/2010	4.11	49.03	11.93	50.40	110.77	341.27	282.67	1.004	0.757
4/30/2010	3.85	46.97	12.21	44.65	110.89	342.68	284.01	0.929	0.758
5/31/2010	3.80	45.47	11.97	45.82	111.00	344.09	285.43	0.984	0.759
6/30/2010	3.70	41.25	11.15	46.00	111.11	345.33	286.81	1.087	0.760
7/31/2010	3.88	42.38	10.93	44.47	111.24	346.64	288.19	1.022	0.761
8/31/2010	3.55	40.36	11.38	39.40	111.35	347.89	289.41	0.952	0.761
9/30/2010	3.79	44.03	11.61	51.13	111.46	349.22	290.95	1.133	0.763
10/31/2010	2.60	33.20	12.75	40.50	111.54	350.25	292.20	1.193	0.764
11/30/2010	3.67	45.27	12.32	51.68	111.65	351.60	293.75	1.115	0.765
12/31/2010	3.73	41.06	11.02	49.69	111.77	352.88	295.29	1.179	0.767

Pattern: 13-21-010-29 Set: Kola Unit #1

Oil Formation Vol. Factor : 1.05 m3/m3

Water Formation Vol Factor : 1.00 m3/m3

Water / Oil Ratio : 9.84 m3/m3

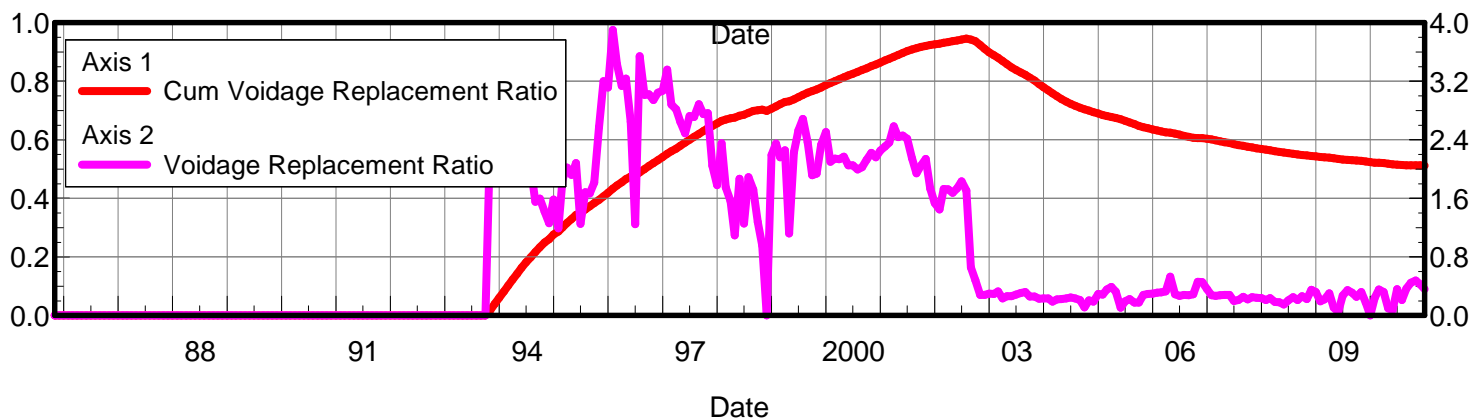
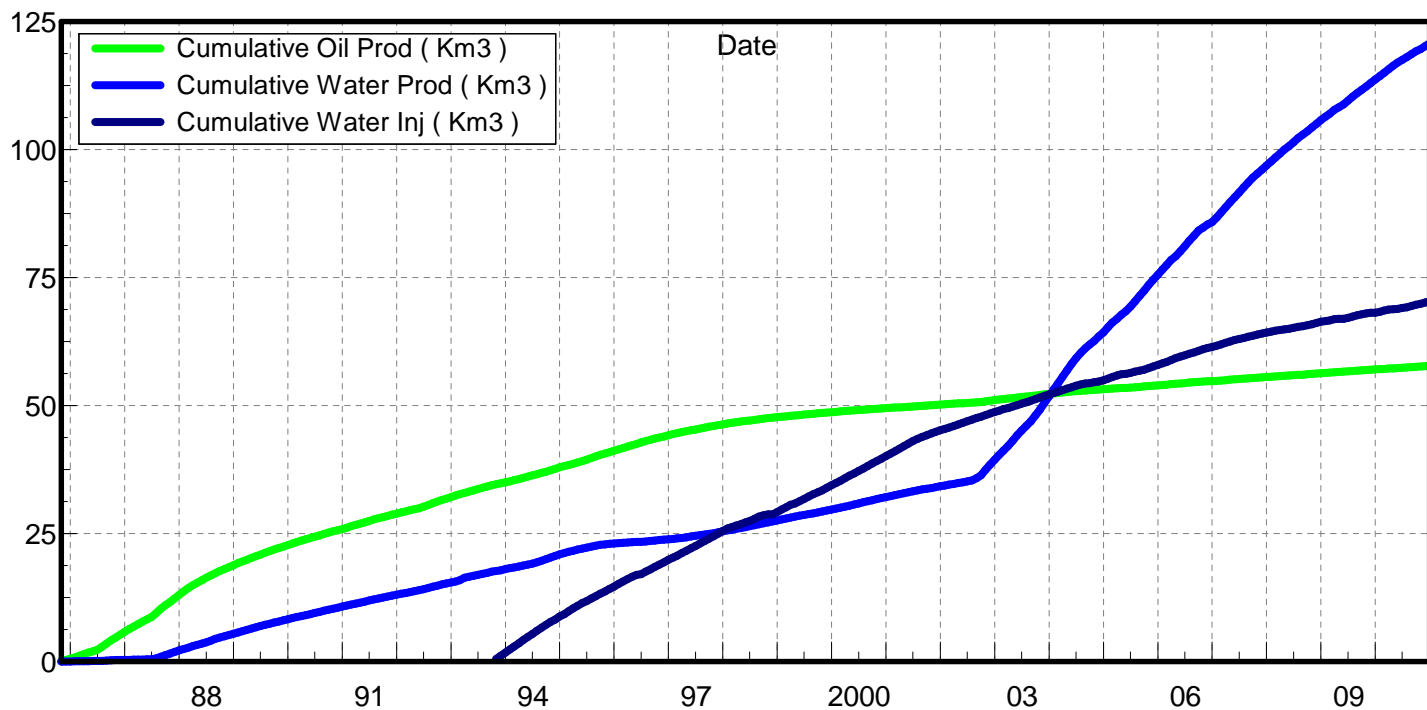
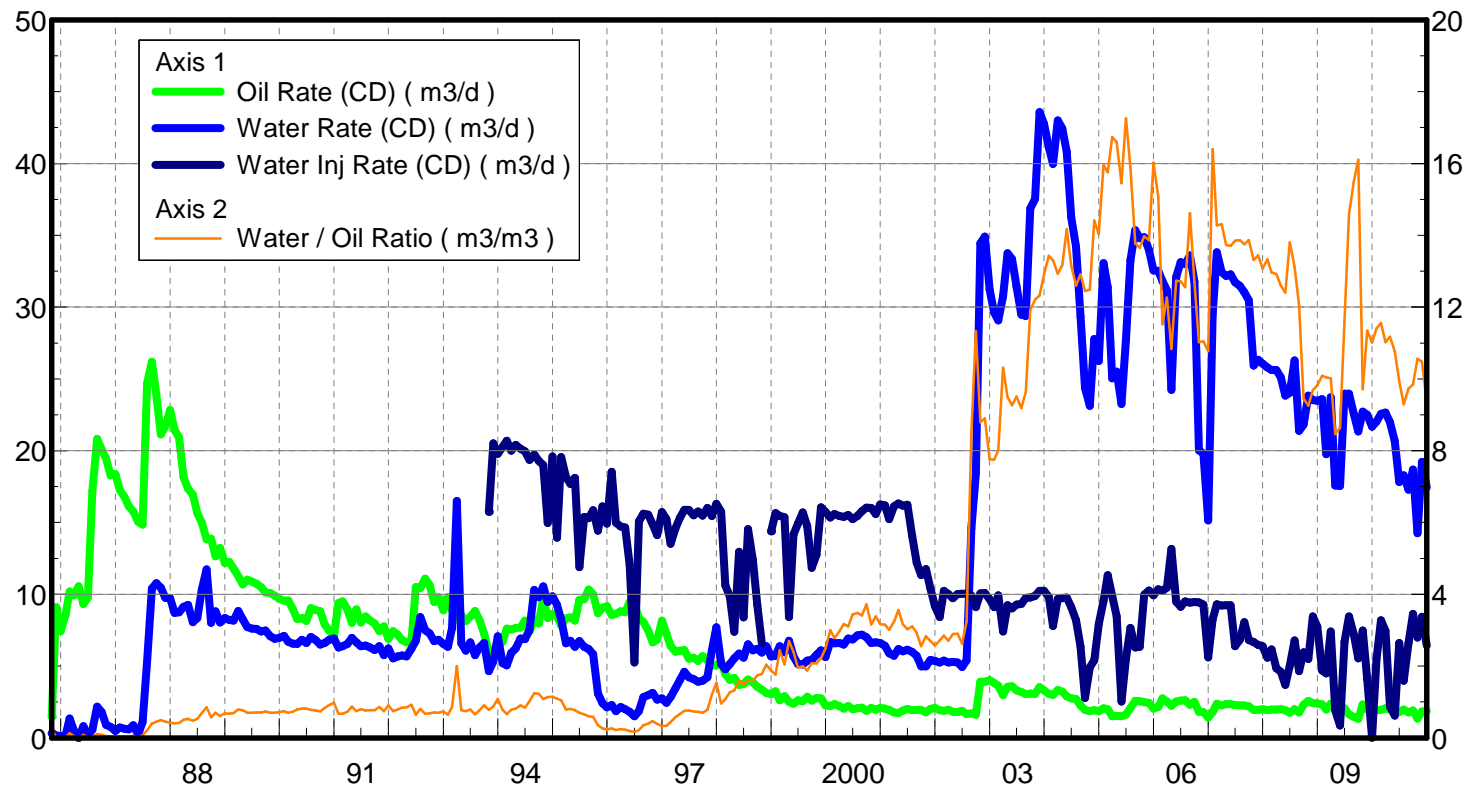
July 26, 2011

Operator: Tundra_Oil_and_Gas_Patnership

Oil Rate (CD) : 1.87 m3/d

Water Rate (CD) : 18.42 m3/d

Water Inj Rate (CD) : 8.07 m3/d



Date	Oil Rate (CD) m3/d	Water Rate (CD) m3/d	Water Oil Ratio m3/m3	Water Inj Rate (CD) m3/d	Cum Oil Prod Km3	Cum Water Prod Km3	Cum Water Inj Km3	Voidage Replacement Ratio	Cum Voidage Replacement Ratio
10/31/1985	1.49	0.32	0.22		0.05	0.01	0.00	0.000	0.000
11/30/1985	9.11	0.17	0.02		0.32	0.02	0.00	0.000	0.000
12/31/1985	7.43	0.12	0.02		0.55	0.02	0.00	0.000	0.000
1/31/1986	8.55	0.15	0.02		0.81	0.02	0.00	0.000	0.000
2/28/1986	10.19	1.34	0.13		1.10	0.06	0.00	0.000	0.000
3/31/1986	9.92	0.49	0.05		1.41	0.08	0.00	0.000	0.000
4/30/1986	10.56	0.00	0.00		1.72	0.08	0.00	0.000	0.000
5/31/1986	9.32	0.83	0.09		2.01	0.10	0.00	0.000	0.000
6/30/1986	9.77	0.18	0.02		2.31	0.11	0.00	0.000	0.000
7/31/1986	17.18	0.56	0.03		2.84	0.12	0.00	0.000	0.000
8/31/1986	20.82	2.18	0.10		3.48	0.19	0.00	0.000	0.000
9/30/1986	20.09	1.79	0.09		4.09	0.25	0.00	0.000	0.000
10/31/1986	19.45	0.90	0.05		4.69	0.27	0.00	0.000	0.000
11/30/1986	18.28	0.78	0.04		5.24	0.30	0.00	0.000	0.000
12/31/1986	18.38	0.48	0.03		5.81	0.31	0.00	0.000	0.000
1/31/1987	17.26	0.73	0.04		6.34	0.33	0.00	0.000	0.000
2/28/1987	16.79	0.63	0.04		6.81	0.35	0.00	0.000	0.000
3/31/1987	16.13	0.59	0.04		7.31	0.37	0.00	0.000	0.000
4/30/1987	15.77	0.89	0.06		7.79	0.40	0.00	0.000	0.000
5/31/1987	15.05	0.24	0.02		8.25	0.40	0.00	0.000	0.000
6/30/1987	14.86	1.11	0.07		8.70	0.44	0.00	0.000	0.000
7/31/1987	24.69	5.29	0.21		9.46	0.60	0.00	0.000	0.000
8/31/1987	26.20	10.40	0.40		10.28	0.92	0.00	0.000	0.000
9/30/1987	23.90	10.78	0.45		10.99	1.25	0.00	0.000	0.000
10/31/1987	21.15	10.46	0.49		11.65	1.57	0.00	0.000	0.000
11/30/1987	21.69	9.74	0.45		12.30	1.86	0.00	0.000	0.000
12/31/1987	22.83	9.73	0.43		13.01	2.17	0.00	0.000	0.000
1/31/1988	21.46	8.70	0.41		13.67	2.44	0.00	0.000	0.000
2/29/1988	20.92	8.75	0.42		14.28	2.69	0.00	0.000	0.000
3/31/1988	18.15	9.13	0.50		14.84	2.97	0.00	0.000	0.000
4/30/1988	17.34	9.27	0.53		15.36	3.25	0.00	0.000	0.000
5/31/1988	16.95	8.05	0.47		15.89	3.50	0.00	0.000	0.000
6/30/1988	15.66	8.35	0.53		16.36	3.75	0.00	0.000	0.000
7/31/1988	15.00	10.33	0.69		16.82	4.07	0.00	0.000	0.000
8/31/1988	13.84	11.75	0.85		17.25	4.43	0.00	0.000	0.000
9/30/1988	13.88	8.00	0.58		17.67	4.67	0.00	0.000	0.000
10/31/1988	12.65	8.81	0.70		18.06	4.95	0.00	0.000	0.000
11/30/1988	13.23	8.05	0.61		18.46	5.19	0.00	0.000	0.000
12/31/1988	12.19	8.35	0.69		18.84	5.45	0.00	0.000	0.000
1/31/1989	12.25	8.20	0.67		19.22	5.70	0.00	0.000	0.000
2/28/1989	11.81	8.18	0.69		19.55	5.93	0.00	0.000	0.000
3/31/1989	11.26	8.85	0.79		19.90	6.21	0.00	0.000	0.000
4/30/1989	10.70	8.26	0.77		20.22	6.45	0.00	0.000	0.000
5/31/1989	11.02	7.73	0.70		20.56	6.69	0.00	0.000	0.000
6/30/1989	10.89	7.62	0.70		20.88	6.92	0.00	0.000	0.000
7/31/1989	10.73	7.60	0.71		21.22	7.16	0.00	0.000	0.000
8/31/1989	10.51	7.42	0.71		21.54	7.39	0.00	0.000	0.000
9/30/1989	10.13	7.49	0.74		21.85	7.61	0.00	0.000	0.000

Date	Oil Rate (CD) m3/d	Water Rate (CD) m3/d	Water Oil Ratio m3/m3	Water Inj Rate (CD) m3/d	Cum Oil Prod Km3	Cum Water Prod Km3	Cum Water Inj Km3	Voidage Replacement Ratio	Cum Voidage Replacement Ratio
10/31/1989	10.08	7.09	0.70		22.16	7.83	0.00	0.000	0.000
11/30/1989	9.91	6.91	0.70		22.46	8.04	0.00	0.000	0.000
12/31/1989	9.68	6.96	0.72		22.76	8.25	0.00	0.000	0.000
1/31/1990	9.55	7.11	0.74		23.05	8.47	0.00	0.000	0.000
2/28/1990	9.56	6.69	0.70		23.32	8.66	0.00	0.000	0.000
3/31/1990	8.99	6.57	0.73		23.60	8.87	0.00	0.000	0.000
4/30/1990	8.28	6.54	0.79		23.85	9.06	0.00	0.000	0.000
5/31/1990	8.35	6.82	0.82		24.11	9.27	0.00	0.000	0.000
6/30/1990	8.14	6.61	0.81		24.35	9.47	0.00	0.000	0.000
7/31/1990	9.04	7.03	0.78		24.63	9.69	0.00	0.000	0.000
8/31/1990	8.90	6.80	0.76		24.91	9.90	0.00	0.000	0.000
9/30/1990	8.82	6.50	0.74		25.17	10.10	0.00	0.000	0.000
10/31/1990	7.91	6.60	0.84		25.42	10.30	0.00	0.000	0.000
11/30/1990	7.47	6.84	0.92		25.64	10.51	0.00	0.000	0.000
12/31/1990	7.10	6.93	0.98		25.86	10.72	0.00	0.000	0.000
1/31/1991	9.39	6.30	0.67		26.15	10.92	0.00	0.000	0.000
2/28/1991	9.50	6.39	0.67		26.42	11.09	0.00	0.000	0.000
3/31/1991	8.96	6.54	0.73		26.70	11.30	0.00	0.000	0.000
4/30/1991	8.01	6.96	0.87		26.94	11.51	0.00	0.000	0.000
5/31/1991	8.95	6.64	0.74		27.21	11.71	0.00	0.000	0.000
6/30/1991	8.05	6.39	0.79		27.45	11.90	0.00	0.000	0.000
7/31/1991	8.45	6.44	0.76		27.72	12.10	0.00	0.000	0.000
8/31/1991	8.18	6.29	0.77		27.97	12.30	0.00	0.000	0.000
9/30/1991	7.96	6.13	0.77		28.21	12.48	0.00	0.000	0.000
10/31/1991	7.43	6.38	0.86		28.44	12.68	0.00	0.000	0.000
11/30/1991	7.77	5.76	0.74		28.67	12.85	0.00	0.000	0.000
12/31/1991	6.90	6.22	0.90		28.89	13.05	0.00	0.000	0.000
1/31/1992	7.44	5.55	0.75		29.12	13.22	0.00	0.000	0.000
2/29/1992	7.19	5.66	0.79		29.32	13.38	0.00	0.000	0.000
3/31/1992	6.80	5.73	0.84		29.54	13.56	0.00	0.000	0.000
4/30/1992	6.65	5.67	0.85		29.74	13.73	0.00	0.000	0.000
5/31/1992	6.72	6.22	0.92		29.94	13.92	0.00	0.000	0.000
6/30/1992	10.51	6.76	0.64		30.26	14.12	0.00	0.000	0.000
7/31/1992	10.44	8.42	0.81		30.58	14.39	0.00	0.000	0.000
8/31/1992	11.08	7.50	0.68		30.93	14.62	0.00	0.000	0.000
9/30/1992	10.65	7.28	0.68		31.25	14.84	0.00	0.000	0.000
10/31/1992	9.45	6.74	0.71		31.54	15.05	0.00	0.000	0.000
11/30/1992	9.79	6.84	0.70		31.83	15.25	0.00	0.000	0.000
12/31/1992	8.87	6.54	0.74		32.11	15.45	0.00	0.000	0.000
1/31/1993	9.82	6.35	0.65		32.41	15.65	0.00	0.000	0.000
2/28/1993	8.88	7.64	0.86		32.66	15.86	0.00	0.000	0.000
3/31/1993	8.25	16.51	2.00		32.92	16.38	0.00	0.000	0.000
4/30/1993	8.54	6.58	0.77		33.17	16.57	0.00	0.000	0.000
5/31/1993	8.12	6.07	0.75		33.42	16.76	0.00	0.000	0.000
6/30/1993	8.44	6.66	0.79		33.68	16.96	0.00	0.000	0.000
7/31/1993	8.84	5.76	0.65		33.95	17.14	0.00	0.000	0.000
8/31/1993	8.19	6.30	0.77		34.21	17.33	0.00	0.000	0.000
9/30/1993	7.29	6.61	0.91		34.42	17.53	0.00	0.000	0.000

Date	Oil Rate (CD) m3/d	Water Rate (CD) m3/d	Water Oil Ratio m3/m3	Water Inj Rate (CD) m3/d	Cum Oil Prod Km3	Cum Water Prod Km3	Cum Water Inj Km3	Voidage Replacement Ratio	Cum Voidage Replacement Ratio
10/31/1993	5.95	4.65	0.78	15.74	34.61	17.68	0.49	2.445	0.017
11/30/1993	6.07	5.32	0.88	20.52	34.79	17.84	1.10	2.874	0.039
12/31/1993	6.56	7.09	1.08	19.78	34.99	18.06	1.72	2.186	0.060
1/31/1994	6.70	5.21	0.78	20.28	35.20	18.22	2.35	2.811	0.082
2/28/1994	7.61	5.05	0.66	20.69	35.42	18.36	2.92	2.824	0.101
3/31/1994	7.54	5.92	0.78	20.01	35.65	18.54	3.54	2.448	0.121
4/30/1994	7.65	6.24	0.82	20.41	35.88	18.73	4.16	2.395	0.141
5/31/1994	7.68	6.93	0.90	20.14	36.12	18.94	4.78	2.182	0.161
6/30/1994	8.17	6.88	0.84	19.96	36.36	19.15	5.38	2.141	0.179
7/31/1994	7.39	7.52	1.02	19.35	36.59	19.38	5.98	1.988	0.197
8/31/1994	8.27	10.31	1.25	19.73	36.85	19.70	6.59	1.543	0.215
9/30/1994	7.97	9.79	1.23	19.30	37.09	20.00	7.17	1.585	0.231
10/31/1994	9.78	10.56	1.08	18.99	37.39	20.32	7.76	1.408	0.246
11/30/1994	8.35	9.46	1.13	14.97	37.64	20.61	8.21	1.252	0.258
12/31/1994	8.64	9.87	1.14	19.60	37.91	20.91	8.82	1.574	0.273
1/31/1995	8.47	9.27	1.09	13.93	38.17	21.20	9.25	1.180	0.283
2/28/1995	7.84	8.23	1.05	19.55	38.39	21.43	9.80	1.849	0.298
3/31/1995	8.32	6.59	0.79	18.18	38.65	21.64	10.36	2.003	0.312
4/30/1995	8.39	6.78	0.81	17.68	38.90	21.84	10.89	1.904	0.325
5/31/1995	8.17	6.34	0.78	18.12	39.15	22.04	11.45	2.063	0.339
6/30/1995	9.62	6.74	0.70	11.89	39.44	22.24	11.81	1.237	0.347
7/31/1995	9.66	6.34	0.66	15.39	39.74	22.43	12.28	1.667	0.358
8/31/1995	10.33	6.19	0.60	15.31	40.06	22.63	12.76	1.649	0.369
9/30/1995	9.99	5.84	0.58	15.85	40.36	22.80	13.23	1.796	0.379
10/31/1995	8.68	3.09	0.36	14.42	40.63	22.90	13.68	2.538	0.390
11/30/1995	9.05	2.42	0.27	16.12	40.90	22.97	14.17	3.146	0.402
12/31/1995	9.16	2.14	0.23	14.91	41.18	23.04	14.63	3.055	0.414
1/31/1996	8.56	2.28	0.27	18.54	41.45	23.11	15.20	3.833	0.428
2/29/1996	8.63	1.87	0.22	15.00	41.70	23.16	15.64	3.366	0.439
3/31/1996	8.82	2.14	0.24	14.73	41.97	23.23	16.09	3.080	0.450
4/30/1996	8.76	1.99	0.23	14.65	42.24	23.29	16.53	3.175	0.460
5/31/1996	9.47	1.82	0.19	12.06	42.53	23.34	16.91	2.594	0.469
6/30/1996	9.34	1.51	0.16	5.25	42.81	23.39	17.06	1.222	0.471
7/31/1996	8.32	1.85	0.22	15.08	43.07	23.45	17.53	3.473	0.483
8/31/1996	8.08	2.84	0.35	15.61	43.32	23.53	18.02	2.968	0.494
9/30/1996	7.48	2.98	0.40	15.54	43.54	23.62	18.48	2.980	0.504
10/31/1996	6.65	3.13	0.47	14.89	43.75	23.72	18.94	2.906	0.515
11/30/1996	6.84	2.66	0.39	14.12	43.95	23.80	19.37	2.999	0.524
12/31/1996	8.17	2.76	0.34	15.73	44.21	23.89	19.86	3.021	0.535
1/31/1997	7.25	2.44	0.34	15.22	44.43	23.96	20.33	3.305	0.546
2/28/1997	6.42	2.84	0.44	13.52	44.61	24.04	20.71	2.842	0.554
3/31/1997	6.01	3.44	0.57	14.59	44.80	24.15	21.16	2.784	0.563
4/30/1997	6.08	4.03	0.66	15.32	44.98	24.27	21.62	2.619	0.573
5/31/1997	6.11	4.61	0.75	15.88	45.17	24.41	22.11	2.465	0.583
6/30/1997	5.53	4.22	0.76	15.88	45.34	24.54	22.59	2.701	0.593
7/31/1997	5.58	4.10	0.73	15.51	45.51	24.67	23.07	2.687	0.603
8/31/1997	5.36	3.91	0.73	15.78	45.67	24.79	23.56	2.860	0.613
9/30/1997	5.70	3.97	0.70	15.47	45.85	24.91	24.02	2.725	0.622

Date	Oil Rate (CD) m3/d	Water Rate (CD) m3/d	Water Oil Ratio m3/m3	Water Inj Rate (CD) m3/d	Cum Oil Prod Km3	Cum Water Prod Km3	Cum Water Inj Km3	Voidage Replacement Ratio	Cum Voidage Replacement Ratio
10/31/1997	5.40	4.22	0.78	16.01	46.01	25.04	24.52	2.740	0.632
11/30/1997	5.05	6.09	1.21	15.46	46.16	25.22	24.98	2.034	0.640
12/31/1997	5.04	7.70	1.53	16.30	46.32	25.46	25.49	1.769	0.648
1/31/1998	5.35	5.14	0.96	15.74	46.49	25.62	25.97	2.336	0.657
2/28/1998	4.45	4.78	1.07	10.63	46.61	25.75	26.27	1.737	0.662
3/31/1998	4.05	5.14	1.27	9.86	46.74	25.91	26.58	1.554	0.666
4/30/1998	4.18	5.53	1.32	7.38	46.86	26.08	26.80	1.088	0.668
5/31/1998	3.68	5.87	1.59	12.97	46.98	26.26	27.20	1.860	0.675
6/30/1998	3.76	5.59	1.49	8.39	47.09	26.43	27.45	1.249	0.678
7/31/1998	4.07	6.51	1.60	14.53	47.22	26.63	27.90	1.880	0.685
8/31/1998	3.86	6.10	1.58	12.40	47.33	26.82	28.29	1.710	0.690
9/30/1998	3.55	6.20	1.75	9.25	47.44	27.00	28.56	1.273	0.693
10/31/1998	3.35	5.95	1.78	6.60	47.55	27.19	28.77	0.950	0.695
11/30/1998	3.14	6.39	2.03		47.64	27.38	28.77	0.000	0.691
12/31/1998	3.03	5.68	1.87	14.38	47.73	27.56	29.21	2.181	0.698
1/31/1999	3.25	5.73	1.76	15.66	47.83	27.73	29.70	2.338	0.706
2/28/1999	2.63	6.40	2.44	15.46	47.91	27.91	30.13	2.153	0.713
3/31/1999	2.92	5.97	2.05	15.37	48.00	28.10	30.61	2.247	0.721
4/30/1999	2.51	6.77	2.70	8.42	48.07	28.30	30.86	1.119	0.723
5/31/1999	2.37	5.66	2.39	14.15	48.15	28.48	31.30	2.221	0.730
6/30/1999	2.63	5.14	1.96	14.92	48.23	28.63	31.75	2.516	0.737
7/31/1999	2.56	5.11	1.99	15.71	48.30	28.79	32.24	2.674	0.745
8/31/1999	2.87	5.39	1.88	14.74	48.39	28.96	32.69	2.357	0.753
9/30/1999	2.60	5.42	2.09	11.85	48.47	29.12	33.05	1.910	0.758
10/31/1999	2.79	5.77	2.07	12.75	48.56	29.30	33.44	1.930	0.763
11/30/1999	2.75	6.09	2.22	16.05	48.64	29.48	33.92	2.323	0.770
12/31/1999	2.26	5.63	2.49	15.75	48.71	29.66	34.41	2.497	0.778
1/31/2000	2.22	6.68	3.00	15.35	48.78	29.86	34.89	2.091	0.785
2/29/2000	2.36	6.58	2.79	15.58	48.85	30.05	35.34	2.138	0.791
3/31/2000	2.23	6.61	2.97	15.46	48.92	30.26	35.82	2.126	0.798
4/30/2000	2.05	6.50	3.17	15.39	48.98	30.45	36.28	2.161	0.804
5/31/2000	2.22	6.91	3.11	15.51	49.05	30.67	36.76	2.047	0.811
6/30/2000	1.99	6.85	3.44	15.23	49.11	30.87	37.22	2.046	0.817
7/31/2000	2.05	7.15	3.48	15.45	49.17	31.09	37.70	1.991	0.823
8/31/2000	2.11	7.19	3.41	15.78	49.24	31.32	38.19	2.019	0.829
9/30/2000	1.88	7.00	3.72	16.04	49.29	31.53	38.67	2.120	0.836
10/31/2000	2.09	6.60	3.16	16.01	49.36	31.73	39.17	2.214	0.842
11/30/2000	1.97	6.65	3.38	15.58	49.42	31.93	39.63	2.153	0.848
12/31/2000	2.09	6.62	3.17	16.26	49.48	32.14	40.14	2.245	0.855
1/31/2001	2.04	6.42	3.15	16.20	49.54	32.34	40.64	2.304	0.862
2/28/2001	1.95	5.89	3.01	15.24	49.60	32.50	41.07	2.355	0.867
3/31/2001	1.77	5.72	3.24	16.12	49.65	32.68	41.57	2.580	0.874
4/30/2001	1.74	6.20	3.56	16.32	49.71	32.86	42.05	2.431	0.881
5/31/2001	1.91	6.03	3.16	16.17	49.77	33.05	42.56	2.450	0.888
6/30/2001	2.03	6.14	3.03	16.23	49.83	33.23	43.04	2.406	0.894
7/31/2001	1.93	5.98	3.11	14.05	49.89	33.42	43.48	2.142	0.899
8/31/2001	1.95	5.72	2.93	12.21	49.95	33.60	43.86	1.938	0.903
9/30/2001	1.95	4.97	2.55	11.34	50.00	33.75	44.20	2.041	0.907

Date	Oil Rate (CD) m3/d	Water Rate (CD) m3/d	Water Oil Ratio m3/m3	Water Inj Rate (CD) m3/d	Cum Oil Prod Km3	Cum Water Prod Km3	Cum Water Inj Km3	Voidage Replacement Ratio	Cum Voidage Replacement Ratio
10/31/2001	1.76	4.99	2.83	11.76	50.06	33.90	44.56	2.133	0.912
11/30/2001	2.01	5.42	2.70	10.41	50.12	34.06	44.87	1.728	0.915
12/31/2001	2.08	5.37	2.58	9.18	50.18	34.23	45.16	1.532	0.917
1/31/2002	1.94	5.25	2.71	8.42	50.24	34.39	45.42	1.442	0.919
2/28/2002	1.89	5.38	2.85	10.24	50.30	34.54	45.71	1.721	0.922
3/31/2002	1.94	5.25	2.70	10.02	50.36	34.71	46.02	1.718	0.925
4/30/2002	1.83	5.28	2.89	9.73	50.41	34.87	46.31	1.669	0.927
5/31/2002	1.80	5.24	2.91	10.02	50.47	35.03	46.62	1.733	0.930
6/30/2002	1.88	4.94	2.63	10.04	50.52	35.18	46.92	1.826	0.933
7/31/2002	1.67	5.40	3.24	10.05	50.58	35.34	47.23	1.703	0.936
8/31/2002	1.71	14.62	8.53	9.90	50.63	35.80	47.54	0.654	0.933
9/30/2002	1.63	18.43	11.33	9.11	50.68	36.35	47.81	0.482	0.928
10/31/2002	3.92	34.45	8.80	10.05	50.80	37.42	48.12	0.282	0.915
11/30/2002	3.92	34.91	8.90	10.08	50.92	38.46	48.43	0.279	0.902
12/31/2002	4.02	31.20	7.76	9.65	51.04	39.43	48.73	0.298	0.891
1/31/2003	3.82	29.63	7.76	9.11	51.16	40.35	49.01	0.296	0.881
2/28/2003	3.63	29.07	8.01	9.92	51.26	41.16	49.29	0.329	0.872
3/31/2003	2.99	30.77	10.31	7.41	51.35	42.12	49.52	0.234	0.861
4/30/2003	3.56	33.76	9.49	9.24	51.46	43.13	49.79	0.265	0.851
5/31/2003	3.60	33.35	9.27	9.02	51.57	44.16	50.07	0.262	0.840
6/30/2003	3.31	31.43	9.50	9.29	51.67	45.11	50.35	0.287	0.831
7/31/2003	3.21	29.46	9.18	9.32	51.77	46.02	50.64	0.306	0.823
8/31/2003	3.05	29.39	9.63	9.75	51.87	46.93	50.94	0.322	0.816
9/30/2003	3.09	36.87	11.92	9.76	51.96	48.04	51.23	0.258	0.806
10/31/2003	3.07	37.54	12.21	9.89	52.05	49.20	51.54	0.257	0.796
11/30/2003	3.54	43.58	12.32	10.24	52.16	50.51	51.85	0.229	0.784
12/31/2003	3.31	42.75	12.91	10.25	52.26	51.83	52.17	0.234	0.773
1/31/2004	3.06	41.12	13.43	9.82	52.36	53.11	52.47	0.234	0.763
2/29/2004	3.00	39.96	13.31	7.79	52.44	54.27	52.70	0.191	0.753
3/31/2004	3.33	43.00	12.93	9.69	52.55	55.60	53.00	0.220	0.743
4/30/2004	3.22	42.44	13.17	9.74	52.64	56.87	53.29	0.224	0.734
5/31/2004	2.88	40.81	14.17	9.77	52.73	58.14	53.59	0.234	0.725
6/30/2004	2.75	36.24	13.15	9.10	52.82	59.23	53.86	0.246	0.718
7/31/2004	2.71	34.20	12.60	8.18	52.90	60.29	54.12	0.234	0.711
8/31/2004	2.27	29.37	12.91	6.37	52.97	61.20	54.32	0.212	0.705
9/30/2004	1.96	24.37	12.45	2.77	53.03	61.93	54.40	0.111	0.699
10/31/2004	1.85	23.11	12.48	4.92	53.09	62.64	54.55	0.208	0.695
11/30/2004	1.93	27.78	14.41	5.40	53.15	63.48	54.71	0.190	0.689
12/31/2004	1.87	26.24	14.04	7.92	53.20	64.29	54.96	0.295	0.685
1/31/2005	2.07	33.06	15.96	9.55	53.27	65.32	55.25	0.283	0.680
2/28/2005	1.99	31.39	15.75	11.34	53.32	66.20	55.57	0.354	0.676
3/31/2005	1.50	25.03	16.74	9.89	53.37	66.97	55.88	0.388	0.674
4/30/2005	1.54	25.50	16.60	8.45	53.42	67.74	56.13	0.325	0.670
5/31/2005	1.50	23.25	15.45	2.53	53.46	68.46	56.21	0.107	0.666
6/30/2005	1.61	27.74	17.26	5.52	53.51	69.29	56.38	0.196	0.661
7/31/2005	2.09	33.25	15.88	7.66	53.58	70.32	56.61	0.226	0.656
8/31/2005	2.57	35.36	13.78	6.29	53.65	71.42	56.81	0.174	0.649
9/30/2005	2.55	34.80	13.65	6.34	53.73	72.46	57.00	0.178	0.644

Date	Oil Rate (CD) m3/d	Water Rate (CD) m3/d	Water Oil Ratio m3/m3	Water Inj Rate (CD) m3/d	Cum Oil Prod Km3	Cum Water Prod Km3	Cum Water Inj Km3	Voidage Replacement Ratio	Cum Voidage Replacement Ratio
10/31/2005	2.50	34.86	13.97	9.98	53.81	73.54	57.31	0.280	0.639
11/30/2005	2.45	33.98	13.87	10.27	53.88	74.56	57.62	0.296	0.635
12/31/2005	2.03	32.56	16.02	9.94	53.95	75.57	57.92	0.300	0.632
1/31/2006	2.16	32.53	15.07	10.36	54.01	76.58	58.25	0.312	0.628
2/28/2006	2.76	31.82	11.53	10.25	54.09	77.47	58.53	0.314	0.625
3/31/2006	2.54	31.16	12.27	10.45	54.17	78.43	58.86	0.328	0.622
4/30/2006	2.24	24.25	10.84	13.17	54.24	79.16	59.25	0.528	0.621
5/31/2006	2.52	32.11	12.74	9.48	54.31	80.16	59.55	0.288	0.618
6/30/2006	2.61	33.14	12.71	9.13	54.39	81.15	59.82	0.269	0.614
7/31/2006	2.63	33.00	12.56	9.51	54.47	82.17	60.11	0.281	0.610
8/31/2006	2.30	33.59	14.61	9.42	54.54	83.22	60.41	0.275	0.607
9/30/2006	2.50	31.77	12.69	9.46	54.62	84.17	60.69	0.291	0.604
10/31/2006	1.82	20.02	11.02	9.44	54.68	84.79	60.98	0.459	0.603
11/30/2006	1.79	19.80	11.05	9.28	54.73	85.38	61.26	0.457	0.602
12/31/2006	1.41	15.15	10.77	5.61	54.77	85.85	61.43	0.360	0.601
1/31/2007	1.80	29.51	16.39	8.27	54.83	86.77	61.69	0.275	0.598
2/28/2007	2.37	33.81	14.28	9.31	54.90	87.71	61.95	0.270	0.595
3/31/2007	2.27	32.43	14.31	9.21	54.97	88.72	62.24	0.278	0.592
4/30/2007	2.34	32.18	13.73	9.24	55.04	89.69	62.51	0.281	0.589
5/31/2007	2.36	32.29	13.70	9.25	55.11	90.69	62.80	0.280	0.586
6/30/2007	2.29	31.73	13.85	6.39	55.18	91.64	62.99	0.197	0.582
7/31/2007	2.27	31.48	13.87	6.84	55.25	92.61	63.20	0.213	0.579
8/31/2007	2.26	31.04	13.75	8.07	55.32	93.58	63.45	0.254	0.576
9/30/2007	2.20	30.48	13.87	6.81	55.38	94.49	63.66	0.219	0.573
10/31/2007	1.95	25.93	13.32	6.68	55.44	95.29	63.87	0.252	0.571
11/30/2007	1.96	26.34	13.44	6.47	55.50	96.09	64.06	0.240	0.568
12/31/2007	1.99	26.06	13.07	6.38	55.56	96.89	64.26	0.239	0.566
1/31/2008	1.94	25.80	13.33	5.59	55.62	97.69	64.43	0.212	0.564
2/29/2008	1.98	25.62	12.97	6.17	55.68	98.44	64.61	0.235	0.561
3/31/2008	1.98	25.63	12.92	4.85	55.74	99.23	64.76	0.185	0.559
4/30/2008	1.99	25.11	12.61	4.61	55.80	99.98	64.90	0.179	0.556
5/31/2008	1.92	23.83	12.40	3.68	55.86	100.72	65.01	0.151	0.554
6/30/2008	1.74	24.04	13.80	5.03	55.92	101.44	65.16	0.205	0.551
7/31/2008	2.00	26.28	13.12	6.78	55.98	102.26	65.37	0.252	0.549
8/31/2008	1.77	21.38	12.05	4.65	56.03	102.92	65.52	0.212	0.547
9/30/2008	2.31	21.80	9.45	5.96	56.10	103.57	65.70	0.265	0.546
10/31/2008	2.58	23.84	9.25	5.49	56.18	104.31	65.87	0.223	0.544
11/30/2008	2.43	23.53	9.69	8.46	56.25	105.02	66.12	0.349	0.543
12/31/2008	2.39	23.47	9.82	7.75	56.33	105.75	66.36	0.321	0.541
1/31/2009	2.34	23.59	10.09	4.68	56.40	106.48	66.51	0.193	0.539
2/28/2009	1.97	19.77	10.04	4.50	56.46	107.03	66.63	0.221	0.538
3/31/2009	2.37	23.73	10.02	7.41	56.53	107.77	66.86	0.303	0.536
4/30/2009	2.08	17.57	8.46	1.91	56.59	108.29	66.92	0.105	0.534
5/31/2009	2.03	17.54	8.63	0.86	56.65	108.84	66.95	0.048	0.532
6/30/2009	2.06	23.97	11.62	6.69	56.72	109.56	67.15	0.272	0.531
7/31/2009	1.64	23.96	14.59	8.46	56.77	110.30	67.41	0.346	0.530
8/31/2009	1.46	22.57	15.50	7.21	56.81	111.00	67.63	0.313	0.528
9/30/2009	1.33	21.34	16.10	5.55	56.85	111.64	67.80	0.255	0.527

Date	Oil Rate (CD) m3/d	Water Rate (CD) m3/d	Water Oil Ratio m3/m3	Water Inj Rate (CD) m3/d	Cum Oil Prod Km3	Cum Water Prod Km3	Cum Water Inj Km3	Voidage Replacement Ratio	Cum Voidage Replacement Ratio
10/31/2009	2.34	22.71	9.71	7.47	56.92	112.34	68.03	0.319	0.526
11/30/2009	1.98	22.50	11.35	4.06	56.98	113.02	68.15	0.176	0.524
12/31/2009	1.97	21.67	11.01	0.01	57.05	113.69	68.15	0.000	0.521
1/31/2010	1.93	22.03	11.40	5.49	57.11	114.37	68.32	0.243	0.520
2/28/2010	1.95	22.56	11.56	8.19	57.16	115.01	68.55	0.354	0.519
3/31/2010	2.05	22.65	11.02	7.45	57.22	115.71	68.78	0.320	0.518
4/30/2010	1.97	21.98	11.18	2.17	57.28	116.37	68.85	0.096	0.516
5/31/2010	1.92	20.66	10.77	1.56	57.34	117.01	68.90	0.074	0.514
6/30/2010	1.79	17.81	9.93	6.60	57.40	117.54	69.10	0.360	0.513
7/31/2010	1.97	18.29	9.29	3.98	57.46	118.11	69.22	0.211	0.512
8/31/2010	1.78	17.29	9.73	6.60	57.51	118.65	69.42	0.370	0.511
9/30/2010	1.90	18.69	9.85	8.63	57.57	119.21	69.68	0.448	0.511
10/31/2010	1.35	14.25	10.56	6.99	57.61	119.65	69.90	0.477	0.511
11/30/2010	1.84	19.22	10.48	8.43	57.67	120.22	70.15	0.427	0.510
12/31/2010	1.86	17.43	9.35	6.44	57.72	120.77	70.35	0.358	0.510

Pattern: 2-28-010-29 Set: Kola Unit #1

Oil Formation Vol. Factor : 1.05 m3/m3

Water Formation Vol Factor : 1.00 m3/m3

Water / Oil Ratio : 16.40 m3/m3

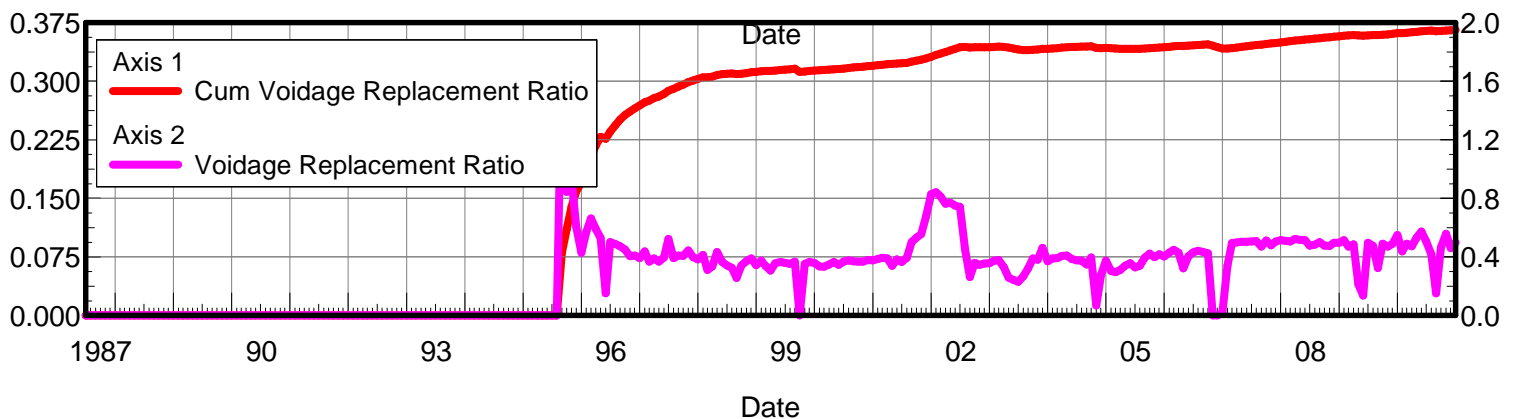
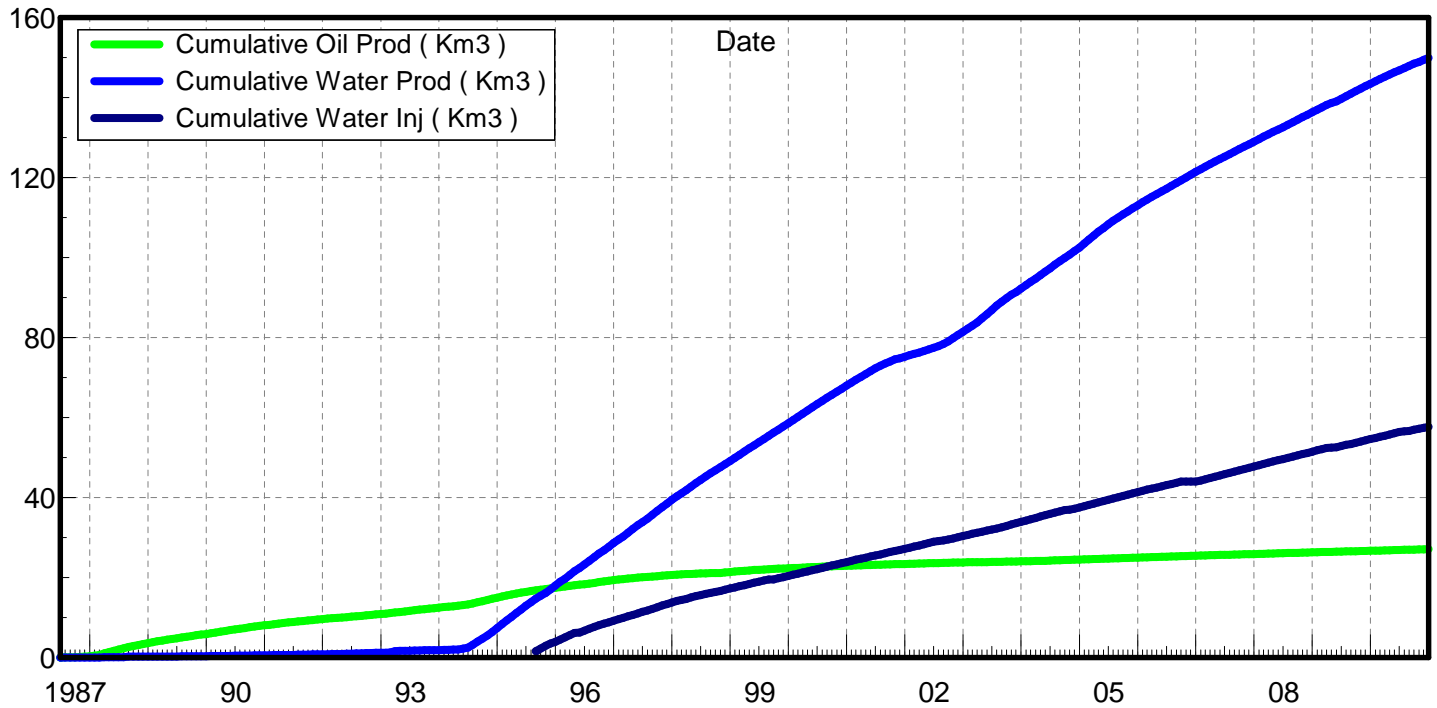
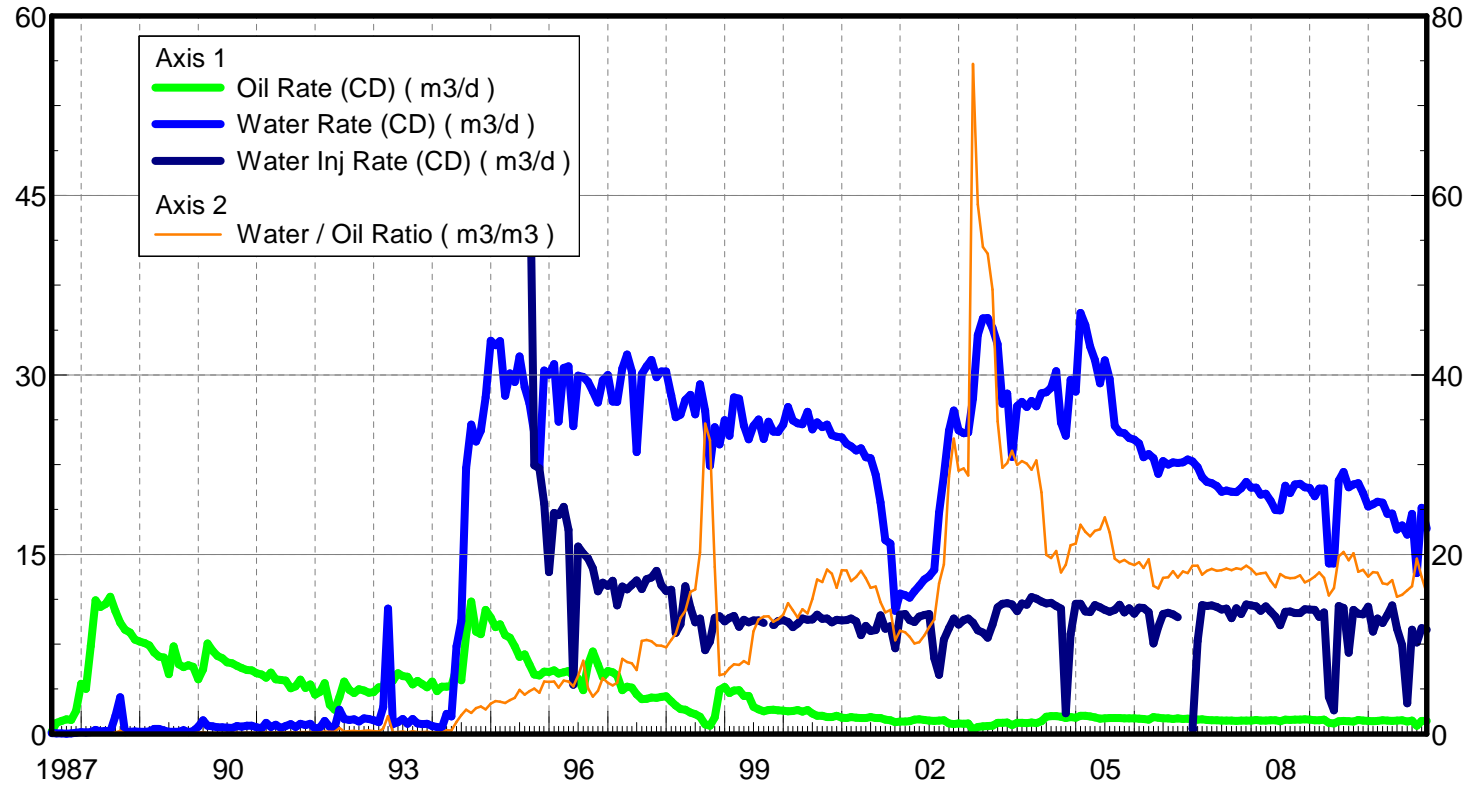
July 26, 2011

Operator: Tundra_Oil_and_Gas_Patnership

Oil Rate (CD) : 1.10 m3/d

Water Rate (CD) : 18.12 m3/d

Water Inj Rate (CD) : 7.11 m3/d



Date	Oil Rate (CD) m3/d	Water Rate (CD) m3/d	Water Oil Ratio m3/m3	Water Inj Rate (CD) m3/d	Cum Oil Prod Km3	Cum Water Prod Km3	Cum Water Inj Km3	Voidage Replacement Ratio	Cum Voidage Replacement Ratio
6/30/1987	0.21	0.07	0.33		0.01	0.00	0.00	0.000	0.000
7/31/1987	0.93	0.05	0.06		0.04	0.00	0.00	0.000	0.000
8/31/1987	1.08	0.03	0.03		0.07	0.00	0.00	0.000	0.000
9/30/1987	1.23	0.03	0.02		0.11	0.01	0.00	0.000	0.000
10/31/1987	1.16	0.05	0.05		0.14	0.01	0.00	0.000	0.000
11/30/1987	1.92	0.10	0.05		0.20	0.01	0.00	0.000	0.000
12/31/1987	4.19	0.14	0.03		0.33	0.01	0.00	0.000	0.000
1/31/1988	3.76	0.12	0.03		0.45	0.02	0.00	0.000	0.000
2/29/1988	7.35	0.14	0.02		0.66	0.02	0.00	0.000	0.000
3/31/1988	11.17	0.33	0.03		1.00	0.03	0.00	0.000	0.000
4/30/1988	10.61	0.21	0.02		1.32	0.04	0.00	0.000	0.000
5/31/1988	10.86	0.25	0.02		1.66	0.05	0.00	0.000	0.000
6/30/1988	11.45	0.17	0.01		2.00	0.05	0.00	0.000	0.000
7/31/1988	10.27	1.50	0.15		2.32	0.10	0.00	0.000	0.000
8/31/1988	9.31	3.06	0.33		2.61	0.19	0.00	0.000	0.000
9/30/1988	8.70	0.14	0.02		2.87	0.20	0.00	0.000	0.000
10/31/1988	8.46	0.17	0.02		3.13	0.20	0.00	0.000	0.000
11/30/1988	7.88	0.19	0.02		3.37	0.21	0.00	0.000	0.000
12/31/1988	7.72	0.17	0.02		3.61	0.21	0.00	0.000	0.000
1/31/1989	7.57	0.19	0.02		3.84	0.22	0.00	0.000	0.000
2/28/1989	7.39	0.19	0.03		4.05	0.22	0.00	0.000	0.000
3/31/1989	6.81	0.42	0.06		4.26	0.24	0.00	0.000	0.000
4/30/1989	6.46	0.41	0.06		4.46	0.25	0.00	0.000	0.000
5/31/1989	6.38	0.28	0.04		4.65	0.26	0.00	0.000	0.000
6/30/1989	4.99	0.17	0.03		4.80	0.26	0.00	0.000	0.000
7/31/1989	7.30	0.17	0.02		5.03	0.27	0.00	0.000	0.000
8/31/1989	5.81	0.17	0.03		5.21	0.27	0.00	0.000	0.000
9/30/1989	5.57	0.31	0.06		5.38	0.28	0.00	0.000	0.000
10/31/1989	5.75	0.16	0.03		5.55	0.29	0.00	0.000	0.000
11/30/1989	5.60	0.22	0.04		5.72	0.29	0.00	0.000	0.000
12/31/1989	4.55	0.60	0.13		5.86	0.31	0.00	0.000	0.000
1/31/1990	5.40	1.13	0.21		6.03	0.35	0.00	0.000	0.000
2/28/1990	7.56	0.68	0.09		6.24	0.37	0.00	0.000	0.000
3/31/1990	6.93	0.62	0.09		6.46	0.39	0.00	0.000	0.000
4/30/1990	6.52	0.55	0.08		6.65	0.40	0.00	0.000	0.000
5/31/1990	6.33	0.55	0.09		6.85	0.42	0.00	0.000	0.000
6/30/1990	5.98	0.53	0.09		7.03	0.44	0.00	0.000	0.000
7/31/1990	5.91	0.50	0.09		7.21	0.45	0.00	0.000	0.000
8/31/1990	5.68	0.65	0.12		7.39	0.47	0.00	0.000	0.000
9/30/1990	5.49	0.59	0.11		7.55	0.49	0.00	0.000	0.000
10/31/1990	5.33	0.68	0.13		7.72	0.51	0.00	0.000	0.000
11/30/1990	5.30	0.69	0.13		7.88	0.53	0.00	0.000	0.000
12/31/1990	5.08	0.54	0.11		8.04	0.55	0.00	0.000	0.000
1/31/1991	4.96	0.48	0.10		8.19	0.56	0.00	0.000	0.000
2/28/1991	4.70	0.92	0.20		8.32	0.59	0.00	0.000	0.000
3/31/1991	5.11	0.59	0.12		8.48	0.61	0.00	0.000	0.000
4/30/1991	4.55	0.78	0.17		8.62	0.63	0.00	0.000	0.000
5/31/1991	4.50	0.50	0.11		8.75	0.65	0.00	0.000	0.000

Date	Oil Rate (CD) m3/d	Water Rate (CD) m3/d	Water Oil Ratio m3/m3	Water Inj Rate (CD) m3/d	Cum Oil Prod Km3	Cum Water Prod Km3	Cum Water Inj Km3	Voidage Replacement Ratio	Cum Voidage Replacement Ratio
6/30/1991	4.46	0.66	0.15		8.89	0.67	0.00	0.000	0.000
7/31/1991	3.82	0.81	0.21		9.01	0.69	0.00	0.000	0.000
8/31/1991	3.97	0.57	0.14		9.13	0.71	0.00	0.000	0.000
9/30/1991	4.55	0.83	0.18		9.27	0.73	0.00	0.000	0.000
10/31/1991	3.84	0.72	0.19		9.39	0.76	0.00	0.000	0.000
11/30/1991	4.13	0.84	0.20		9.51	0.78	0.00	0.000	0.000
12/31/1991	3.29	0.45	0.14		9.61	0.80	0.00	0.000	0.000
1/31/1992	3.52	0.55	0.16		9.72	0.81	0.00	0.000	0.000
2/29/1992	4.23	1.08	0.26		9.84	0.84	0.00	0.000	0.000
3/31/1992	2.41	0.57	0.24		9.92	0.86	0.00	0.000	0.000
4/30/1992	2.03	0.51	0.25		9.98	0.88	0.00	0.000	0.000
5/31/1992	3.06	2.01	0.66		10.07	0.94	0.00	0.000	0.000
6/30/1992	4.37	1.26	0.29		10.20	0.98	0.00	0.000	0.000
7/31/1992	3.69	1.17	0.32		10.32	1.01	0.00	0.000	0.000
8/31/1992	3.42	1.21	0.35		10.43	1.05	0.00	0.000	0.000
9/30/1992	3.74	1.04	0.28		10.54	1.08	0.00	0.000	0.000
10/31/1992	3.63	1.30	0.36		10.65	1.12	0.00	0.000	0.000
11/30/1992	3.44	1.24	0.36		10.75	1.16	0.00	0.000	0.000
12/31/1992	3.49	1.13	0.32		10.86	1.19	0.00	0.000	0.000
1/31/1993	3.90	0.99	0.25		10.98	1.23	0.00	0.000	0.000
2/28/1993	3.89	2.23	0.57		11.09	1.29	0.00	0.000	0.000
3/31/1993	5.26	10.46	1.99		11.25	1.61	0.00	0.000	0.000
4/30/1993	4.43	0.83	0.19		11.39	1.64	0.00	0.000	0.000
5/31/1993	5.08	0.99	0.20		11.54	1.67	0.00	0.000	0.000
6/30/1993	4.82	1.25	0.26		11.69	1.71	0.00	0.000	0.000
7/31/1993	4.78	0.84	0.18		11.84	1.73	0.00	0.000	0.000
8/31/1993	4.14	1.25	0.30		11.97	1.77	0.00	0.000	0.000
9/30/1993	4.44	0.87	0.20		12.10	1.80	0.00	0.000	0.000
10/31/1993	4.17	0.80	0.19		12.23	1.82	0.00	0.000	0.000
11/30/1993	3.90	0.85	0.22		12.34	1.85	0.00	0.000	0.000
12/31/1993	4.38	0.65	0.15		12.48	1.87	0.00	0.000	0.000
1/31/1994	3.58	0.58	0.16		12.59	1.89	0.00	0.000	0.000
2/28/1994	3.96	0.50	0.13		12.70	1.90	0.00	0.000	0.000
3/31/1994	3.94	1.68	0.43		12.82	1.95	0.00	0.000	0.000
4/30/1994	3.99	1.46	0.36		12.94	1.99	0.00	0.000	0.000
5/31/1994	5.50	7.31	1.33		13.11	2.22	0.00	0.000	0.000
6/30/1994	4.48	9.43	2.10		13.25	2.50	0.00	0.000	0.000
7/31/1994	8.26	22.20	2.69		13.50	3.19	0.00	0.000	0.000
8/31/1994	11.05	25.85	2.34		13.85	3.99	0.00	0.000	0.000
9/30/1994	8.54	24.43	2.86		14.10	4.73	0.00	0.000	0.000
10/31/1994	8.32	25.33	3.04		14.36	5.51	0.00	0.000	0.000
11/30/1994	10.37	28.13	2.71		14.67	6.36	0.00	0.000	0.000
12/31/1994	9.71	32.84	3.38		14.97	7.37	0.00	0.000	0.000
1/31/1995	8.91	32.49	3.64		15.25	8.38	0.00	0.000	0.000
2/28/1995	9.16	32.83	3.59		15.51	9.30	0.00	0.000	0.000
3/31/1995	8.24	28.26	3.43		15.76	10.18	0.00	0.000	0.000
4/30/1995	8.04	30.14	3.75		16.00	11.08	0.00	0.000	0.000
5/31/1995	7.31	29.40	4.02		16.23	11.99	0.00	0.000	0.000

Date	Oil Rate (CD) m3/d	Water Rate (CD) m3/d	Water Oil Ratio m3/m3	Water Inj Rate (CD) m3/d	Cum Oil Prod Km3	Cum Water Prod Km3	Cum Water Inj Km3	Voidage Replacement Ratio	Cum Voidage Replacement Ratio
6/30/1995	6.43	31.55	4.91		16.42	12.94	0.00	0.000	0.000
7/31/1995	6.64	28.97	4.36		16.63	13.84	0.00	0.000	0.000
8/31/1995	5.78	27.62	4.78	50.68	16.81	14.69	1.57	1.727	0.080
9/30/1995	4.97	25.11	5.05	22.44	16.96	15.45	2.24	0.844	0.109
10/31/1995	4.87	22.32	4.58	22.19	17.11	16.14	2.93	0.933	0.138
11/30/1995	5.20	30.37	5.84	19.23	17.26	17.05	3.51	0.602	0.158
12/31/1995	5.17	30.01	5.81	13.51	17.42	17.98	3.93	0.428	0.169
1/31/1996	5.31	30.91	5.82	18.46	17.59	18.94	4.50	0.568	0.186
2/29/1996	5.04	26.09	5.17	18.28	17.73	19.69	5.03	0.662	0.201
3/31/1996	5.14	30.58	5.95	18.98	17.89	20.64	5.62	0.591	0.216
4/30/1996	5.26	30.73	5.84	17.06	18.05	21.56	6.13	0.528	0.227
5/31/1996	4.84	25.71	5.31	4.11	18.20	22.36	6.26	0.151	0.225
6/30/1996	4.62	29.94	6.49	15.67	18.34	23.26	6.73	0.500	0.234
7/31/1996	3.66	29.84	8.16	15.07	18.45	24.18	7.20	0.487	0.242
8/31/1996	5.79	29.42	5.08	14.68	18.63	25.10	7.65	0.471	0.249
9/30/1996	6.89	28.62	4.15	13.83	18.84	25.95	8.07	0.451	0.255
10/31/1996	5.79	27.70	4.79	11.91	19.02	26.81	8.43	0.405	0.259
11/30/1996	4.75	29.56	6.22	12.65	19.16	27.70	8.81	0.408	0.264
12/31/1996	5.26	30.00	5.70	12.38	19.33	28.63	9.20	0.392	0.267
1/31/1997	5.14	27.77	5.40	12.79	19.48	29.49	9.59	0.436	0.272
2/28/1997	4.88	27.75	5.68	10.75	19.62	30.27	9.89	0.368	0.274
3/31/1997	3.65	30.54	8.36	12.32	19.73	31.21	10.28	0.390	0.277
4/30/1997	3.95	31.69	8.02	12.07	19.85	32.17	10.64	0.367	0.279
5/31/1997	3.86	30.30	7.86	12.44	19.97	33.10	11.02	0.395	0.282
6/30/1997	3.31	23.56	7.13	12.83	20.07	33.81	11.41	0.523	0.287
7/31/1997	2.90	30.07	10.38	12.10	20.16	34.74	11.78	0.391	0.289
8/31/1997	2.93	30.72	10.48	12.92	20.25	35.70	12.19	0.409	0.292
9/30/1997	3.03	31.25	10.32	13.06	20.34	36.63	12.58	0.406	0.294
10/31/1997	3.02	29.81	9.88	13.62	20.44	37.56	13.00	0.443	0.298
11/30/1997	3.08	30.29	9.82	12.42	20.53	38.47	13.37	0.398	0.300
12/31/1997	3.14	30.28	9.65	11.93	20.63	39.41	13.74	0.382	0.302
1/31/1998	2.70	28.29	10.46	12.06	20.71	40.28	14.12	0.414	0.304
2/28/1998	2.37	26.46	11.16	8.44	20.78	41.02	14.35	0.311	0.304
3/31/1998	2.07	26.68	12.91	9.15	20.84	41.85	14.64	0.335	0.304
4/30/1998	2.03	27.90	13.72	12.35	20.90	42.69	15.01	0.433	0.307
5/31/1998	1.79	28.35	15.83	10.55	20.96	43.57	15.33	0.365	0.308
6/30/1998	1.66	26.70	16.09	9.31	21.01	44.37	15.61	0.342	0.308
7/31/1998	1.44	29.22	20.24	9.65	21.05	45.27	15.91	0.325	0.309
8/31/1998	0.78	26.99	34.57	7.00	21.08	46.11	16.13	0.257	0.308
9/30/1998	0.69	22.41	32.71	7.71	21.10	46.78	16.36	0.341	0.308
10/31/1998	1.38	25.64	18.59	9.70	21.14	47.58	16.66	0.372	0.309
11/30/1998	3.69	24.18	6.56	9.82	21.25	48.30	16.96	0.388	0.310
12/31/1998	3.92	26.21	6.68	9.41	21.37	49.11	17.25	0.343	0.311
1/31/1999	3.40	24.91	7.32	9.68	21.48	49.89	17.55	0.373	0.312
2/28/1999	3.62	28.11	7.76	9.86	21.58	50.67	17.82	0.338	0.312
3/31/1999	3.65	28.02	7.68	8.94	21.69	51.54	18.10	0.307	0.312
4/30/1999	3.18	25.77	8.10	9.54	21.79	52.32	18.39	0.357	0.313
5/31/1999	3.16	24.61	7.78	9.31	21.89	53.08	18.68	0.364	0.313

Date	Oil Rate (CD) m3/d	Water Rate (CD) m3/d	Water Oil Ratio m3/m3	Water Inj Rate (CD) m3/d	Cum Oil Prod Km3	Cum Water Prod Km3	Cum Water Inj Km3	Voidage Replacement Ratio	Cum Voidage Replacement Ratio
6/30/1999	2.25	25.74	11.42	9.49	21.95	53.85	18.96	0.359	0.314
7/31/1999	2.06	26.27	12.76	9.49	22.02	54.67	19.25	0.353	0.314
8/31/1999	1.88	24.64	13.09	9.27	22.08	55.43	19.54	0.368	0.315
9/30/1999	1.99	26.09	13.12		22.13	56.21	19.54	0.000	0.311
10/31/1999	2.02	25.25	12.49	9.10	22.20	56.99	19.82	0.352	0.312
11/30/1999	1.98	25.23	12.78	9.44	22.26	57.75	20.11	0.366	0.312
12/31/1999	1.95	25.85	13.29	9.51	22.32	58.55	20.40	0.360	0.313
1/31/2000	1.87	27.31	14.57	9.35	22.38	59.40	20.69	0.335	0.313
2/29/2000	1.90	26.21	13.77	8.91	22.43	60.16	20.95	0.333	0.313
3/31/2000	2.00	25.96	12.97	9.23	22.49	60.96	21.24	0.347	0.314
4/30/2000	1.86	25.86	13.89	9.63	22.55	61.74	21.52	0.364	0.314
5/31/2000	2.00	26.92	13.43	9.53	22.61	62.57	21.82	0.346	0.315
6/30/2000	1.69	25.46	15.03	9.57	22.66	63.34	22.11	0.369	0.315
7/31/2000	1.51	26.03	17.22	9.96	22.71	64.15	22.42	0.376	0.316
8/31/2000	1.52	25.64	16.91	9.62	22.75	64.94	22.71	0.369	0.317
9/30/2000	1.41	25.84	18.33	9.65	22.80	65.72	23.00	0.367	0.317
10/31/2000	1.40	24.97	17.84	9.32	22.84	66.49	23.29	0.367	0.318
11/30/2000	1.52	24.83	16.28	9.55	22.89	67.23	23.58	0.378	0.318
12/31/2000	1.36	24.78	18.24	9.49	22.93	68.00	23.87	0.377	0.319
1/31/2001	1.33	24.23	18.21	9.51	22.97	68.75	24.17	0.386	0.320
2/28/2001	1.41	24.04	17.04	9.64	23.01	69.43	24.44	0.394	0.320
3/31/2001	1.35	23.69	17.48	9.40	23.05	70.16	24.73	0.390	0.321
4/30/2001	1.31	23.87	18.18	8.26	23.09	70.88	24.98	0.340	0.321
5/31/2001	1.33	23.13	17.36	9.03	23.13	71.59	25.26	0.384	0.322
6/30/2001	1.42	23.05	16.27	8.59	23.17	72.29	25.51	0.366	0.322
7/31/2001	1.32	21.65	16.41	8.68	23.22	72.96	25.78	0.394	0.323
8/31/2001	1.32	19.35	14.68	9.91	23.26	73.56	26.09	0.502	0.324
9/30/2001	1.20	16.21	13.54	8.80	23.29	74.04	26.36	0.531	0.325
10/31/2001	1.15	15.90	13.83	9.01	23.33	74.54	26.63	0.555	0.327
11/30/2001	0.99	10.30	10.43	7.16	23.36	74.84	26.85	0.676	0.328
12/31/2001	1.02	11.72	11.50	9.96	23.39	75.21	27.16	0.829	0.330
1/31/2002	1.02	11.60	11.33	10.01	23.42	75.57	27.47	0.840	0.333
2/28/2002	1.05	11.38	10.84	9.51	23.45	75.89	27.73	0.813	0.335
3/31/2002	1.18	11.92	10.08	9.36	23.49	76.26	28.02	0.763	0.336
4/30/2002	1.21	12.37	10.23	9.79	23.52	76.63	28.32	0.769	0.338
5/31/2002	1.18	12.90	10.96	9.95	23.56	77.03	28.63	0.751	0.340
6/30/2002	1.11	13.17	11.88	10.01	23.59	77.42	28.93	0.741	0.342
7/31/2002	1.07	13.71	12.77	6.32	23.63	77.85	29.12	0.450	0.343
8/31/2002	1.10	18.50	16.79	4.93	23.66	78.42	29.28	0.262	0.342
9/30/2002	1.14	21.60	18.89	7.87	23.69	79.07	29.51	0.359	0.343
10/31/2002	0.88	25.34	28.67	8.85	23.72	79.85	29.79	0.346	0.343
11/30/2002	0.82	27.03	32.89	9.65	23.75	80.66	30.08	0.354	0.343
12/31/2002	0.86	25.36	29.34	9.14	23.77	81.45	30.36	0.357	0.343
1/31/2003	0.85	25.14	29.57	9.51	23.80	82.23	30.65	0.375	0.343
2/28/2003	0.88	25.19	28.79	9.64	23.82	82.94	30.92	0.379	0.343
3/31/2003	0.38	28.05	74.64	9.30	23.84	83.80	31.21	0.330	0.343
4/30/2003	0.56	33.33	58.99	8.64	23.85	84.80	31.47	0.258	0.342
5/31/2003	0.64	34.74	54.25	8.48	23.87	85.88	31.73	0.243	0.341

Date	Oil Rate (CD) m3/d	Water Rate (CD) m3/d	Water Oil Ratio m3/m3	Water Inj Rate (CD) m3/d	Cum Oil Prod Km3	Cum Water Prod Km3	Cum Water Inj Km3	Voidage Replacement Ratio	Cum Voidage Replacement Ratio
6/30/2003	0.65	34.77	53.49	8.05	23.89	86.92	31.98	0.230	0.340
7/31/2003	0.69	33.93	49.49	9.14	23.91	87.98	32.26	0.268	0.339
8/31/2003	0.94	32.57	34.82	10.57	23.94	88.99	32.59	0.322	0.339
9/30/2003	0.93	27.58	29.66	10.86	23.97	89.81	32.91	0.390	0.339
10/31/2003	0.94	28.44	30.20	10.93	24.00	90.70	33.25	0.381	0.340
11/30/2003	0.73	23.14	31.55	10.81	24.02	91.39	33.58	0.463	0.341
12/31/2003	0.91	27.41	29.97	10.25	24.05	92.24	33.89	0.370	0.341
1/31/2004	0.91	27.75	30.40	10.90	24.08	93.10	34.23	0.389	0.341
2/29/2004	0.91	27.32	30.12	10.80	24.10	93.89	34.54	0.391	0.342
3/31/2004	0.95	27.82	29.44	11.43	24.13	94.75	34.90	0.407	0.342
4/30/2004	0.90	27.37	30.47	11.30	24.16	95.58	35.24	0.409	0.343
5/31/2004	1.06	28.47	26.91	11.06	24.19	96.46	35.58	0.384	0.343
6/30/2004	1.43	28.56	19.95	10.89	24.24	97.31	35.91	0.376	0.343
7/31/2004	1.48	28.92	19.59	10.96	24.28	98.21	36.25	0.373	0.344
8/31/2004	1.49	30.30	20.38	10.70	24.33	99.15	36.58	0.348	0.344
9/30/2004	1.45	26.01	18.00	10.47	24.37	99.93	36.89	0.396	0.344
10/31/2004	1.32	24.92	18.84	1.72	24.41	100.70	36.95	0.068	0.342
11/30/2004	1.41	29.59	21.01	8.34	24.45	101.59	37.20	0.278	0.342
12/31/2004	1.35	28.60	21.19	10.88	24.50	102.48	37.53	0.375	0.342
1/31/2005	1.51	35.19	23.31	10.86	24.54	103.57	37.87	0.305	0.341
2/28/2005	1.52	34.18	22.52	10.24	24.59	104.53	38.16	0.296	0.341
3/31/2005	1.47	32.37	22.03	10.18	24.63	105.53	38.47	0.310	0.341
4/30/2005	1.38	31.25	22.64	10.77	24.67	106.47	38.80	0.340	0.341
5/31/2005	1.29	29.30	22.79	10.57	24.71	107.37	39.12	0.356	0.341
6/30/2005	1.29	31.22	24.14	10.38	24.75	108.31	39.43	0.328	0.341
7/31/2005	1.32	29.68	22.44	10.19	24.79	109.23	39.75	0.339	0.341
8/31/2005	1.32	25.74	19.53	10.35	24.83	110.03	40.07	0.396	0.341
9/30/2005	1.32	25.20	19.12	10.80	24.87	110.79	40.40	0.422	0.342
10/31/2005	1.30	25.11	19.39	10.14	24.91	111.56	40.71	0.398	0.342
11/30/2005	1.30	24.73	19.02	10.50	24.95	112.31	41.02	0.418	0.343
12/31/2005	1.31	24.60	18.83	10.04	24.99	113.07	41.34	0.402	0.343
1/31/2006	1.27	24.27	19.14	10.56	25.03	113.82	41.66	0.429	0.343
2/28/2006	1.25	23.11	18.49	10.53	25.07	114.47	41.96	0.448	0.344
3/31/2006	1.20	23.38	19.46	10.18	25.10	115.19	42.27	0.429	0.345
4/30/2006	1.40	23.03	16.49	7.57	25.15	115.88	42.50	0.323	0.344
5/31/2006	1.34	21.72	16.20	8.96	25.19	116.56	42.78	0.405	0.345
6/30/2006	1.31	22.79	17.40	10.01	25.23	117.24	43.08	0.432	0.345
7/31/2006	1.29	22.50	17.46	10.13	25.27	117.94	43.39	0.443	0.346
8/31/2006	1.25	22.68	18.15	10.00	25.31	118.64	43.70	0.434	0.346
9/30/2006	1.30	22.63	17.41	9.75	25.34	119.32	44.00	0.424	0.347
10/31/2006	1.25	22.70	18.09		25.38	120.02	44.00	0.000	0.345
11/30/2006	1.28	22.93	17.94		25.42	120.71	44.00	0.000	0.343
12/31/2006	1.22	22.78	18.73	0.43	25.46	121.42	44.01	0.018	0.341
1/31/2007	1.19	22.30	18.74	7.76	25.50	122.11	44.25	0.342	0.341
2/28/2007	1.21	21.47	17.73	10.78	25.53	122.71	44.55	0.494	0.342
3/31/2007	1.16	21.07	18.17	10.70	25.57	123.36	44.88	0.499	0.343
4/30/2007	1.14	20.95	18.37	10.73	25.60	123.99	45.20	0.504	0.343
5/31/2007	1.14	20.72	18.17	10.61	25.64	124.63	45.53	0.504	0.344

Date	Oil Rate (CD) m3/d	Water Rate (CD) m3/d	Water Oil Ratio m3/m3	Water Inj Rate (CD) m3/d	Cum Oil Prod Km3	Cum Water Prod Km3	Cum Water Inj Km3	Voidage Replacement Ratio	Cum Voidage Replacement Ratio
6/30/2007	1.11	20.23	18.26	10.38	25.67	125.24	45.84	0.505	0.345
7/31/2007	1.10	20.34	18.41	10.47	25.70	125.87	46.17	0.506	0.346
8/31/2007	1.11	20.24	18.24	9.67	25.74	126.50	46.47	0.470	0.346
9/30/2007	1.10	20.21	18.46	10.50	25.77	127.11	46.78	0.511	0.347
10/31/2007	1.12	20.52	18.36	10.01	25.81	127.74	47.09	0.480	0.348
11/30/2007	1.12	21.05	18.74	10.82	25.84	128.37	47.42	0.506	0.348
12/31/2007	1.12	20.57	18.38	10.74	25.87	129.01	47.75	0.514	0.349
1/31/2008	1.16	20.58	17.77	10.66	25.91	129.65	48.08	0.510	0.350
2/29/2008	1.12	19.99	17.89	10.27	25.94	130.23	48.38	0.505	0.351
3/31/2008	1.12	20.06	17.97	10.66	25.98	130.85	48.71	0.523	0.351
4/30/2008	1.14	19.49	17.07	10.24	26.01	131.44	49.02	0.516	0.352
5/31/2008	1.14	18.70	16.35	9.79	26.05	132.01	49.32	0.514	0.353
6/30/2008	1.05	18.68	17.82	9.08	26.08	132.58	49.59	0.478	0.353
7/31/2008	1.19	20.74	17.47	10.21	26.11	133.22	49.91	0.484	0.354
8/31/2008	1.16	20.13	17.34	10.24	26.15	133.84	50.23	0.500	0.355
9/30/2008	1.20	20.86	17.38	10.10	26.19	134.47	50.53	0.476	0.355
10/31/2008	1.18	20.90	17.67	10.11	26.22	135.12	50.84	0.476	0.356
11/30/2008	1.22	20.62	16.88	10.43	26.26	135.73	51.16	0.497	0.356
12/31/2008	1.20	20.54	17.12	10.38	26.30	136.37	51.48	0.497	0.357
1/31/2009	1.13	19.86	17.54	10.37	26.33	136.99	51.80	0.513	0.358
2/28/2009	1.14	20.49	17.98	9.78	26.36	137.56	52.07	0.469	0.358
3/31/2009	1.18	20.51	17.39	10.15	26.40	138.20	52.39	0.487	0.359
4/30/2009	0.92	14.24	15.43	3.08	26.43	138.62	52.48	0.212	0.358
5/31/2009	0.88	14.25	16.24	1.98	26.46	139.07	52.54	0.137	0.357
6/30/2009	1.07	21.17	19.78	10.68	26.49	139.70	52.86	0.497	0.358
7/31/2009	1.08	21.90	20.26	10.53	26.52	140.38	53.19	0.474	0.359
8/31/2009	1.07	20.61	19.34	6.79	26.55	141.02	53.40	0.324	0.358
9/30/2009	1.03	20.84	20.14	10.36	26.59	141.64	53.71	0.490	0.359
10/31/2009	1.16	20.97	18.05	10.03	26.62	142.29	54.02	0.471	0.360
11/30/2009	1.10	20.11	18.28	10.00	26.65	142.90	54.32	0.489	0.360
12/31/2009	1.08	19.01	17.54	10.63	26.69	143.49	54.65	0.550	0.361
1/31/2010	1.06	19.19	18.03	8.55	26.72	144.08	54.92	0.438	0.361
2/28/2010	1.08	19.41	17.97	9.65	26.75	144.62	55.19	0.489	0.362
3/31/2010	1.15	19.32	16.77	9.27	26.79	145.22	55.47	0.472	0.362
4/30/2010	1.10	18.38	16.66	9.93	26.82	145.77	55.77	0.531	0.363
5/31/2010	1.08	18.42	17.12	10.73	26.85	146.35	56.10	0.573	0.363
6/30/2010	1.12	17.07	15.29	8.78	26.89	146.86	56.37	0.504	0.364
7/31/2010	1.13	17.44	15.49	7.44	26.92	147.40	56.60	0.418	0.364
8/31/2010	1.04	16.64	16.00	2.57	26.95	147.91	56.68	0.151	0.363
9/30/2010	1.12	18.39	16.44	8.70	26.99	148.47	56.94	0.464	0.364
10/31/2010	0.69	13.44	19.52	7.63	27.01	148.88	57.18	0.559	0.364
11/30/2010	1.08	18.91	17.48	8.83	27.04	149.45	57.44	0.459	0.365
12/31/2010	1.10	17.15	15.64	8.71	27.08	149.98	57.71	0.498	0.365

Pattern: 12-28-010-29W1 Set: Kola Unit #1

Oil Formation Vol. Factor : 1.05 m3/m3

Water Formation Vol Factor : 1.00 m3/m3

Water / Oil Ratio : 8.88 m3/m3

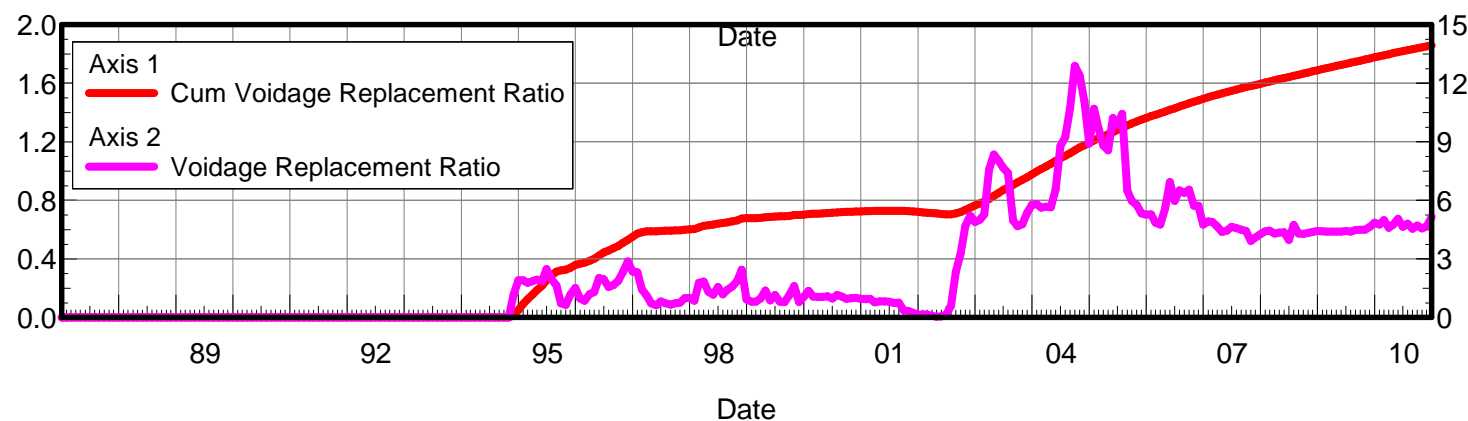
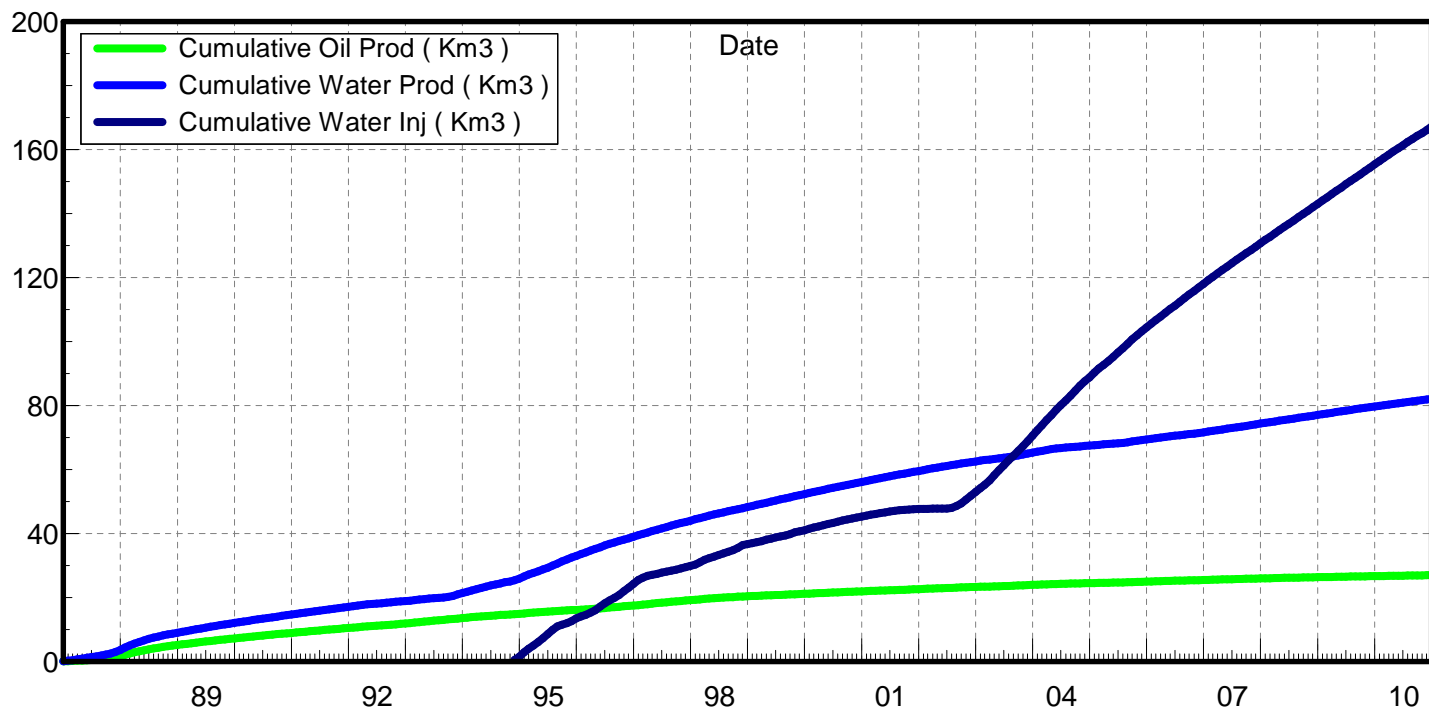
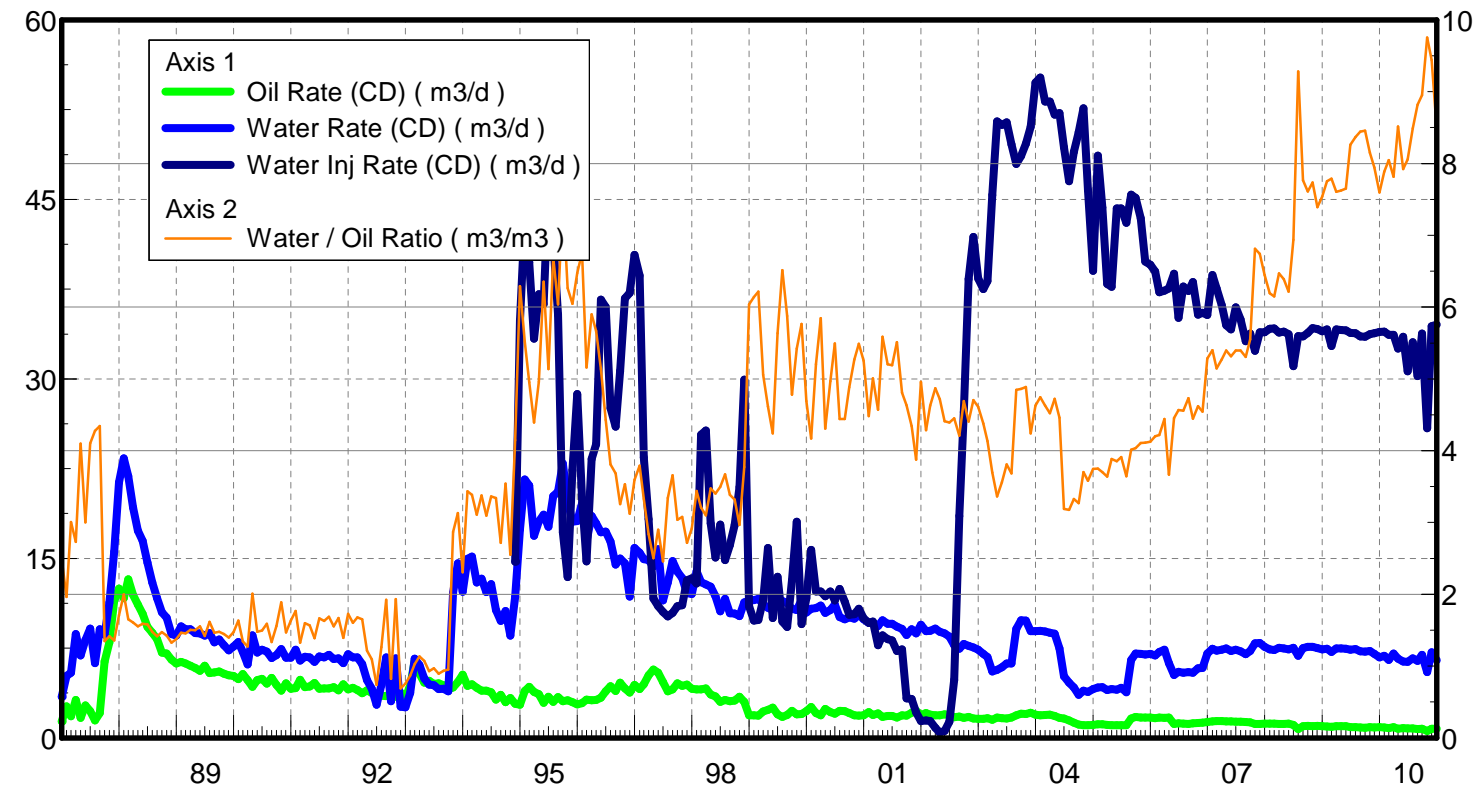
July 26, 2011

Operator: Tundra_Oil_and_Gas_Patnership

Oil Rate (CD) : 0.77 m3/d

Water Rate (CD) : 6.85 m3/d

Water Inj Rate (CD) : 34.21 m3/d



Date	Oil Rate (CD) m3/d	Water Rate (CD) m3/d	Water Oil Ratio m3/m3	Water Inj Rate (CD) m3/d	Cum Oil Prod Km3	Cum Water Prod Km3	Cum Water Inj Km3	Voidage Replacement Ratio	Cum Voidage Replacement Ratio
12/31/1986	1.38	3.43	2.49		0.04	0.11	0.00	0.000	0.000
1/31/1987	2.64	5.18	1.96		0.12	0.27	0.00	0.000	0.000
2/28/1987	1.81	5.46	3.01		0.18	0.42	0.00	0.000	0.000
3/31/1987	3.18	8.68	2.73		0.27	0.69	0.00	0.000	0.000
4/30/1987	1.68	6.88	4.10		0.32	0.90	0.00	0.000	0.000
5/31/1987	2.72	8.17	3.00		0.41	1.15	0.00	0.000	0.000
6/30/1987	2.23	9.13	4.10		0.48	1.42	0.00	0.000	0.000
7/31/1987	1.46	6.25	4.28		0.52	1.62	0.00	0.000	0.000
8/31/1987	2.09	9.07	4.34		0.59	1.90	0.00	0.000	0.000
9/30/1987	6.39	8.63	1.35		0.78	2.16	0.00	0.000	0.000
10/31/1987	7.99	11.30	1.41		1.02	2.51	0.00	0.000	0.000
11/30/1987	11.47	15.56	1.36		1.37	2.97	0.00	0.000	0.000
12/31/1987	12.49	21.36	1.71		1.76	3.64	0.00	0.000	0.000
1/31/1988	11.68	23.36	2.00		2.12	4.36	0.00	0.000	0.000
2/29/1988	13.25	21.86	1.65		2.50	4.99	0.00	0.000	0.000
3/31/1988	11.95	19.23	1.61		2.87	5.59	0.00	0.000	0.000
4/30/1988	11.13	17.31	1.55		3.21	6.11	0.00	0.000	0.000
5/31/1988	10.36	16.45	1.59		3.53	6.62	0.00	0.000	0.000
6/30/1988	9.27	14.64	1.58		3.81	7.06	0.00	0.000	0.000
7/31/1988	8.80	13.00	1.48		4.08	7.46	0.00	0.000	0.000
8/31/1988	8.25	11.66	1.41		4.34	7.82	0.00	0.000	0.000
9/30/1988	7.13	10.50	1.47		4.55	8.14	0.00	0.000	0.000
10/31/1988	7.04	10.03	1.42		4.77	8.45	0.00	0.000	0.000
11/30/1988	6.54	8.68	1.33		4.96	8.71	0.00	0.000	0.000
12/31/1988	6.21	8.55	1.38		5.16	8.97	0.00	0.000	0.000
1/31/1989	6.36	9.32	1.46		5.35	9.26	0.00	0.000	0.000
2/28/1989	6.23	9.07	1.46		5.53	9.52	0.00	0.000	0.000
3/31/1989	6.04	9.08	1.50		5.71	9.80	0.00	0.000	0.000
4/30/1989	5.84	8.76	1.50		5.89	10.06	0.00	0.000	0.000
5/31/1989	5.62	8.73	1.55		6.06	10.33	0.00	0.000	0.000
6/30/1989	6.02	8.54	1.42		6.24	10.59	0.00	0.000	0.000
7/31/1989	5.41	8.75	1.62		6.41	10.86	0.00	0.000	0.000
8/31/1989	5.46	7.99	1.46		6.58	11.11	0.00	0.000	0.000
9/30/1989	5.56	8.23	1.48		6.75	11.35	0.00	0.000	0.000
10/31/1989	5.36	7.75	1.44		6.92	11.59	0.00	0.000	0.000
11/30/1989	5.23	7.30	1.40		7.07	11.81	0.00	0.000	0.000
12/31/1989	5.18	7.64	1.47		7.23	12.05	0.00	0.000	0.000
1/31/1990	4.91	8.01	1.63		7.38	12.30	0.00	0.000	0.000
2/28/1990	5.34	7.18	1.34		7.53	12.50	0.00	0.000	0.000
3/31/1990	4.82	6.13	1.27		7.68	12.69	0.00	0.000	0.000
4/30/1990	4.27	8.57	2.01		7.81	12.95	0.00	0.000	0.000
5/31/1990	4.83	7.14	1.48		7.96	13.17	0.00	0.000	0.000
6/30/1990	4.92	7.37	1.50		8.11	13.39	0.00	0.000	0.000
7/31/1990	4.54	7.21	1.59		8.25	13.61	0.00	0.000	0.000
8/31/1990	5.01	6.67	1.33		8.41	13.82	0.00	0.000	0.000
9/30/1990	4.44	6.91	1.56		8.54	14.03	0.00	0.000	0.000
10/31/1990	3.94	7.43	1.89		8.66	14.26	0.00	0.000	0.000
11/30/1990	4.56	6.69	1.47		8.80	14.46	0.00	0.000	0.000

Date	Oil Rate (CD) m3/d	Water Rate (CD) m3/d	Water Oil Ratio m3/m3	Water Inj Rate (CD) m3/d	Cum Oil Prod Km3	Cum Water Prod Km3	Cum Water Inj Km3	Voidage Replacement Ratio	Cum Voidage Replacement Ratio
12/31/1990	4.10	6.70	1.63		8.92	14.67	0.00	0.000	0.000
1/31/1991	4.16	7.36	1.77		9.05	14.89	0.00	0.000	0.000
2/28/1991	4.86	6.45	1.33		9.19	15.07	0.00	0.000	0.000
3/31/1991	4.24	6.78	1.60		9.32	15.28	0.00	0.000	0.000
4/30/1991	4.30	6.74	1.57		9.45	15.49	0.00	0.000	0.000
5/31/1991	4.58	6.36	1.39		9.59	15.68	0.00	0.000	0.000
6/30/1991	4.10	6.81	1.66		9.71	15.89	0.00	0.000	0.000
7/31/1991	4.14	6.73	1.63		9.84	16.10	0.00	0.000	0.000
8/31/1991	4.13	6.95	1.69		9.97	16.31	0.00	0.000	0.000
9/30/1991	4.25	6.60	1.55		10.10	16.51	0.00	0.000	0.000
10/31/1991	3.98	6.65	1.67		10.22	16.72	0.00	0.000	0.000
11/30/1991	4.48	6.24	1.39		10.36	16.90	0.00	0.000	0.000
12/31/1991	4.05	7.00	1.73		10.48	17.12	0.00	0.000	0.000
1/31/1992	4.20	6.72	1.60		10.61	17.33	0.00	0.000	0.000
2/29/1992	4.01	6.72	1.68		10.73	17.52	0.00	0.000	0.000
3/31/1992	3.73	6.17	1.65		10.84	17.72	0.00	0.000	0.000
4/30/1992	3.97	4.83	1.22		10.96	17.86	0.00	0.000	0.000
5/31/1992	3.75	4.11	1.09		11.08	17.99	0.00	0.000	0.000
6/30/1992	3.74	2.76	0.74		11.19	18.07	0.00	0.000	0.000
7/31/1992	3.51	4.43	1.26		11.30	18.21	0.00	0.000	0.000
8/31/1992	3.49	6.72	1.92		11.41	18.42	0.00	0.000	0.000
9/30/1992	3.74	3.07	0.82		11.52	18.51	0.00	0.000	0.000
10/31/1992	3.45	6.66	1.93		11.63	18.71	0.00	0.000	0.000
11/30/1992	3.79	2.61	0.69		11.74	18.79	0.00	0.000	0.000
12/31/1992	3.38	2.56	0.76		11.85	18.87	0.00	0.000	0.000
1/31/1993	4.34	3.75	0.87		11.98	18.99	0.00	0.000	0.000
2/28/1993	6.44	6.63	1.03		12.16	19.17	0.00	0.000	0.000
3/31/1993	5.36	6.08	1.13		12.33	19.36	0.00	0.000	0.000
4/30/1993	4.61	4.95	1.07		12.47	19.51	0.00	0.000	0.000
5/31/1993	4.78	4.44	0.93		12.61	19.65	0.00	0.000	0.000
6/30/1993	4.52	4.39	0.97		12.75	19.78	0.00	0.000	0.000
7/31/1993	4.56	4.08	0.89		12.89	19.91	0.00	0.000	0.000
8/31/1993	4.41	4.11	0.93		13.03	20.03	0.00	0.000	0.000
9/30/1993	4.08	3.88	0.95		13.15	20.15	0.00	0.000	0.000
10/31/1993	4.23	12.13	2.87		13.28	20.53	0.00	0.000	0.000
11/30/1993	4.66	14.60	3.13		13.42	20.96	0.00	0.000	0.000
12/31/1993	5.29	12.22	2.31		13.58	21.34	0.00	0.000	0.000
1/31/1994	4.36	14.96	3.43		13.72	21.81	0.00	0.000	0.000
2/28/1994	4.48	15.16	3.38		13.85	22.23	0.00	0.000	0.000
3/31/1994	4.18	13.00	3.11		13.98	22.63	0.00	0.000	0.000
4/30/1994	3.94	13.30	3.38		14.09	23.03	0.00	0.000	0.000
5/31/1994	3.94	12.19	3.10		14.22	23.41	0.00	0.000	0.000
6/30/1994	3.82	12.85	3.36		14.33	23.80	0.00	0.000	0.000
7/31/1994	3.20	10.68	3.34		14.43	24.13	0.00	0.000	0.000
8/31/1994	3.60	9.76	2.71		14.54	24.43	0.00	0.000	0.000
9/30/1994	3.00	10.61	3.54		14.63	24.75	0.00	0.000	0.000
10/31/1994	3.34	8.54	2.55		14.73	25.01	0.00	0.000	0.000
11/30/1994	2.84	11.78	4.15	14.73	14.82	25.37	0.44	1.166	0.015

Date	Oil Rate (CD) m3/d	Water Rate (CD) m3/d	Water Oil Ratio m3/m3	Water Inj Rate (CD) m3/d	Cum Oil Prod Km3	Cum Water Prod Km3	Cum Water Inj Km3	Voidage Replacement Ratio	Cum Voidage Replacement Ratio
12/31/1994	2.77	17.44	6.29	34.87	14.90	25.91	1.52	1.909	0.050
1/31/1995	3.91	21.59	5.52	43.28	15.03	26.58	2.86	1.901	0.092
2/28/1995	4.26	21.10	4.96	39.73	15.15	27.17	3.98	1.776	0.125
3/31/1995	3.84	16.88	4.39	33.36	15.26	27.69	5.01	1.850	0.155
4/30/1995	3.65	18.09	4.96	37.09	15.37	28.23	6.12	1.934	0.187
5/31/1995	2.94	18.67	6.35	36.26	15.47	28.81	7.25	1.855	0.217
6/30/1995	3.43	17.64	5.14	46.19	15.57	29.34	8.63	2.474	0.254
7/31/1995	3.02	20.21	6.69	41.61	15.66	29.97	9.92	1.971	0.286
8/31/1995	3.41	20.58	6.04	35.38	15.77	30.61	11.02	1.638	0.312
9/30/1995	3.05	22.93	7.51	17.19	15.86	31.29	11.54	0.721	0.320
10/31/1995	3.15	19.77	6.27	13.44	15.96	31.91	11.95	0.649	0.326
11/30/1995	2.99	18.07	6.04	22.38	16.05	32.45	12.62	1.180	0.339
12/31/1995	2.80	18.13	6.47	28.74	16.13	33.01	13.51	1.515	0.357
1/31/1996	2.90	19.58	6.76	19.99	16.22	33.62	14.13	0.978	0.367
2/29/1996	3.19	16.44	5.16	14.76	16.32	34.10	14.56	0.848	0.374
3/31/1996	3.15	18.55	5.90	23.30	16.41	34.67	15.28	1.195	0.386
4/30/1996	3.16	17.92	5.67	24.53	16.51	35.21	16.02	1.300	0.399
5/31/1996	3.35	17.18	5.14	36.63	16.61	35.74	17.16	2.014	0.421
6/30/1996	3.89	17.24	4.43	36.00	16.73	36.26	18.24	1.956	0.442
7/31/1996	4.31	16.42	3.81	27.56	16.86	36.77	19.09	1.556	0.457
8/31/1996	3.93	14.49	3.68	26.00	16.98	37.22	19.90	1.660	0.470
9/30/1996	4.60	14.99	3.26	30.66	17.12	37.67	20.82	1.873	0.486
10/31/1996	4.13	14.60	3.53	36.74	17.25	38.12	21.95	2.319	0.507
11/30/1996	3.79	11.82	3.12	37.18	17.36	38.47	23.07	2.870	0.528
12/31/1996	4.42	15.87	3.59	40.36	17.50	38.96	24.32	2.348	0.550
1/31/1997	4.08	15.47	3.79	38.64	17.63	39.44	25.52	2.315	0.571
2/28/1997	4.49	14.95	3.33	23.44	17.75	39.86	26.18	1.439	0.579
3/31/1997	5.24	14.86	2.84	18.29	17.91	40.32	26.74	1.114	0.585
4/30/1997	5.72	14.32	2.50	11.64	18.09	40.75	27.09	0.726	0.587
5/31/1997	5.44	15.77	2.90	11.01	18.26	41.24	27.43	0.633	0.587
6/30/1997	4.67	11.48	2.46	10.52	18.40	41.59	27.75	0.816	0.589
7/31/1997	3.89	12.98	3.34	10.14	18.52	41.99	28.06	0.717	0.590
8/31/1997	4.04	14.79	3.66	10.44	18.64	42.45	28.39	0.653	0.591
9/30/1997	4.57	13.88	3.04	11.00	18.78	42.86	28.72	0.721	0.592
10/31/1997	4.34	13.35	3.08	11.10	18.91	43.28	29.06	0.758	0.594
11/30/1997	4.46	12.11	2.72	13.16	19.05	43.64	29.46	0.979	0.597
12/31/1997	4.12	12.03	2.92	13.35	19.17	44.01	29.87	1.007	0.600
1/31/1998	4.05	13.93	3.44	12.90	19.30	44.45	30.27	0.852	0.603
2/28/1998	4.06	13.03	3.21	25.33	19.41	44.81	30.98	1.779	0.612
3/31/1998	4.14	12.82	3.10	25.70	19.54	45.21	31.77	1.828	0.622
4/30/1998	3.64	12.63	3.47	17.94	19.65	45.59	32.31	1.307	0.628
5/31/1998	3.48	11.84	3.41	15.06	19.76	45.95	32.78	1.169	0.632
6/30/1998	3.02	10.58	3.50	17.82	19.85	46.27	33.31	1.552	0.638
7/31/1998	3.17	11.63	3.67	14.87	19.95	46.63	33.78	1.182	0.642
8/31/1998	3.08	10.42	3.39	16.13	20.04	46.95	34.28	1.422	0.647
9/30/1998	3.13	10.39	3.32	17.79	20.14	47.27	34.81	1.570	0.653
10/31/1998	3.43	10.17	2.96	20.96	20.24	47.58	35.46	1.872	0.661
11/30/1998	3.00	11.32	3.77	29.93	20.33	47.92	36.36	2.449	0.673

Date	Oil Rate (CD) m3/d	Water Rate (CD) m3/d	Water Oil Ratio m3/m3	Water Inj Rate (CD) m3/d	Cum Oil Prod Km3	Cum Water Prod Km3	Cum Water Inj Km3	Voidage Replacement Ratio	Cum Voidage Replacement Ratio
12/31/1998	1.90	11.47	6.04	11.01	20.39	48.28	36.70	0.914	0.675
1/31/1999	1.87	11.51	6.14	9.79	20.45	48.63	37.00	0.812	0.676
2/28/1999	1.87	11.63	6.22	9.85	20.50	48.96	37.28	0.808	0.677
3/31/1999	2.21	11.18	5.06	11.52	20.57	49.31	37.63	0.973	0.679
4/30/1999	2.35	10.87	4.62	15.89	20.64	49.63	38.11	1.373	0.683
5/31/1999	2.52	10.70	4.24	10.02	20.72	49.96	38.42	0.875	0.684
6/30/1999	1.98	11.16	5.64	13.48	20.78	50.30	38.83	1.146	0.687
7/31/1999	1.75	11.43	6.51	9.74	20.83	50.65	39.13	0.814	0.688
8/31/1999	1.92	11.26	5.88	9.27	20.89	51.00	39.41	0.783	0.688
9/30/1999	2.26	10.78	4.78	13.15	20.96	51.33	39.81	1.148	0.691
10/31/1999	1.97	10.68	5.42	18.06	21.02	51.66	40.37	1.602	0.697
11/30/1999	2.00	11.53	5.76	9.50	21.08	52.00	40.65	0.784	0.697
12/31/1999	2.23	10.47	4.69	11.67	21.15	52.33	41.02	1.048	0.699
1/31/2000	2.59	10.80	4.17	15.71	21.23	52.66	41.50	1.357	0.703
2/29/2000	2.09	10.86	5.20	12.24	21.29	52.98	41.86	1.066	0.705
3/31/2000	1.89	11.07	5.84	12.23	21.35	53.32	42.24	1.051	0.707
4/30/2000	2.42	10.44	4.31	11.83	21.42	53.63	42.59	1.060	0.709
5/31/2000	2.15	10.69	4.97	12.23	21.49	53.96	42.97	1.079	0.712
6/30/2000	2.03	11.13	5.49	11.49	21.55	54.30	43.32	0.978	0.713
7/31/2000	2.27	10.09	4.44	12.45	21.62	54.61	43.70	1.156	0.715
8/31/2000	2.23	9.91	4.44	11.37	21.69	54.92	44.05	1.075	0.717
9/30/2000	2.06	10.07	4.88	10.27	21.75	55.22	44.36	0.961	0.719
10/31/2000	1.89	9.96	5.27	10.34	21.81	55.53	44.68	0.982	0.720
11/30/2000	1.87	10.29	5.49	10.80	21.87	55.84	45.01	0.996	0.721
12/31/2000	1.88	9.90	5.26	10.00	21.93	56.15	45.32	0.956	0.723
1/31/2001	2.14	9.60	4.48	9.62	21.99	56.44	45.62	0.939	0.724
2/28/2001	1.92	9.60	5.01	9.73	22.05	56.71	45.89	0.956	0.725
3/31/2001	2.05	9.35	4.57	7.75	22.11	57.00	46.13	0.779	0.725
4/30/2001	1.76	9.82	5.59	8.58	22.16	57.30	46.39	0.830	0.726
5/31/2001	1.83	9.54	5.21	8.25	22.22	57.59	46.64	0.818	0.726
6/30/2001	1.84	9.53	5.19	8.16	22.27	57.88	46.89	0.809	0.726
7/31/2001	1.69	9.30	5.51	7.26	22.33	58.17	47.11	0.741	0.726
8/31/2001	1.89	9.11	4.81	7.39	22.38	58.45	47.34	0.764	0.727
9/30/2001	1.86	8.61	4.64	3.30	22.44	58.71	47.44	0.361	0.725
10/31/2001	2.09	9.09	4.34	3.25	22.51	58.99	47.54	0.335	0.723
11/30/2001	2.26	8.75	3.88	2.13	22.57	59.25	47.60	0.226	0.721
12/31/2001	1.91	9.45	4.96	1.40	22.63	59.54	47.65	0.139	0.718
1/31/2002	2.08	8.92	4.29	1.45	22.70	59.82	47.69	0.152	0.716
2/28/2002	1.93	8.94	4.63	1.40	22.75	60.07	47.73	0.147	0.714
3/31/2002	1.88	9.14	4.87	0.85	22.81	60.35	47.76	0.087	0.711
4/30/2002	1.88	8.86	4.72	0.43	22.86	60.62	47.77	0.046	0.708
5/31/2002	1.98	8.74	4.41	0.57	22.93	60.89	47.79	0.061	0.705
6/30/2002	1.93	8.46	4.39	1.35	22.98	61.14	47.83	0.149	0.703
7/31/2002	1.74	7.74	4.45	4.86	23.04	61.38	47.98	0.589	0.703
8/31/2002	1.77	7.45	4.21	18.54	23.09	61.62	48.55	2.325	0.709
9/30/2002	1.67	7.85	4.69	27.22	23.14	61.85	49.37	3.261	0.718
10/31/2002	1.74	7.68	4.41	38.34	23.20	62.09	50.56	4.676	0.732
11/30/2002	1.61	7.56	4.70	41.86	23.25	62.32	51.81	5.208	0.748

Date	Oil Rate (CD) m3/d	Water Rate (CD) m3/d	Water Oil Ratio m3/m3	Water Inj Rate (CD) m3/d	Cum Oil Prod Km3	Cum Water Prod Km3	Cum Water Inj Km3	Voidage Replacement Ratio	Cum Voidage Replacement Ratio
12/31/2002	1.60	7.38	4.61	38.39	23.29	62.54	53.00	4.884	0.762
1/31/2003	1.61	7.03	4.38	37.50	23.34	62.76	54.17	4.991	0.777
2/28/2003	1.64	6.76	4.13	38.16	23.39	62.95	55.24	5.264	0.790
3/31/2003	1.50	5.55	3.70	45.38	23.44	63.12	56.64	7.566	0.808
4/30/2003	1.69	5.68	3.36	51.52	23.49	63.29	58.19	8.324	0.827
5/31/2003	1.66	5.90	3.56	51.22	23.54	63.48	59.78	8.004	0.848
6/30/2003	1.63	6.22	3.81	51.45	23.59	63.66	61.32	7.665	0.867
7/31/2003	1.69	6.22	3.68	49.60	23.64	63.86	62.86	7.380	0.886
8/31/2003	1.88	9.10	4.85	47.96	23.70	64.14	64.34	4.962	0.903
9/30/2003	2.02	9.82	4.86	48.63	23.76	64.43	65.80	4.665	0.920
10/31/2003	2.01	9.80	4.89	49.65	23.82	64.74	67.34	4.773	0.937
11/30/2003	2.10	8.92	4.24	51.08	23.88	65.00	68.87	5.351	0.955
12/31/2003	1.93	8.93	4.63	54.76	23.94	65.28	70.57	5.758	0.974
1/31/2004	1.89	8.95	4.74	55.17	24.00	65.56	72.28	5.798	0.994
2/29/2004	1.92	8.89	4.63	53.17	24.06	65.82	73.82	5.618	1.011
3/31/2004	1.95	8.80	4.52	53.17	24.12	66.09	75.47	5.669	1.030
4/30/2004	1.84	8.70	4.72	52.08	24.17	66.35	77.03	5.627	1.047
5/31/2004	1.68	7.48	4.46	52.22	24.23	66.58	78.65	6.542	1.065
6/30/2004	1.61	5.14	3.19	49.37	24.27	66.74	80.13	8.775	1.083
7/31/2004	1.45	4.61	3.18	46.52	24.32	66.88	81.58	9.216	1.100
8/31/2004	1.26	4.21	3.33	48.98	24.36	67.01	83.09	10.683	1.118
9/30/2004	1.10	3.61	3.27	50.60	24.39	67.12	84.61	12.854	1.137
10/31/2004	1.06	3.94	3.70	52.62	24.42	67.24	86.24	12.360	1.157
11/30/2004	1.07	3.83	3.58	45.80	24.46	67.36	87.62	11.035	1.173
12/31/2004	1.09	4.07	3.74	39.03	24.49	67.48	88.83	8.879	1.187
1/31/2005	1.13	4.22	3.75	48.66	24.53	67.61	90.34	10.672	1.205
2/28/2005	1.15	4.24	3.70	44.32	24.56	67.73	91.58	9.664	1.220
3/31/2005	1.10	3.99	3.64	37.95	24.59	67.86	92.75	8.787	1.233
4/30/2005	1.05	4.09	3.89	37.69	24.62	67.98	93.88	8.549	1.246
5/31/2005	1.05	4.03	3.85	44.25	24.66	68.10	95.26	10.191	1.262
6/30/2005	1.07	4.18	3.91	44.26	24.69	68.23	96.58	9.827	1.277
7/31/2005	1.05	3.82	3.65	43.05	24.72	68.35	97.92	10.408	1.293
8/31/2005	1.63	6.52	4.01	45.39	24.77	68.55	99.33	6.476	1.308
9/30/2005	1.75	7.05	4.04	45.12	24.82	68.76	100.68	5.956	1.321
10/31/2005	1.71	7.02	4.11	43.42	24.88	68.98	102.03	5.766	1.335
11/30/2005	1.70	6.98	4.11	39.81	24.93	69.19	103.22	5.319	1.347
12/31/2005	1.70	7.03	4.13	39.55	24.98	69.41	104.45	5.248	1.359
1/31/2006	1.64	6.90	4.20	38.98	25.03	69.62	105.65	5.276	1.370
2/28/2006	1.70	7.17	4.22	37.23	25.08	69.82	106.70	4.846	1.380
3/31/2006	1.66	7.38	4.44	37.38	25.13	70.05	107.86	4.745	1.390
4/30/2006	1.70	6.23	3.67	37.57	25.18	70.24	108.98	5.572	1.401
5/31/2006	1.18	5.25	4.45	38.80	25.22	70.40	110.18	6.932	1.414
6/30/2006	1.21	5.53	4.57	35.10	25.25	70.56	111.24	5.961	1.424
7/31/2006	1.19	5.44	4.56	37.72	25.29	70.73	112.41	6.507	1.436
8/31/2006	1.16	5.51	4.73	37.35	25.33	70.90	113.57	6.376	1.447
9/30/2006	1.23	5.46	4.45	38.09	25.36	71.07	114.71	6.541	1.458
10/31/2006	1.26	5.81	4.62	35.36	25.40	71.25	115.80	5.717	1.469
11/30/2006	1.28	5.83	4.55	35.54	25.44	71.42	116.87	5.716	1.479

Date	Oil Rate (CD) m3/d	Water Rate (CD) m3/d	Water Oil Ratio m3/m3	Water Inj Rate (CD) m3/d	Cum Oil Prod Km3	Cum Water Prod Km3	Cum Water Inj Km3	Voidage Replacement Ratio	Cum Voidage Replacement Ratio
12/31/2006	1.33	7.04	5.28	35.33	25.48	71.64	117.97	4.750	1.488
1/31/2007	1.38	7.46	5.40	38.69	25.52	71.87	119.16	4.915	1.499
2/28/2007	1.41	7.28	5.15	37.57	25.56	72.08	120.22	4.878	1.508
3/31/2007	1.40	7.36	5.27	36.16	25.61	72.30	121.34	4.647	1.517
4/30/2007	1.38	7.46	5.40	34.49	25.65	72.53	122.37	4.378	1.526
5/31/2007	1.37	7.27	5.32	34.15	25.69	72.75	123.43	4.446	1.534
6/30/2007	1.36	7.36	5.40	35.98	25.73	72.97	124.51	4.634	1.543
7/31/2007	1.34	7.24	5.40	34.98	25.77	73.20	125.59	4.576	1.552
8/31/2007	1.32	7.00	5.31	33.15	25.82	73.42	126.62	4.483	1.561
9/30/2007	1.31	7.25	5.55	33.80	25.85	73.63	127.64	4.421	1.569
10/31/2007	1.16	7.91	6.81	32.36	25.89	73.88	128.64	3.919	1.576
11/30/2007	1.18	7.93	6.74	33.90	25.93	74.12	129.66	4.091	1.584
12/31/2007	1.18	7.61	6.45	33.91	25.96	74.35	130.71	4.256	1.592
1/31/2008	1.20	7.41	6.19	34.19	26.00	74.58	131.77	4.401	1.600
2/29/2008	1.19	7.34	6.15	34.21	26.03	74.79	132.76	4.446	1.608
3/31/2008	1.16	7.53	6.47	33.87	26.07	75.03	133.81	4.298	1.615
4/30/2008	1.17	7.47	6.39	33.95	26.11	75.25	134.83	4.340	1.623
5/31/2008	1.19	7.40	6.21	33.75	26.14	75.48	135.87	4.353	1.631
6/30/2008	1.08	7.52	6.94	31.07	26.17	75.71	136.81	3.963	1.638
7/31/2008	0.74	6.86	9.28	33.58	26.20	75.92	137.85	4.744	1.646
8/31/2008	0.97	7.52	7.77	33.55	26.23	76.15	138.89	4.298	1.653
9/30/2008	1.00	7.61	7.61	33.83	26.26	76.38	139.90	4.278	1.661
10/31/2008	0.98	7.61	7.73	34.25	26.29	76.62	140.96	4.333	1.669
11/30/2008	1.02	7.51	7.39	34.17	26.32	76.84	141.99	4.371	1.676
12/31/2008	0.98	7.39	7.54	33.97	26.35	77.07	143.04	4.419	1.684
1/31/2009	0.96	7.45	7.75	34.15	26.38	77.30	144.10	4.412	1.691
2/28/2009	0.92	7.17	7.79	32.74	26.40	77.50	145.02	4.394	1.698
3/31/2009	0.98	7.48	7.61	34.15	26.43	77.74	146.08	4.390	1.706
4/30/2009	0.98	7.47	7.62	34.09	26.46	77.96	147.10	4.392	1.713
5/31/2009	0.97	7.45	7.65	34.06	26.49	78.19	148.15	4.399	1.720
6/30/2009	0.89	7.38	8.26	33.86	26.52	78.41	149.17	4.427	1.728
7/31/2009	0.89	7.42	8.37	33.82	26.55	78.64	150.22	4.399	1.735
8/31/2009	0.86	7.25	8.44	33.55	26.58	78.87	151.26	4.472	1.742
9/30/2009	0.85	7.22	8.46	33.51	26.60	79.08	152.26	4.485	1.749
10/31/2009	0.89	7.26	8.15	33.74	26.63	79.31	153.31	4.484	1.757
11/30/2009	0.88	7.02	7.95	33.82	26.66	79.52	154.32	4.642	1.764
12/31/2009	0.89	6.74	7.60	33.93	26.68	79.73	155.38	4.844	1.771
1/31/2010	0.87	6.87	7.89	33.96	26.71	79.94	156.43	4.762	1.779
2/28/2010	0.81	6.53	8.05	33.67	26.73	80.12	157.37	4.975	1.786
3/31/2010	0.90	7.06	7.82	33.67	26.76	80.34	158.42	4.593	1.793
4/30/2010	0.78	6.61	8.52	32.55	26.78	80.54	159.39	4.754	1.800
5/31/2010	0.81	6.39	7.92	33.52	26.81	80.74	160.43	5.055	1.807
6/30/2010	0.79	6.36	8.05	30.62	26.83	80.93	161.35	4.640	1.814
7/31/2010	0.78	6.65	8.49	33.06	26.86	81.14	162.38	4.799	1.821
8/31/2010	0.73	6.43	8.82	30.23	26.88	81.34	163.31	4.548	1.827
9/30/2010	0.78	6.95	8.95	33.80	26.90	81.54	164.33	4.703	1.834
10/31/2010	0.56	5.51	9.75	25.88	26.92	81.71	165.13	4.560	1.839
11/30/2010	0.76	7.14	9.44	34.42	26.94	81.93	166.16	4.670	1.846

Date	Oil Rate (CD) m3/d	Water Rate (CD) m3/d	Water Oil Ratio m3/m3	Water Inj Rate (CD) m3/d	Cum Oil Prod Km3	Cum Water Prod Km3	Cum Water Inj Km3	Voidage Replacemen t Ratio	Cum Voidage Replacemt Ratio
12/31/2010	0.76	6.48	8.47	34.54	26.97	82.13	167.23	5.151	1.854