

**NORTH EBOR UNIT NO. 2  
WATERFLOOD EOR PROJECT**

**ANNUAL REPORT FOR 2010**

**July 28, 2011**

**Tundra Oil and Gas Partnership**

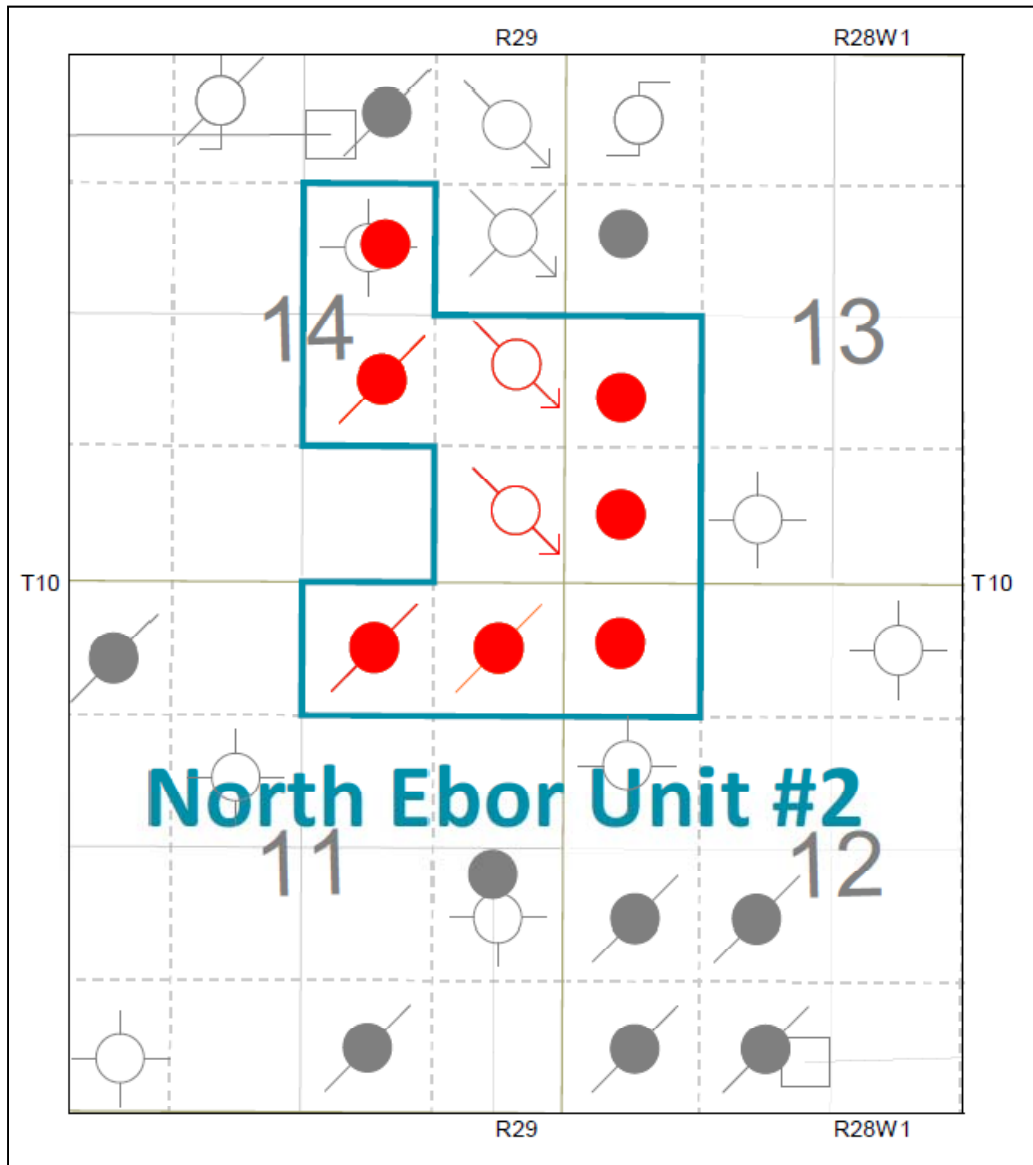
## Table of Contents

INTRODUCTION .....	3
DISCUSSION .....	4
Production History .....	4
Waterflood History .....	5
Waterflood EOR Operating Strategy and Performance .....	6
Water Source and Quality .....	6
Injection Wellhead Pressures .....	6
Reservoir Pressure .....	6
Well Servicing .....	6
Voidage Replacement .....	6
Waterflood Performance Discussion .....	7
List of Appendices .....	9
Appendix A: Well Name and Well Status	
Appendix B: Monthly Injection Wellhead Pressures Table and Plots	
Appendix C: Souris Hartney Unit No.1 Injection Pattern Summary	
Appendix D: Injector Pattern Production/Injection Rates, Cumulative and VRRs, plots and tables	

## INTRODUCTION

North Ebor Unit No. 2 Enhanced Oil Recovery (EOR) Waterflood Project was approved under Board Order No. PM 67 effective Oct. 1, 1991 with Tundra Oil and Gas Ltd. as Operator. The EOR project area contains 9 wells in 9 LSDs in Township 10, Range 29 W1 as shown in the figure below. Well list and well status is available in Appendix A.

**Figure 1: North Ebor Unit No. 2 Area Outline**



In accordance with Section 73 of the Manitoba Drilling and Production Regulation, Tundra hereby submits the 2010 Annual Progress Report for North Ebor Unit No. 2 as required by Board Order No. PM 67.

## **DISCUSSION**

### **Production History**

For the wells included in North Ebor unit No. 2, production started in January 1986 with 00/16-11-010-29W1/0 well. Oil production peaked at 26.5m<sup>3</sup>/d in June 1991. The water oil ratio (WOR) averaged 11.2m<sup>3</sup>/m<sup>3</sup> over the last half of 2010. The Unit was producing 2.77 m<sup>3</sup>/d of oil and 30.1 m<sup>3</sup>/d of water, in December 2010. The oil production rate, injection rate, and WOR during each month for each injection pattern and for whole project are presented in Appendix D. The rates and WOR are presented in Figure 2.

**Figure 2: North Ebor Unit No. 2 Production/Injection Rates and WOR vs. Time**

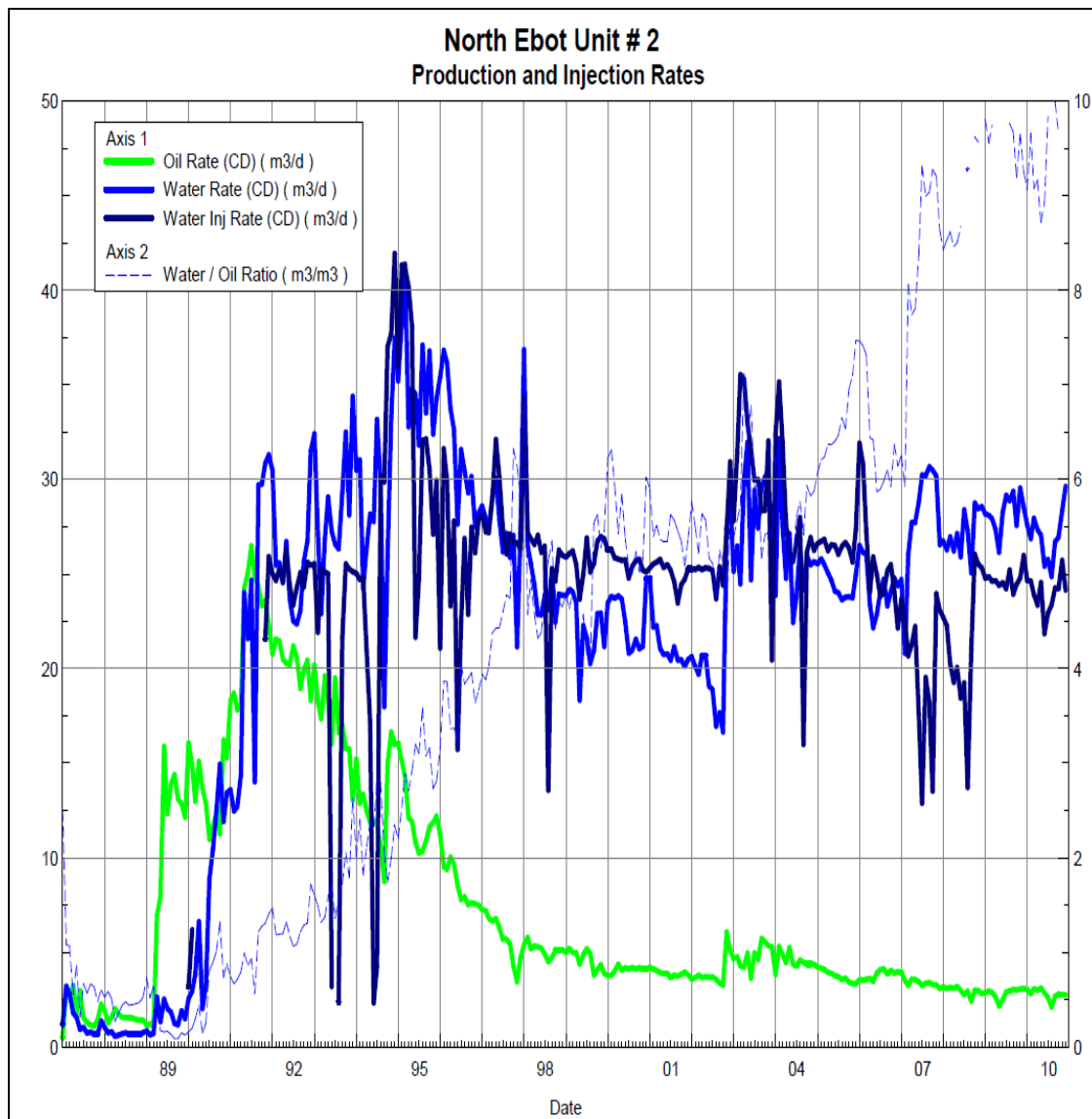
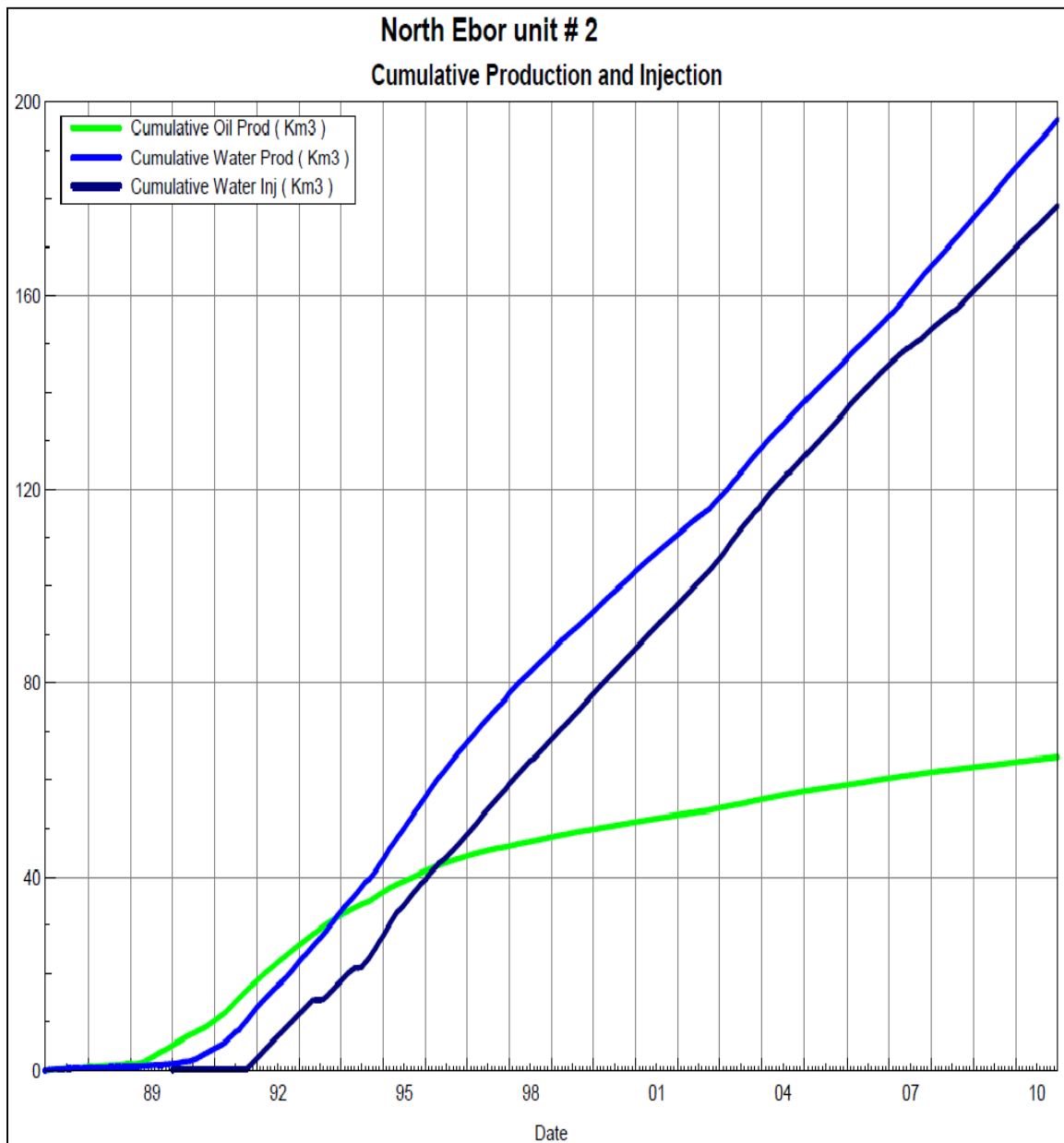


Figure 3 shows the cumulative production for North Ebor Unit No. 2 to the end of December 2010 as 64.7 E<sup>3</sup>m<sup>3</sup> of oil, and 196 E<sup>3</sup>m<sup>3</sup> of water. The cumulative water injected is over 179 E<sup>3</sup>m<sup>3</sup>. The cumulative volume of oil, and water produced and fluid

injected for each injection pattern and for the whole project for each injection well is presented in Appendix D.

**Figure 3: North Ebor Unit No. 2 Cumulative Oil, Water and Water Injected vs. Time**



### Waterflood History

As of December 2010 the Unit has 2 active vertical injectors. At year end 2010, North Ebor Unit No. 2 waterflood had 2 injector patterns in place, one injector on the north side 00/08-14-010-29W1/00, the other on the south side at 00/01-14-010-29W1/00. Water injection was started in the October 1991. An overall summary for each injector pattern is presented in Appendix C.

Any future revisions to the waterflood development or surveillance plan would be based on new production or performance response data, technical studies, or observed reservoir behavior and reserves recovery interpretations.

### **Waterflood EOR Operating Strategy and Performance**

#### **Water Source and Quality**

The injection water for North Ebor Unit No. 2 is sourced from the 00/13-13-010-29W1/00 well (Lodgepole formation). Injected fluid consists of water producing from the Lodgepole formation, from the unit and surrounding area. Water is filtered to 25 microns prior to re-injection.

#### **Injection Wellhead Pressures**

The average monthly wellhead injection pressure for each injection well is summarized in Appendix B, and shows all injection pressure since 2003. In 2010, Average injection pressure of injector 00/08-14-010-29W1/0 was 8632 kPag and 9640 kPag for injector 00/01-14-010-29W1/0.

#### **Reservoir Pressure**

No reservoir pressure measurements were taken at North Ebor Unit No. 2 in 2010.

#### **Well Servicing**

The following table summarizes the well servicing performed within North Ebor Unit No. 2 during 2010:

**Table 1: North Ebor Unit # 2 Well Servicing**

02/10-14-010-29W1	Pump and Rod Change	08/09/2010
-------------------	---------------------	------------

#### **Voidage Replacement**

Cumulative voidage for the North Ebor Unit No. 2 was 0.879 in December 2010. Calculations, plots and tables of the Voidage replacement ratio on a monthly and cumulative basis for each injection pattern and for the project area are presented in Appendix D.

#### **Waterflood Performance Discussion**

The original oil-in-place (OOIP) of the Unit is estimated at 412 E<sup>3</sup>m<sup>3</sup>. In 2010, recovery factor of the Unit is 15.7% based on 64,700 m<sup>3</sup> of cumulative oil recovered to date. The ultimate expected recoverable reserve based on decline analysis is 78,000 m<sup>3</sup> or an ultimate recovery factor of 18.9%.

The overall performance of this waterflood has been good as indicated an expected recovery factor of 18.9%, beyond the primary recovery factor. Waterflood response is

clearly evident in wells in the Unit. Trends in production are very stable and mature. No changes are anticipated in the future trends without changes to the waterflood itself.

Performance should improve with efforts to increase the instantaneous voidage above 1 so that eventually a cumulative voidage of unity is reached. In addition to increasing the water injection rate, the individual VRR plots clearly show that injection should be reduced in the 8-14 pattern, and increased in the 1-4 pattern to support the withdrawals in those areas. These changes will improve performance of the waterflood.

## **List of Appendices**

Appendix A: Well Name and Well Status

Appendix B: Monthly Injection Wellhead Pressures Table and Plots

Appendix C: Souris Hartney Unit No.1 Injection Pattern Summary

Appendix D: Injector Pattern Production/Injection Rates, Cumulative and VRRs

Plots and Tables for the following injectors:

00/01-14-010-29W1/0

00/08-14-010-29W1/0



## Appendix A

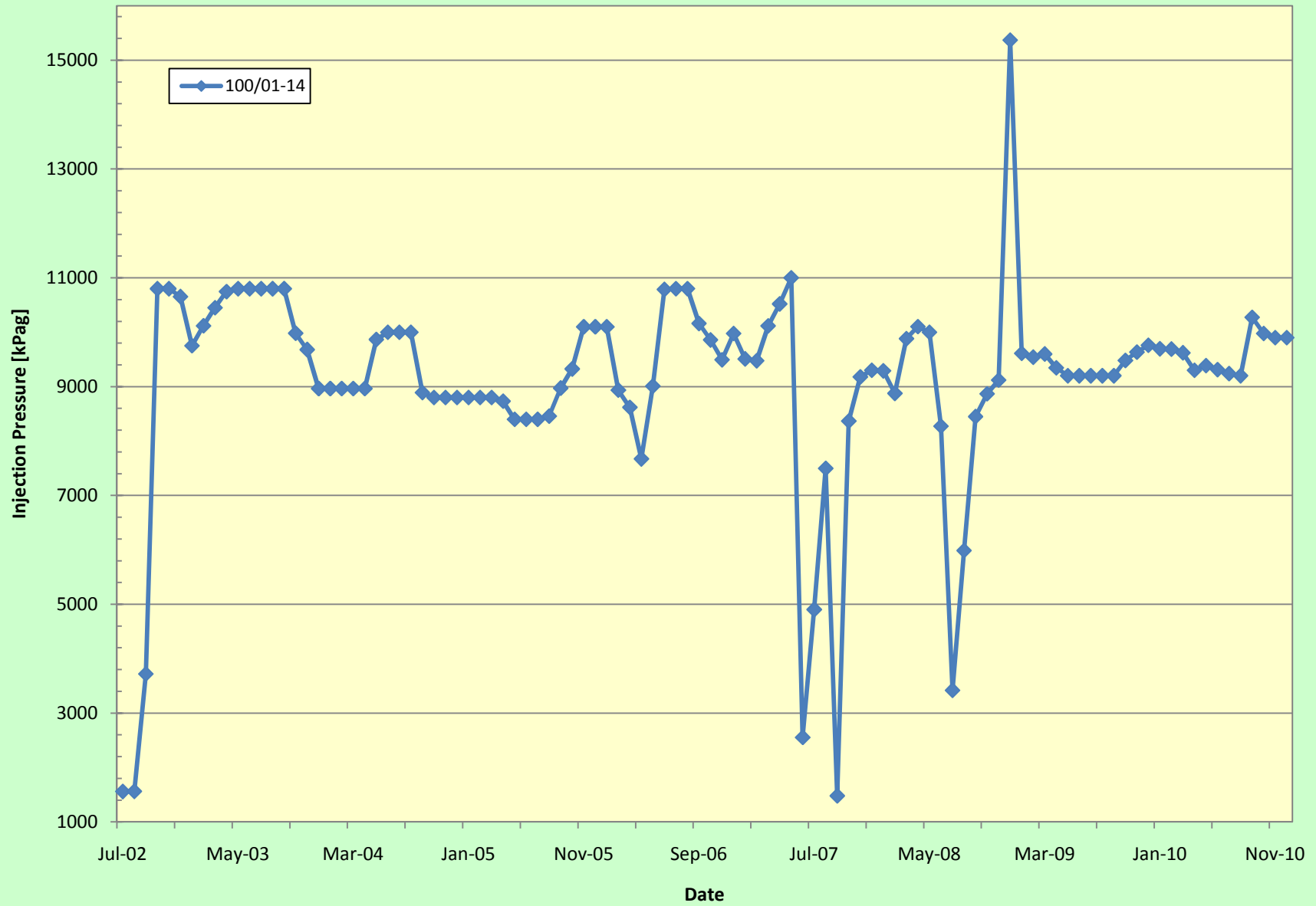
### UWI

100/15-11-010-29W1/00  
100/16-11-010-29W1/02  
100/13-12-010-29W1/00  
100/04-13-010-29W1/00  
100/05-13-010-29W1/00  
100/01-14-010-29W1/00  
100/07-14-010-29W1/00  
100/08-14-010-29W1/00  
102/10-14-010-29W1/00

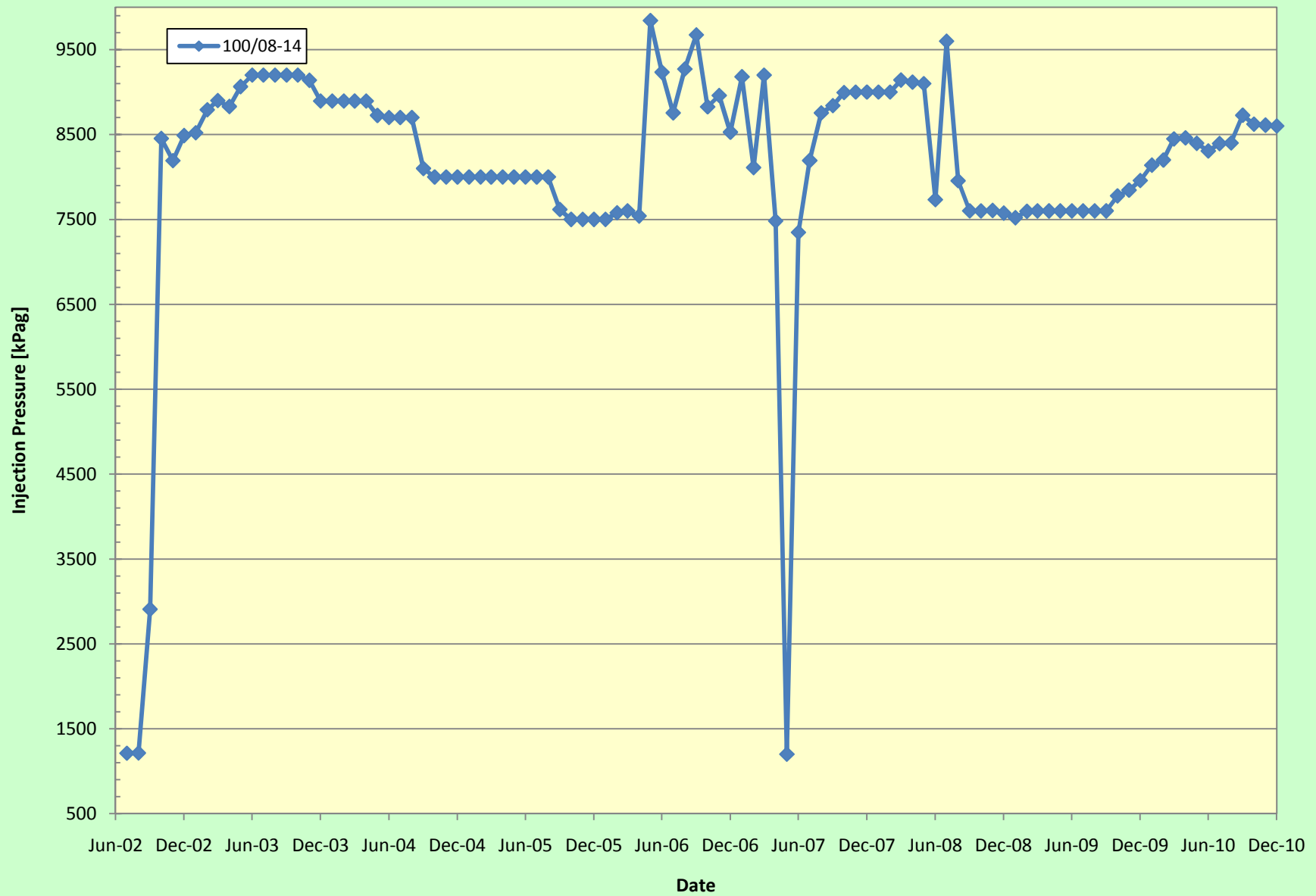
### Well Status

ABD Producer  
Capable of OIL Prod  
Capable of OIL Prod  
Capable of OIL Prod  
Capable of OIL Prod  
WTR Injection  
ABD Producer  
WTR Injection  
Capable of OIL Prod

# 100/01-14 Injection Pressures vs Time



# 100/08-14 Injection Pressures vs Time



## Appendix B

### Average Monthly Injection Pressure (kPag)

Month	Pattern	
	100/01-14	100/08-14
Jul-02	1559	1211
Aug-02	1562	1214
Sep-02	3720	2908
Oct-02	10800	8453
Nov-02	10800	8193
Dec-02	10655	8488
Jan-03	9752	8520
Feb-03	10118	8791
Mar-03	10450	8900
Apr-03	10747	8830
May-03	10800	9065
Jun-03	10800	9200
Jul-03	10800	9200
Aug-03	10800	9200
Sep-03	10800	9200
Oct-03	9981	9200
Nov-03	9681	9139
Dec-03	8965	8895
Jan-04	8965	8895
Feb-04	8965	8895
Mar-04	8965	8895
Apr-04	8965	8895
May-04	9866	8725
Jun-04	10000	8700
Jul-04	10000	8700
Aug-04	10000	8700
Sep-04	8890	8100
Oct-04	8800	8000
Nov-04	8800	8000
Dec-04	8800	8000
Jan-05	8800	8000
Feb-05	8800	8000
Mar-05	8800	8000
Apr-05	8733	8000
May-05	8400	8000
Jun-05	8400	8000
Jul-05	8400	8000
Aug-05	8458	8000
Sep-05	8973	7617
Oct-05	9326	7500
Nov-05	10100	7500
Dec-05	10100	7500

**Average Monthly Injection Pressure (kPag)**

<b>Month</b>	<b>Pattern</b>	
	<b>100/01-14</b>	<b>100/08-14</b>
<b>Jan-06</b>	10100	7500
<b>Feb-06</b>	8937	7579
<b>Mar-06</b>	8620	7600
<b>Apr-06</b>	7672	7540
<b>May-06</b>	9010	9842
<b>Jun-06</b>	10787	9233
<b>Jul-06</b>	10801	8755
<b>Aug-06</b>	10801	9271
<b>Sep-06</b>	10161	9673
<b>Oct-06</b>	9858	8826
<b>Nov-06</b>	9493	8960
<b>Dec-06</b>	9977	8527
<b>Jan-07</b>	9510	9181
<b>Feb-07</b>	9475	8111
<b>Mar-07</b>	10116	9200
<b>Apr-07</b>	10521	7480
<b>May-07</b>	11000	1200
<b>Jun-07</b>	2553	7347
<b>Jul-07</b>	4903	8194
<b>Aug-07</b>	7497	8755
<b>Sep-07</b>	1480	8840
<b>Oct-07</b>	8368	8994
<b>Nov-07</b>	9180	9000
<b>Dec-07</b>	9300	9000
<b>Jan-08</b>	9290	9000
<b>Feb-08</b>	8876	9000
<b>Mar-08</b>	9881	9142
<b>Apr-08</b>	10103	9117
<b>May-08</b>	10000	9100
<b>Jun-08</b>	8273	7733
<b>Jul-08</b>	3419	9600
<b>Aug-08</b>	5987	7955
<b>Sep-08</b>	8450	7600
<b>Oct-08</b>	8868	7600
<b>Nov-08</b>	9120	7606
<b>Dec-08</b>	15368	7574
<b>Jan-09</b>	9613	7520
<b>Feb-09</b>	9541	7596
<b>Mar-09</b>	9600	7600
<b>Apr-09</b>	9347	7600
<b>May-09</b>	9200	7600
<b>Jun-09</b>	9200	7600
<b>Jul-09</b>	9200	7600

**Average Monthly Injection Pressure (kPag)**

<b>Month</b>	<b>Pattern</b>	
	<b>100/01-14</b>	<b>100/08-14</b>
<b>Aug-09</b>	9200	7600
<b>Sep-09</b>	9200	7600
<b>Oct-09</b>	9482	7777
<b>Nov-09</b>	9634	7845
<b>Dec-09</b>	9760	7957
<b>Jan-10</b>	9696	8139
<b>Feb-10</b>	9690	8200
<b>Mar-10</b>	9622	8448
<b>Apr-10</b>	9300	8460
<b>May-10</b>	9387	8397
<b>Jun-10</b>	9313	8307
<b>Jul-10</b>	9239	8394
<b>Aug-10</b>	9200	8400
<b>Sep-10</b>	10273	8727
<b>Oct-10</b>	9977	8623
<b>Nov-10</b>	9900	8610
<b>Dec-10</b>	9900	8600

Pattern Name	Injector Location (010-29W)	Status	Supported Wells (010-29W1)	No. of Supported Wells	Allocation Factor	Pattern Prod Start Month	Inj Start Month	Oil Rate (m³/d)	Water Rate (m³/d)	WOR (m³/m³)	Water Injection (m³/d)	Cum Oil (E³m³)	Cum Water (E³m³)	Cum Inj Water (E³m³)	Monthly VRR	Cum VRR
00/01-14-010-29W1 Injector	00/01-14	WTR Injection	04-13, 13-12, 15-11, 16-11	4	0.5	Dec 1986	Jul 1994	1.5	24.3	16.73	14.9	39.1	164.1	84.6	592.0	0.48
00/08-14-010-29W1 Injector	00/08-14	WTR Injection	05-13, 07-14, 02/10-14	3	0.5	Feb 1987	Oct 1991	1.3	5.3	4.11	9.2	25.7	31.5	94.0	1.6	2.41

Oil Formation Vol. Factor : 1 m3/m3

## Completions Selected (9)

Water Formation Vol Factor : 1.00000 m3/m3

July 18, 2011

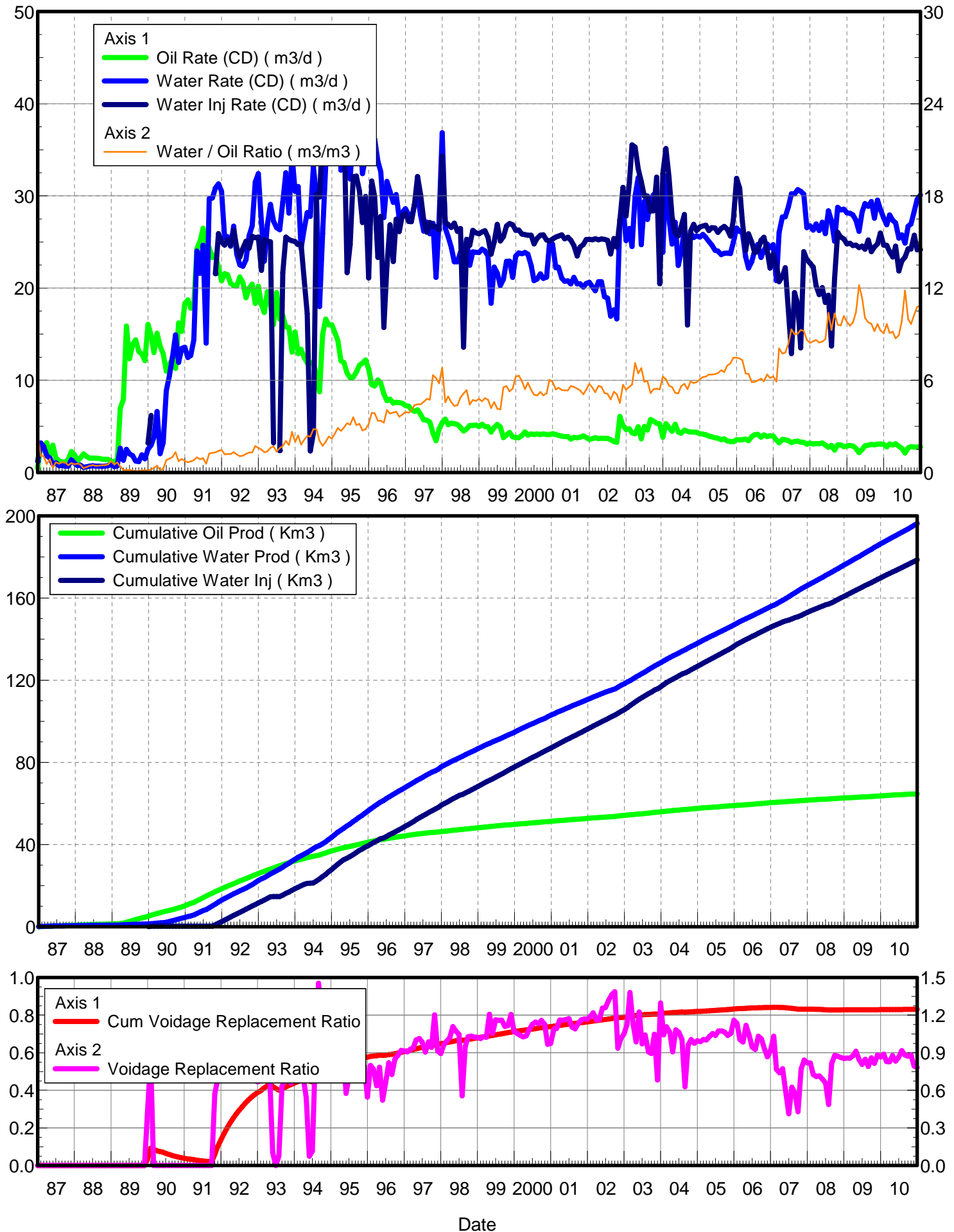
Water / Oil Ratio : 10.65 m3/m3

Operator: Tundra\_Oil\_and\_Gas\_Patnership

Oil Rate (CD) : 2.64 m3/d

Water Rate (CD) : 28.15 m3/d

Water Inj Rate (CD) : 23.76 m3/d





Date	Oil Rate (CD) m3/d	Water Rate (CD) m3/d	Water Oil Ratio m3/m3	Water Inj Rate (CD) m3/d	Cum Oil Prod Km3	Cum Water Prod Km3	Cum Water Inj Km3	Voidage Replacement Ratio	Cum Voidage Replacement Ratio
12/31/1986	0.48	1.21	2.50		0.01	0.04	0.00	0.000	0.000
1/31/1987	2.96	3.19	1.08		0.11	0.14	0.00	0.000	0.000
2/28/1987	2.64	2.82	1.07		0.18	0.22	0.00	0.000	0.000
3/31/1987	3.23	1.81	0.56		0.28	0.27	0.00	0.000	0.000
4/30/1987	1.81	1.57	0.86		0.34	0.32	0.00	0.000	0.000
5/31/1987	2.95	0.93	0.31		0.43	0.35	0.00	0.000	0.000
6/30/1987	1.54	1.03	0.67		0.47	0.38	0.00	0.000	0.000
7/31/1987	1.27	0.72	0.57		0.51	0.40	0.00	0.000	0.000
8/31/1987	1.15	0.77	0.66		0.55	0.42	0.00	0.000	0.000
9/30/1987	1.09	0.69	0.63		0.58	0.44	0.00	0.000	0.000
10/31/1987	1.43	0.68	0.48		0.63	0.47	0.00	0.000	0.000
11/30/1987	2.26	1.37	0.60		0.69	0.51	0.00	0.000	0.000
12/31/1987	1.94	1.02	0.53		0.75	0.54	0.00	0.000	0.000
1/31/1988	1.27	0.74	0.58		0.79	0.56	0.00	0.000	0.000
2/29/1988	1.56	0.80	0.51		0.84	0.58	0.00	0.000	0.000
3/31/1988	2.02	0.55	0.27		0.90	0.60	0.00	0.000	0.000
4/30/1988	1.73	0.61	0.35		0.95	0.62	0.00	0.000	0.000
5/31/1988	1.56	0.68	0.44		1.00	0.64	0.00	0.000	0.000
6/30/1988	1.54	0.73	0.48		1.05	0.66	0.00	0.000	0.000
7/31/1988	1.55	0.68	0.44		1.10	0.68	0.00	0.000	0.000
8/31/1988	1.52	0.68	0.45		1.14	0.71	0.00	0.000	0.000
9/30/1988	1.44	0.66	0.46		1.19	0.72	0.00	0.000	0.000
10/31/1988	1.42	0.67	0.47		1.23	0.75	0.00	0.000	0.000
11/30/1988	1.41	0.74	0.53		1.27	0.77	0.00	0.000	0.000
12/31/1988	1.14	0.83	0.73		1.31	0.79	0.00	0.000	0.000
1/31/1989	1.21	0.63	0.52		1.34	0.81	0.00	0.000	0.000
2/28/1989	1.11	0.71	0.64		1.38	0.83	0.00	0.000	0.000
3/31/1989	6.96	2.62	0.38		1.59	0.91	0.00	0.000	0.000
4/30/1989	7.93	1.33	0.17		1.83	0.95	0.00	0.000	0.000
5/31/1989	15.88	2.51	0.16		2.32	1.03	0.00	0.000	0.000
6/30/1989	12.34	2.02	0.16		2.69	1.09	0.00	0.000	0.000
7/31/1989	13.89	1.83	0.13		3.12	1.15	0.00	0.000	0.000
8/31/1989	14.39	1.24	0.09		3.57	1.19	0.00	0.000	0.000
9/30/1989	13.12	1.16	0.09		3.96	1.22	0.00	0.000	0.000
10/31/1989	12.85	1.90	0.15		4.36	1.28	0.00	0.000	0.000
11/30/1989	12.14	1.49	0.12		4.72	1.33	0.00	0.000	0.000
12/31/1989	16.06	2.54	0.16	3.20	5.22	1.40	0.10	0.445	0.034
1/31/1990	14.90	2.95	0.20	6.18	5.68	1.50	0.29	0.852	0.093
2/28/1990	13.00	3.84	0.30		6.05	1.60	0.29	0.000	0.087
3/31/1990	15.09	6.61	0.44		6.52	1.81	0.29	0.000	0.079
4/30/1990	13.70	2.03	0.15		6.93	1.87	0.29	0.000	0.075
5/31/1990	12.88	3.24	0.25		7.33	1.97	0.29	0.000	0.071
6/30/1990	10.98	8.86	0.81		7.66	2.24	0.29	0.000	0.065
7/31/1990	11.70	10.48	0.90		8.02	2.56	0.29	0.000	0.060
8/31/1990	12.34	12.49	1.01		8.40	2.95	0.29	0.000	0.054
9/30/1990	11.28	14.93	1.32		8.74	3.40	0.29	0.000	0.049
10/31/1990	16.22	11.93	0.74		9.24	3.77	0.29	0.000	0.045
11/30/1990	15.29	13.44	0.88		9.70	4.17	0.29	0.000	0.042

Date	Oil Rate (CD) m3/d	Water Rate (CD) m3/d	Water Oil Ratio m3/m3	Water Inj Rate (CD) m3/d	Cum Oil Prod Km3	Cum Water Prod Km3	Cum Water Inj Km3	Voidage Replacement Ratio	Cum Voidage Replacement Ratio
12/31/1990	18.34	13.59	0.74		10.27	4.59	0.29	0.000	0.038
1/31/1991	18.71	12.47	0.67		10.85	4.98	0.29	0.000	0.036
2/28/1991	17.81	12.69	0.71		11.35	5.33	0.29	0.000	0.034
3/31/1991	18.16	14.39	0.79		11.91	5.78	0.29	0.000	0.032
4/30/1991	24.25	24.02	0.99		12.64	6.50	0.29	0.000	0.029
5/31/1991	25.06	21.60	0.86		13.42	7.17	0.29	0.000	0.026
6/30/1991	26.49	24.66	0.93		14.21	7.91	0.29	0.000	0.024
7/31/1991	24.83	14.03	0.56		14.98	8.34	0.29	0.000	0.023
8/31/1991	24.37	29.71	1.22		15.74	9.26	0.29	0.000	0.021
9/30/1991	23.32	29.76	1.28		16.44	10.16	0.29	0.000	0.020
10/31/1991	23.62	30.86	1.31	21.56	17.17	11.11	0.96	0.572	0.060
11/30/1991	22.28	31.30	1.40	25.91	17.84	12.05	1.74	0.687	0.101
12/31/1991	20.77	30.50	1.47	25.02	18.48	13.00	2.51	0.685	0.137
1/31/1992	21.55	25.47	1.18	24.66	19.15	13.79	3.28	0.778	0.170
2/29/1992	21.46	25.58	1.19	25.23	19.77	14.53	4.01	0.794	0.198
3/31/1992	20.52	24.55	1.20	24.62	20.41	15.29	4.77	0.808	0.225
4/30/1992	20.26	26.71	1.32	26.27	21.01	16.09	5.56	0.807	0.251
5/31/1992	20.22	23.66	1.17	24.39	21.64	16.82	6.32	0.827	0.274
6/30/1992	21.20	22.52	1.06	23.37	22.28	17.50	7.02	0.816	0.293
7/31/1992	20.58	22.36	1.09	24.32	22.92	18.19	7.77	0.859	0.313
8/31/1992	18.96	23.07	1.22	25.07	23.50	18.91	8.55	0.878	0.333
9/30/1992	19.97	25.66	1.29	24.33	24.10	19.68	9.28	0.774	0.348
10/31/1992	20.43	26.75	1.31	25.62	24.74	20.51	10.07	0.784	0.364
11/30/1992	18.34	31.50	1.72	25.46	25.29	21.45	10.84	0.692	0.377
12/31/1992	20.19	32.42	1.61	25.54	25.91	22.46	11.63	0.668	0.388
1/31/1993	18.22	27.12	1.49	21.93	26.48	23.30	12.31	0.677	0.398
2/28/1993	17.36	22.91	1.32	25.24	26.96	23.94	13.01	0.904	0.410
3/31/1993	19.60	26.85	1.37	25.10	27.57	24.77	13.79	0.772	0.421
4/30/1993	18.18	29.07	1.60	25.01	28.12	25.64	14.54	0.729	0.431
5/31/1993	16.05	27.25	1.70	3.20	28.61	26.49	14.64	0.100	0.421
6/30/1993	19.50	26.56	1.36		29.20	27.29	14.64	0.000	0.410
7/31/1993	16.64	26.32	1.58	2.38	29.71	28.10	14.72	0.076	0.401
8/31/1993	17.02	29.32	1.72	21.65	30.24	29.01	15.39	0.632	0.408
9/30/1993	15.79	32.50	2.06	25.54	30.71	29.99	16.15	0.689	0.416
10/31/1993	15.73	28.14	1.79	25.26	31.20	30.86	16.94	0.773	0.425
11/30/1993	13.05	34.39	2.64	25.13	31.59	31.89	17.69	0.659	0.431
12/31/1993	15.22	30.51	2.00	25.04	32.07	32.84	18.47	0.717	0.439
1/31/1994	12.89	31.02	2.41	24.71	32.47	33.80	19.23	0.711	0.445
2/28/1994	13.36	24.27	1.82	24.81	32.84	34.48	19.93	0.882	0.453
3/31/1994	12.47	26.40	2.12	20.96	33.23	35.29	20.58	0.698	0.458
4/30/1994	11.88	28.18	2.37	17.22	33.58	36.14	21.09	0.545	0.460
5/31/1994	11.93	27.78	2.33	2.33	33.95	37.00	21.17	0.075	0.452
6/30/1994	11.80	33.17	2.81	4.24	34.31	38.00	21.29	0.116	0.444
7/31/1994	10.68	29.91	2.80	30.20	34.64	38.92	22.23	0.915	0.454
8/31/1994	8.75	18.00	2.06	29.87	34.91	39.48	23.15	1.455	0.467
9/30/1994	14.97	25.92	1.73	37.02	35.36	40.26	24.27	1.224	0.481
10/31/1994	16.65	33.30	2.00	37.72	35.87	41.29	25.43	0.990	0.492
11/30/1994	16.01	37.48	2.34	41.95	36.35	42.42	26.69	0.996	0.504

Date	Oil Rate (CD) m3/d	Water Rate (CD) m3/d	Water Oil Ratio m3/m3	Water Inj Rate (CD) m3/d	Cum Oil Prod Km3	Cum Water Prod Km3	Cum Water Inj Km3	Voidage Replacement Ratio	Cum Voidage Replacement Ratio
12/31/1994	16.02	35.23	2.20	36.00	36.85	43.51	27.81	0.903	0.513
1/31/1995	15.14	38.30	2.53	41.34	37.32	44.70	29.09	0.969	0.524
2/28/1995	14.31	41.39	2.89	41.25	37.72	45.85	30.25	0.906	0.533
3/31/1995	12.12	32.80	2.71	40.18	38.10	46.87	31.49	1.107	0.544
4/30/1995	11.90	34.77	2.92	38.09	38.45	47.91	32.63	0.997	0.553
5/31/1995	10.79	34.51	3.20	21.67	38.79	48.98	33.31	0.576	0.553
6/30/1995	10.25	31.83	3.10	24.72	39.10	49.94	34.05	0.711	0.556
7/31/1995	10.34	37.10	3.59	32.06	39.42	51.09	35.04	0.800	0.561
8/31/1995	10.89	33.53	3.08	32.14	39.75	52.13	36.04	0.876	0.566
9/30/1995	11.63	36.78	3.16	30.54	40.10	53.23	36.95	0.761	0.570
10/31/1995	11.86	32.41	2.73	27.12	40.47	54.24	37.79	0.757	0.573
11/30/1995	12.20	34.28	2.81	29.94	40.84	55.26	38.69	0.792	0.577
12/31/1995	11.22	35.41	3.15	21.10	41.18	56.36	39.35	0.546	0.576
1/31/1996	9.53	36.82	3.87	31.62	41.48	57.50	40.33	0.799	0.580
2/29/1996	9.37	36.18	3.86	29.93	41.75	58.55	41.20	0.770	0.583
3/31/1996	10.04	33.76	3.36	23.33	42.06	59.60	41.92	0.636	0.584
4/30/1996	9.68	32.63	3.37	27.79	42.35	60.58	42.75	0.784	0.587
5/31/1996	8.53	27.65	3.24	15.73	42.62	61.44	43.24	0.522	0.586
6/30/1996	7.79	31.57	4.05	22.44	42.85	62.38	43.91	0.663	0.587
7/31/1996	7.94	30.46	3.84	26.87	43.10	63.33	44.75	0.820	0.590
8/31/1996	7.52	29.31	3.90	22.88	43.33	64.24	45.45	0.727	0.592
9/30/1996	7.62	30.14	3.96	27.46	43.56	65.14	46.28	0.849	0.595
10/31/1996	7.56	27.51	3.64	26.14	43.79	65.99	47.09	0.880	0.599
11/30/1996	7.49	28.24	3.77	27.92	44.02	66.84	47.93	0.918	0.602
12/31/1996	7.25	28.61	3.94	28.09	44.24	67.73	48.80	0.915	0.606
1/31/1997	7.20	27.96	3.89	27.23	44.47	68.59	49.64	0.906	0.609
2/28/1997	6.80	27.39	4.03	27.20	44.66	69.36	50.40	0.926	0.613
3/31/1997	6.63	29.05	4.38	29.08	44.86	70.26	51.30	0.939	0.616
4/30/1997	6.79	30.08	4.43	32.11	45.07	71.16	52.27	1.002	0.621
5/31/1997	6.29	27.88	4.43	30.12	45.26	72.03	53.20	1.014	0.625
6/30/1997	5.69	26.18	4.60	27.38	45.43	72.81	54.02	0.984	0.629
7/31/1997	5.68	27.15	4.78	26.07	45.61	73.65	54.83	0.906	0.631
8/31/1997	5.45	25.89	4.75	27.11	45.78	74.46	55.67	0.987	0.635
9/30/1997	4.27	27.03	6.33	26.68	45.91	75.27	56.47	0.944	0.638
10/31/1997	3.45	21.16	6.14	26.65	46.01	75.92	57.30	1.203	0.642
11/30/1997	4.72	27.41	5.80	26.32	46.15	76.75	58.09	0.914	0.645
12/31/1997	5.41	36.85	6.82	34.32	46.32	77.89	59.15	0.893	0.648
1/31/1998	5.79	26.50	4.57	27.15	46.50	78.71	59.99	0.964	0.651
2/28/1998	5.18	25.57	4.94	26.89	46.65	79.43	60.75	0.993	0.654
3/31/1998	5.34	24.45	4.58	26.57	46.81	80.18	61.57	1.022	0.657
4/30/1998	5.29	22.86	4.32	27.04	46.97	80.87	62.38	1.109	0.660
5/31/1998	5.22	22.85	4.38	26.15	47.13	81.58	63.19	1.073	0.664
6/30/1998	4.90	23.88	4.88	26.47	47.28	82.29	63.99	1.046	0.667
7/31/1998	4.49	23.13	5.15	13.58	47.42	83.01	64.41	0.556	0.666
8/31/1998	4.72	25.27	5.35	25.26	47.56	83.79	65.19	0.948	0.668
9/30/1998	5.09	22.48	4.42	24.63	47.72	84.47	65.93	1.029	0.671
10/31/1998	5.08	23.94	4.71	26.27	47.87	85.21	66.74	1.034	0.674
11/30/1998	5.13	23.88	4.65	26.00	48.03	85.93	67.52	1.025	0.676

Date	Oil Rate (CD) m3/d	Water Rate (CD) m3/d	Water Oil Ratio m3/m3	Water Inj Rate (CD) m3/d	Cum Oil Prod Km3	Cum Water Prod Km3	Cum Water Inj Km3	Voidage Replacement Ratio	Cum Voidage Replacement Ratio
12/31/1998	4.99	23.86	4.78	25.90	48.18	86.67	68.33	1.023	0.679
1/31/1999	5.22	24.21	4.63	26.08	48.34	87.42	69.13	1.014	0.682
2/28/1999	4.97	24.05	4.83	26.22	48.48	88.09	69.87	1.029	0.684
3/31/1999	4.96	23.48	4.73	25.52	48.64	88.82	70.66	1.024	0.687
4/30/1999	4.38	18.35	4.19	23.68	48.77	89.37	71.37	1.207	0.690
5/31/1999	4.87	22.27	4.58	24.98	48.92	90.06	72.14	1.055	0.692
6/30/1999	5.21	21.62	4.15	26.90	49.08	90.71	72.95	1.163	0.695
7/31/1999	4.94	20.27	4.10	25.11	49.23	91.34	73.73	1.157	0.698
8/31/1999	3.78	20.96	5.54	25.56	49.35	91.99	74.52	1.159	0.701
9/30/1999	4.07	22.90	5.63	26.73	49.47	92.67	75.32	1.110	0.704
10/31/1999	4.34	22.93	5.28	26.99	49.60	93.38	76.16	1.116	0.707
11/30/1999	3.88	21.17	5.46	26.86	49.72	94.02	76.97	1.205	0.710
12/31/1999	3.77	23.48	6.23	26.27	49.84	94.75	77.78	1.069	0.713
1/31/2000	3.77	23.82	6.31	26.28	49.95	95.49	78.60	1.055	0.715
2/29/2000	4.00	23.73	5.94	25.86	50.07	96.17	79.35	1.039	0.717
3/31/2000	4.40	23.85	5.42	25.79	50.21	96.91	80.15	1.027	0.719
4/30/2000	4.05	23.68	5.84	25.73	50.33	97.62	80.92	1.035	0.721
5/31/2000	4.18	22.45	5.37	25.74	50.46	98.32	81.72	1.088	0.724
6/30/2000	4.11	20.81	5.06	24.79	50.58	98.94	82.46	1.127	0.726
7/31/2000	4.19	20.97	5.01	25.39	50.71	99.59	83.25	1.144	0.729
8/31/2000	4.11	21.55	5.24	25.72	50.84	100.26	84.04	1.131	0.731
9/30/2000	4.19	21.05	5.02	25.77	50.96	100.89	84.82	1.158	0.733
10/31/2000	4.12	21.18	5.15	25.21	51.09	101.55	85.60	1.127	0.736
11/30/2000	4.11	24.76	6.03	25.10	51.21	102.29	86.35	0.967	0.737
12/31/2000	4.20	24.77	5.90	25.32	51.34	103.06	87.14	0.974	0.739
1/31/2001	4.12	22.21	5.40	25.54	51.47	103.75	87.93	1.091	0.741
2/28/2001	4.03	22.26	5.52	25.63	51.58	104.37	88.64	1.094	0.743
3/31/2001	3.93	21.07	5.37	25.77	51.71	105.03	89.44	1.161	0.745
4/30/2001	3.88	20.74	5.35	25.35	51.82	105.65	90.20	1.159	0.748
5/31/2001	3.89	20.78	5.35	25.51	51.94	106.29	91.00	1.165	0.750
6/30/2001	3.63	20.45	5.63	25.20	52.05	106.91	91.75	1.172	0.752
7/31/2001	3.80	21.15	5.57	24.61	52.17	107.56	92.51	1.106	0.754
8/31/2001	3.75	20.45	5.46	23.48	52.29	108.20	93.24	1.090	0.756
9/30/2001	3.83	20.47	5.35	24.44	52.40	108.81	93.98	1.133	0.758
10/31/2001	3.95	20.11	5.09	24.72	52.52	109.43	94.74	1.163	0.760
11/30/2001	3.81	20.50	5.38	25.27	52.64	110.05	95.50	1.170	0.762
12/31/2001	3.57	20.62	5.77	25.28	52.75	110.69	96.28	1.167	0.764
1/31/2002	3.66	20.11	5.50	25.25	52.86	111.31	97.07	1.192	0.767
2/28/2002	3.77	19.71	5.22	25.34	52.97	111.86	97.78	1.218	0.769
3/31/2002	3.67	20.68	5.64	25.24	53.08	112.50	98.56	1.161	0.771
4/30/2002	3.71	20.69	5.57	25.33	53.19	113.12	99.32	1.164	0.773
5/31/2002	3.69	19.06	5.17	25.29	53.31	113.72	100.10	1.256	0.775
6/30/2002	3.70	18.90	5.11	25.18	53.42	114.28	100.86	1.261	0.777
7/31/2002	3.56	16.95	4.76	23.70	53.53	114.81	101.59	1.318	0.780
8/31/2002	3.36	17.65	5.26	25.37	53.63	115.36	102.38	1.362	0.782
9/30/2002	3.27	16.66	5.09	24.43	53.73	115.85	103.11	1.388	0.785
10/31/2002	6.07	27.45	4.52	27.35	53.92	116.71	103.96	0.937	0.786
11/30/2002	5.08	28.99	5.71	30.93	54.07	117.58	104.89	1.015	0.787

Date	Oil Rate (CD) m3/d	Water Rate (CD) m3/d	Water Oil Ratio m3/m3	Water Inj Rate (CD) m3/d	Cum Oil Prod Km3	Cum Water Prod Km3	Cum Water Inj Km3	Voidage Replacement Ratio	Cum Voidage Replacement Ratio
12/31/2002	4.67	25.15	5.39	27.83	54.22	118.36	105.75	1.050	0.789
1/31/2003	4.75	26.47	5.57	31.42	54.36	119.18	106.72	1.128	0.791
2/28/2003	4.28	24.50	5.72	35.54	54.48	119.86	107.72	1.381	0.794
3/31/2003	4.21	29.99	7.12	35.29	54.61	120.79	108.81	1.131	0.797
4/30/2003	4.95	31.96	6.46	32.96	54.76	121.75	109.80	0.987	0.798
5/31/2003	3.64	24.71	6.78	31.55	54.88	122.52	110.78	1.225	0.801
6/30/2003	4.98	29.41	5.91	29.97	55.02	123.40	111.68	0.971	0.802
7/31/2003	4.60	27.45	5.96	29.99	55.17	124.25	112.61	1.042	0.803
8/31/2003	5.73	29.62	5.17	28.35	55.34	125.17	113.49	0.906	0.804
9/30/2003	5.56	30.14	5.42	28.38	55.51	126.07	114.34	0.894	0.804
10/31/2003	5.34	29.04	5.44	32.03	55.68	126.97	115.33	1.047	0.806
11/30/2003	5.26	28.46	5.41	20.47	55.83	127.83	115.95	0.683	0.805
12/31/2003	3.83	23.88	6.23	32.41	55.95	128.57	116.95	1.297	0.808
1/31/2004	5.30	32.15	6.07	35.15	56.12	129.56	118.04	1.043	0.810
2/29/2004	4.87	27.55	5.65	32.04	56.26	130.36	118.97	1.107	0.811
3/31/2004	4.46	24.78	5.55	27.72	56.40	131.13	119.83	1.063	0.813
4/30/2004	5.24	27.13	5.18	25.97	56.55	131.94	120.61	0.907	0.813
5/31/2004	4.37	22.45	5.14	25.67	56.69	132.64	121.40	1.083	0.815
6/30/2004	4.25	23.84	5.61	26.66	56.82	133.35	122.20	1.064	0.816
7/31/2004	4.59	26.46	5.77	27.98	56.96	134.18	123.07	1.007	0.817
8/31/2004	4.46	24.19	5.42	16.00	57.10	134.92	123.57	0.628	0.816
9/30/2004	4.38	25.98	5.93	26.17	57.23	135.70	124.35	0.961	0.817
10/31/2004	4.37	25.49	5.83	26.92	57.37	136.49	125.19	1.006	0.818
11/30/2004	4.37	25.65	5.87	26.25	57.50	137.26	125.97	0.975	0.819
12/31/2004	4.21	25.53	6.07	26.61	57.63	138.06	126.80	0.995	0.820
1/31/2005	4.16	25.83	6.21	26.74	57.76	138.86	127.63	0.989	0.820
2/28/2005	4.09	25.50	6.24	26.83	57.87	139.57	128.38	1.006	0.821
3/31/2005	3.93	25.05	6.37	26.23	57.99	140.35	129.19	1.002	0.822
4/30/2005	3.87	24.67	6.37	26.55	58.11	141.09	129.99	1.029	0.823
5/31/2005	3.76	24.10	6.40	26.51	58.22	141.83	130.81	1.052	0.824
6/30/2005	3.71	24.02	6.47	26.05	58.34	142.55	131.59	1.038	0.825
7/31/2005	3.55	23.63	6.65	26.47	58.45	143.29	132.41	1.074	0.827
8/31/2005	3.64	23.78	6.53	26.68	58.56	144.02	133.24	1.075	0.828
9/30/2005	3.42	23.80	6.95	26.39	58.66	144.74	134.03	1.065	0.829
10/31/2005	3.35	23.75	7.10	25.64	58.77	145.47	134.83	1.038	0.830
11/30/2005	3.34	24.95	7.47	27.34	58.87	146.22	135.65	1.055	0.831
12/31/2005	3.55	26.51	7.47	31.91	58.98	147.04	136.64	1.159	0.833
1/31/2006	3.53	26.15	7.42	30.84	59.09	147.86	137.59	1.135	0.834
2/28/2006	3.56	26.07	7.31	27.26	59.19	148.59	138.36	1.006	0.835
3/31/2006	3.63	23.38	6.44	24.07	59.30	149.31	139.10	0.985	0.836
4/30/2006	3.45	22.16	6.42	25.89	59.40	149.97	139.88	1.118	0.837
5/31/2006	3.90	22.88	5.87	24.98	59.52	150.68	140.65	1.040	0.838
6/30/2006	4.08	24.05	5.89	23.83	59.64	151.41	141.37	0.944	0.838
7/31/2006	4.13	24.72	5.98	24.02	59.77	152.17	142.11	0.927	0.839
8/31/2006	3.82	23.32	6.10	25.19	59.89	152.89	142.89	1.031	0.839
9/30/2006	4.06	24.08	5.93	25.50	60.01	153.62	143.66	1.010	0.840
10/31/2006	3.89	24.78	6.37	24.05	60.13	154.39	144.40	0.929	0.841
11/30/2006	3.97	24.39	6.14	22.15	60.25	155.12	145.07	0.868	0.841

Date	Oil Rate (CD) m3/d	Water Rate (CD) m3/d	Water Oil Ratio m3/m3	Water Inj Rate (CD) m3/d	Cum Oil Prod Km3	Cum Water Prod Km3	Cum Water Inj Km3	Voidage Replacement Ratio	Cum Voidage Replacement Ratio
12/31/2006	3.95	24.71	6.25	23.68	60.38	155.88	145.80	0.916	0.841
1/31/2007	3.51	20.81	5.92	22.50	60.48	156.53	146.50	1.031	0.842
2/28/2007	3.23	26.04	8.07	20.69	60.57	157.26	147.08	0.767	0.842
3/31/2007	3.58	27.71	7.74	21.27	60.69	158.12	147.74	0.740	0.841
4/30/2007	3.55	27.73	7.80	22.21	60.79	158.95	148.40	0.772	0.841
5/31/2007	3.44	28.81	8.37	17.61	60.90	159.84	148.95	0.591	0.839
6/30/2007	3.25	30.23	9.31	12.89	61.00	160.75	149.34	0.413	0.837
7/31/2007	3.36	30.21	9.00	19.52	61.10	161.68	149.94	0.626	0.836
8/31/2007	3.39	30.67	9.04	18.22	61.21	162.64	150.51	0.576	0.835
9/30/2007	3.29	30.50	9.28	13.53	61.30	163.55	150.91	0.430	0.832
10/31/2007	3.28	30.18	9.21	23.96	61.41	164.49	151.66	0.770	0.832
11/30/2007	3.08	26.55	8.63	23.08	61.50	165.28	152.35	0.841	0.832
12/31/2007	3.17	26.75	8.43	22.71	61.60	166.11	153.05	0.821	0.832
1/31/2008	3.08	26.29	8.53	22.27	61.69	166.93	153.74	0.819	0.832
2/29/2008	3.13	26.96	8.62	20.26	61.78	167.71	154.33	0.727	0.832
3/31/2008	3.10	26.24	8.46	19.28	61.88	168.52	154.93	0.711	0.831
4/30/2008	3.19	27.13	8.51	20.05	61.97	169.34	155.53	0.715	0.831
5/31/2008	2.99	25.92	8.68	18.44	62.07	170.14	156.10	0.689	0.830
6/30/2008	2.73	28.39	10.39	19.23	62.15	170.99	156.68	0.659	0.829
7/31/2008	2.94	27.30	9.28	13.72	62.24	171.84	157.10	0.487	0.828
8/31/2008	2.42	25.08	10.35	21.05	62.32	172.61	157.76	0.816	0.828
9/30/2008	2.99	28.76	9.62	26.04	62.40	173.48	158.54	0.879	0.828
10/31/2008	2.97	28.46	9.57	25.53	62.50	174.36	159.33	0.871	0.828
11/30/2008	2.81	28.56	10.18	25.34	62.58	175.22	160.09	0.863	0.828
12/31/2008	2.87	28.17	9.80	24.78	62.67	176.09	160.86	0.855	0.828
1/31/2009	2.94	28.12	9.56	24.85	62.76	176.96	161.63	0.858	0.828
2/28/2009	2.86	27.93	9.75	24.61	62.84	177.74	162.32	0.856	0.828
3/31/2009	2.63	27.36	10.42	24.65	62.92	178.59	163.08	0.877	0.829
4/30/2009	2.15	26.16	12.19	24.40	62.99	179.38	163.81	0.911	0.829
5/31/2009	2.49	28.26	11.36	24.54	63.06	180.25	164.57	0.847	0.829
6/30/2009	2.90	29.16	10.07	24.22	63.15	181.13	165.30	0.807	0.829
7/31/2009	2.96	28.88	9.76	25.22	63.24	182.02	166.08	0.848	0.829
8/31/2009	3.04	29.37	9.68	23.94	63.34	182.93	166.82	0.791	0.829
9/30/2009	3.00	27.58	9.19	24.45	63.43	183.76	167.56	0.859	0.829
10/31/2009	3.06	29.54	9.66	24.79	63.52	184.68	168.33	0.815	0.829
11/30/2009	3.08	28.53	9.25	25.98	63.61	185.53	169.11	0.883	0.829
12/31/2009	3.05	27.61	9.07	24.66	63.71	186.39	169.87	0.866	0.829
1/31/2010	2.78	26.87	9.66	24.63	63.80	187.22	170.63	0.890	0.830
2/28/2010	3.08	27.95	9.08	23.92	63.88	188.00	171.30	0.830	0.830
3/31/2010	2.98	27.35	9.17	23.36	63.97	188.85	172.03	0.828	0.830
4/30/2010	3.10	27.06	8.72	24.55	64.07	189.66	172.76	0.878	0.830
5/31/2010	2.85	25.42	8.93	21.86	64.16	190.45	173.44	0.833	0.830
6/30/2010	2.62	25.78	9.84	22.92	64.23	191.22	174.13	0.864	0.830
7/31/2010	2.10	24.87	11.84	23.37	64.30	192.00	174.85	0.917	0.830
8/31/2010	2.67	26.71	9.99	24.25	64.38	192.82	175.61	0.882	0.831
9/30/2010	2.79	26.95	9.66	24.23	64.47	193.63	176.33	0.873	0.831
10/31/2010	2.76	28.36	10.28	25.72	64.55	194.51	177.13	0.882	0.831
11/30/2010	2.75	29.63	10.77	24.15	64.63	195.40	177.85	0.794	0.831

Date	Oil Rate (CD) m3/d	Water Rate (CD) m3/d	Water Oil Ratio m3/m3	Water Inj Rate (CD) m3/d	Cum Oil Prod Km3	Cum Water Prod Km3	Cum Water Inj Km3	Voidage Replacemen t Ratio	Cum Voidage Replacemt Ratio
12/31/2010	2.77	30.10	10.87	24.18	64.72	196.33	178.60	0.783	0.831

# Pattern: 00/01-14-010-29 Set: North Ebor Unit # 2

Oil Formation Vol. Factor : 1.05 m3/m3

Water Formation Vol Factor : 1.00 m3/m3

Water / Oil Ratio : 15.99 m3/m3

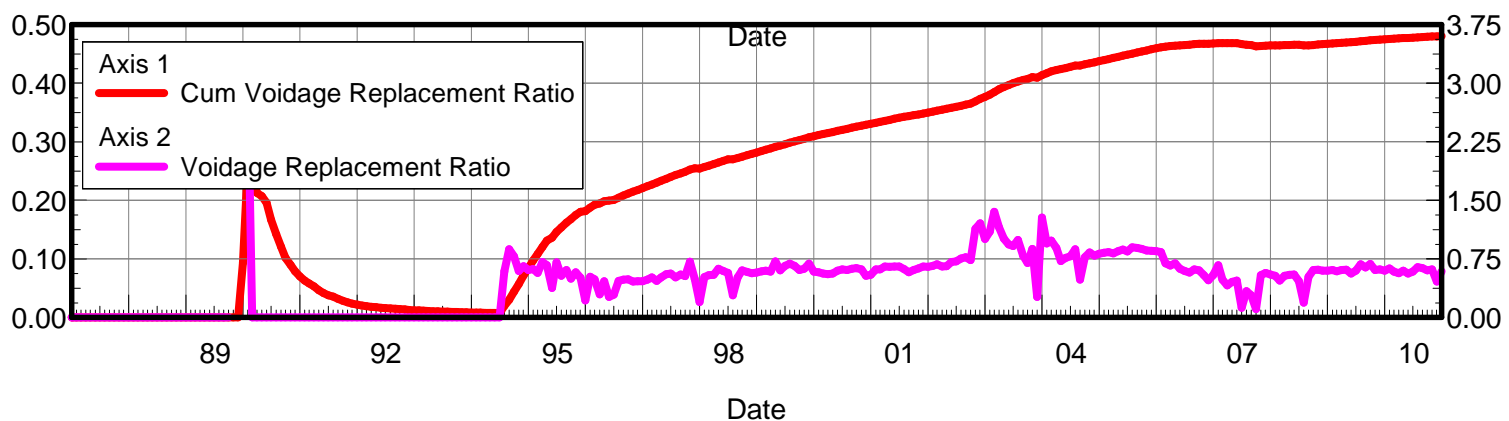
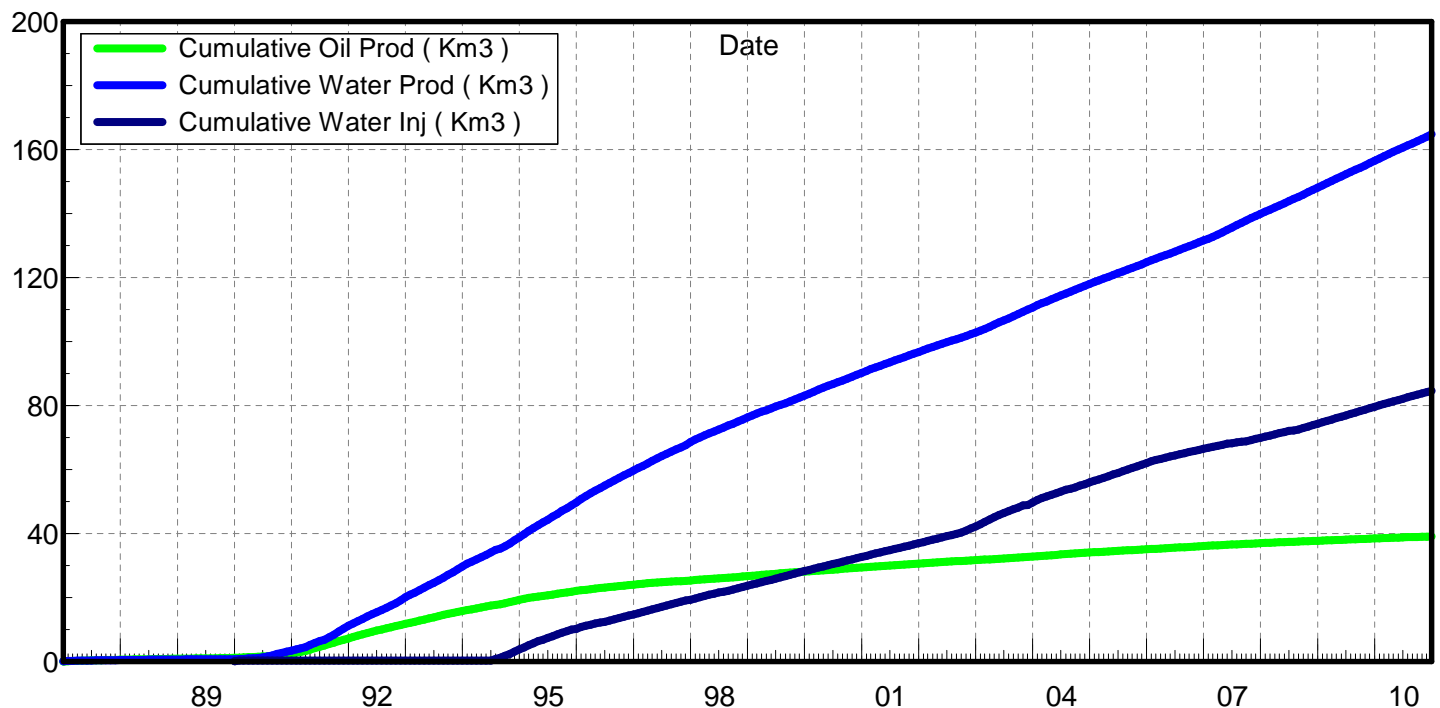
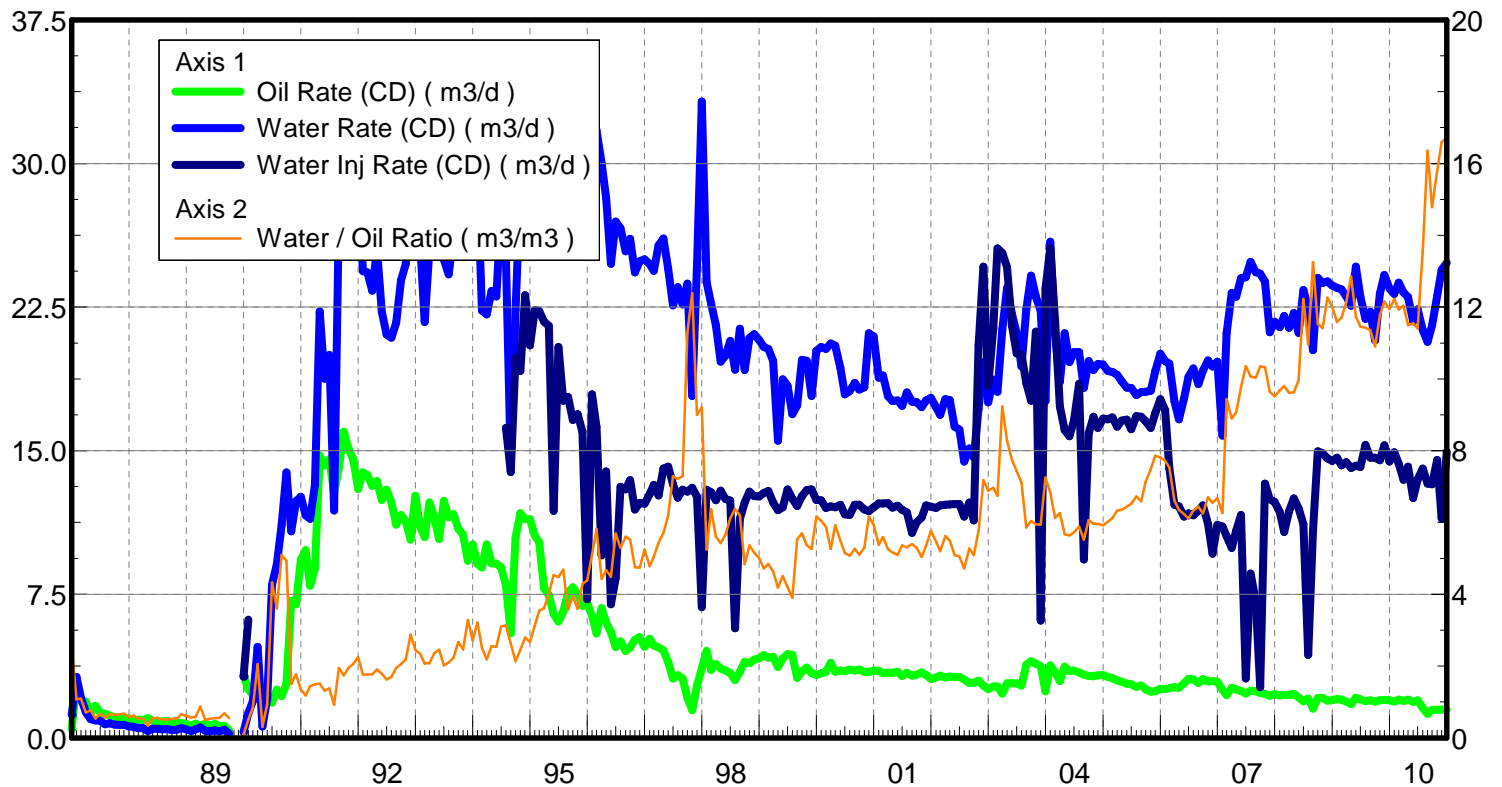
July 26, 2011

Operator: Tundra\_Oil\_and\_Gas\_Patnership

Oil Rate (CD) : 1.47 m3/d

Water Rate (CD) : 23.46 m3/d

Water Inj Rate (CD) : 14.15 m3/d





Date	Oil Rate (CD) m3/d	Water Rate (CD) m3/d	Water Oil Ratio m3/m3	Water Inj Rate (CD) m3/d	Cum Oil Prod Km3	Cum Water Prod Km3	Cum Water Inj Km3	Voidage Replacement Ratio	Cum Voidage Replacement Ratio
12/31/1986	0.48	1.21	2.50		0.01	0.04	0.00	0.000	0.000
1/31/1987	2.96	3.19	1.08		0.11	0.14	0.00	0.000	0.000
2/28/1987	1.91	2.09	1.09		0.16	0.19	0.00	0.000	0.000
3/31/1987	1.89	1.35	0.71		0.22	0.24	0.00	0.000	0.000
4/30/1987	1.28	0.99	0.77		0.26	0.27	0.00	0.000	0.000
5/31/1987	1.68	0.91	0.54		0.31	0.29	0.00	0.000	0.000
6/30/1987	1.32	0.89	0.67		0.35	0.32	0.00	0.000	0.000
7/31/1987	1.27	0.72	0.57		0.39	0.34	0.00	0.000	0.000
8/31/1987	1.15	0.77	0.66		0.42	0.37	0.00	0.000	0.000
9/30/1987	1.09	0.69	0.63		0.46	0.39	0.00	0.000	0.000
10/31/1987	1.04	0.68	0.66		0.49	0.41	0.00	0.000	0.000
11/30/1987	0.99	0.67	0.68		0.52	0.43	0.00	0.000	0.000
12/31/1987	1.01	0.59	0.59		0.55	0.45	0.00	0.000	0.000
1/31/1988	0.94	0.58	0.62		0.58	0.47	0.00	0.000	0.000
2/29/1988	0.94	0.50	0.54		0.61	0.48	0.00	0.000	0.000
3/31/1988	0.95	0.51	0.54		0.64	0.50	0.00	0.000	0.000
4/30/1988	1.03	0.35	0.34		0.67	0.51	0.00	0.000	0.000
5/31/1988	0.90	0.48	0.54		0.69	0.52	0.00	0.000	0.000
6/30/1988	0.85	0.47	0.56		0.72	0.54	0.00	0.000	0.000
7/31/1988	0.86	0.44	0.52		0.75	0.55	0.00	0.000	0.000
8/31/1988	0.88	0.45	0.52		0.77	0.56	0.00	0.000	0.000
9/30/1988	0.78	0.41	0.53		0.80	0.58	0.00	0.000	0.000
10/31/1988	0.80	0.43	0.54		0.82	0.59	0.00	0.000	0.000
11/30/1988	0.78	0.51	0.65		0.85	0.61	0.00	0.000	0.000
12/31/1988	0.74	0.45	0.61		0.87	0.62	0.00	0.000	0.000
1/31/1989	0.63	0.35	0.57		0.89	0.63	0.00	0.000	0.000
2/28/1989	0.75	0.44	0.59		0.91	0.64	0.00	0.000	0.000
3/31/1989	0.63	0.55	0.87		0.93	0.66	0.00	0.000	0.000
4/30/1989	0.75	0.38	0.50		0.95	0.67	0.00	0.000	0.000
5/31/1989	0.65	0.34	0.53		0.97	0.68	0.00	0.000	0.000
6/30/1989	0.72	0.40	0.55		0.99	0.69	0.00	0.000	0.000
7/31/1989	0.63	0.35	0.55		1.01	0.70	0.00	0.000	0.000
8/31/1989	0.64	0.43	0.68		1.03	0.72	0.00	0.000	0.000
9/30/1989	0.40	0.22	0.55		1.04	0.72	0.00	0.000	0.000
12/31/1989	3.25	0.30	0.09	3.20	1.14	0.73	0.10	2.569	0.093
1/31/1990	2.53	1.30	0.51	6.18	1.22	0.77	0.29	3.043	0.258
2/28/1990	2.26	1.91	0.84		1.29	0.83	0.29	0.000	0.243
3/31/1990	2.32	4.76	2.06		1.36	0.97	0.29	0.000	0.213
4/30/1990	1.91	0.59	0.31		1.42	0.99	0.29	0.000	0.207
5/31/1990	2.17	2.05	0.94		1.48	1.06	0.29	0.000	0.196
6/30/1990	1.85	8.01	4.33		1.54	1.30	0.29	0.000	0.167
7/31/1990	2.51	9.06	3.61		1.62	1.58	0.29	0.000	0.142
8/31/1990	2.18	11.13	5.10		1.68	1.92	0.29	0.000	0.121
9/30/1990	2.81	13.87	4.93		1.77	2.34	0.29	0.000	0.102
10/31/1990	7.17	10.79	1.50		1.99	2.67	0.29	0.000	0.090
11/30/1990	6.98	12.36	1.77		2.20	3.04	0.29	0.000	0.079
12/31/1990	9.32	12.59	1.35		2.49	3.43	0.29	0.000	0.070
1/31/1991	9.80	11.62	1.19		2.79	3.79	0.29	0.000	0.063

Date	Oil Rate (CD) m3/d	Water Rate (CD) m3/d	Water Oil Ratio m3/m3	Water Inj Rate (CD) m3/d	Cum Oil Prod Km3	Cum Water Prod Km3	Cum Water Inj Km3	Voidage Replacement Ratio	Cum Voidage Replacement Ratio
2/28/1991	7.94	11.44	1.44		3.01	4.11	0.29	0.000	0.058
3/31/1991	8.85	13.21	1.49		3.29	4.52	0.29	0.000	0.053
4/30/1991	14.76	22.28	1.51		3.73	5.19	0.29	0.000	0.046
5/31/1991	14.23	18.75	1.32		4.17	5.77	0.29	0.000	0.042
6/30/1991	14.54	20.01	1.38		4.61	6.37	0.29	0.000	0.038
7/31/1991	12.82	11.88	0.93		5.01	6.74	0.29	0.000	0.036
8/31/1991	14.12	27.47	1.95		5.44	7.59	0.29	0.000	0.032
9/30/1991	15.99	27.94	1.75		5.92	8.43	0.29	0.000	0.029
10/31/1991	15.10	29.38	1.95		6.39	9.34	0.29	0.000	0.026
11/30/1991	14.54	30.01	2.06		6.83	10.24	0.29	0.000	0.024
12/31/1991	13.00	29.29	2.25		7.23	11.15	0.29	0.000	0.022
1/31/1992	13.86	24.38	1.76		7.66	11.91	0.29	0.000	0.021
2/29/1992	13.73	24.31	1.77		8.06	12.61	0.29	0.000	0.019
3/31/1992	13.16	23.35	1.77		8.47	13.34	0.29	0.000	0.018
4/30/1992	13.41	25.52	1.90		8.87	14.10	0.29	0.000	0.017
5/31/1992	12.43	22.25	1.79		9.25	14.79	0.29	0.000	0.017
6/30/1992	12.96	21.06	1.63		9.64	15.42	0.29	0.000	0.016
7/31/1992	12.31	20.89	1.70		10.02	16.07	0.29	0.000	0.015
8/31/1992	11.14	21.68	1.95		10.37	16.74	0.29	0.000	0.015
9/30/1992	11.64	23.89	2.05		10.72	17.46	0.29	0.000	0.014
10/31/1992	11.31	24.77	2.19		11.07	18.23	0.29	0.000	0.014
11/30/1992	10.35	29.75	2.87		11.38	19.12	0.29	0.000	0.013
12/31/1992	12.65	30.93	2.45		11.77	20.08	0.29	0.000	0.012
1/31/1993	11.03	25.82	2.34		12.11	20.88	0.29	0.000	0.012
2/28/1993	10.49	21.72	2.07		12.41	21.49	0.29	0.000	0.012
3/31/1993	12.29	25.56	2.08		12.79	22.28	0.29	0.000	0.011
4/30/1993	11.50	27.18	2.36		13.13	23.10	0.29	0.000	0.011
5/31/1993	10.38	25.54	2.46		13.46	23.89	0.29	0.000	0.010
6/30/1993	12.38	24.98	2.02		13.83	24.64	0.29	0.000	0.010
7/31/1993	11.53	24.21	2.10		14.18	25.39	0.29	0.000	0.010
8/31/1993	11.68	26.14	2.24		14.55	26.20	0.29	0.000	0.010
9/30/1993	10.92	29.13	2.67		14.87	27.07	0.29	0.000	0.009
10/31/1993	10.61	26.16	2.47		15.20	27.88	0.29	0.000	0.009
11/30/1993	9.25	30.38	3.28		15.48	28.79	0.29	0.000	0.009
12/31/1993	10.10	27.41	2.71		15.79	29.64	0.29	0.000	0.009
1/31/1994	9.08	29.16	3.21		16.08	30.55	0.29	0.000	0.008
2/28/1994	8.90	22.32	2.51		16.32	31.17	0.29	0.000	0.008
3/31/1994	10.11	22.13	2.19		16.64	31.86	0.29	0.000	0.008
4/30/1994	9.13	23.34	2.56		16.91	32.56	0.29	0.000	0.008
5/31/1994	9.10	23.06	2.53		17.19	33.27	0.29	0.000	0.008
6/30/1994	8.90	27.66	3.11		17.46	34.10	0.29	0.000	0.007
7/31/1994	7.97	25.00	3.14	16.19	17.71	34.88	0.79	0.593	0.020
8/31/1994	5.45	14.30	2.62	13.87	17.88	35.32	1.22	0.874	0.030
9/30/1994	10.46	22.34	2.13	19.87	18.19	35.99	1.82	0.783	0.044
10/31/1994	11.75	28.86	2.46	19.16	18.56	36.89	2.41	0.594	0.057
11/30/1994	11.43	31.94	2.79	23.12	18.90	37.84	3.11	0.656	0.072
12/31/1994	11.42	30.47	2.67	20.50	19.25	38.79	3.74	0.607	0.084
1/31/1995	10.57	33.03	3.12	22.35	19.58	39.81	4.43	0.619	0.098

Date	Oil Rate (CD) m3/d	Water Rate (CD) m3/d	Water Oil Ratio m3/m3	Water Inj Rate (CD) m3/d	Cum Oil Prod Km3	Cum Water Prod Km3	Cum Water Inj Km3	Voidage Replacement Ratio	Cum Voidage Replacement Ratio
2/28/1995	10.21	36.19	3.54	22.29	19.87	40.83	5.06	0.569	0.109
3/31/1995	7.82	28.28	3.62	21.73	20.11	41.70	5.73	0.711	0.121
4/30/1995	7.47	29.97	4.01	21.52	20.33	42.60	6.38	0.670	0.132
5/31/1995	6.48	29.35	4.53	11.85	20.53	43.51	6.75	0.380	0.136
6/30/1995	6.07	27.21	4.48	20.42	20.72	44.33	7.36	0.705	0.146
7/31/1995	6.60	30.96	4.69	17.62	20.92	45.29	7.90	0.536	0.154
8/31/1995	7.58	27.07	3.57	17.82	21.15	46.13	8.46	0.609	0.162
9/30/1995	7.86	30.99	3.94	16.60	21.39	47.06	8.95	0.499	0.168
10/31/1995	7.51	26.98	3.59	16.91	21.62	47.89	9.48	0.580	0.175
11/30/1995	6.89	29.52	4.28	15.99	21.83	48.78	9.96	0.508	0.181
12/31/1995	7.05	30.99	4.40	7.25	22.05	49.74	10.18	0.220	0.181
1/31/1996	6.38	32.54	5.10	17.94	22.25	50.75	10.74	0.522	0.188
2/29/1996	5.46	31.74	5.81	16.24	22.40	51.67	11.21	0.488	0.193
3/31/1996	6.78	30.02	4.43	9.53	22.61	52.60	11.51	0.298	0.195
4/30/1996	6.03	28.21	4.68	13.92	22.80	53.45	11.92	0.465	0.199
5/31/1996	5.52	24.76	4.49	6.97	22.97	54.21	12.14	0.265	0.199
6/30/1996	4.74	26.98	5.70	8.34	23.11	55.02	12.39	0.294	0.201
7/31/1996	5.03	26.61	5.29	13.12	23.27	55.85	12.80	0.467	0.204
8/31/1996	4.54	25.42	5.60	12.99	23.41	56.64	13.20	0.486	0.208
9/30/1996	4.72	26.06	5.52	13.47	23.55	57.42	13.60	0.491	0.212
10/31/1996	5.12	24.32	4.75	11.92	23.71	58.17	13.97	0.462	0.215
11/30/1996	5.25	24.90	4.74	12.28	23.86	58.92	14.34	0.465	0.218
12/31/1996	4.76	25.00	5.25	12.22	24.01	59.69	14.72	0.463	0.221
1/31/1997	5.17	24.74	4.79	12.73	24.17	60.46	15.11	0.485	0.224
2/28/1997	4.83	24.39	5.05	13.21	24.31	61.14	15.48	0.512	0.227
3/31/1997	4.73	25.73	5.44	12.66	24.45	61.94	15.88	0.467	0.230
4/30/1997	4.57	26.08	5.71	14.07	24.59	62.72	16.30	0.514	0.233
5/31/1997	3.95	24.49	6.20	14.17	24.71	63.48	16.74	0.553	0.237
6/30/1997	3.10	22.58	7.28	13.25	24.81	64.16	17.14	0.564	0.240
7/31/1997	3.26	23.55	7.22	12.55	24.91	64.89	17.53	0.512	0.243
8/31/1997	3.11	22.65	7.29	12.96	25.00	65.59	17.93	0.550	0.246
9/30/1997	2.10	23.73	11.30	12.86	25.07	66.30	18.31	0.528	0.249
10/31/1997	1.44	17.85	12.38	13.06	25.11	66.86	18.72	0.715	0.253
11/30/1997	2.74	24.66	9.00	12.59	25.19	67.60	19.10	0.495	0.255
12/31/1997	3.61	33.24	9.20	6.84	25.30	68.63	19.31	0.199	0.254
1/31/1998	4.54	23.81	5.25	12.95	25.45	69.37	19.71	0.516	0.257
2/28/1998	3.56	22.70	6.37	12.83	25.55	70.00	20.07	0.541	0.259
3/31/1998	3.85	21.55	5.60	12.41	25.66	70.67	20.45	0.548	0.262
4/30/1998	3.62	19.65	5.43	12.91	25.77	71.26	20.84	0.624	0.265
5/31/1998	3.52	19.97	5.67	12.47	25.88	71.88	21.23	0.594	0.267
6/30/1998	3.39	20.74	6.12	12.40	25.98	72.50	21.60	0.571	0.270
7/31/1998	3.02	19.23	6.37	5.72	26.08	73.10	21.78	0.285	0.270
8/31/1998	3.45	21.37	6.20	11.45	26.18	73.76	22.13	0.512	0.272
9/30/1998	3.97	19.21	4.84	12.30	26.30	74.34	22.50	0.604	0.275
10/31/1998	3.90	20.89	5.36	12.85	26.42	74.98	22.90	0.584	0.277
11/30/1998	4.09	21.09	5.16	12.63	26.55	75.62	23.28	0.567	0.279
12/31/1998	4.15	20.79	5.01	12.61	26.68	76.26	23.67	0.573	0.282
1/31/1999	4.33	20.42	4.72	12.79	26.81	76.89	24.06	0.590	0.284

Date	Oil Rate (CD) m3/d	Water Rate (CD) m3/d	Water Oil Ratio m3/m3	Water Inj Rate (CD) m3/d	Cum Oil Prod Km3	Cum Water Prod Km3	Cum Water Inj Km3	Voidage Replacement Ratio	Cum Voidage Replacement Ratio
2/28/1999	4.19	20.31	4.84	12.90	26.93	77.46	24.43	0.599	0.287
3/31/1999	4.25	19.68	4.64	12.30	27.06	78.07	24.81	0.588	0.289
4/30/1999	3.71	15.52	4.18	11.90	27.17	78.54	25.16	0.717	0.291
5/31/1999	4.15	18.72	4.51	12.05	27.30	79.12	25.54	0.605	0.293
6/30/1999	4.38	18.39	4.20	12.98	27.43	79.67	25.93	0.661	0.296
7/31/1999	4.34	16.91	3.90	12.50	27.56	80.19	26.31	0.688	0.298
8/31/1999	3.14	17.36	5.53	12.11	27.66	80.73	26.69	0.663	0.301
9/30/1999	3.46	19.75	5.70	12.63	27.77	81.32	27.07	0.609	0.303
10/31/1999	3.67	19.71	5.37	12.95	27.88	81.94	27.47	0.624	0.305
11/30/1999	3.39	17.87	5.27	12.98	27.98	82.47	27.86	0.688	0.308
12/31/1999	3.28	20.22	6.16	12.44	28.08	83.10	28.25	0.587	0.310
1/31/2000	3.37	20.42	6.05	12.42	28.19	83.73	28.63	0.580	0.312
2/29/2000	3.46	20.32	5.88	12.01	28.29	84.32	28.98	0.563	0.313
3/31/2000	3.91	20.59	5.26	12.09	28.41	84.96	29.35	0.556	0.315
4/30/2000	3.46	20.48	5.93	12.05	28.51	85.57	29.71	0.561	0.317
5/31/2000	3.52	19.34	5.49	12.18	28.62	86.17	30.09	0.598	0.319
6/30/2000	3.49	17.94	5.15	11.68	28.73	86.71	30.44	0.616	0.320
7/31/2000	3.57	18.11	5.08	11.64	28.84	87.27	30.80	0.608	0.322
8/31/2000	3.52	18.54	5.26	12.18	28.95	87.85	31.18	0.623	0.324
9/30/2000	3.57	18.19	5.10	12.17	29.05	88.39	31.55	0.633	0.326
10/31/2000	3.45	18.31	5.30	11.93	29.16	88.96	31.92	0.618	0.328
11/30/2000	3.43	21.14	6.16	11.84	29.26	89.59	32.27	0.535	0.329
12/31/2000	3.53	20.96	5.95	12.04	29.37	90.24	32.64	0.548	0.331
1/31/2001	3.50	18.81	5.38	12.25	29.48	90.83	33.02	0.618	0.332
2/28/2001	3.39	18.93	5.59	12.24	29.58	91.36	33.37	0.615	0.334
3/31/2001	3.40	17.84	5.25	12.26	29.68	91.91	33.75	0.651	0.336
4/30/2001	3.40	17.59	5.17	12.02	29.78	92.44	34.11	0.647	0.338
5/31/2001	3.46	17.63	5.10	12.13	29.89	92.98	34.48	0.651	0.339
6/30/2001	3.23	17.35	5.37	11.91	29.99	93.51	34.84	0.652	0.341
7/31/2001	3.40	18.05	5.31	11.78	30.09	94.06	35.21	0.619	0.343
8/31/2001	3.25	17.56	5.40	10.71	30.19	94.61	35.54	0.579	0.344
9/30/2001	3.31	17.54	5.30	11.26	30.29	95.14	35.88	0.609	0.345
10/31/2001	3.43	17.27	5.04	11.51	30.40	95.67	36.23	0.630	0.347
11/30/2001	3.29	17.63	5.36	12.14	30.50	96.20	36.60	0.653	0.348
12/31/2001	3.08	17.76	5.77	12.08	30.59	96.75	36.97	0.648	0.350
1/31/2002	3.16	17.28	5.47	12.01	30.69	97.29	37.34	0.660	0.352
2/28/2002	3.25	16.88	5.20	12.14	30.78	97.76	37.68	0.681	0.353
3/31/2002	3.15	17.69	5.62	12.18	30.88	98.31	38.06	0.655	0.355
4/30/2002	3.21	17.65	5.50	12.19	30.98	98.84	38.43	0.656	0.356
5/31/2002	3.19	16.25	5.09	12.21	31.07	99.34	38.81	0.711	0.358
6/30/2002	3.19	16.10	5.05	12.21	31.17	99.82	39.17	0.717	0.360
7/31/2002	3.06	14.44	4.72	11.56	31.27	100.27	39.53	0.755	0.362
8/31/2002	2.87	15.12	5.27	12.30	31.35	100.74	39.91	0.771	0.363
9/30/2002	2.88	14.65	5.09	11.35	31.44	101.18	40.25	0.733	0.365
10/31/2002	2.98	17.21	5.77	20.51	31.53	101.71	40.89	1.135	0.369
11/30/2002	2.73	19.61	7.18	24.61	31.61	102.30	41.63	1.206	0.374
12/31/2002	2.55	17.53	6.89	18.37	31.69	102.84	42.20	1.006	0.377
1/31/2003	2.68	18.71	6.97	21.42	31.78	103.42	42.86	1.099	0.381

Date	Oil Rate (CD) m3/d	Water Rate (CD) m3/d	Water Oil Ratio m3/m3	Water Inj Rate (CD) m3/d	Cum Oil Prod Km3	Cum Water Prod Km3	Cum Water Inj Km3	Voidage Replacement Ratio	Cum Voidage Replacement Ratio
2/28/2003	2.68	18.08	6.74	25.56	31.85	103.93	43.58	1.356	0.385
3/31/2003	2.31	21.32	9.23	25.33	31.92	104.59	44.36	1.152	0.390
4/30/2003	2.84	23.52	8.27	24.57	32.01	105.30	45.10	1.010	0.394
5/31/2003	2.86	22.16	7.75	21.55	32.10	105.98	45.77	0.938	0.397
6/30/2003	2.84	21.14	7.43	20.08	32.18	106.62	46.37	0.914	0.400
7/31/2003	2.73	19.40	7.11	20.01	32.27	107.22	46.99	0.991	0.403
8/31/2003	3.82	22.36	5.86	18.55	32.39	107.91	47.56	0.791	0.406
9/30/2003	4.00	24.14	6.04	17.61	32.51	108.64	48.09	0.696	0.407
10/31/2003	3.87	23.04	5.95	21.21	32.63	109.35	48.75	0.878	0.410
11/30/2003	3.75	22.30	5.94	6.13	32.74	110.02	48.93	0.262	0.410
12/31/2003	2.43	17.59	7.25	23.45	32.81	110.57	49.66	1.282	0.414
1/31/2004	3.79	25.91	6.83	25.59	32.93	111.37	50.45	0.947	0.417
2/29/2004	3.44	21.08	6.13	21.76	33.03	111.98	51.08	0.986	0.420
3/31/2004	2.97	18.59	6.27	17.32	33.12	112.56	51.62	0.890	0.423
4/30/2004	3.72	21.14	5.68	16.08	33.23	113.19	52.10	0.724	0.424
5/31/2004	3.48	19.63	5.64	15.75	33.34	113.80	52.59	0.763	0.426
6/30/2004	3.52	20.15	5.73	16.57	33.45	114.40	53.09	0.783	0.428
7/31/2004	3.42	20.15	5.89	18.50	33.55	115.03	53.66	0.875	0.430
8/31/2004	3.31	18.27	5.52	9.32	33.66	115.59	53.95	0.484	0.430
9/30/2004	3.24	19.68	6.07	15.90	33.75	116.19	54.43	0.771	0.432
10/31/2004	3.22	19.21	5.97	16.77	33.85	116.78	54.95	0.833	0.434
11/30/2004	3.28	19.53	5.96	16.19	33.95	117.37	55.43	0.790	0.436
12/31/2004	3.29	19.50	5.93	16.67	34.05	117.97	55.95	0.815	0.438
1/31/2005	3.18	19.17	6.02	16.65	34.15	118.57	56.47	0.829	0.440
2/28/2005	3.13	19.12	6.12	16.73	34.24	119.10	56.94	0.836	0.441
3/31/2005	2.99	18.95	6.33	16.26	34.33	119.69	57.44	0.820	0.443
4/30/2005	2.93	18.62	6.35	16.58	34.42	120.25	57.94	0.851	0.445
5/31/2005	2.84	18.30	6.44	16.63	34.51	120.81	58.45	0.870	0.447
6/30/2005	2.80	18.28	6.52	16.13	34.59	121.36	58.94	0.845	0.449
7/31/2005	2.66	17.91	6.73	16.80	34.68	121.92	59.46	0.900	0.451
8/31/2005	2.74	18.05	6.59	16.78	34.76	122.48	59.98	0.890	0.453
9/30/2005	2.53	18.08	7.14	16.55	34.84	123.02	60.47	0.879	0.454
10/31/2005	2.42	18.12	7.48	16.18	34.91	123.58	60.98	0.860	0.456
11/30/2005	2.44	19.15	7.86	16.95	34.98	124.16	61.48	0.854	0.458
12/31/2005	2.57	20.07	7.82	17.69	35.06	124.78	62.03	0.850	0.460
1/31/2006	2.55	19.68	7.71	17.11	35.14	125.39	62.56	0.838	0.462
2/28/2006	2.59	19.55	7.54	14.09	35.22	125.94	62.96	0.694	0.463
3/31/2006	2.66	17.57	6.61	12.17	35.30	126.48	63.33	0.664	0.463
4/30/2006	2.62	16.64	6.35	12.10	35.38	126.98	63.70	0.695	0.464
5/31/2006	2.85	17.73	6.23	11.56	35.47	127.53	64.06	0.623	0.465
6/30/2006	3.09	18.86	6.11	11.73	35.56	128.10	64.41	0.594	0.465
7/31/2006	3.05	19.30	6.33	11.62	35.65	128.69	64.77	0.576	0.466
8/31/2006	2.87	18.48	6.45	11.87	35.74	129.27	65.14	0.615	0.467
9/30/2006	3.07	19.19	6.25	12.14	35.83	129.84	65.50	0.605	0.467
10/31/2006	2.95	19.72	6.70	11.18	35.92	130.45	65.85	0.543	0.468
11/30/2006	2.96	19.40	6.55	9.62	36.01	131.04	66.14	0.475	0.468
12/31/2006	2.94	19.64	6.68	11.13	36.10	131.64	66.48	0.543	0.468
1/31/2007	2.52	15.78	6.27	11.05	36.18	132.13	66.82	0.669	0.469

Date	Oil Rate (CD) m3/d	Water Rate (CD) m3/d	Water Oil Ratio m3/m3	Water Inj Rate (CD) m3/d	Cum Oil Prod Km3	Cum Water Prod Km3	Cum Water Inj Km3	Voidage Replacement Ratio	Cum Voidage Replacement Ratio
2/28/2007	2.24	21.13	9.44	10.54	36.25	132.73	67.12	0.484	0.469
3/31/2007	2.61	23.25	8.90	9.91	36.33	133.45	67.43	0.413	0.468
4/30/2007	2.54	23.05	9.07	10.82	36.40	134.14	67.75	0.455	0.468
5/31/2007	2.46	24.01	9.77	11.64	36.48	134.88	68.11	0.471	0.468
6/30/2007	2.32	24.06	10.36	3.10	36.55	135.60	68.20	0.125	0.467
7/31/2007	2.47	24.86	10.07	8.58	36.63	136.37	68.47	0.335	0.466
8/31/2007	2.43	24.33	10.03	7.16	36.70	137.13	68.69	0.286	0.465
9/30/2007	2.34	24.24	10.34	2.64	36.77	137.86	68.77	0.106	0.463
10/31/2007	2.31	23.82	10.33	13.28	36.84	138.59	69.18	0.542	0.464
11/30/2007	2.20	21.18	9.64	12.46	36.91	139.23	69.56	0.571	0.464
12/31/2007	2.28	21.74	9.52	12.34	36.98	139.90	69.94	0.551	0.464
1/31/2008	2.22	21.45	9.68	11.82	37.05	140.57	70.31	0.535	0.465
2/29/2008	2.25	22.03	9.80	10.76	37.11	141.21	70.62	0.474	0.465
3/31/2008	2.23	21.43	9.61	11.83	37.18	141.87	70.98	0.536	0.465
4/30/2008	2.31	22.19	9.62	12.51	37.25	142.54	71.36	0.547	0.465
5/31/2008	2.12	21.15	9.96	11.99	37.32	143.19	71.73	0.551	0.466
6/30/2008	1.91	23.40	12.23	11.16	37.37	143.89	72.07	0.466	0.466
7/31/2008	2.05	22.45	10.96	4.34	37.44	144.59	72.20	0.188	0.465
8/31/2008	1.53	20.26	13.25	10.80	37.48	145.22	72.54	0.522	0.465
9/30/2008	2.08	24.02	11.53	14.96	37.55	145.94	72.98	0.608	0.465
10/31/2008	2.08	23.75	11.42	14.87	37.61	146.68	73.45	0.611	0.466
11/30/2008	1.94	23.84	12.27	14.60	37.67	147.39	73.88	0.598	0.467
12/31/2008	1.97	23.63	12.01	14.47	37.73	148.12	74.33	0.598	0.467
1/31/2009	2.03	23.51	11.59	14.63	37.79	148.85	74.79	0.607	0.468
2/28/2009	2.00	23.42	11.71	14.24	37.85	149.51	75.18	0.593	0.469
3/31/2009	1.90	23.06	12.14	14.40	37.91	150.22	75.63	0.610	0.469
4/30/2009	1.76	22.57	12.85	14.10	37.96	150.90	76.05	0.611	0.470
5/31/2009	2.10	24.61	11.74	14.22	38.03	151.66	76.49	0.564	0.470
6/30/2009	2.01	23.03	11.46	14.15	38.09	152.35	76.92	0.599	0.471
7/31/2009	1.92	21.89	11.42	15.31	38.15	153.03	77.39	0.682	0.472
8/31/2009	1.96	22.25	11.36	14.64	38.21	153.72	77.85	0.642	0.472
9/30/2009	1.90	20.76	10.91	14.64	38.26	154.34	78.29	0.687	0.473
10/31/2009	1.97	23.21	11.78	14.50	38.33	155.06	78.74	0.610	0.474
11/30/2009	1.99	24.18	12.15	15.29	38.39	155.79	79.20	0.618	0.475
12/31/2009	1.96	23.47	11.95	14.43	38.45	156.52	79.64	0.600	0.475
1/31/2010	1.90	23.20	12.23	14.92	38.50	157.24	80.11	0.628	0.476
2/28/2010	1.99	23.78	11.93	14.31	38.56	157.90	80.51	0.588	0.476
3/31/2010	1.93	23.26	12.04	13.47	38.62	158.62	80.92	0.566	0.477
4/30/2010	2.00	23.03	11.49	14.16	38.68	159.31	81.35	0.600	0.477
5/31/2010	1.88	21.75	11.55	12.52	38.74	159.99	81.74	0.562	0.477
6/30/2010	1.96	22.39	11.40	13.50	38.80	160.66	82.14	0.588	0.478
7/31/2010	1.57	21.31	13.56	14.07	38.85	161.32	82.58	0.647	0.479
8/31/2010	1.26	20.68	16.35	13.28	38.89	161.96	82.99	0.631	0.479
9/30/2010	1.46	21.54	14.79	13.24	38.93	162.61	83.39	0.603	0.480
10/31/2010	1.46	23.08	15.79	14.51	38.97	163.32	83.84	0.618	0.480
11/30/2010	1.47	24.44	16.59	11.46	39.02	164.06	84.18	0.461	0.480
12/31/2010	1.48	24.82	16.73	14.95	39.06	164.83	84.64	0.592	0.481

# Pattern: 00/08-14-010-29 Set: North Ebor Unit # 2

Oil Formation Vol. Factor : 1.05 m3/m3

Water Formation Vol Factor : 1.00 m3/m3

Water / Oil Ratio : 3.99 m3/m3

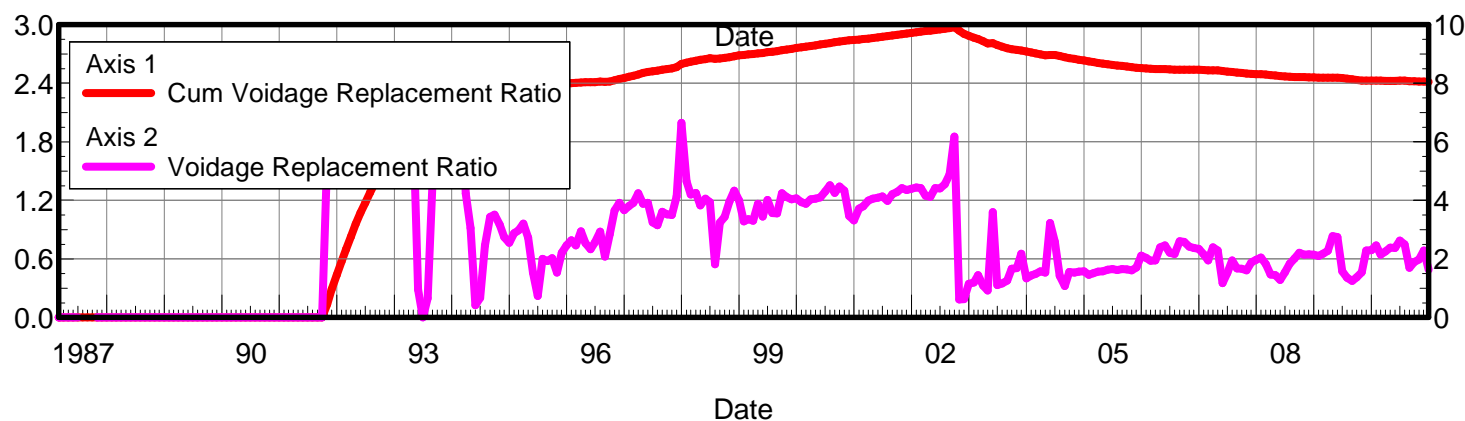
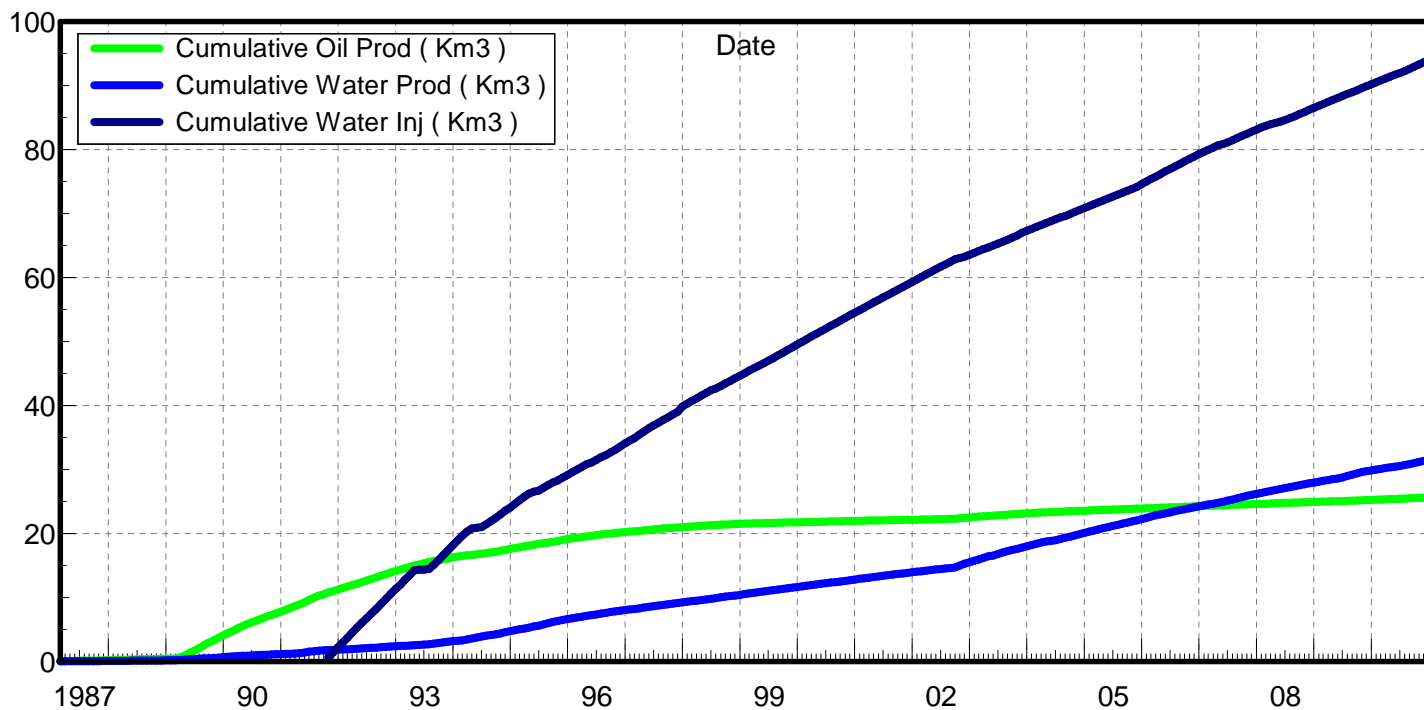
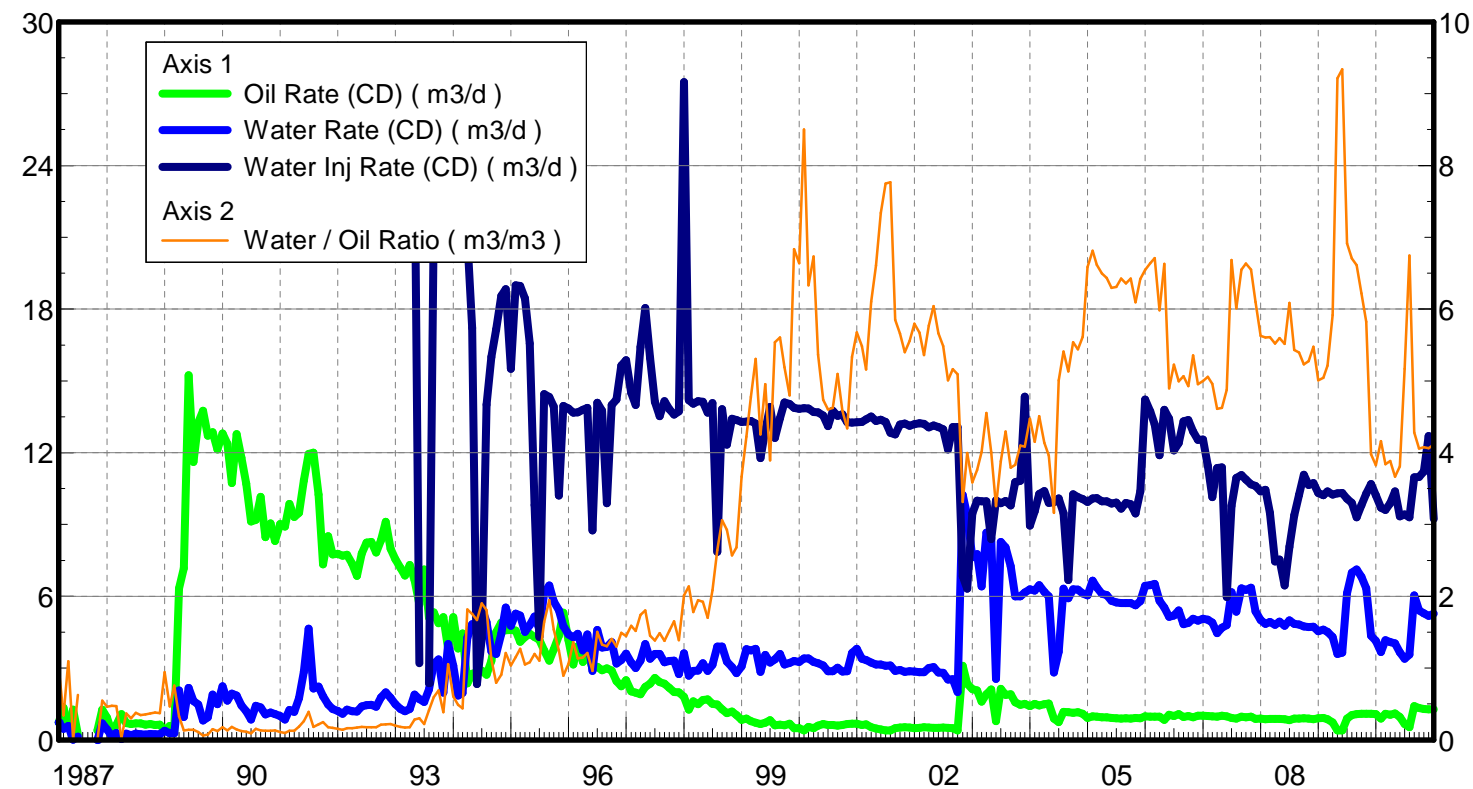
July 26, 2011

Operator: Tundra\_Oil\_and\_Gas\_Patnership

Oil Rate (CD) : 1.17 m3/d

Water Rate (CD) : 4.68 m3/d

Water Inj Rate (CD) : 9.62 m3/d



Date	Oil Rate (CD) m3/d	Water Rate (CD) m3/d	Water Oil Ratio m3/m3	Water Inj Rate (CD) m3/d	Cum Oil Prod Km3	Cum Water Prod Km3	Cum Water Inj Km3	Voidage Replacement Ratio	Cum Voidage Replacement Ratio
2/28/1987	0.72	0.73	1.00		0.02	0.02	0.00	0.000	0.000
3/31/1987	1.34	0.46	0.34		0.06	0.03	0.00	0.000	0.000
4/30/1987	0.53	0.58	1.09		0.08	0.05	0.00	0.000	0.000
5/31/1987	1.27	0.01	0.01		0.12	0.05	0.00	0.000	0.000
6/30/1987	0.22	0.14	0.63		0.12	0.06	0.00	0.000	0.000
10/31/1987	0.39	0.00	0.00		0.14	0.06	0.00	0.000	0.000
11/30/1987	1.27	0.69	0.55		0.17	0.08	0.00	0.000	0.000
12/31/1987	0.93	0.43	0.46		0.20	0.09	0.00	0.000	0.000
1/31/1988	0.33	0.15	0.48		0.21	0.10	0.00	0.000	0.000
2/29/1988	0.62	0.29	0.47		0.23	0.10	0.00	0.000	0.000
3/31/1988	1.07	0.03	0.03		0.26	0.11	0.00	0.000	0.000
4/30/1988	0.70	0.26	0.37		0.29	0.11	0.00	0.000	0.000
5/31/1988	0.66	0.20	0.30		0.31	0.12	0.00	0.000	0.000
6/30/1988	0.69	0.26	0.38		0.33	0.13	0.00	0.000	0.000
7/31/1988	0.69	0.24	0.34		0.35	0.13	0.00	0.000	0.000
8/31/1988	0.64	0.23	0.35		0.37	0.14	0.00	0.000	0.000
9/30/1988	0.67	0.25	0.37		0.39	0.15	0.00	0.000	0.000
10/31/1988	0.62	0.24	0.38		0.41	0.16	0.00	0.000	0.000
11/30/1988	0.63	0.23	0.37		0.43	0.16	0.00	0.000	0.000
12/31/1988	0.40	0.38	0.94		0.44	0.17	0.00	0.000	0.000
1/31/1989	0.58	0.27	0.46		0.46	0.18	0.00	0.000	0.000
2/28/1989	0.36	0.28	0.75		0.47	0.19	0.00	0.000	0.000
3/31/1989	6.33	2.07	0.33		0.66	0.25	0.00	0.000	0.000
4/30/1989	7.18	0.96	0.13		0.88	0.28	0.00	0.000	0.000
5/31/1989	15.24	2.17	0.14		1.35	0.35	0.00	0.000	0.000
6/30/1989	11.61	1.62	0.14		1.70	0.40	0.00	0.000	0.000
7/31/1989	13.26	1.48	0.11		2.11	0.45	0.00	0.000	0.000
8/31/1989	13.76	0.81	0.06		2.54	0.47	0.00	0.000	0.000
9/30/1989	12.72	0.94	0.07		2.92	0.50	0.00	0.000	0.000
10/31/1989	12.85	1.90	0.15		3.32	0.56	0.00	0.000	0.000
11/30/1989	12.14	1.49	0.12		3.68	0.60	0.00	0.000	0.000
12/31/1989	12.80	2.24	0.17		4.08	0.67	0.00	0.000	0.000
1/31/1990	12.37	1.65	0.13		4.46	0.72	0.00	0.000	0.000
2/28/1990	10.73	1.94	0.18		4.76	0.78	0.00	0.000	0.000
3/31/1990	12.78	1.85	0.14		5.16	0.83	0.00	0.000	0.000
4/30/1990	11.79	1.44	0.12		5.51	0.88	0.00	0.000	0.000
5/31/1990	10.70	1.20	0.11		5.84	0.91	0.00	0.000	0.000
6/30/1990	9.13	0.85	0.09		6.12	0.94	0.00	0.000	0.000
7/31/1990	9.19	1.42	0.15		6.40	0.98	0.00	0.000	0.000
8/31/1990	10.16	1.36	0.13		6.72	1.03	0.00	0.000	0.000
9/30/1990	8.47	1.06	0.13		6.97	1.06	0.00	0.000	0.000
10/31/1990	9.05	1.14	0.13		7.25	1.09	0.00	0.000	0.000
11/30/1990	8.32	1.08	0.13		7.50	1.13	0.00	0.000	0.000
12/31/1990	9.02	1.00	0.11		7.78	1.16	0.00	0.000	0.000
1/31/1991	8.92	0.85	0.10		8.06	1.18	0.00	0.000	0.000
2/28/1991	9.87	1.25	0.13		8.33	1.22	0.00	0.000	0.000
3/31/1991	9.32	1.17	0.13		8.62	1.25	0.00	0.000	0.000
4/30/1991	9.49	1.74	0.18		8.91	1.31	0.00	0.000	0.000



Date	Oil Rate (CD) m3/d	Water Rate (CD) m3/d	Water Oil Ratio m3/m3	Water Inj Rate (CD) m3/d	Cum Oil Prod Km3	Cum Water Prod Km3	Cum Water Inj Km3	Voidage Replacement Ratio	Cum Voidage Replacement Ratio
5/31/1991	10.84	2.84	0.26		9.24	1.39	0.00	0.000	0.000
6/30/1991	11.95	4.65	0.39		9.60	1.53	0.00	0.000	0.000
7/31/1991	12.01	2.15	0.18		9.97	1.60	0.00	0.000	0.000
8/31/1991	10.25	2.23	0.22		10.29	1.67	0.00	0.000	0.000
9/30/1991	7.33	1.82	0.25		10.51	1.72	0.00	0.000	0.000
10/31/1991	8.51	1.48	0.17	21.56	10.78	1.77	0.67	5.465	0.137
11/30/1991	7.75	1.29	0.17	25.91	11.01	1.81	1.45	7.340	0.290
12/31/1991	7.77	1.21	0.16	25.02	11.25	1.85	2.22	7.236	0.436
1/31/1992	7.70	1.10	0.14	24.66	11.49	1.88	2.99	7.423	0.574
2/29/1992	7.73	1.27	0.16	25.23	11.71	1.92	3.72	7.206	0.701
3/31/1992	7.36	1.20	0.16	24.62	11.94	1.95	4.48	7.404	0.829
4/30/1992	6.85	1.19	0.17	26.27	12.15	1.99	5.27	8.294	0.958
5/31/1992	7.79	1.40	0.18	24.39	12.39	2.03	6.03	6.673	1.073
6/30/1992	8.25	1.45	0.18	23.37	12.63	2.08	6.73	6.088	1.174
7/31/1992	8.27	1.46	0.18	24.32	12.89	2.12	7.48	6.306	1.279
8/31/1992	7.83	1.39	0.18	25.07	13.13	2.17	8.26	6.867	1.385
9/30/1992	8.33	1.77	0.21	24.33	13.38	2.22	8.99	5.820	1.476
10/31/1992	9.12	1.98	0.22	25.62	13.67	2.28	9.78	5.548	1.569
11/30/1992	7.99	1.76	0.22	25.46	13.91	2.33	10.55	6.261	1.660
12/31/1992	7.55	1.49	0.20	25.54	14.14	2.38	11.34	6.960	1.753
1/31/1993	7.18	1.30	0.18	21.93	14.36	2.42	12.02	6.498	1.828
2/28/1993	6.86	1.19	0.17	25.24	14.55	2.45	12.72	7.943	1.910
3/31/1993	7.31	1.29	0.18	25.10	14.78	2.49	13.50	7.378	1.995
4/30/1993	6.67	1.89	0.28	25.01	14.98	2.55	14.25	6.554	2.071
5/31/1993	5.66	1.70	0.30	3.20	15.16	2.60	14.35	0.957	2.054
6/30/1993	7.12	1.58	0.22		15.37	2.65	14.35	0.000	2.023
7/31/1993	5.11	2.11	0.41	2.38	15.53	2.71	14.43	0.663	2.002
8/31/1993	5.33	3.18	0.60	21.65	15.69	2.81	15.10	4.585	2.053
9/30/1993	4.87	3.36	0.69	25.54	15.84	2.91	15.86	5.352	2.116
10/31/1993	5.12	1.98	0.39	25.26	16.00	2.98	16.65	7.302	2.189
11/30/1993	3.80	4.01	1.06	25.13	16.11	3.10	17.40	4.919	2.243
12/31/1993	5.12	3.09	0.60	25.04	16.27	3.19	18.18	5.472	2.301
1/31/1994	3.81	1.85	0.49	24.71	16.39	3.25	18.94	8.354	2.371
2/28/1994	4.45	1.95	0.44	24.81	16.51	3.30	19.64	7.654	2.430
3/31/1994	2.35	4.27	1.82	20.96	16.59	3.44	20.29	4.229	2.464
4/30/1994	2.76	4.84	1.76	17.22	16.67	3.58	20.80	3.054	2.476
5/31/1994	2.83	4.72	1.67	2.33	16.76	3.73	20.87	0.420	2.434
6/30/1994	2.90	5.51	1.90	4.24	16.84	3.89	21.00	0.668	2.396
7/31/1994	2.72	4.91	1.81	14.01	16.93	4.05	21.44	2.460	2.397
8/31/1994	3.30	3.70	1.12	15.99	17.03	4.16	21.93	3.434	2.414
9/30/1994	4.51	3.59	0.80	17.15	17.17	4.27	22.45	3.508	2.431
10/31/1994	4.90	4.44	0.91	18.55	17.32	4.41	23.02	3.170	2.445
11/30/1994	4.58	5.54	1.21	18.83	17.46	4.57	23.59	2.745	2.452
12/31/1994	4.60	4.76	1.04	15.50	17.60	4.72	24.07	2.545	2.454
1/31/1995	4.57	5.27	1.15	18.99	17.74	4.88	24.66	2.880	2.462
2/28/1995	4.10	5.19	1.27	18.96	17.85	5.03	25.19	2.973	2.471
3/31/1995	4.30	4.52	1.05	18.45	17.99	5.17	25.76	3.203	2.484
4/30/1995	4.44	4.79	1.08	16.56	18.12	5.31	26.26	2.726	2.488

Date	Oil Rate (CD) m3/d	Water Rate (CD) m3/d	Water Oil Ratio m3/m3	Water Inj Rate (CD) m3/d	Cum Oil Prod Km3	Cum Water Prod Km3	Cum Water Inj Km3	Voidage Replacement Ratio	Cum Voidage Replacement Ratio
5/31/1995	4.31	5.16	1.20	9.81	18.25	5.47	26.56	1.532	2.470
6/30/1995	4.18	4.62	1.10	4.30	18.38	5.61	26.69	0.738	2.443
7/31/1995	3.74	6.14	1.64	14.45	18.50	5.80	27.14	2.002	2.434
8/31/1995	3.32	6.46	1.95	14.32	18.60	6.00	27.58	1.931	2.424
9/30/1995	3.77	5.79	1.53	13.93	18.71	6.17	28.00	2.025	2.417
10/31/1995	4.36	5.42	1.24	10.22	18.85	6.34	28.32	1.529	2.401
11/30/1995	5.31	4.76	0.90	13.95	19.01	6.49	28.73	2.215	2.398
12/31/1995	4.17	4.41	1.06	13.84	19.14	6.62	29.16	2.463	2.399
1/31/1996	3.15	4.28	1.36	13.68	19.23	6.75	29.59	2.634	2.402
2/29/1996	3.91	4.44	1.13	13.69	19.35	6.88	29.98	2.458	2.403
3/31/1996	3.26	3.74	1.15	13.80	19.45	7.00	30.41	2.945	2.409
4/30/1996	3.65	4.41	1.21	13.87	19.56	7.13	30.83	2.537	2.411
5/31/1996	3.01	2.89	0.96	8.76	19.65	7.22	31.10	2.331	2.410
6/30/1996	3.05	4.59	1.51	14.09	19.74	7.36	31.52	2.574	2.412
7/31/1996	2.91	3.85	1.33	13.75	19.83	7.48	31.95	2.929	2.418
8/31/1996	2.98	3.89	1.30	9.89	19.92	7.60	32.26	2.083	2.414
9/30/1996	2.90	4.08	1.41	13.99	20.01	7.72	32.68	2.845	2.419
10/31/1996	2.45	3.19	1.30	14.22	20.09	7.82	33.12	3.650	2.430
11/30/1996	2.24	3.34	1.49	15.63	20.15	7.92	33.59	3.921	2.443
12/31/1996	2.49	3.61	1.45	15.86	20.23	8.03	34.08	3.667	2.454
1/31/1997	2.03	3.23	1.59	14.50	20.29	8.13	34.53	3.804	2.466
2/28/1997	1.98	3.00	1.52	13.99	20.35	8.22	34.92	3.912	2.476
3/31/1997	1.90	3.32	1.74	16.42	20.41	8.32	35.43	4.246	2.491
4/30/1997	2.22	4.00	1.80	18.04	20.48	8.44	35.97	3.886	2.505
5/31/1997	2.34	3.39	1.45	15.95	20.55	8.54	36.46	3.919	2.517
6/30/1997	2.59	3.59	1.39	14.13	20.63	8.65	36.89	3.253	2.523
7/31/1997	2.42	3.60	1.49	13.52	20.70	8.76	37.31	3.147	2.529
8/31/1997	2.35	3.24	1.38	14.15	20.77	8.86	37.74	3.609	2.538
9/30/1997	2.17	3.30	1.52	13.83	20.84	8.96	38.16	3.520	2.546
10/31/1997	2.00	3.31	1.65	13.59	20.90	9.07	38.58	3.498	2.553
11/30/1997	1.98	2.75	1.39	13.73	20.96	9.15	38.99	4.130	2.564
12/31/1997	1.79	3.61	2.01	27.49	21.02	9.26	39.84	6.653	2.598
1/31/1998	1.26	2.69	2.14	14.19	21.06	9.34	40.28	4.652	2.610
2/28/1998	1.62	2.88	1.78	14.05	21.10	9.42	40.68	4.200	2.620
3/31/1998	1.49	2.90	1.94	14.15	21.15	9.51	41.12	4.254	2.631
4/30/1998	1.67	3.21	1.92	14.13	21.20	9.61	41.54	3.826	2.639
5/31/1998	1.69	2.88	1.70	13.67	21.25	9.70	41.96	4.053	2.648
6/30/1998	1.51	3.14	2.08	14.07	21.29	9.79	42.39	3.936	2.657
7/31/1998	1.48	3.90	2.64	7.86	21.34	9.91	42.63	1.817	2.650
8/31/1998	1.27	3.90	3.06	13.82	21.38	10.04	43.06	3.237	2.655
9/30/1998	1.12	3.27	2.93	12.33	21.41	10.13	43.43	3.433	2.660
10/31/1998	1.19	3.05	2.57	13.42	21.45	10.23	43.84	3.956	2.668
11/30/1998	1.04	2.79	2.68	13.37	21.48	10.31	44.25	4.329	2.678
12/31/1998	0.84	3.07	3.67	13.29	21.51	10.41	44.66	4.007	2.686
1/31/1999	0.90	3.79	4.22	13.29	21.54	10.52	45.07	3.285	2.690
2/28/1999	0.78	3.74	4.78	13.32	21.56	10.63	45.44	3.362	2.695
3/31/1999	0.72	3.80	5.31	13.22	21.58	10.75	45.85	3.299	2.699
4/30/1999	0.67	2.84	4.25	11.78	21.60	10.83	46.21	3.888	2.705

Date	Oil Rate (CD) m3/d	Water Rate (CD) m3/d	Water Oil Ratio m3/m3	Water Inj Rate (CD) m3/d	Cum Oil Prod Km3	Cum Water Prod Km3	Cum Water Inj Km3	Voidage Replacement Ratio	Cum Voidage Replacement Ratio
5/31/1999	0.72	3.55	4.95	12.94	21.62	10.94	46.61	3.444	2.710
6/30/1999	0.83	3.23	3.89	13.92	21.65	11.04	47.02	4.011	2.718
7/31/1999	0.61	3.36	5.54	12.61	21.67	11.14	47.42	3.570	2.724
8/31/1999	0.64	3.60	5.60	13.45	21.69	11.25	47.83	3.556	2.729
9/30/1999	0.61	3.15	5.19	14.10	21.70	11.35	48.26	4.239	2.738
10/31/1999	0.67	3.22	4.80	14.04	21.72	11.45	48.69	4.113	2.746
11/30/1999	0.48	3.30	6.83	13.88	21.74	11.55	49.11	4.031	2.753
12/31/1999	0.49	3.25	6.64	13.84	21.75	11.65	49.54	4.074	2.761
1/31/2000	0.40	3.40	8.50	13.86	21.77	11.75	49.97	3.943	2.768
2/29/2000	0.54	3.41	6.33	13.85	21.78	11.85	50.37	3.887	2.775
3/31/2000	0.48	3.26	6.73	13.70	21.80	11.95	50.79	4.033	2.782
4/30/2000	0.60	3.20	5.36	13.68	21.81	12.05	51.20	4.057	2.789
5/31/2000	0.66	3.12	4.74	13.56	21.84	12.15	51.62	4.100	2.796
6/30/2000	0.62	2.87	4.60	13.11	21.85	12.23	52.02	4.299	2.804
7/31/2000	0.62	2.86	4.63	13.75	21.87	12.32	52.44	4.518	2.812
8/31/2000	0.59	3.01	5.10	13.54	21.89	12.42	52.86	4.256	2.820
9/30/2000	0.62	2.86	4.58	13.60	21.91	12.50	53.27	4.478	2.828
10/31/2000	0.66	2.87	4.34	13.27	21.93	12.59	53.68	4.335	2.835
11/30/2000	0.68	3.63	5.33	13.26	21.95	12.70	54.08	3.469	2.839
12/31/2000	0.67	3.81	5.68	13.28	21.97	12.82	54.49	3.316	2.842
1/31/2001	0.62	3.40	5.48	13.29	21.99	12.92	54.90	3.717	2.847
2/28/2001	0.65	3.34	5.16	13.39	22.01	13.02	55.28	3.801	2.852
3/31/2001	0.53	3.23	6.10	13.52	22.03	13.12	55.70	3.996	2.858
4/30/2001	0.48	3.15	6.61	13.33	22.04	13.21	56.10	4.053	2.864
5/31/2001	0.43	3.15	7.34	13.38	22.05	13.31	56.51	4.088	2.871
6/30/2001	0.40	3.10	7.75	13.29	22.07	13.40	56.91	4.132	2.877
7/31/2001	0.40	3.11	7.77	12.83	22.08	13.50	57.31	3.981	2.882
8/31/2001	0.49	2.89	5.85	12.76	22.09	13.59	57.70	4.213	2.889
9/30/2001	0.52	2.92	5.66	13.18	22.11	13.67	58.10	4.290	2.895
10/31/2001	0.53	2.84	5.40	13.21	22.12	13.76	58.51	4.418	2.902
11/30/2001	0.52	2.87	5.55	13.13	22.14	13.85	58.90	4.349	2.909
12/31/2001	0.49	2.86	5.80	13.19	22.16	13.94	59.31	4.392	2.915
1/31/2002	0.50	2.84	5.67	13.24	22.17	14.02	59.72	4.441	2.922
2/28/2002	0.53	2.83	5.36	13.20	22.19	14.10	60.09	4.423	2.928
3/31/2002	0.52	3.00	5.77	13.06	22.20	14.20	60.50	4.151	2.934
4/30/2002	0.50	3.04	6.04	13.14	22.22	14.29	60.89	4.125	2.940
5/31/2002	0.50	2.81	5.66	13.08	22.23	14.38	61.30	4.423	2.946
6/30/2002	0.51	2.80	5.48	12.97	22.25	14.46	61.69	4.406	2.952
7/31/2002	0.50	2.52	5.01	12.14	22.26	14.54	62.06	4.555	2.959
8/31/2002	0.49	2.53	5.16	13.07	22.28	14.62	62.47	4.887	2.966
9/30/2002	0.39	2.00	5.09	13.08	22.29	14.68	62.86	6.177	2.976
10/31/2002	3.09	10.24	3.31	6.84	22.39	14.99	63.07	0.614	2.938
11/30/2002	2.35	9.39	3.99	6.32	22.46	15.28	63.26	0.628	2.906
12/31/2002	2.13	7.63	3.59	9.46	22.52	15.51	63.55	1.148	2.886
1/31/2003	2.06	7.76	3.76	10.00	22.59	15.75	63.86	1.196	2.866
2/28/2003	1.60	6.41	4.01	9.97	22.63	15.93	64.14	1.450	2.854
3/31/2003	1.90	8.66	4.55	9.97	22.69	16.20	64.45	1.082	2.832
4/30/2003	2.11	8.44	4.01	8.39	22.75	16.45	64.70	0.926	2.809

Date	Oil Rate (CD) m3/d	Water Rate (CD) m3/d	Water Oil Ratio m3/m3	Water Inj Rate (CD) m3/d	Cum Oil Prod Km3	Cum Water Prod Km3	Cum Water Inj Km3	Voidage Replacement Ratio	Cum Voidage Replacement Ratio
5/31/2003	0.78	2.55	3.26	10.00	22.78	16.53	65.01	3.600	2.812
6/30/2003	2.13	8.27	3.88	9.89	22.84	16.78	65.31	1.112	2.793
7/31/2003	1.87	8.05	4.29	9.98	22.90	17.03	65.62	1.162	2.774
8/31/2003	1.91	7.25	3.79	9.80	22.96	17.25	65.92	1.255	2.759
9/30/2003	1.57	6.00	3.83	10.77	23.01	17.43	66.25	1.669	2.750
10/31/2003	1.46	6.00	4.10	10.82	23.05	17.62	66.58	1.683	2.741
11/30/2003	1.51	6.15	4.08	14.34	23.10	17.81	67.01	2.176	2.737
12/31/2003	1.41	6.29	4.47	8.95	23.14	18.00	67.29	1.337	2.725
1/31/2004	1.50	6.24	4.15	9.55	23.19	18.19	67.59	1.432	2.714
2/29/2004	1.43	6.47	4.51	10.28	23.23	18.38	67.88	1.494	2.705
3/31/2004	1.49	6.18	4.14	10.40	23.27	18.57	68.21	1.572	2.695
4/30/2004	1.51	5.99	3.96	9.90	23.32	18.75	68.50	1.539	2.687
5/31/2004	0.89	2.82	3.16	9.92	23.35	18.84	68.81	3.228	2.689
6/30/2004	0.74	3.69	5.01	10.09	23.37	18.95	69.11	2.585	2.688
7/31/2004	1.17	6.32	5.41	9.48	23.41	19.15	69.41	1.424	2.678
8/31/2004	1.15	5.91	5.13	6.68	23.44	19.33	69.61	1.070	2.666
9/30/2004	1.14	6.29	5.54	10.27	23.48	19.52	69.92	1.551	2.658
10/31/2004	1.15	6.28	5.44	10.15	23.51	19.71	70.24	1.534	2.649
11/30/2004	1.09	6.12	5.61	10.06	23.54	19.90	70.54	1.564	2.641
12/31/2004	0.92	6.03	6.58	9.95	23.57	20.08	70.85	1.579	2.634
1/31/2005	0.98	6.66	6.81	10.09	23.60	20.29	71.16	1.454	2.624
2/28/2005	0.96	6.38	6.61	10.10	23.63	20.47	71.44	1.517	2.617
3/31/2005	0.94	6.10	6.50	9.97	23.66	20.66	71.75	1.565	2.609
4/30/2005	0.94	6.05	6.44	9.97	23.69	20.84	72.05	1.578	2.602
5/31/2005	0.92	5.81	6.29	9.88	23.72	21.02	72.36	1.627	2.595
6/30/2005	0.91	5.74	6.31	9.92	23.74	21.19	72.66	1.652	2.589
7/31/2005	0.89	5.72	6.42	9.66	23.77	21.37	72.96	1.617	2.583
8/31/2005	0.90	5.72	6.36	9.90	23.80	21.55	73.26	1.655	2.577
9/30/2005	0.89	5.72	6.42	9.84	23.83	21.72	73.56	1.648	2.571
10/31/2005	0.92	5.62	6.09	9.46	23.85	21.89	73.85	1.606	2.565
11/30/2005	0.90	5.80	6.42	10.38	23.88	22.07	74.16	1.713	2.560
12/31/2005	0.98	6.44	6.54	14.22	23.91	22.27	74.60	2.115	2.556
1/31/2006	0.97	6.47	6.64	13.73	23.94	22.47	75.03	2.035	2.553
2/28/2006	0.97	6.52	6.71	13.18	23.97	22.65	75.40	1.938	2.549
3/31/2006	0.97	5.81	5.98	11.90	24.00	22.83	75.77	1.954	2.545
4/30/2006	0.83	5.53	6.63	13.80	24.02	23.00	76.18	2.392	2.544
5/31/2006	1.05	5.15	4.90	13.42	24.06	23.15	76.60	2.461	2.544
6/30/2006	0.99	5.19	5.22	12.10	24.09	23.31	76.96	2.209	2.542
7/31/2006	1.08	5.41	4.99	12.40	24.12	23.48	77.34	2.165	2.540
8/31/2006	0.95	4.84	5.07	13.31	24.15	23.63	77.76	2.603	2.540
9/30/2006	0.99	4.89	4.93	13.36	24.18	23.78	78.16	2.579	2.540
10/31/2006	0.95	5.06	5.35	12.88	24.21	23.93	78.56	2.414	2.540
11/30/2006	1.01	4.99	4.95	12.53	24.24	24.08	78.93	2.374	2.539
12/31/2006	1.01	5.06	5.00	12.55	24.27	24.24	79.32	2.343	2.538
1/31/2007	0.99	5.03	5.06	11.45	24.30	24.39	79.68	2.155	2.536
2/28/2007	0.99	4.91	4.96	10.15	24.33	24.53	79.96	1.954	2.533
3/31/2007	0.97	4.46	4.61	11.36	24.36	24.67	80.31	2.394	2.532
4/30/2007	1.01	4.69	4.63	11.39	24.39	24.81	80.65	2.287	2.531

Date	Oil Rate (CD) m3/d	Water Rate (CD) m3/d	Water Oil Ratio m3/m3	Water Inj Rate (CD) m3/d	Cum Oil Prod Km3	Cum Water Prod Km3	Cum Water Inj Km3	Voidage Replacement Ratio	Cum Voidage Replacement Ratio
5/31/2007	0.98	4.80	4.88	5.97	24.42	24.96	80.84	1.175	2.524
6/30/2007	0.92	6.17	6.68	9.79	24.45	25.14	81.13	1.520	2.518
7/31/2007	0.89	5.35	6.01	10.94	24.48	25.31	81.47	1.950	2.515
8/31/2007	0.97	6.34	6.55	11.06	24.51	25.51	81.82	1.671	2.510
9/30/2007	0.94	6.26	6.64	10.88	24.53	25.69	82.14	1.666	2.505
10/31/2007	0.97	6.36	6.55	10.67	24.56	25.89	82.47	1.607	2.499
11/30/2007	0.88	5.37	6.10	10.61	24.59	26.05	82.79	1.888	2.496
12/31/2007	0.89	5.01	5.63	10.38	24.62	26.21	83.11	1.970	2.494
1/31/2008	0.86	4.85	5.60	10.45	24.64	26.36	83.44	2.052	2.492
2/29/2008	0.88	4.93	5.61	9.49	24.67	26.50	83.71	1.831	2.489
3/31/2008	0.87	4.81	5.52	7.45	24.70	26.65	83.94	1.472	2.484
4/30/2008	0.88	4.94	5.60	7.54	24.72	26.80	84.17	1.450	2.479
5/31/2008	0.86	4.77	5.51	6.45	24.75	26.95	84.37	1.285	2.474
6/30/2008	0.82	4.99	6.09	8.07	24.77	27.10	84.61	1.544	2.470
7/31/2008	0.89	4.85	5.43	9.38	24.80	27.25	84.90	1.836	2.467
8/31/2008	0.89	4.82	5.39	10.24	24.83	27.40	85.22	2.017	2.465
9/30/2008	0.91	4.74	5.23	11.07	24.86	27.54	85.55	2.212	2.464
10/31/2008	0.89	4.71	5.27	10.65	24.89	27.68	85.88	2.143	2.462
11/30/2008	0.86	4.73	5.47	10.74	24.91	27.83	86.20	2.158	2.461
12/31/2008	0.91	4.54	5.01	10.31	24.94	27.97	86.52	2.148	2.459
1/31/2009	0.91	4.60	5.04	10.22	24.97	28.11	86.84	2.100	2.458
2/28/2009	0.86	4.51	5.21	10.38	24.99	28.24	87.13	2.182	2.457
3/31/2009	0.73	4.29	5.92	10.25	25.01	28.37	87.45	2.276	2.456
4/30/2009	0.39	3.59	9.21	10.31	25.03	28.48	87.76	2.781	2.457
5/31/2009	0.39	3.65	9.34	10.32	25.04	28.59	88.08	2.746	2.458
6/30/2009	0.89	6.13	6.91	10.07	25.06	28.77	88.38	1.577	2.453
7/31/2009	1.04	6.99	6.71	9.91	25.10	28.99	88.69	1.359	2.447
8/31/2009	1.08	7.12	6.61	9.30	25.13	29.21	88.98	1.251	2.439
9/30/2009	1.10	6.82	6.22	9.81	25.16	29.42	89.27	1.375	2.433
10/31/2009	1.09	6.33	5.82	10.29	25.20	29.61	89.59	1.548	2.428
11/30/2009	1.09	4.35	3.98	10.69	25.23	29.74	89.91	2.291	2.427
12/31/2009	1.08	4.14	3.83	10.23	25.26	29.87	90.23	2.300	2.427
1/31/2010	0.88	3.68	4.16	9.71	25.29	29.98	90.53	2.468	2.427
2/28/2010	1.09	4.17	3.84	9.61	25.32	30.10	90.80	2.144	2.426
3/31/2010	1.05	4.08	3.88	9.89	25.35	30.23	91.10	2.254	2.425
4/30/2010	1.10	4.03	3.67	10.38	25.39	30.35	91.42	2.386	2.425
5/31/2010	0.96	3.66	3.81	9.34	25.42	30.46	91.70	2.370	2.425
6/30/2010	0.66	3.39	5.17	9.42	25.44	30.56	91.99	2.630	2.426
7/31/2010	0.53	3.57	6.74	9.30	25.45	30.68	92.28	2.499	2.426
8/31/2010	1.41	6.04	4.28	10.97	25.50	30.86	92.62	1.703	2.422
9/30/2010	1.33	5.41	4.06	10.99	25.54	31.02	92.95	1.895	2.420
10/31/2010	1.30	5.28	4.07	11.21	25.58	31.19	93.29	1.980	2.418
11/30/2010	1.28	5.19	4.06	12.69	25.61	31.34	93.67	2.285	2.417
12/31/2010	1.28	5.28	4.11	9.23	25.65	31.51	93.96	1.634	2.414