

**NORTH PIERSON UNIT NO. 1
WATERFLOOD EOR PROJECT

ANNUAL REPORT FOR 2015**

March 21, 2016

Tundra Oil and Gas Partnership

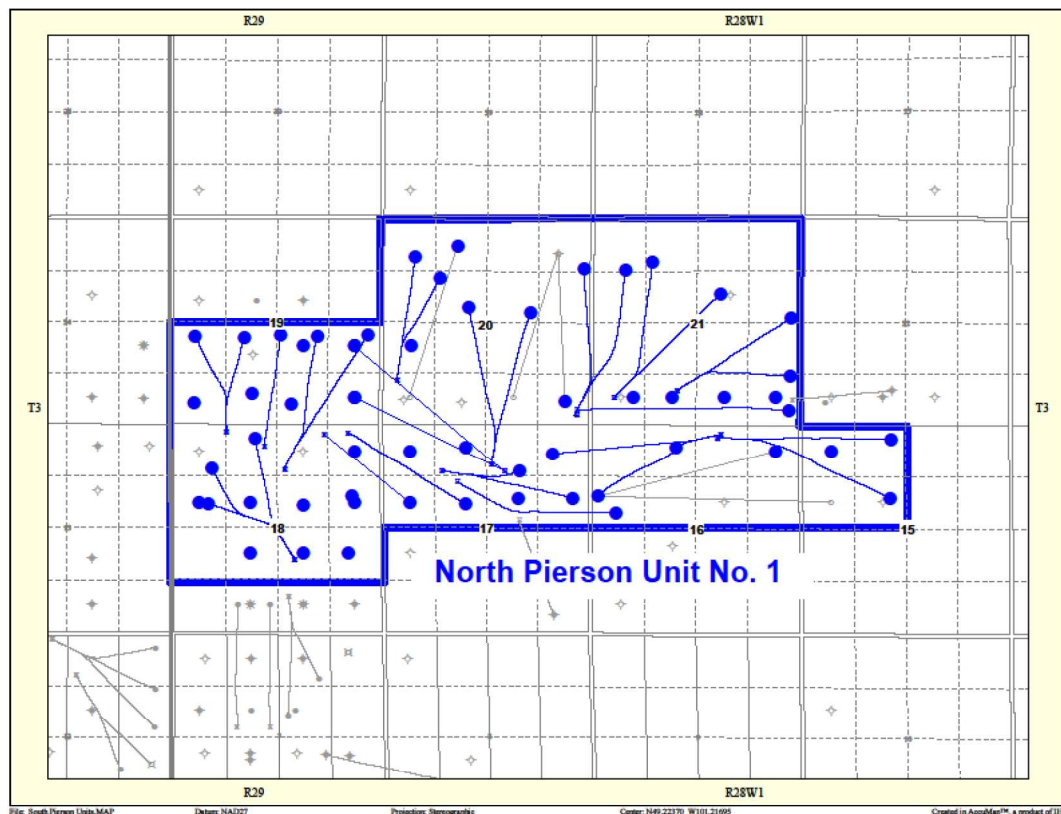
Table of Contents

INTRODUCTION.....	3
DISCUSSION.....	3
Production History	3
Waterflood History.....	5
Waterflood EOR Operating Strategy and Performance	6
Water Source and Quality	6
Injection Wellhead Pressures	6
Reservoir Pressure	6
Well Servicing	6
Waterflood Performance Discussion	6
List of Appendices.....	7
Appendix A: Well List and Well Status	
Appendix B: Injection Pattern Summary	
Appendix C: Average Monthly Injection Pressure Summary	
Appendix D: Injector Pattern Production/Injection Rates, Cumulative and VRR	
Plot and Table	

INTRODUCTION

North Pierson Unit No. 1 Enhanced Oil Recovery (EOR) Waterflood Project was approved under Waterflood Order No. 31, effective January 1st, 2014 with Tundra Oil and Gas as Operator. The EOR project area, outlined in blue in Figure 1, contains 1 deviated, 27 vertical and 30 horizontal wells in 72 LSDs in Township 3, Range 28W1. Well list and well status is available in Appendix A.

Figure 1: North Pierson Unit No. 1 Area Outline



In accordance with Section 73 of the Manitoba Drilling and Production Regulation, Tundra submits the following 2015 Annual Progress Report for North Pierson Unit No. 1 as required by Waterflood Order No. 31.

DISCUSSION

Production History

For the wells included in North Pierson Unit No. 1, production started in November 1965 with the 00/13-17-003-28W1/00 well. Oil production peaked at 74.7 m³/d in March of

2007. In 2015, the average production for the unit was 27.1 m³/d of oil and 126.9 m³/d of water, and the average WOR was 4.67 m³/m³. Water injection commenced in North Pierson Unit No. 1 in February 2014. The rates and WOR are presented in Figure 2.

Figure 2: North Pierson Unit No. 1 Production/Injection Rates and WOR vs. Time

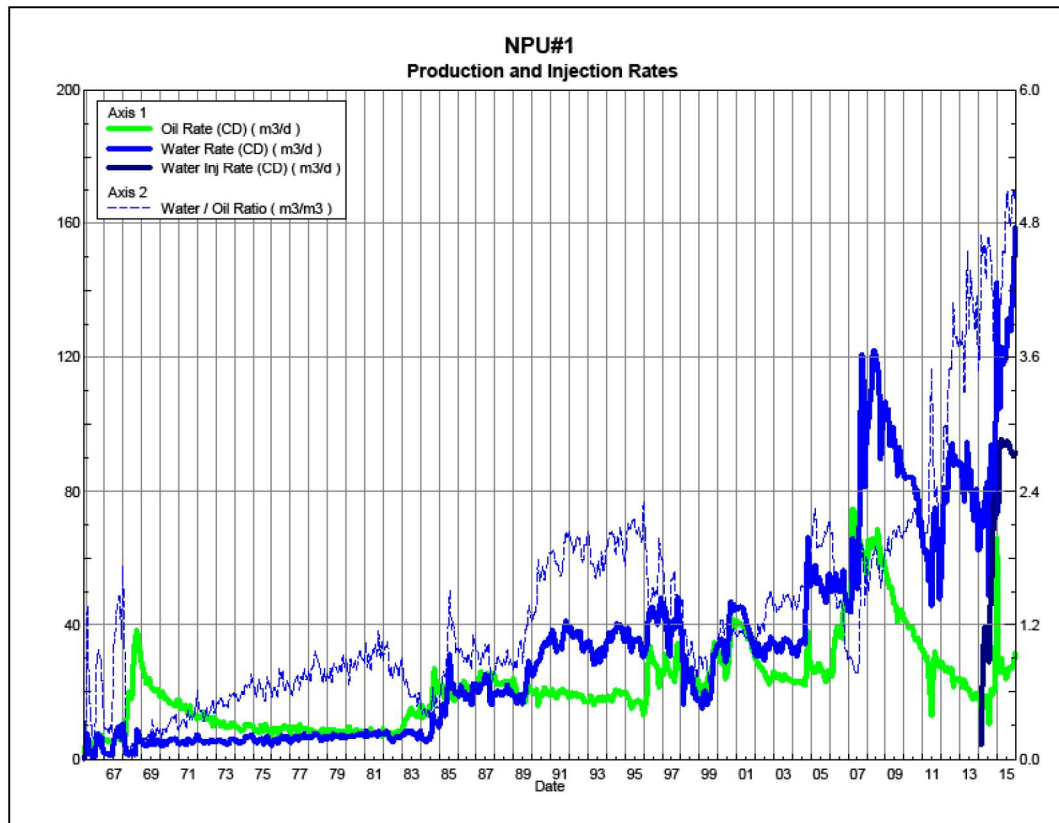
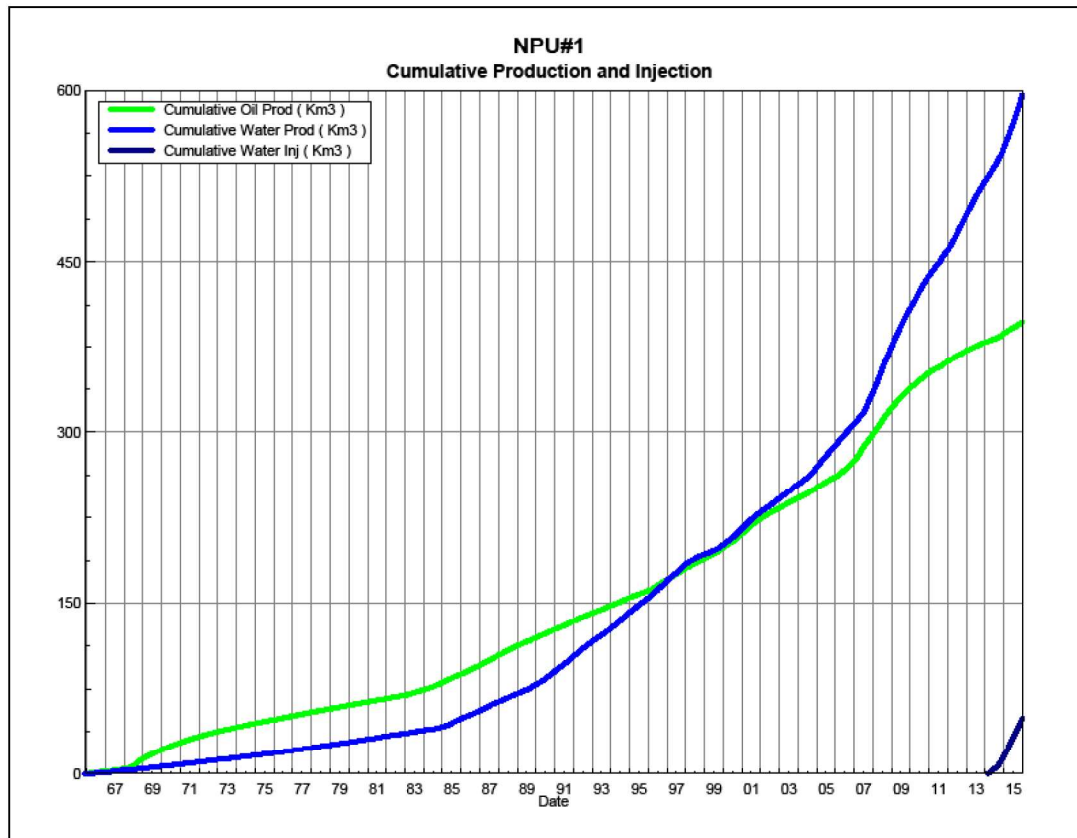


Figure 3 shows the cumulative production for North Pierson Unit No. 1 to the end of December 2015 as 396.3 e³m³ of oil and 596.4 e³m³ of water, representing a 26.9% recovery factor of the OOIP. The cumulative water injected is 49.1 e³m³.

Figure 3: NPU1 Cumulative Oil, Water and Water Injected vs. Time



Waterflood History

North Pierson Unit No. 1 is still in the development phase at the end of 2015. In January 2014, the 00/11-17 and 02/07-19-003-38W1 producers were converted to injectors. In 2016, Tundra's intends to convert the 00/10-18 and 00/04-19-003-28W1 vertical producers and the 02/10-21 (dual leg) and 03/01-21-003-28W1 horizontal producers to injectors.

Production performance by injector pattern is summarized in Appendix B.

Any future revisions to the waterflood development or surveillance plan would be based on new production or performance response data, technical studies, or observed reservoir behavior and reserves recovery interpretations.

Waterflood EOR Operating Strategy and Performance

Water Source and Quality

Injection water for the proposed North Pierson Unit No. 1 is supplied from the Mannville formation in the 100/03-18-03-28W1 (00/03-18) well. Mannville water is pumped from the 100/03-18 source well to the Pierson 01-18-03-28W1 battery, where it is filtered and then pumped up to injection system pressure.

Injection Wellhead Pressures

Injection started in this Unit in February 2014. The average monthly wellhead injection pressure for each injector is summarized in Appendix C. Since injection in this Unit is still in the early stages, the injectors are still building up to a target injection pressure of 6300 kPa.

Reservoir Pressure

It is estimated the initial reservoir pressure of the Mission Canyon (Alida) was approximately 9.8 MPa based on early DST's collected from the initial vertical wells drilled within the proposed Unit boundary. Subsequent DST's run with additional drilling indicates pressure depletion over time with fluid withdrawal.

Where practical, Tundra is committed to collecting pressure data from newly drilled injection wells. For North Pierson Unit No. 1, pressure data taken in 2014 and 2015 from the 02/01-19, 03/01-21 and 00/12-17-003-28W1 locations is currently available. The reservoir pressures are 5741, 2348 and 5102 kPa(a), respectively.

Well Servicing

No maintenance was required on the 58 wells in North Pierson Unit No. 1 in 2015.

Waterflood Performance Discussion

At the end of 2015, North Pierson Unit No. 1 waterflood area had 2 injection patterns in place. Since water injection started in February 2014, there is no waterflood analysis that can be done at this time.

A summary table of the injector pattern(s) is presented in Appendix B. Plots of the production are presented in Appendix D for each of the injection pattern(s).

List of Appendices

Appendix A: Well List and Well Status

Appendix B: Injection Pattern Summary

Appendix C: Average Monthly Injection Pressure Summary

Appendix D: Injector Pattern Production/Injection Rates, Cumulative and VRR

Plot and Table for the following injectors:

00/11-17-003-28W1/0

02/07-19-003-28W1/0

APPENDIX A

<i>UWI</i>	<i>Surface Location</i>	<i>Type</i>	<i>Well Status</i>
102/11-15-003-28W1/2	100/15-16-003-28W1/2	Horizontal	Capable of OIL Prod
100/13-15-003-28W1/0		Vertical	Capable of OIL Prod
100/14-15-003-28W1/0	100/15-16-003-28W1/0	Horizontal	Capable of OIL Prod
100/12-16-003-28W1/0	100/11-17-003-28W1/0	Horizontal	Capable of OIL Prod
102/12-16-003-28W1/0	102/15-16-003-28W1/2	Horizontal	Capable of OIL Prod
100/14-16-003-28W1/0		Vertical	ABD Producer
100/16-16-003-28W1/0		Vertical	ABD Producer
100/09-17-003-28W1/2	100/14-17-003-28W1/0	Horizontal	Capable of OIL Prod
100/10-17-003-28W1/0		Vertical	Capable of OIL Prod
100/11-17-003-28W1/0	100/16-18-003-28W1/0	Horizontal	WTR Injection
100/12-17-003-28W1/0	100/15-18-003-28W1/0	Horizontal	Capable of OIL Prod
100/13-17-003-28W1/0		Vertical	Capable of OIL Prod
100/14-17-003-28W1/0		Vertical	ABD Producer
100/15-17-003-28W1/0	100/14-17-003-28W1/0	Horizontal	Capable of OIL Prod
100/16-17-003-28W1/2	100/15-16-003-28W1/0	Horizontal	Capable of OIL Prod
100/06-18-003-28W1/0		Vertical	Capable of OIL Prod
100/07-18-003-28W1/0		Vertical	ABD Producer
100/08-18-003-28W1/0		Vertical	ABD Producer
100/09-18-003-28W1/0		Vertical	ABD Producer
102/09-18-003-28W1/0		Vertical	ABD Producer
100/10-18-003-28W1/0		Vertical	Capable of OIL Prod
100/11-18-003-28W1/0		Vertical	Capable of OIL Prod
100/12-18-003-28W1/0		Vertical	ABD Producer
102/12-18-003-28W1/2	100/07-18-003-28W1/0	Horizontal	Capable of OIL Prod
102/13-18-003-28W1/3	100/07-18-003-28W1/0	Horizontal	Capable of OIL Prod
100/14-18-003-28W1/0	100/07-18-003-28W1/0	Horizontal	Capable of OIL Prod
100/16-18-003-28W1/0		Vertical	ABD Producer
100/01-19-003-28W1/0	100/01-19-003-28W1/0	Dir/Dev	ABD Producer
102/01-19-003-28W1/0	102/15-17-003-28W1/0	Horizontal	Capable of OIL Prod
100/02-19-003-28W1/0		Vertical	Capable of OIL Prod
100/03-19-003-28W1/0		Vertical	Capable of OIL Prod
100/04-19-003-28W1/0		Vertical	Capable of OIL Prod
102/05-19-003-28W1/0	100/14-18-003-28W1/0	Horizontal	Capable of OIL Prod
100/06-19-003-28W1/2	100/14-18-003-28W1/0	Horizontal	Capable of OIL Prod
100/07-19-003-28W1/0		Vertical	ABD Producer
102/07-19-003-28W1/0	100/14-18-003-28W1/0	Horizontal	WTR Injection
102/07-19-003-28W1/2	100/15-18-003-28W1/0	Horizontal	Capable of OIL Prod
100/08-19-003-28W1/0		Vertical	ABD Producer
102/08-19-003-28W1/0	100/15-18-003-28W1/0	Horizontal	Capable of OIL Prod
103/08-19-003-28W1/2	103/15-17-003-28W1/2	Horizontal	Completing
100/01-20-003-28W1/2		Vertical	ABD Producer
100/05-20-003-28W1/0		Vertical	Capable of OIL Prod
100/07-20-003-28W1/2	100/15-17-003-28W1/0	Horizontal	Capable of OIL Prod
100/11-20-003-28W1/0	100/15-17-003-28W1/0	Horizontal	Capable of OIL Prod
102/11-20-003-28W1/2	100/04-20-003-28W1/0	Horizontal	Capable of OIL Prod
100/13-20-003-28W1/0	100/04-20-003-28W1/0	Horizontal	Capable of OIL Prod
100/14-20-003-28W1/0		Vertical	Waiting On Service Rig
100/16-20-003-28W1/2	100/01-20-003-28W1/2	Horizontal	Capable of OIL Prod
100/01-21-003-28W1/0		Vertical	Capable of OIL Prod
102/01-21-003-28W1/0	100/03-21-003-28W1/0	Horizontal	Capable of OIL Prod
103/01-21-003-28W1/0	103/01-20-003-28W1/0	Horizontal	Completing
100/02-21-003-28W1/0		Vertical	ABD Producer
100/03-21-003-28W1/0		Vertical	Capable of OIL Prod
102/04-21-003-28W1/0		Vertical	ABD Producer
100/09-21-003-28W1/2	100/03-21-003-28W1/2	Horizontal	Capable of OIL Prod
102/10-21-003-28W1/0	100/04-21-003-28W1/0	Horizontal	Capable of OIL Prod
100/12-21-003-28W1/0	100/01-20-003-28W1/0	Horizontal	Capable of OIL Prod
100/14-21-003-28W1/2	100/04-21-003-28W1/0	Horizontal	Capable of OIL Prod

Appendix B

North Pierson Unit No. 1 Pattern Summary as of December 2015

Pattern Name	Injector Location (003-28W1)	Status	No. of Supported Wells	Supported Wells (003-28W1)	Allocation Factor	Pattern Prod Start Month	Inj Start Month	Oil Rate (m ³ /d)	Water Rate (m ³ /d)	WOR (m ³ /m ³)	Water Injection (m ³ /d)	Cum Oil (E ³ m ³)	Cum Water (E ³ m ³)	Cum Inj Water (E ³ m ³)	Monthly VRR	Cum VRR
00/11-17-003-28 Injector	00/16-18	WTR Injection	7	00/09-18 00/12-16, 00/10-17, 00/15-17 02/01-19 00/13-17, 00/16-18	0.0 0.2 0.5 0.8	Nov 1965	Feb 2014	363	13.86	3.82	43.5	80.2	85.9	24.6	2.4	0.13
02/07-19-003-28 Injector	00/14-18	WTR Injection	8	00/08-19 02/05-19, 00/06-19/2, 02/07-19/2, 02/08-19 00/02-19, 00/03-19, 00/07-19	0.0 0.25 0.7	Feb 1968	Feb 2014	217	22.90	10.56	48.0	35.0	73.7	24.5	1.9	0.21

Appendix C

Average Monthly Injection Pressures (kPa)

Month	Injection Pressure	
	100/11-17	102/07-19
Jan-14		
Feb-14	76	78
Mar-14	91	93
Apr-14	89	50
May-14	28	-3
Jun-14	0	-73
Jul-14	-6	-37
Aug-14	-53	-65
Sep-14	-88	-90
Oct-14	-89	745
Nov-14	-85	1981
Dec-14	-86	2000
Jan-15	-85	2094
Feb-15	-80	2829
Mar-15	-60	2996
Apr-15	428	3000
May-15	807	3000
Jun-15	1345	2992
Jul-15	1765	2990
Aug-15	2059	2985
Sep-15	1997	2991
Oct-15	2000	2997
Nov-15	2001	2993
Dec-15	2000	2976

Appendix D
Rates and VRR Plots

Oil Formation Vol Factor : 1.24000 m3/m3 Pattern: 11-17-003-28Inj Set: NPU#1

Water Formation Vol Factor : 1.00000 m3/m3

March 29, 2016

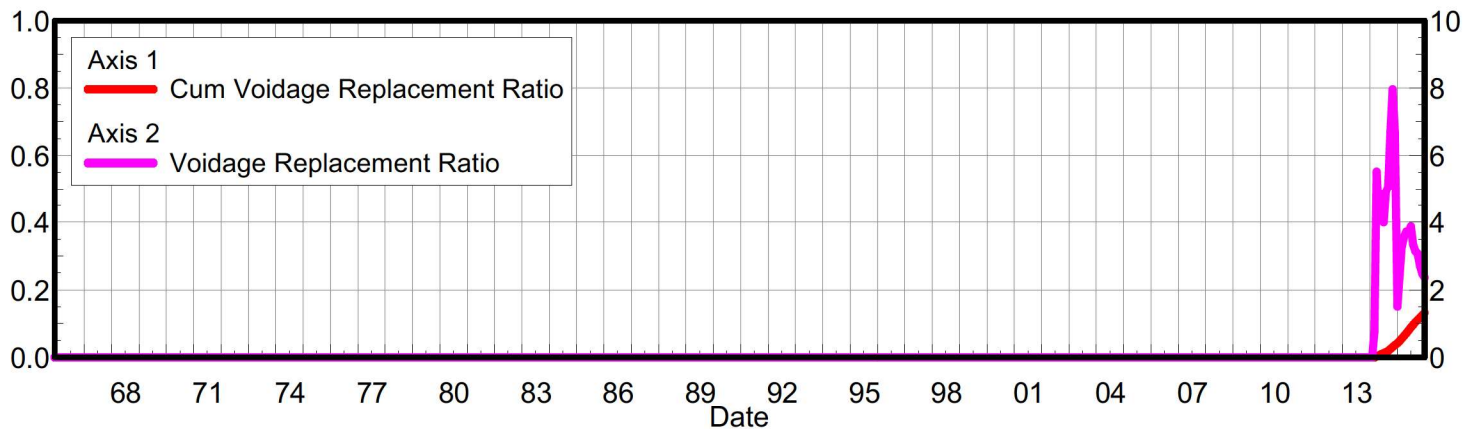
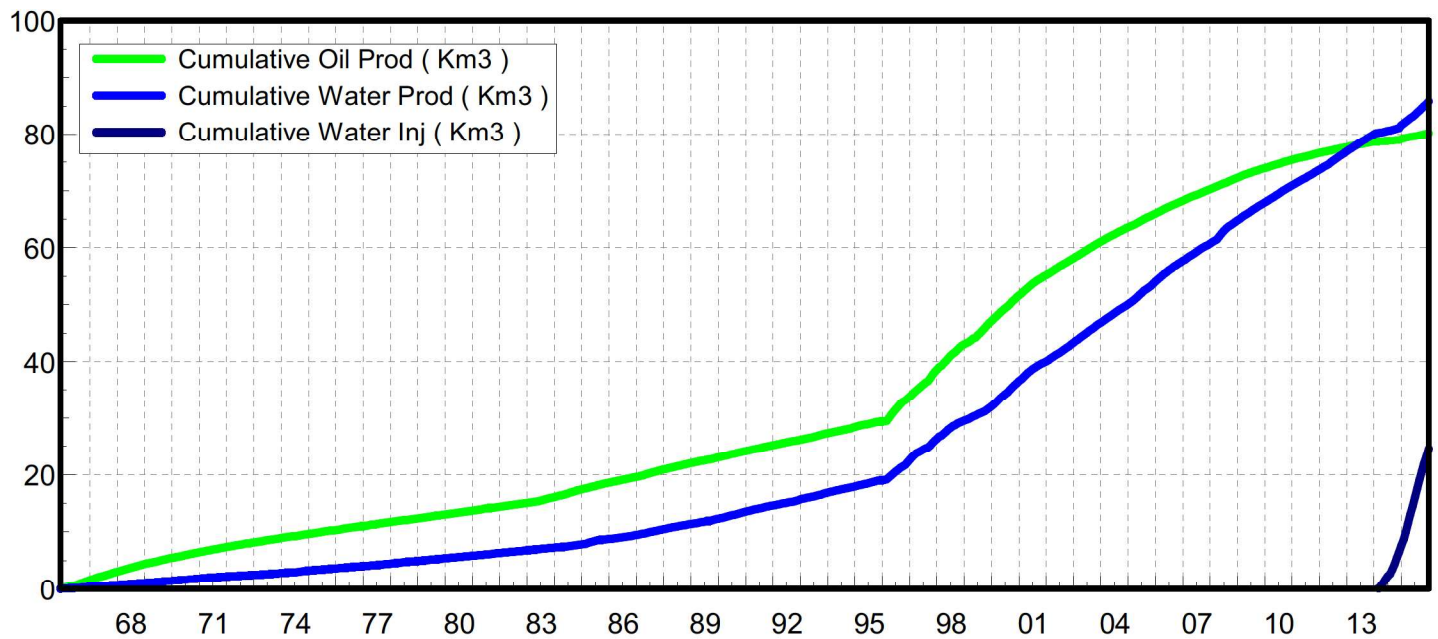
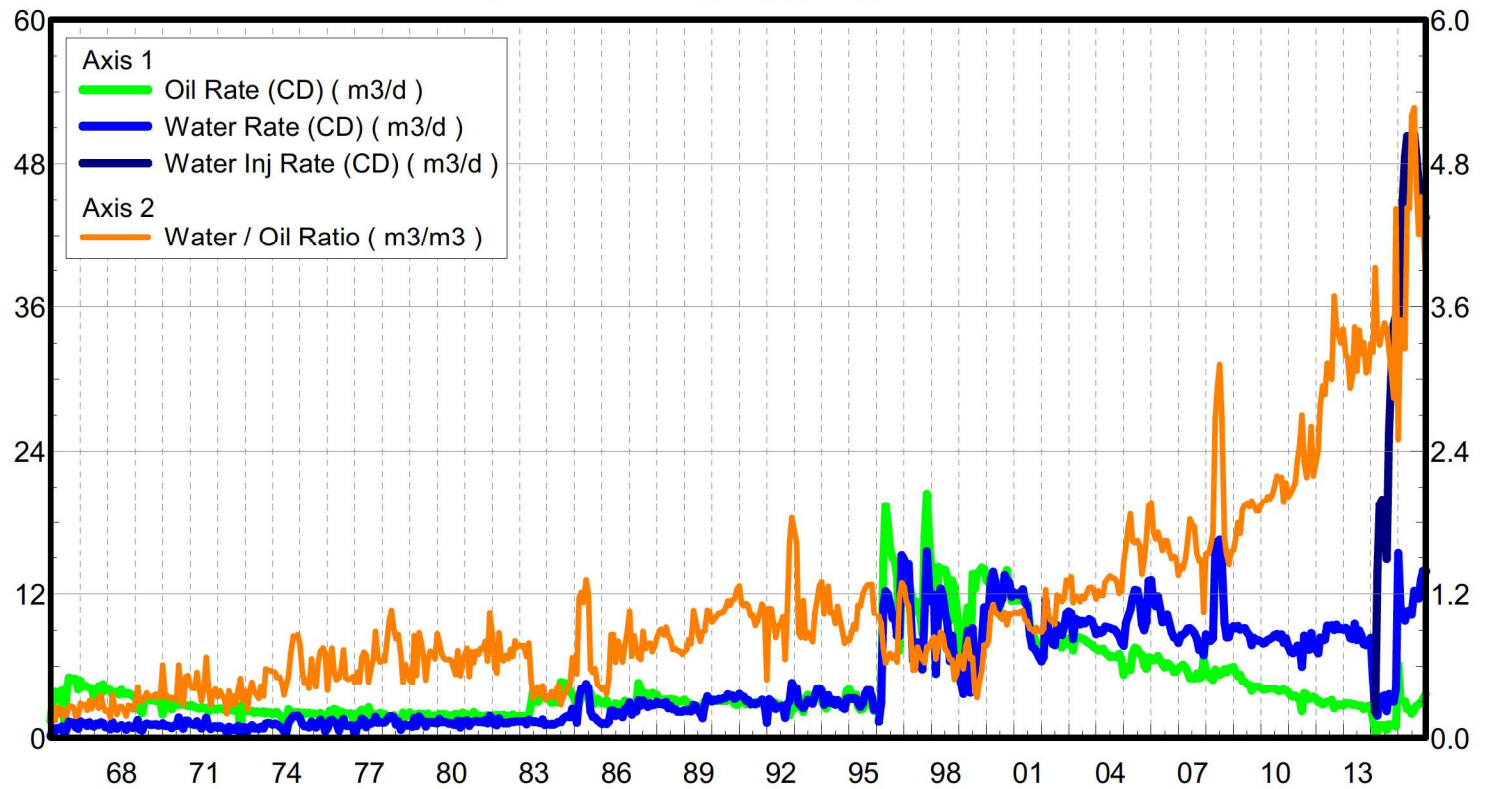
Water / Oil Ratio : 3.82 m3/m3

Operator: TUNDRA_OIL_&_GAS_LIMITED

Oil Rate (CD) : 3.63 m3/d

Water Rate (CD) : 13.86 m3/d

Water Inj Rate (CD) : 43.52 m3/d



Date	Oil Rate (CD) m3/d	Water Rate (CD) m3/d	Water Oil Ratio m3/m3	Water Inj Rate (CD) m3/d	Cum Oil Prod Km3	Cum Water Prod Km3	Cum Water Inj Km3	VRR	Cum VRR
11/30/1965	1.41	0.15	0.10		0.04	0.00	0.00	0.000	0.000
12/31/1965	3.42	0.80	0.23		0.15	0.03	0.00	0.000	0.000
1/31/1966	3.82	0.55	0.14		0.27	0.05	0.00	0.000	0.000
2/28/1966	3.15	0.80	0.25		0.36	0.07	0.00	0.000	0.000
3/31/1966	3.72	0.71	0.19		0.47	0.09	0.00	0.000	0.000
4/30/1966	3.94	0.92	0.23		0.59	0.12	0.00	0.000	0.000
5/31/1966	1.03	0.19	0.18		0.62	0.12	0.00	0.000	0.000
6/30/1966	3.95	0.76	0.19		0.74	0.15	0.00	0.000	0.000
7/31/1966	5.08	1.32	0.26		0.90	0.19	0.00	0.000	0.000
8/31/1966	4.78	1.25	0.26		1.04	0.23	0.00	0.000	0.000
9/30/1966	4.99	1.26	0.25		1.19	0.26	0.00	0.000	0.000
10/31/1966	4.96	0.88	0.18		1.35	0.29	0.00	0.000	0.000
11/30/1966	4.03	0.75	0.19		1.47	0.31	0.00	0.000	0.000
12/31/1966	4.80	1.36	0.28		1.62	0.36	0.00	0.000	0.000
1/31/1967	4.25	1.14	0.27		1.75	0.39	0.00	0.000	0.000
2/28/1967	4.39	1.20	0.27		1.87	0.43	0.00	0.000	0.000
3/31/1967	4.26	0.98	0.23		2.00	0.46	0.00	0.000	0.000
4/30/1967	4.20	1.29	0.31		2.13	0.49	0.00	0.000	0.000
5/31/1967	4.14	1.00	0.24		2.26	0.53	0.00	0.000	0.000
6/30/1967	3.30	0.94	0.28		2.36	0.55	0.00	0.000	0.000
7/31/1967	3.68	1.18	0.32		2.47	0.59	0.00	0.000	0.000
8/31/1967	4.35	1.07	0.24		2.61	0.62	0.00	0.000	0.000
9/30/1967	3.62	1.27	0.35		2.72	0.66	0.00	0.000	0.000
10/31/1967	4.51	1.19	0.26		2.86	0.70	0.00	0.000	0.000
11/30/1967	3.96	0.88	0.22		2.97	0.72	0.00	0.000	0.000
12/31/1967	4.05	0.92	0.23		3.10	0.75	0.00	0.000	0.000
1/31/1968	3.98	0.68	0.17		3.22	0.77	0.00	0.000	0.000
2/29/1968	3.57	1.26	0.35		3.33	0.81	0.00	0.000	0.000
3/31/1968	3.76	0.94	0.25		3.44	0.84	0.00	0.000	0.000
4/30/1968	3.83	0.74	0.19		3.56	0.86	0.00	0.000	0.000
5/31/1968	3.61	0.92	0.25		3.67	0.89	0.00	0.000	0.000
6/30/1968	4.01	1.04	0.26		3.79	0.92	0.00	0.000	0.000
7/31/1968	3.67	0.84	0.23		3.90	0.95	0.00	0.000	0.000
8/31/1968	3.68	0.66	0.18		4.02	0.97	0.00	0.000	0.000
9/30/1968	3.71	1.00	0.27		4.13	1.00	0.00	0.000	0.000
10/31/1968	3.59	0.93	0.26		4.24	1.03	0.00	0.000	0.000
11/30/1968	3.48	0.81	0.23		4.35	1.05	0.00	0.000	0.000
12/31/1968	3.29	1.00	0.30		4.45	1.08	0.00	0.000	0.000
1/31/1969	3.40	1.45	0.43		4.55	1.13	0.00	0.000	0.000
2/28/1969	2.25	0.67	0.30		4.62	1.15	0.00	0.000	0.000
3/31/1969	2.04	0.61	0.30		4.68	1.16	0.00	0.000	0.000
4/30/1969	3.14	1.05	0.33		4.77	1.20	0.00	0.000	0.000
5/31/1969	3.13	1.17	0.37		4.87	1.23	0.00	0.000	0.000
6/30/1969	3.23	1.12	0.35		4.97	1.27	0.00	0.000	0.000
7/31/1969	3.13	1.05	0.34		5.06	1.30	0.00	0.000	0.000
8/31/1969	3.09	1.09	0.35		5.16	1.33	0.00	0.000	0.000

Date	Oil Rate (CD) m3/d	Water Rate (CD) m3/d	Water Oil Ratio m3/m3	Water Inj Rate (CD) m3/d	Cum Oil Prod Km3	Cum Water Prod Km3	Cum Water Inj Km3	VRR	Cum VRR
9/30/1969	3.07	1.11	0.36		5.25	1.37	0.00	0.000	0.000
10/31/1969	3.00	1.00	0.33		5.34	1.40	0.00	0.000	0.000
11/30/1969	2.96	1.04	0.35		5.43	1.43	0.00	0.000	0.000
12/31/1969	1.93	1.18	0.61		5.49	1.46	0.00	0.000	0.000
1/31/1970	2.91	0.99	0.34		5.58	1.49	0.00	0.000	0.000
2/28/1970	2.89	1.01	0.35		5.66	1.52	0.00	0.000	0.000
3/31/1970	2.89	0.94	0.33		5.75	1.55	0.00	0.000	0.000
4/30/1970	2.36	0.78	0.33		5.83	1.58	0.00	0.000	0.000
5/31/1970	2.98	0.97	0.33		5.92	1.61	0.00	0.000	0.000
6/30/1970	3.14	0.97	0.31		6.01	1.64	0.00	0.000	0.000
7/31/1970	2.71	1.66	0.61		6.10	1.69	0.00	0.000	0.000
8/31/1970	2.78	1.17	0.42		6.18	1.72	0.00	0.000	0.000
9/30/1970	2.74	0.74	0.27		6.26	1.75	0.00	0.000	0.000
10/31/1970	2.69	1.39	0.51		6.35	1.79	0.00	0.000	0.000
11/30/1970	2.63	1.37	0.52		6.43	1.83	0.00	0.000	0.000
12/31/1970	2.66	1.16	0.44		6.51	1.87	0.00	0.000	0.000
1/31/1971	2.66	1.11	0.42		6.59	1.90	0.00	0.000	0.000
2/28/1971	2.57	1.06	0.41		6.66	1.93	0.00	0.000	0.000
3/31/1971	2.48	1.36	0.55		6.74	1.97	0.00	0.000	0.000
4/30/1971	2.43	1.01	0.42		6.81	2.00	0.00	0.000	0.000
5/31/1971	2.51	0.77	0.30		6.89	2.03	0.00	0.000	0.000
6/30/1971	2.46	1.02	0.41		6.97	2.06	0.00	0.000	0.000
7/31/1971	2.42	1.64	0.68		7.04	2.11	0.00	0.000	0.000
8/31/1971	2.16	0.92	0.43		7.11	2.14	0.00	0.000	0.000
9/30/1971	2.63	0.71	0.27		7.19	2.16	0.00	0.000	0.000
10/31/1971	2.43	0.91	0.37		7.26	2.19	0.00	0.000	0.000
11/30/1971	2.33	0.95	0.41		7.33	2.21	0.00	0.000	0.000
12/31/1971	2.39	0.82	0.34		7.41	2.24	0.00	0.000	0.000
1/31/1972	2.43	0.94	0.39		7.48	2.27	0.00	0.000	0.000
2/29/1972	2.38	0.83	0.35		7.55	2.29	0.00	0.000	0.000
3/31/1972	2.33	0.74	0.32		7.62	2.32	0.00	0.000	0.000
4/30/1972	2.27	0.45	0.20		7.69	2.33	0.00	0.000	0.000
5/31/1972	2.31	0.90	0.39		7.76	2.36	0.00	0.000	0.000
6/30/1972	2.29	0.62	0.27		7.83	2.38	0.00	0.000	0.000
7/31/1972	2.26	0.78	0.35		7.90	2.40	0.00	0.000	0.000
8/31/1972	2.21	0.63	0.29		7.97	2.42	0.00	0.000	0.000
9/30/1972	2.47	0.99	0.40		8.04	2.45	0.00	0.000	0.000
10/31/1972	0.55	0.28	0.50		8.06	2.46	0.00	0.000	0.000
11/30/1972	2.76	0.86	0.31		8.14	2.48	0.00	0.000	0.000
12/31/1972	2.22	0.86	0.39		8.21	2.51	0.00	0.000	0.000
1/31/1973	2.20	0.52	0.24		8.28	2.53	0.00	0.000	0.000
2/28/1973	2.20	0.87	0.39		8.34	2.55	0.00	0.000	0.000
3/31/1973	2.20	1.02	0.47		8.41	2.58	0.00	0.000	0.000
4/30/1973	2.06	0.78	0.38		8.47	2.61	0.00	0.000	0.000
5/31/1973	2.19	0.78	0.36		8.54	2.63	0.00	0.000	0.000
6/30/1973	2.13	0.70	0.33		8.60	2.65	0.00	0.000	0.000

Date	Oil Rate (CD) m3/d	Water Rate (CD) m3/d	Water Oil Ratio m3/m3	Water Inj Rate (CD) m3/d	Cum Oil Prod Km3	Cum Water Prod Km3	Cum Water Inj Km3	VRR	Cum VRR
7/31/1973	2.06	0.90	0.44		8.67	2.68	0.00	0.000	0.000
8/31/1973	2.18	0.76	0.35		8.74	2.70	0.00	0.000	0.000
9/30/1973	2.02	1.17	0.58		8.80	2.74	0.00	0.000	0.000
10/31/1973	2.13	1.21	0.57		8.86	2.77	0.00	0.000	0.000
11/30/1973	2.10	1.19	0.57		8.92	2.81	0.00	0.000	0.000
12/31/1973	1.95	1.09	0.56		8.99	2.84	0.00	0.000	0.000
1/31/1974	2.11	1.16	0.55		9.05	2.88	0.00	0.000	0.000
2/28/1974	2.12	1.08	0.51		9.11	2.91	0.00	0.000	0.000
3/31/1974	1.85	0.94	0.51		9.17	2.94	0.00	0.000	0.000
4/30/1974	1.68	0.78	0.47		9.22	2.96	0.00	0.000	0.000
5/31/1974	1.49	0.53	0.36		9.26	2.98	0.00	0.000	0.000
6/30/1974	0.87	0.38	0.44		9.29	2.99	0.00	0.000	0.000
7/31/1974	2.37	1.24	0.52		9.36	3.03	0.00	0.000	0.000
8/31/1974	2.17	1.53	0.70		9.43	3.08	0.00	0.000	0.000
9/30/1974	2.13	1.81	0.85		9.49	3.13	0.00	0.000	0.000
10/31/1974	2.09	1.77	0.85		9.56	3.19	0.00	0.000	0.000
11/30/1974	2.14	1.85	0.86		9.62	3.24	0.00	0.000	0.000
12/31/1974	2.09	1.63	0.78		9.69	3.29	0.00	0.000	0.000
1/31/1975	2.02	1.13	0.56		9.75	3.33	0.00	0.000	0.000
2/28/1975	2.08	0.95	0.46		9.81	3.35	0.00	0.000	0.000
3/31/1975	2.00	0.98	0.49		9.87	3.38	0.00	0.000	0.000
4/30/1975	2.06	0.85	0.41		9.93	3.41	0.00	0.000	0.000
5/31/1975	1.99	1.32	0.66		9.99	3.45	0.00	0.000	0.000
6/30/1975	1.99	0.94	0.47		10.05	3.48	0.00	0.000	0.000
7/31/1975	1.97	0.84	0.43		10.12	3.50	0.00	0.000	0.000
8/31/1975	1.95	1.24	0.64		10.18	3.54	0.00	0.000	0.000
9/30/1975	2.04	1.48	0.73		10.24	3.59	0.00	0.000	0.000
10/31/1975	1.52	1.14	0.75		10.28	3.62	0.00	0.000	0.000
11/30/1975	0.74	0.53	0.71		10.31	3.64	0.00	0.000	0.000
12/31/1975	1.91	0.76	0.40		10.37	3.66	0.00	0.000	0.000
1/31/1976	2.23	1.42	0.64		10.44	3.71	0.00	0.000	0.000
2/29/1976	1.99	1.49	0.75		10.49	3.75	0.00	0.000	0.000
3/31/1976	2.39	1.31	0.55		10.57	3.79	0.00	0.000	0.000
4/30/1976	2.33	1.14	0.49		10.64	3.82	0.00	0.000	0.000
5/31/1976	1.11	0.57	0.51		10.67	3.84	0.00	0.000	0.000
6/30/1976	2.17	1.27	0.59		10.74	3.88	0.00	0.000	0.000
7/31/1976	2.07	1.53	0.74		10.80	3.93	0.00	0.000	0.000
8/31/1976	2.00	1.01	0.51		10.86	3.96	0.00	0.000	0.000
9/30/1976	1.98	0.98	0.49		10.92	3.99	0.00	0.000	0.000
10/31/1976	2.02	1.01	0.50		10.98	4.02	0.00	0.000	0.000
11/30/1976	1.90	0.98	0.52		11.04	4.05	0.00	0.000	0.000
12/31/1976	0.17	0.08	0.46		11.05	4.05	0.00	0.000	0.000
1/31/1977	1.91	1.06	0.55		11.11	4.08	0.00	0.000	0.000
2/28/1977	2.16	1.02	0.47		11.17	4.11	0.00	0.000	0.000
3/31/1977	2.31	1.56	0.67		11.24	4.16	0.00	0.000	0.000
4/30/1977	2.05	1.47	0.72		11.30	4.20	0.00	0.000	0.000

Date	Oil Rate (CD) m3/d	Water Rate (CD) m3/d	Water Oil Ratio m3/m3	Water Inj Rate (CD) m3/d	Cum Oil Prod Km3	Cum Water Prod Km3	Cum Water Inj Km3	VRR	Cum VRR
5/31/1977	1.25	0.86	0.69		11.34	4.23	0.00	0.000	0.000
6/30/1977	2.53	1.19	0.47		11.41	4.27	0.00	0.000	0.000
7/31/1977	1.98	1.16	0.58		11.48	4.30	0.00	0.000	0.000
8/31/1977	1.93	1.27	0.66		11.54	4.34	0.00	0.000	0.000
9/30/1977	1.93	1.72	0.89		11.59	4.39	0.00	0.000	0.000
10/31/1977	1.81	1.25	0.69		11.65	4.43	0.00	0.000	0.000
11/30/1977	2.03	1.30	0.64		11.71	4.47	0.00	0.000	0.000
12/31/1977	1.94	1.26	0.65		11.77	4.51	0.00	0.000	0.000
1/31/1978	1.97	1.27	0.65		11.83	4.55	0.00	0.000	0.000
2/28/1978	1.83	1.45	0.79		11.88	4.59	0.00	0.000	0.000
3/31/1978	1.79	1.75	0.98		11.94	4.64	0.00	0.000	0.000
4/30/1978	1.68	1.78	1.06		11.99	4.70	0.00	0.000	0.000
5/31/1978	1.86	1.69	0.91		12.05	4.75	0.00	0.000	0.000
6/30/1978	1.31	1.09	0.83		12.09	4.78	0.00	0.000	0.000
7/31/1978	1.57	1.36	0.86		12.13	4.83	0.00	0.000	0.000
8/31/1978	0.94	0.67	0.71		12.16	4.85	0.00	0.000	0.000
9/30/1978	2.06	0.96	0.46		12.23	4.87	0.00	0.000	0.000
10/31/1978	1.76	1.09	0.62		12.28	4.91	0.00	0.000	0.000
11/30/1978	1.81	1.01	0.56		12.33	4.94	0.00	0.000	0.000
12/31/1978	2.09	1.02	0.49		12.40	4.97	0.00	0.000	0.000
1/31/1979	1.94	0.90	0.46		12.46	5.00	0.00	0.000	0.000
2/28/1979	1.90	1.62	0.86		12.51	5.04	0.00	0.000	0.000
3/31/1979	1.86	0.98	0.53		12.57	5.07	0.00	0.000	0.000
4/30/1979	1.99	1.75	0.88		12.63	5.13	0.00	0.000	0.000
5/31/1979	1.90	1.52	0.80		12.69	5.17	0.00	0.000	0.000
6/30/1979	1.96	1.35	0.69		12.75	5.21	0.00	0.000	0.000
7/31/1979	1.90	0.93	0.49		12.81	5.24	0.00	0.000	0.000
8/31/1979	2.00	1.30	0.65		12.87	5.28	0.00	0.000	0.000
9/30/1979	1.74	1.26	0.73		12.92	5.32	0.00	0.000	0.000
10/31/1979	1.77	1.26	0.71		12.98	5.36	0.00	0.000	0.000
11/30/1979	1.83	1.22	0.67		13.03	5.40	0.00	0.000	0.000
12/31/1979	1.37	1.19	0.87		13.07	5.43	0.00	0.000	0.000
1/31/1980	1.97	1.57	0.80		13.13	5.48	0.00	0.000	0.000
2/29/1980	1.84	1.29	0.70		13.19	5.52	0.00	0.000	0.000
3/31/1980	1.96	1.31	0.67		13.25	5.56	0.00	0.000	0.000
4/30/1980	1.92	1.26	0.66		13.31	5.60	0.00	0.000	0.000
5/31/1980	1.78	1.18	0.66		13.36	5.63	0.00	0.000	0.000
6/30/1980	1.84	1.20	0.65		13.42	5.67	0.00	0.000	0.000
7/31/1980	1.82	1.08	0.59		13.47	5.70	0.00	0.000	0.000
8/31/1980	1.96	1.05	0.53		13.53	5.74	0.00	0.000	0.000
9/30/1980	1.94	1.41	0.73		13.59	5.78	0.00	0.000	0.000
10/31/1980	1.63	0.85	0.52		13.64	5.81	0.00	0.000	0.000
11/30/1980	2.07	1.34	0.65		13.70	5.85	0.00	0.000	0.000
12/31/1980	1.90	1.33	0.70		13.76	5.89	0.00	0.000	0.000
1/31/1981	1.92	1.44	0.75		13.82	5.93	0.00	0.000	0.000
2/28/1981	1.89	0.98	0.52		13.88	5.96	0.00	0.000	0.000

Date	Oil Rate (CD) m3/d	Water Rate (CD) m3/d	Water Oil Ratio m3/m3	Water Inj Rate (CD) m3/d	Cum Oil Prod Km3	Cum Water Prod Km3	Cum Water Inj Km3	VRR	Cum VRR
3/31/1981	1.71	1.23	0.72		13.93	6.00	0.00	0.000	0.000
4/30/1981	2.13	1.34	0.63		13.99	6.04	0.00	0.000	0.000
5/31/1981	1.90	1.38	0.73		14.05	6.08	0.00	0.000	0.000
6/30/1981	1.83	1.29	0.70		14.11	6.12	0.00	0.000	0.000
7/31/1981	1.81	1.36	0.75		14.16	6.16	0.00	0.000	0.000
8/31/1981	1.70	1.27	0.75		14.22	6.20	0.00	0.000	0.000
9/30/1981	1.81	1.46	0.81		14.27	6.24	0.00	0.000	0.000
10/31/1981	1.86	1.20	0.65		14.33	6.28	0.00	0.000	0.000
11/30/1981	1.73	1.81	1.04		14.38	6.34	0.00	0.000	0.000
12/31/1981	1.83	1.59	0.87		14.44	6.39	0.00	0.000	0.000
1/31/1982	1.83	1.11	0.61		14.49	6.42	0.00	0.000	0.000
2/28/1982	1.89	1.03	0.55		14.55	6.45	0.00	0.000	0.000
3/31/1982	1.81	1.59	0.88		14.60	6.50	0.00	0.000	0.000
4/30/1982	1.88	1.25	0.66		14.66	6.54	0.00	0.000	0.000
5/31/1982	1.88	1.22	0.65		14.72	6.57	0.00	0.000	0.000
6/30/1982	1.75	1.21	0.69		14.77	6.61	0.00	0.000	0.000
7/31/1982	1.80	1.19	0.66		14.82	6.65	0.00	0.000	0.000
8/31/1982	1.75	1.30	0.74		14.88	6.69	0.00	0.000	0.000
9/30/1982	1.90	1.30	0.68		14.94	6.73	0.00	0.000	0.000
10/31/1982	1.64	1.33	0.81		14.99	6.77	0.00	0.000	0.000
11/30/1982	1.78	1.35	0.76		15.04	6.81	0.00	0.000	0.000
12/31/1982	1.75	1.35	0.77		15.09	6.85	0.00	0.000	0.000
1/31/1983	1.75	1.34	0.77		15.15	6.89	0.00	0.000	0.000
2/28/1983	1.78	1.37	0.77		15.20	6.93	0.00	0.000	0.000
3/31/1983	1.61	1.10	0.68		15.25	6.96	0.00	0.000	0.000
4/30/1983	1.87	1.49	0.79		15.30	7.01	0.00	0.000	0.000
5/31/1983	2.73	1.35	0.49		15.39	7.05	0.00	0.000	0.000
6/30/1983	3.98	1.31	0.33		15.51	7.09	0.00	0.000	0.000
7/31/1983	3.50	1.33	0.38		15.62	7.13	0.00	0.000	0.000
8/31/1983	2.99	1.27	0.43		15.71	7.17	0.00	0.000	0.000
9/30/1983	3.43	1.23	0.36		15.81	7.21	0.00	0.000	0.000
10/31/1983	3.46	1.51	0.44		15.92	7.25	0.00	0.000	0.000
11/30/1983	3.29	1.06	0.32		16.02	7.29	0.00	0.000	0.000
12/31/1983	3.25	1.14	0.35		16.12	7.32	0.00	0.000	0.000
1/31/1984	3.26	1.10	0.34		16.22	7.36	0.00	0.000	0.000
2/29/1984	2.91	1.11	0.38		16.31	7.39	0.00	0.000	0.000
3/31/1984	3.34	1.12	0.33		16.41	7.42	0.00	0.000	0.000
4/30/1984	2.97	1.19	0.40		16.50	7.46	0.00	0.000	0.000
5/31/1984	2.97	1.31	0.44		16.59	7.50	0.00	0.000	0.000
6/30/1984	4.70	1.29	0.27		16.73	7.54	0.00	0.000	0.000
7/31/1984	4.58	1.57	0.34		16.87	7.59	0.00	0.000	0.000
8/31/1984	4.60	1.72	0.37		17.02	7.64	0.00	0.000	0.000
9/30/1984	4.29	1.80	0.42		17.14	7.69	0.00	0.000	0.000
10/31/1984	3.83	1.71	0.45		17.26	7.75	0.00	0.000	0.000
11/30/1984	3.57	2.40	0.67		17.37	7.82	0.00	0.000	0.000
12/31/1984	3.27	2.12	0.65		17.47	7.88	0.00	0.000	0.000

Date	Oil Rate (CD) m3/d	Water Rate (CD) m3/d	Water Oil Ratio m3/m3	Water Inj Rate (CD) m3/d	Cum Oil Prod Km3	Cum Water Prod Km3	Cum Water Inj Km3	VRR	Cum VRR
1/31/1985	2.31	1.24	0.54		17.54	7.92	0.00	0.000	0.000
2/28/1985	2.85	3.31	1.16		17.62	8.01	0.00	0.000	0.000
3/31/1985	3.37	4.08	1.21		17.73	8.14	0.00	0.000	0.000
4/30/1985	3.58	4.05	1.13		17.83	8.26	0.00	0.000	0.000
5/31/1985	3.45	4.54	1.32		17.94	8.40	0.00	0.000	0.000
6/30/1985	3.43	4.17	1.21		18.04	8.53	0.00	0.000	0.000
7/31/1985	3.73	2.16	0.58		18.16	8.59	0.00	0.000	0.000
8/31/1985	3.11	1.72	0.55		18.26	8.65	0.00	0.000	0.000
9/30/1985	2.85	1.66	0.58		18.34	8.70	0.00	0.000	0.000
10/31/1985	3.23	1.43	0.44		18.44	8.74	0.00	0.000	0.000
11/30/1985	3.02	1.29	0.43		18.53	8.78	0.00	0.000	0.000
12/31/1985	2.85	1.15	0.40		18.62	8.82	0.00	0.000	0.000
1/31/1986	2.89	1.20	0.42		18.71	8.85	0.00	0.000	0.000
2/28/1986	3.11	1.13	0.36		18.80	8.89	0.00	0.000	0.000
3/31/1986	2.67	1.32	0.49		18.88	8.93	0.00	0.000	0.000
4/30/1986	2.63	2.27	0.86		18.96	8.99	0.00	0.000	0.000
5/31/1986	2.58	2.24	0.87		19.04	9.06	0.00	0.000	0.000
6/30/1986	2.84	1.80	0.63		19.12	9.12	0.00	0.000	0.000
7/31/1986	2.60	2.10	0.81		19.21	9.18	0.00	0.000	0.000
8/31/1986	2.77	2.02	0.73		19.29	9.25	0.00	0.000	0.000
9/30/1986	2.66	1.70	0.64		19.37	9.30	0.00	0.000	0.000
10/31/1986	3.07	2.37	0.77		19.47	9.37	0.00	0.000	0.000
11/30/1986	2.86	2.49	0.87		19.55	9.44	0.00	0.000	0.000
12/31/1986	2.78	2.93	1.05		19.64	9.54	0.00	0.000	0.000
1/31/1987	2.80	1.93	0.69		19.72	9.60	0.00	0.000	0.000
2/28/1987	2.81	2.40	0.85		19.80	9.66	0.00	0.000	0.000
3/31/1987	2.92	2.19	0.75		19.89	9.73	0.00	0.000	0.000
4/30/1987	4.61	3.13	0.68		20.03	9.82	0.00	0.000	0.000
5/31/1987	4.03	2.66	0.66		20.16	9.91	0.00	0.000	0.000
6/30/1987	3.48	3.09	0.89		20.26	10.00	0.00	0.000	0.000
7/31/1987	3.71	2.77	0.75		20.38	10.08	0.00	0.000	0.000
8/31/1987	3.28	2.57	0.78		20.48	10.16	0.00	0.000	0.000
9/30/1987	3.59	2.85	0.79		20.59	10.25	0.00	0.000	0.000
10/31/1987	3.73	2.70	0.72		20.70	10.33	0.00	0.000	0.000
11/30/1987	3.59	2.75	0.77		20.81	10.42	0.00	0.000	0.000
12/31/1987	3.57	2.99	0.84		20.92	10.51	0.00	0.000	0.000
1/31/1988	3.14	2.82	0.90		21.02	10.60	0.00	0.000	0.000
2/29/1988	3.10	2.82	0.91		21.11	10.68	0.00	0.000	0.000
3/31/1988	3.18	2.73	0.86		21.21	10.76	0.00	0.000	0.000
4/30/1988	3.19	2.95	0.92		21.30	10.85	0.00	0.000	0.000
5/31/1988	2.86	2.45	0.86		21.39	10.93	0.00	0.000	0.000
6/30/1988	3.22	2.64	0.82		21.49	11.01	0.00	0.000	0.000
7/31/1988	3.21	2.38	0.74		21.59	11.08	0.00	0.000	0.000
8/31/1988	3.13	2.35	0.75		21.68	11.15	0.00	0.000	0.000
9/30/1988	2.93	2.15	0.73		21.77	11.22	0.00	0.000	0.000
10/31/1988	3.02	2.19	0.73		21.86	11.29	0.00	0.000	0.000

Date	Oil Rate (CD) m3/d	Water Rate (CD) m3/d	Water Oil Ratio m3/m3	Water Inj Rate (CD) m3/d	Cum Oil Prod Km3	Cum Water Prod Km3	Cum Water Inj Km3	VRR	Cum VRR
11/30/1988	3.07	2.15	0.70		21.96	11.35	0.00	0.000	0.000
12/31/1988	3.18	2.29	0.72		22.06	11.42	0.00	0.000	0.000
1/31/1989	2.95	2.20	0.75		22.15	11.49	0.00	0.000	0.000
2/28/1989	2.81	2.31	0.82		22.23	11.55	0.00	0.000	0.000
3/31/1989	2.77	2.18	0.79		22.31	11.62	0.00	0.000	0.000
4/30/1989	2.56	2.71	1.06		22.39	11.70	0.00	0.000	0.000
5/31/1989	2.70	2.62	0.97		22.47	11.78	0.00	0.000	0.000
6/30/1989	2.61	2.27	0.87		22.55	11.85	0.00	0.000	0.000
7/31/1989	2.51	2.03	0.81		22.63	11.92	0.00	0.000	0.000
8/31/1989	1.82	1.62	0.89		22.68	11.97	0.00	0.000	0.000
9/30/1989	3.05	2.73	0.90		22.78	12.05	0.00	0.000	0.000
10/31/1989	3.24	3.45	1.06		22.88	12.15	0.00	0.000	0.000
11/30/1989	3.06	3.22	1.05		22.97	12.25	0.00	0.000	0.000
12/31/1989	3.10	3.00	0.97		23.06	12.34	0.00	0.000	0.000
1/31/1990	3.18	3.14	0.99		23.16	12.44	0.00	0.000	0.000
2/28/1990	3.08	3.12	1.01		23.25	12.53	0.00	0.000	0.000
3/31/1990	3.07	3.19	1.04		23.34	12.63	0.00	0.000	0.000
4/30/1990	3.06	3.19	1.04		23.44	12.72	0.00	0.000	0.000
5/31/1990	3.10	3.27	1.05		23.53	12.82	0.00	0.000	0.000
6/30/1990	3.05	3.30	1.08		23.62	12.92	0.00	0.000	0.000
7/31/1990	3.17	3.62	1.14		23.72	13.04	0.00	0.000	0.000
8/31/1990	3.14	3.48	1.11		23.82	13.14	0.00	0.000	0.000
9/30/1990	3.07	3.53	1.15		23.91	13.25	0.00	0.000	0.000
10/31/1990	2.79	3.23	1.16		24.00	13.35	0.00	0.000	0.000
11/30/1990	2.73	3.38	1.24		24.08	13.45	0.00	0.000	0.000
12/31/1990	2.89	3.65	1.26		24.17	13.56	0.00	0.000	0.000
1/31/1991	3.08	3.46	1.12		24.26	13.67	0.00	0.000	0.000
2/28/1991	3.09	3.40	1.10		24.35	13.77	0.00	0.000	0.000
3/31/1991	2.77	3.10	1.12		24.44	13.86	0.00	0.000	0.000
4/30/1991	2.82	3.10	1.10		24.52	13.96	0.00	0.000	0.000
5/31/1991	2.73	2.80	1.02		24.61	14.04	0.00	0.000	0.000
6/30/1991	2.80	2.87	1.02		24.69	14.13	0.00	0.000	0.000
7/31/1991	2.95	2.77	0.94		24.78	14.21	0.00	0.000	0.000
8/31/1991	2.94	2.87	0.98		24.87	14.30	0.00	0.000	0.000
9/30/1991	2.83	2.95	1.04		24.96	14.39	0.00	0.000	0.000
10/31/1991	2.86	3.18	1.11		25.05	14.49	0.00	0.000	0.000
11/30/1991	2.66	2.87	1.08		25.13	14.58	0.00	0.000	0.000
12/31/1991	2.55	1.24	0.49		25.21	14.61	0.00	0.000	0.000
1/31/1992	2.97	3.20	1.08		25.30	14.71	0.00	0.000	0.000
2/29/1992	2.79	3.00	1.07		25.38	14.80	0.00	0.000	0.000
3/31/1992	2.97	2.83	0.95		25.47	14.89	0.00	0.000	0.000
4/30/1992	2.86	2.41	0.84		25.56	14.96	0.00	0.000	0.000
5/31/1992	2.75	2.58	0.94		25.64	15.04	0.00	0.000	0.000
6/30/1992	2.73	2.59	0.95		25.72	15.12	0.00	0.000	0.000
7/31/1992	2.61	2.64	1.01		25.80	15.20	0.00	0.000	0.000
8/31/1992	2.51	1.65	0.66		25.88	15.25	0.00	0.000	0.000

Date	Oil Rate (CD) m3/d	Water Rate (CD) m3/d	Water Oil Ratio m3/m3	Water Inj Rate (CD) m3/d	Cum Oil Prod Km3	Cum Water Prod Km3	Cum Water Inj Km3	VRR	Cum VRR
9/30/1992	2.58	2.78	1.08		25.96	15.34	0.00	0.000	0.000
10/31/1992	1.85	3.04	1.64		26.02	15.43	0.00	0.000	0.000
11/30/1992	2.51	4.62	1.84		26.09	15.57	0.00	0.000	0.000
12/31/1992	2.46	4.23	1.72		26.17	15.70	0.00	0.000	0.000
1/31/1993	2.53	4.13	1.63		26.25	15.83	0.00	0.000	0.000
2/28/1993	3.24	2.85	0.88		26.34	15.91	0.00	0.000	0.000
3/31/1993	3.13	2.63	0.84		26.44	15.99	0.00	0.000	0.000
4/30/1993	2.14	2.45	1.14		26.50	16.06	0.00	0.000	0.000
5/31/1993	3.32	2.78	0.84		26.60	16.15	0.00	0.000	0.000
6/30/1993	3.58	3.15	0.88		26.71	16.24	0.00	0.000	0.000
7/31/1993	3.45	2.92	0.85		26.82	16.33	0.00	0.000	0.000
8/31/1993	3.51	2.83	0.81		26.93	16.42	0.00	0.000	0.000
9/30/1993	3.30	3.44	1.04		27.02	16.52	0.00	0.000	0.000
10/31/1993	3.56	4.07	1.15		27.13	16.65	0.00	0.000	0.000
11/30/1993	3.30	4.17	1.26		27.23	16.78	0.00	0.000	0.000
12/31/1993	3.05	3.95	1.30		27.33	16.90	0.00	0.000	0.000
1/31/1994	2.66	2.75	1.04		27.41	16.98	0.00	0.000	0.000
2/28/1994	2.41	2.93	1.21		27.48	17.07	0.00	0.000	0.000
3/31/1994	2.82	3.55	1.26		27.57	17.18	0.00	0.000	0.000
4/30/1994	2.77	2.89	1.05		27.65	17.26	0.00	0.000	0.000
5/31/1994	3.00	3.13	1.04		27.74	17.36	0.00	0.000	0.000
6/30/1994	2.88	2.75	0.96		27.83	17.44	0.00	0.000	0.000
7/31/1994	2.86	3.13	1.09		27.92	17.54	0.00	0.000	0.000
8/31/1994	2.86	2.86	1.00		28.01	17.63	0.00	0.000	0.000
9/30/1994	2.79	2.53	0.90		28.09	17.70	0.00	0.000	0.000
10/31/1994	3.03	2.41	0.79		28.18	17.78	0.00	0.000	0.000
11/30/1994	3.91	3.25	0.83		28.30	17.88	0.00	0.000	0.000
12/31/1994	4.05	3.29	0.81		28.43	17.98	0.00	0.000	0.000
1/31/1995	3.70	3.21	0.87		28.54	18.08	0.00	0.000	0.000
2/28/1995	3.49	3.30	0.94		28.64	18.17	0.00	0.000	0.000
3/31/1995	3.58	3.26	0.91		28.75	18.27	0.00	0.000	0.000
4/30/1995	2.61	2.87	1.10		28.83	18.36	0.00	0.000	0.000
5/31/1995	2.31	2.55	1.10		28.90	18.44	0.00	0.000	0.000
6/30/1995	2.40	2.88	1.20		28.97	18.52	0.00	0.000	0.000
7/31/1995	2.96	3.69	1.24		29.06	18.64	0.00	0.000	0.000
8/31/1995	3.13	3.98	1.27		29.16	18.76	0.00	0.000	0.000
9/30/1995	3.12	3.97	1.27		29.25	18.88	0.00	0.000	0.000
10/31/1995	2.65	3.38	1.28		29.34	18.98	0.00	0.000	0.000
11/30/1995	2.22	2.31	1.04		29.40	19.05	0.00	0.000	0.000
1/31/1996	1.34	1.36	1.02		29.44	19.10	0.00	0.000	0.000
2/29/1996	3.02	2.90	0.96		29.53	19.18	0.00	0.000	0.000
3/31/1996	14.72	10.99	0.75		29.99	19.52	0.00	0.000	0.000
4/30/1996	19.37	12.21	0.63		30.57	19.89	0.00	0.000	0.000
5/31/1996	17.87	11.98	0.67		31.12	20.26	0.00	0.000	0.000
6/30/1996	15.78	11.17	0.71		31.60	20.59	0.00	0.000	0.000
7/31/1996	14.95	10.00	0.67		32.06	20.90	0.00	0.000	0.000

Date	Oil Rate (CD) m3/d	Water Rate (CD) m3/d	Water Oil Ratio m3/m3	Water Inj Rate (CD) m3/d	Cum Oil Prod Km3	Cum Water Prod Km3	Cum Water Inj Km3	VRR	Cum VRR
8/31/1996	14.68	10.22	0.70		32.51	21.22	0.00	0.000	0.000
9/30/1996	13.42	8.56	0.64		32.92	21.48	0.00	0.000	0.000
10/31/1996	7.33	8.54	1.17		33.14	21.74	0.00	0.000	0.000
11/30/1996	11.80	15.25	1.29		33.50	22.20	0.00	0.000	0.000
12/31/1996	11.77	14.79	1.26		33.86	22.66	0.00	0.000	0.000
1/31/1997	12.00	13.67	1.14		34.24	23.08	0.00	0.000	0.000
2/28/1997	13.16	14.46	1.10		34.60	23.49	0.00	0.000	0.000
3/31/1997	12.10	10.14	0.84		34.98	23.80	0.00	0.000	0.000
4/30/1997	11.35	6.48	0.57		35.32	23.99	0.00	0.000	0.000
5/31/1997	11.35	6.52	0.57		35.67	24.20	0.00	0.000	0.000
6/30/1997	10.52	8.00	0.76		35.99	24.44	0.00	0.000	0.000
7/31/1997	10.50	7.44	0.71		36.31	24.67	0.00	0.000	0.000
8/31/1997	8.73	5.76	0.66		36.58	24.85	0.00	0.000	0.000
9/30/1997	16.75	10.59	0.63		37.09	25.16	0.00	0.000	0.000
10/31/1997	20.42	15.59	0.76		37.72	25.65	0.00	0.000	0.000
11/30/1997	16.43	12.41	0.76		38.21	26.02	0.00	0.000	0.000
12/31/1997	14.09	11.37	0.81		38.65	26.37	0.00	0.000	0.000
1/31/1998	14.13	11.91	0.84		39.09	26.74	0.00	0.000	0.000
2/28/1998	8.12	5.38	0.66		39.31	26.89	0.00	0.000	0.000
3/31/1998	14.21	11.28	0.79		39.75	27.24	0.00	0.000	0.000
4/30/1998	14.07	12.43	0.88		40.18	27.61	0.00	0.000	0.000
5/31/1998	13.82	11.86	0.86		40.61	27.98	0.00	0.000	0.000
6/30/1998	13.98	10.41	0.74		41.02	28.29	0.00	0.000	0.000
7/31/1998	13.31	9.58	0.72		41.44	28.59	0.00	0.000	0.000
8/31/1998	9.80	6.47	0.66		41.74	28.79	0.00	0.000	0.000
9/30/1998	13.09	8.55	0.65		42.13	29.05	0.00	0.000	0.000
10/31/1998	12.49	6.17	0.49		42.52	29.24	0.00	0.000	0.000
11/30/1998	10.84	5.84	0.54		42.85	29.41	0.00	0.000	0.000
12/31/1998	8.03	5.51	0.69		43.09	29.58	0.00	0.000	0.000
1/31/1999	6.63	4.52	0.68		43.30	29.72	0.00	0.000	0.000
2/28/1999	6.27	3.65	0.58		43.48	29.83	0.00	0.000	0.000
3/31/1999	9.66	7.31	0.76		43.78	30.05	0.00	0.000	0.000
4/30/1999	10.86	8.96	0.82		44.10	30.32	0.00	0.000	0.000
5/31/1999	5.67	3.75	0.66		44.28	30.44	0.00	0.000	0.000
6/30/1999	13.64	9.16	0.67		44.69	30.71	0.00	0.000	0.000
7/31/1999	12.43	4.74	0.38		45.07	30.86	0.00	0.000	0.000
8/31/1999	13.72	4.61	0.34		45.50	31.00	0.00	0.000	0.000
9/30/1999	13.83	6.50	0.47		45.91	31.20	0.00	0.000	0.000
10/31/1999	14.16	8.14	0.57		46.35	31.45	0.00	0.000	0.000
11/30/1999	14.02	10.86	0.77		46.77	31.78	0.00	0.000	0.000
12/31/1999	13.12	10.16	0.77		47.18	32.09	0.00	0.000	0.000
1/31/2000	12.93	10.53	0.81		47.58	32.42	0.00	0.000	0.000
2/29/2000	12.63	13.22	1.05		47.95	32.80	0.00	0.000	0.000
3/31/2000	12.45	13.82	1.11		48.33	33.23	0.00	0.000	0.000
4/30/2000	12.41	13.03	1.05		48.70	33.62	0.00	0.000	0.000
5/31/2000	10.44	10.77	1.03		49.03	33.96	0.00	0.000	0.000

Date	Oil Rate (CD) m3/d	Water Rate (CD) m3/d	Water Oil Ratio m3/m3	Water Inj Rate (CD) m3/d	Cum Oil Prod Km3	Cum Water Prod Km3	Cum Water Inj Km3	VRR	Cum VRR
6/30/2000	11.07	11.15	1.01		49.36	34.29	0.00	0.000	0.000
7/31/2000	11.72	11.62	0.99		49.72	34.65	0.00	0.000	0.000
8/31/2000	12.98	13.56	1.04		50.12	35.07	0.00	0.000	0.000
9/30/2000	13.94	13.17	0.94		50.54	35.47	0.00	0.000	0.000
10/31/2000	12.47	12.90	1.03		50.93	35.87	0.00	0.000	0.000
11/30/2000	11.41	11.76	1.03		51.27	36.22	0.00	0.000	0.000
12/31/2000	11.60	12.10	1.04		51.63	36.59	0.00	0.000	0.000
1/31/2001	11.46	11.96	1.04		51.99	36.96	0.00	0.000	0.000
2/28/2001	11.46	11.93	1.04		52.31	37.30	0.00	0.000	0.000
3/31/2001	11.53	12.13	1.05		52.67	37.67	0.00	0.000	0.000
4/30/2001	11.67	12.38	1.06		53.02	38.05	0.00	0.000	0.000
5/31/2001	11.44	11.31	0.99		53.37	38.40	0.00	0.000	0.000
6/30/2001	11.31	11.02	0.97		53.71	38.73	0.00	0.000	0.000
7/31/2001	9.43	8.61	0.91		54.00	38.99	0.00	0.000	0.000
8/31/2001	8.45	7.64	0.91		54.26	39.23	0.00	0.000	0.000
9/30/2001	8.42	7.48	0.89		54.52	39.46	0.00	0.000	0.000
10/31/2001	7.82	7.21	0.92		54.76	39.68	0.00	0.000	0.000
11/30/2001	7.64	6.81	0.89		54.99	39.88	0.00	0.000	0.000
12/31/2001	7.29	6.45	0.88		55.21	40.08	0.00	0.000	0.000
1/31/2002	7.43	6.77	0.91		55.44	40.29	0.00	0.000	0.000
2/28/2002	9.30	11.45	1.23		55.70	40.61	0.00	0.000	0.000
3/31/2002	8.78	9.09	1.04		55.98	40.89	0.00	0.000	0.000
4/30/2002	8.70	8.56	0.98		56.24	41.15	0.00	0.000	0.000
5/31/2002	8.11	7.87	0.97		56.49	41.40	0.00	0.000	0.000
6/30/2002	8.18	7.77	0.95		56.73	41.63	0.00	0.000	0.000
7/31/2002	7.90	9.41	1.19		56.98	41.92	0.00	0.000	0.000
8/31/2002	7.71	9.05	1.17		57.22	42.20	0.00	0.000	0.000
9/30/2002	7.57	8.60	1.14		57.45	42.46	0.00	0.000	0.000
10/31/2002	8.00	9.29	1.16		57.69	42.75	0.00	0.000	0.000
11/30/2002	7.90	10.37	1.31		57.93	43.06	0.00	0.000	0.000
12/31/2002	8.30	10.52	1.27		58.19	43.38	0.00	0.000	0.000
1/31/2003	7.77	10.39	1.34		58.43	43.71	0.00	0.000	0.000
2/28/2003	7.34	8.27	1.13		58.63	43.94	0.00	0.000	0.000
3/31/2003	8.41	9.93	1.18		58.89	44.25	0.00	0.000	0.000
4/30/2003	8.43	9.83	1.17		59.15	44.54	0.00	0.000	0.000
5/31/2003	8.35	9.47	1.13		59.41	44.83	0.00	0.000	0.000
6/30/2003	8.29	9.78	1.18		59.65	45.13	0.00	0.000	0.000
7/31/2003	8.23	9.57	1.16		59.91	45.42	0.00	0.000	0.000
8/31/2003	8.03	9.73	1.21		60.16	45.73	0.00	0.000	0.000
9/30/2003	7.93	9.91	1.25		60.40	46.02	0.00	0.000	0.000
10/31/2003	7.80	9.77	1.25		60.64	46.33	0.00	0.000	0.000
11/30/2003	7.58	9.30	1.23		60.87	46.60	0.00	0.000	0.000
12/31/2003	7.50	8.68	1.16		61.10	46.87	0.00	0.000	0.000
1/31/2004	7.35	9.00	1.22		61.33	47.15	0.00	0.000	0.000
2/29/2004	7.40	8.80	1.19		61.54	47.41	0.00	0.000	0.000
3/31/2004	7.49	8.88	1.19		61.77	47.68	0.00	0.000	0.000

Date	Oil Rate (CD) m3/d	Water Rate (CD) m3/d	Water Oil Ratio m3/m3	Water Inj Rate (CD) m3/d	Cum Oil Prod Km3	Cum Water Prod Km3	Cum Water Inj Km3	VRR	Cum VRR
4/30/2004	7.18	9.30	1.30		61.99	47.96	0.00	0.000	0.000
5/31/2004	6.98	9.25	1.32		62.21	48.25	0.00	0.000	0.000
6/30/2004	6.82	9.19	1.35		62.41	48.52	0.00	0.000	0.000
7/31/2004	6.83	9.11	1.33		62.62	48.81	0.00	0.000	0.000
8/31/2004	6.82	9.04	1.33		62.83	49.09	0.00	0.000	0.000
9/30/2004	6.78	8.84	1.30		63.04	49.35	0.00	0.000	0.000
10/31/2004	7.05	8.49	1.20		63.25	49.62	0.00	0.000	0.000
11/30/2004	6.55	8.00	1.22		63.45	49.86	0.00	0.000	0.000
12/31/2004	5.31	7.72	1.46		63.62	50.10	0.00	0.000	0.000
1/31/2005	5.99	9.59	1.60		63.80	50.39	0.00	0.000	0.000
2/28/2005	5.79	10.14	1.75		63.96	50.68	0.00	0.000	0.000
3/31/2005	5.72	10.68	1.87		64.14	51.01	0.00	0.000	0.000
4/30/2005	7.11	11.69	1.64		64.35	51.36	0.00	0.000	0.000
5/31/2005	7.55	12.31	1.63		64.59	51.74	0.00	0.000	0.000
6/30/2005	7.46	12.27	1.65		64.81	52.11	0.00	0.000	0.000
7/31/2005	7.08	11.37	1.61		65.03	52.46	0.00	0.000	0.000
8/31/2005	6.97	9.50	1.36		65.25	52.76	0.00	0.000	0.000
9/30/2005	6.10	9.01	1.48		65.43	53.03	0.00	0.000	0.000
10/31/2005	5.82	9.72	1.67		65.61	53.33	0.00	0.000	0.000
11/30/2005	6.75	13.06	1.94		65.81	53.72	0.00	0.000	0.000
12/31/2005	6.68	13.12	1.96		66.02	54.13	0.00	0.000	0.000
1/31/2006	6.52	11.21	1.72		66.22	54.47	0.00	0.000	0.000
2/28/2006	6.60	10.97	1.66		66.41	54.78	0.00	0.000	0.000
3/31/2006	6.87	11.79	1.72		66.62	55.15	0.00	0.000	0.000
4/30/2006	6.54	10.79	1.65		66.82	55.47	0.00	0.000	0.000
5/31/2006	6.18	9.67	1.56		67.01	55.77	0.00	0.000	0.000
6/30/2006	5.94	9.77	1.64		67.19	56.06	0.00	0.000	0.000
7/31/2006	6.26	10.29	1.64		67.38	56.38	0.00	0.000	0.000
8/31/2006	6.17	9.56	1.55		67.57	56.68	0.00	0.000	0.000
9/30/2006	5.91	8.81	1.49		67.75	56.94	0.00	0.000	0.000
10/31/2006	5.56	8.41	1.51		67.92	57.20	0.00	0.000	0.000
11/30/2006	5.58	8.33	1.49		68.09	57.45	0.00	0.000	0.000
12/31/2006	5.88	7.97	1.36		68.27	57.70	0.00	0.000	0.000
1/31/2007	5.99	8.58	1.43		68.46	57.97	0.00	0.000	0.000
2/28/2007	6.13	8.64	1.41		68.63	58.21	0.00	0.000	0.000
3/31/2007	5.91	8.81	1.49		68.81	58.48	0.00	0.000	0.000
4/30/2007	5.53	9.14	1.65		68.98	58.75	0.00	0.000	0.000
5/31/2007	5.01	9.16	1.83		69.13	59.04	0.00	0.000	0.000
6/30/2007	5.06	9.00	1.78		69.29	59.31	0.00	0.000	0.000
7/31/2007	4.98	8.75	1.76		69.44	59.58	0.00	0.000	0.000
8/31/2007	5.42	8.28	1.53		69.61	59.84	0.00	0.000	0.000
9/30/2007	5.01	7.36	1.47		69.76	60.06	0.00	0.000	0.000
10/31/2007	5.12	7.58	1.48		69.92	60.29	0.00	0.000	0.000
11/30/2007	6.64	6.95	1.05		70.12	60.50	0.00	0.000	0.000
12/31/2007	5.64	8.66	1.54		70.29	60.77	0.00	0.000	0.000
1/31/2008	5.40	8.27	1.53		70.46	61.03	0.00	0.000	0.000

Date	Oil Rate (CD) m3/d	Water Rate (CD) m3/d	Water Oil Ratio m3/m3	Water Inj Rate (CD) m3/d	Cum Oil Prod Km3	Cum Water Prod Km3	Cum Water Inj Km3	VRR	Cum VRR
2/29/2008	5.07	8.12	1.60		70.61	61.26	0.00	0.000	0.000
3/31/2008	4.88	8.33	1.71		70.76	61.52	0.00	0.000	0.000
4/30/2008	5.73	15.26	2.66		70.93	61.98	0.00	0.000	0.000
5/31/2008	5.59	16.39	2.93		71.10	62.48	0.00	0.000	0.000
6/30/2008	5.31	16.56	3.12		71.26	62.98	0.00	0.000	0.000
7/31/2008	5.42	14.46	2.67		71.43	63.43	0.00	0.000	0.000
8/31/2008	5.76	9.62	1.67		71.61	63.73	0.00	0.000	0.000
9/30/2008	5.53	8.40	1.52		71.77	63.98	0.00	0.000	0.000
10/31/2008	5.85	8.45	1.44		71.95	64.24	0.00	0.000	0.000
11/30/2008	5.89	9.18	1.56		72.13	64.52	0.00	0.000	0.000
12/31/2008	5.94	9.33	1.57		72.32	64.81	0.00	0.000	0.000
1/31/2009	5.50	9.15	1.66		72.49	65.09	0.00	0.000	0.000
2/28/2009	5.20	9.35	1.80		72.63	65.35	0.00	0.000	0.000
3/31/2009	5.30	9.06	1.71		72.80	65.63	0.00	0.000	0.000
4/30/2009	4.80	9.13	1.90		72.94	65.91	0.00	0.000	0.000
5/31/2009	4.71	9.16	1.95		73.09	66.19	0.00	0.000	0.000
6/30/2009	4.48	8.80	1.96		73.22	66.45	0.00	0.000	0.000
7/31/2009	4.45	8.58	1.93		73.36	66.72	0.00	0.000	0.000
8/31/2009	3.93	7.78	1.98		73.48	66.96	0.00	0.000	0.000
9/30/2009	4.32	8.37	1.94		73.61	67.21	0.00	0.000	0.000
10/31/2009	4.30	8.14	1.90		73.74	67.47	0.00	0.000	0.000
11/30/2009	4.31	8.16	1.89		73.87	67.71	0.00	0.000	0.000
12/31/2009	4.15	8.08	1.94		74.00	67.96	0.00	0.000	0.000
1/31/2010	4.00	7.89	1.97		74.13	68.20	0.00	0.000	0.000
2/28/2010	4.03	7.97	1.98		74.24	68.43	0.00	0.000	0.000
3/31/2010	4.06	8.20	2.02		74.36	68.68	0.00	0.000	0.000
4/30/2010	4.14	8.27	2.00		74.49	68.93	0.00	0.000	0.000
5/31/2010	4.13	8.39	2.03		74.62	69.19	0.00	0.000	0.000
6/30/2010	4.10	8.60	2.10		74.74	69.45	0.00	0.000	0.000
7/31/2010	3.96	8.67	2.19		74.86	69.72	0.00	0.000	0.000
8/31/2010	3.87	8.40	2.17		74.98	69.98	0.00	0.000	0.000
9/30/2010	3.98	8.66	2.18		75.10	70.24	0.00	0.000	0.000
10/31/2010	4.04	7.95	1.97		75.23	70.48	0.00	0.000	0.000
11/30/2010	3.91	8.35	2.13		75.34	70.73	0.00	0.000	0.000
12/31/2010	3.78	7.63	2.02		75.46	70.97	0.00	0.000	0.000
1/31/2011	3.52	7.20	2.05		75.57	71.19	0.00	0.000	0.000
2/28/2011	3.40	7.10	2.09		75.67	71.39	0.00	0.000	0.000
3/31/2011	3.48	7.42	2.13		75.77	71.62	0.00	0.000	0.000
4/30/2011	3.33	7.73	2.32		75.87	71.85	0.00	0.000	0.000
5/31/2011	3.13	7.66	2.45		75.97	72.09	0.00	0.000	0.000
6/30/2011	2.21	5.97	2.70		76.04	72.27	0.00	0.000	0.000
7/31/2011	3.70	8.54	2.31		76.15	72.54	0.00	0.000	0.000
8/31/2011	3.59	7.81	2.18		76.26	72.78	0.00	0.000	0.000
9/30/2011	3.22	7.38	2.29		76.36	73.00	0.00	0.000	0.000
10/31/2011	3.37	8.76	2.60		76.46	73.27	0.00	0.000	0.000
11/30/2011	3.41	7.48	2.19		76.57	73.50	0.00	0.000	0.000

Date	Oil Rate (CD) m3/d	Water Rate (CD) m3/d	Water Oil Ratio m3/m3	Water Inj Rate (CD) m3/d	Cum Oil Prod Km3	Cum Water Prod Km3	Cum Water Inj Km3	VRR	Cum VRR
12/31/2011	3.28	7.54	2.30		76.67	73.73	0.00	0.000	0.000
1/31/2012	2.96	7.11	2.40		76.76	73.95	0.00	0.000	0.000
2/29/2012	3.02	8.38	2.77		76.85	74.19	0.00	0.000	0.000
3/31/2012	2.78	8.18	2.94		76.93	74.45	0.00	0.000	0.000
4/30/2012	2.87	8.24	2.87		77.02	74.69	0.00	0.000	0.000
5/31/2012	2.99	9.36	3.13		77.11	74.98	0.00	0.000	0.000
6/30/2012	3.01	9.31	3.09		77.20	75.26	0.00	0.000	0.000
7/31/2012	3.14	9.41	3.00		77.30	75.55	0.00	0.000	0.000
8/31/2012	2.45	9.04	3.69		77.38	75.83	0.00	0.000	0.000
9/30/2012	2.75	9.44	3.44		77.46	76.12	0.00	0.000	0.000
10/31/2012	2.71	9.12	3.36		77.54	76.40	0.00	0.000	0.000
11/30/2012	2.77	9.13	3.30		77.63	76.67	0.00	0.000	0.000
12/31/2012	2.65	9.05	3.41		77.71	76.96	0.00	0.000	0.000
1/31/2013	2.87	9.18	3.19		77.80	77.24	0.00	0.000	0.000
2/28/2013	2.84	9.04	3.18		77.88	77.49	0.00	0.000	0.000
3/31/2013	2.86	8.36	2.92		77.96	77.75	0.00	0.000	0.000
4/30/2013	2.75	8.28	3.01		78.05	78.00	0.00	0.000	0.000
5/31/2013	2.78	9.55	3.43		78.13	78.30	0.00	0.000	0.000
6/30/2013	2.68	8.21	3.06		78.21	78.54	0.00	0.000	0.000
7/31/2013	2.64	8.98	3.41		78.30	78.82	0.00	0.000	0.000
8/31/2013	2.67	8.57	3.21		78.38	79.09	0.00	0.000	0.000
9/30/2013	2.38	7.86	3.30		78.45	79.32	0.00	0.000	0.000
10/31/2013	2.55	7.77	3.05		78.53	79.56	0.00	0.000	0.000
11/30/2013	2.63	8.11	3.08		78.61	79.81	0.00	0.000	0.000
12/31/2013	2.54	8.36	3.29		78.69	80.07	0.00	0.000	0.000
1/31/2014	1.54	4.98	3.22		78.73	80.22	0.00	0.000	0.000
2/28/2014	0.56	2.18	3.92	2.18	78.75	80.28	0.06	0.758	0.000
3/31/2014	0.54	1.83	3.37	13.84	78.77	80.34	0.49	5.533	0.003
4/30/2014	1.01	3.33	3.28	19.50	78.80	80.44	1.08	4.249	0.006
5/31/2014	1.01	3.41	3.39	19.90	78.83	80.54	1.69	4.271	0.009
6/30/2014	1.01	3.51	3.47	19.10	78.86	80.65	2.27	4.006	0.013
7/31/2014	0.65	2.22	3.42	14.87	78.88	80.72	2.73	4.921	0.015
8/31/2014	1.12	3.63	3.25	25.42	78.91	80.83	3.51	5.068	0.020
9/30/2014	1.05	3.20	3.06	30.17	78.95	80.93	4.42	6.703	0.025
10/31/2014	1.06	3.02	2.84	34.55	78.98	81.02	5.49	7.965	0.031
11/30/2014	0.93	4.12	4.42	35.27	79.01	81.14	6.55	6.689	0.037
12/31/2014	6.19	15.44	2.49	35.03	79.20	81.62	7.63	1.516	0.042
1/31/2015	3.14	10.98	3.49	36.68	79.30	81.96	8.77	2.465	0.049
2/28/2015	3.07	10.02	3.26	45.00	79.38	82.24	10.03	3.254	0.056
3/31/2015	3.01	9.79	3.25	48.52	79.47	82.55	11.54	3.587	0.064
4/30/2015	2.38	10.54	4.44	50.30	79.55	82.86	13.04	3.728	0.072
5/31/2015	2.39	10.59	4.43	50.23	79.62	83.19	14.60	3.704	0.080
6/30/2015	1.99	10.31	5.20	49.50	79.68	83.50	16.09	3.874	0.088
7/31/2015	2.32	12.24	5.27	50.42	79.75	83.88	17.65	3.334	0.097
8/31/2015	2.64	12.18	4.60	48.61	79.83	84.26	19.16	3.146	0.105
9/30/2015	2.76	11.63	4.21	46.33	79.92	84.61	20.55	3.077	0.112

Date	Oil Rate (CD) m3/d	Water Rate (CD) m3/d	Water Oil Ratio m3/m3	Water Inj Rate (CD) m3/d	Cum Oil Prod Km3	Cum Water Prod Km3	Cum Water Inj Km3	VRR	Cum VRR
10/31/2015	2.91	13.17	4.52	45.13	80.01	85.02	21.95	2.690	0.119
11/30/2015	3.22	13.86	4.30	44.17	80.10	85.43	23.27	2.474	0.126
12/31/2015	3.63	13.86	3.82	43.52	80.22	85.86	24.62	2.371	0.133

Oil Formation Vol Factor : 1.240000 Pattern: 07-19-003-28Inj Set: NPU#1

Water Formation Vol Factor : 1.000000 m3/m3

March 29, 2016

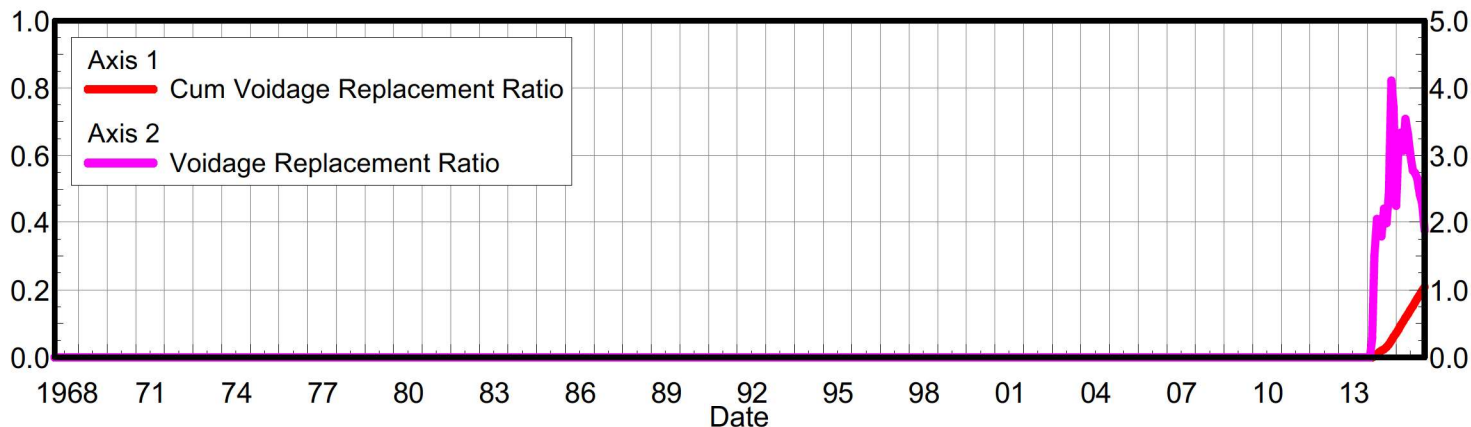
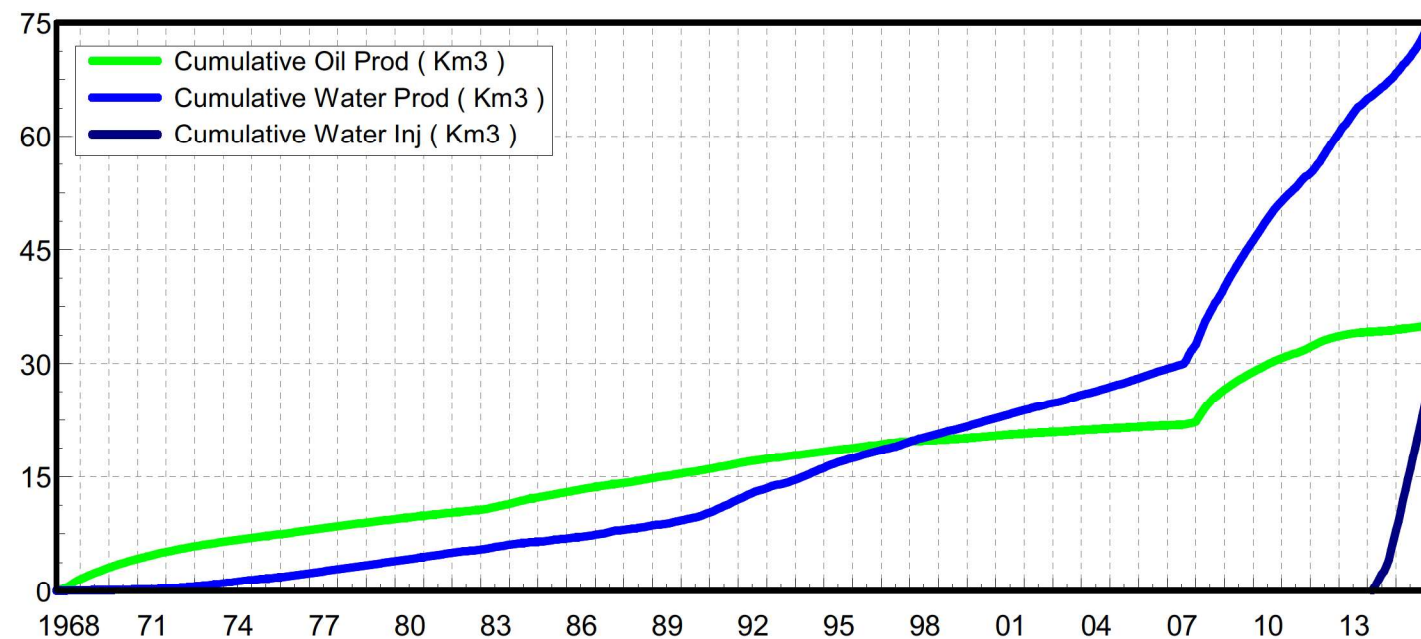
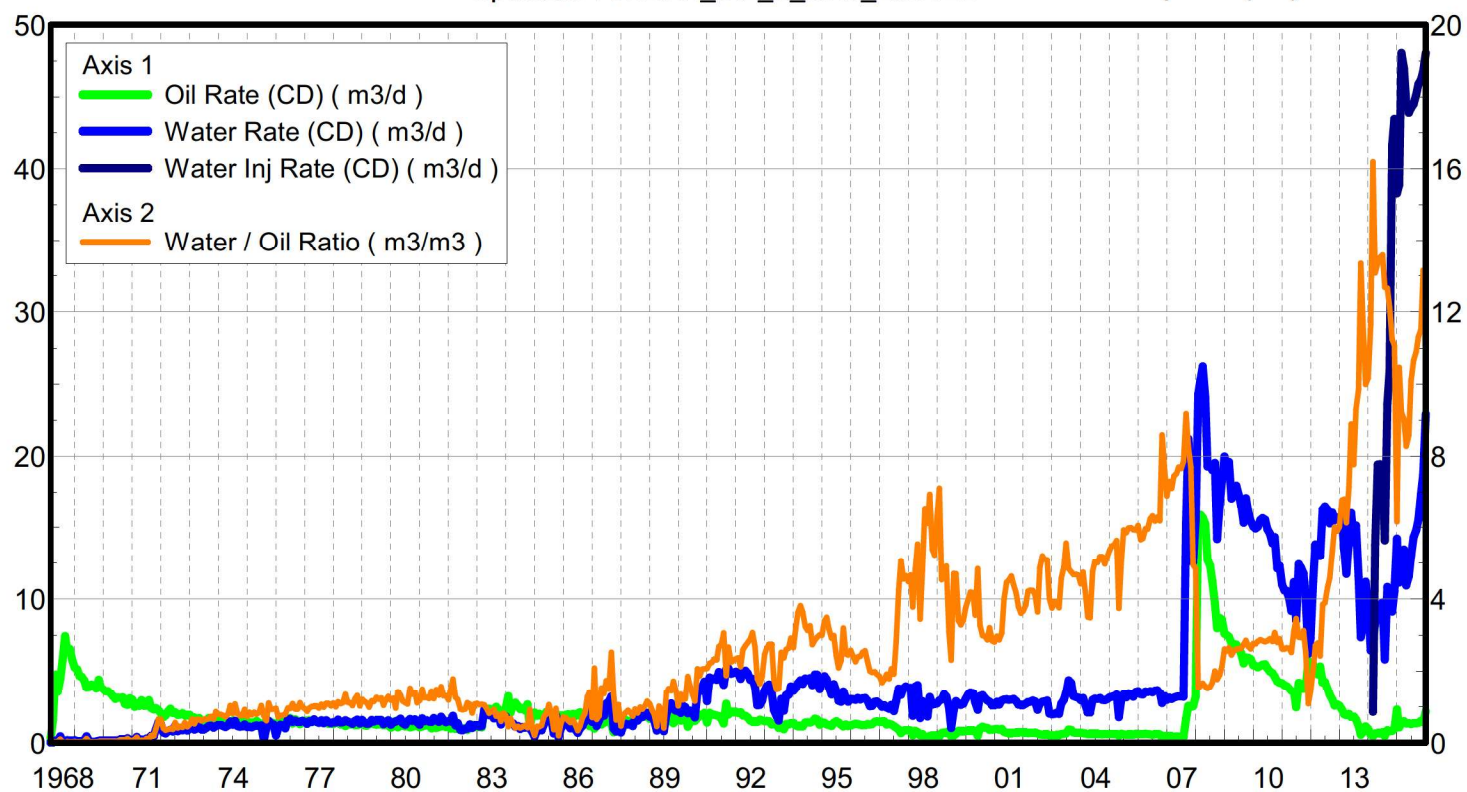
Water / Oil Ratio : 10.56 m3/m3

Operator: TUNDRA_OIL_&_GAS_LIMITED

Oil Rate (CD) : 2.17 m3/d

Water Rate (CD) : 22.90 m3/d

Water Inj Rate (CD) : 48.03 m3/d



Date	Oil Rate (CD) m3/d	Water Rate (CD) m3/d	Water Oil Ratio m3/m3	Water Inj Rate (CD) m3/d	Cum Oil Prod Km3	Cum Water Prod Km3	Cum Water Inj Km3	VRR	Cum VRR
2/29/1968	0.27	0.01	0.04		0.01	0.00	0.00	0.000	0.000
3/31/1968	1.59	0.00	0.00		0.06	0.00	0.00	0.000	0.000
4/30/1968	4.78	0.12	0.02		0.20	0.00	0.00	0.000	0.000
5/31/1968	3.56	0.12	0.03		0.31	0.01	0.00	0.000	0.000
6/30/1968	4.50	0.43	0.10		0.45	0.02	0.00	0.000	0.000
7/31/1968	5.77	0.11	0.02		0.62	0.02	0.00	0.000	0.000
8/31/1968	7.44	0.06	0.01		0.86	0.03	0.00	0.000	0.000
9/30/1968	6.36	0.17	0.03		1.05	0.03	0.00	0.000	0.000
10/31/1968	6.55	0.13	0.02		1.25	0.04	0.00	0.000	0.000
11/30/1968	5.80	0.11	0.02		1.42	0.04	0.00	0.000	0.000
12/31/1968	5.27	0.16	0.03		1.59	0.04	0.00	0.000	0.000
1/31/1969	5.13	0.10	0.02		1.75	0.05	0.00	0.000	0.000
2/28/1969	4.69	0.10	0.02		1.88	0.05	0.00	0.000	0.000
3/31/1969	4.62	0.08	0.02		2.02	0.05	0.00	0.000	0.000
4/30/1969	4.38	0.19	0.04		2.15	0.06	0.00	0.000	0.000
5/31/1969	3.84	0.43	0.11		2.27	0.07	0.00	0.000	0.000
6/30/1969	3.87	0.11	0.03		2.39	0.07	0.00	0.000	0.000
7/31/1969	4.09	0.06	0.01		2.51	0.08	0.00	0.000	0.000
8/31/1969	3.92	0.06	0.01		2.64	0.08	0.00	0.000	0.000
9/30/1969	3.78	0.07	0.02		2.75	0.08	0.00	0.000	0.000
10/31/1969	4.42	0.13	0.03		2.89	0.08	0.00	0.000	0.000
11/30/1969	3.87	0.16	0.04		3.00	0.09	0.00	0.000	0.000
12/31/1969	3.72	0.15	0.04		3.12	0.09	0.00	0.000	0.000
1/31/1970	3.58	0.15	0.04		3.23	0.10	0.00	0.000	0.000
2/28/1970	3.62	0.14	0.04		3.33	0.10	0.00	0.000	0.000
3/31/1970	3.44	0.14	0.04		3.44	0.11	0.00	0.000	0.000
4/30/1970	3.25	0.14	0.04		3.53	0.11	0.00	0.000	0.000
5/31/1970	3.05	0.13	0.04		3.63	0.11	0.00	0.000	0.000
6/30/1970	3.12	0.13	0.04		3.72	0.12	0.00	0.000	0.000
7/31/1970	3.10	0.21	0.07		3.82	0.13	0.00	0.000	0.000
8/31/1970	3.15	0.22	0.07		3.92	0.13	0.00	0.000	0.000
9/30/1970	2.68	0.21	0.08		4.00	0.14	0.00	0.000	0.000
10/31/1970	2.61	0.30	0.12		4.08	0.15	0.00	0.000	0.000
11/30/1970	3.08	0.17	0.05		4.17	0.15	0.00	0.000	0.000
12/31/1970	3.00	0.17	0.06		4.26	0.16	0.00	0.000	0.000
1/31/1971	2.50	0.22	0.09		4.34	0.17	0.00	0.000	0.000
2/28/1971	2.71	0.39	0.14		4.42	0.18	0.00	0.000	0.000
3/31/1971	2.56	0.07	0.03		4.50	0.18	0.00	0.000	0.000
4/30/1971	2.97	0.20	0.07		4.59	0.18	0.00	0.000	0.000
5/31/1971	2.55	0.10	0.04		4.66	0.19	0.00	0.000	0.000
6/30/1971	2.57	0.28	0.11		4.74	0.20	0.00	0.000	0.000
7/31/1971	2.96	0.30	0.10		4.83	0.21	0.00	0.000	0.000
8/31/1971	2.41	0.47	0.20		4.91	0.22	0.00	0.000	0.000
9/30/1971	2.31	0.45	0.20		4.98	0.23	0.00	0.000	0.000
10/31/1971	2.40	0.94	0.39		5.05	0.26	0.00	0.000	0.000
11/30/1971	2.24	1.44	0.65		5.12	0.31	0.00	0.000	0.000

Date	Oil Rate (CD) m3/d	Water Rate (CD) m3/d	Water Oil Ratio m3/m3	Water Inj Rate (CD) m3/d	Cum Oil Prod Km3	Cum Water Prod Km3	Cum Water Inj Km3	VRR	Cum VRR
12/31/1971	2.03	1.31	0.64		5.18	0.35	0.00	0.000	0.000
1/31/1972	1.78	0.71	0.40		5.24	0.37	0.00	0.000	0.000
2/29/1972	1.89	0.64	0.34		5.29	0.39	0.00	0.000	0.000
3/31/1972	2.18	0.80	0.37		5.36	0.41	0.00	0.000	0.000
4/30/1972	2.36	0.89	0.38		5.43	0.44	0.00	0.000	0.000
5/31/1972	2.09	0.78	0.37		5.49	0.46	0.00	0.000	0.000
6/30/1972	2.09	1.17	0.56		5.56	0.50	0.00	0.000	0.000
7/31/1972	1.94	0.79	0.41		5.62	0.52	0.00	0.000	0.000
8/31/1972	1.96	0.89	0.45		5.68	0.55	0.00	0.000	0.000
9/30/1972	2.04	0.86	0.42		5.74	0.58	0.00	0.000	0.000
10/31/1972	1.91	1.07	0.56		5.80	0.61	0.00	0.000	0.000
11/30/1972	1.90	0.84	0.44		5.86	0.63	0.00	0.000	0.000
12/31/1972	1.90	0.97	0.51		5.91	0.66	0.00	0.000	0.000
1/31/1973	1.73	1.13	0.65		5.97	0.70	0.00	0.000	0.000
2/28/1973	1.73	0.91	0.52		6.02	0.72	0.00	0.000	0.000
3/31/1973	1.52	0.98	0.64		6.06	0.76	0.00	0.000	0.000
4/30/1973	1.70	1.10	0.65		6.11	0.79	0.00	0.000	0.000
5/31/1973	1.54	0.92	0.60		6.16	0.82	0.00	0.000	0.000
6/30/1973	1.41	0.92	0.65		6.20	0.84	0.00	0.000	0.000
7/31/1973	1.55	1.00	0.65		6.25	0.88	0.00	0.000	0.000
8/31/1973	1.71	1.15	0.67		6.31	0.91	0.00	0.000	0.000
9/30/1973	1.60	1.17	0.73		6.35	0.95	0.00	0.000	0.000
10/31/1973	1.57	1.03	0.66		6.40	0.98	0.00	0.000	0.000
11/30/1973	1.35	1.16	0.86		6.44	1.01	0.00	0.000	0.000
12/31/1973	1.54	1.21	0.79		6.49	1.05	0.00	0.000	0.000
1/31/1974	1.55	1.21	0.78		6.54	1.09	0.00	0.000	0.000
2/28/1974	1.53	1.15	0.75		6.58	1.12	0.00	0.000	0.000
3/31/1974	1.52	1.08	0.72		6.63	1.15	0.00	0.000	0.000
4/30/1974	1.49	1.18	0.79		6.67	1.19	0.00	0.000	0.000
5/31/1974	1.42	1.47	1.03		6.72	1.23	0.00	0.000	0.000
6/30/1974	1.54	1.24	0.81		6.76	1.27	0.00	0.000	0.000
7/31/1974	1.40	1.50	1.07		6.81	1.32	0.00	0.000	0.000
8/31/1974	1.44	1.15	0.80		6.85	1.35	0.00	0.000	0.000
9/30/1974	1.44	1.10	0.76		6.89	1.39	0.00	0.000	0.000
10/31/1974	1.50	1.14	0.76		6.94	1.42	0.00	0.000	0.000
11/30/1974	1.37	1.26	0.93		6.98	1.46	0.00	0.000	0.000
12/31/1974	1.49	1.08	0.72		7.03	1.49	0.00	0.000	0.000
1/31/1975	1.32	1.11	0.84		7.07	1.53	0.00	0.000	0.000
2/28/1975	1.39	1.07	0.77		7.11	1.56	0.00	0.000	0.000
3/31/1975	1.36	1.15	0.84		7.15	1.59	0.00	0.000	0.000
4/30/1975	1.51	1.20	0.79		7.20	1.63	0.00	0.000	0.000
5/31/1975	1.38	1.14	0.83		7.24	1.67	0.00	0.000	0.000
6/30/1975	1.15	1.19	1.03		7.27	1.70	0.00	0.000	0.000
7/31/1975	0.22	0.17	0.76		7.28	1.71	0.00	0.000	0.000
8/31/1975	1.68	1.03	0.61		7.33	1.74	0.00	0.000	0.000
9/30/1975	1.37	1.51	1.10		7.37	1.78	0.00	0.000	0.000

Date	Oil Rate (CD) m3/d	Water Rate (CD) m3/d	Water Oil Ratio m3/m3	Water Inj Rate (CD) m3/d	Cum Oil Prod Km3	Cum Water Prod Km3	Cum Water Inj Km3	VRR	Cum VRR
10/31/1975	1.41	1.30	0.92		7.42	1.82	0.00	0.000	0.000
11/30/1975	1.35	1.26	0.93		7.46	1.86	0.00	0.000	0.000
12/31/1975	0.54	0.51	0.95		7.47	1.88	0.00	0.000	0.000
1/31/1976	1.39	0.98	0.71		7.52	1.91	0.00	0.000	0.000
2/29/1976	1.64	1.23	0.75		7.56	1.94	0.00	0.000	0.000
3/31/1976	1.52	1.16	0.77		7.61	1.98	0.00	0.000	0.000
4/30/1976	1.26	1.00	0.79		7.65	2.01	0.00	0.000	0.000
5/31/1976	1.67	1.59	0.96		7.70	2.06	0.00	0.000	0.000
6/30/1976	1.72	1.64	0.95		7.75	2.11	0.00	0.000	0.000
7/31/1976	1.33	1.45	1.08		7.79	2.15	0.00	0.000	0.000
8/31/1976	1.62	1.53	0.94		7.84	2.20	0.00	0.000	0.000
9/30/1976	1.53	1.44	0.94		7.89	2.24	0.00	0.000	0.000
10/31/1976	1.28	1.43	1.11		7.93	2.29	0.00	0.000	0.000
11/30/1976	1.52	1.50	0.99		7.97	2.33	0.00	0.000	0.000
12/31/1976	1.52	1.43	0.94		8.02	2.38	0.00	0.000	0.000
1/31/1977	1.50	1.30	0.87		8.07	2.42	0.00	0.000	0.000
2/28/1977	1.55	1.48	0.96		8.11	2.46	0.00	0.000	0.000
3/31/1977	1.42	1.43	1.01		8.16	2.50	0.00	0.000	0.000
4/30/1977	1.60	1.61	1.01		8.20	2.55	0.00	0.000	0.000
5/31/1977	1.43	1.45	1.01		8.25	2.60	0.00	0.000	0.000
6/30/1977	1.44	1.38	0.96		8.29	2.64	0.00	0.000	0.000
7/31/1977	1.45	1.55	1.06		8.34	2.69	0.00	0.000	0.000
8/31/1977	1.38	1.36	0.98		8.38	2.73	0.00	0.000	0.000
9/30/1977	1.44	1.56	1.08		8.42	2.78	0.00	0.000	0.000
10/31/1977	1.31	1.42	1.08		8.46	2.82	0.00	0.000	0.000
11/30/1977	1.33	1.36	1.02		8.50	2.86	0.00	0.000	0.000
12/31/1977	1.29	1.42	1.10		8.54	2.90	0.00	0.000	0.000
1/31/1978	1.41	1.39	0.99		8.59	2.95	0.00	0.000	0.000
2/28/1978	1.40	1.59	1.14		8.63	2.99	0.00	0.000	0.000
3/31/1978	1.29	1.40	1.09		8.67	3.03	0.00	0.000	0.000
4/30/1978	1.28	1.42	1.11		8.70	3.08	0.00	0.000	0.000
5/31/1978	1.14	1.55	1.35		8.74	3.13	0.00	0.000	0.000
6/30/1978	1.30	1.45	1.12		8.78	3.17	0.00	0.000	0.000
7/31/1978	1.26	1.39	1.11		8.82	3.21	0.00	0.000	0.000
8/31/1978	1.28	1.32	1.03		8.86	3.25	0.00	0.000	0.000
9/30/1978	1.22	1.50	1.23		8.89	3.30	0.00	0.000	0.000
10/31/1978	1.22	1.61	1.31		8.93	3.35	0.00	0.000	0.000
11/30/1978	1.29	1.32	1.02		8.97	3.39	0.00	0.000	0.000
12/31/1978	1.30	1.57	1.21		9.01	3.44	0.00	0.000	0.000
1/31/1979	1.19	1.37	1.15		9.05	3.48	0.00	0.000	0.000
2/28/1979	1.18	1.30	1.10		9.08	3.51	0.00	0.000	0.000
3/31/1979	1.33	1.32	0.99		9.12	3.56	0.00	0.000	0.000
4/30/1979	1.35	1.57	1.16		9.16	3.60	0.00	0.000	0.000
5/31/1979	1.28	1.46	1.14		9.20	3.65	0.00	0.000	0.000
6/30/1979	1.23	1.55	1.26		9.24	3.69	0.00	0.000	0.000
7/31/1979	1.28	1.54	1.21		9.28	3.74	0.00	0.000	0.000

Date	Oil Rate (CD) m3/d	Water Rate (CD) m3/d	Water Oil Ratio m3/m3	Water Inj Rate (CD) m3/d	Cum Oil Prod Km3	Cum Water Prod Km3	Cum Water Inj Km3	VRR	Cum VRR
8/31/1979	1.25	1.56	1.24		9.32	3.79	0.00	0.000	0.000
9/30/1979	1.23	1.27	1.04		9.35	3.83	0.00	0.000	0.000
10/31/1979	1.21	1.45	1.20		9.39	3.87	0.00	0.000	0.000
11/30/1979	1.21	1.56	1.29		9.43	3.92	0.00	0.000	0.000
12/31/1979	1.04	1.23	1.19		9.46	3.96	0.00	0.000	0.000
1/31/1980	1.15	1.42	1.24		9.50	4.00	0.00	0.000	0.000
2/29/1980	1.52	1.46	0.96		9.54	4.05	0.00	0.000	0.000
3/31/1980	1.07	1.52	1.43		9.57	4.09	0.00	0.000	0.000
4/30/1980	1.25	1.66	1.33		9.61	4.14	0.00	0.000	0.000
5/31/1980	1.17	1.35	1.15		9.65	4.18	0.00	0.000	0.000
6/30/1980	1.12	1.24	1.11		9.68	4.22	0.00	0.000	0.000
7/31/1980	1.38	1.48	1.07		9.72	4.27	0.00	0.000	0.000
8/31/1980	1.07	1.63	1.53		9.76	4.32	0.00	0.000	0.000
9/30/1980	1.11	1.50	1.35		9.79	4.36	0.00	0.000	0.000
10/31/1980	1.15	1.62	1.41		9.82	4.41	0.00	0.000	0.000
11/30/1980	1.27	1.41	1.11		9.86	4.46	0.00	0.000	0.000
12/31/1980	1.05	1.24	1.18		9.90	4.49	0.00	0.000	0.000
1/31/1981	1.12	1.68	1.50		9.93	4.55	0.00	0.000	0.000
2/28/1981	1.18	1.49	1.26		9.96	4.59	0.00	0.000	0.000
3/31/1981	1.22	1.54	1.27		10.00	4.64	0.00	0.000	0.000
4/30/1981	1.19	1.46	1.22		10.04	4.68	0.00	0.000	0.000
5/31/1981	0.99	1.44	1.45		10.07	4.72	0.00	0.000	0.000
6/30/1981	1.39	1.71	1.23		10.11	4.77	0.00	0.000	0.000
7/31/1981	1.02	1.53	1.50		10.14	4.82	0.00	0.000	0.000
8/31/1981	1.09	1.43	1.32		10.17	4.87	0.00	0.000	0.000
9/30/1981	1.14	1.79	1.57		10.21	4.92	0.00	0.000	0.000
10/31/1981	1.18	1.54	1.30		10.25	4.97	0.00	0.000	0.000
11/30/1981	1.08	1.41	1.31		10.28	5.01	0.00	0.000	0.000
12/31/1981	1.25	1.49	1.19		10.32	5.06	0.00	0.000	0.000
1/31/1982	0.96	1.45	1.51		10.35	5.10	0.00	0.000	0.000
2/28/1982	1.04	1.86	1.79		10.38	5.15	0.00	0.000	0.000
3/31/1982	0.96	1.20	1.26		10.41	5.19	0.00	0.000	0.000
4/30/1982	1.12	1.35	1.20		10.44	5.23	0.00	0.000	0.000
5/31/1982	0.94	0.87	0.93		10.47	5.26	0.00	0.000	0.000
6/30/1982	0.94	0.86	0.92		10.50	5.28	0.00	0.000	0.000
7/31/1982	1.02	0.95	0.93		10.53	5.31	0.00	0.000	0.000
8/31/1982	0.88	0.97	1.11		10.56	5.34	0.00	0.000	0.000
9/30/1982	1.18	1.26	1.07		10.59	5.38	0.00	0.000	0.000
10/31/1982	1.24	1.02	0.82		10.63	5.41	0.00	0.000	0.000
11/30/1982	1.12	1.19	1.07		10.66	5.45	0.00	0.000	0.000
12/31/1982	1.09	1.20	1.10		10.70	5.49	0.00	0.000	0.000
1/31/1983	1.07	1.14	1.06		10.73	5.52	0.00	0.000	0.000
2/28/1983	1.07	1.14	1.07		10.76	5.55	0.00	0.000	0.000
3/31/1983	2.19	2.29	1.05		10.83	5.62	0.00	0.000	0.000
4/30/1983	2.27	2.15	0.95		10.90	5.69	0.00	0.000	0.000
5/31/1983	2.35	1.91	0.82		10.97	5.75	0.00	0.000	0.000

Date	Oil Rate (CD) m3/d	Water Rate (CD) m3/d	Water Oil Ratio m3/m3	Water Inj Rate (CD) m3/d	Cum Oil Prod Km3	Cum Water Prod Km3	Cum Water Inj Km3	VRR	Cum VRR
6/30/1983	2.31	1.98	0.86		11.04	5.81	0.00	0.000	0.000
7/31/1983	1.82	1.69	0.93		11.09	5.86	0.00	0.000	0.000
8/31/1983	2.48	1.82	0.73		11.17	5.92	0.00	0.000	0.000
9/30/1983	2.29	1.81	0.79		11.24	5.97	0.00	0.000	0.000
10/31/1983	2.12	1.26	0.60		11.31	6.01	0.00	0.000	0.000
11/30/1983	2.18	1.78	0.81		11.37	6.06	0.00	0.000	0.000
12/31/1983	2.40	1.82	0.76		11.45	6.12	0.00	0.000	0.000
1/31/1984	3.24	1.44	0.44		11.55	6.16	0.00	0.000	0.000
2/29/1984	2.09	1.40	0.67		11.61	6.21	0.00	0.000	0.000
3/31/1984	2.66	1.33	0.50		11.69	6.25	0.00	0.000	0.000
4/30/1984	2.77	1.12	0.40		11.77	6.28	0.00	0.000	0.000
5/31/1984	2.56	1.16	0.45		11.85	6.32	0.00	0.000	0.000
6/30/1984	2.34	0.95	0.40		11.92	6.34	0.00	0.000	0.000
7/31/1984	2.40	1.07	0.44		12.00	6.38	0.00	0.000	0.000
8/31/1984	2.24	1.07	0.48		12.07	6.41	0.00	0.000	0.000
9/30/1984	2.67	1.10	0.41		12.15	6.44	0.00	0.000	0.000
10/31/1984	1.08	1.00	0.92		12.18	6.47	0.00	0.000	0.000
11/30/1984	1.95	0.74	0.38		12.24	6.50	0.00	0.000	0.000
12/31/1984	2.09	0.41	0.20		12.30	6.51	0.00	0.000	0.000
1/31/1985	1.85	0.83	0.45		12.36	6.54	0.00	0.000	0.000
2/28/1985	2.00	0.89	0.44		12.42	6.56	0.00	0.000	0.000
3/31/1985	1.84	0.87	0.48		12.47	6.59	0.00	0.000	0.000
4/30/1985	1.79	1.31	0.73		12.53	6.63	0.00	0.000	0.000
5/31/1985	2.14	1.70	0.80		12.59	6.68	0.00	0.000	0.000
6/30/1985	1.67	1.77	1.06		12.64	6.73	0.00	0.000	0.000
7/31/1985	2.10	1.69	0.81		12.71	6.78	0.00	0.000	0.000
8/31/1985	1.73	0.63	0.36		12.76	6.80	0.00	0.000	0.000
9/30/1985	1.97	1.88	0.95		12.82	6.86	0.00	0.000	0.000
10/31/1985	1.92	0.37	0.20		12.88	6.87	0.00	0.000	0.000
11/30/1985	1.86	0.97	0.52		12.94	6.90	0.00	0.000	0.000
12/31/1985	1.86	1.31	0.71		12.99	6.94	0.00	0.000	0.000
1/31/1986	1.92	1.32	0.69		13.05	6.98	0.00	0.000	0.000
2/28/1986	1.97	1.19	0.61		13.11	7.02	0.00	0.000	0.000
3/31/1986	1.80	1.00	0.56		13.16	7.05	0.00	0.000	0.000
4/30/1986	2.00	1.25	0.63		13.22	7.09	0.00	0.000	0.000
5/31/1986	1.84	0.93	0.51		13.28	7.11	0.00	0.000	0.000
6/30/1986	2.02	0.68	0.34		13.34	7.13	0.00	0.000	0.000
7/31/1986	2.11	0.98	0.46		13.41	7.16	0.00	0.000	0.000
8/31/1986	1.68	1.16	0.69		13.46	7.20	0.00	0.000	0.000
9/30/1986	1.85	1.48	0.80		13.52	7.25	0.00	0.000	0.000
10/31/1986	1.83	2.35	1.28		13.57	7.32	0.00	0.000	0.000
11/30/1986	1.16	1.64	1.42		13.61	7.37	0.00	0.000	0.000
12/31/1986	2.06	1.44	0.70		13.67	7.41	0.00	0.000	0.000
1/31/1987	0.97	2.03	2.09		13.70	7.48	0.00	0.000	0.000
2/28/1987	1.79	1.16	0.65		13.75	7.51	0.00	0.000	0.000
3/31/1987	2.12	1.57	0.74		13.82	7.56	0.00	0.000	0.000

Date	Oil Rate (CD) m3/d	Water Rate (CD) m3/d	Water Oil Ratio m3/m3	Water Inj Rate (CD) m3/d	Cum Oil Prod Km3	Cum Water Prod Km3	Cum Water Inj Km3	VRR	Cum VRR
4/30/1987	1.26	1.94	1.54		13.85	7.61	0.00	0.000	0.000
5/31/1987	1.37	1.87	1.37		13.90	7.67	0.00	0.000	0.000
6/30/1987	1.56	2.71	1.74		13.94	7.75	0.00	0.000	0.000
7/31/1987	1.89	2.84	1.50		14.00	7.84	0.00	0.000	0.000
8/31/1987	1.27	3.22	2.53		14.04	7.94	0.00	0.000	0.000
9/30/1987	0.72	0.96	1.34		14.06	7.97	0.00	0.000	0.000
10/31/1987	1.22	0.76	0.63		14.10	7.99	0.00	0.000	0.000
11/30/1987	1.56	1.65	1.05		14.15	8.04	0.00	0.000	0.000
12/31/1987	1.56	0.71	0.46		14.20	8.07	0.00	0.000	0.000
1/31/1988	1.51	1.16	0.77		14.24	8.10	0.00	0.000	0.000
2/29/1988	1.59	1.31	0.83		14.29	8.14	0.00	0.000	0.000
3/31/1988	1.40	1.25	0.89		14.33	8.18	0.00	0.000	0.000
4/30/1988	1.51	1.27	0.84		14.38	8.22	0.00	0.000	0.000
5/31/1988	1.56	1.15	0.74		14.43	8.25	0.00	0.000	0.000
6/30/1988	1.83	1.71	0.93		14.48	8.30	0.00	0.000	0.000
7/31/1988	1.85	1.52	0.82		14.54	8.35	0.00	0.000	0.000
8/31/1988	1.83	1.80	0.98		14.60	8.41	0.00	0.000	0.000
9/30/1988	1.90	1.78	0.94		14.65	8.46	0.00	0.000	0.000
10/31/1988	2.01	2.05	1.02		14.71	8.52	0.00	0.000	0.000
11/30/1988	1.77	2.04	1.15		14.77	8.58	0.00	0.000	0.000
12/31/1988	1.66	1.79	1.08		14.82	8.64	0.00	0.000	0.000
1/31/1989	1.94	1.76	0.91		14.88	8.69	0.00	0.000	0.000
2/28/1989	1.92	1.52	0.79		14.93	8.74	0.00	0.000	0.000
3/31/1989	1.85	0.83	0.45		14.99	8.76	0.00	0.000	0.000
4/30/1989	1.32	1.33	1.01		15.03	8.80	0.00	0.000	0.000
5/31/1989	1.28	1.18	0.92		15.07	8.84	0.00	0.000	0.000
6/30/1989	1.95	0.80	0.41		15.13	8.86	0.00	0.000	0.000
7/31/1989	1.41	1.98	1.40		15.17	8.92	0.00	0.000	0.000
8/31/1989	1.61	2.45	1.52		15.22	9.00	0.00	0.000	0.000
9/30/1989	1.89	2.73	1.45		15.28	9.08	0.00	0.000	0.000
10/31/1989	1.36	2.34	1.72		15.32	9.16	0.00	0.000	0.000
11/30/1989	1.52	2.22	1.46		15.37	9.22	0.00	0.000	0.000
12/31/1989	2.15	2.19	1.02		15.43	9.29	0.00	0.000	0.000
1/31/1990	1.53	2.07	1.35		15.48	9.35	0.00	0.000	0.000
2/28/1990	2.14	2.55	1.19		15.54	9.43	0.00	0.000	0.000
3/31/1990	2.03	2.47	1.22		15.60	9.50	0.00	0.000	0.000
4/30/1990	1.09	2.03	1.86		15.64	9.56	0.00	0.000	0.000
5/31/1990	1.40	2.21	1.58		15.68	9.63	0.00	0.000	0.000
6/30/1990	1.52	2.02	1.33		15.72	9.69	0.00	0.000	0.000
7/31/1990	1.51	1.75	1.16		15.77	9.75	0.00	0.000	0.000
8/31/1990	1.71	3.55	2.08		15.82	9.86	0.00	0.000	0.000
9/30/1990	1.90	3.57	1.88		15.88	9.96	0.00	0.000	0.000
10/31/1990	1.91	3.93	2.06		15.94	10.09	0.00	0.000	0.000
11/30/1990	2.07	4.30	2.08		16.00	10.21	0.00	0.000	0.000
12/31/1990	1.38	2.88	2.08		16.05	10.30	0.00	0.000	0.000
1/31/1991	2.05	4.57	2.22		16.11	10.45	0.00	0.000	0.000

Date	Oil Rate (CD) m3/d	Water Rate (CD) m3/d	Water Oil Ratio m3/m3	Water Inj Rate (CD) m3/d	Cum Oil Prod Km3	Cum Water Prod Km3	Cum Water Inj Km3	VRR	Cum VRR
2/28/1991	1.97	4.43	2.25		16.16	10.57	0.00	0.000	0.000
3/31/1991	1.94	4.51	2.33		16.22	10.71	0.00	0.000	0.000
4/30/1991	1.89	4.42	2.33		16.28	10.84	0.00	0.000	0.000
5/31/1991	1.84	4.96	2.69		16.34	11.00	0.00	0.000	0.000
6/30/1991	1.63	4.47	2.75		16.39	11.13	0.00	0.000	0.000
7/31/1991	1.33	4.06	3.06		16.43	11.26	0.00	0.000	0.000
8/31/1991	2.71	5.13	1.89		16.51	11.41	0.00	0.000	0.000
9/30/1991	1.95	5.20	2.67		16.57	11.57	0.00	0.000	0.000
10/31/1991	2.14	4.84	2.26		16.64	11.72	0.00	0.000	0.000
11/30/1991	2.13	4.89	2.29		16.70	11.87	0.00	0.000	0.000
12/31/1991	2.12	4.98	2.35		16.77	12.02	0.00	0.000	0.000
1/31/1992	2.05	4.89	2.38		16.83	12.17	0.00	0.000	0.000
2/29/1992	2.10	4.49	2.14		16.89	12.30	0.00	0.000	0.000
3/31/1992	1.88	4.89	2.60		16.95	12.46	0.00	0.000	0.000
4/30/1992	1.86	5.04	2.72		17.01	12.61	0.00	0.000	0.000
5/31/1992	1.74	4.86	2.79		17.06	12.76	0.00	0.000	0.000
6/30/1992	1.53	4.42	2.89		17.11	12.89	0.00	0.000	0.000
7/31/1992	1.47	4.50	3.07		17.15	13.03	0.00	0.000	0.000
8/31/1992	1.47	3.93	2.68		17.20	13.15	0.00	0.000	0.000
9/30/1992	1.44	2.60	1.81		17.24	13.23	0.00	0.000	0.000
10/31/1992	1.59	2.63	1.65		17.29	13.31	0.00	0.000	0.000
11/30/1992	1.56	2.90	1.86		17.34	13.40	0.00	0.000	0.000
12/31/1992	1.48	3.66	2.48		17.38	13.51	0.00	0.000	0.000
1/31/1993	1.50	3.99	2.65		17.43	13.63	0.00	0.000	0.000
2/28/1993	1.49	4.09	2.74		17.47	13.75	0.00	0.000	0.000
3/31/1993	1.27	3.49	2.74		17.51	13.86	0.00	0.000	0.000
4/30/1993	1.28	2.27	1.78		17.55	13.93	0.00	0.000	0.000
5/31/1993	1.25	1.86	1.48		17.59	13.98	0.00	0.000	0.000
6/30/1993	1.02	1.54	1.50		17.62	14.03	0.00	0.000	0.000
7/31/1993	1.21	3.05	2.53		17.65	14.12	0.00	0.000	0.000
8/31/1993	0.93	2.21	2.37		17.68	14.19	0.00	0.000	0.000
9/30/1993	1.27	3.32	2.60		17.72	14.29	0.00	0.000	0.000
10/31/1993	1.26	3.33	2.65		17.76	14.39	0.00	0.000	0.000
11/30/1993	1.36	3.95	2.92		17.80	14.51	0.00	0.000	0.000
12/31/1993	1.36	3.62	2.66		17.84	14.63	0.00	0.000	0.000
1/31/1994	1.19	3.79	3.18		17.88	14.74	0.00	0.000	0.000
2/28/1994	1.16	4.19	3.63		17.91	14.86	0.00	0.000	0.000
3/31/1994	1.15	4.38	3.81		17.95	15.00	0.00	0.000	0.000
4/30/1994	1.14	4.14	3.64		17.98	15.12	0.00	0.000	0.000
5/31/1994	1.39	4.51	3.24		18.03	15.26	0.00	0.000	0.000
6/30/1994	1.41	4.41	3.14		18.07	15.39	0.00	0.000	0.000
7/31/1994	1.39	4.54	3.26		18.11	15.53	0.00	0.000	0.000
8/31/1994	1.47	4.04	2.74		18.16	15.66	0.00	0.000	0.000
9/30/1994	1.66	4.75	2.86		18.21	15.80	0.00	0.000	0.000
10/31/1994	1.61	4.76	2.95		18.26	15.95	0.00	0.000	0.000
11/30/1994	1.24	3.73	3.01		18.29	16.06	0.00	0.000	0.000

Date	Oil Rate (CD) m3/d	Water Rate (CD) m3/d	Water Oil Ratio m3/m3	Water Inj Rate (CD) m3/d	Cum Oil Prod Km3	Cum Water Prod Km3	Cum Water Inj Km3	VRR	Cum VRR
12/31/1994	1.42	4.26	3.00		18.34	16.19	0.00	0.000	0.000
1/31/1995	1.37	4.66	3.40		18.38	16.34	0.00	0.000	0.000
2/28/1995	1.27	4.44	3.49		18.42	16.46	0.00	0.000	0.000
3/31/1995	1.22	3.87	3.17		18.45	16.58	0.00	0.000	0.000
4/30/1995	1.15	3.35	2.92		18.49	16.68	0.00	0.000	0.000
5/31/1995	1.38	4.12	2.99		18.53	16.81	0.00	0.000	0.000
6/30/1995	1.48	3.61	2.43		18.58	16.92	0.00	0.000	0.000
7/31/1995	1.39	2.91	2.10		18.62	17.01	0.00	0.000	0.000
8/31/1995	1.23	2.84	2.30		18.66	17.10	0.00	0.000	0.000
9/30/1995	1.12	3.59	3.19		18.69	17.20	0.00	0.000	0.000
10/31/1995	1.25	3.11	2.48		18.73	17.30	0.00	0.000	0.000
11/30/1995	1.15	2.83	2.46		18.76	17.39	0.00	0.000	0.000
12/31/1995	1.18	3.05	2.58		18.80	17.48	0.00	0.000	0.000
1/31/1996	1.26	3.02	2.40		18.84	17.57	0.00	0.000	0.000
2/29/1996	1.31	2.97	2.27		18.88	17.66	0.00	0.000	0.000
3/31/1996	1.29	3.10	2.41		18.92	17.76	0.00	0.000	0.000
4/30/1996	1.24	3.00	2.42		18.96	17.85	0.00	0.000	0.000
5/31/1996	1.23	3.10	2.52		18.99	17.94	0.00	0.000	0.000
6/30/1996	1.21	3.12	2.57		19.03	18.04	0.00	0.000	0.000
7/31/1996	1.27	2.92	2.29		19.07	18.13	0.00	0.000	0.000
8/31/1996	1.25	2.52	2.01		19.11	18.20	0.00	0.000	0.000
9/30/1996	1.29	2.55	1.97		19.15	18.28	0.00	0.000	0.000
10/31/1996	1.43	2.85	1.99		19.19	18.37	0.00	0.000	0.000
11/30/1996	1.49	2.87	1.92		19.24	18.46	0.00	0.000	0.000
12/31/1996	1.45	2.70	1.86		19.28	18.54	0.00	0.000	0.000
1/31/1997	1.47	2.49	1.69		19.33	18.62	0.00	0.000	0.000
2/28/1997	1.47	2.60	1.77		19.37	18.69	0.00	0.000	0.000
3/31/1997	1.26	2.43	1.93		19.41	18.76	0.00	0.000	0.000
4/30/1997	1.31	2.35	1.80		19.45	18.84	0.00	0.000	0.000
5/31/1997	1.26	2.62	2.08		19.48	18.92	0.00	0.000	0.000
6/30/1997	1.14	2.20	1.93		19.52	18.98	0.00	0.000	0.000
7/31/1997	1.03	2.89	2.82		19.55	19.07	0.00	0.000	0.000
8/31/1997	0.90	3.80	4.24		19.58	19.19	0.00	0.000	0.000
9/30/1997	0.66	3.33	5.06		19.60	19.29	0.00	0.000	0.000
10/31/1997	0.84	3.83	4.55		19.62	19.41	0.00	0.000	0.000
11/30/1997	0.85	3.96	4.64		19.65	19.53	0.00	0.000	0.000
12/31/1997	0.86	3.84	4.48		19.68	19.65	0.00	0.000	0.000
1/31/1998	0.83	3.88	4.66		19.70	19.77	0.00	0.000	0.000
2/28/1998	0.49	1.86	3.77		19.72	19.82	0.00	0.000	0.000
3/31/1998	0.82	3.95	4.84		19.74	19.94	0.00	0.000	0.000
4/30/1998	0.73	4.05	5.52		19.76	20.06	0.00	0.000	0.000
5/31/1998	0.49	1.70	3.44		19.78	20.12	0.00	0.000	0.000
6/30/1998	0.60	2.88	4.79		19.80	20.20	0.00	0.000	0.000
7/31/1998	0.40	2.64	6.53		19.81	20.28	0.00	0.000	0.000
8/31/1998	0.30	1.82	6.11		19.82	20.34	0.00	0.000	0.000
9/30/1998	0.46	3.17	6.93		19.83	20.44	0.00	0.000	0.000

Date	Oil Rate (CD) m3/d	Water Rate (CD) m3/d	Water Oil Ratio m3/m3	Water Inj Rate (CD) m3/d	Cum Oil Prod Km3	Cum Water Prod Km3	Cum Water Inj Km3	VRR	Cum VRR
10/31/1998	0.49	2.64	5.37		19.85	20.52	0.00	0.000	0.000
11/30/1998	0.51	2.68	5.22		19.86	20.60	0.00	0.000	0.000
12/31/1998	0.43	2.73	6.29		19.88	20.68	0.00	0.000	0.000
1/31/1999	0.41	2.93	7.10		19.89	20.77	0.00	0.000	0.000
2/28/1999	0.66	2.99	4.53		19.91	20.86	0.00	0.000	0.000
3/31/1999	0.70	3.38	4.83		19.93	20.96	0.00	0.000	0.000
4/30/1999	0.65	3.20	4.90		19.95	21.06	0.00	0.000	0.000
5/31/1999	0.81	2.50	3.09		19.97	21.14	0.00	0.000	0.000
6/30/1999	0.43	1.01	2.32		19.99	21.17	0.00	0.000	0.000
7/31/1999	0.48	2.27	4.70		20.00	21.24	0.00	0.000	0.000
8/31/1999	0.62	2.89	4.70		20.02	21.33	0.00	0.000	0.000
9/30/1999	0.81	2.74	3.41		20.05	21.41	0.00	0.000	0.000
10/31/1999	0.80	2.62	3.28		20.07	21.49	0.00	0.000	0.000
11/30/1999	0.79	2.71	3.41		20.09	21.57	0.00	0.000	0.000
12/31/1999	0.81	3.04	3.75		20.12	21.66	0.00	0.000	0.000
1/31/2000	0.84	3.35	3.98		20.15	21.77	0.00	0.000	0.000
2/29/2000	0.84	3.53	4.19		20.17	21.87	0.00	0.000	0.000
3/31/2000	0.84	3.48	4.16		20.20	21.98	0.00	0.000	0.000
4/30/2000	0.79	2.80	3.56		20.22	22.06	0.00	0.000	0.000
5/31/2000	0.47	2.28	4.83		20.23	22.13	0.00	0.000	0.000
6/30/2000	0.99	3.24	3.27		20.26	22.23	0.00	0.000	0.000
7/31/2000	1.11	3.31	2.99		20.30	22.33	0.00	0.000	0.000
8/31/2000	1.05	3.11	2.97		20.33	22.43	0.00	0.000	0.000
9/30/2000	1.02	2.93	2.88		20.36	22.52	0.00	0.000	0.000
10/31/2000	0.89	2.84	3.20		20.39	22.61	0.00	0.000	0.000
11/30/2000	0.91	2.60	2.85		20.42	22.68	0.00	0.000	0.000
12/31/2000	0.92	2.60	2.82		20.44	22.76	0.00	0.000	0.000
1/31/2001	0.95	2.83	2.97		20.47	22.85	0.00	0.000	0.000
2/28/2001	0.92	2.63	2.88		20.50	22.93	0.00	0.000	0.000
3/31/2001	0.96	2.92	3.06		20.53	23.02	0.00	0.000	0.000
4/30/2001	0.75	2.99	3.98		20.55	23.11	0.00	0.000	0.000
5/31/2001	0.68	3.02	4.45		20.57	23.20	0.00	0.000	0.000
6/30/2001	0.66	2.97	4.52		20.59	23.29	0.00	0.000	0.000
7/31/2001	0.65	3.00	4.63		20.61	23.38	0.00	0.000	0.000
8/31/2001	0.69	3.03	4.39		20.63	23.48	0.00	0.000	0.000
9/30/2001	0.69	2.88	4.16		20.66	23.56	0.00	0.000	0.000
10/31/2001	0.70	2.64	3.78		20.68	23.64	0.00	0.000	0.000
11/30/2001	0.73	2.62	3.60		20.70	23.72	0.00	0.000	0.000
12/31/2001	0.71	2.61	3.67		20.72	23.80	0.00	0.000	0.000
1/31/2002	0.70	2.70	3.83		20.74	23.89	0.00	0.000	0.000
2/28/2002	0.67	2.81	4.21		20.76	23.97	0.00	0.000	0.000
3/31/2002	0.67	2.85	4.24		20.78	24.06	0.00	0.000	0.000
4/30/2002	0.69	2.92	4.23		20.80	24.14	0.00	0.000	0.000
5/31/2002	0.70	2.86	4.11		20.82	24.23	0.00	0.000	0.000
6/30/2002	0.63	2.29	3.64		20.84	24.30	0.00	0.000	0.000
7/31/2002	0.56	2.72	4.86		20.86	24.38	0.00	0.000	0.000

Date	Oil Rate (CD) m3/d	Water Rate (CD) m3/d	Water Oil Ratio m3/m3	Water Inj Rate (CD) m3/d	Cum Oil Prod Km3	Cum Water Prod Km3	Cum Water Inj Km3	VRR	Cum VRR
8/31/2002	0.55	2.84	5.19		20.88	24.47	0.00	0.000	0.000
9/30/2002	0.56	2.86	5.09		20.89	24.56	0.00	0.000	0.000
10/31/2002	0.58	2.94	5.08		20.91	24.65	0.00	0.000	0.000
11/30/2002	0.51	2.02	4.00		20.93	24.71	0.00	0.000	0.000
12/31/2002	0.53	1.98	3.75		20.94	24.77	0.00	0.000	0.000
1/31/2003	0.51	1.99	3.93		20.96	24.83	0.00	0.000	0.000
2/28/2003	0.53	2.06	3.87		20.97	24.89	0.00	0.000	0.000
3/31/2003	0.53	2.00	3.76		20.99	24.95	0.00	0.000	0.000
4/30/2003	0.59	2.70	4.57		21.01	25.03	0.00	0.000	0.000
5/31/2003	0.61	2.99	4.88		21.03	25.13	0.00	0.000	0.000
6/30/2003	0.63	3.48	5.55		21.05	25.23	0.00	0.000	0.000
7/31/2003	0.91	4.38	4.84		21.07	25.37	0.00	0.000	0.000
8/31/2003	0.89	4.20	4.74		21.10	25.50	0.00	0.000	0.000
9/30/2003	0.69	3.24	4.68		21.12	25.59	0.00	0.000	0.000
10/31/2003	0.68	3.17	4.68		21.14	25.69	0.00	0.000	0.000
11/30/2003	0.67	3.13	4.66		21.16	25.79	0.00	0.000	0.000
12/31/2003	0.67	2.96	4.42		21.18	25.88	0.00	0.000	0.000
1/31/2004	0.65	3.10	4.73		21.20	25.97	0.00	0.000	0.000
2/29/2004	0.63	2.64	4.21		21.22	26.05	0.00	0.000	0.000
3/31/2004	0.60	2.10	3.50		21.24	26.12	0.00	0.000	0.000
4/30/2004	0.61	2.12	3.48		21.26	26.18	0.00	0.000	0.000
5/31/2004	0.63	2.98	4.76		21.28	26.27	0.00	0.000	0.000
6/30/2004	0.61	3.07	5.03		21.30	26.36	0.00	0.000	0.000
7/31/2004	0.61	3.04	5.01		21.32	26.46	0.00	0.000	0.000
8/31/2004	0.60	3.12	5.17		21.34	26.55	0.00	0.000	0.000
9/30/2004	0.58	2.98	5.16		21.35	26.64	0.00	0.000	0.000
10/31/2004	0.60	2.96	4.97		21.37	26.74	0.00	0.000	0.000
11/30/2004	0.59	3.03	5.15		21.39	26.83	0.00	0.000	0.000
12/31/2004	0.59	3.17	5.35		21.41	26.92	0.00	0.000	0.000
1/31/2005	0.59	3.21	5.47		21.42	27.02	0.00	0.000	0.000
2/28/2005	0.59	3.25	5.51		21.44	27.11	0.00	0.000	0.000
3/31/2005	0.60	3.35	5.63		21.46	27.22	0.00	0.000	0.000
4/30/2005	0.48	1.78	3.74		21.47	27.27	0.00	0.000	0.000
5/31/2005	0.61	3.09	5.10		21.49	27.37	0.00	0.000	0.000
6/30/2005	0.57	3.38	5.92		21.51	27.47	0.00	0.000	0.000
7/31/2005	0.54	3.17	5.84		21.53	27.57	0.00	0.000	0.000
8/31/2005	0.58	3.47	5.97		21.54	27.68	0.00	0.000	0.000
9/30/2005	0.57	3.39	5.98		21.56	27.78	0.00	0.000	0.000
10/31/2005	0.54	3.21	5.92		21.58	27.88	0.00	0.000	0.000
11/30/2005	0.60	3.58	5.92		21.60	27.98	0.00	0.000	0.000
12/31/2005	0.60	3.61	6.04		21.62	28.10	0.00	0.000	0.000
1/31/2006	0.60	3.38	5.65		21.63	28.20	0.00	0.000	0.000
2/28/2006	0.59	3.35	5.68		21.65	28.29	0.00	0.000	0.000
3/31/2006	0.61	3.60	5.96		21.67	28.41	0.00	0.000	0.000
4/30/2006	0.59	3.54	5.94		21.69	28.51	0.00	0.000	0.000
5/31/2006	0.58	3.62	6.23		21.71	28.62	0.00	0.000	0.000

Date	Oil Rate (CD) m3/d	Water Rate (CD) m3/d	Water Oil Ratio m3/m3	Water Inj Rate (CD) m3/d	Cum Oil Prod Km3	Cum Water Prod Km3	Cum Water Inj Km3	VRR	Cum VRR
6/30/2006	0.56	3.50	6.31		21.72	28.73	0.00	0.000	0.000
7/31/2006	0.60	3.67	6.16		21.74	28.84	0.00	0.000	0.000
8/31/2006	0.59	3.69	6.27		21.76	28.96	0.00	0.000	0.000
9/30/2006	0.57	3.50	6.17		21.78	29.06	0.00	0.000	0.000
10/31/2006	0.32	2.75	8.58		21.79	29.15	0.00	0.000	0.000
11/30/2006	0.43	3.24	7.60		21.80	29.25	0.00	0.000	0.000
12/31/2006	0.43	2.97	6.88		21.81	29.34	0.00	0.000	0.000
1/31/2007	0.43	3.13	7.29		21.82	29.43	0.00	0.000	0.000
2/28/2007	0.43	3.05	7.10		21.84	29.52	0.00	0.000	0.000
3/31/2007	0.42	3.14	7.44		21.85	29.62	0.00	0.000	0.000
4/30/2007	0.43	3.21	7.51		21.86	29.71	0.00	0.000	0.000
5/31/2007	0.42	3.23	7.69		21.88	29.81	0.00	0.000	0.000
6/30/2007	0.42	3.21	7.65		21.89	29.91	0.00	0.000	0.000
7/31/2007	0.41	3.21	7.85		21.90	30.01	0.00	0.000	0.000
8/31/2007	1.67	15.30	9.17		21.95	30.48	0.00	0.000	0.000
9/30/2007	2.56	21.19	8.27		22.03	31.12	0.00	0.000	0.000
10/31/2007	2.49	19.15	7.69		22.11	31.71	0.00	0.000	0.000
11/30/2007	2.54	12.54	4.94		22.18	32.09	0.00	0.000	0.000
12/31/2007	3.19	15.45	4.84		22.28	32.57	0.00	0.000	0.000
1/31/2008	15.74	24.27	1.54		22.77	33.32	0.00	0.000	0.000
2/29/2008	15.84	25.29	1.60		23.23	34.05	0.00	0.000	0.000
3/31/2008	15.67	26.23	1.67		23.72	34.87	0.00	0.000	0.000
4/30/2008	15.22	24.05	1.58		24.17	35.59	0.00	0.000	0.000
5/31/2008	12.72	19.27	1.51		24.57	36.19	0.00	0.000	0.000
6/30/2008	12.32	19.36	1.57		24.94	36.77	0.00	0.000	0.000
7/31/2008	11.23	19.02	1.69		25.28	37.36	0.00	0.000	0.000
8/31/2008	9.71	19.52	2.01		25.58	37.96	0.00	0.000	0.000
9/30/2008	7.98	14.17	1.77		25.82	38.39	0.00	0.000	0.000
10/31/2008	8.69	16.57	1.91		26.09	38.90	0.00	0.000	0.000
11/30/2008	8.56	18.26	2.13		26.35	39.45	0.00	0.000	0.000
12/31/2008	7.62	19.96	2.62		26.59	40.07	0.00	0.000	0.000
1/31/2009	7.51	19.23	2.56		26.82	40.66	0.00	0.000	0.000
2/28/2009	7.39	19.58	2.65		27.03	41.21	0.00	0.000	0.000
3/31/2009	6.94	17.03	2.45		27.24	41.74	0.00	0.000	0.000
4/30/2009	6.88	17.60	2.56		27.45	42.27	0.00	0.000	0.000
5/31/2009	6.85	17.94	2.62		27.66	42.82	0.00	0.000	0.000
6/30/2009	6.56	17.25	2.63		27.86	43.34	0.00	0.000	0.000
7/31/2009	6.27	16.55	2.64		28.05	43.85	0.00	0.000	0.000
8/31/2009	5.56	15.30	2.75		28.22	44.33	0.00	0.000	0.000
9/30/2009	5.96	17.06	2.86		28.40	44.84	0.00	0.000	0.000
10/31/2009	5.95	15.99	2.69		28.59	45.34	0.00	0.000	0.000
11/30/2009	5.86	15.38	2.63		28.76	45.80	0.00	0.000	0.000
12/31/2009	5.43	15.03	2.77		28.93	46.26	0.00	0.000	0.000
1/31/2010	5.38	14.91	2.77		29.10	46.73	0.00	0.000	0.000
2/28/2010	5.30	15.01	2.83		29.25	47.15	0.00	0.000	0.000
3/31/2010	5.39	15.49	2.87		29.41	47.63	0.00	0.000	0.000

Date	Oil Rate (CD) m3/d	Water Rate (CD) m3/d	Water Oil Ratio m3/m3	Water Inj Rate (CD) m3/d	Cum Oil Prod Km3	Cum Water Prod Km3	Cum Water Inj Km3	VRR	Cum VRR
4/30/2010	5.48	15.62	2.85		29.58	48.09	0.00	0.000	0.000
5/31/2010	5.49	15.51	2.83		29.75	48.58	0.00	0.000	0.000
6/30/2010	5.22	14.86	2.85		29.91	49.02	0.00	0.000	0.000
7/31/2010	5.02	14.54	2.90		30.06	49.47	0.00	0.000	0.000
8/31/2010	4.90	13.88	2.83		30.21	49.90	0.00	0.000	0.000
9/30/2010	4.65	14.29	3.07		30.35	50.33	0.00	0.000	0.000
10/31/2010	4.32	12.11	2.80		30.49	50.71	0.00	0.000	0.000
11/30/2010	4.23	12.29	2.90		30.61	51.07	0.00	0.000	0.000
12/31/2010	4.18	10.99	2.63		30.74	51.42	0.00	0.000	0.000
1/31/2011	4.05	10.59	2.62		30.87	51.74	0.00	0.000	0.000
2/28/2011	3.97	10.55	2.65		30.98	52.04	0.00	0.000	0.000
3/31/2011	3.80	10.05	2.65		31.10	52.35	0.00	0.000	0.000
4/30/2011	3.63	9.17	2.53		31.21	52.63	0.00	0.000	0.000
5/31/2011	3.58	11.15	3.12		31.32	52.97	0.00	0.000	0.000
6/30/2011	2.46	8.50	3.46		31.39	53.23	0.00	0.000	0.000
7/31/2011	4.21	12.41	2.95		31.52	53.61	0.00	0.000	0.000
8/31/2011	4.14	12.17	2.94		31.65	53.99	0.00	0.000	0.000
9/30/2011	3.76	11.75	3.12		31.76	54.34	0.00	0.000	0.000
10/31/2011	3.91	9.87	2.52		31.88	54.65	0.00	0.000	0.000
11/30/2011	5.74	6.22	1.08		32.06	54.83	0.00	0.000	0.000
12/31/2011	5.09	7.27	1.43		32.21	55.06	0.00	0.000	0.000
1/31/2012	5.47	11.18	2.04		32.38	55.40	0.00	0.000	0.000
2/29/2012	5.07	13.78	2.72		32.53	55.80	0.00	0.000	0.000
3/31/2012	4.81	13.40	2.78		32.68	56.22	0.00	0.000	0.000
4/30/2012	5.35	12.97	2.43		32.84	56.61	0.00	0.000	0.000
5/31/2012	4.24	16.29	3.84		32.97	57.11	0.00	0.000	0.000
6/30/2012	4.24	16.49	3.89		33.10	57.61	0.00	0.000	0.000
7/31/2012	3.77	16.26	4.31		33.22	58.11	0.00	0.000	0.000
8/31/2012	3.33	15.25	4.58		33.32	58.59	0.00	0.000	0.000
9/30/2012	3.00	16.00	5.33		33.41	59.07	0.00	0.000	0.000
10/31/2012	2.58	15.48	6.00		33.49	59.55	0.00	0.000	0.000
11/30/2012	2.66	15.66	5.89		33.57	60.02	0.00	0.000	0.000
12/31/2012	2.58	15.48	6.00		33.65	60.50	0.00	0.000	0.000
1/31/2013	2.30	15.58	6.77		33.72	60.98	0.00	0.000	0.000
2/28/2013	1.97	13.43	6.80		33.78	61.35	0.00	0.000	0.000
3/31/2013	1.92	11.73	6.12		33.83	61.72	0.00	0.000	0.000
4/30/2013	1.99	14.17	7.14		33.89	62.14	0.00	0.000	0.000
5/31/2013	1.80	15.97	8.89		33.95	62.64	0.00	0.000	0.000
6/30/2013	1.79	13.94	7.76		34.00	63.06	0.00	0.000	0.000
7/31/2013	1.62	15.09	9.29		34.05	63.52	0.00	0.000	0.000
8/31/2013	1.17	11.55	9.84		34.09	63.88	0.00	0.000	0.000
9/30/2013	0.55	7.38	13.35		34.11	64.10	0.00	0.000	0.000
10/31/2013	0.74	8.48	11.43		34.13	64.37	0.00	0.000	0.000
11/30/2013	1.12	11.18	9.98		34.16	64.70	0.00	0.000	0.000
12/31/2013	0.95	9.61	10.16		34.19	65.00	0.00	0.000	0.000
1/31/2014	0.55	6.45	11.64		34.21	65.20	0.00	0.000	0.000

Date	Oil Rate (CD) m3/d	Water Rate (CD) m3/d	Water Oil Ratio m3/m3	Water Inj Rate (CD) m3/d	Cum Oil Prod Km3	Cum Water Prod Km3	Cum Water Inj Km3	VRR	Cum VRR
2/28/2014	0.44	7.16	16.20	2.18	34.22	65.40	0.06	0.283	0.001
3/31/2014	0.64	8.35	13.08	13.77	34.24	65.66	0.49	1.507	0.005
4/30/2014	0.65	8.67	13.35	19.40	34.26	65.92	1.07	2.047	0.010
5/31/2014	0.67	9.04	13.51	19.42	34.28	66.20	1.67	1.967	0.015
6/30/2014	0.72	9.74	13.58	19.03	34.30	66.49	2.24	1.790	0.021
7/31/2014	0.46	5.82	12.68	14.06	34.32	66.67	2.68	2.201	0.025
8/31/2014	0.86	10.83	12.65	23.61	34.34	67.01	3.41	1.986	0.031
9/30/2014	0.80	9.74	12.13	25.93	34.37	67.30	4.19	2.415	0.038
10/31/2014	0.81	9.12	11.23	41.65	34.39	67.58	5.48	4.112	0.050
11/30/2014	0.95	10.51	11.08	43.47	34.42	67.90	6.78	3.721	0.061
12/31/2014	2.31	14.19	6.14	38.29	34.49	68.34	7.97	2.245	0.072
1/31/2015	1.07	11.14	10.46	38.87	34.53	68.68	9.18	3.119	0.082
2/28/2015	1.38	12.67	9.20	48.04	34.57	69.04	10.52	3.342	0.094
3/31/2015	1.49	13.42	9.01	46.97	34.61	69.45	11.98	3.076	0.107
4/30/2015	1.32	10.94	8.27	44.60	34.65	69.78	13.32	3.544	0.118
5/31/2015	1.35	11.56	8.57	43.90	34.69	70.14	14.68	3.319	0.130
6/30/2015	1.29	12.99	10.08	44.23	34.73	70.53	16.00	3.032	0.141
7/31/2015	1.34	14.30	10.66	44.48	34.77	70.97	17.38	2.787	0.152
8/31/2015	1.36	14.76	10.89	45.13	34.82	71.43	18.78	2.745	0.164
9/30/2015	1.37	15.49	11.30	45.87	34.86	71.90	20.16	2.668	0.175
10/31/2015	1.51	17.33	11.51	46.19	34.90	72.43	21.59	2.406	0.187
11/30/2015	1.42	18.70	13.15	46.77	34.95	72.99	22.99	2.285	0.198
12/31/2015	2.17	22.90	10.56	48.03	35.01	73.70	24.48	1.877	0.209



TUNDRA OIL & GAS PARTNERSHIP

TUNDRA PIERSON UNIT No.1 HZNTL 12A-17-3-28

100/12-17-003-28W1/00

LICENSE #: 10299

ALIDA FORMATION

RESERVOIR PRESSURE SURVEY TEST

JANUARY 31st – FEBRUARY 5th, 2015

Prepared by: **DOLLCO Well Data Services**
e-mail: dollco@shaw.ca

PO Box 326
417A Mississippian Drive
Estevan, SK
S4A 2A4

Cell: (306) 421 - 7330
Fax: (306) 634 - 7976
Res: (306) 634 - 8761

E-mail: qualityw@sasktel.net

Pressure Survey Report

Company Information

Company Name
Contact
e-mail
Phone
Site Contact
Site Phone

TUNDRA OIL & GAS PARTNERSHIP
CRAIG [REDACTED]
craig.lane@tundraoilandgas.com
(204) 748-4409
DAN [REDACTED]
(204) 851-1062

Well Information

Well Name
Unique Well ID
Surface Location
Well License Number
Well Type
Well Fluid Type
Field

TUNDRA PIERSON UNIT No.1 HZNTL 12A-17-3-28
100/12-17-003-28W1/00
15D-18 / 12A-17-3-28W1
10299
Horizontal
01 Oil
PIERSON

KB Elevation (SL)
CF Elevation (SL)
GL Elevation (SL)
Distance from KB to CF (Log)
KB-GL Offset

473.20 m
469.10 m
469.10 m
4.10 m
4.10 m

Tubing ID
Tubing OD
Tubing Depth(Log KB)
Tubing Depth(TVD KB)
Casing ID
Casing OD
Casing Depth(Log KB)
Casing Depth(TVD KB)
PBTD(Log KB)
PBTD(TVD KB)

mm
mm
m
m
mm
177.8 mm
1077.00000 m
983.81000 m
m
m

Pressure Survey Report

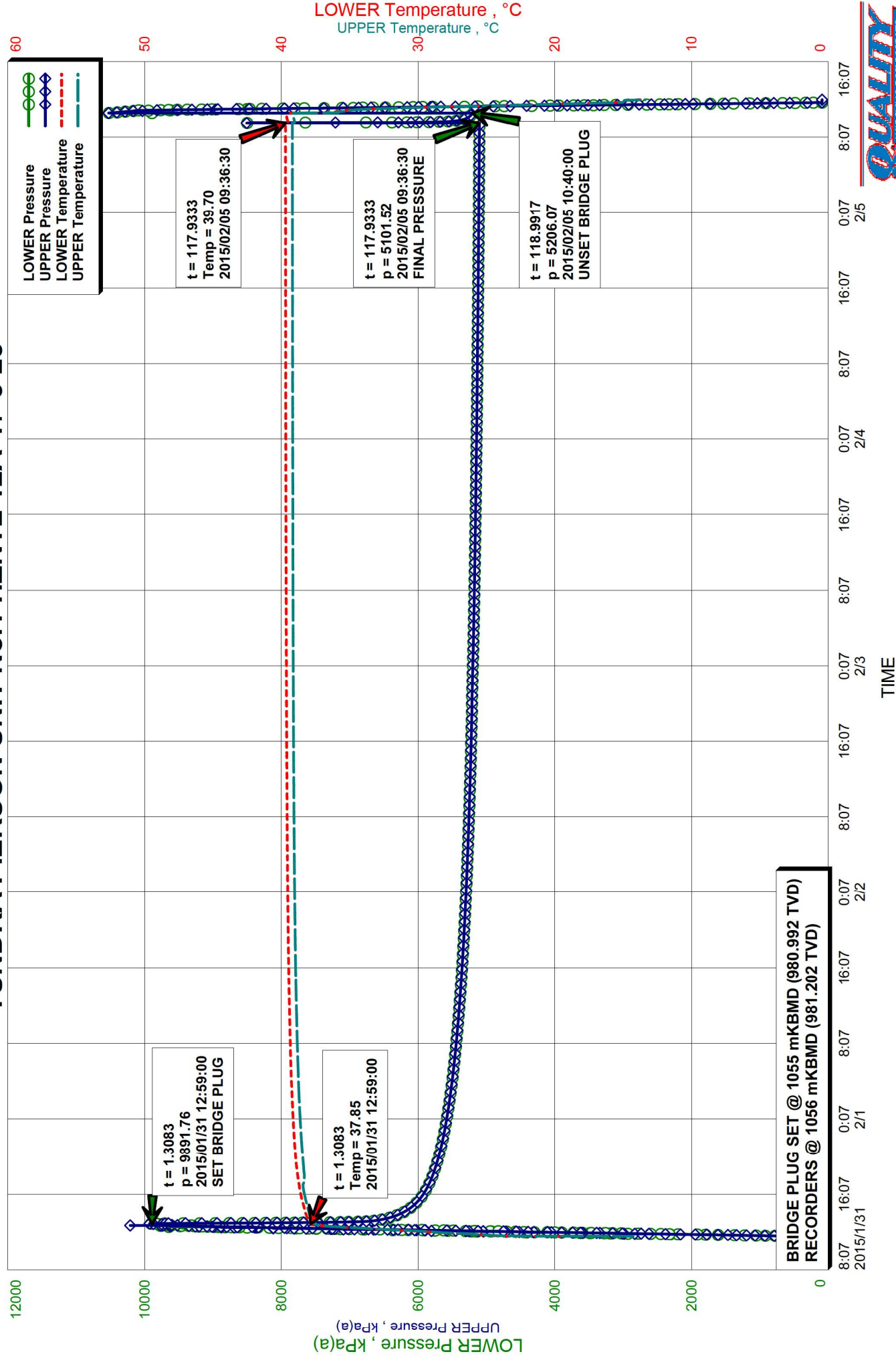
Test Information

Well Name	TUNDRA PIERSON UNIT No.1 HZNTL 12A-17-3-28
Unique Well ID	100/12-17-003-28W1/00
Surface Location	15D-18 / 12A-17-3-28W1
Well License Number	10299
Well Fluid Type	01 Oil
Test Purpose	Initial Test
Test Type	RESERVOIR PRESSURE SURVEY
Formation	ALIDA
Well Type Indicator	Horizontal
Test/Prod. Interval Top KB (Log)	1077.00 m
Test/Prod. Interval Base KB (Log)	1906.00 m
MPP(Log KB)	1491.50 m
Test/Prod Interval Top KB (TVD)	983.81 m
Test/Prod. Interval Base m KB (TVD)	986.17 m
MPP(TVD KB)	984.99 m
Tubing Pressure Initial	kPa(a)
Casing Pressure Initial	kPa(a)
Tubing Pressure: Final	kPa(a)
Casing Pressure: Final	kPa(a)
Time/Date Well Shut-In	2015/01/31 12:59:00
Final Test Date/Time	2015/02/05 09:36:30
Gauge Serial Number Used in Summary	40461
Last Measured Pressure at Run Depth	5101.52 kPa(a)
Reservoir Temperature	39.70 °C
Service Company	Quality Wireline Services Ltd.
Representative	IVORY [REDACTED]
Prepared By	DOLLCO Well Data Services
Qualified By	RICK [REDACTED]
Report Date	2014/02/13

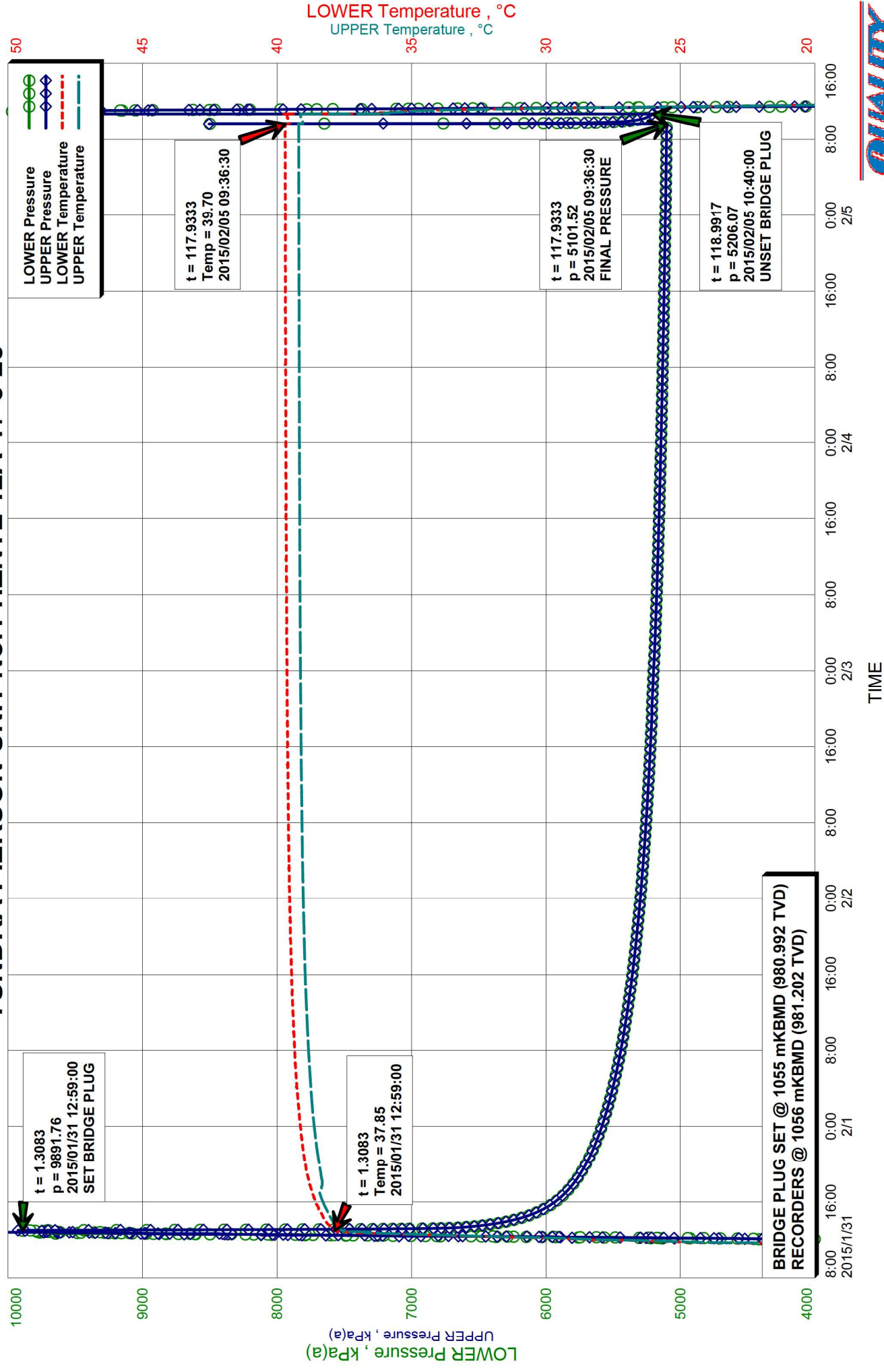
RECORDERS SET @ 1056 mKBMD (981.202 TVD), BELOW BRIDGE PLUG
OPEN HOLE: 1077 - 1906 mKBMD (983.81 - 986.17 TVD)



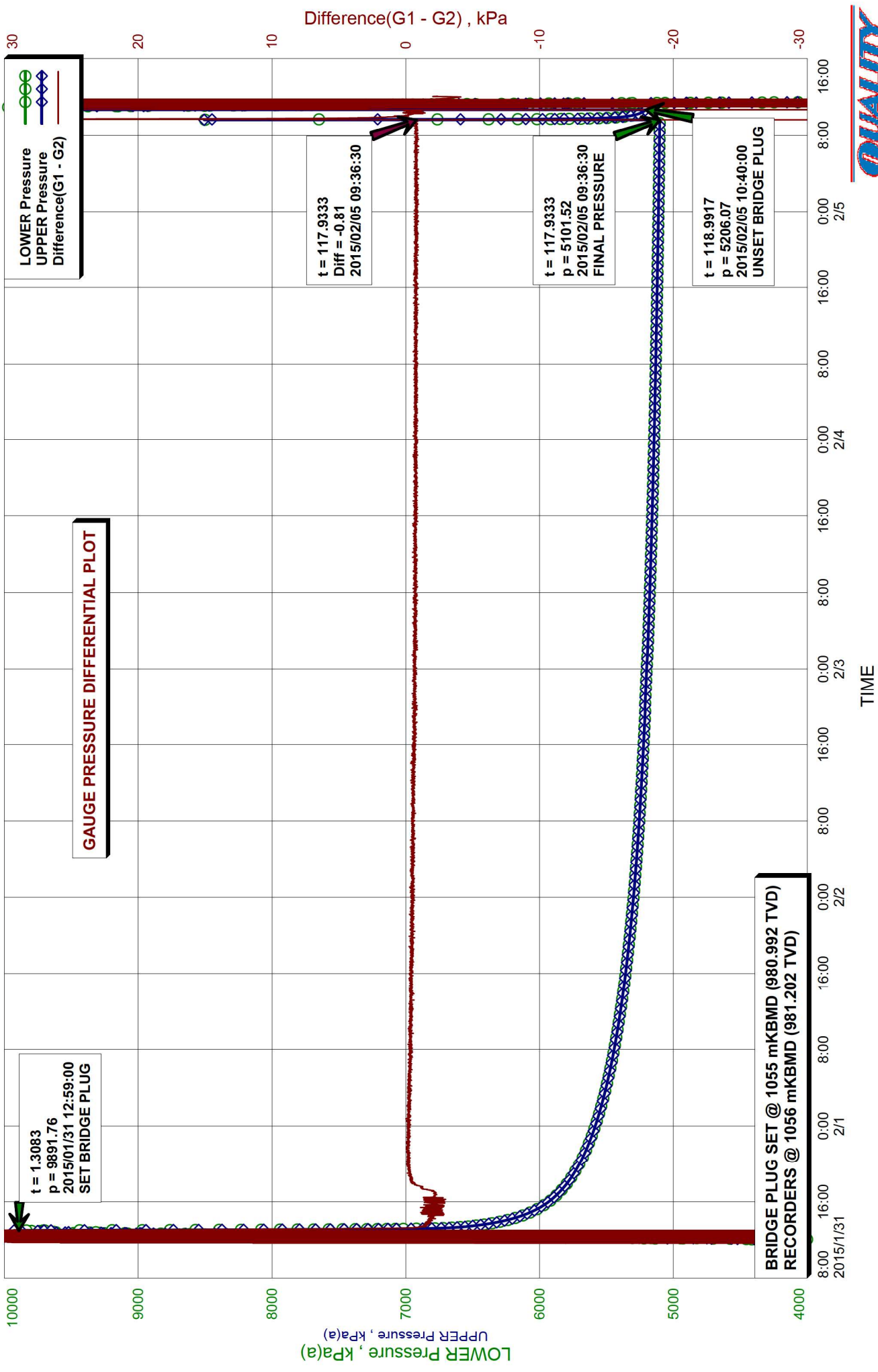
TUNDRA PIERSON UNIT No.1 HZNTL 12A-17-3-28



TUNDRA PIERSON UNIT No.1 HZNTL 12A-17-3-28



TUNDRA PIERSON UNIT No.1 HZNTL 12A-17-3-28



Recorder Information

Company Name	TUNDRA OIL & GAS PARTNERSHIP
Unique Well ID	100/12-17-003-28W1/00
Well Name	TUNDRA PIERSON UNIT No.1 HZNTL 12A-17-3-28
Formation	ALIDA
Start Test Date	2015/01/31
Final Test Date	2015/02/05

Gauge 1

Gauge Name	LOWER	Gauge Type	ELECTRONIC
Gauge Serial Number	40461	Gauge Manufacturer	REAL TIME MEASUREMENTS
Run Depth (Log KB)	1056.00 m	Gauge Model	KC2 STRAIN
Date of Last Calibration	2011/12/03	Maximum Recorder Range	10340.00 kPa
Gauge Start Date	2015/01/31	Gauge Start Time	11:40:30
Gauge Stop Date	2015/02/05	Gauge Stop Time	12:05:00
Date Gauge On Bottom	2015/01/31	Time Gauge On Bottom	12:58:00
Date Gauge Off Bottom	2015/02/05	Time Gauge Off Bottom	10:50:30

Gauge 2

Gauge Name	UPPER	Gauge Type	ELECTRONIC
Gauge Serial Number	40458	Gauge Manufacturer	REAL TIME MEASUREMENTS
Run Depth (Log KB)	1056.00 m	Gauge Model	KC2 STRAIN
Date of Last Calibration	2011/12/03	Maximum Recorder Range	10340.00 kPa
Gauge Start Date	2015/01/31	Gauge Start Time	11:40:30
Gauge Stop Date	2015/02/05	Gauge Stop Time	12:05:00
Date Gauge On Bottom	2015/01/31	Time Gauge On Bottom	12:58:00
Date Gauge Off Bottom	2015/02/05	Time Gauge Off Bottom	10:50:30

TUNDRA OIL & GAS PARTNERSHIP
100/12-17-003-28W1/00
Start Test Date: 2015/01/31
Final Test Date: 2015/02/05

RESERVOIR PRESSURE SURVEY
RECORDERS @ 1056 mKBMD (981.202 TVD)

TUNDRA PIERSON UNIT No.1 HZNTL 12A-17-3-28
Formation: ALIDA

	LOWER Date yyyy/mm/dd	LOWER Clk Time hh:mm:ss	LOWER Time hr	LOWER Pres. kPa(a)	LOWER Temp. °C	UPPER Time hr	UPPER Pres. kPa(a)	UPPER Temp. °C	Diff. G1 - G2 kPa
1	2015/01/31	11:40:30	0.0000	343.91	18.76	0.0000	452.96	14.26	-109.06
2	2015/01/31	11:40:30	0.0000	RIH, ACTIVATE RECORDERS S/N: 40461(L) & 40458(U)					
3	2015/01/31	11:41:00	0.0083	501.69	21.09	0.0083	506.80	18.16	-5.11
4	2015/01/31	12:40:30	1.0000	9645.37	36.02	1.0000	8429.30	35.68	1216.06
5	2015/01/31	12:58:00	1.2917	9791.24	37.84	1.2917	9792.85	37.56	-1.61
6	2015/01/31	12:58:00	1.2917	RECORDERS ON BOTTOM @ 1056 mKBMD (981.202 TVD)					
7	2015/01/31	12:58:30	1.3000	9796.91	37.85	1.3000	9873.86	37.55	-76.95
8	2015/01/31	12:59:00	1.3083	9891.76	37.85	1.3083	9896.05	37.52	-4.30
9	2015/01/31	12:59:00	1.3083	SET BRIDGE PLUG @ 1055 mKBMD (980.992 TVD)					
10	2015/01/31	12:59:30	1.3167	9898.61	37.85	1.3167	9901.26	37.50	-2.65
11	2015/01/31	13:40:30	2.0000	6397.97	38.11	2.0000	6399.55	37.86	-1.58
12	2015/01/31	14:40:30	3.0000	6108.86	38.33	3.0000	6110.66	38.06	-1.80
13	2015/01/31	15:40:30	4.0000	5965.60	38.51	4.0000	5968.38	38.25	-2.77
14	2015/01/31	16:40:30	5.0000	5875.44	38.65	5.0000	5877.57	38.38	-2.13
15	2015/01/31	17:40:30	6.0000	5809.74	38.77	6.0000	5810.75	38.33	-1.01
16	2015/01/31	18:40:30	7.0000	5758.44	38.85	7.0000	5758.73	38.36	-0.29
17	2015/01/31	19:40:30	8.0000	5715.30	38.93	8.0000	5715.57	38.41	-0.27
18	2015/01/31	20:40:30	9.0000	5678.53	38.99	9.0000	5678.82	38.47	-0.29
19	2015/01/31	21:40:30	10.0000	5646.43	39.04	10.0000	5646.50	38.52	-0.07
20	2015/01/31	22:40:30	11.0000	5617.95	39.08	11.0000	5618.10	38.56	-0.14
21	2015/01/31	23:40:30	12.0000	5592.14	39.12	12.0000	5592.29	38.61	-0.15
22	2015/02/01	00:40:30	13.0000	5568.75	39.16	13.0000	5569.03	38.64	-0.28
23	2015/02/01	01:40:30	14.0000	5547.37	39.19	14.0000	5547.56	38.68	-0.19
24	2015/02/01	02:40:30	15.0000	5527.68	39.22	15.0000	5527.92	38.71	-0.24
25	2015/02/01	03:40:30	16.0000	5509.18	39.25	16.0000	5509.47	38.73	-0.29
26	2015/02/01	04:40:30	17.0000	5492.02	39.28	17.0000	5492.30	38.76	-0.28
27	2015/02/01	05:40:30	18.0000	5476.30	39.30	18.0000	5476.68	38.78	-0.38
28	2015/02/01	06:40:30	19.0000	5461.56	39.32	19.0000	5461.80	38.80	-0.24
29	2015/02/01	07:40:30	20.0000	5447.49	39.34	20.0000	5447.78	38.83	-0.29
30	2015/02/01	08:40:30	21.0000	5434.35	39.35	21.0000	5434.69	38.84	-0.34
31	2015/02/01	09:40:30	22.0000	5422.15	39.37	22.0000	5422.49	38.86	-0.34
32	2015/02/01	10:40:30	23.0000	5410.28	39.39	23.0000	5410.62	38.88	-0.34
33	2015/02/01	11:40:30	24.0000	5399.21	39.40	24.0000	5399.62	38.89	-0.41
34	2015/02/01	12:40:30	25.0000	5388.77	39.42	25.0000	5389.11	38.91	-0.34
35	2015/02/01	13:40:30	26.0000	5378.69	39.44	26.0000	5379.13	38.92	-0.44
36	2015/02/01	14:40:30	27.0000	5369.21	39.44	27.0000	5369.62	38.94	-0.41
37	2015/02/01	15:40:30	28.0000	5360.21	39.46	28.0000	5360.60	38.95	-0.38
38	2015/02/01	16:40:30	29.0000	5351.54	39.46	29.0000	5351.96	38.96	-0.42
39	2015/02/01	17:40:30	30.0000	5343.14	39.48	30.0000	5343.50	38.97	-0.36
40	2015/02/01	18:40:30	31.0000	5335.02	39.48	31.0000	5335.51	38.98	-0.49

LOWER Serial Number: 40461 Start Date: 2015/01/31 11:40:30 Run Depth: 1056.00
UPPER Serial Number: 40458 Start Date: 2015/01/31 11:40:30 Run Depth: 1056.00
Print Filter: Print every 1 hour

RESERVOIR PRESSURE SURVEY

RECORDERS @ 1056 mKBMD (981.202 TVD)

	LOWER Date yyyy/mm/dd	LOWER Clk Time hh:mm:ss	LOWER Time hr	LOWER Pres. kPa(a)	LOWER Temp. °C	UPPER Time hr	UPPER Pres. kPa(a)	UPPER Temp. °C	Diff. G1 - G2 kPa
41	2015/02/01	19:40:30	32.0000	5327.41	39.50	32.0000	5327.74	38.99	-0.33
42	2015/02/01	20:40:30	33.0000	5320.06	39.51	33.0000	5320.51	39.00	-0.45
43	2015/02/01	21:40:30	34.0000	5313.05	39.51	34.0000	5313.56	39.01	-0.51
44	2015/02/01	22:40:30	35.0000	5306.41	39.52	35.0000	5306.83	39.02	-0.42
45	2015/02/01	23:40:30	36.0000	5299.75	39.53	36.0000	5300.37	39.02	-0.62
46	2015/02/02	00:40:30	37.0000	5293.62	39.54	37.0000	5294.04	39.03	-0.43
47	2015/02/02	01:40:30	38.0000	5287.75	39.55	38.0000	5288.25	39.04	-0.50
48	2015/02/02	02:40:30	39.0000	5282.18	39.55	39.0000	5282.67	39.04	-0.49
49	2015/02/02	03:40:30	40.0000	5276.67	39.56	40.0000	5277.22	39.05	-0.55
50	2015/02/02	04:40:30	41.0000	5271.42	39.56	41.0000	5272.02	39.06	-0.60
51	2015/02/02	05:40:30	42.0000	5266.22	39.57	42.0000	5266.80	39.06	-0.57
52	2015/02/02	06:40:30	43.0000	5261.26	39.58	43.0000	5261.90	39.07	-0.64
53	2015/02/02	07:40:30	44.0000	5256.60	39.58	44.0000	5257.14	39.07	-0.53
54	2015/02/02	08:40:30	45.0000	5251.97	39.58	45.0000	5252.44	39.08	-0.47
55	2015/02/02	09:40:30	46.0000	5247.49	39.59	46.0000	5247.96	39.08	-0.46
56	2015/02/02	10:40:30	47.0000	5243.13	39.58	47.0000	5243.66	39.08	-0.53
57	2015/02/02	11:40:30	48.0000	5239.08	39.59	48.0000	5239.51	39.09	-0.44
58	2015/02/02	12:40:30	49.0000	5235.01	39.60	49.0000	5235.67	39.09	-0.66
59	2015/02/02	13:40:30	50.0000	5231.14	39.60	50.0000	5231.76	39.10	-0.62
60	2015/02/02	14:40:30	51.0000	5227.48	39.59	51.0000	5228.04	39.10	-0.56
61	2015/02/02	15:40:30	52.0000	5223.71	39.61	52.0000	5224.33	39.10	-0.62
62	2015/02/02	16:40:30	53.0000	5220.17	39.61	53.0000	5220.74	39.11	-0.57
63	2015/02/02	17:40:30	54.0000	5216.61	39.62	54.0000	5217.30	39.11	-0.68
64	2015/02/02	18:40:30	55.0000	5213.21	39.62	55.0000	5213.87	39.11	-0.66
65	2015/02/02	19:40:30	56.0000	5211.64	39.62	56.0000	5212.41	39.12	-0.77
66	2015/02/02	20:40:30	57.0000	5209.44	39.63	57.0000	5210.06	39.12	-0.62
67	2015/02/02	21:40:30	58.0000	5206.31	39.62	58.0000	5206.93	39.13	-0.62
68	2015/02/02	22:40:30	59.0000	5203.25	39.63	59.0000	5203.92	39.12	-0.67
69	2015/02/02	23:40:30	60.0000	5200.26	39.64	60.0000	5200.90	39.13	-0.64
70	2015/02/03	00:40:30	61.0000	5197.40	39.63	61.0000	5197.98	39.13	-0.58
71	2015/02/03	01:40:30	62.0000	5192.85	39.64	62.0000	5193.49	39.14	-0.64
72	2015/02/03	02:40:30	63.0000	5189.93	39.64	63.0000	5190.64	39.14	-0.71
73	2015/02/03	03:40:30	64.0000	5187.07	39.64	64.0000	5187.73	39.14	-0.66
74	2015/02/03	04:40:30	65.0000	5184.48	39.64	65.0000	5185.10	39.14	-0.62
75	2015/02/03	05:40:30	66.0000	5181.91	39.64	66.0000	5182.58	39.14	-0.68
76	2015/02/03	06:40:30	67.0000	5179.33	39.64	67.0000	5180.04	39.14	-0.71
77	2015/02/03	07:40:30	68.0000	5176.90	39.64	68.0000	5177.58	39.14	-0.68
78	2015/02/03	08:40:30	69.0000	5174.51	39.65	69.0000	5175.19	39.15	-0.68
79	2015/02/03	09:40:30	70.0000	5172.18	39.65	70.0000	5172.89	39.15	-0.71
80	2015/02/03	10:40:30	71.0000	5169.87	39.66	71.0000	5170.57	39.15	-0.71

LOWER Serial Number: 40461 Start Date: 2015/01/31 11:40:30 Run Depth: 1056.00

UPPER Serial Number: 40458 Start Date: 2015/01/31 11:40:30 Run Depth: 1056.00

Print Filter: Print every 1 hour

RESERVOIR PRESSURE SURVEY

RECORDERS @ 1056 mKBMD (981.202 TVD)

	LOWER Date yyyy/mm/dd	LOWER Clk Time hh:mm:ss	LOWER Time hr	LOWER Pres. kPa(a)	LOWER Temp. °C	UPPER Time hr	UPPER Pres. kPa(a)	UPPER Temp. °C	Diff. G1 - G2 kPa
81	2015/02/03	11:40:30	72.0000	5167.69	39.68	72.0000	5168.18	39.15	-0.49
82	2015/02/03	12:40:30	73.0000	5165.37	39.65	73.0000	5166.21	39.16	-0.84
83	2015/02/03	13:40:30	74.0000	5163.31	39.66	74.0000	5163.99	39.16	-0.67
84	2015/02/03	14:40:30	75.0000	5161.26	39.65	75.0000	5162.04	39.16	-0.78
85	2015/02/03	15:40:30	76.0000	5159.24	39.66	76.0000	5160.00	39.16	-0.77
86	2015/02/03	16:40:30	77.0000	5157.26	39.67	77.0000	5158.06	39.16	-0.79
87	2015/02/03	17:40:30	78.0000	5155.41	39.67	78.0000	5156.05	39.16	-0.64
88	2015/02/03	18:40:30	79.0000	5153.53	39.66	79.0000	5154.19	39.16	-0.66
89	2015/02/03	19:40:30	80.0000	5151.52	39.67	80.0000	5152.35	39.16	-0.83
90	2015/02/03	20:40:30	81.0000	5149.73	39.67	81.0000	5150.41	39.17	-0.69
91	2015/02/03	21:40:30	82.0000	5147.91	39.67	82.0000	5148.54	39.17	-0.63
92	2015/02/03	22:40:30	83.0000	5145.99	39.67	83.0000	5146.77	39.17	-0.77
93	2015/02/03	23:40:30	84.0000	5144.28	39.68	84.0000	5145.17	39.17	-0.88
94	2015/02/04	00:40:30	85.0000	5142.53	39.67	85.0000	5143.30	39.17	-0.77
95	2015/02/04	01:40:30	86.0000	5140.93	39.68	86.0000	5141.69	39.17	-0.76
96	2015/02/04	02:40:30	87.0000	5139.39	39.67	87.0000	5140.09	39.17	-0.70
97	2015/02/04	03:40:30	88.0000	5137.83	39.68	88.0000	5138.51	39.17	-0.67
98	2015/02/04	04:40:30	89.0000	5136.32	39.68	89.0000	5137.13	39.17	-0.81
99	2015/02/04	05:40:30	90.0000	5134.93	39.68	90.0000	5135.59	39.17	-0.67
100	2015/02/04	06:40:30	91.0000	5133.43	39.68	91.0000	5134.20	39.18	-0.77
101	2015/02/04	07:40:30	92.0000	5131.97	39.68	92.0000	5132.75	39.17	-0.79
102	2015/02/04	08:40:30	93.0000	5130.61	39.68	93.0000	5131.35	39.17	-0.73
103	2015/02/04	09:40:30	94.0000	5129.12	39.68	94.0000	5129.85	39.18	-0.73
104	2015/02/04	10:40:30	95.0000	5127.73	39.68	95.0000	5128.40	39.18	-0.68
105	2015/02/04	11:40:30	96.0000	5126.37	39.68	96.0000	5127.12	39.18	-0.76
106	2015/02/04	12:40:30	97.0000	5124.85	39.69	97.0000	5125.62	39.18	-0.77
107	2015/02/04	13:40:30	98.0000	5123.57	39.68	98.0000	5124.34	39.18	-0.77
108	2015/02/04	14:40:30	99.0000	5122.27	39.69	99.0000	5123.10	39.18	-0.84
109	2015/02/04	15:40:30	100.0000	5121.14	39.69	100.0000	5121.80	39.18	-0.67
110	2015/02/04	16:40:30	101.0000	5119.87	39.69	101.0000	5120.67	39.19	-0.80
111	2015/02/04	17:40:30	102.0000	5118.58	39.69	102.0000	5119.44	39.18	-0.86
112	2015/02/04	18:40:30	103.0000	5117.41	39.69	103.0000	5118.14	39.18	-0.73
113	2015/02/04	19:40:30	104.0000	5116.15	39.69	104.0000	5116.91	39.19	-0.76
114	2015/02/04	20:40:30	105.0000	5115.01	39.68	105.0000	5115.72	39.19	-0.71
115	2015/02/04	21:40:30	106.0000	5113.84	39.69	106.0000	5114.54	39.19	-0.70
116	2015/02/04	22:40:30	107.0000	5112.58	39.69	107.0000	5113.33	39.19	-0.75
117	2015/02/04	23:40:30	108.0000	5111.33	39.69	108.0000	5112.20	39.19	-0.86
118	2015/02/05	00:40:30	109.0000	5110.26	39.69	109.0000	5111.10	39.19	-0.83
119	2015/02/05	01:40:30	110.0000	5109.23	39.69	110.0000	5109.99	39.19	-0.76
120	2015/02/05	02:40:30	111.0000	5108.18	39.70	111.0000	5108.83	39.19	-0.64

LOWER Serial Number: 40461 Start Date: 2015/01/31 11:40:30 Run Depth: 1056.00

UPPER Serial Number: 40458 Start Date: 2015/01/31 11:40:30 Run Depth: 1056.00

Print Filter: Print every 1 hour

TUNDRA OIL & GAS PARTNERSHIP
100/12-17-003-28W1/00
Start Test Date: 2015/01/31
Final Test Date: 2015/02/05

RESERVOIR PRESSURE SURVEY
RECORDERS @ 1056 mKBMD (981.202 TVD)

TUNDRA PIERSON UNIT No.1 HZNTL 12A-17-3-28
Formation: ALIDA

	LOWER Date yyyy/mm/dd	LOWER Clk Time hh:mm:ss	LOWER Time hr	LOWER Pres. kPa(a)	LOWER Temp. °C	UPPER Time hr	UPPER Pres. kPa(a)	UPPER Temp. °C	Diff. G1 - G2 kPa
121	2015/02/05	03:40:30	112.0000	5107.13	39.70	112.0000	5107.88	39.19	-0.75
122	2015/02/05	04:40:30	113.0000	5106.19	39.69	113.0000	5107.03	39.19	-0.84
123	2015/02/05	05:40:30	114.0000	5105.23	39.70	114.0000	5106.03	39.19	-0.80
124	2015/02/05	06:40:30	115.0000	5104.27	39.69	115.0000	5105.10	39.19	-0.83
125	2015/02/05	07:40:30	116.0000	5103.35	39.70	116.0000	5104.10	39.19	-0.75
126	2015/02/05	08:40:30	117.0000	5102.37	39.70	117.0000	5103.17	39.20	-0.80
127	2015/02/05	09:36:30	117.9333	5101.52	39.70	117.9333	5102.33	39.19	-0.81
128	2015/02/05	09:36:30	117.9333	FINAL PRESSURE, PREPARE TO UNSET BRIDGE PLUG					
129	2015/02/05	09:37:00	117.9417	5101.51	39.70	117.9417	8506.59	39.21	-3405.08
130	2015/02/05	09:40:30	118.0000	6762.76	39.54	118.0000	6591.55	39.04	171.22
131	2015/02/05	10:40:00	118.9917	5206.07	39.63	118.9917	5206.81	39.14	-0.74
132	2015/02/05	10:40:00	118.9917	BRIDGE PLUG IS UNSET					
133	2015/02/05	10:40:30	119.0000	9891.93	39.78	119.0000	10527.27	39.14	-635.34
134	2015/02/05	10:50:30	119.1667	10268.06	35.95	119.1667	10263.02	35.64	5.03
135	2015/02/05	10:50:30	119.1667	PULL OUT OF HOLE					
136	2015/02/05	10:51:00	119.1750	10206.42	35.90	119.1750	10192.39	35.59	14.03
137	2015/02/05	11:40:30	120.0000	1497.73	18.61	120.0000	1400.51	18.29	97.22
138	2015/02/05	12:05:00	120.4083	88.40	13.75	120.4083	90.79	13.39	-2.39
139	2015/02/05	12:05:00	120.4083	RECORDERS AT SURFACE					

LOWER Serial Number: 40461 Start Date: 2015/01/31 11:40:30 Run Depth: 1056.00
UPPER Serial Number: 40458 Start Date: 2015/01/31 11:40:30 Run Depth: 1056.00
Print Filter: Print every 1 hour



DATE: January 31 st - February 5 th , 2015	COMPANY: Tundra Oil & Gas Partnership
WELLNAME: Pierson	ADDRESS: Virden, MB
LOCATION: 15-18-12-17-3-28 W1	UWI: 100.12-17-003-28W1.00
FIELD: Pierson	FORMATION: Alida
CO HQ REP: Craig [REDACTED]	PHONE: 1204 748 4409
FIELD REP: Dan [REDACTED]	PHONE: 1204 851 1062
REPORTS TO (NAME & EMAIL ADDRESS): brett.howell@tundraoilandgas.com chris.perkins@tundraoilandgas.com robert.prefontaine@tundraoilandgas.com adam.berke@tundraoilandgas.com shirley.angus@tundraoilandgas.com allan.bertram@tundraoilandgas.com bill.jenkins@tundraoilandgas.com chris.perkins@tundraoilandgas.com craig.lane@tundraoilandgas.com eric.bjornsson@tundraoilandgas.com jane.mctaggart@tundraoilandgas.com anh.hgyen@tundraoilandgas.com justin.robertson@tundraoilandgas.com andrew.taylor@tundraoilandgas.com tim.howell@tundraoilandgas.com tyler.routledge@tundraoilandgas.com	

STATUS: Oil Well		TEST TYPE: Bridge Plug	
ESTIMATED H2S CONTENT: <10 ppm		ESTIMATED CO2 CONTENT: <10 ppm	
PRODUCING THROUGH: Tubing		SHUT IN TIME/DATE: See Discription	
KOP: 791 mKB	TVD: See Survey		LICENCE #: 10299
PBTD: N/A	TD: 1906 mKB		WELL TYPE: Horizontal
CASING SIZE: 177.8 mm	CSG WEIGHT: 34.22 / 29.76 kg/m		CSG DEPTH: 1077 mKB
TUBING SIZE: N/A	TBG WEIGHT: N/A		TBG DEPTH: N/A
Elevations KB: 473.20 mKB	GRD: 469.10 mKB		CF: 4.10 mKB

PRODUCING INTERVAL

TYPE: Open Hole	SIZE: N/A	INTERVAL: 1077 - 1906 mKB
-----------------	-----------	---------------------------

RECORDER INFORMATION

TOP S/N: 40458	FILE NAME: 15-18-12-17-3-28 W1	RANGE: 10,340 kPa
BOTTOM S/N: 40461	FILE NAME: 15-18-12-17-3-28 W1	RANGE: 10,340 kPa
TOP BATTERY S/N: N/A	BOTTOM BATTERY S/N: N/A	
CONNECT TIME: January 31 st , 2015 11:40:30	DISCONNECT TIME: February 5 th , 2015 12:12:00	

SURFACE TEMP: -20 C	LEASE CONDITION: Good
WIRELINE OPERATOR: Ivory [REDACTED]	PHONE: 1306 461 9504
WIRELINE ASSISTANT: N/A	
DIRECTIONS: N/A	

DWG WELL HEAD PRESSURES:

TUBING (before survey): N/A	CASING (before survey): N/A
TUBING (after survey): N/A	CASING (after survey): N/A

FLUID LEVEL: N/A	RUN DEPTH: N/A
TIME ON BOTTOM: N/A	TIME OFF BOTTOM: N/A

GRADIENT STOPS

DEPTH mKB:	N/A	FROM:	N/A	UNTIL:	N/A
------------	-----	-------	-----	--------	-----

COMMENTS: Tools were ran in the well by a drilling rig to collect the BHP + BHT below a bridge plug. Tools were then pulled by a service rig.

DESCRIPTION OF WORK DONE:

Tool were ran in the well by a drilling rig to collect the BHP + BHT below a bridge plug. Tools were then pulled by a service rig.

January 31st, 2015

11:40:30 - RIH

12:58:00 - On bottom

12:59:00 - Bridge plug set @1055 mKB Recorders @1056 mKB

February 5th, 2015

09:37:00 - FINAL STABLE BHP + BHT

10:41:00 - Bridge plug un-set

10:50:30 - POOH

12:05:00 - Surface

12:12:00 - Download data