

SINCLAIR UNIT NO. 11
WATERFLOOD EOR PROJECT
ANNUAL REPORT FOR 2016

June 27, 2017

Tundra Oil and Gas Partnership

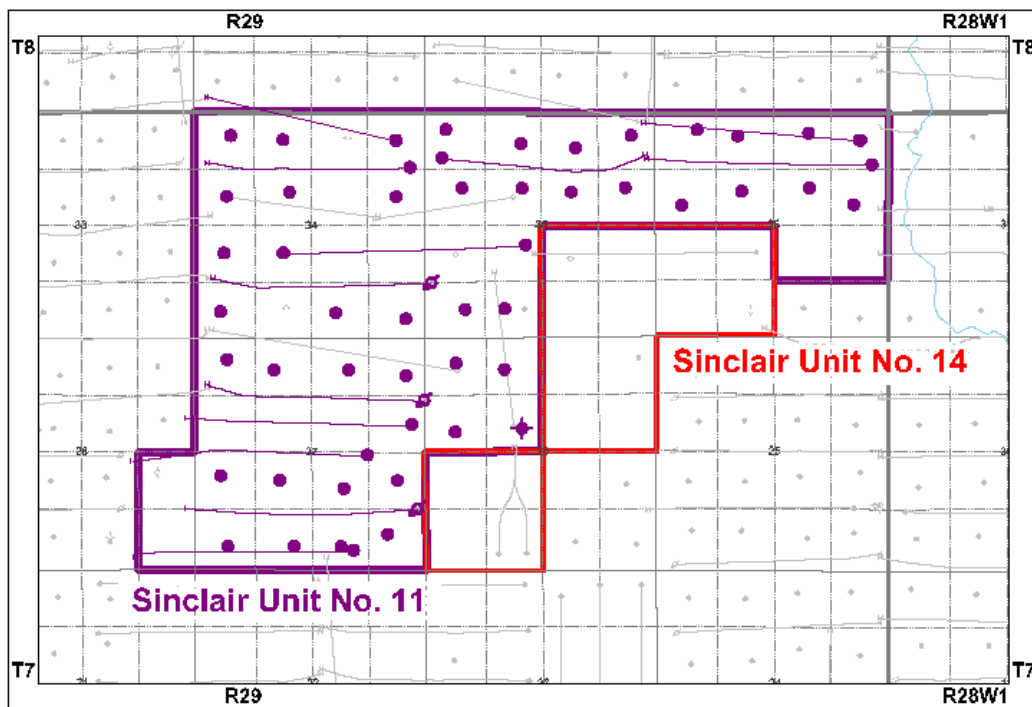
Table of Contents

Introduction	3.
Discussion	3.
Production History	3.
Waterflood Development Plan	5.
Waterflood EOR Operating Strategy and Performance	6.
Water Source and Quality	6.
Injection Wellhead Pressures	6.
Reservoir Pressure	6.
Well Servicing	6.
Waterflood Performance Discussion	7.
List of Appendices	8.
Appendix A: Injection Pattern Summary	
Appendix B: Reservoir Pressure Summary	
Appendix C: Average Monthly Injection Pressure Summary	
Appendix D: Injector Pattern Production/Injection Rates, Cumulative and VRR Plots	

INTRODUCTION

Sinclair Unit No. 11 Enhanced Oil Recovery (EOR) Waterflood Project was approved under Waterflood Order No. 47, effective August 1, 2015 with Tundra Oil and Gas (Tundra) as Operator. The Unit area contains 51 producing wells, 1 abandoned well and 3 injection wells in 60 LSDs in Township 7 Range 29 W1 as shown in the figure below.

Figure 1: Sinclair Unit No. 11 Area Outline



© 2017 Tundra. All rights reserved. Provided "as is" without any warranty. This map is not to be reproduced or disseminated and is not to be used nor cited as evidence in connection with any legal claim. TMS is implicit and not on custody or international boundaries which might be subject to recovery claims by multiple jurisdictions.

In accordance with Section 73 of the Manitoba Drilling and Production Regulation, Tundra hereby submits the following 2016 Annual Progress Report for Sinclair Unit No. 11.

DISCUSSION

Production History

For the wells included in Sinclair Unit No. 11, production started in March 2005 with the 00/09-36-007-29W1 well. Average oil production peaked at 2.39 m³/d per well in February 2008. This production was coming from 38 wells and totaled 90.65 m³/d for the

Unit. In December 2016, the Unit was producing 24.67 m³/d of oil and 40.42 m³/d of water and had an average WOR of 1.66 m³/m³. Water injection commenced in Sinclair Unit No. 11 in September 2015. The oil production rate, injection rate, and WOR for each injection pattern is presented in Appendix D. The rates and WOR are presented in Figure 2.

Figure 2: Sinclair Unit No. 11 Production/Injection Rates and WOR vs Time

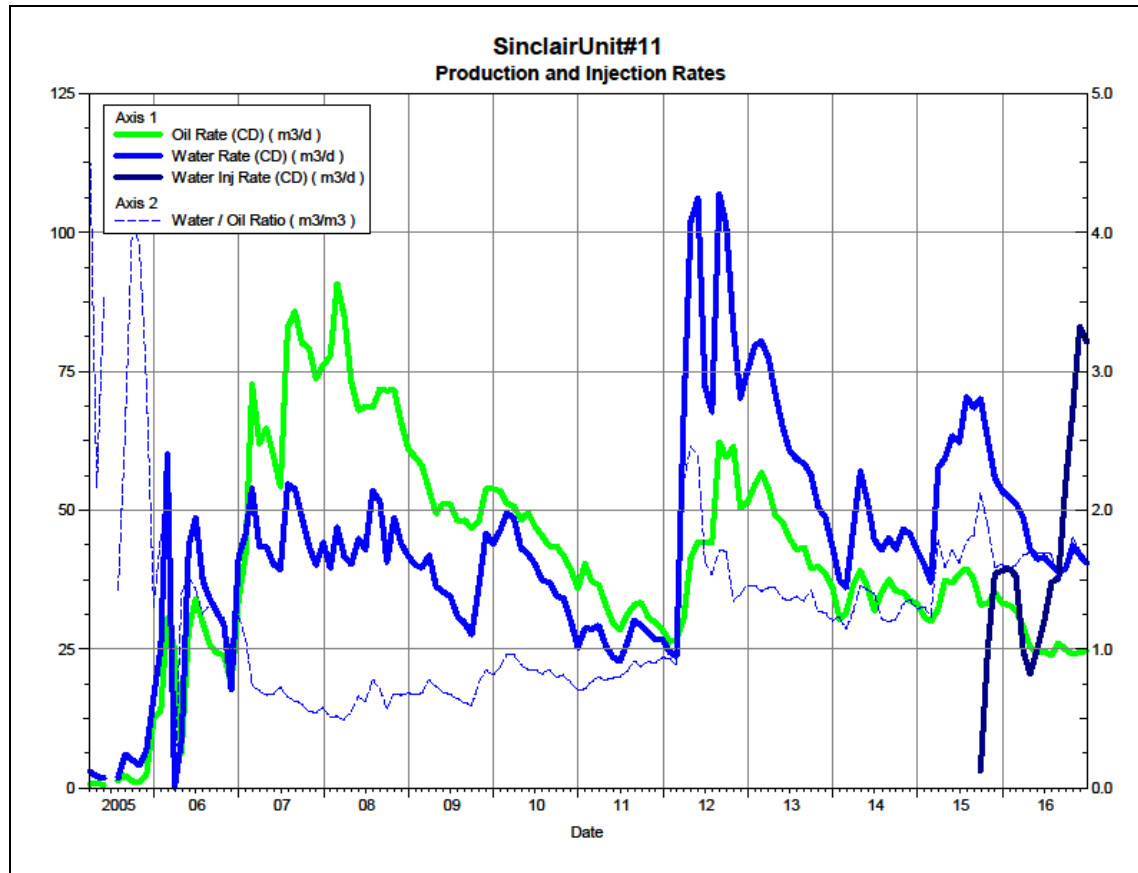
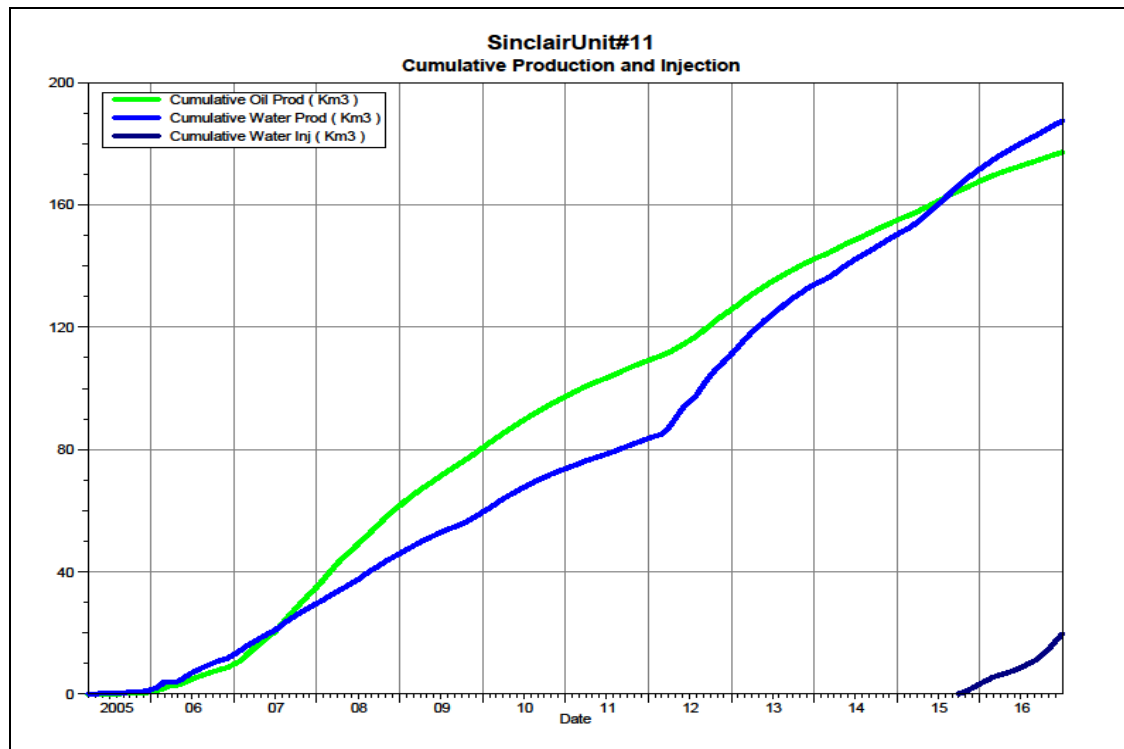


Figure 3 shows the cumulative production for Sinclair Unit No. 11 to the end of December 2016 as 177.3 e³m³ of oil, and 187.5 e³m³ of water, representing a 5.4% recovery factor of the OOIP. The cumulative water injected is 19.7 e³m³. The cumulative volume of oil, and water produced and fluid injected for each injection pattern is presented in Appendix D.

Figure 3: Sinclair Unit No. 11 Cumulative Oil, Water and Water Injected vs Time



Waterflood Development Plan

Sinclair Unit No. 11 Waterflood (WF) Development Plan

Sinclair Unit No. 11 is still in the development phase at the end of 2016. In 2014, the 02/07-27-007-29W1 proposed horizontal injector was drilled and in 2015, the 02/09-27 and 02/04-35-007-29W1 proposed horizontal injectors were drilled. All of the horizontal wells are fracture stimulated to improve the injection rates. Water injection commenced in Sinclair Unit No. 11 in September 2015 with the conversion of 02/01-27-007-29W1 to an injector. As of Dec 2016, 7 of the proposed 11 future injectors have been drilled. In 2016, the 02/09-27 and 02/04-35 wells were converted to water injection. In 2017, Tundra anticipates converting the 02/16-34, 02/13-35 and 02/16-36 existing horizontal producers to injectors.

Production performance by injector pattern is summarized in Appendix A.

Any future revisions to the waterflood development or surveillance plan would be based on new production or performance response data, technical studies, or observed reservoir behavior and reserves recovery interpretations.

Waterflood EOR Operating Strategy and Performance

Water Source and Quality

The injection water for Sinclair Unit No. 11 will be sourced from the 16-32-007-29W1 well (Lodgepole formation). The water is treated at the 03-04-007-29W1 battery where it is filtered to 0.5 microns and has scale inhibitor added. The injection water is then distributed to the injectors through the dedicated infrastructure system.

Injection Wellhead Pressures

Injection started in this Unit in September 2015. The average monthly wellhead injection pressure for each injection well is summarized in Appendix C. Since injection in this Unit is still in the early stages, the injector(s) are still building up to a target injection pressure of 6300 kPaa.

Reservoir Pressure

Where practical, Tundra is committed to collecting pressure data from newly drilled injection wells. For Sinclair Unit No. 11, pressure data taken in 2014-2015 from 3 locations is available. A summary table is presented in Appendix B. Pressures are corrected to a common datum of -450 m SS for comparison with other units in the area.

Well Servicing

The following table summarizes the well servicing performed within Sinclair Unit No. 11 during 2016:

Table 1: Sinclair Unit No. 11 Well Servicing

100.11-35-007-29W1.00	Rigless Acid Stimulation	12/8/2016
100.16-27-007-29W1.00	Rigless Acid Stimulation	12/23/2016
102.04-35-007-29W1.00	WIW Conversion	7/21/2016
102.09-27-007-29W1.00	WIW Conversion	7/25/2016
102.13-35-007-29W1.00	Cemented Liner Cleanout	9/12/2016
102.16-36-007-29W1.00	Cemented Liner Cleanout	9/8/2016

Waterflood Performance Discussion

At the end of 2016, Sinclair Unit No. 11 waterflood area had 3 injection patterns in place. Water injection began in September 2015, after the conversion of 02/01-27-007-29W1 to an injector. The waterflood area had 7 of the proposed 11 horizontal injection wells drilled (4 producing, 3 injectors) at the end of 2016. Tundra is planning to convert 3 more locations to injection in 2017.

Plots of the production and injection data along with the VRR information is presented in Appendix D for each of the injection patterns.

List of Appendices

Appendix A: Injection Pattern Summary

Appendix B: Reservoir Pressure Summary

Appendix C: Average Monthly Injection Pressure Summary

Appendix D: Injector Pattern Production/Injection Rates, Cumulative and VRR Plots
for the following injectors:

XX/11-26-007-29W1/0

XX/13-26-007-29W1/0

102/01-27-007-29W1/0

102/07-27-007-29W1/0

102/09-27-007-29W1/0

XX/12-34-007-29W1/0

102/16-34-007-29W1/0

102/04-35-007-29W1/0

XX/11-35-007-29W1/0

102/13-35-007-29W1/0

102/16-36-007-29W1/0

Appendix A

Sinclair Unit No. 11 Injection Pattern Summary as of December 2016

Pattern Name	Injector BH Location (007-29W1)	Injector Surf. Location (007-29W1)	Status	No. of Supported Wells	Supported Wells (007-29W1)	Allocation Factor	Pattern Prod Start Month	Inj Start Month	Oil Rate (m³/d)	Water Rate (m³/d)	WOR (m³/m³)	Water Injection (m³/d)	Cum Oil (E³m³)	Cum Water (E³m³)	Cum Inj Water (E³m³)	Monthly VRR	Cum VRR
XX/11-26-007-29W1/0	XX/11-26	-	Future Location	6	11-26, 12-26, 13-26, 14-26, 03-35, 04-35	0.5	Nov 2005	-	1.25	1.00	0.80	-	12.4	8.4	0.0	0.000	0.000
XX/13-26-007-29W1/0	XX/13-26	-	Future Location	9	13-26, 13-27, 14-27, 15-27, 16-27, 01-34, 02-34, 04-34, 4-35	0.5	Jan 2006	-	1.60	0.87	0.54	-	18.7	9.6	0.0	0.000	0.000
02/01-27-007-29W1/0	02/01-27	02/08-28	WTR Injection	9	01-27, 02-27, 02/02-27, 03-27, 04-27, 05-27, 06-27, 07-27, 08-27	0.5	Nov 2005	Sep 2015	1.09	3.35	3.08	3.0	10.0	28.4	12.4	0.672	3.149
02/07-27-007-29W1/0	02/07-27	02/07-28	Capable of OIL Prod	5	05-27, 06-27, 07-27, 08-27, 09-27	0.5	Nov 2005	-	2.01	8.68	4.31	-	8.9	20.1	0.0	0.000	0.000
02/09-27-007-29W1/0	02/09-27	02/13-27	WTR Injection	6	12-26, 09-27, 13-27, 14-27, 15-27, 16-27	0.5	Jan 2006	Sep 2016	1.10	2.85	2.59	38.6	15.1	16.8	3.5	9.594	0.492
XX/12-34-007-29W1/0	XX/12-34	-	Future Location	5	06-35, 05-34, 06-34, 11-34, 12-34,	0.2 0.5	Mar 2006	-	1.33	1.87	1.41	-	8.6	8.8	0.0	0.000	0.000
02/16-34-007-29W1/0	02/16-34	02/13-34	Capable of OIL Prod	6	09-34, 11-34, 12-34, 13-34, 14-34, 16-34	0.5	Jul 2005	-	3.14	2.86	0.91	-	16.9	18.1	0.0	0.000	0.000
02/04-35-007-29W1/0	02/04-35	02/05-34	WTR Injection	7	01-34, 02-34, 04-34, 05-34, 06-34, 04-35, 06-35	0.5	Jan 2007	Aug 2016	1.96	4.31	2.20	38.6	14.6	21.7	3.8	6.020	0.360
XX/11-35-007-29W1/0	XX/11-35	-	Future Location	4	06-35, 09-34, 11-35, 12-35	0.3 0.5	Jul 2005	-	0.74	2.81	3.77	-	4.3	8.4	0.0	0.000	0.000
02/13-35-007-29W1/0	02/13-35	02/16-35	Capable of OIL Prod	8	09-35, 10-35, 11-35, 12-35, 13-35, 14-35, 15-35, 16-35	0.5	Jan 2007	-	2.17	2.99	1.38	-	16.6	10.2	0.0	0.000	0.000
02/16-36-007-29W1/0	02/16-36	02/16-35	Capable of OIL Prod	8	09-36, 10-36, 11-36, 12-36, 13-36, 14-36, 15-36, 16-36	0.5	Mar 2005	-	5.17	4.62	0.89	-	18.8	11.8	0.0	0.000	0.000

APPENDIX B

Sinclair Unit No. 11 - Pressure Summary

Location	Test Date	Final Pressure (kPaa)	MPP (mTVD)	KB	Datum Depth	Gradient	Pressure @ -450 masl
02/07-27-007-29W1/0	Mar 12, 2014 - Feb 5, 2015	4950.4	1002.25	526.4	-450	8.25	4737
02/09-27-007-29W1/0	Jan 29 - Feb 12, 2015	2965.1	1004.83	525.8	-450	8.25	2726
02/04-35-007-29W1/0	Feb 1 - 20, 2015	6958.0	992.74	524.3	-450	8.25	6806

Appendix C

Month	Average Monthly Injection Pressure (kPag)		
	102/01-27	102/09-27	102/04-35
Jan-15	-	-	-
Feb-15	-	-	-
Mar-15	-	-	-
Apr-15	-	-	-
May-15	-	-	-
Jun-15	-	-	-
Jul-15	-	-	-
Aug-15	-	-	-
Sep-15	-3	-	-
Oct-15	-82	-	-
Nov-15	-89	-	-
Dec-15	-88	-	-
Jan-16	-86	-	-
Feb-16	-6	-	-
Mar-16	301	-	-
Apr-16	98	-	-
May-16	1060	-	-
Jun-16	2246	-	-
Jul-16	4430	-	-
Aug-16	4406	-	-22
Sep-16	4943	-62	-71
Oct-16	4846	-81	-83
Nov-16	4643	-87	-85
Dec-16	4619	-84	-83

Appendix D

Rates and VRR Plots

Pattern: 02/01-27-007-29Inj Set: SinclairUnit#11

Oil Formation Vol Factor : 1.07100 m3/m3

Water Formation Vol Factor : 1.00150 m3/m3

Water / Oil Ratio : 2.88 m3/m3

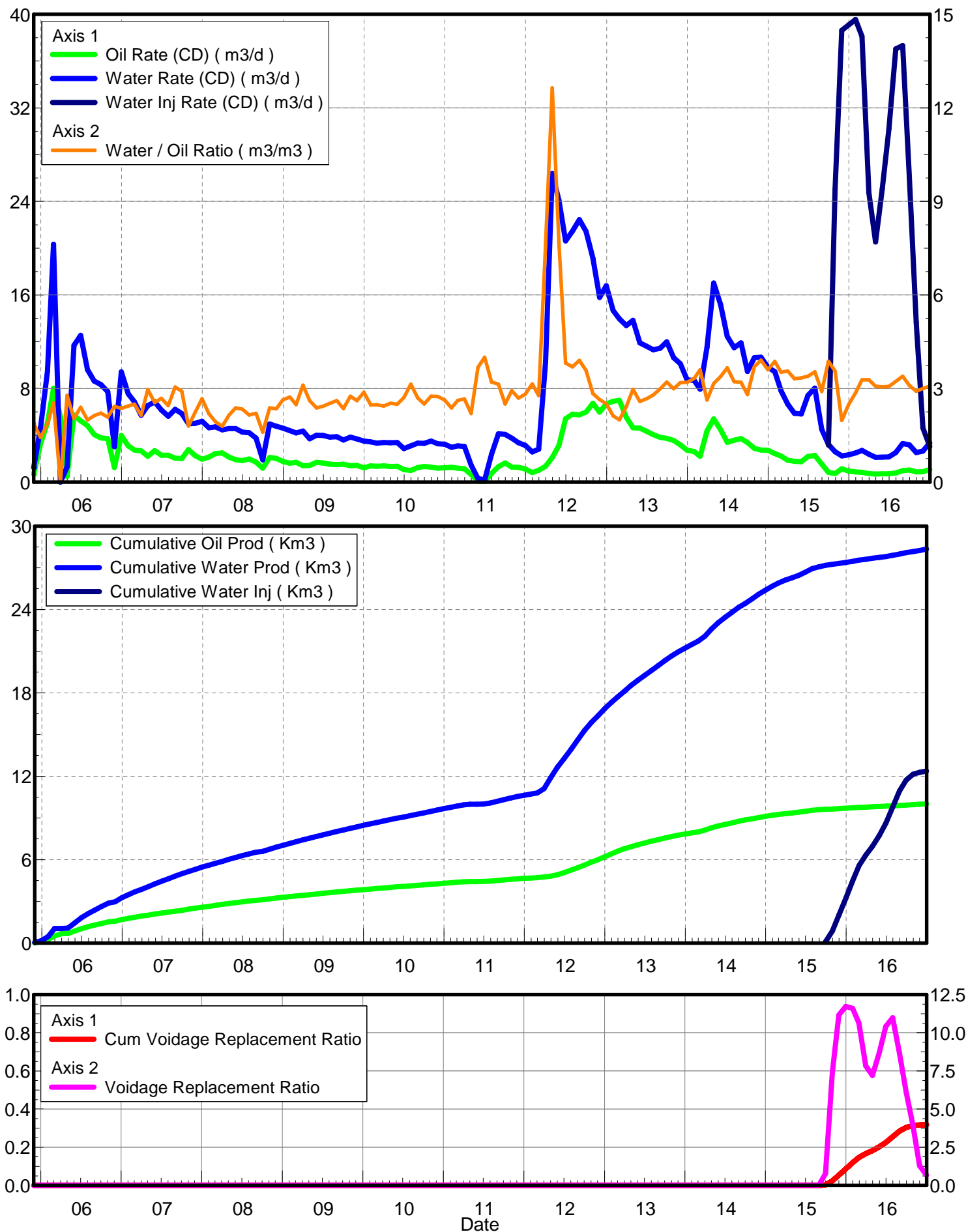
June 27, 2017

Operator: TUNDRA_OIL_&_GAS_LIMITED

Oil Rate (CD) : 1.05 m3/d

Water Rate (CD) : 2.60 m3/d

Water Inj Rate (CD) : 2.84 m3/d



Pattern: 02/27-007-29Inj Set: SinclairUnit#11

Oil Formation Vol Factor : 1.07100 m3/m3

Water Formation Vol Factor : 1.00150 m3/m3

Water / Oil Ratio : 7.36 m3/m3

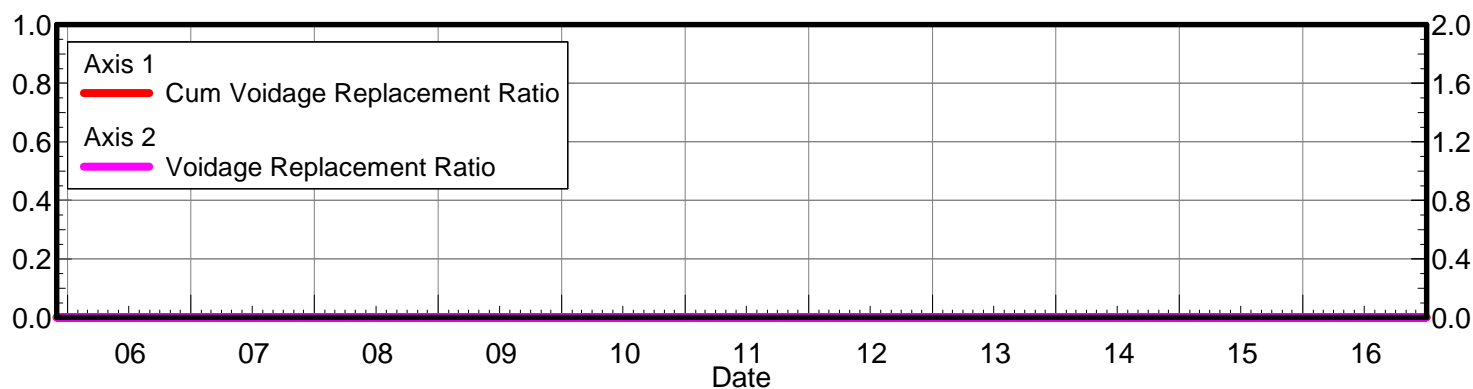
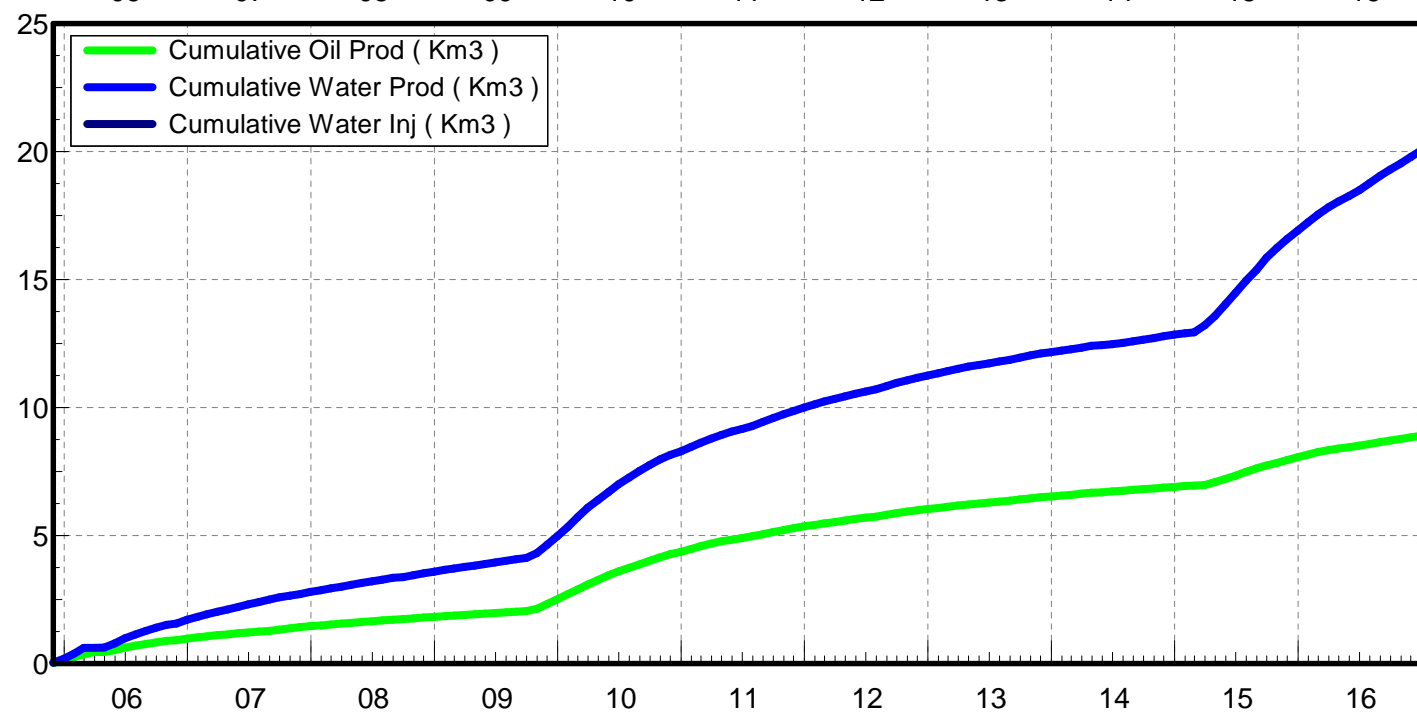
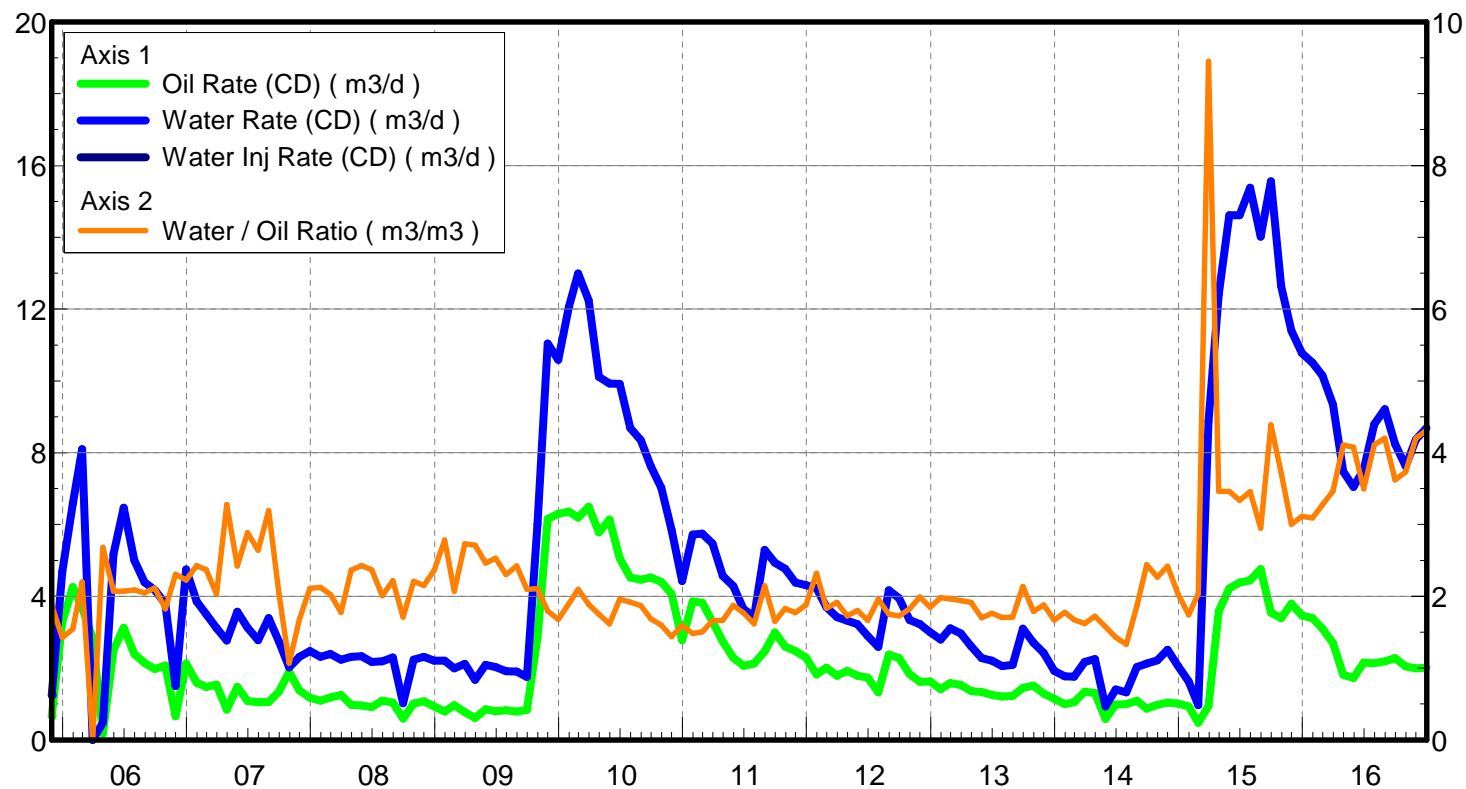
June 27, 2017

Operator: TUNDRA_OIL_&_GAS_LIMITED

Oil Rate (CD) : 2.02 m3/d

Water Rate (CD) : 8.76 m3/d

Water Inj Rate (CD) : * m3/d



Pattern: 02/09-27-007-29Inj Set: SinclairUnit#11

Oil Formation Vol Factor : 1.07100 m3/m3

Water Formation Vol Factor : 1.00150 m3/m3

Water / Oil Ratio : 5.03 m3/m3

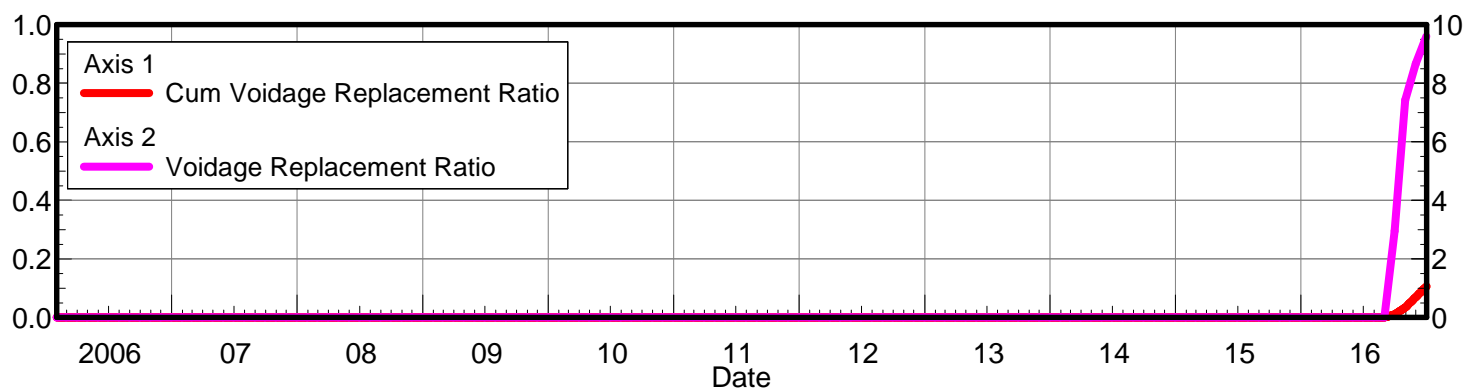
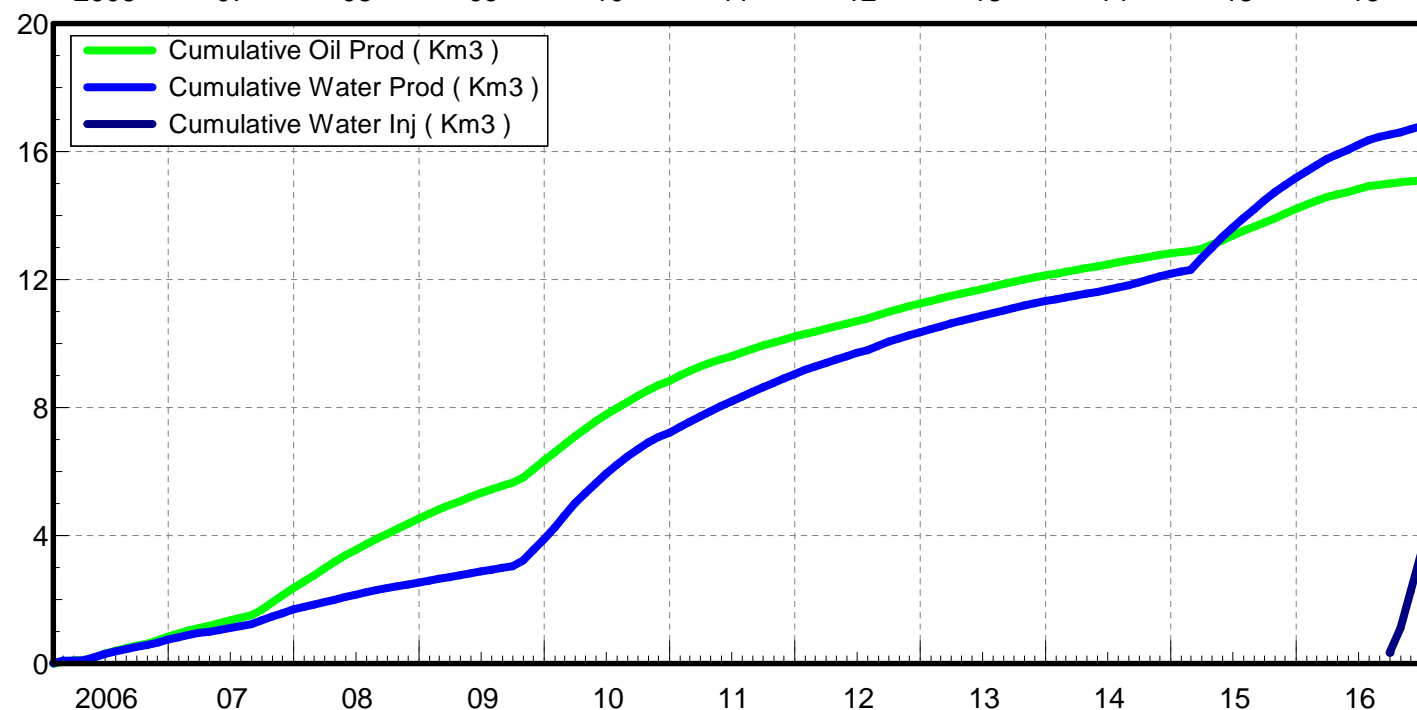
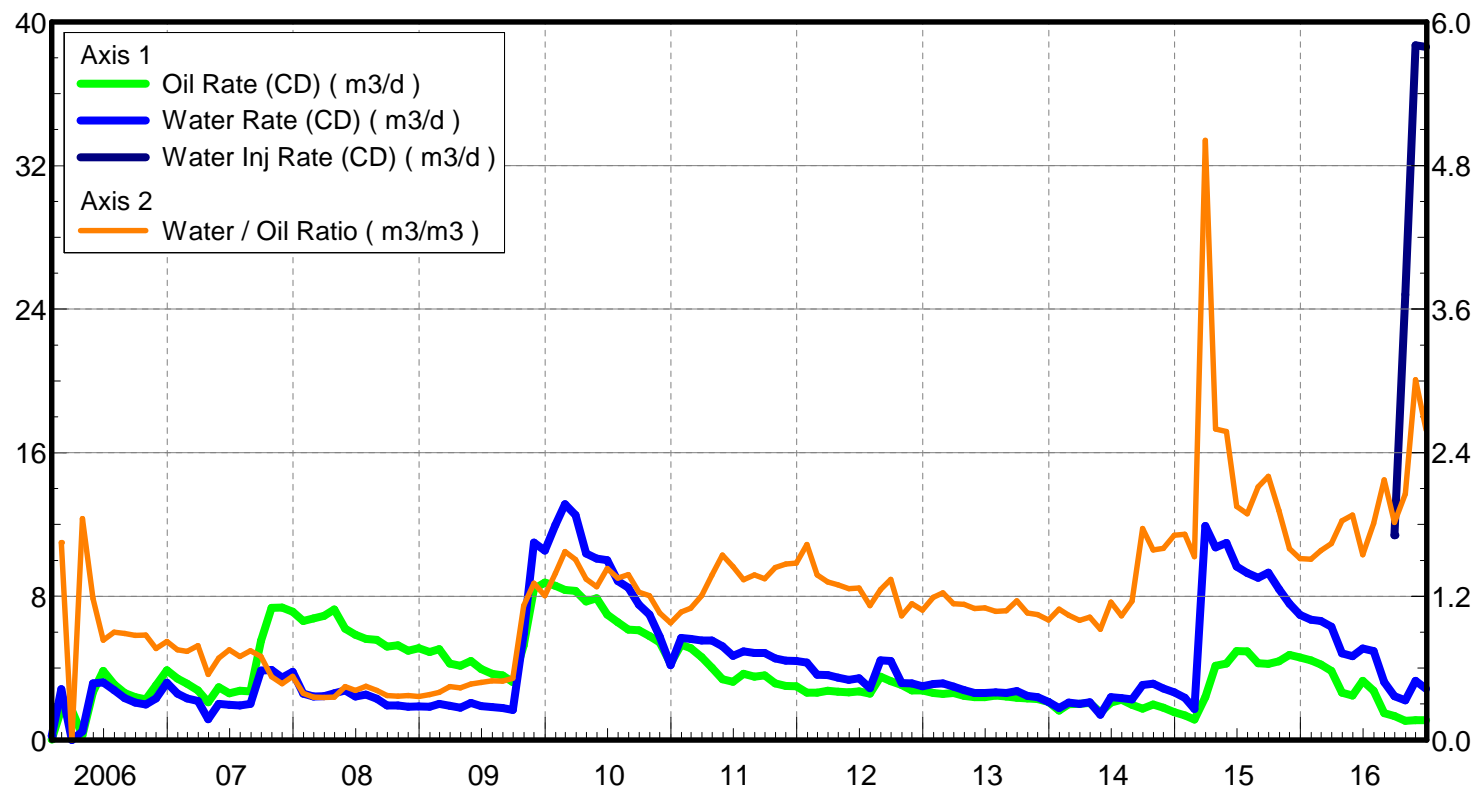
June 27, 2017

Operator: TUNDRA_OIL_&_GAS_LIMITED

Oil Rate (CD) : 0.88 m3/d

Water Rate (CD) : 3.53 m3/d

Water Inj Rate (CD) : 39.00 m3/d



Pattern: 02/16-34-007-29Inj Set: SinclairUnit#11

Oil Formation Vol Factor : 1.07100 m3/m3

Water Formation Vol Factor : 1.00150 m3/m3

Water / Oil Ratio : 1.07 m3/m3

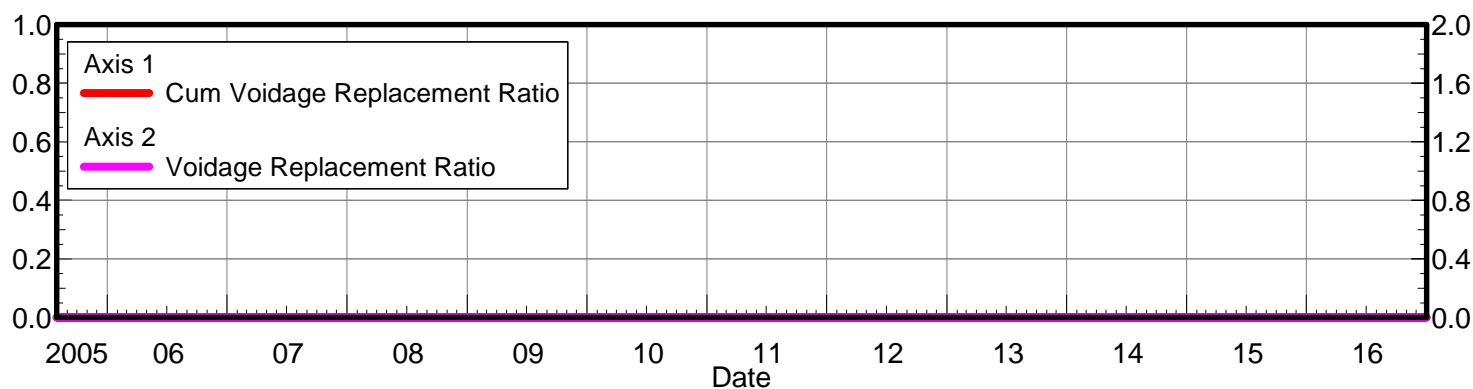
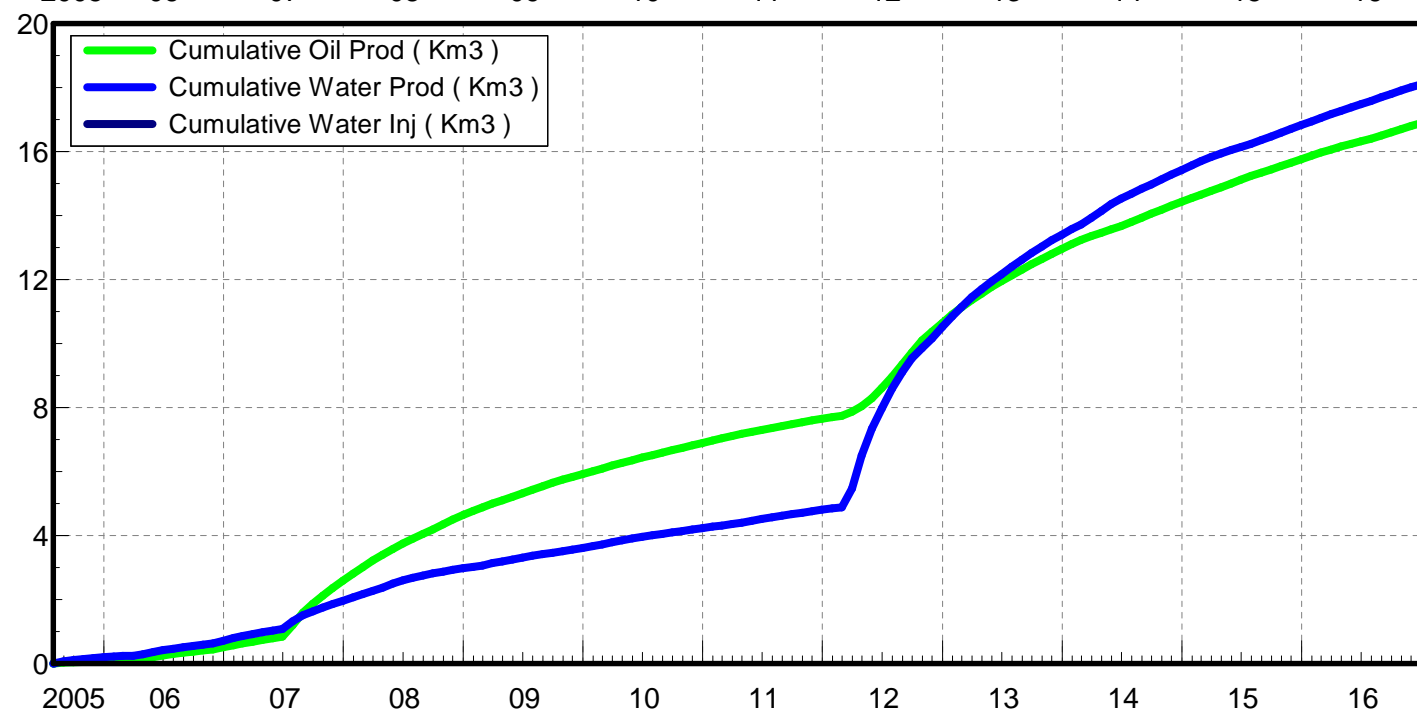
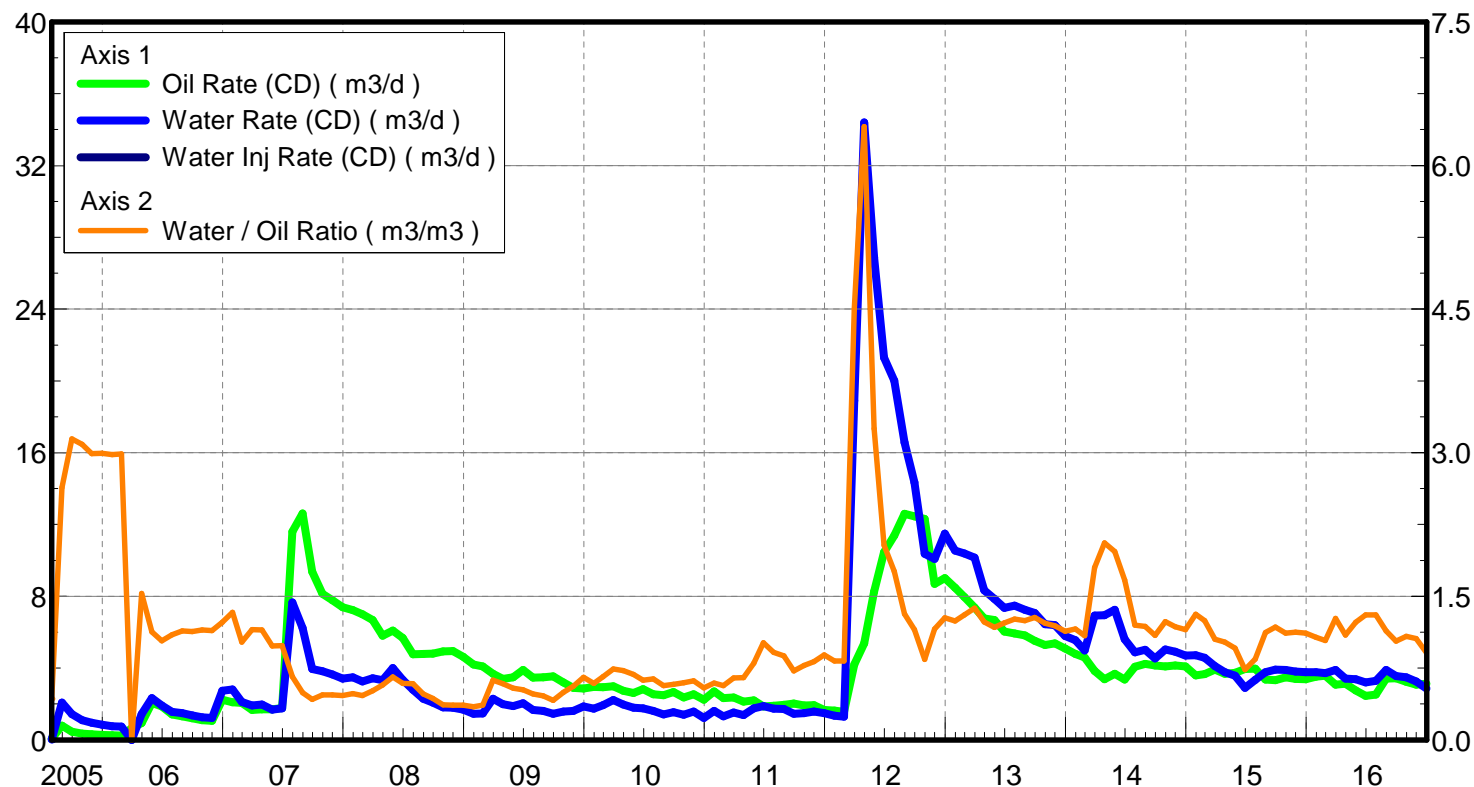
June 27, 2017

Operator: TUNDRA_OIL_&_GAS_LIMITED

Oil Rate (CD) : 3.15 m3/d

Water Rate (CD) : 3.02 m3/d

Water Inj Rate (CD) : * m3/d



Pattern: 02/04-35-007-29Inj Set: SinclairUnit#11

Oil Formation Vol Factor : 1.07100 m3/m3

Water Formation Vol Factor : 1.00150 m3/m3

Water / Oil Ratio : 3.02 m3/m3

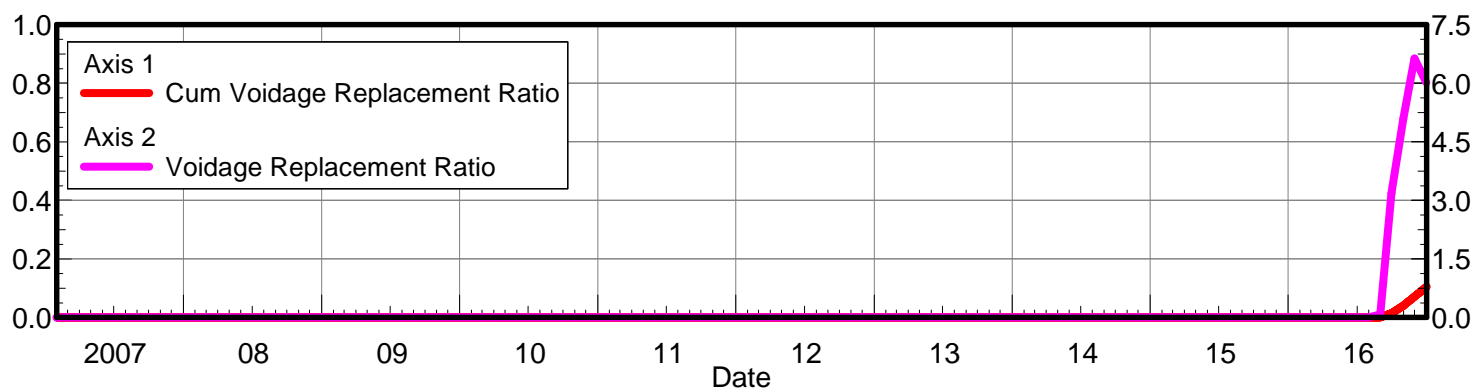
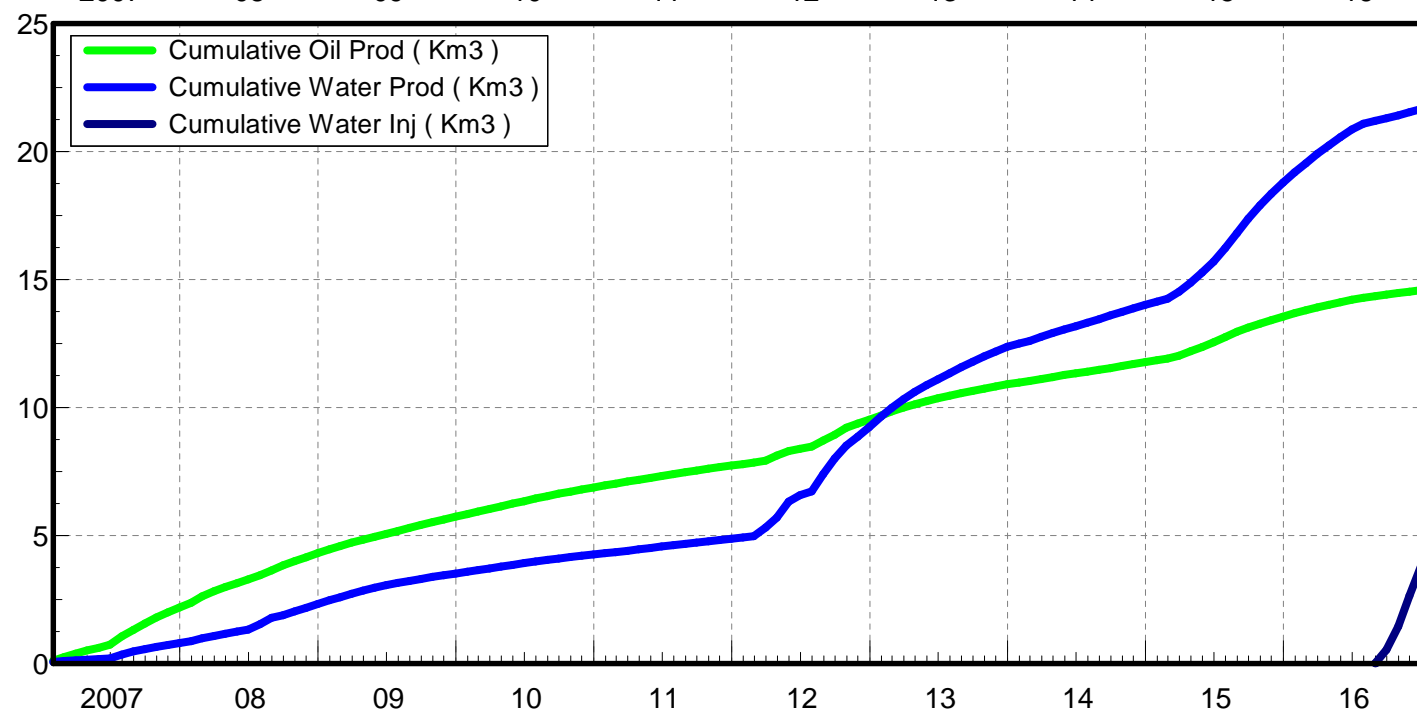
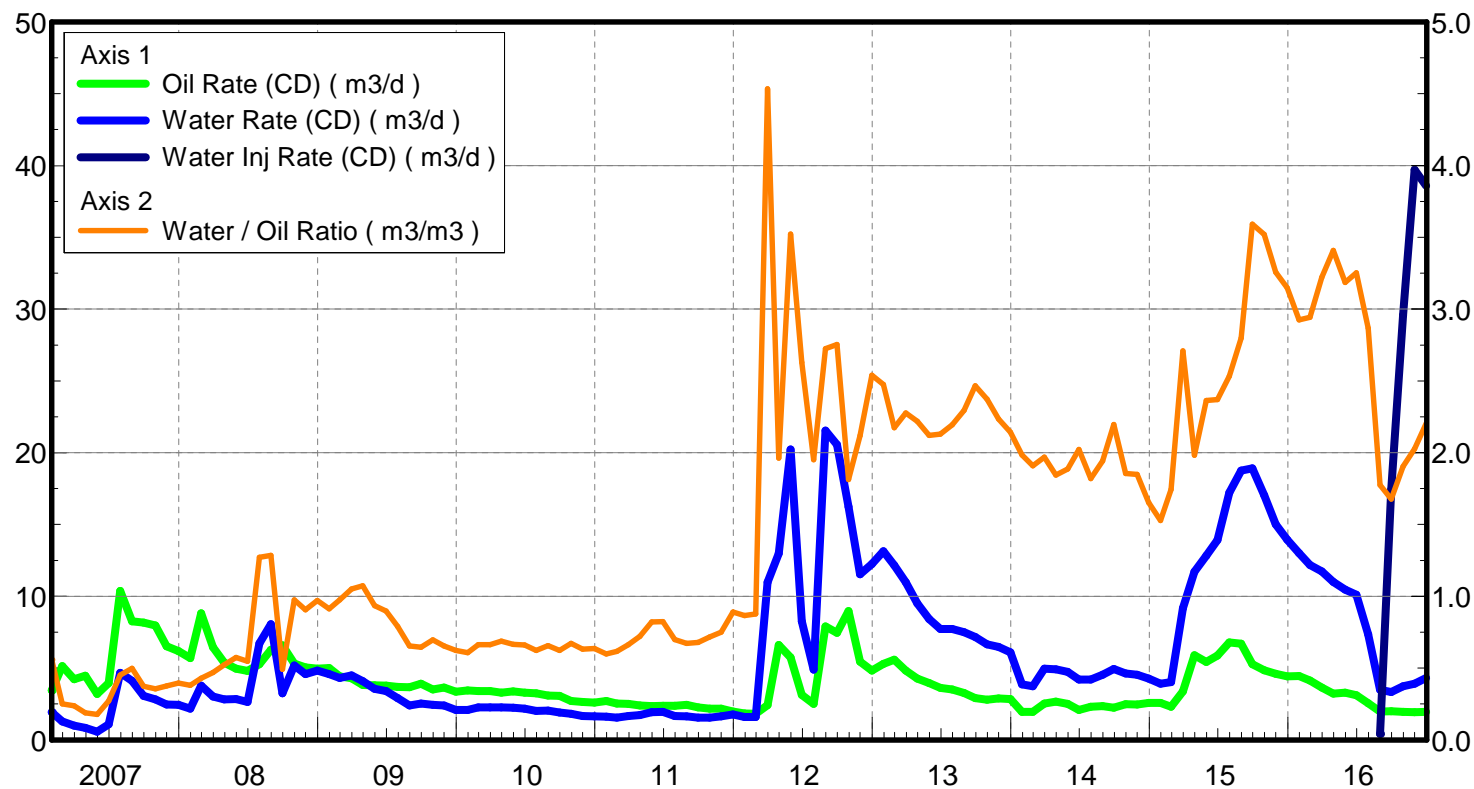
June 27, 2017

Operator: TUNDRA_OIL_&_GAS_LIMITED

Oil Rate (CD) : 1.92 m3/d

Water Rate (CD) : 5.54 m3/d

Water Inj Rate (CD) : 38.97 m3/d



Pattern: 02/13-35-007-29Inj Set: SinclairUnit#11

Oil Formation Vol Factor : 1.07100 m3/m3

Water Formation Vol Factor : 1.00150 m3/m3

Water / Oil Ratio : 0.95 m3/m3

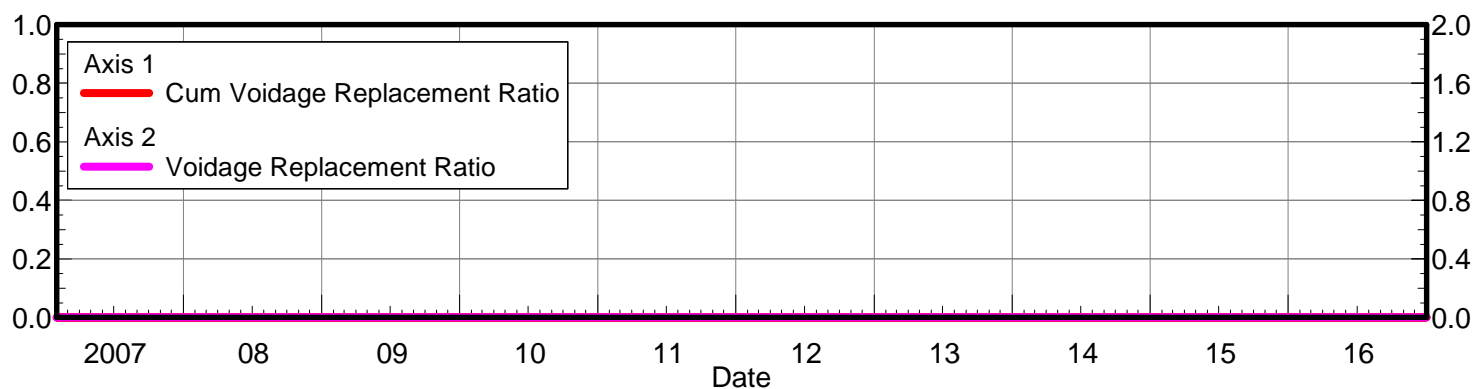
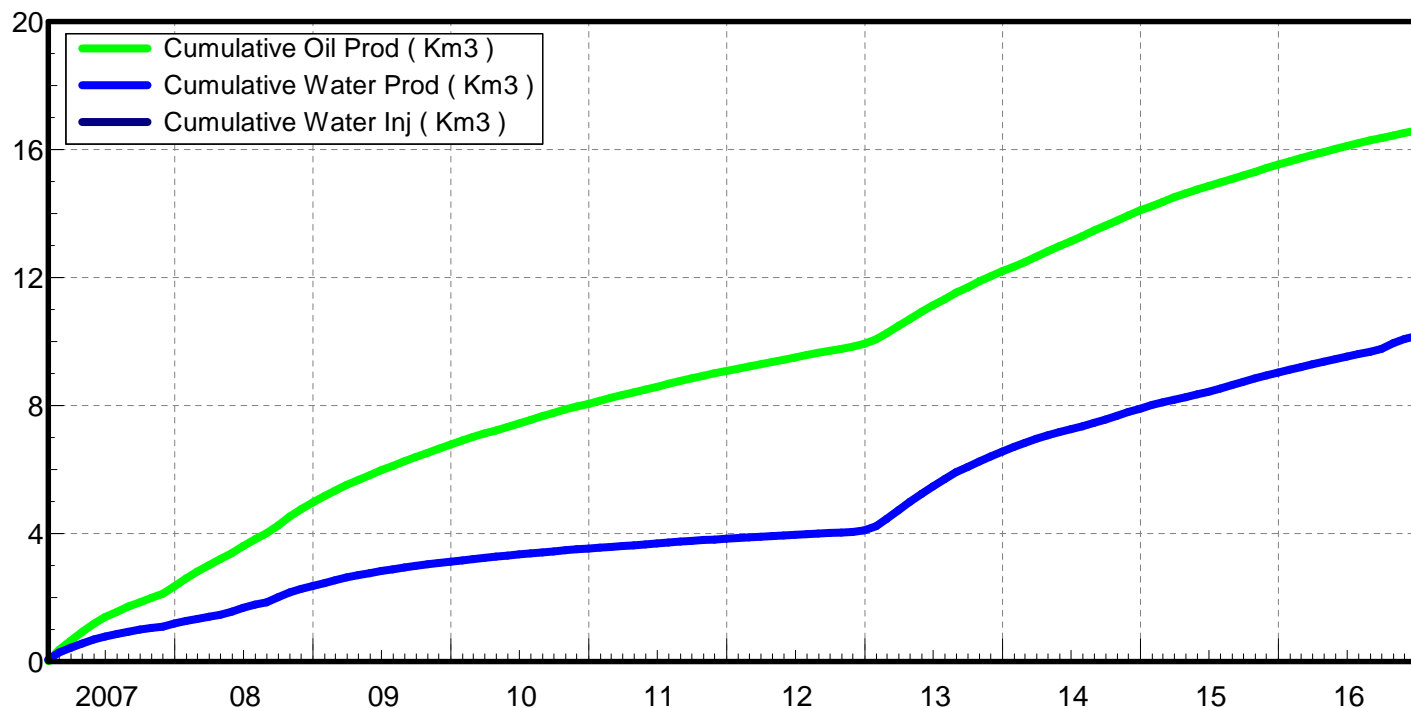
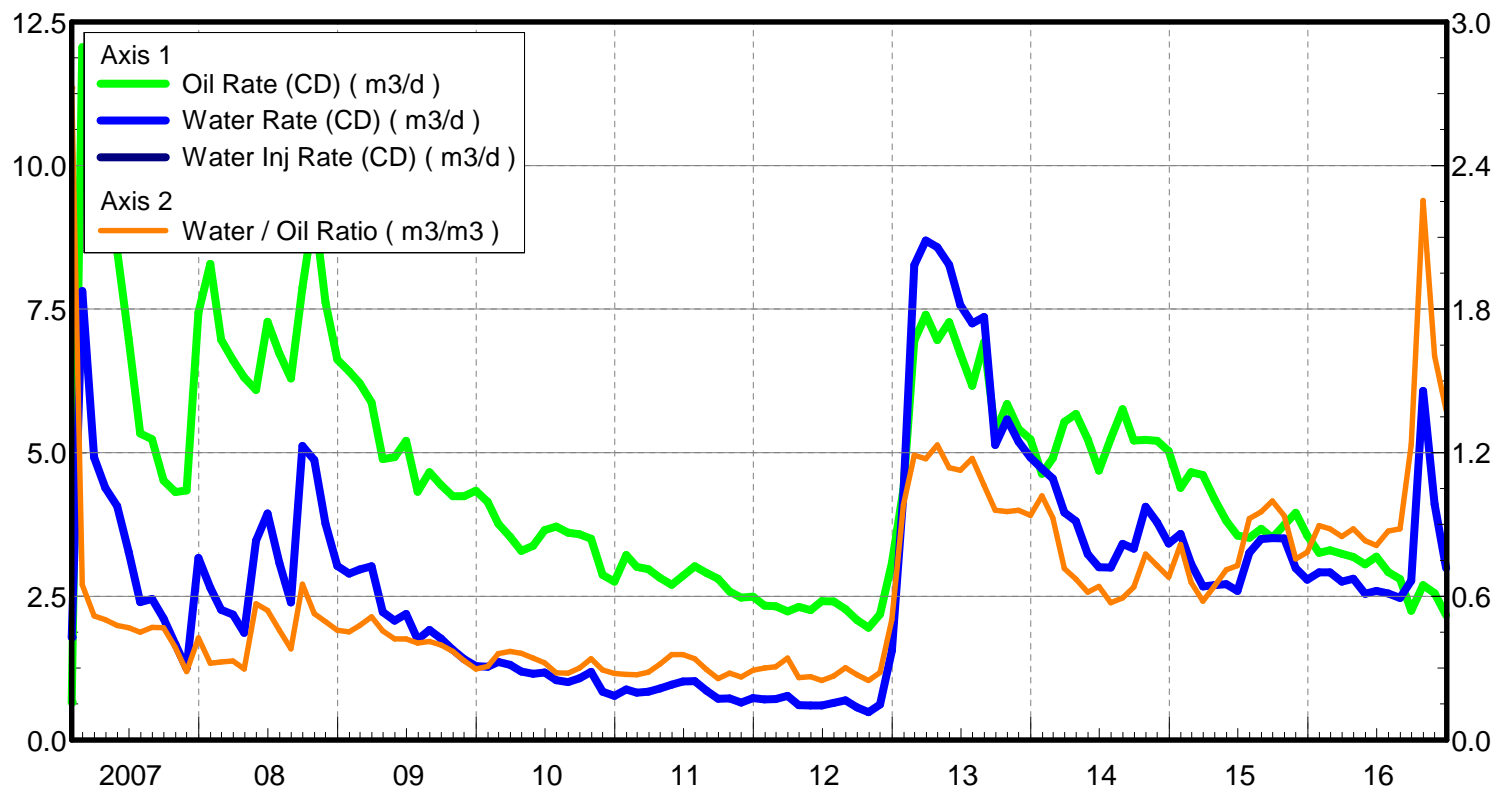
June 27, 2017

Operator: TUNDRA_OIL_&_GAS_LIMITED

Oil Rate (CD) : 2.89 m3/d

Water Rate (CD) : 2.78 m3/d

Water Inj Rate (CD) : * m3/d



Pattern: 02/16-36-007-29Inj Set: SinclairUnit#11

Oil Formation Vol Factor : 1.07100 m3/m3

Water Formation Vol Factor : 1.00150 m3/m3

Water / Oil Ratio : 0.70 m3/m3

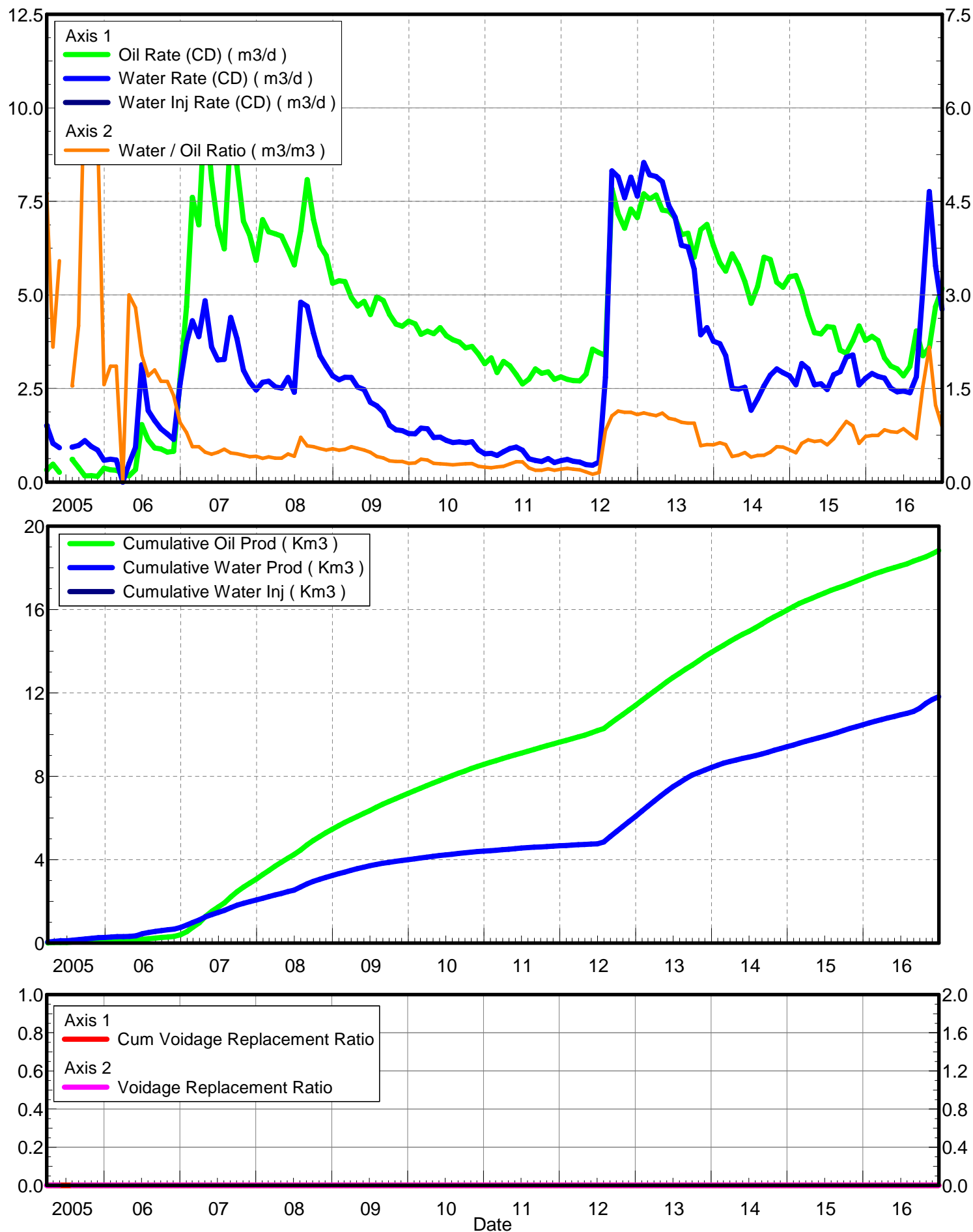
June 27, 2017

Operator: TUNDRA_OIL_&_GAS_LIMITED

Oil Rate (CD) : 5.69 m3/d

Water Rate (CD) : 4.23 m3/d

Water Inj Rate (CD) : * m3/d



Pattern: XX/11-26-007-29Inj Set: SinclairUnit#11

Oil Formation Vol Factor : 1.07100 m3/m3

Water Formation Vol Factor : 1.00150 m3/m3

Water / Oil Ratio : 0.25 m3/m3

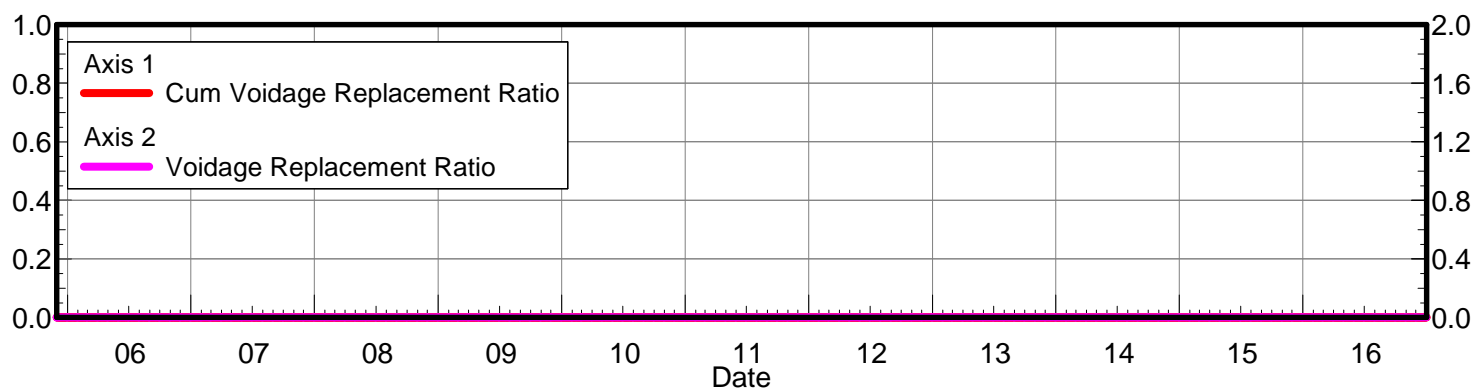
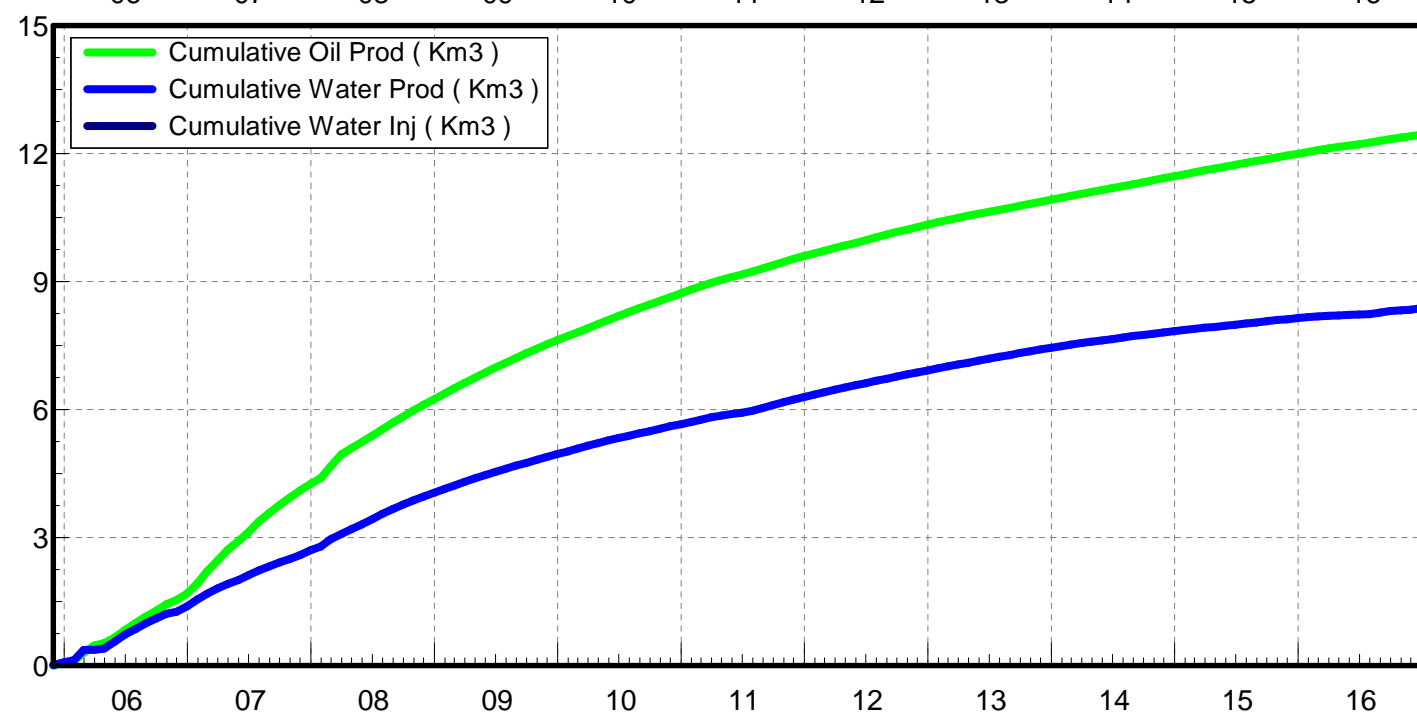
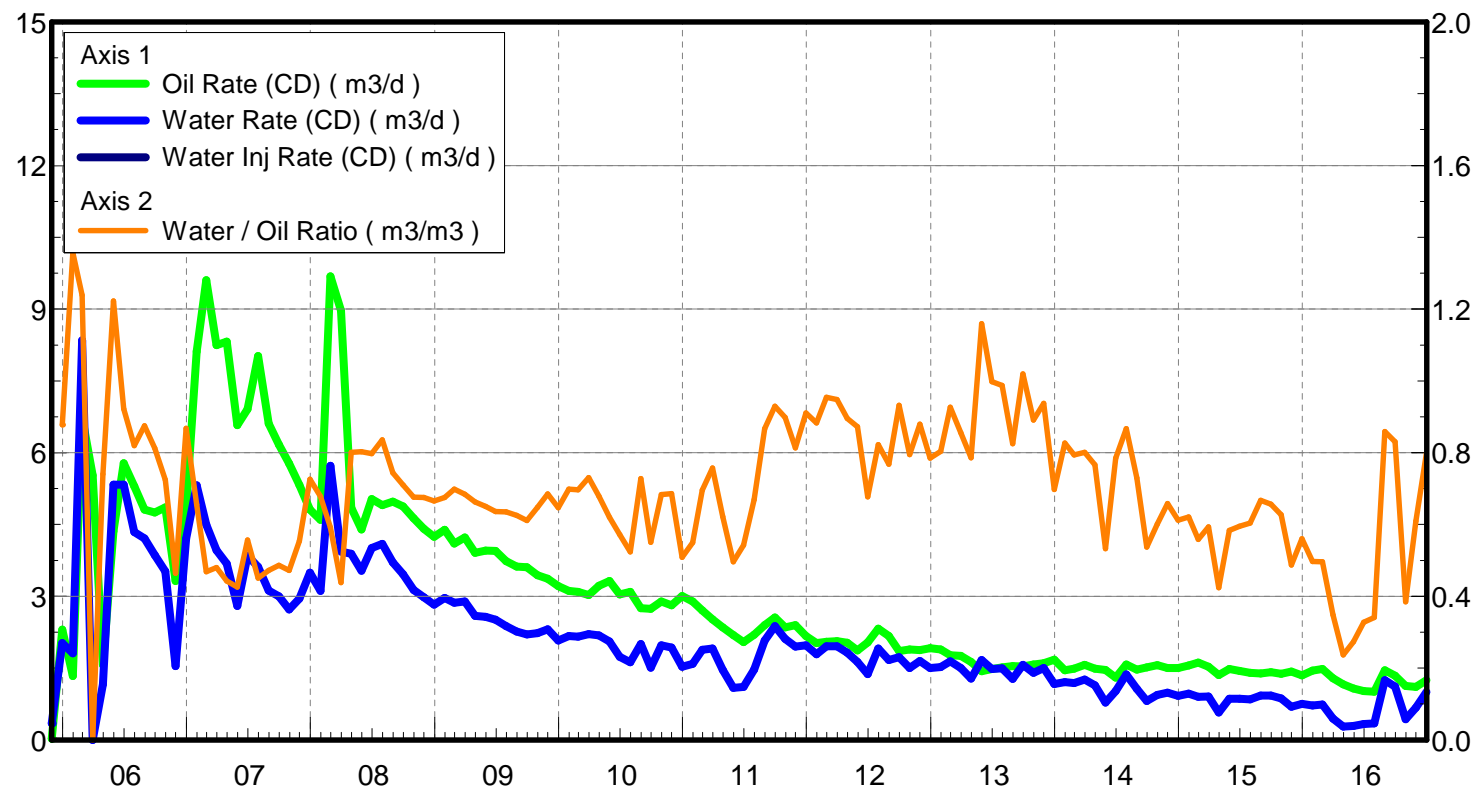
June 27, 2017

Operator: TUNDRA_OIL_&_GAS_LIMITED

Oil Rate (CD) : 1.17 m3/d

Water Rate (CD) : 0.55 m3/d

Water Inj Rate (CD) : * m3/d



Pattern: XX/13-26-007-29Inj Set: SinclairUnit#11

Oil Formation Vol Factor : 1.07100 m3/m3

Water Formation Vol Factor : 1.00150 m3/m3

Water / Oil Ratio : 0.67 m3/m3

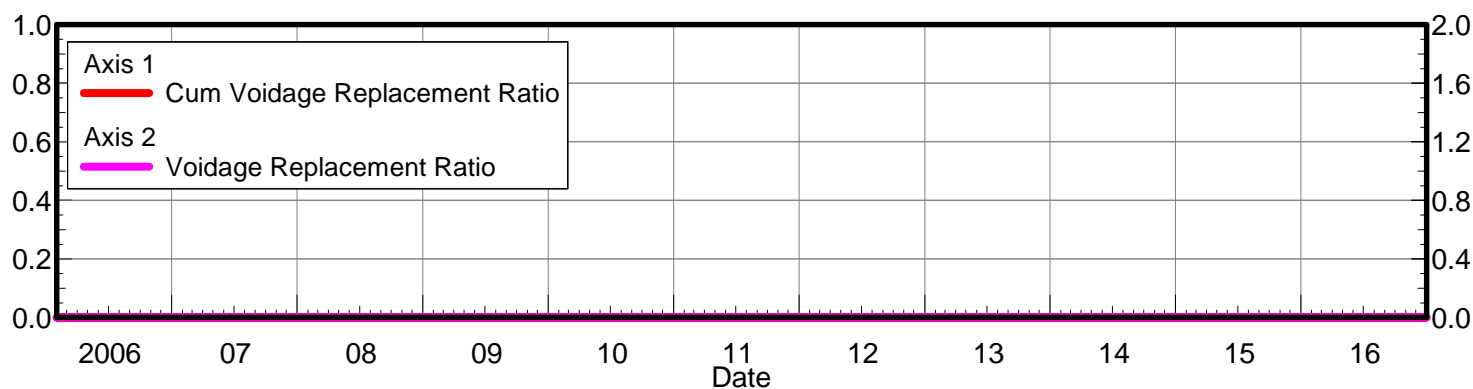
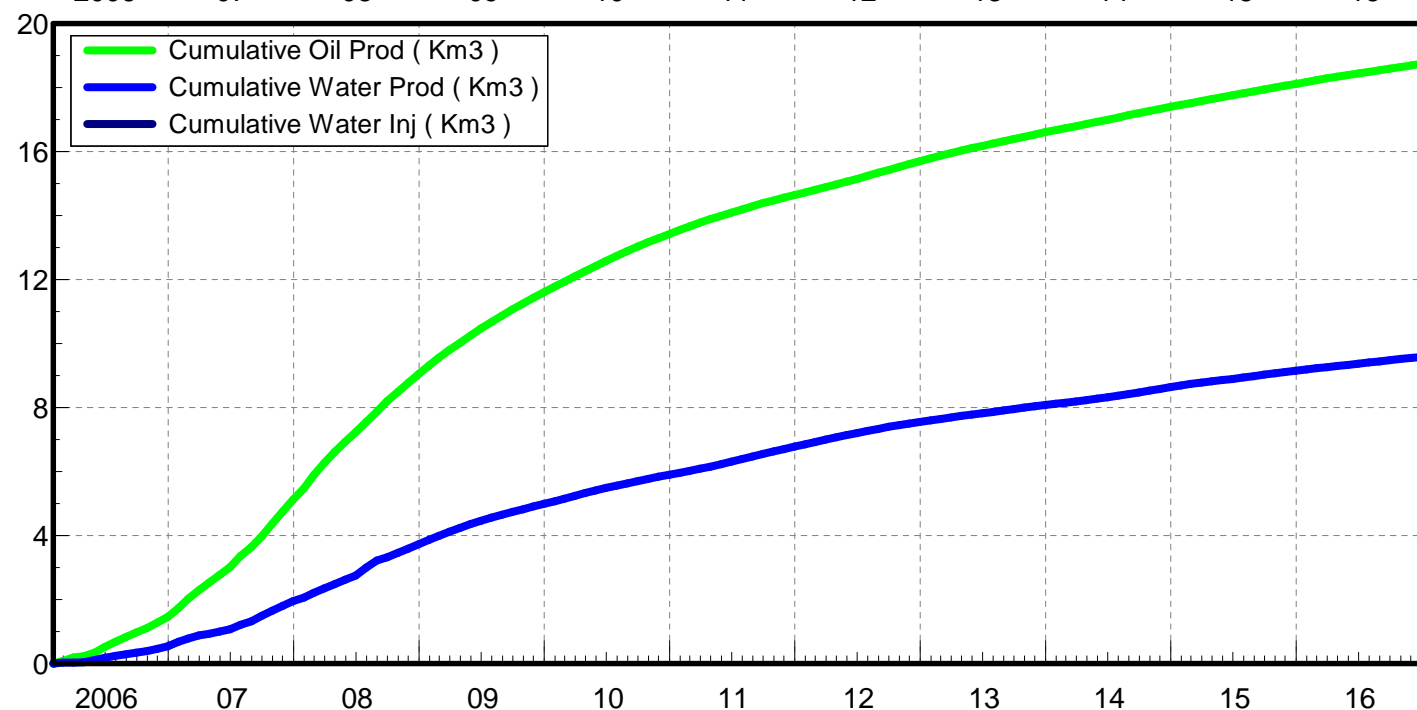
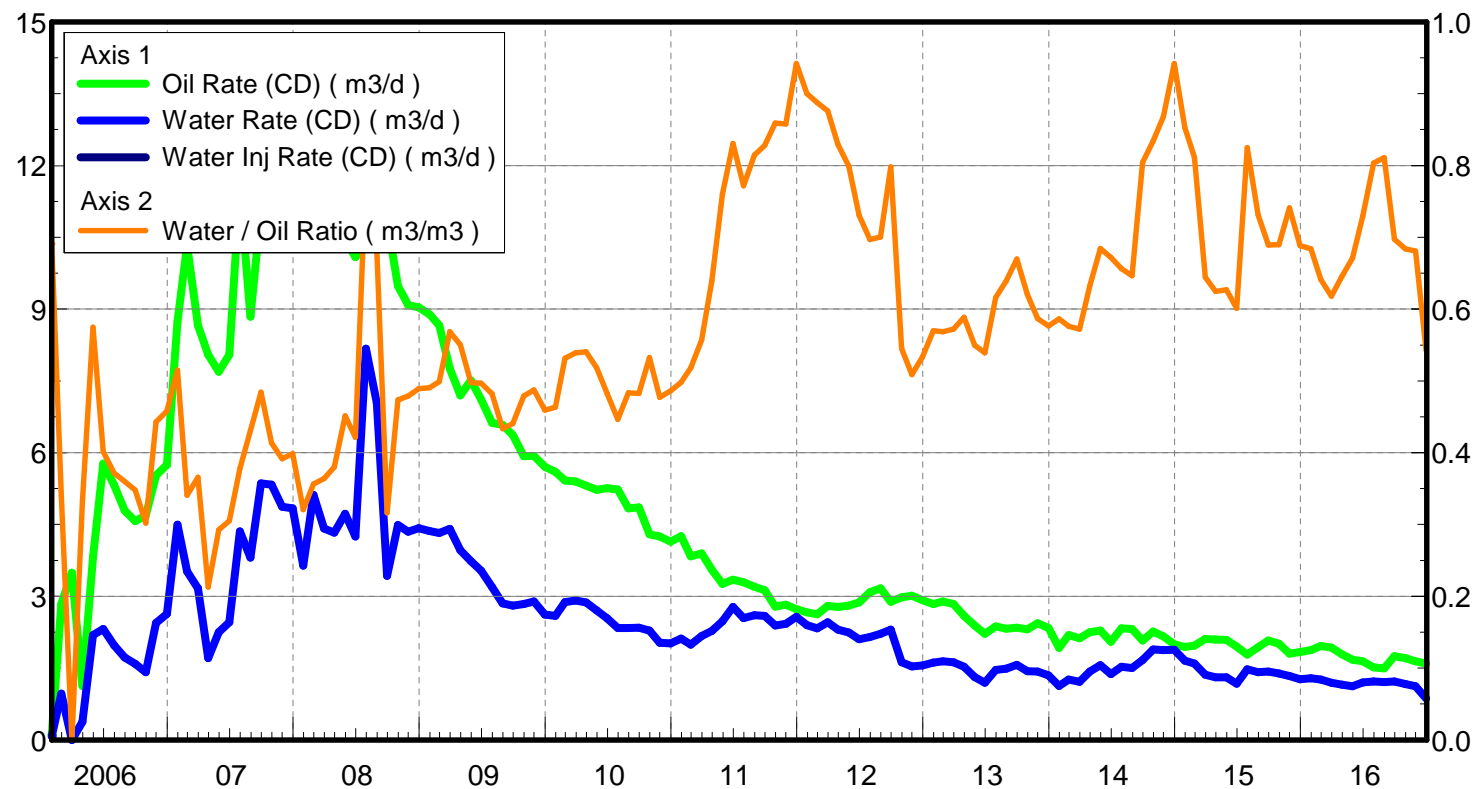
June 27, 2017

Operator: TUNDRA_OIL_&_GAS_LIMITED

Oil Rate (CD) : 1.78 m3/d

Water Rate (CD) : 1.03 m3/d

Water Inj Rate (CD) : * m3/d



Pattern: XX/12-34-007-29Inj Set: SinclairUnit#11

Oil Formation Vol Factor : 1.07100 m3/m3

Water Formation Vol Factor : 1.00150 m3/m3

Water / Oil Ratio : 1.97 m3/m3

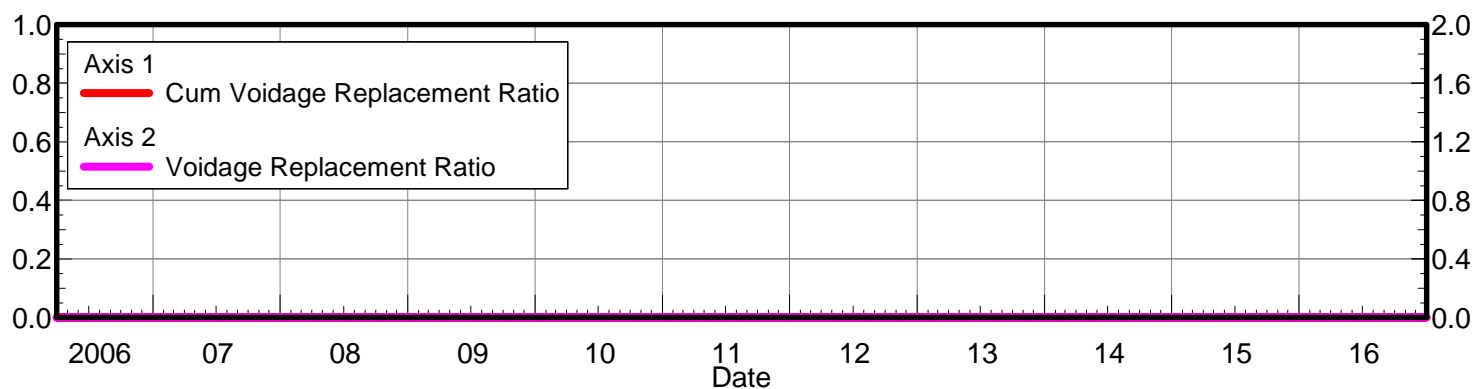
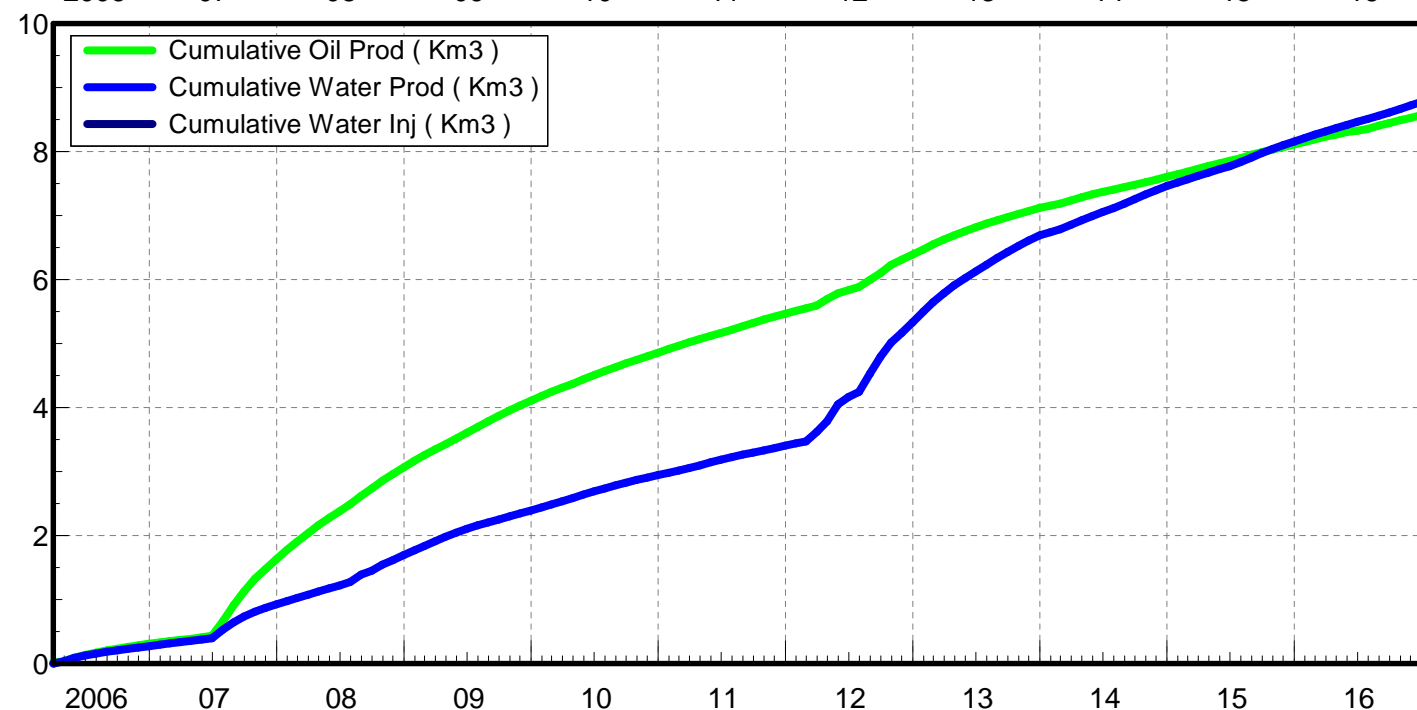
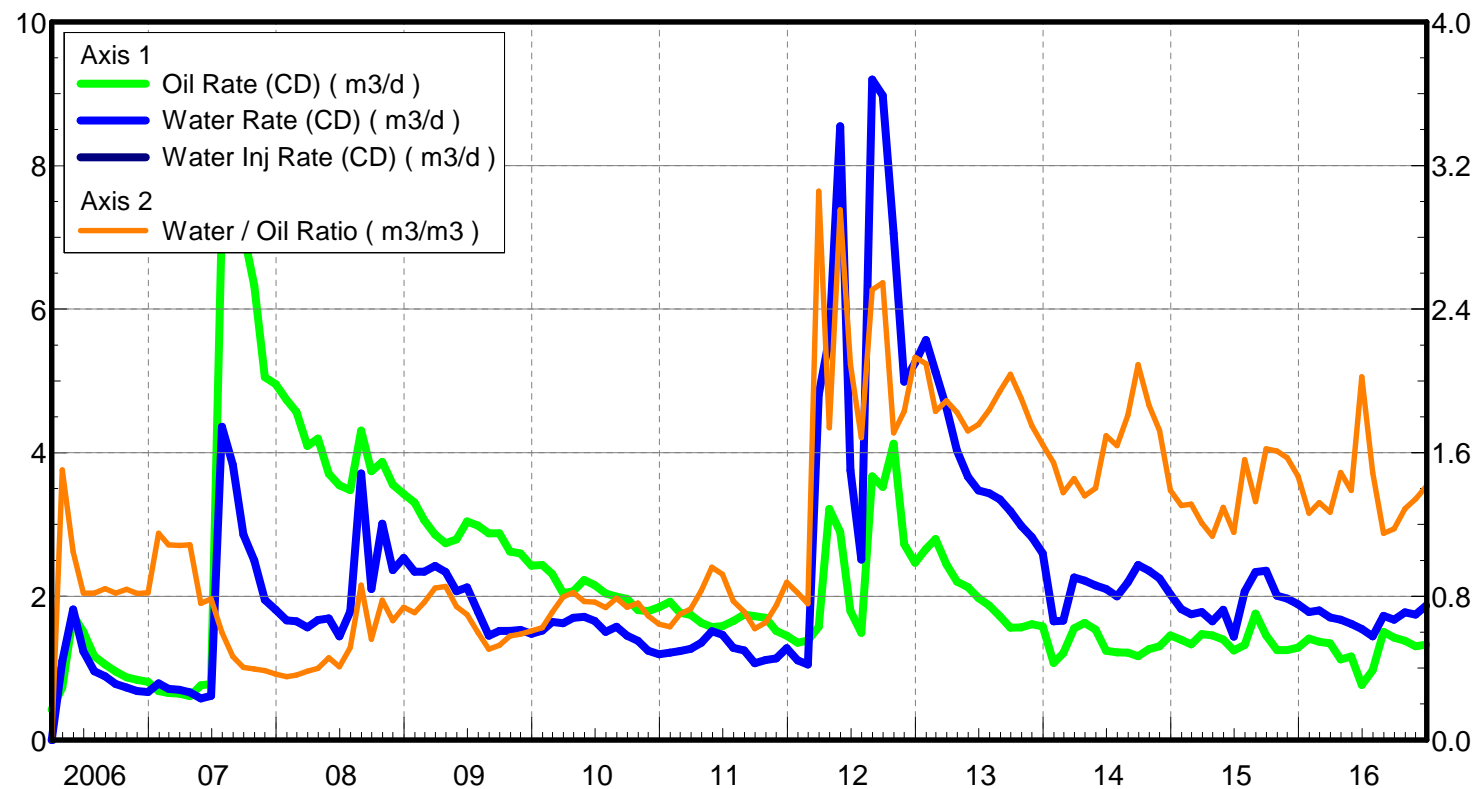
June 27, 2017

Operator: TUNDRA_OIL_&_GAS_LIMITED

Oil Rate (CD) : 1.35 m3/d

Water Rate (CD) : 2.40 m3/d

Water Inj Rate (CD) : * m3/d



Pattern: XX/11-35-007-29Inj Set: SinclairUnit#11

Oil Formation Vol Factor : 1.07100 m3/m3

Water Formation Vol Factor : 1.00150 m3/m3

Water / Oil Ratio : 4.45 m3/m3

June 27, 2017

Operator: TUNDRA_OIL_&_GAS_LIMITED

Oil Rate (CD) : 0.62 m3/d

Water Rate (CD) : 3.25 m3/d

Water Inj Rate (CD) : * m3/d

