

enerPLUS

Enerplus Commercial Trust
The Dome Tower
3000, 333 - 7th Ave. SW
Calgary, Alberta
Tel: 403.298.2200
Fax 403.298.2211
www.enerplus.com

22 July 2004

TO THE ADDRESSEES;

Re: Revisions to Exhibits A and B to Manitoba Units

According to the information in our files you are an owner in one or more of the following units in the Province of Manitoba, namely:

Virden Roselea Unit No.1
Virden Roselea Unit No.2
Virden Roselea Unit No.3
North Virden Scallion Unit No.1
Routledge Unit No.1
Daly Unit No.1
Daly Unit No.3

Under separate cover you should have received notice of the following changes affecting these units:

1. Change of name from Chevron Canada Resources (Western) to AE Canada Resources (Western).
2. Assignment of the entire interest of AE Canada Resources (Western) to Enerplus Commercial Trust and Acclaim Limited Partnership.

Enclosed for your records are revised Schedules A and B to the applicable unit agreements. The effective date of the above changes is August 1, 2004. Any future notices and correspondence should now be directed to:

Enerplus Commercial Trust
Attention: Anne Foster
3000, 333 - 7th Ave. SW
Calgary AB T2P 2Z1

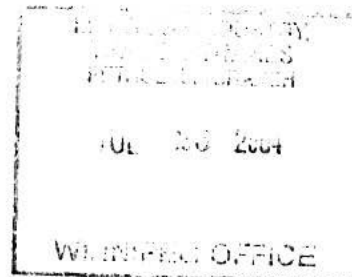
Acclaim Limited Partnership
Attn: Manager Jt. Interest & Land Admin
1900, 255 - 5th Ave. SW
Calgary AB T2P 3G6

If you have any questions please contact the undersigned at (403) 298-8924.

Yours truly,
ENERPLUS COMMERCIAL TRUST

Scott R Nalder
Land Consultant

Enclosure



VIRDEN-ROSELEA UNIT NO. 1

SCHEDULE "B"

**PRIMA FACIE WORKING INTEREST OWNERS AND THEIR FINAL
PARTICIPATING INTEREST IN THE VIRDEN-ROSELEA UNIT NO. 1**

<u>Working Interest Owner</u>	<u>Final Participating Interest (%)</u>
Enerplus Commercial Trust	51.76460800
Acclaim Limited Partnership	34.50973866
Gentry Resources Ltd.	9.955985600
Newmount Mining Corporation of Canada Limited	0.896487100
Frazier, C.M.	0.672713170
Tundra Oil and Gas Ltd.	1.719964870
K & N Oil Development Co. Ltd.	0.279600670
North West Exploration Company Ltd.	0.087818950
Shannon Oils Ltd.	0.059066940
Frontenac Petroleum Co. Ltd.	<u>0.054016040</u>
	<u>100.000000000</u>

The entire interest of Chevron Canada Resources (Western) was assigned to Enerplus Commercial Trust (60%) and Acclaim Limited Partnership (40%). Effective date August 1, 2004.

Revision: 18

VIRDEN-ROSELEA UNIT NO. 1

SCHEDULE "A"

**TRACT NUMBERS AND THE PRIMA FACIE WORKING INTEREST OWNERS
OF THE TRACTS IN THE VIRDEN-ROSELEA UNIT NO. 1**

<u>Tract Number</u>	<u>Working Interest Owner</u>	<u>Percentage Working Interest Ownership</u>
9A-19	Tundra Oil and Gas Ltd.	50
	Newmont Mining Corporation of Canada Limited	50
13-19	Tundra Oil and Gas Ltd.	50
	Newmont Mining Corporation of Canada Limited	50
16-19	Tundra Oil and Gas Ltd.	50
	Newmont Mining Corporation of Canada Limited	50
8-20	Enerplus Commercial Trust	60
	Acclaim Limited Partnership	40
9-20	Enerplus Commercial Trust	60
	Acclaim Limited Partnership	40
10-20	Enerplus Commercial Trust	60
	Acclaim Limited Partnership	40
11-20	Enerplus Commercial Trust	60
	Acclaim Limited Partnership	40
12-20	Enerplus Commercial Trust	60
	Acclaim Limited Partnership	40
13-20	Enerplus Commercial Trust	60
	Acclaim Limited Partnership	40
14-20	Enerplus Commercial Trust	60
	Acclaim Limited Partnership	40
15-20	Enerplus Commercial Trust	60
	Acclaim Limited Partnership	40

<u>Tract Number</u>	<u>Working Interest Owner</u>	<u>Percentage Working Interest Ownership</u>
16-20	Enerplus Commercial Trust	60
	Acclaim Limited Partnership	40
5-21	Enerplus Commercial Trust	58.5
	Acclaim Limited Partnership	39.0
	Frontenac Petroleum Co. Ltd.	2.5
6-21	Enerplus Commercial Trust	58.92
	Acclaim Limited Partnership	39.28
	Frontenac Petroleum Co. Ltd.	1.8
7-21	Enerplus Commercial Trust	58.68
	Acclaim Limited Partnership	39.12
	Frontenac Petroleum Co. Ltd.	2.2
10-21	Enerplus Commercial Trust	58.92
	Acclaim Limited Partnership	39.28
	Frontenac Petroleum Co. Ltd.	1.8
11-21	Enerplus Commercial Trust	60
	Acclaim Limited Partnership	40
12-21	Enerplus Commercial Trust	60
	Acclaim Limited Partnership	40
13-21	Enerplus Commercial Trust	60
	Acclaim Limited Partnership	40
14-21	Enerplus Commercial Trust	60
	Acclaim Limited Partnership	40
15-21	Enerplus Commercial Trust	59.1
	Acclaim Limited Partnership	39.4
	Frontenac Petroleum Co. Ltd.	1.5
2-28	Enerplus Commercial Trust	60
	Acclaim Limited Partnership	40
3-28	Enerplus Commercial Trust	60
	Acclaim Limited Partnership	40

<u>Tract Number</u>	<u>Working Interest Owner</u>	<u>Percentage Working Interest Ownership</u>
4-28	Enerplus Commercial Trust Acclaim Limited Partnership	60 40
5-28	Enerplus Commercial Trust Acclaim Limited Partnership	60 40
1-29	Enerplus Commercial Trust Acclaim Limited Partnership	60 40
2-29	Enerplus Commercial Trust Acclaim Limited Partnership	60 40
3-29	Enerplus Commercial Trust Acclaim Limited Partnership	60 40
4-29	Enerplus Commercial Trust Acclaim Limited Partnership	60 40
5-29	Enerplus Commercial Trust Acclaim Limited Partnership	60 40
6-29	Enerplus Commercial Trust Acclaim Limited Partnership	60 40
7-29	Enerplus Commercial Trust Acclaim Limited Partnership	60 40
8-29	Enerplus Commercial Trust Acclaim Limited Partnership	60 40
10-29	Enerplus Commercial Trust Acclaim Limited Partnership	60 40
11-29	Enerplus Commercial Trust Acclaim Limited Partnership	60 40
12-29	Enerplus Commercial Trust Acclaim Limited Partnership	60 40
1-30	Enerplus Commercial Trust Acclaim Limited Partnership	60 40

<u>Tract Number</u>	<u>Working Interest Owner</u>	<u>Percentage Working Interest Ownership</u>
2-30	Enerplus Commercial Trust	60
	Acclaim Limited Partnership	40
3-30	Enerplus Commercial Trust	60
	Acclaim Limited Partnership	40
4-30	Enerplus Commercial Trust	60
	Acclaim Limited Partnership	40
5-30	Enerplus Commercial Trust	60
	Acclaim Limited Partnership	40
6-30	Enerplus Commercial Trust	60
	Acclaim Limited Partnership	40
7-30	Enerplus Commercial Trust	60
	Acclaim Limited Partnership	40
8-30	Enerplus Commercial Trust	60
	Acclaim Limited Partnership	40
9-30	Enerplus Commercial Trust	60
	Acclaim Limited Partnership	40
10-30	Enerplus Commercial Trust	60
	Acclaim Limited Partnership	40
11-30	Enerplus Commercial Trust	60
	Acclaim Limited Partnership	40
12-30	Enerplus Commercial Trust	60
	Acclaim Limited Partnership	40
15-30	Enerplus Commercial Trust	60
	Acclaim Limited Partnership	40
9-23	Gentry Resources Ltd.	73.5
	Enerplus Commercial Trust	15.0
	Acclaim Limited Partnership	10.0
	North West Exploration Company Ltd.	1.5

<u>Tract Number</u>	<u>Working Interest Owner</u>	<u>Percentage Working Interest Ownership</u>
10-23	Gentry Resources Ltd.	73.5
	Enerplus Commercial Trust	15.0
	Acclaim Limited Partnership	10.0
	North West Exploration Company Ltd.	1.5
11-23	Gentry Resources Ltd.	73.5
	Frazier, C.M.	25.0
	North West Exploration Company Ltd.	1.5
12-23	Gentry Resources Ltd.	100
13-23	Gentry Resources Ltd.	73.5
	Frazier, C.M.	25.0
	North West Exploration Company Ltd.	1.5
14-23	Gentry Resources Ltd.	73.5
	Frazier, C.M.	25.0
	North West Exploration Company Ltd.	1.5
15-23	Gentry Resources Ltd.	73.5
	Enerplus Commercial Trust	15.0
	Acclaim Limited Partnership	10.0
	North West Exploration Company Ltd.	1.5
16-23	Gentry Resources Ltd.	100
9-24	Enerplus Commercial Trust	60
	Acclaim Limited Partnership	40
10-24	Enerplus Commercial Trust	60
	Acclaim Limited Partnership	40
11-24	Enerplus Commercial Trust	60
	Acclaim Limited Partnership	40
12-24	Enerplus Commercial Trust	60
	Acclaim Limited Partnership	40
13-24	Enerplus Commercial Trust	60
	Acclaim Limited Partnership	40

<u>Tract Number</u>	<u>Working Interest Owner</u>	<u>Percentage Working Interest Ownership</u>
14-24	Enerplus Commercial Trust	60
	Acclaim Limited Partnership	40
15-24	Enerplus Commercial Trust	60
	Acclaim Limited Partnership	40
16-24	Enerplus Commercial Trust	60
	Acclaim Limited Partnership	40
1-25	Enerplus Commercial Trust	60
	Acclaim Limited Partnership	40
2-25	Enerplus Commercial Trust	60
	Acclaim Limited Partnership	40
3-25	Enerplus Commercial Trust	60
	Acclaim Limited Partnership	40
4-25	Enerplus Commercial Trust	60
	Acclaim Limited Partnership	40
5-25	Enerplus Commercial Trust	60
	Acclaim Limited Partnership	40
6-25	Enerplus Commercial Trust	60
	Acclaim Limited Partnership	40
7-25	Enerplus Commercial Trust	60
	Acclaim Limited Partnership	40
8-25	Enerplus Commercial Trust	60
	Acclaim Limited Partnership	40
9-25	Enerplus Commercial Trust	60
	Acclaim Limited Partnership	40
10-25	Enerplus Commercial Trust	60
	Acclaim Limited Partnership	40
11-25	Enerplus Commercial Trust	60
	Acclaim Limited Partnership	40

<u>Tract Number</u>	<u>Working Interest Owner</u>	<u>Percentage Working Interest Ownership</u>
12-25	Enerplus Commercial Trust	60
	Acclaim Limited Partnership	40
13-25	Enerplus Commercial Trust	60
	Acclaim Limited Partnership	40
14-25	Enerplus Commercial Trust	60
	Acclaim Limited Partnership	40
15-25	Enerplus Commercial Trust	60
	Acclaim Limited Partnership	40
16-25	Enerplus Commercial Trust	60
	Acclaim Limited Partnership	40
1-26	Enerplus Commercial Trust	60
	Acclaim Limited Partnership	40
3-26	Enerplus Commercial Trust	60
	Acclaim Limited Partnership	40
4-26	Enerplus Commercial Trust	60
	Acclaim Limited Partnership	40
6-26	Enerplus Commercial Trust	60
	Acclaim Limited Partnership	40
7-26	Enerplus Commercial Trust	60
	Acclaim Limited Partnership	40
8-26	Enerplus Commercial Trust	60
	Acclaim Limited Partnership	40
9-26	Tundra Oil and Gas Ltd.	40
	Enerplus Commercial Trust	36
	Acclaim Limited Partnership	24
10-26	Tundra Oil and Gas Ltd.	40
	Enerplus Commercial Trust	36
	Acclaim Limited Partnership	24

<u>Tract Number</u>	<u>Working Interest Owner</u>	<u>Percentage Working Interest Ownership</u>
15-26	Tundra Oil and Gas Ltd.	40
	Enerplus Commercial Trust	36
	Acclaim Limited Partnership	24
16-26	Tundra Oil and Gas Ltd.	40
	Enerplus Commercial Trust	36
	Acclaim Limited Partnership	24
1-36	K & N Oil Development Co. Ltd.	100
2-36	Shannon Oils Ltd.	100