

TORC OIL & GAS LTD.

WASKADA UNIT NO. 15

ENHANCED OIL RECOVERY (EOR) ANNUAL REPORT

Discussion:

Waterflood injection on Waskada Unit #15 was fully suspended in late 2013 due to premature water breakthrough in offsetting producers.

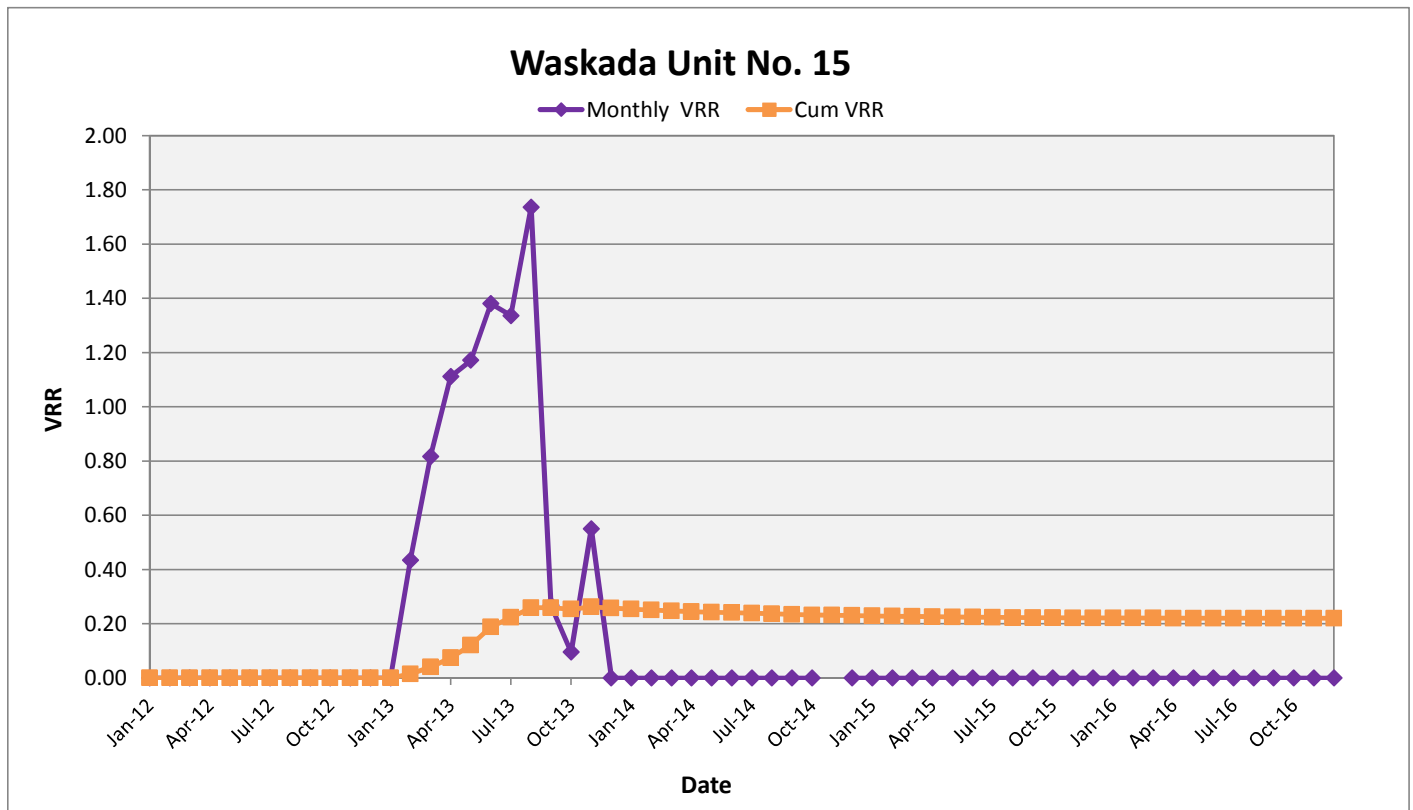
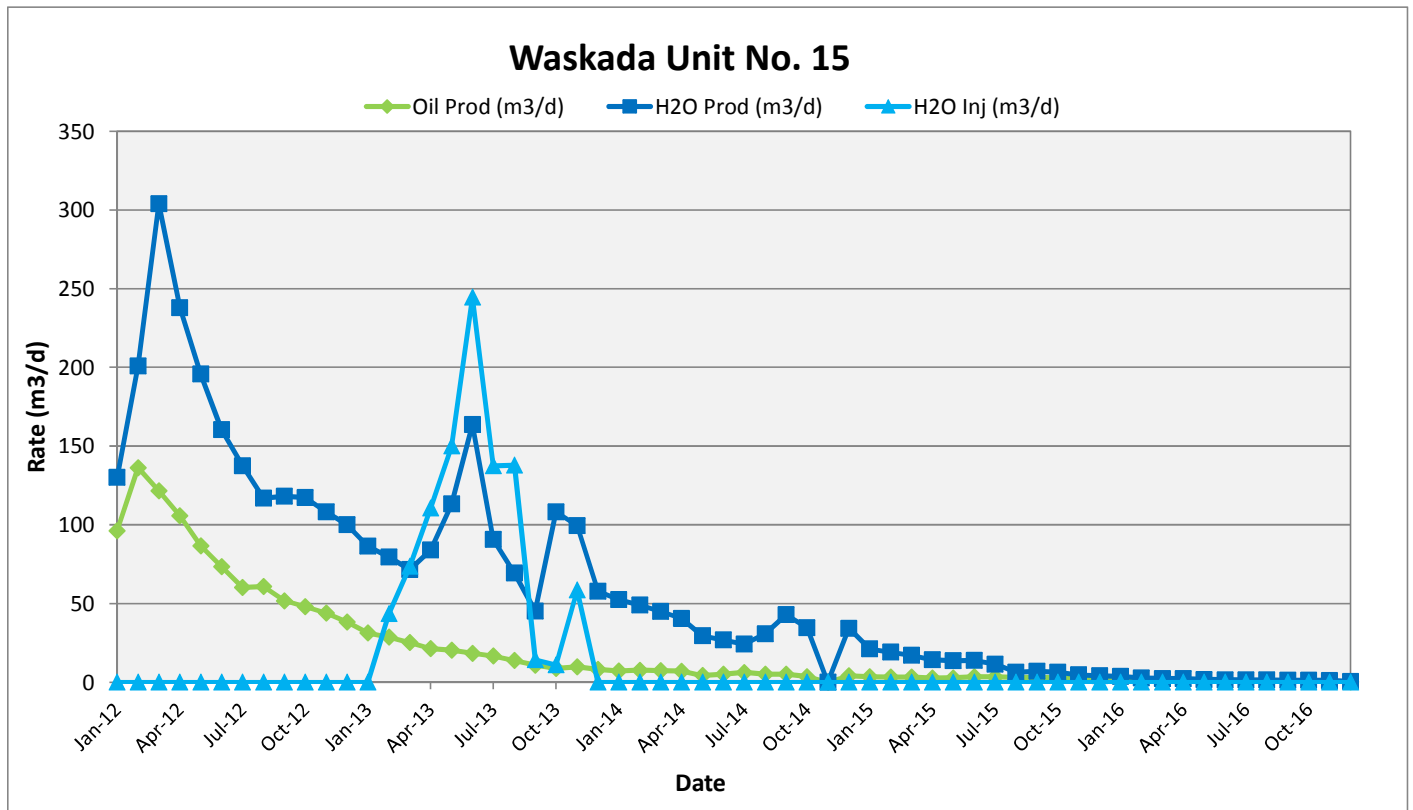
There were no water volumes injected in Waskada Unit #15 in 2016.

In 2016, TORC began to suspend production wells in Waskada Unit #15 due to high operating costs / weak economics. These efforts are projected to continue through 2017 coupled with the pursuit of strategic business alternatives for the Waskada asset.

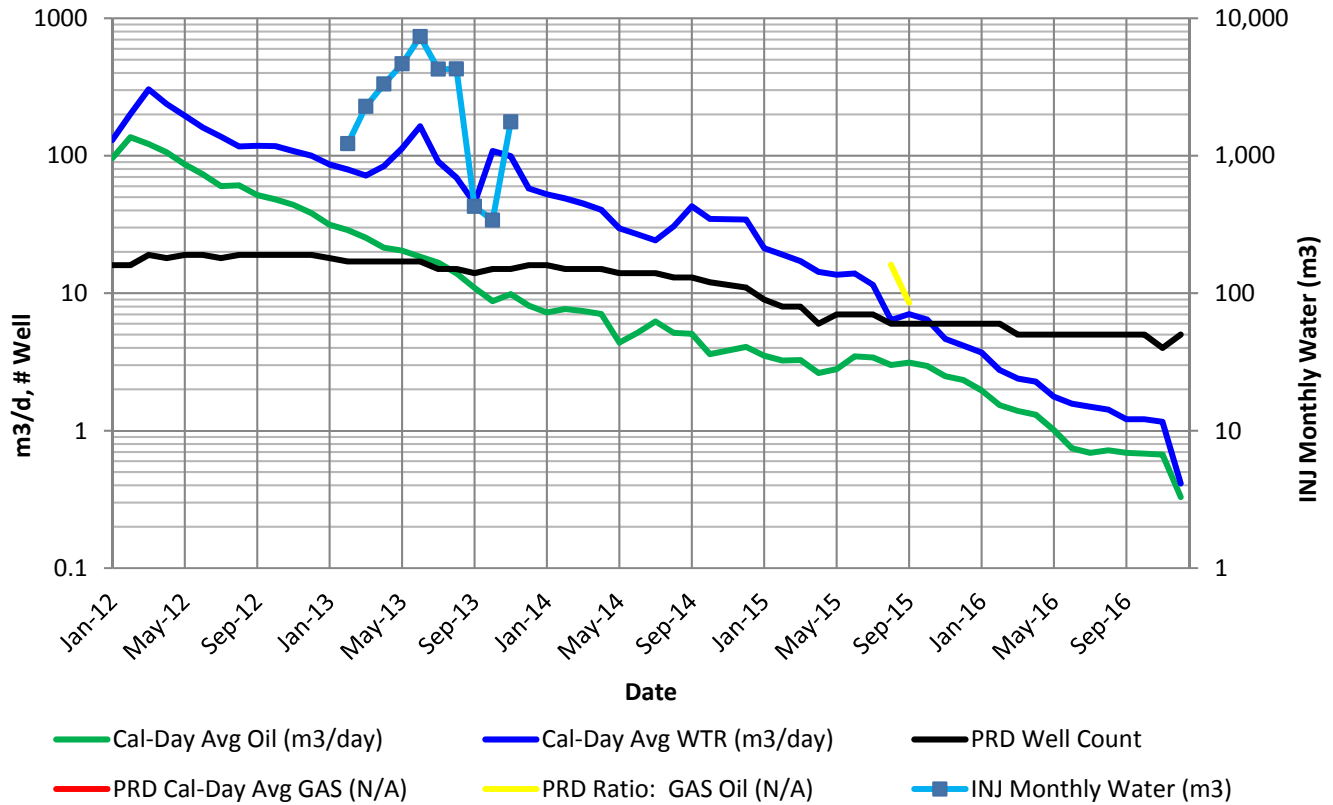
Waskada Unit No. 15 - VRR Table																										
Month	Days	Monthly Oil Prod (bbl)	Monthly Oil Prod (m3)	Monthly Gas Prod (E3m3)	Monthly H2O Prod (bbl)	Monthly H2O Prod (m3)	Monthly H2O Inj (bbl)	Monthly H2O Inj (m3)	Oil Prod (m3/d)	Gas Prod (E3m3/d)	H2O Prod (m3/d)	H2O Inj (m3/d)	Cum Oil (bbl)	Cum Oil (m3)	Cum Gas (E3m3)	Cum H2O (m3)	Cum H2O Inj (m3)	Prod Well Count	GOR (m3/m3)	H2OCut %	Voidage (rm3/d)	Monthly VRR	Cum GOR (m3/m3)	H2OCut %	Cum Void (rm3)	Cum VRR
Jan-12	31	18,748	2,980.7	0	25,385	4,035.7	0	0	96	0	130	0	18,748	2981	0	4036	0	16	0	57.5%	201	0.00	0.0	57.5%	6232.1	0.000
Feb-12	28	24,015	3,817.9	0	35,386	5,625.8	0	0	136	0	201	0	42,763	6799	0	9662	0	16	0	59.6%	301	0.00	0.0	58.7%	14673.6	0.000
Mar-12	31	23,730	3,772.7	0	59,267	9,422.4	0	0	122	0	304	0	66,494	10571	0	19084	0	19	0	71.4%	394	0.00	0.0	64.4%	26898.0	0.000
Apr-12	30	19,962	3,173.5	0	44,900	7,138.3	0	0	106	0	238	0	86,455	13745	0	26222	0	18	0	69.2%	316	0.00	0.0	65.6%	36389.2	0.000
May-12	31	16,898	2,686.5	0	38,162	6,067.2	0	0	87	0	196	0	103,353	16431	0	32289	0	19	0	69.3%	260	0.00	0.0	66.3%	44448.4	0.000
Jun-12	30	13,841	2,200.4	0	30,267	4,811.9	0	0	73	0	160	0	117,194	18632	0	37101	0	19	0	68.6%	215	0.00	0.0	66.6%	50891.1	0.000
Jul-12	31	11,731	1,865.0	0	26,808	4,262.0	0	0	60	0	137	0	128,925	20497	0	41363	0	18	0	69.6%	182	0.00	0.0	66.9%	56536.2	0.000
Aug-12	31	11,868	1,886.9	0	22,819	3,627.9	0	0	61	0	117	0	140,793	22384	0	44991	0	19	0	65.8%	162	0.00	0.0	66.8%	61560.0	0.000
Sep-12	30	9,772	1,553.6	0	22,282	3,542.5	0	0	52	0	118	0	150,565	23937	0	48534	0	19	0	69.5%	156	0.00	0.0	67.0%	66254.6	0.000
Oct-12	31	9,379	1,491.1	0	22,900	3,640.8	0	0	48	0	117	0	159,944	25428	0	52174	0	19	0	70.9%	153	0.00	0.0	67.2%	71002.4	0.000
Nov-12	30	8,289	1,317.8	0	20,415	3,245.7	0	0	44	0	108	0	168,233	26746	0	55420	0	19	0	71.1%	141	0.00	0.0	67.4%	75226.6	0.000
Dec-12	31	7,464	1,186.6	0	19,505	3,100.9	0	0	38	0	100	0	175,697	27933	0	58521	0	19	0	72.3%	128	0.00	0.0	67.7%	79209.5	0.000
Jan-13	31	6,125	973.8	0	16,855	2,679.6	0	0	31	0	86	0	181,822	28907	0	61201	0	18	0	73.3%	110	0.00	0.0	67.9%	82613.7	0.000
Feb-13	28	5,066	805.5	0	13,993	2,224.6	7,684	1,222	29	0	79	44	186,889	29712	0	63425	1222	17	0	73.4%	101	0.43	0.0	68.1%	85437.6	0.014
Mar-13	31	4,940	785.4	0	13,975	2,221.8	14,355	2,282	25	0	72	74	191,829	30497	0	65647	3504	17	0	73.9%	91	0.82	0.0	68.3%	88244.1	0.040
Apr-13	30	4,039	642.2	0	15,845	2,519.0	20,880	3,320	21	0	84	111	195,868	31140	0	68166	6823	17	0	79.7%	100	1.11	0.0	68.6%	91244.7	0.075
May-13	31	3,976	632.2	0	22,090	3,512.0	29,262	4,652	20	0	113	150	199,845	31772	0	71678	11475	17	0	84.7%	129	1.17	0.0	69.3%	95236.1	0.121
Jun-13	30	3,483	553.8	0	30,898	4,912.2	46,152	7,337	18	0	164	245	203,328	32326	0	76590	18813	17	0	89.9%	178	1.38	0.0	70.3%	100577.6	0.188
Jul-13	31	3,257	517.8	0	17,687	2,811.9	26,795	4,260	17	0	91	137	206,585	32843	0	79402	23073	15	0	84.4%	103	1.34	0.0	70.7%	103781.9	0.223
Aug-13	31	2,720	432.4	0	13,518	2,149.2	26,889	4,275	14	0	69	138	209,305	33276	0	81551	27348	15	0	83.3%	80	1.74	0.0	71.0%	106257.6	0.259
Sep-13	30	2,064	328.1	0	8,528	1,355.8	2,684	427	11	0	45	14	211,369	33604	0	82907	27774	14	0	80.5%	53	0.27	0.0	71.2%	107859.9	0.259
Oct-13	31	1,708	271.5	0	21,105	3,355.3	2,135	339	9	0	108	11	213,077	33875	0	86263	28114	15	0	92.5%	115	0.10	0.0	71.8%	111430.6	0.254
Nov-13	30	1,858	295.4	0	18,753	2,981.5	11,057	1,758	10	0	99	59	214,935	34171	0	89244	29872	15	0	91.0%	107	0.55	0.0	72.3%	114642.9	0.262
Dec-13	31	1,585	252.0	0	11,255	1,789.3	0	0	8	0	58	0	216,520	34423	0	91033	29872	16	0	87.7%	64	0.00	0.0	72.6%	116625.3	0.257
Jan-14	31	1,412	224.5	0	10,236	1,627.3	0	0	7	0	52	0	217,932	34647	0	92661	29872	16	0	87.9%	58	0.00	0.0	72.8%	118424.8	0.254
Feb-14	28	1,352	214.9	0	8,627	1,371.5	0	0	8	0	49	0	219,284	34862	0	94032	29872	15	0	86.5%	55	0.00	0.0	73.0%	119960.2	0.250
Mar-14	31	1,445	229.7	0	8,760	1,392.7	0	0	7	0	45	0	220,729	35092	0	95425	29872	15	0	85.8%	51	0.00	0.0	73.1%	121527.7	0.247
Apr-14	30	1,334	212.1	0	7,640	1,214.6	0	0	7	0	40	0	222,063	35304	0	96639	29872	15	0	85.1%	46	0.00	0.0	73.2%	122903.3	0.244
May-14	31	853	135.6	0	5,774	917.9	0	0	4	0	30	0	222,915	35440	0	97557	29872	14	0	87.1%	33	0.00	0.0	73.4%	123924.9	0.242
Jun-14	30	973	154.7	0	5,065	805.3	0	0	5	0	27	0	223,888	35594	0	98363	29872	14	0	83.9%	31	0.00	0.0	73.4%	124847.1	0.240
Jul-14	31	1,216	193.3	0	4,726	751.3	0	0	6	0	24	0	225,104	35788	0	99114	29872	14	0	79.5%	29	0.00	0.0	73.5%	125743.4	0.239
Aug-14	31	1,004	159.7	0	5,978	950.4	0	0	5	0	31	0	226,108	35947	0	100064	29872	13	0	85.6%	35	0.00	0.0	73.6%	126815.2	0.237
Sep-14	30	955	151.9	0	8,098	1,287.5	0	0	5	0	43	0	227,064	36099	0	101352	29872	13	0	89.4%	47	0.00	0.0	73.7%	128220.2	0.234
Oct-14	31	704	111.9	0	6,770	1,076.3	0	0	4	0	35	0	227,767	36211	0	102428	29872	12	0	90.6%	38	0.00	0.0	73.9%	129383.6	0.232
Nov-14	30	0	0.0	0	0	0.0	0	0	0	0	0	0	227,767	36211	0	102428	29872	0				0.0	73.9%	129383.6	0.232	
Dec-14	31	794	126.3	0	6,691	1,063.7	0	0	4	0	34	0	228,561	36337	0	103492	29872	11	0	89.4%	37	0.00	0.0	74.0%	130544.9	0.230
Jan-15	31	685	108.8	0	4,143	658.6	0	0	4	0	21	0	229,246	36446	0	104151	29872	9	0	85.8%	24	0.00	0.0	74.1%	131286.3	0.229
Feb-15	28	570	90.6	0	3,360	534.2	0	0	3	0	19	0	229,816	36537	0	104685	29872	8	0	85.5%	22	0.00	0.0	74.1%	131889.4	0.228
Mar-15	31	636	101.1	0	3,339	530.8	0	0	3	0	17	0	230,452	36638	0	105216	29872	8	0	84.0%	20	0.00	0.0	74.2%	132496.8	0.227
Apr-15	30	496	78.8	0	2,695	428.5	0	0	3	0	14	0	230,948	36717	0	105644	29872	6	0	84.5%	16	0.00	0.0	74.2%	132985.0	0.226
May-15	31	546	86.8	0	2,656	422.3	0	0	3	0	14	0	231,495	36804	0	106066	29872	7	0	82.9%	16	0.00	0.0	74.2%	133472.9	0.225
Jun-15	30	654	104.0	0	2,627	417.7	0	0	3	0	14	0	232,149	36908	0	106484	29872	7	0	80.1%	17	0.00	0.0	74.3%	133968.6	0.224
Jul-15	31	665	105.7	0	2,247	357.2	0	0	3	0	12	0	232,814	37013	0	106841	29872	7	0	77.2%	14	0.00	0.0	74.3%	134404.8	0.223
Aug-15	31	585	93.0	1.5	1,245	198.0	0	0	3	0	6	0	233,399	37106	2	107039	29872	6	16	68.0%	12	0.00	0.0	74.3%	134777.9	0.223
Sep-15	30	590	93.8	0.8	1,328	211.1	0	0	3	0	7	0	233,990	37200	2	107250	29872	6	9	69.2%	11	0.00	0.1	74.2%	135115.3	0.222
Oct-15	31	577	91.7	0	1,254	199.3	0	0	3	0	6	0	234,567	37292	2	107450	29872	6	0	68.5%	9	0.00	0.1	74.2%	135382.5	0.222
Nov-15	30	470	74.7	0	877	139.5	0	0	2	0	5	0	235,037	37367	2	107589	29872	6	0	65.1%	6	0.00	0.1	74.2%	135577.3	0.221
Dec-15	31	455	72.3	0	811	129.0	0	0	2	0	4	0	235,492	37439	2	107718	29872	6	0	64.1%	6	0.00	0.1	74.2%	135759.7	0.221
Jan-16	31	383	60.8	0	723	115.0	0	0	2	0	4	0	235,874	37500	2	107833	29872	6	0	65.4%	5	0.00	0.1	74.2%	135919.6	0.221
Feb-16	28	270	42.9	0	485	77.1	0	0	2	0	3	0	236,144	37543	2	107910	29872	6	0	64.3%	4	0.00	0.1	74.2%	136028.5	0.221
Mar-16	31	271	43.1	0	466	74.1	0	0	1	0	2	0	236,416	37586	2	107984	29872	5	0	63.2%	3	0.00	0.1	74.2%	136134.5	0.221
Apr-16	30	246	39.1	0	429	68.2	0	0	1	0</																

Waskada
Unit No. 15

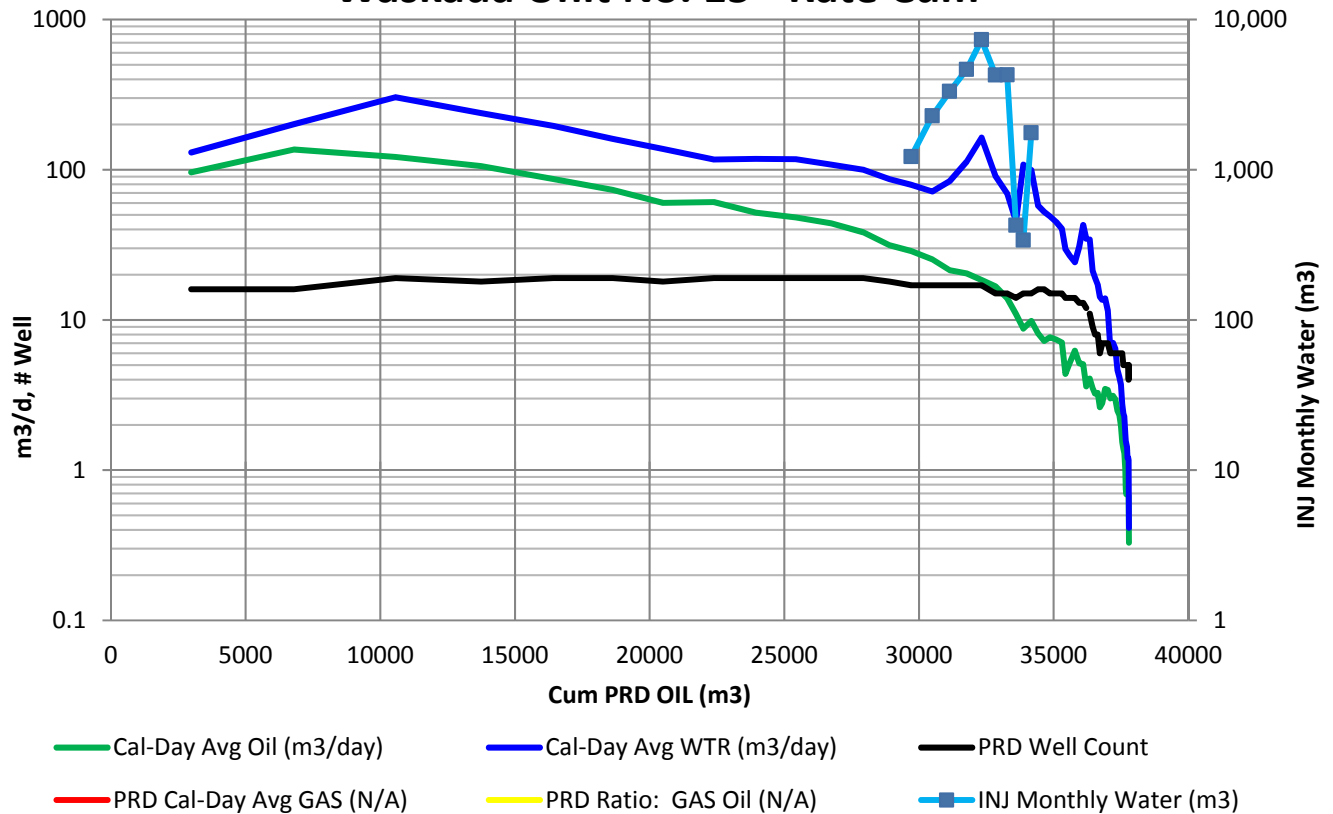
Date	Oil Prod (m3/d)	Gas Prod (e3m3/d)	H2O Prod (m3/d)	H2O Inj (m3/d)	Monthly VRR	Cum VRR	Cum PRD Oil (m3)	Cum PRD Gas (e3m3)	Cum PRD Water (m3)	Cum INJ Water (m3)
Dec-2016	0	-	0	-	0.00	0.220	37,795	2	108,366	29,872



Waskada Unit No. 15 - Rate Time



Waskada Unit No. 15 - Rate Cum



Waskada Unit No. 15 - Injection Parameters

Month	Oil Rate (m3/d)	Gas Rate (e3m3/d)	Water Rate (m3/d)	Water Inj Rate (m3/d)	Water Inj Press (psi)	Cum Oil (m3)	Cum Gas (e3m3)	Cum Water (m3)	Cum Inj Water (m3)	GOR (m3/m3)	WOR (m3/m3)
Jan-16	2.0	0.0	3.7	0.0		37,500	2.3	107,833	29871.5	0	1.89
Feb-16	1.5	0.0	2.8	0.0		37,543	2.3	107,910	29871.5	0	1.80
Mar-16	1.4	0.0	2.4	0.0		37,586	2.3	107,984	29871.5	0	1.72
Apr-16	1.3	0.0	2.3	0.0		37,625	2.3	108,052	29871.5	0	1.74
May-16	1.0	0.0	1.8	0.0		37,656	2.3	108,107	29871.5	0	1.75
Jun-16	0.7	0.0	1.6	0.0		37,679	2.3	108,154	29871.5	0	2.11
Jul-16	0.7	0.0	1.5	0.0		37,700	2.3	108,201	29871.5	0	2.16
Aug-16	0.7	0.0	1.4	0.0		37,722	2.3	108,245	29871.5	0	1.98
Sep-16	0.7	0.0	1.2	0.0		37,743	2.3	108,281	29871.5	0	1.75
Oct-16	0.7	0.0	1.2	0.0		37,764	2.3	108,319	29871.5	0	1.78
Nov-16	0.7	0.0	1.2	0.0		37,784	2.3	108,353	29871.5	0	1.73
Dec-16	0.3	0.0	0.4	0.0		37,795	2.3	108,366	29871.5	0	1.25

04/16-03-002-26W1 Rate vs Pressure

