

# **EOG Resources Canada Inc.**

**Waskada Unit No. 16**

***Waterflood Progress Report 2010***

***January 1<sup>st</sup> through December 31<sup>st</sup>, 2010***

**Prepared for:**

**Manitoba Industry, Economic Development and Mines  
Petroleum Branch**

**Prepared by:**

**EOG Resources Canada Inc.**

# **Table of Contents**

**Letter of Transmittal**

**Introduction**

**Discussion**

**Workovers**

**Corrosion and Scale Prevention**

**Conclusion**

## ***Figures***

1. Unit outlines

## ***Tables***

1. Group summary of unit wells
2. Voidage Replacement Ratio Calculation
3. Summary of Injector wells
4. Summary of Producing wells
5. 2010 Unit Workovers

## ***Appendices***

1. Unit Production and Injection for 2010
2. Unit Production and Injection since inception
3. Cumulative Production and Injection since inception
4. Workover Graphs





**EOG Resources Canada Inc.**  
1300, 700 – 9<sup>th</sup> Avenue S.W.  
Calgary, Alberta T2P 3V4

(403) 297-9100  
Fax (403) 297-9199  
Fax (403) 297-9198 Land/Accounting

April 28, 2011

Manitoba Industry  
Innovation, Energy and Mines  
Petroleum Branch  
360-1395 Ellice Ave.  
Winnipeg, Manitoba  
R3G 3P2

Attn: Ms. Jennifer Abel, Chief Petroleum Engineer

RE: Enhanced Oil Recovery Projects Report

---

EOG Resources Canada Inc. (EOG) is submitting an Enhanced Oil Recovery Projects Report to fulfill the requirements of subsection 73 of the Drilling and Production Regulations. We hope that this reports all requirements set forth.

We wish to apologize for the delay in submitting this report, and thank you for the extended submission date you granted us.

If you have any questions or wish to discuss this report any further, please feel free to contact the undersigned.

Sincerely,



Kevin Marshall  
Production Engineer (E.I.T.)  
(403) 297-9182  
Kevin\_Marshall@eogresources.com



## **Unit No. 16**

### **Introduction**

The Waskada Unit No.16 pressure maintenance project commenced water injection into the Lower Amaranth A pool in accordance with Manitoba Energy and Mines Order No. PM 57, dated May 1, 1987. This unit was then enlarged on October 1, 1988. Figure 1 shows a map of Unit No. 16.

Unit No.16 consists of 53 wells (producers/shut in/injectors) which are summarized in Table 1. Water injection commenced with 4 injector wells on June 1987. The unit was then enlarged and 5 more injection wells were added in December 1988. Fourteen injector wells were added in November 2001, and 3 more were added October 2002. There were 21 injector wells operating in 2010, 3 with erratic operations, and 18 that are continuously active. There are currently 24 producing wells. There have been no new producers added since August 1990.

### **Discussion**

From January 1 to December 31 in 2010, Unit No. 16 produced 20290 m<sup>3</sup> of total fluids (8225 m<sup>3</sup> oil, 10,831 water), and injected 146,328 m<sup>3</sup> of source water, giving an oil and water voidage replacement ratio (VRR) of 7.2 for this reporting period. This high VRR is necessary in order to try to increase the cumulative VRR close to 1.0. The cumulative VRR since injection commenced in May 1987 is presently at 0.7. Table 2 summarizes the yearly and cumulative VRR for Unit No.16.

In 2010 the injection rate was increased from approximately 7500m<sup>3</sup>/month in January to approximately 14300m<sup>3</sup>/month in March. This increase resulted in a small increase in produced volumes, as can be seen in Appendix 1. The injection rates have been steadily increased since 2002, which also had a positive effect on the oil production, as can be seen in Appendix 2.

Average wellhead injection pressures for the 21 injection wells for 2010 are 8200 kPa. The pressures remained constant throughout the reporting period. Individual injection rates and wellhead pressure summaries can be found in Table 3.

There have been no pressure surveys done on the reservoir.

Gas volumes from the field are measured at the 15-9-2-25W1M battery. There is no individual well gas volume measurement. It is not possible to separate out the gas production from only the wells in Unit 16, so the effectiveness of the pressure maintenance program cannot be evaluated on the GOR.

### **Workovers**

Seven workovers were performed in 2010, four on producers and three on injection wells. Four of the repairs were pump, packer or tubing repairs.

Three wells received acid treatments in an effort to increase oil production and injection rates. 14-4-2-25W1M and 14-10-2-25W1M, both oil producers, received treatments in July 2010. The 14-4-2-25W1M well responded with a slight increase in production, but the 14-10-2-25W1M well saw no production



change. One injection well, 1-9-2-25W1, received an acid treatment, and was successful. Injection rates increased while keeping the wellhead pressure constant. Production graphs for the workover wells can be found in Appendix 3. A workover summary can be found in Table 5.

### **Corrosion and Scale Prevention**

The facilities in Unit 16 are currently using cathodic protection and chemicals to protect against corrosion and scale. All facilities are monitored every 3 months to assess the corrosion and ensure that proper electrical current is being supplied. There have been no issues with corrosion or scale to date.

A biocide chemical is added to the injection water to prevent any sulphide producing bacteria from forming.

### **Conclusion**

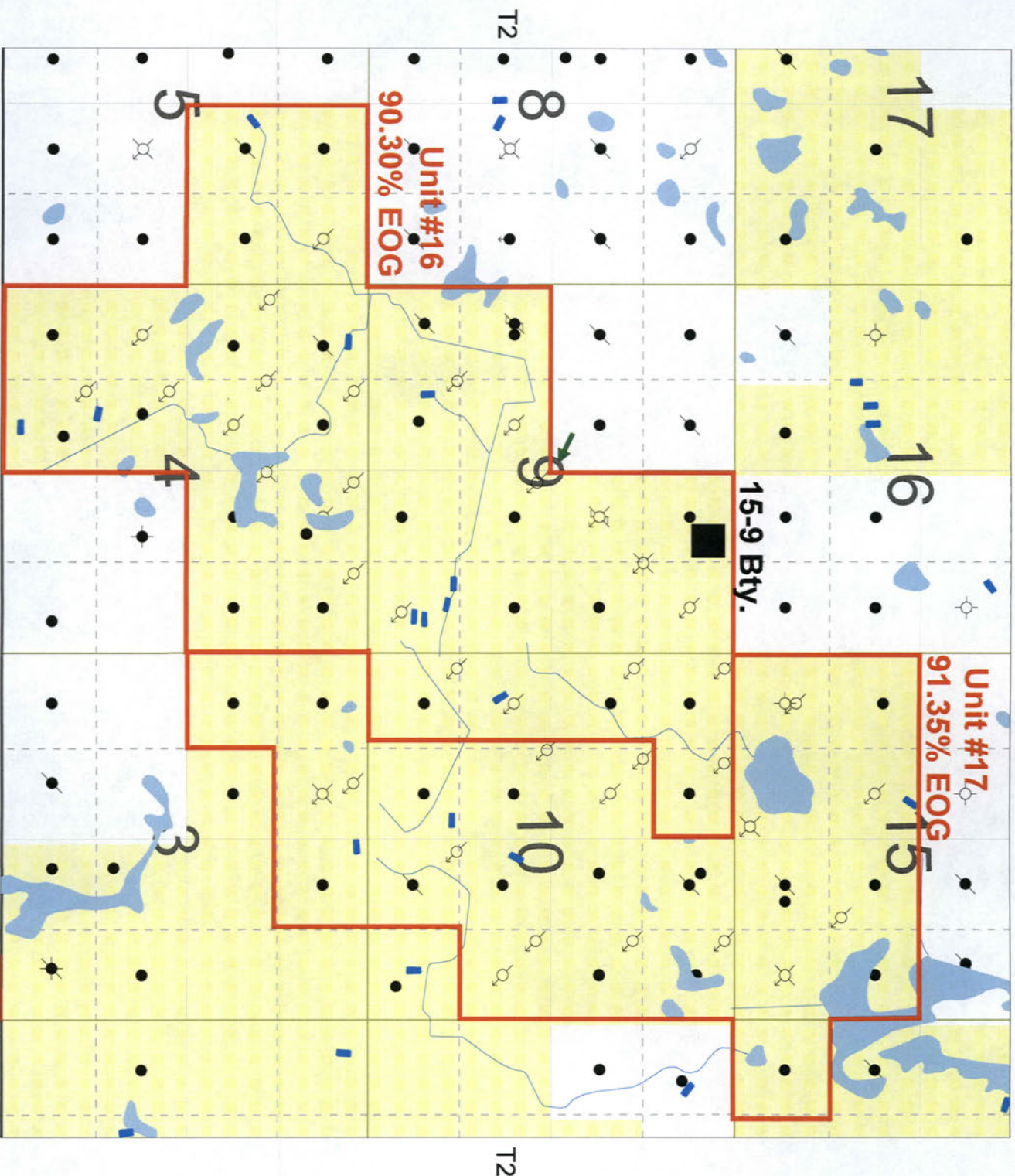
The current pressure maintenance program is having a positive effect on oil production in Unit No. 16. EOG will maintain the current pressure maintenance program, and continue to monitor production and pressure performance to try to reach a VRR of 1.0.

Production volumes remained on trend for the unit. There are no immediate future plans to add production or injection wells within the unit.

Figure 1



R25W1



# Table 1



# EOG Resources Canada Inc.

Maskada Unit No. 16  
2010 Well Summary

Well Location	Unit No.	Status	On Prod. Date	Cum Oil Prod. (m <sup>3</sup> )	Cum H <sub>2</sub> O Prod. (m <sup>3</sup> )	Last Prod. Date	On Inj. Date	Cum H <sub>2</sub> O Inj. (m <sup>3</sup> )	Last Inj. Date
00/03-04-002-25W1/0	16	prod	July-86	6783.5	177.7	Active	n/a	n/a	n/a
00/04-04-002-25W1/0	16	prod	February-86	18396.9	5241.0	Active	n/a	n/a	n/a
00/05-04-002-25W1/0	16	prod	August-85	3887.5	303.9	April-87	n/a	n/a	n/a
00/06-04-002-25W1/0	16	prod	February-86	25753.8	15134.1	Active	n/a	n/a	n/a
00/09-04-002-25W1/0	16	prod	August-87	7607.4	349.5	Active	n/a	n/a	n/a
00/10-04-002-25W1/0	16	prod	August-87	15468.8	318.5	Active	n/a	n/a	n/a
00/11-04-002-25W1/0	16	prod	February-86	755.1	34	April-87	n/a	n/a	n/a
00/12-04-002-25W1/0	16	prod	February-86	16198.2	5066.2	Active	n/a	n/a	n/a
00/13-04-002-25W1/0	16	abnd	August-85	6.7	101.0	September-85	n/a	n/a	n/a
00/13-04-002-25W1/2	16	prod	September-85	9095.5	11385.0	Active	n/a	n/a	n/a
00/14-04-002-25W1/0	16	prod	February-86	13403.8	5848.1	Active	n/a	n/a	n/a
00/15-04-002-25W1/0	16	prod	August-85	391.5	48.7	April-87	n/a	n/a	n/a
00/16-04-002-25W1/0	16	prod	September-87	9384.2	2602.3	Active	n/a	n/a	n/a
00/09-05-002-25W1/0	16	prod	November-85	41287.0	4762.7	Active	n/a	n/a	n/a
00/10-05-002-25W1/0	16	abnd	December-85	6507.8	112810.4	August-03	n/a	n/a	n/a
00/15-05-002-25W1/0	16	prod	December-85	7017.8	685.9	Active	n/a	n/a	n/a
00/16-05-002-25W1/0	16	prod	July-85	1181.1	425.4	April-87	n/a	n/a	n/a
00/01-09-002-25W1/0	16	prod	August-87	394.3	507.9	July-88	n/a	n/a	n/a
00/02-09-002-25W1/0	16	prod	July-86	16989.9	1196.4	Active	n/a	n/a	n/a
00/03-09-002-25W1/0	16	prod	August-87	37239.5	21718.2	Active	n/a	n/a	n/a
00/04-09-002-25W1/2	16	prod	July-84	11700.3	99537.2	Active	n/a	n/a	n/a
00/05-09-002-25W1/0	16	abnd	February-85	772.7	3250.5	February-89	n/a	n/a	n/a
00/05-09-002-25W1/2	16	prod	August-90	0	1034586.7	October-08	n/a	n/a	n/a
00/06-09-002-25W1/0	16	prod	November-87	850.5	40	August-88	n/a	n/a	n/a
00/07-09-002-25W1/0	16	prod	November-87	26640.0	15975.2	Active	n/a	n/a	n/a
00/08-09-002-25W1/0	16	prod	February-88	13536.0	5599.8	Active	n/a	n/a	n/a
00/09-09-002-25W1/0	16	prod	February-88	25167.8	11597.1	Active	n/a	n/a	n/a
00/10-09-002-25W1/0	16	abnd	March-86	1145.1	68.4	August-88	n/a	n/a	n/a
00/15-09-002-25W1/0	16	prod	January-86	8354.7	296.1	Active	n/a	n/a	n/a
00/16-09-002-25W1/0	16	prod	July-85	3365.2	203.2	August-88	n/a	n/a	n/a
00/04-10-002-25W1/0	16	prod	October-87	5405.7	608.1	Active	n/a	n/a	n/a
00/05-10-002-25W1/0	16	prod	March-88	338.8	32.8	August-88	n/a	n/a	n/a
00/12-10-002-25W1/0	16	prod	March-88	32668.4	45231.1	Active	n/a	n/a	n/a
00/13-10-002-25W1/0	16	prod	February-88	26017.7	2067.3	Active	n/a	n/a	n/a



# EOG Resources Canada Inc.

Maskada Unit No. 16  
2010 Well Summary

Well Location	Unit No.	Status	On Prod. Date	Cum Oil Prod. (m <sup>3</sup> )	Cum H <sub>2</sub> O Prod. (m <sup>3</sup> )	Last Prod. Date	On Inj. Date	Cum H <sub>2</sub> O Inj. (m <sup>3</sup> )	Last Inj. Date
00/14-10-002-25W1/0	16	prod	January-86	7847.9	1454.3	Active	n/a	n/a	n/a
02/15-04-002-25W1/0	16	prod	March-06	2149.7	279.0	Active	n/a	n/a	n/a
02/05-09-002-25W1/0	16	prod	November-89	7455.5	968.0	Active	n/a	n/a	n/a
C0/03-04-002-25W1/0	16	inj	n/a	n/a	n/a	n/a	October-02	19812.9	Active
00/05-04-002-25W1/0	16	inj	n/a	n/a	n/a	n/a	June-87	103541.6	Active
C0/06-04-002-25W1/0	16	inj	n/a	n/a	n/a	n/a	October-02	13877.9	Active
C0/10-04-002-25W1/0	16	abnd	n/a	n/a	n/a	n/a	November-01	1829.3	October-03
00/11-04-002-25W1/0	16	inj	n/a	n/a	n/a	n/a	June-87	26180.6	July-10
C0/11-04-002-25W1/0	16	inj	n/a	n/a	n/a	n/a	November-01	10555	Active
C0/12-04-002-25W1/0	16	inj	n/a	n/a	n/a	n/a	October-02	10343.8	Active
C0/14-04-002-25W1/0	16	inj	n/a	n/a	n/a	n/a	November-01	23588.4	Active
00/15-04-002-25W1/0	16	inj	n/a	n/a	n/a	n/a	June-87	32056.9	March-10
C0/15-04-002-25W1/0	16	inj	n/a	n/a	n/a	n/a	November-01	6514.9	Active
C0/16-04-002-25W1/0	16	inj	n/a	n/a	n/a	n/a	November-01	1482.6	May-10
00/16-05-002-25W1/0	16	inj	n/a	n/a	n/a	n/a	June-87	68270.7	August-04
00/01-09-002-25W1/0	16	inj	n/a	n/a	n/a	n/a	December-88	20554.7	Active
02/01-09-002-25W1/0	16	inj	n/a	n/a	n/a	n/a	November-01	12443	Active
C0/03-09-002-25W1/0	16	inj	n/a	n/a	n/a	n/a	November-01	8827.5	Active
00/06-09-002-25W1/0	16	inj	n/a	n/a	n/a	n/a	December-88	47187	Active
C0/07-09-002-25W1/0	16	inj	n/a	n/a	n/a	n/a	November-01	10063.6	Active
C0/09-09-002-25W1/0	16	abnd	n/a	n/a	n/a	n/a	November-01	20382.5	October-04
00/10-09-002-25W1/0	16	abnd	n/a	n/a	n/a	n/a	December-88	48805.8	August-01
00/16-09-002-25W1/0	16	inj	n/a	n/a	n/a	n/a	December-88	315062.6	Active
C0/04-10-002-25W1/0	16	inj	n/a	n/a	n/a	n/a	November-01	2544.7	Active
00/05-10-002-25W1/0	16	inj	n/a	n/a	n/a	n/a	December-88	371042.8	Active
02/05-10-002-25W1/0	16	inj	n/a	n/a	n/a	n/a	November-01	35388.4	Active
C0/12-10-002-25W1/0	16	inj	n/a	n/a	n/a	n/a	November-01	35240.3	Active
C0/13-10-002-25W1/0	16	inj	n/a	n/a	n/a	n/a	November-01	2084.6	May-09
C0/14-10-002-25W1/0	16	inj	n/a	n/a	n/a	n/a	November-01	19590.1	Active



## Table 2

# EOG Resources Canada Inc.

Waskada Unit 16  
2010 VRR Calculation

Year	Prod. Oil (m <sup>3</sup> )	Cum Prod. Oil (m <sup>3</sup> )	Prod. H <sub>2</sub> O (m <sup>3</sup> )	Cum Prod. H <sub>2</sub> O (m <sup>3</sup> )	Prod Fluid Rsvr (m <sup>3</sup> )	H <sub>2</sub> O Injected (m <sup>3</sup> )	Cum Prod. Oil/H <sub>2</sub> O Rsvr (m <sup>3</sup> )	Cum H <sub>2</sub> O Injected (m <sup>3</sup> )	Annual VRR	Cum VRR (m <sup>3</sup> /m <sup>3</sup> )
1984	774	774	1,892	1,892	2,781.6	0	2,781.6	0.0	0.0	0.0
1985	5,938	6,712	3,359	5,251	10,188.6	0	12,970.1	0.0	0.0	0.0
1986	16,130	22,842	3,175	8,426	21,725.0	0	34,695.2	0.0	0.0	0.0
1987	19,644	42,487	5,006	13,432	27,596.3	19,770	62,291.5	19,770.3	0.7	0.3
1988	33,617	76,104	5,787	19,219	44,447.3	18,857	106,738.8	38,627.4	0.4	0.4
1989	29,005	105,109	4,528	23,748	37,884.2	36,119	144,622.9	74,746.2	1.0	0.5
1990	27,089	132,198	13,534	37,282	44,686.6	38,515	189,309.5	113,261.5	0.9	0.6
1991	24,743	156,942	24,878	62,160	53,333.2	39,653	242,642.7	152,914.0	0.7	0.6
1992	21,330	178,272	66,961	129,121	91,490.6	18,966	334,133.3	171,879.8	0.2	0.5
1993	19,754	198,026	72,774	201,894	95,490.8	16,521	429,624.1	188,400.8	0.2	0.4
1994	18,064	216,090	76,018	277,912	96,791.4	18,862	526,415.5	207,263.1	0.2	0.4
1995	16,721	232,811	106,240	384,152	125,469.0	38,999	651,884.5	246,261.8	0.3	0.4
1996	14,843	247,654	107,099	491,251	124,167.8	36,447	776,052.3	282,708.9	0.3	0.4
1997	13,016	260,670	100,417	591,667	115,385.2	35,740	891,437.6	318,449.3	0.3	0.4
1998	11,726	272,396	101,588	693,255	115,072.9	40,470	1,006,510.5	358,919.0	0.4	0.4
1999	11,715	284,110	103,785	797,040	117,256.8	37,339	1,123,767.3	396,258.4	0.3	0.4
2000	10,087	294,197	36,787	833,828	48,387.2	14,073	1,172,154.5	410,331.2	0.3	0.4
2001	10,124	304,321	44,885	878,713	56,527.4	28,196	1,228,681.9	438,527.5	0.5	0.4
2002	17,231	321,552	66,270	944,983	86,086.3	88,619	1,314,768.2	527,146.1	1.0	0.4
2003	15,739	337,291	104,552	1,049,536	122,651.9	66,491	1,437,420.1	593,637.5	0.5	0.4
2004	14,340	351,631	122,640	1,172,176	139,131.2	51,375	1,576,551.3	645,012.6	0.4	0.4
2005	11,626	363,256	63,637	1,235,813	77,006.3	64,324	1,653,557.7	709,336.9	0.8	0.4
2006	11,598	374,855	47,643	1,283,456	60,980.8	72,897	1,714,538.5	782,233.9	1.2	0.5
2007	10,417	385,272	51,461	1,334,917	63,440.8	109,531	1,777,979.3	891,765.2	1.7	0.5
2008	9,323	394,594	54,763	1,389,680	65,484.2	123,488	1,843,463.4	1,015,253.0	1.9	0.6
2009	8,347	402,941	10,000	1,399,680	19,598.6	105,691	1,863,062.0	1,120,944.1	5.4	0.6
2010	8,225	411,166	10,832	1,410,512	20,290.9	146,328	1,883,352.9	1,267,272.2	7.2	0.7

TOTAL 411,166.3

1,410,511.7

1,883,352.9 1,267,272.2

0.7

NOTE: A FORMATION VOLUME FACTOR OF 1.15 WAS USED

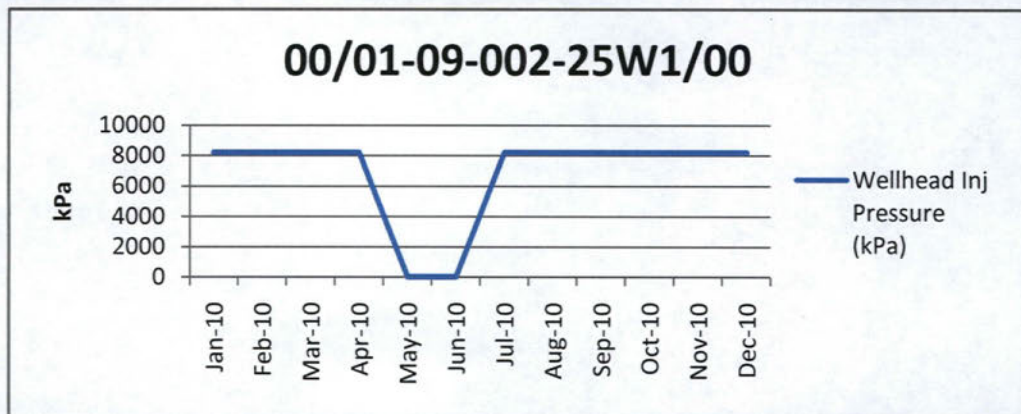


## Table 3

# EOG Resources Canada Inc.

Waskada Unit No. 16  
2010 Injection Volumes

Well Location	Date	Hours On	H <sub>2</sub> O Inj Cal-d avg (m <sup>3</sup> /d)	H <sub>2</sub> O Inj Prd-d avg (m <sup>3</sup> /d)	Monthly Injected H <sub>2</sub> O (m <sup>3</sup> )	Wellhead Inj Pressure (kPa)
---------------	------	----------	--	--	---	--------------------------------



00/01-09-002-25W1/00

Jan-10	312	0.7	1.7	21.78	8200
Feb-10	528	1.2	1.5	33.94	8200
Mar-10	696	1.8	2.0	56.88	8200
Apr-10	0	0.0	0.0	0.01	8200
May-10	0	0.0	0.0	0.00	0
Jun-10	0	0.0	0.0	0.00	0
Jul-10	54	0.9	12.0	26.91	8200
Aug-10	672	4.8	5.3	148.76	8200
Sep-10	720	4.0	4.0	118.92	8200
Oct-10	744	3.5	3.5	109.05	8200
Nov-10	720	2.8	2.8	84.97	8200
Dec-10	744	2.8	2.8	87.50	8200

2010 Totals:

5190

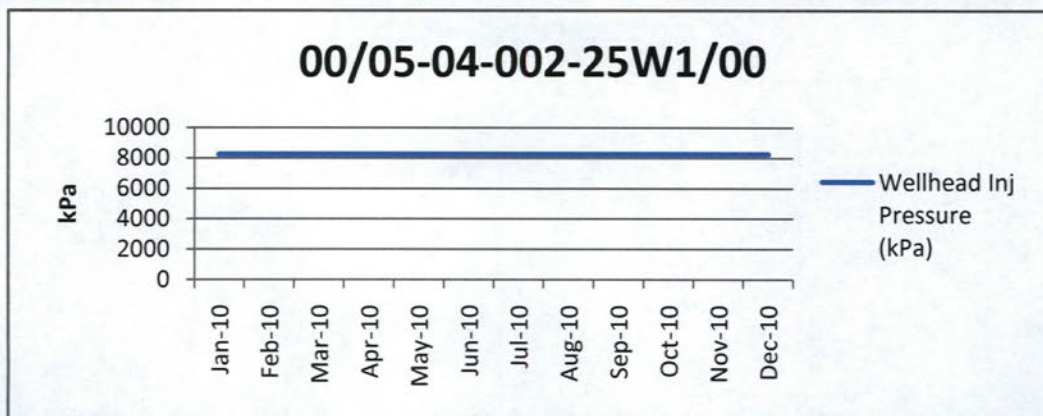
688.7



# EOG Resources Canada Inc.

Waskada Unit No. 16  
2010 Injection Volumes

Well Location	Date	Hours On	H <sub>2</sub> O Inj Cal-d avg (m <sup>3</sup> /d)	H <sub>2</sub> O Inj Prd-d avg (m <sup>3</sup> /d)	Monthly Injected H <sub>2</sub> O (m <sup>3</sup> )	Wellhead Inj Pressure (kPa)
---------------	------	----------	--	--	---	--------------------------------



00/05-04-002-25W1/00

Jan-10	432	5.7	9.7	175.25	8200
Feb-10	672	10.2	10.2	285.47	8200
Mar-10	744	10.2	10.2	315.26	8200
Apr-10	720	10.2	10.2	305.48	8200
May-10	744	10.2	10.2	314.68	8200
Jun-10	720	10.2	10.2	304.59	8200
Jul-10	744	10.2	10.2	316.86	8200
Aug-10	744	10.1	10.1	313.02	8200
Sep-10	720	10.2	10.2	306.71	8200
Oct-10	744	10.2	10.2	316.53	8200
Nov-10	720	10.2	10.2	306.57	8200
Dec-10	648	8.9	10.2	275.65	8200

2010 Totals:

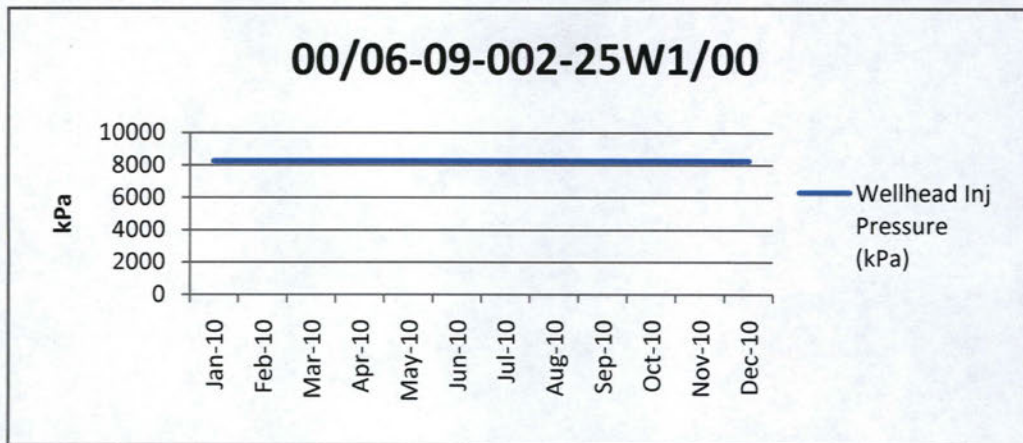
8352

3536.1

# EOG Resources Canada Inc.

Waskada Unit No. 16  
2010 Injection Volumes

Well Location	Date	Hours On	H <sub>2</sub> O Inj Cal-d avg (m <sup>3</sup> /d)	H <sub>2</sub> O Inj Prd-d avg (m <sup>3</sup> /d)	Monthly Injected H <sub>2</sub> O (m <sup>3</sup> )	Wellhead Inj Pressure (kPa)
---------------	------	----------	--	--	---	--------------------------------



00/06-09-002-25W1/00

Jan-10	456	1.1	1.8	33.72	8200
Feb-10	672	1.4	1.4	39.92	8200
Mar-10	528	0.7	0.9	20.79	8200
Apr-10	720	0.8	0.8	24.09	8200
May-10	744	0.5	0.5	14.62	8200
Jun-10	504	0.4	0.5	11.39	8200
Jul-10	504	1.1	1.6	32.60	8200
Aug-10	744	1.1	1.1	35.59	8200
Sep-10	720	1.0	1.0	29.64	8200
Oct-10	744	0.8	0.8	24.08	8200
Nov-10	720	0.5	0.5	13.93	8200
Dec-10	648	0.3	0.4	10.48	8200

2010 Totals:

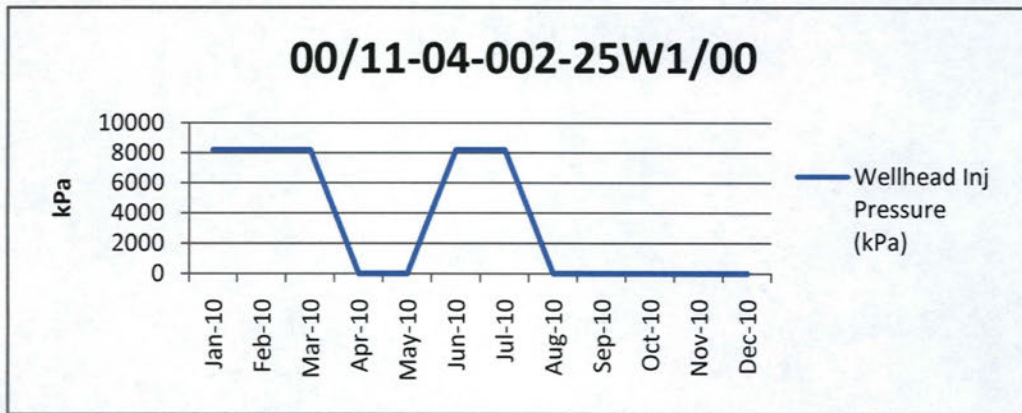
7704	290.9
------	-------



# EOG Resources Canada Inc.

Waskada Unit No. 16  
2010 Injection Volumes

Well Location	Date	Hours On	H <sub>2</sub> O Inj Cal-d avg (m <sup>3</sup> /d)	H <sub>2</sub> O Inj Prd-d avg (m <sup>3</sup> /d)	Monthly Injected H <sub>2</sub> O (m <sup>3</sup> )	Wellhead Inj Pressure (kPa)
---------------	------	----------	--	--	---	--------------------------------



00/11-04-002-25W1/00

Jan-10	408	1.2	2.1	35.68	8200
Feb-10	120	0.1	0.6	2.88	8200
Mar-10	144	0.4	2.2	13.40	8200
Apr-10	0	0.0	0.0	0.00	0
May-10	0	0.0	0.0	0.00	0
Jun-10	216	0.3	1.1	10.18	8200
Jul-10	72	0.0	0.4	1.22	8200
Aug-10	0	0.0	0.0	0.00	0
Sep-10	0	0.0	0.0	0.00	0
Oct-10	0	0.0	0.0	0.00	0
Nov-10	0	0.0	0.0	0.00	0
Dec-10	0	0.0	0.0	0.00	0

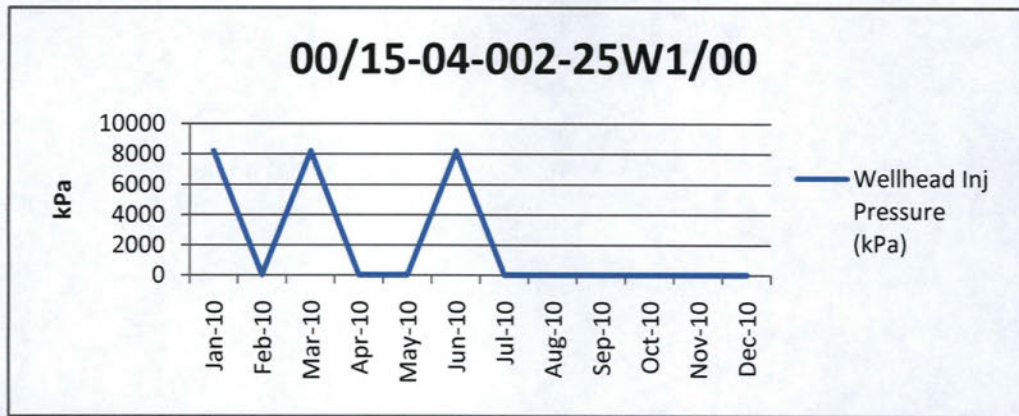
2010 Totals:

960	63.4
-----	------

# EOG Resources Canada Inc.

Waskada Unit No. 16  
2010 Injection Volumes

Well Location	Date	Hours On	H <sub>2</sub> O Inj Cal-d avg (m <sup>3</sup> /d)	H <sub>2</sub> O Inj Prd-d avg (m <sup>3</sup> /d)	Monthly Injected H <sub>2</sub> O (m <sup>3</sup> )	Wellhead Inj Pressure (kPa)
---------------	------	----------	--	--	---	--------------------------------



00/15-04-002-25W1/00

Jan-10	120	0.3	1.8	9.10	8200
Feb-10	0	0.0	0.0	0.00	0
Mar-10	24	0.0	0.2	0.17	8200
Apr-10	0	0.0	0.0	0.00	0
May-10	0	0.0	0.0	0.00	0
Jun-10	0	0.0	0.0	0.03	8200
Jul-10	0	0.0	0.0	0.00	0
Aug-10	0	0.0	0.0	0.00	0
Sep-10	0	0.0	0.0	0.00	0
Oct-10	0	0.0	0.0	0.00	0
Nov-10	0	0.0	0.0	0.00	0
Dec-10	0	0.0	0.0	0.00	0

2010 Totals:

144

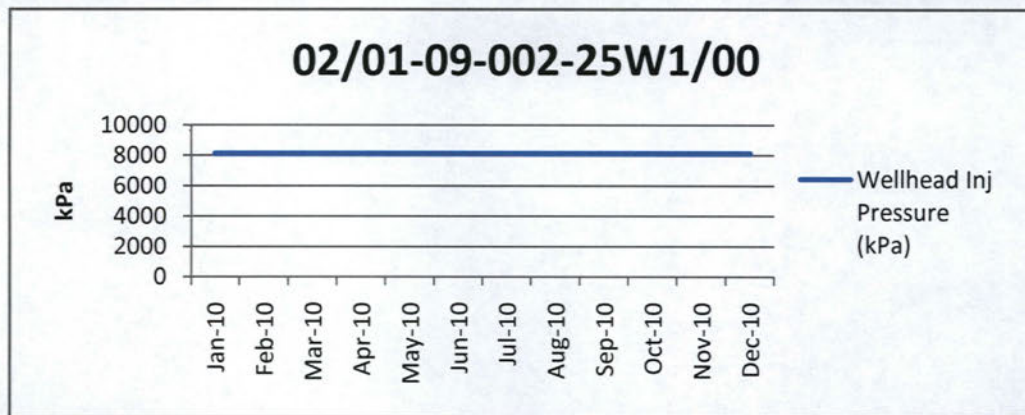
9.3



# EOG Resources Canada Inc.

Waskada Unit No. 16  
2010 Injection Volumes

Well Location	Date	Hours On	H <sub>2</sub> O Inj Cal-d avg (m <sup>3</sup> /d)	H <sub>2</sub> O Inj Prd-d avg (m <sup>3</sup> /d)	Monthly Injected H <sub>2</sub> O (m <sup>3</sup> )	Wellhead Inj Pressure (kPa)
---------------	------	----------	--	--	---	--------------------------------



02/01-09-002-25W1/00

Jan-10	456	1.2	2.0	37.91	8100
Feb-10	672	1.5	1.5	41.77	8100
Mar-10	504	0.9	1.4	28.84	8100
Apr-10	576	1.0	1.2	29.20	8100
May-10	744	0.8	0.8	23.95	8100
Jun-10	504	0.2	0.3	7.27	8100
Jul-10	552	0.6	0.9	19.69	8100
Aug-10	744	0.4	0.4	12.25	8100
Sep-10	720	0.4	0.4	13.46	8100
Oct-10	744	0.3	0.3	10.60	8100
Nov-10	720	0.4	0.4	12.14	8100
Dec-10	744	0.6	0.6	18.18	8100

2010 Totals:

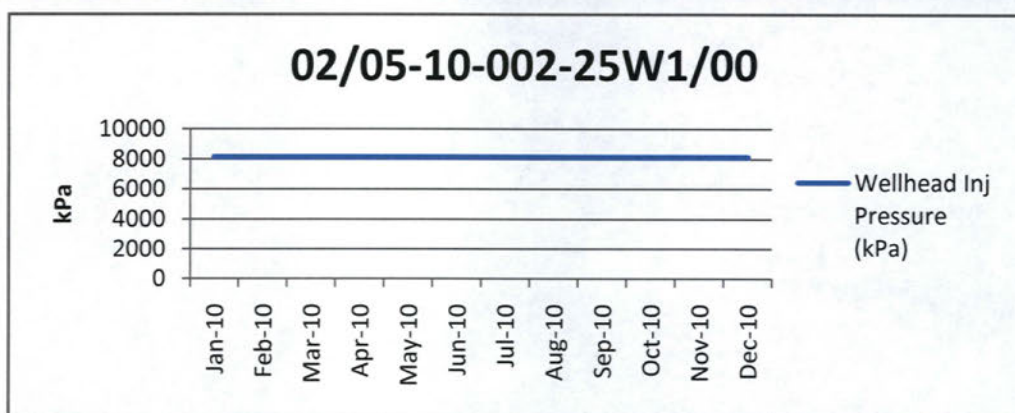
7680	255.3
------	-------

# EOG Resources Canada Inc.

Waskada Unit No. 16

2010 Injection Volumes

Well Location	Date	Hours On	H <sub>2</sub> O Inj Cal-d avg (m <sup>3</sup> /d)	H <sub>2</sub> O Inj Prd-d avg (m <sup>3</sup> /d)	Monthly Injected H <sub>2</sub> O (m <sup>3</sup> )	Wellhead Inj Pressure (kPa)
---------------	------	----------	--	--	---	--------------------------------



02/05-10-002-25W1/00

Jan-10	456	4.5	7.4	140.52	8100
Feb-10	672	10.2	10.2	285.35	8100
Mar-10	744	10.2	10.2	316.29	8100
Apr-10	720	10.2	10.2	305.42	8100
May-10	744	10.2	10.2	315.00	8100
Jun-10	720	7.8	7.8	235.07	8100
Jul-10	744	8.2	8.2	254.54	8100
Aug-10	744	8.2	8.2	254.67	8100
Sep-10	720	7.9	7.9	237.28	8100
Oct-10	744	7.4	7.4	228.84	8100
Nov-10	720	7.2	7.2	215.34	8100
Dec-10	744	7.9	7.9	244.26	8100

2010 Totals:

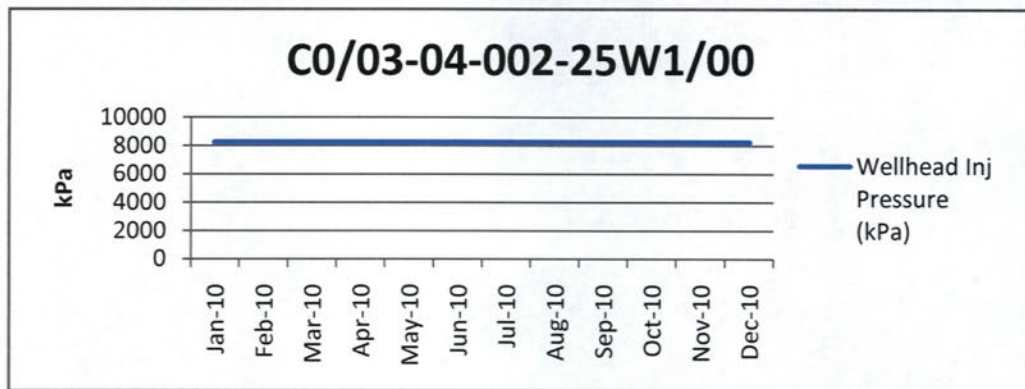
8472	3032.6
------	--------



# EOG Resources Canada Inc.

Waskada Unit No. 16  
2010 Injection Volumes

Well Location	Date	Hours On	H <sub>2</sub> O Inj Cal-d avg (m <sup>3</sup> /d)	H <sub>2</sub> O Inj Prd-d avg (m <sup>3</sup> /d)	Monthly Injected H <sub>2</sub> O (m <sup>3</sup> )	Wellhead Inj Pressure (kPa)
---------------	------	----------	--	--	---	--------------------------------



C0/03-04-002-25W1/00

Jan-10	432	4.4	7.6	136.96	8200
Feb-10	672	7.7	7.7	215.48	8200
Mar-10	744	7.2	7.2	224.33	8200
Apr-10	720	6.5	6.5	195.97	8200
May-10	744	6.4	6.4	199.09	8200
Jun-10	720	5.7	5.7	170.38	8200
Jul-10	744	5.2	5.2	160.57	8200
Aug-10	744	5.1	5.1	156.86	8200
Sep-10	720	4.9	4.9	145.73	8200
Oct-10	744	5.0	5.0	155.42	8200
Nov-10	720	5.2	5.2	154.73	8200
Dec-10	744	5.6	5.6	173.42	8200

2010 Totals:

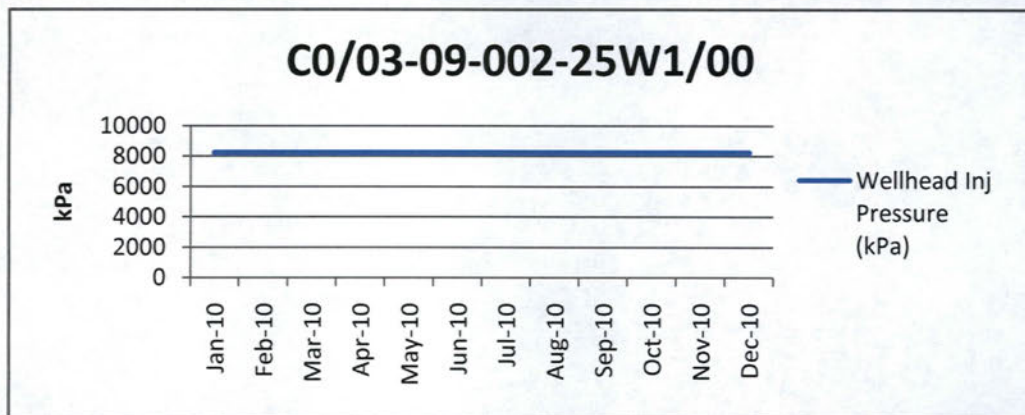
8448

2088.9

# EOG Resources Canada Inc.

Waskada Unit No. 16  
2010 Injection Volumes

Well Location	Date	Hours On	H <sub>2</sub> O Inj Cal-d avg (m <sup>3</sup> /d)	H <sub>2</sub> O Inj Prd-d avg (m <sup>3</sup> /d)	Monthly Injected H <sub>2</sub> O (m <sup>3</sup> )	Wellhead Inj Pressure (kPa)
---------------	------	----------	--	--	---	--------------------------------



C0/03-09-002-25W1/00

Jan-10	456	2.1	3.3	63.60	8200
Feb-10	672	2.8	2.8	77.96	8200
Mar-10	480	1.7	2.6	51.83	8200
Apr-10	624	2.4	2.8	72.87	8200
May-10	744	2.3	2.3	72.03	8200
Jun-10	504	1.3	1.9	39.73	8200
Jul-10	576	2.1	2.7	64.54	8200
Aug-10	744	2.3	2.3	70.34	8200
Sep-10	720	2.1	2.1	63.01	8200
Oct-10	744	2.1	2.1	63.71	8200
Nov-10	720	1.8	1.8	52.96	8200
Dec-10	744	1.8	1.8	57.10	8200

2010 Totals:

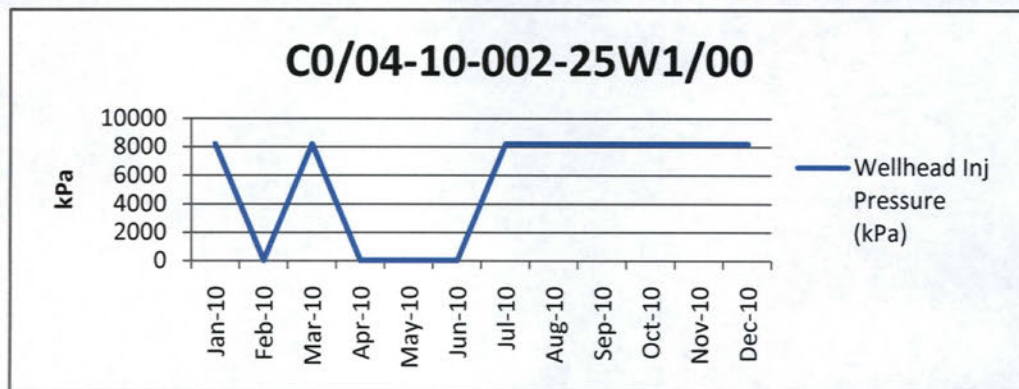
7728	749.7
------	-------



# EOG Resources Canada Inc.

Waskada Unit No. 16  
2010 Injection Volumes

Well Location	Date	Hours On	H <sub>2</sub> O Inj Cal-d avg (m <sup>3</sup> /d)	H <sub>2</sub> O Inj Prd-d avg (m <sup>3</sup> /d)	Monthly Injected H <sub>2</sub> O (m <sup>3</sup> )	Wellhead Inj Pressure (kPa)
---------------	------	----------	--	--	---	--------------------------------



C0/04-10-002-25W1/00

Jan-10	96	0.0	0.2	0.93	8200
Feb-10	0	0.0	0.0	0.00	0
Mar-10	120	0.0	0.2	0.93	8200
Apr-10	0	0.0	0.0	0.00	0
May-10	0	0.0	0.0	0.00	0
Jun-10	0	0.0	0.0	0.00	0
Jul-10	264	0.4	1.2	13.69	8200
Aug-10	744	0.3	0.3	7.76	8200
Sep-10	720	0.2	0.2	5.99	8200
Oct-10	744	0.2	0.2	5.61	8200
Nov-10	720	0.2	0.2	5.29	8200
Dec-10	744	0.3	0.3	9.95	8200

2010 Totals:

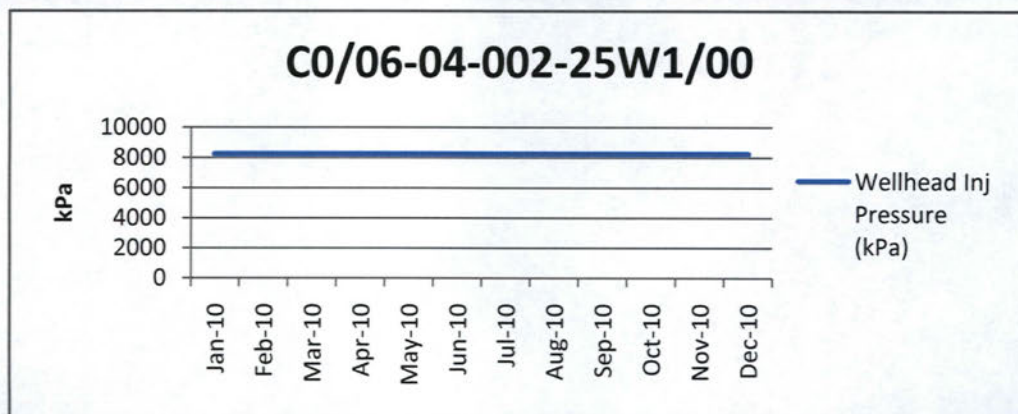
4152

50.2

# EOG Resources Canada Inc.

Waskada Unit No. 16  
2010 Injection Volumes

Well Location	Date	Hours On	H <sub>2</sub> O Inj Cal-d avg (m <sup>3</sup> /d)	H <sub>2</sub> O Inj Prd-d avg (m <sup>3</sup> /d)	Monthly Injected H <sub>2</sub> O (m <sup>3</sup> )	Wellhead Inj Pressure (kPa)
---------------	------	----------	--	--	---	--------------------------------



C0/06-04-002-25W1/00

Jan-10	408	4.1	7.5	127.97	8200
Feb-10	672	7.9	7.9	221.00	8200
Mar-10	744	7.7	7.7	238.99	8200
Apr-10	720	7.7	7.7	229.98	8200
May-10	744	7.4	7.4	229.09	8200
Jun-10	720	7.2	7.2	216.16	8200
Jul-10	744	7.1	7.1	220.28	8200
Aug-10	744	7.1	7.1	219.88	8200
Sep-10	720	7.3	7.3	218.76	8200
Oct-10	744	7.3	7.3	226.97	8200
Nov-10	720	7.4	7.4	221.05	8200
Dec-10	744	8.0	8.0	246.95	8200

2010 Totals:

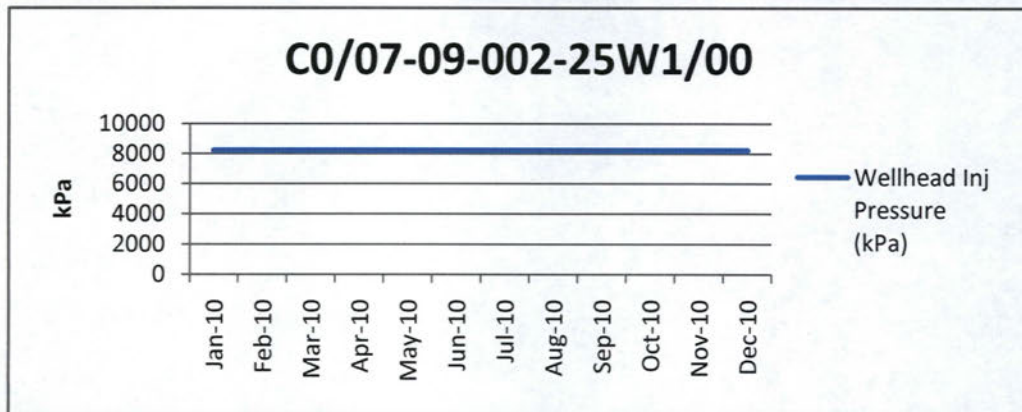
8424	2617.1
------	--------



# EOG Resources Canada Inc.

Waskada Unit No. 16  
2010 Injection Volumes

Well Location	Date	Hours On	H <sub>2</sub> O Inj Cal-d avg (m <sup>3</sup> /d)	H <sub>2</sub> O Inj Prd-d avg (m <sup>3</sup> /d)	Monthly Injected H <sub>2</sub> O (m <sup>3</sup> )	Wellhead Inj Pressure (kPa)
---------------	------	----------	--	--	---	--------------------------------



C0/07-09-002-25W1/00

Jan-10	456	2.7	4.4	83.02	8200
Feb-10	672	3.8	3.8	105.45	8200
Mar-10	720	3.1	3.2	95.48	8200
Apr-10	720	2.7	2.7	82.30	8200
May-10	744	2.6	2.6	80.82	8200
Jun-10	504	1.6	2.3	48.19	8200
Jul-10	528	2.0	2.8	60.86	8200
Aug-10	744	2.4	2.4	73.95	8200
Sep-10	720	1.7	1.7	51.64	8200
Oct-10	744	2.1	2.1	63.57	8200
Nov-10	720	2.0	2.0	59.92	8200
Dec-10	744	2.3	2.3	70.34	8200

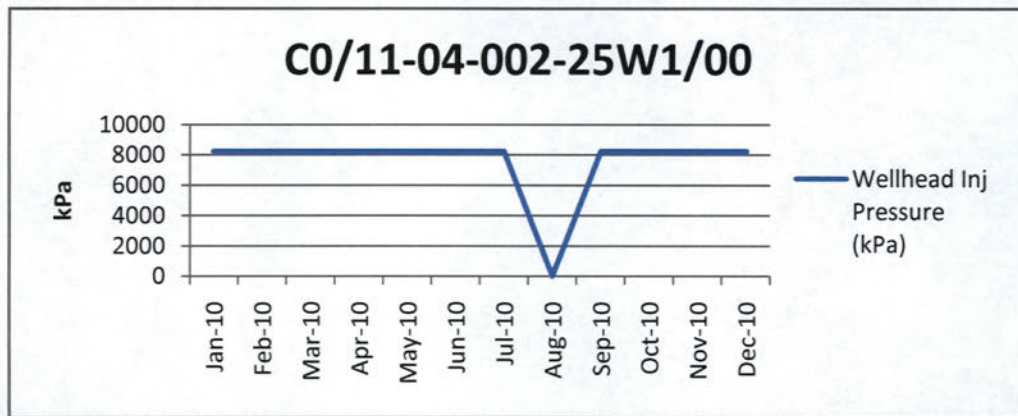
2010 Totals:

8016	875.5
------	-------

# EOG Resources Canada Inc.

Waskada Unit No. 16  
2010 Injection Volumes

Well Location	Date	Hours On	H <sub>2</sub> O Inj Cal-d avg (m <sup>3</sup> /d)	H <sub>2</sub> O Inj Prd-d avg (m <sup>3</sup> /d)	Monthly Injected H <sub>2</sub> O (m <sup>3</sup> )	Wellhead Inj Pressure (kPa)
---------------	------	----------	--	--	---	--------------------------------



C0/11-04-002-25W1/00

Jan-10	408	1.7	3.0	51.32	8200
Feb-10	672	2.5	2.5	71.37	8200
Mar-10	696	1.9	2.0	57.35	8200
Apr-10	648	1.9	2.1	57.13	8200
May-10	744	1.9	1.9	58.96	8200
Jun-10	720	1.7	1.7	50.43	8200
Jul-10	720	0.5	0.5	14.61	8200
Aug-10	168	0.0	0.0	0.00	0
Sep-10	576	2.3	2.9	69.11	8200
Oct-10	744	2.2	2.2	68.72	8200
Nov-10	720	2.2	2.2	66.12	8200
Dec-10	744	2.2	2.2	69.07	8200

2010 Totals:

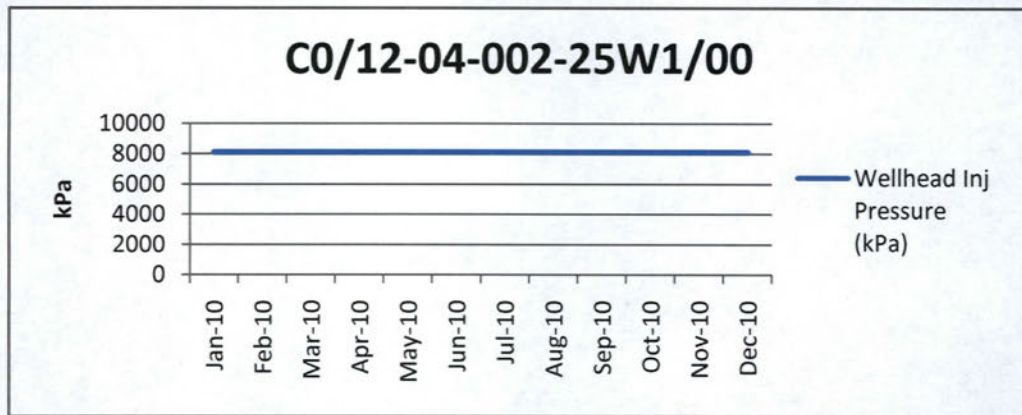
7560	634.2
------	-------



# EOG Resources Canada Inc.

Waskada Unit No. 16  
2010 Injection Volumes

Well Location	Date	Hours On	H <sub>2</sub> O Inj Cal-d avg (m <sup>3</sup> /d)	H <sub>2</sub> O Inj Prd-d avg (m <sup>3</sup> /d)	Monthly Injected H <sub>2</sub> O (m <sup>3</sup> )	Wellhead Inj Pressure (kPa)
---------------	------	----------	--	--	---	--------------------------------



C0/12-04-002-25W1/00

Jan-10	408	2.3	4.1	69.77	8100
Feb-10	672	4.0	4.0	111.78	8100
Mar-10	744	3.7	3.7	114.63	8100
Apr-10	720	3.5	3.5	104.29	8100
May-10	744	3.4	3.4	104.58	8100
Jun-10	720	3.2	3.2	96.81	8100
Jul-10	744	3.4	3.4	104.57	8100
Aug-10	744	3.3	3.3	101.83	8100
Sep-10	720	3.3	3.3	98.05	8100
Oct-10	744	3.2	3.2	99.62	8100
Nov-10	720	3.3	3.3	98.49	8100
Dec-10	744	3.7	3.7	115.11	8100

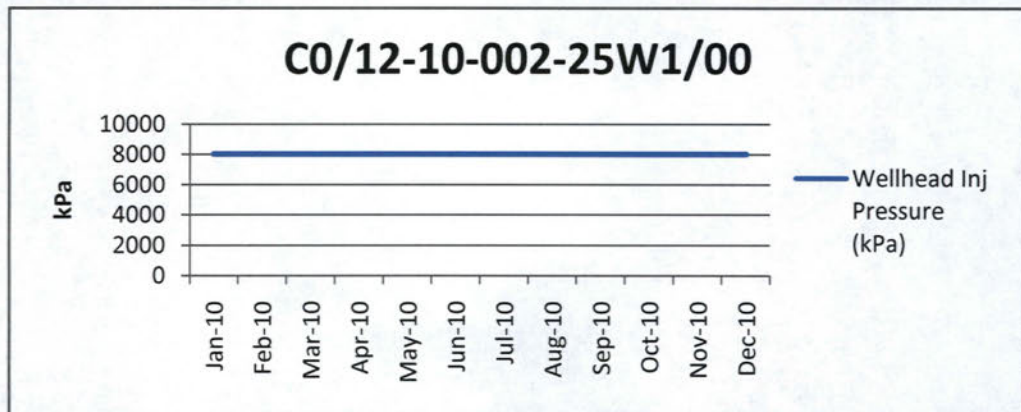
2010 Totals:

8424	1219.5
------	--------

# EOG Resources Canada Inc.

Waskada Unit No. 16  
2010 Injection Volumes

Well Location	Date	Hours On	H <sub>2</sub> O Inj Cal-d avg (m <sup>3</sup> /d)	H <sub>2</sub> O Inj Prd-d avg (m <sup>3</sup> /d)	Monthly Injected H <sub>2</sub> O (m <sup>3</sup> )	Wellhead Inj Pressure (kPa)
---------------	------	----------	--	--	---	--------------------------------



C0/12-10-002-25W1/00

Jan-10	312	3.9	9.3	121.41	8000
Feb-10	651	9.4	9.7	262.52	8000
Mar-10	744	8.5	8.5	264.52	8000
Apr-10	720	8.9	8.9	267.06	8000
May-10	744	8.9	8.9	275.34	8000
Jun-10	720	8.4	8.4	253.28	8000
Jul-10	744	7.5	7.5	232.36	8000
Aug-10	744	7.5	7.5	231.24	8000
Sep-10	720	7.7	7.7	229.75	8000
Oct-10	744	7.1	7.1	219.09	8000
Nov-10	720	4.7	4.7	140.55	8000
Dec-10	552	0.5	0.7	16.59	8000

2010 Totals:

**8115**

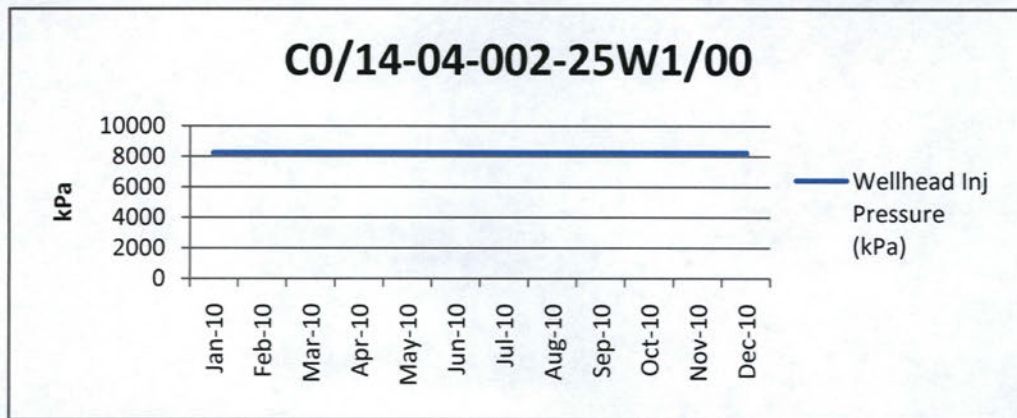
**2513.7**



# EOG Resources Canada Inc.

Waskada Unit No. 16  
2010 Injection Volumes

Well Location	Date	Hours On	H <sub>2</sub> O Inj Cal-d avg (m <sup>3</sup> /d)	H <sub>2</sub> O Inj Prd-d avg (m <sup>3</sup> /d)	Monthly Injected H <sub>2</sub> O (m <sup>3</sup> )	Wellhead Inj Pressure (kPa)
---------------	------	----------	--	--	---	--------------------------------



C0/14-04-002-25W1/00

Jan-10	456	2.9	4.8	90.93	8200
Feb-10	672	5.1	5.1	142.09	8200
Mar-10	744	5.1	5.1	158.39	8200
Apr-10	720	5.1	5.1	152.48	8200
May-10	744	5.1	5.1	157.56	8200
Jun-10	720	5.1	5.1	152.24	8200
Jul-10	604	4.3	5.3	133.34	8200
Aug-10	16	0.1	6.6	4.38	8200
Sep-10	96	0.7	5.1	20.28	8200
Oct-10	672	4.7	5.2	146.15	8200
Nov-10	624	4.8	5.6	144.46	8200
Dec-10	648	8.7	9.9	268.40	8200

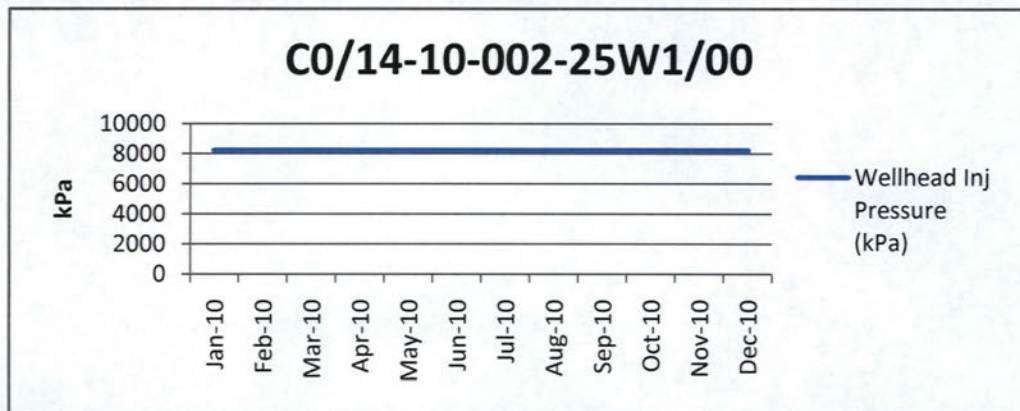
2010 Totals:

6716	1570.7
------	--------

# EOG Resources Canada Inc.

Waskada Unit No. 16  
2010 Injection Volumes

Well Location	Date	Hours On	H <sub>2</sub> O Inj Cal-d avg (m <sup>3</sup> /d)	H <sub>2</sub> O Inj Prd-d avg (m <sup>3</sup> /d)	Monthly Injected H <sub>2</sub> O (m <sup>3</sup> )	Wellhead Inj Pressure (kPa)
---------------	------	----------	--	--	---	--------------------------------



C0/14-10-002-25W1/00

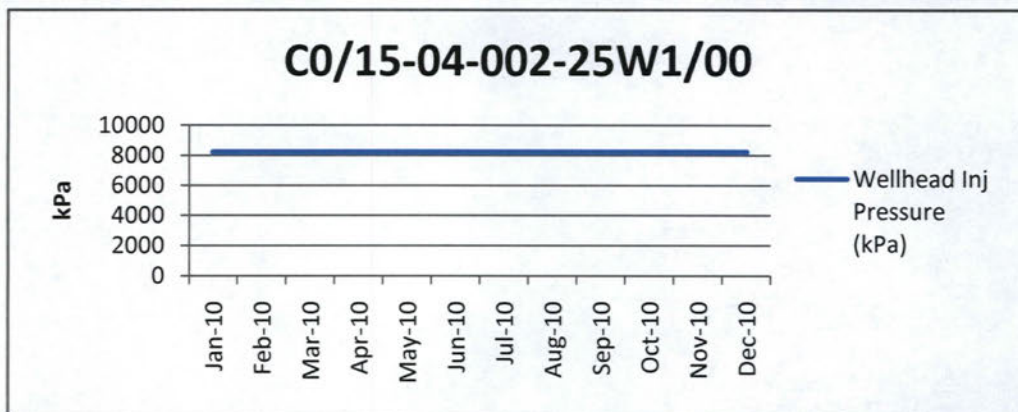
Jan-10	456	4.7	7.6	144.92	8200
Feb-10	672	6.9	6.9	194.53	8200
Mar-10	744	6.4	6.4	198.28	8200
Apr-10	720	5.9	5.9	176.41	8200
May-10	744	5.8	5.8	178.88	8200
Jun-10	720	5.4	5.4	160.90	8200
Jul-10	744	5.2	5.2	160.04	8200
Aug-10	744	4.7	4.7	144.59	8200
Sep-10	720	4.3	4.3	129.18	8200
Oct-10	744	4.0	4.0	125.26	8200
Nov-10	720	4.6	4.6	138.85	8200
Dec-10	744	5.6	5.6	173.37	8200
2010 Totals:	8472			1925.2	



# EOG Resources Canada Inc.

Waskada Unit No. 16  
2010 Injection Volumes

Well Location	Date	Hours On	H <sub>2</sub> O Inj Cal-d avg (m <sup>3</sup> /d)	H <sub>2</sub> O Inj Prd-d avg (m <sup>3</sup> /d)	Monthly Injected H <sub>2</sub> O (m <sup>3</sup> )	Wellhead Inj Pressure (kPa)
---------------	------	----------	--	--	---	--------------------------------



C0/15-04-002-25W1/00

Jan-10	432	1.4	2.4	42.65	8200
Feb-10	672	1.9	1.9	52.98	8200
Mar-10	720	1.8	1.9	55.85	8200
Apr-10	720	1.7	1.7	49.55	8200
May-10	672	1.7	1.8	51.70	8200
Jun-10	720	1.3	1.3	38.68	8200
Jul-10	744	1.1	1.1	35.38	8200
Aug-10	744	1.3	1.3	40.55	8200
Sep-10	720	1.6	1.6	48.46	8200
Oct-10	744	1.3	1.3	39.22	8200
Nov-10	720	0.8	0.8	24.27	8200
Dec-10	744	1.2	1.2	37.59	8200

2010 Totals:

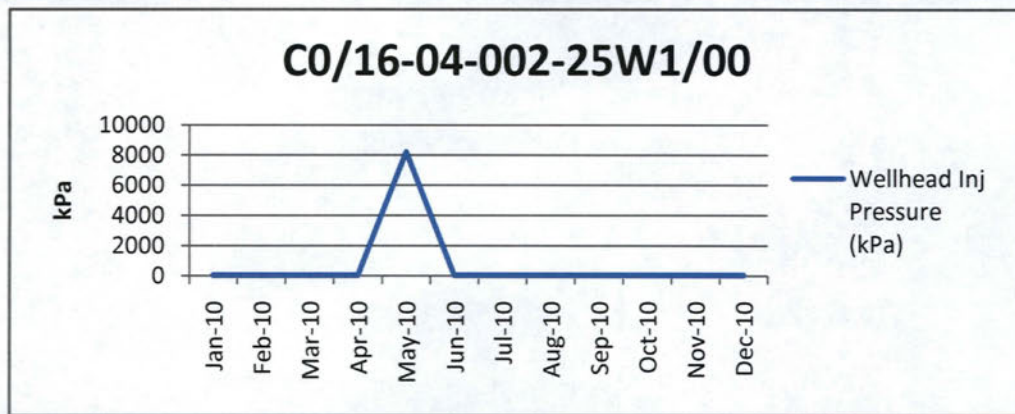
8352

516.9

# EOG Resources Canada Inc.

Waskada Unit No. 16  
2010 Injection Volumes

Well Location	Date	Hours On	H <sub>2</sub> O Inj Cal-d avg (m <sup>3</sup> /d)	H <sub>2</sub> O Inj Prd-d avg (m <sup>3</sup> /d)	Monthly Injected H <sub>2</sub> O (m <sup>3</sup> )	Wellhead Inj Pressure (kPa)
---------------	------	----------	--	--	---	--------------------------------



C0/16-04-002-25W1/00

Jan-10	0	0.0	0.0	0.00	0
Feb-10	0	0.0	0.0	0.00	0
Mar-10	0	0.0	0.0	0.00	0
Apr-10	0	0.0	0.0	0.00	0
May-10	72	0.3	3.5	10.50	8200
Jun-10	0	0.0	0.0	0.00	0
Jul-10	0	0.0	0.0	0.00	0
Aug-10	0	0.0	0.0	0.00	0
Sep-10	0	0.0	0.0	0.00	0
Oct-10	0	0.0	0.0	0.00	0
Nov-10	0	0.0	0.0	0.00	0
Dec-10	0	0.0	0.0	0.00	0

2010 Totals:

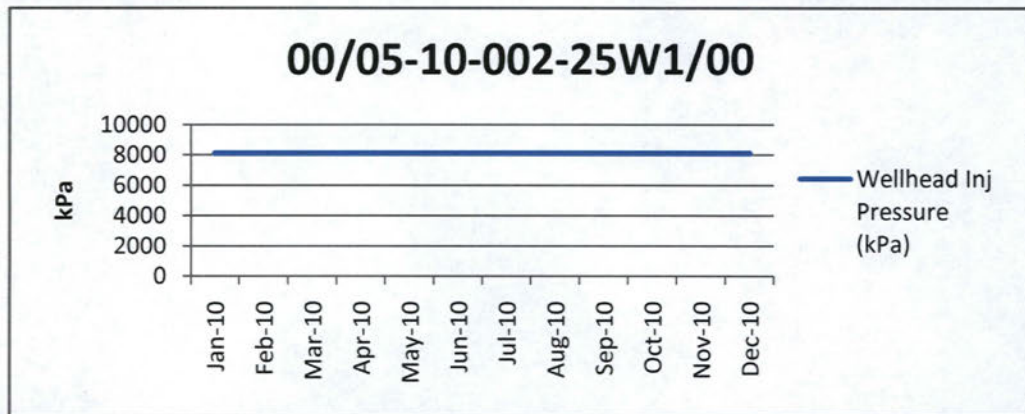
72	10.5
----	------



# EOG Resources Canada Inc.

Waskada Unit No. 16  
2010 Injection Volumes

Well Location	Date	Hours On	H <sub>2</sub> O Inj Cal-d avg (m <sup>3</sup> /d)	H <sub>2</sub> O Inj Prd-d avg (m <sup>3</sup> /d)	Monthly Injected H <sub>2</sub> O (m <sup>3</sup> )	Wellhead Inj Pressure (kPa)
---------------	------	----------	--	--	---	--------------------------------



00/05-10-002-25W1/00

Jan-10	744	161.0	161.0	4990.90	8100
Feb-10	672	253.9	253.9	7110.40	8100
Mar-10	744	317.7	317.7	9848.50	8100
Apr-10	720	266.3	266.3	7990.36	8100
May-10	744	252.7	252.7	7834.79	8100
Jun-10	720	237.2	237.2	7115.98	8100
Jul-10	744	226.7	226.7	7028.29	8100
Aug-10	744	264.5	264.5	8199.88	8100
Sep-10	720	264.9	264.9	7947.77	8100
Oct-10	744	261.3	261.3	8099.73	8100
Nov-10	720	314.6	314.6	9437.33	8100
Dec-10	744	318.3	318.3	9867.83	8100

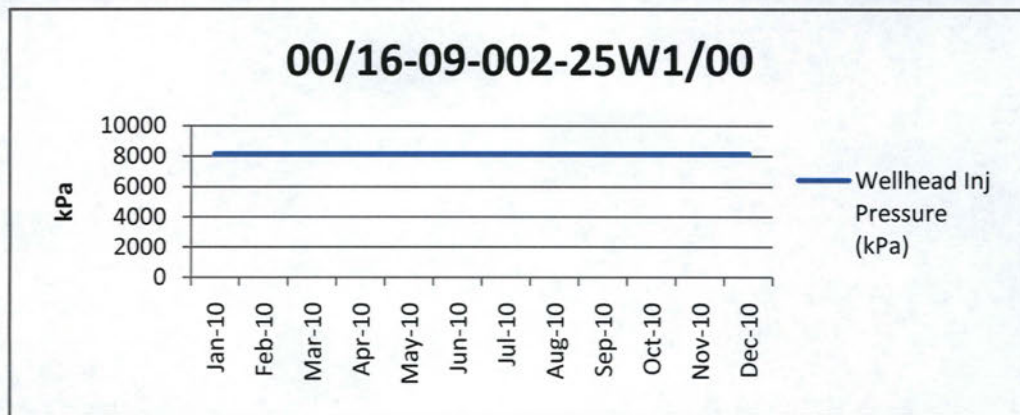
2010 Totals:

8760.0	95471.8
--------	---------

# EOG Resources Canada Inc.

Waskada Unit No. 16  
2010 Injection Volumes

Well Location	Date	Hours On	H <sub>2</sub> O Inj Cal-d avg (m <sup>3</sup> /d)	H <sub>2</sub> O Inj Prd-d avg (m <sup>3</sup> /d)	Monthly Injected H <sub>2</sub> O (m <sup>3</sup> )	Wellhead Inj Pressure (kPa)
---------------	------	----------	--	--	---	--------------------------------



00/16-09-002-25W1/00

Jan-10	744	36.9	36.9	1144.05	8100
Feb-10	672	44.9	44.9	1257.35	8100
Mar-10	744	72.8	72.8	2258.15	8100
Apr-10	720	83.0	83.0	2489.59	8100
May-10	744	83.5	83.5	2588.53	8100
Jun-10	720	79.0	79.0	2369.79	8100
Jul-10	744	76.0	76.0	2357.08	8100
Aug-10	744	82.2	82.2	2547.08	8100
Sep-10	720	82.8	82.8	2485.26	8100
Oct-10	744	81.2	81.2	2516.00	8100
Nov-10	720	102.2	102.2	3065.36	8100
Dec-10	744	100.9	100.9	3128.04	8100

2010 Totals:

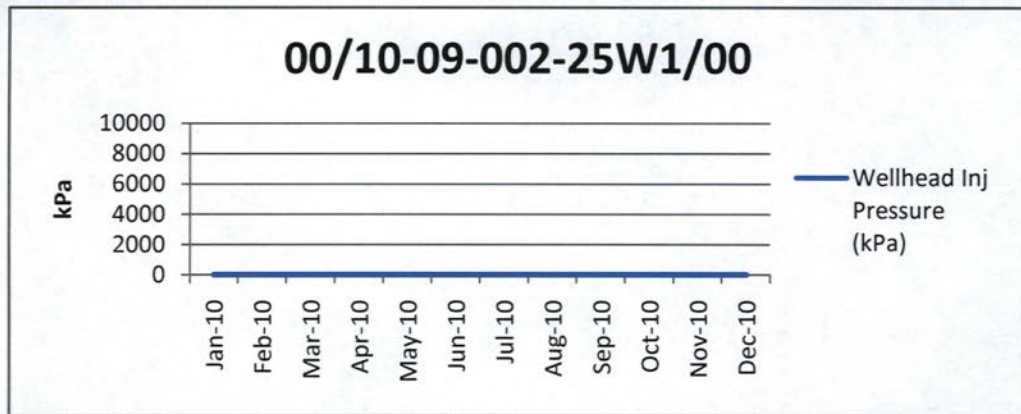
8760	28206.28
------	----------



# EOG Resources Canada Inc.

Waskada Unit No. 16  
2010 Injection Volumes

Well Location	Date	Hours On	H <sub>2</sub> O Inj Cal-d avg (m <sup>3</sup> /d)	H <sub>2</sub> O Inj Prd-d avg (m <sup>3</sup> /d)	Monthly Injected H <sub>2</sub> O (m <sup>3</sup> )	Wellhead Inj Pressure (kPa)
---------------	------	----------	--	--	---	--------------------------------



00/10-09-002-25W1/00

Jan-10	0	0.0	0.0	0.00	0
Feb-10	0	0.0	0.0	0.00	0
Mar-10	0	0.0	0.0	0.00	0
Apr-10	0	0.0	0.0	0.00	0
May-10	0	0.0	0.0	0.00	0
Jun-10	0	0.0	0.0	0.00	0
Jul-10	0	0.0	0.0	0.00	0
Aug-10	0	0.0	0.0	0.00	0
Sep-10	0	0.0	0.0	0.00	0
Oct-10	0	0.0	0.0	0.00	0
Nov-10	0	0.0	0.0	0.00	0
Dec-10	0	0.0	0.0	0.00	0

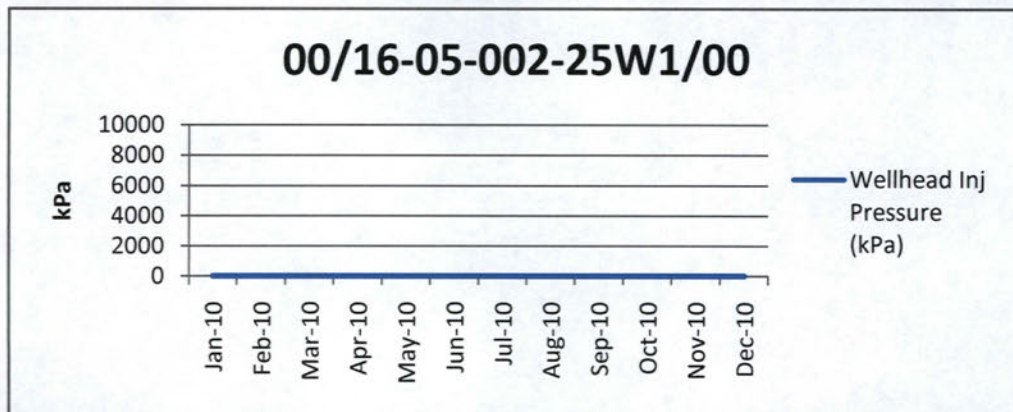
2010 Totals:

0	0.0
---	-----

# EOG Resources Canada Inc.

Waskada Unit No. 16  
2010 Injection Volumes

Well Location	Date	Hours On	H <sub>2</sub> O Inj Cal-d avg (m <sup>3</sup> /d)	H <sub>2</sub> O Inj Prd-d avg (m <sup>3</sup> /d)	Monthly Injected H <sub>2</sub> O (m <sup>3</sup> )	Wellhead Inj Pressure (kPa)
---------------	------	----------	--	--	---	--------------------------------



00/16-05-002-25W1/00

Jan-10	0	0.0	0.0	0.00	0
Feb-10	0	0.0	0.0	0.00	0
Mar-10	0	0.0	0.0	0.00	0
Apr-10	0	0.0	0.0	0.00	0
May-10	0	0.0	0.0	0.00	0
Jun-10	0	0.0	0.0	0.00	0
Jul-10	0	0.0	0.0	0.00	0
Aug-10	0	0.0	0.0	0.00	0
Sep-10	0	0.0	0.0	0.00	0
Oct-10	0	0.0	0.0	0.00	0
Nov-10	0	0.0	0.0	0.00	0
Dec-10	0	0.0	0.0	0.00	0

2010 Totals:

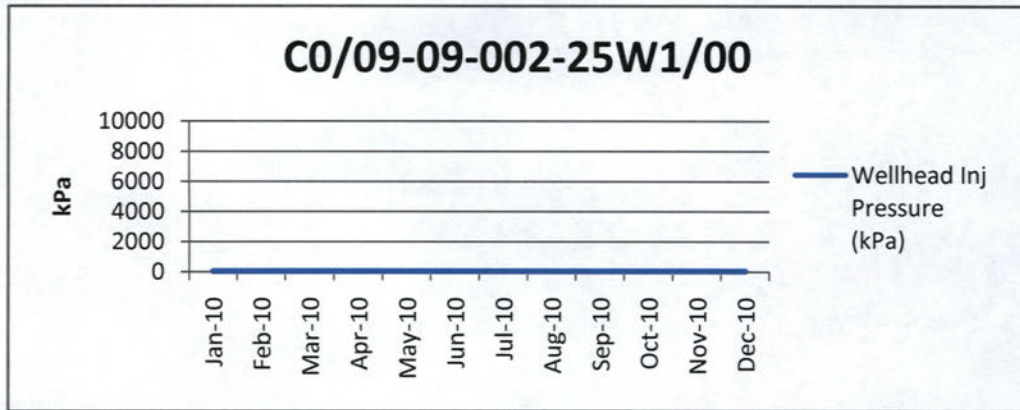
0	0.0
---	-----



# EOG Resources Canada Inc.

Waskada Unit No. 16  
2010 Injection Volumes

Well Location	Date	Hours On	H <sub>2</sub> O Inj Cal-d avg (m <sup>3</sup> /d)	H <sub>2</sub> O Inj Prd-d avg (m <sup>3</sup> /d)	Monthly Injected H <sub>2</sub> O (m <sup>3</sup> )	Wellhead Inj Pressure (kPa)
---------------	------	----------	--	--	---	--------------------------------



C0/09-09-002-25W1/00

Jan-10	0	0.0	0.0	0.00	0
Feb-10	0	0.0	0.0	0.00	0
Mar-10	0	0.0	0.0	0.00	0
Apr-10	0	0.0	0.0	0.00	0
May-10	0	0.0	0.0	0.00	0
Jun-10	0	0.0	0.0	0.00	0
Jul-10	0	0.0	0.0	0.00	0
Aug-10	0	0.0	0.0	0.00	0
Sep-10	0	0.0	0.0	0.00	0
Oct-10	0	0.0	0.0	0.00	0
Nov-10	0	0.0	0.0	0.00	0
Dec-10	0	0.0	0.0	0.00	0

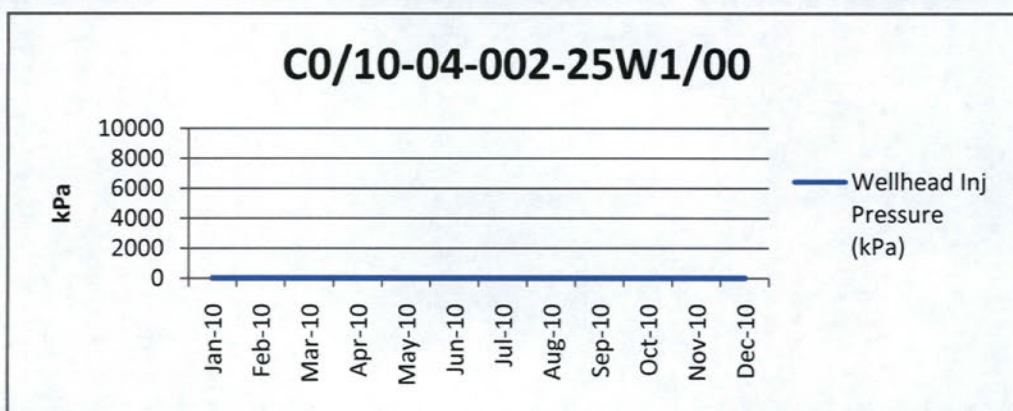
2010 Totals:

0	0.0
---	-----

# EOG Resources Canada Inc.

Waskada Unit No. 16  
2010 Injection Volumes

Well Location	Date	Hours On	H <sub>2</sub> O Inj Cal-d avg (m <sup>3</sup> /d)	H <sub>2</sub> O Inj Prd-d avg (m <sup>3</sup> /d)	Monthly Injected H <sub>2</sub> O (m <sup>3</sup> )	Wellhead Inj Pressure (kPa)
---------------	------	----------	--	--	---	--------------------------------



C0/10-04-002-25W1/00

Jan-10	0	0.0	0.0	0.00	0
Feb-10	0	0.0	0.0	0.00	0
Mar-10	0	0.0	0.0	0.00	0
Apr-10	0	0.0	0.0	0.00	0
May-10	0	0.0	0.0	0.00	0
Jun-10	0	0.0	0.0	0.00	0
Jul-10	0	0.0	0.0	0.00	0
Aug-10	0	0.0	0.0	0.00	0
Sep-10	0	0.0	0.0	0.00	0
Oct-10	0	0.0	0.0	0.00	0
Nov-10	0	0.0	0.0	0.00	0
Dec-10	0	0.0	0.0	0.00	0

2010 Totals:

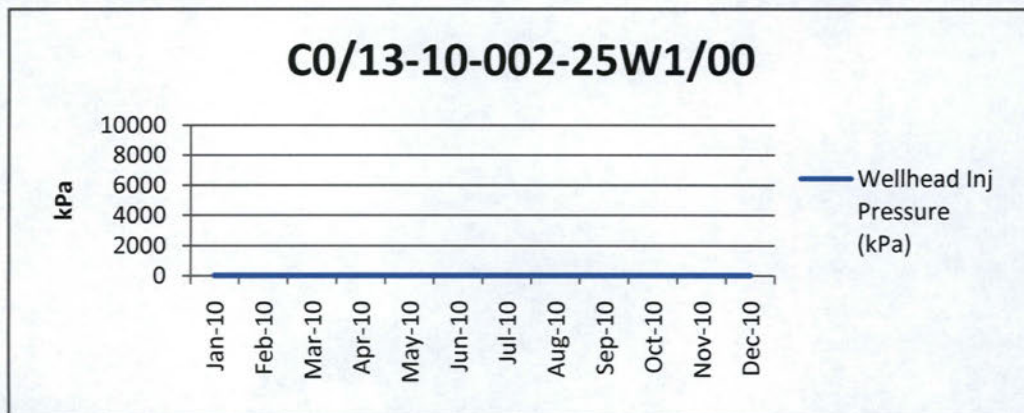
0	0.0
---	-----



# EOG Resources Canada Inc.

Waskada Unit No. 16  
2010 Injection Volumes

Well Location	Date	Hours On	H <sub>2</sub> O Inj Cal-d avg (m <sup>3</sup> /d)	H <sub>2</sub> O Inj Prd-d avg (m <sup>3</sup> /d)	Monthly Injected H <sub>2</sub> O (m <sup>3</sup> )	Wellhead Inj Pressure (kPa)
---------------	------	----------	--	--	---	--------------------------------



C0/13-10-002-25W1/00

Jan-10	0	0.0	0.0	0.00	0
Feb-10	0	0.0	0.0	0.00	0
Mar-10	0	0.0	0.0	0.00	0
Apr-10	0	0.0	0.0	0.00	0
May-10	0	0.0	0.0	0.00	0
Jun-10	0	0.0	0.0	0.00	0
Jul-10	0	0.0	0.0	0.00	0
Aug-10	0	0.0	0.0	0.00	0
Sep-10	0	0.0	0.0	0.00	0
Oct-10	0	0.0	0.0	0.00	0
Nov-10	0	0.0	0.0	0.00	0
Dec-10	0	0.0	0.0	0.00	0

2010 Totals:

0	0.0
---	-----

# EOG Resources Canada Inc.

Waskada Unit No. 16

2010 Injection Volumes

Well Location	Date	Hours On	H <sub>2</sub> O Inj Cal-d avg (m <sup>3</sup> /d)	H <sub>2</sub> O Inj Prd-d avg (m <sup>3</sup> /d)	Monthly Injected H <sub>2</sub> O (m <sup>3</sup> )	Wellhead Inj Pressure (kPa)
---------------	------	----------	--	--	---	--------------------------------

Unit No. 16 Total:

Jan-10	8448.00	242.7	448.8	7522.50
Feb-10	11379.00	375.4	465.6	10512.50
Mar-10	12072.00	461.9	597.8	14319.00
Apr-10	11208.00	417.7	536.7	12532.40
May-10	11904.00	403.6	504.4	12510.20
Jun-10	10872.00	376.0	473.2	11281.20
Jul-10	11314.00	362.5	452.9	11237.50
Aug-10	12016.00	405.3	451.7	12562.90
Sep-10	12192.00	407.3	433.0	12219.20
Oct-10	13320.00	403.8	406.0	12518.20
Nov-10	12864.00	474.8	478.3	14242.50
Dec-10	12912.00	479.7	497.5	14870.00

2010 Group Totals:

140,501.00

146,328.10

Unit No. 16 Total:

1984	0.00	0.00	0.00	0.00
1985	0.00	0.00	0.00	0.00
1986	0.00	0.00	0.00	0.00
1987	0.00	54.2	0.00	19770.30
1988	0.00	51.7	0.00	18857.10
1989	0.00	99.0	0.00	36118.80
1990	0.00	105.5	0.00	38515.30
1991	0.00	108.6	0.00	39652.50
1992	0.00	52.0	0.00	18965.80
1993	0.00	45.3	0.00	16521.00
1994	0.00	51.7	0.00	18862.30
1995	0.00	106.8	0.00	38998.70
1996	0.00	99.9	0.00	36447.10
1997	0.00	97.9	0.00	35740.40
1998	0.00	110.9	0.00	40469.70
1999	0.00	102.3	0.00	37339.40
2000	0.00	38.6	0.00	14072.80
2001	0.00	77.3	0.00	28196.30
2002	0.00	242.8	0.00	88618.60
2003	0.00	182.2	0.00	66491.40
2004	0.00	140.8	0.00	51375.10
2005	0.00	176.2	0.00	64324.30
2006	0.00	199.7	0.00	72897.00
2007	0.00	300.1	0.00	109531.30
2008	0.00	338.3	0.00	123487.80
2009	0.00	289.6	0.00	105691.10
2010	0.00	400.9	0.00	146328.10

Group Totals:

0.00

1,267,272.20



## Table 4

# EOG Resources Canada Inc.

Waskada Unit No. 16  
2010 Production Volumes

Well Location	Date	Hours On	Monthly Produced Oil (m³)	Oil Cal-d (m³/d)	Oil Prd-d (m³/d)	Monthly Produced H₂O (m³)	H₂O Cal-d (m³/d)	H₂O Prd-d (m³/d)	WOR (E1m³/m³)	
100/02-09-002-25W1/00			8,760	565.5	1.55	1.55	67.3	0.18	0.18	1.19
	2010-01	744	60.50	1.95	1.95	6.90	0.22	0.22	1.14	
	2010-02	672	49.70	1.78	1.78	5.80	0.21	0.19	1.17	
	2010-03	744	76.90	2.48	2.48	8.90	0.29	0.29	1.16	
	2010-04	720	55.70	1.86	1.86	6.30	0.21	0.20	1.13	
	2010-05	744	47.50	1.53	1.53	5.70	0.18	0.18	1.20	
	2010-06	720	16.30	0.54	0.54	2.10	0.07	0.07	1.29	
	2010-07	744	37.10	1.20	1.20	4.40	0.14	0.14	1.19	
	2010-08	744	45.20	1.46	1.46	5.20	0.17	0.17	1.15	
	2010-09	720	45.30	1.51	1.51	5.30	0.18	0.17	1.17	
	2010-10	744	49.50	1.60	1.60	5.70	0.18	0.18	1.15	
	2010-11	720	41.00	1.37	1.37	5.60	0.19	0.18	1.37	
	2010-12	744	40.80	1.32	1.32	5.40	0.17	0.17	1.32	
100/03-04-002-25W1/00			8,760	209.3	0.57	0.57	1.9	0.01	0.01	0.09
	2010-01	744	30.90	1.00	1.00	0.30	0.01	0.01	0.10	
	2010-02	672	23.80	0.85	0.85	0.30	0.01	0.01	0.13	
	2010-03	744	26.60	0.86	0.86	0.50	0.02	0.02	0.19	
	2010-04	720	17.80	0.59	0.59	0.20	0.01	0.01	0.11	
	2010-05	744	18.00	0.58	0.58	0.20	0.01	0.01	0.11	
	2010-06	720	14.20	0.47	0.47	0.20	0.01	0.01	0.14	
	2010-07	744	14.20	0.46	0.46	0.20	0.01	0.01	0.14	
	2010-08	744	13.70	0.44	0.44	0.00	0.00	0.00	0.00	
	2010-09	720	13.70	0.46	0.46	0.00	0.00	0.00	0.00	
	2010-10	744	14.60	0.47	0.47	0.00	0.00	0.00	0.00	
	2010-11	720	12.40	0.41	0.41	0.00	0.00	0.00	0.00	
	2010-12	744	9.40	0.30	0.30	0.00	0.00	0.00	0.00	
100/03-09-002-25W1/00			8,184	309.2	0.85	0.79	1286	3.52	3.29	41.59
	2010-01	744	34.10	1.10	1.10	83.50	2.69	2.69	24.49	
	2010-02	672	29.70	1.06	1.06	71.20	2.54	2.30	23.97	
	2010-03	696	42.50	1.37	1.28	103.60	3.34	3.13	24.38	
	2010-04	720	40.20	1.34	1.34	94.00	3.13	3.03	23.38	
	2010-05	744	37.00	1.19	1.19	106.80	3.45	3.45	28.86	
	2010-06	576	16.30	0.54	0.43	107.40	3.58	2.77	65.89	
	2010-07	744	21.60	0.70	0.70	134.90	4.35	4.35	62.45	
	2010-08	720	20.60	0.66	0.64	130.80	4.22	4.08	63.50	
	2010-09	720	20.20	0.67	0.67	133.20	4.44	4.30	65.94	
	2010-10	744	20.10	0.65	0.65	124.80	4.03	4.03	62.09	
	2010-11	720	18.90	0.63	0.63	139.40	4.65	4.50	73.76	
	2010-12	384	8.00	0.26	0.13	56.40	1.82	0.94	70.50	



# EOG Resources Canada Inc.

Waskada Unit No. 16  
2010 Production Volumes

Well Location	Date	Hours On	Monthly Produced Oil (m³)	Oil Cal-d (m³/d)	Oil Prd-d (m³/d)	Monthly Produced H₂O (m³)	H₂O Cal-d (m³/d)	H₂O Prd-d (m³/d)	WOR (E1m³/m³)	
100/04-04-002-25W1/00			8,760	138.2	0.38	0.38	146.4	0.40	0.40	10.59
	2010-01	744	12.70	0.41	0.41	13.40	0.43	0.43	10.55	
	2010-02	672	11.50	0.41	0.41	11.90	0.43	0.38	10.35	
	2010-03	744	10.30	0.33	0.33	10.60	0.34	0.34	10.29	
	2010-04	720	10.40	0.35	0.35	10.50	0.35	0.34	10.10	
	2010-05	744	14.90	0.48	0.48	15.50	0.50	0.50	10.40	
	2010-06	720	15.50	0.52	0.52	16.70	0.56	0.54	10.77	
	2010-07	744	10.20	0.33	0.33	10.40	0.34	0.34	10.20	
	2010-08	744	10.70	0.35	0.35	11.00	0.35	0.35	10.28	
	2010-09	720	10.60	0.35	0.35	11.40	0.38	0.37	10.75	
	2010-10	744	10.70	0.35	0.35	10.80	0.35	0.35	10.09	
	2010-11	720	10.30	0.34	0.34	12.10	0.40	0.39	11.75	
	2010-12	744	10.40	0.34	0.34	12.10	0.39	0.39	11.63	
100/04-09-002-25W1/02			8,736	156.6	0.43	0.43	2366.3	6.48	6.47	151.10
	2010-01	744	16.10	0.52	0.52	171.70	5.54	5.54	106.65	
	2010-02	672	18.20	0.65	0.65	189.80	6.78	6.12	104.29	
	2010-03	744	26.70	0.86	0.86	283.30	9.14	9.14	106.10	
	2010-04	696	16.70	0.56	0.54	186.70	6.22	5.82	111.80	
	2010-05	744	14.00	0.45	0.45	202.80	6.54	6.54	144.86	
	2010-06	720	9.20	0.31	0.31	190.20	6.34	6.14	206.74	
	2010-07	744	9.30	0.30	0.30	181.40	5.85	5.85	195.05	
	2010-08	744	9.40	0.30	0.30	183.90	5.93	5.93	195.64	
	2010-09	720	8.70	0.29	0.29	176.90	5.90	5.71	203.33	
	2010-10	744	9.80	0.32	0.32	186.40	6.01	6.01	190.20	
	2010-11	720	9.20	0.31	0.31	207.90	6.93	6.71	225.98	
	2010-12	744	9.30	0.30	0.30	205.30	6.62	6.62	220.75	
100/04-10-002-25W1/00			8,640	218.2	0.60	0.59	19.8	0.05	0.05	0.91
	2010-01	744	19.40	0.63	0.63	2.10	0.07	0.07	1.08	
	2010-02	672	17.40	0.62	0.62	2.00	0.07	0.06	1.15	
	2010-03	624	18.30	0.59	0.50	2.00	0.06	0.05	1.09	
	2010-04	720	19.10	0.64	0.64	2.10	0.07	0.07	1.10	
	2010-05	744	18.10	0.58	0.58	1.90	0.06	0.06	1.05	
	2010-06	720	17.80	0.59	0.59	1.90	0.06	0.06	1.07	
	2010-07	744	18.80	0.61	0.61	2.10	0.07	0.07	1.12	
	2010-08	744	18.20	0.59	0.59	2.00	0.06	0.06	1.10	
	2010-09	720	16.90	0.56	0.56	0.90	0.03	0.03	0.53	
	2010-10	744	18.20	0.59	0.59	0.90	0.03	0.03	0.49	
	2010-11	720	16.80	0.56	0.56	0.90	0.03	0.03	0.54	
	2010-12	744	19.20	0.62	0.62	1.00	0.03	0.03	0.52	



# EOG Resources Canada Inc.

Waskada Unit No. 16  
2010 Production Volumes

Well Location	Date	Hours On	Monthly Produced Oil (m³)	Oil Cal-d (m³/d)	Oil Prd-d (m³/d)	Monthly Produced H₂O (m³)	H₂O Cal-d (m³/d)	H₂O Prd-d (m³/d)	WOR (E1m³/m³)	
100/06-04-002-25W1/00			8,760	96.1	0.26	0.26	909.7	2.49	2.49	94.66
	2010-01	744	6.60	0.21	0.21	62.40	2.01	2.01	94.55	
	2010-02	672	6.40	0.23	0.23	59.00	2.11	1.90	92.19	
	2010-03	744	9.80	0.32	0.32	94.20	3.04	3.04	96.12	
	2010-04	720	7.30	0.24	0.24	65.60	2.19	2.12	89.86	
	2010-05	744	8.30	0.27	0.27	76.90	2.48	2.48	92.65	
	2010-06	720	8.30	0.28	0.28	78.90	2.63	2.55	95.06	
	2010-07	744	8.20	0.26	0.26	73.10	2.36	2.36	89.15	
	2010-08	744	8.50	0.27	0.27	76.60	2.47	2.47	90.12	
	2010-09	720	8.00	0.27	0.27	77.00	2.57	2.48	96.25	
	2010-10	744	8.60	0.28	0.28	77.80	2.51	2.51	90.47	
	2010-11	720	7.90	0.26	0.26	83.00	2.77	2.68	105.06	
	2010-12	744	8.20	0.26	0.26	85.20	2.75	2.75	103.90	
100/07-09-002-25W1/00			8,688	188	0.52	0.51	462.9	1.27	1.26	24.62
	2010-01	744	17.70	0.57	0.57	43.70	1.41	1.41	24.69	
	2010-02	672	15.90	0.57	0.57	37.60	1.34	1.21	23.65	
	2010-03	696	21.70	0.70	0.65	52.40	1.69	1.58	24.15	
	2010-04	720	16.20	0.54	0.54	37.60	1.25	1.21	23.21	
	2010-05	744	16.00	0.52	0.52	38.60	1.25	1.25	24.13	
	2010-06	696	14.40	0.48	0.46	35.70	1.19	1.11	24.79	
	2010-07	744	15.20	0.49	0.49	36.00	1.16	1.16	23.68	
	2010-08	744	15.50	0.50	0.50	37.40	1.21	1.21	24.13	
	2010-09	720	13.80	0.46	0.46	34.90	1.16	1.13	25.29	
	2010-10	744	14.80	0.48	0.48	35.30	1.14	1.14	23.85	
	2010-11	720	13.60	0.45	0.45	37.90	1.26	1.22	27.87	
	2010-12	744	13.20	0.43	0.43	35.80	1.15	1.15	27.12	
100/08-09-002-25W1/00			8,400	105.5	0.29	0.28	258.6	0.71	0.68	24.51
	2010-01	456	8.00	0.26	0.16	20.30	0.65	0.40	25.38	
	2010-02	672	10.90	0.39	0.39	25.60	0.91	0.83	23.49	
	2010-03	672	11.70	0.38	0.34	28.20	0.91	0.82	24.10	
	2010-04	720	9.50	0.32	0.32	22.50	0.75	0.73	23.68	
	2010-05	744	9.70	0.31	0.31	23.50	0.76	0.76	24.23	
	2010-06	720	9.10	0.30	0.30	22.90	0.76	0.74	25.16	
	2010-07	744	8.70	0.28	0.28	20.70	0.67	0.67	23.79	
	2010-08	744	8.40	0.27	0.27	19.50	0.63	0.63	23.21	
	2010-09	720	7.80	0.26	0.26	19.10	0.64	0.62	24.49	
	2010-10	744	7.70	0.25	0.25	17.80	0.57	0.57	23.12	
	2010-11	720	7.40	0.25	0.25	20.90	0.70	0.67	28.24	
	2010-12	744	6.60	0.21	0.21	17.60	0.57	0.57	26.67	



# EOG Resources Canada Inc.

Waskada Unit No. 16  
2010 Production Volumes

Well Location	Date	Hours On	Monthly Produced Oil (m³)	Oil Cal-d (m³/d)	Oil Prd-d (m³/d)	Monthly Produced H <sub>2</sub> O (m³)	H <sub>2</sub> O Cal-d (m³/d)	H <sub>2</sub> O Prd-d (m³/d)	WOR (E1m³/m³)	
100/09-04-002-25W1/00			8,760	271.8	0.74	0.74	10.5	0.03	0.03	0.39
	2010-01	744	23.70	0.76	0.76	1.30	0.04	0.04	0.55	
	2010-02	672	26.10	0.93	0.93	1.40	0.05	0.05	0.54	
	2010-03	744	39.40	1.27	1.27	1.80	0.06	0.06	0.46	
	2010-04	720	25.00	0.83	0.83	0.80	0.03	0.03	0.32	
	2010-05	744	23.70	0.76	0.76	0.80	0.03	0.03	0.34	
	2010-06	720	24.40	0.81	0.81	0.70	0.02	0.02	0.29	
	2010-07	744	24.00	0.77	0.77	0.60	0.02	0.02	0.25	
	2010-08	744	19.50	0.63	0.63	0.60	0.02	0.02	0.31	
	2010-09	720	15.70	0.52	0.52	0.60	0.02	0.02	0.38	
	2010-10	744	16.30	0.53	0.53	0.60	0.02	0.02	0.37	
	2010-11	720	16.30	0.54	0.54	0.70	0.02	0.02	0.43	
	2010-12	744	17.70	0.57	0.57	0.60	0.02	0.02	0.34	
100/09-05-002-25W1/00			8,256	1068.4	2.93	2.76	284.8	0.78	0.74	2.67
	2010-01	744	93.10	3.00	3.00	24.60	0.79	0.79	2.64	
	2010-02	672	84.20	3.01	3.01	21.50	0.77	0.69	2.55	
	2010-03	744	124.90	4.03	4.03	32.60	1.05	1.05	2.61	
	2010-04	720	86.50	2.88	2.88	21.80	0.73	0.70	2.52	
	2010-05	744	79.20	2.55	2.55	20.70	0.67	0.67	2.61	
	2010-06	720	80.50	2.68	2.68	21.70	0.72	0.70	2.70	
	2010-07	744	87.60	2.83	2.83	22.30	0.72	0.72	2.55	
	2010-08	744	80.90	2.61	2.61	20.80	0.67	0.67	2.57	
	2010-09	216	22.70	0.76	0.23	6.00	0.20	0.06	2.64	
	2010-10	744	136.00	4.39	4.39	35.60	1.15	1.15	2.62	
	2010-11	720	98.70	3.29	3.29	29.50	0.98	0.95	2.99	
	2010-12	744	94.10	3.04	3.04	27.70	0.89	0.89	2.94	
100/09-09-002-25W1/00			8,760	81.2	0.22	0.22	773.9	2.12	2.12	95.31
	2010-01	744	5.00	0.16	0.16	47.10	1.52	1.52	94.20	
	2010-02	672	5.20	0.19	0.19	48.60	1.74	1.57	93.46	
	2010-03	744	8.90	0.29	0.29	83.90	2.71	2.71	94.27	
	2010-04	720	6.30	0.21	0.21	56.40	1.88	1.82	89.52	
	2010-05	744	7.50	0.24	0.24	70.40	2.27	2.27	93.87	
	2010-06	720	8.40	0.28	0.28	81.80	2.73	2.64	97.38	
	2010-07	744	7.80	0.25	0.25	70.20	2.26	2.26	90.00	
	2010-08	744	7.00	0.23	0.23	65.70	2.12	2.12	93.86	
	2010-09	720	6.50	0.22	0.22	64.10	2.14	2.07	98.62	
	2010-10	744	7.00	0.23	0.23	62.80	2.03	2.03	89.71	
	2010-11	720	6.00	0.20	0.20	64.20	2.14	2.07	107.00	
	2010-12	744	5.60	0.18	0.18	58.70	1.89	1.89	104.82	



# EOG Resources Canada Inc.

Waskada Unit No. 16  
2010 Production Volumes

Well Location	Date	Hours On	Monthly Produced Oil (m³)	Oil Cal-d (m³/d)	Oil Prd-d (m³/d)	Monthly Produced H <sub>2</sub> O (m³)	H <sub>2</sub> O Cal-d (m³/d)	H <sub>2</sub> O Prd-d (m³/d)	WOR (E1m³/m³)	
100/10-04-002-25W1/00			8,760	744.4	2.04	2.04	16.1	0.04	0.04	0.22
	2010-01	744	58.30	1.88	1.88	1.30	0.04	0.04	0.22	
	2010-02	672	58.00	2.07	2.07	1.20	0.04	0.04	0.21	
	2010-03	744	89.90	2.90	2.90	1.80	0.06	0.06	0.20	
	2010-04	720	63.00	2.10	2.10	1.30	0.04	0.04	0.21	
	2010-05	744	61.80	1.99	1.99	1.20	0.04	0.04	0.19	
	2010-06	720	58.10	1.94	1.94	1.40	0.05	0.05	0.24	
	2010-07	744	58.80	1.90	1.90	1.20	0.04	0.04	0.20	
	2010-08	744	61.30	1.98	1.98	1.30	0.04	0.04	0.21	
	2010-09	720	57.50	1.92	1.92	1.20	0.04	0.04	0.21	
	2010-10	744	59.80	1.93	1.93	1.30	0.04	0.04	0.22	
	2010-11	720	57.10	1.90	1.90	1.50	0.05	0.05	0.26	
	2010-12	744	60.80	1.96	1.96	1.40	0.05	0.05	0.23	
100/12-04-002-25W1/00			8,760	403.4	1.11	1.11	483.2	1.32	1.32	11.98
	2010-01	744	31.20	1.01	1.01	38.60	1.25	1.25	12.37	
	2010-02	672	31.50	1.13	1.13	38.00	1.36	1.23	12.06	
	2010-03	744	48.80	1.57	1.57	59.70	1.93	1.93	12.23	
	2010-04	720	29.80	0.99	0.99	34.90	1.16	1.13	11.71	
	2010-05	744	25.70	0.83	0.83	31.80	1.03	1.03	12.37	
	2010-06	720	28.40	0.95	0.95	35.90	1.20	1.16	12.64	
	2010-07	744	32.90	1.06	1.06	39.10	1.26	1.26	11.88	
	2010-08	744	37.10	1.20	1.20	44.90	1.45	1.45	12.10	
	2010-09	720	32.00	1.07	1.07	40.40	1.35	1.30	12.63	
	2010-10	744	36.50	1.18	1.18	37.90	1.22	1.22	10.38	
	2010-11	720	35.10	1.17	1.17	41.80	1.39	1.35	11.91	
	2010-12	744	34.40	1.11	1.11	40.20	1.30	1.30	11.69	
100/12-10-002-25W1/00			8,688	836.4	2.29	2.27	3131.7	8.58	8.51	37.44
	2010-01	744	76.20	2.46	2.46	284.10	9.16	9.16	37.28	
	2010-02	672	68.30	2.44	2.44	247.80	8.85	7.99	36.28	
	2010-03	720	102.50	3.31	3.20	378.00	12.19	11.80	36.88	
	2010-04	720	76.30	2.54	2.54	270.60	9.02	8.73	35.47	
	2010-05	744	70.00	2.26	2.26	259.40	8.37	8.37	37.06	
	2010-06	720	67.30	2.24	2.24	256.80	8.56	8.28	38.16	
	2010-07	744	68.80	2.22	2.22	248.30	8.01	8.01	36.09	
	2010-08	696	63.80	2.06	1.93	232.50	7.50	7.02	36.44	
	2010-09	720	62.60	2.09	2.09	238.00	7.93	7.68	38.02	
	2010-10	744	64.10	2.07	2.07	229.70	7.41	7.41	35.83	
	2010-11	720	60.50	2.02	2.02	255.60	8.52	8.25	42.25	
	2010-12	744	56.00	1.81	1.81	230.90	7.45	7.45	41.23	



# EOG Resources Canada Inc.

Waskada Unit No. 16  
2010 Production Volumes

Well Location	Date	Hours On	Monthly Produced Oil (m³)	Oil Cal-d (m³/d)	Oil Prd-d (m³/d)	Monthly Produced H₂O (m³)	H₂O Cal-d (m³/d)	H₂O Prd-d (m³/d)	WOR (E1m³/m³)	
100/13-04-002-25W1/02			8,760	426.8	1.17	1.17	194.4	0.53	0.53	4.55
	2010-01	744	35.20	1.14	1.14	16.00	0.52	0.52	4.55	
	2010-02	672	34.90	1.25	1.25	15.50	0.55	0.50	4.44	
	2010-03	744	58.50	1.89	1.89	26.30	0.85	0.85	4.50	
	2010-04	720	39.00	1.30	1.30	16.80	0.56	0.54	4.31	
	2010-05	744	33.60	1.08	1.08	15.10	0.49	0.49	4.49	
	2010-06	720	32.70	1.09	1.09	15.20	0.51	0.49	4.65	
	2010-07	744	36.00	1.16	1.16	15.80	0.51	0.51	4.39	
	2010-08	744	32.50	1.05	1.05	14.40	0.46	0.46	4.43	
	2010-09	720	30.40	1.01	1.01	14.20	0.47	0.46	4.67	
	2010-10	744	33.10	1.07	1.07	14.50	0.47	0.47	4.38	
	2010-11	720	31.00	1.03	1.03	15.80	0.53	0.51	5.10	
	2010-12	744	29.90	0.96	0.96	14.80	0.48	0.48	4.95	
100/13-10-002-25W1/00			8,712	665.2	1.82	1.81	62	0.17	0.17	0.93
	2010-01	744	62.40	2.01	2.01	5.70	0.18	0.18	0.91	
	2010-02	672	56.20	2.01	2.01	5.20	0.19	0.17	0.93	
	2010-03	720	82.70	2.67	2.58	7.70	0.25	0.24	0.93	
	2010-04	720	59.70	1.99	1.99	5.30	0.18	0.17	0.89	
	2010-05	744	59.60	1.92	1.92	5.50	0.18	0.18	0.92	
	2010-06	720	55.20	1.84	1.84	5.10	0.17	0.16	0.92	
	2010-07	744	38.00	1.23	1.23	3.50	0.11	0.11	0.92	
	2010-08	720	41.10	1.33	1.28	3.60	0.12	0.11	0.88	
	2010-09	720	54.10	1.80	1.80	5.10	0.17	0.16	0.94	
	2010-10	744	49.40	1.59	1.59	4.30	0.14	0.14	0.87	
	2010-11	720	54.30	1.81	1.81	5.70	0.19	0.18	1.05	
	2010-12	744	52.50	1.69	1.69	5.30	0.17	0.17	1.01	
100/14-04-002-25W1/00			8,424	271.2	0.74	0.71	124	0.34	0.33	4.57
	2010-01	624	10.70	0.35	0.29	4.90	0.16	0.13	4.58	
	2010-02	672	23.40	0.84	0.84	10.10	0.36	0.33	4.32	
	2010-03	744	38.00	1.23	1.23	16.80	0.54	0.54	4.42	
	2010-04	720	26.70	0.89	0.89	11.40	0.38	0.37	4.27	
	2010-05	744	16.20	0.52	0.52	7.40	0.24	0.24	4.57	
	2010-06	720	10.10	0.34	0.34	4.80	0.16	0.15	4.75	
	2010-07	744	8.00	0.26	0.26	3.70	0.12	0.12	4.63	
	2010-08	528	22.10	0.71	0.51	10.10	0.33	0.23	4.57	
	2010-09	720	28.90	0.96	0.96	13.40	0.45	0.43	4.64	
	2010-10	744	30.30	0.98	0.98	13.00	0.42	0.42	4.29	
	2010-11	720	29.00	0.97	0.97	14.60	0.49	0.47	5.03	
	2010-12	744	27.80	0.90	0.90	13.80	0.45	0.45	4.96	



# EOG Resources Canada Inc.

Waskada Unit No. 16  
2010 Production Volumes

Well Location	Date	Hours On	Monthly Produced Oil (m³)	Oil Cal-d (m³/d)	Oil Prd-d (m³/d)	Monthly Produced H <sub>2</sub> O (m³)	H <sub>2</sub> O Cal-d (m³/d)	H <sub>2</sub> O Prd-d (m³/d)	WOR (E1m³/m³)
100/14-10-002-25W1/00		8,424	143.9	0.39	0.38	21.4	0.06	0.06	1.49
	2010-01	744	13.50	0.44	0.44	1.80	0.06	0.06	1.33
	2010-02	672	12.60	0.45	0.45	1.50	0.05	0.05	1.19
	2010-03	720	18.90	0.61	0.59	2.10	0.07	0.07	1.11
	2010-04	720	13.50	0.45	0.45	1.60	0.05	0.05	1.19
	2010-05	696	12.10	0.39	0.37	1.60	0.05	0.05	1.32
	2010-06	720	12.00	0.40	0.40	1.40	0.05	0.05	1.17
	2010-07	744	12.20	0.39	0.39	1.40	0.05	0.05	1.15
	2010-08	480	7.80	0.25	0.16	0.90	0.03	0.02	1.15
	2010-09	720	10.70	0.36	0.36	1.90	0.06	0.06	1.78
	2010-10	744	11.20	0.36	0.36	2.50	0.08	0.08	2.23
	2010-11	720	10.00	0.33	0.33	2.40	0.08	0.08	2.40
	2010-12	744	9.40	0.30	0.30	2.30	0.07	0.07	2.45
100/15-05-002-25W1/00		7,992	257.7	0.71	0.64	18.9	0.05	0.05	0.73
	2010-01	744	27.40	0.88	0.88	3.20	0.10	0.10	1.17
	2010-02	672	21.30	0.76	0.76	2.40	0.09	0.08	1.13
	2010-03	744	40.80	1.32	1.32	4.60	0.15	0.15	1.13
	2010-04	720	22.30	0.74	0.74	2.60	0.09	0.08	1.17
	2010-05	744	21.40	0.69	0.69	2.60	0.08	0.08	1.21
	2010-06	336	9.40	0.31	0.15	1.20	0.04	0.02	1.28
	2010-07	360	11.20	0.36	0.17	0.00	0.00	0.00	0.00
	2010-08	744	29.00	0.94	0.94	0.00	0.00	0.00	0.00
	2010-09	720	22.30	0.74	0.74	0.00	0.00	0.00	0.00
	2010-10	744	22.70	0.73	0.73	0.00	0.00	0.00	0.00
	2010-11	720	15.20	0.51	0.51	1.10	0.04	0.04	0.72
	2010-12	744	14.70	0.47	0.47	1.20	0.04	0.04	0.82
100/15-09-002-25W1/00		8,760	315.1	0.86	0.86	7.3	0.02	0.02	0.23
	2010-01	744	27.50	0.89	0.89	0.60	0.02	0.02	0.22
	2010-02	672	26.30	0.94	0.94	0.60	0.02	0.02	0.23
	2010-03	744	33.80	1.09	1.09	0.60	0.02	0.02	0.18
	2010-04	720	24.90	0.83	0.83	0.60	0.02	0.02	0.24
	2010-05	744	25.20	0.81	0.81	0.60	0.02	0.02	0.24
	2010-06	720	24.80	0.83	0.83	0.60	0.02	0.02	0.24
	2010-07	744	26.50	0.85	0.85	0.60	0.02	0.02	0.23
	2010-08	744	26.90	0.87	0.87	0.60	0.02	0.02	0.22
	2010-09	720	25.20	0.84	0.84	0.60	0.02	0.02	0.24
	2010-10	744	26.10	0.84	0.84	0.60	0.02	0.02	0.23
	2010-11	720	25.00	0.83	0.83	0.70	0.02	0.02	0.28
	2010-12	744	22.90	0.74	0.74	0.60	0.02	0.02	0.26



# EOG Resources Canada Inc.

Waskada Unit No. 16  
2010 Production Volumes

Well Location	Date	Hours On	Monthly Produced Oil (m³)	Oil Cal-d (m³/d)	Oil Prd-d (m³/d)	Monthly Produced H <sub>2</sub> O (m³)	H <sub>2</sub> O Cal-d (m³/d)	H <sub>2</sub> O Prd-d (m³/d)	WOR (E1m³/m³)
100/16-04-002-25W1/00		8,760	199.7	0.55	0.55	24.8	0.07	0.07	1.24
	2010-01	744	17.00	0.55	0.55	2.00	0.06	0.06	1.18
	2010-02	672	17.40	0.62	0.62	2.10	0.08	0.07	1.21
	2010-03	744	26.40	0.85	0.85	3.40	0.11	0.11	1.29
	2010-04	720	17.60	0.59	0.59	2.10	0.07	0.07	1.19
	2010-05	744	15.70	0.51	0.51	2.00	0.06	0.06	1.27
	2010-06	720	14.70	0.49	0.49	1.80	0.06	0.06	1.22
	2010-07	744	14.60	0.47	0.47	1.50	0.05	0.05	1.03
	2010-08	744	15.80	0.51	0.51	1.90	0.06	0.06	1.20
	2010-09	720	14.60	0.49	0.49	1.90	0.06	0.06	1.30
	2010-10	744	16.20	0.52	0.52	1.90	0.06	0.06	1.17
	2010-11	720	15.20	0.51	0.51	2.20	0.07	0.07	1.45
	2010-12	744	14.50	0.47	0.47	2.00	0.06	0.06	1.38
102/05-09-002-25W1/00		8,760	211.9	0.58	0.58	119.7	0.33	0.33	5.65
	2010-01	744	14.60	0.47	0.47	8.30	0.27	0.27	5.68
	2010-02	672	15.40	0.55	0.55	8.50	0.30	0.27	5.52
	2010-03	744	23.20	0.75	0.75	12.90	0.42	0.42	5.56
	2010-04	720	15.00	0.50	0.50	8.10	0.27	0.26	5.40
	2010-05	744	19.60	0.63	0.63	11.00	0.35	0.35	5.61
	2010-06	720	16.30	0.54	0.54	9.60	0.32	0.31	5.89
	2010-07	744	22.30	0.72	0.72	12.00	0.39	0.39	5.38
	2010-08	744	22.50	0.73	0.73	12.40	0.40	0.40	5.51
	2010-09	720	19.70	0.66	0.66	11.20	0.37	0.36	5.69
	2010-10	744	15.40	0.50	0.50	8.20	0.26	0.26	5.32
	2010-11	720	14.10	0.47	0.47	8.90	0.30	0.29	6.31
	2010-12	744	13.80	0.45	0.45	8.60	0.28	0.28	6.23
102/15-04-002-25W1/00		8,736	341.7	0.94	0.93	40.1	0.11	0.11	1.17
	2010-01	744	28.80	0.93	0.93	3.50	0.11	0.11	1.22
	2010-02	672	29.30	1.05	1.05	3.40	0.12	0.11	1.16
	2010-03	744	44.30	1.43	1.43	5.10	0.16	0.16	1.15
	2010-04	720	29.70	0.99	0.99	3.30	0.11	0.11	1.11
	2010-05	720	26.70	0.86	0.83	3.10	0.10	0.10	1.16
	2010-06	720	25.80	0.86	0.86	3.20	0.11	0.10	1.24
	2010-07	744	25.60	0.83	0.83	2.90	0.09	0.09	1.13
	2010-08	744	28.00	0.90	0.90	3.20	0.10	0.10	1.14
	2010-09	720	26.00	0.87	0.87	3.00	0.10	0.10	1.15
	2010-10	744	27.90	0.90	0.90	3.10	0.10	0.10	1.11
	2010-11	720	25.30	0.84	0.84	3.20	0.11	0.10	1.26
	2010-12	744	24.30	0.78	0.78	3.10	0.10	0.10	1.28



# EOG Resources Canada Inc.

## Waskada Unit No. 16 2010 Production Volumes

Well Location	Date	Hours On	Monthly Produced Oil (m³)	Oil Cal-d (m³/d)	Oil Prd-d (m³/d)	Monthly Produced H₂O (m³)	H₂O Cal-d (m³/d)	H₂O Prd-d (m³/d)	WOR (E1m³/m³)
Unit No. 16 2010 Total:									
	Jan-10	17,448	730.60	23.57	23.03	847.30	27.33	26.71	11.60
	Feb-10	16,128	693.60	24.77	24.77	811.00	28.96	28.96	11.69
	Mar-10	17,496	1025.50	33.08	32.41	1221.00	39.39	38.59	11.91
	Apr-10	17,256	728.20	24.27	24.24	863.10	28.77	28.73	11.85
	May-10	17,784	681.50	21.98	21.90	905.10	29.20	29.08	13.28
	Jun-10	16,728	589.20	19.64	19.01	897.20	29.91	28.95	15.23
	Jul-10	17,472	617.60	19.92	19.49	886.30	28.59	27.98	14.35
	Aug-10	17,280	645.50	20.82	20.15	879.30	28.36	27.45	13.62
	Sep-10	16,776	573.90	19.13	18.57	860.30	28.68	27.84	14.99
	Oct-10	17,856	706.00	22.77	22.77	875.50	28.24	28.24	12.40
	Nov-10	17,280	630.30	21.01	21.01	955.60	31.85	31.85	15.16
	Dec-10	17,496	603.50	19.47	19.08	830.00	26.77	26.23	13.75
2010 Total		207,000	8,225.40			10,831.70			

Unit No. 16 Total:									
	1984	3,600	773.90	2.12	0.04	1891.60	5.18	0.09	24.44
	1985	29,952	5938.40	16.27	2.32	3359.40	9.20	1.31	5.66
	1986	94,440	16130.10	44.19	19.85	3175.40	8.70	3.91	1.97
	1987	155,280	19644.10	53.82	39.75	5005.60	13.71	10.13	2.55
	1988	222,336	33617.30	92.10	97.40	5787.40	15.86	16.77	1.72
	1989	196,344	29005.10	79.47	74.21	4528.30	12.41	11.59	1.56
	1990	207,408	27089.30	74.22	73.22	13533.90	37.08	36.58	5.00
	1991	208,224	24743.30	67.79	67.14	24878.40	68.16	67.51	10.05
	1992	208,632	21330.40	58.44	57.99	66960.60	183.45	182.05	31.39
	1993	207,792	19754.00	54.12	53.49	72773.70	199.38	197.06	36.84
	1994	205,104	18064.30	49.49	48.28	76017.50	208.27	203.18	42.08
	1995	207,888	16720.60	45.81	45.30	106240.30	291.07	287.81	63.54
	1996	205,032	14842.80	40.67	39.66	107098.60	293.42	286.15	72.16
	1997	204,408	13016.20	35.66	34.67	100416.60	275.11	267.48	77.15
	1998	206,256	11726.10	32.13	31.52	101587.90	278.32	273.05	86.63
	1999	192,864	11714.50	32.09	29.44	103785.10	284.34	260.84	88.60
	2000	198,696	10086.80	27.64	26.12	36787.40	100.79	95.25	36.47
	2001	193,728	10123.50	27.74	25.56	44885.40	122.97	113.32	44.34
	2002	198,600	17231.30	47.21	44.60	66270.30	181.56	171.51	38.46
	2003	195,480	15738.80	43.12	40.09	104552.30	286.44	266.33	66.43
	2004	193,368	14340.00	39.29	36.13	122640.20	336.00	309.04	85.52
	2005	194,040	11625.60	31.85	29.40	63636.90	174.35	160.91	54.74
	2006	204,283	11598.30	31.78	30.88	47642.80	130.53	126.83	41.08
	2007	207,552	10417.00	28.54	28.17	51461.20	140.99	139.19	49.40
	2008	209,304	9322.50	25.54	25.43	54763.30	150.04	149.37	58.74
	2009	186,696	8346.70	22.87	20.31	9999.90	27.40	24.33	11.98
	2010	207,000	8225.40	22.54	22.19	10831.70	29.68	29.22	13.17
Grand Total		4,944,307	411,166.30			1,410,511.70			



## Table 5

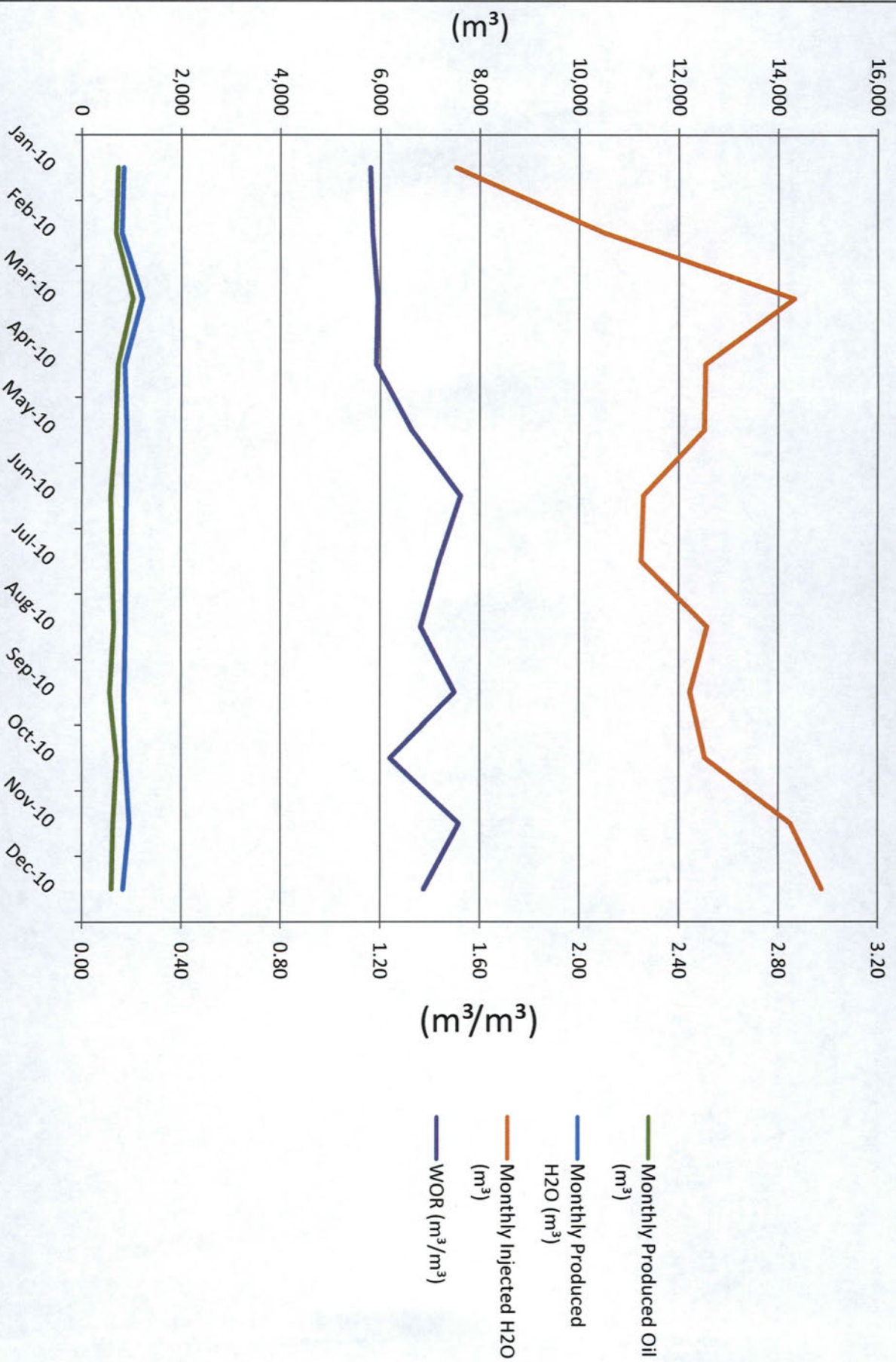
**EOG Resources Canada Inc.***Waskada Unit No. 16**2010 Workover Summary*

Well Type	UWI	Workover	Date
OIL	00/03-04-002-25W1/0		
OIL	00/04-04-002-25W1/0		
OIL	00/05-04-002-25W1/0		
OIL	00/06-04-002-25W1/0		
OIL	00/09-04-002-25W1/0		
OIL	00/10-04-002-25W1/0		
OIL	00/11-04-002-25W1/0		
OIL	00/12-04-002-25W1/0		
OIL	00/13-04-002-25W1/0		
OIL	00/13-04-002-25W1/2		
OIL	00/14-04-002-25W1/0	Acid Treatment	31-Jul-10
OIL	00/15-04-002-25W1/0		
OIL	00/16-04-002-25W1/0		
OIL	00/09-05-002-25W1/0	Pump Repair	29-Sep-10
OIL	00/10-05-002-25W1/0		
OIL	00/15-05-002-25W1/0	Tubing Repair	17-Jul-10
OIL	00/16-05-002-25W1/0		
OIL	00/01-09-002-25W1/0	Acid Treatment	30-Jul-10
OIL	00/01-09-002-25W1/0	Packer Repair	24-Jul-10
OIL	00/02-09-002-25W1/0		
OIL	00/03-09-002-25W1/0		
OIL	00/04-09-002-25W1/2		
OIL	00/05-09-002-25W1/0		
OIL	00/05-09-002-25W1/2		
OIL	00/06-09-002-25W1/0		
OIL	00/07-09-002-25W1/0		
OIL	00/08-09-002-25W1/0		
OIL	00/09-09-002-25W1/0		
OIL	00/10-09-002-25W1/0		
OIL	00/15-09-002-25W1/0		
OIL	00/16-09-002-25W1/0		
OIL	00/04-10-002-25W1/0		
OIL	00/05-10-002-25W1/0		
OIL	00/12-10-002-25W1/0		
OIL	00/13-10-002-25W1/0		
OIL	00/14-10-002-25W1/0	Acid Treatment	31-Jul-10
OIL	02/15-04-002-25W1/0		
OIL	02/05-09-002-25W1/0		
WTR	C0/03-04-002-25W1/0		
WTR	00/05-04-002-25W1/0		
WTR	C0/06-04-002-25W1/0		
WTR	C0/10-04-002-25W1/0		
WTR	00/11-04-002-25W1/0		
WTR	C0/11-04-002-25W1/0		
WTR	C0/12-04-002-25W1/0		
WTR	C0/14-04-002-25W1/0	Packer Repair	26-Jul-10
WTR	00/15-04-002-25W1/0		
WTR	C0/15-04-002-25W1/0		
WTR	C0/16-04-002-25W1/0		
WTR	00/16-05-002-25W1/0		
WTR	00/01-09-002-25W1/0	Acid Treatment	30-Jul-10
WTR	00/01-09-002-25W1/0	Packer Repair	24-Jul-10
WTR	02/01-09-002-25W1/0		
WTR	C0/03-09-002-25W1/0		
WTR	00/06-09-002-25W1/0		
WTR	C0/07-09-002-25W1/0		
WTR	C0/09-09-002-25W1/0		
WTR	00/10-09-002-25W1/0		
WTR	00/16-09-002-25W1/0		
WTR	C0/04-10-002-25W1/0		
WTR	00/05-10-002-25W1/0		
WTR	02/05-10-002-25W1/0		
WTR	C0/12-10-002-25W1/0	Packer Repair	18-Jan-10
WTR	C0/13-10-002-25W1/0		
WTR	C0/14-10-002-25W1/0		



# Appendix 1

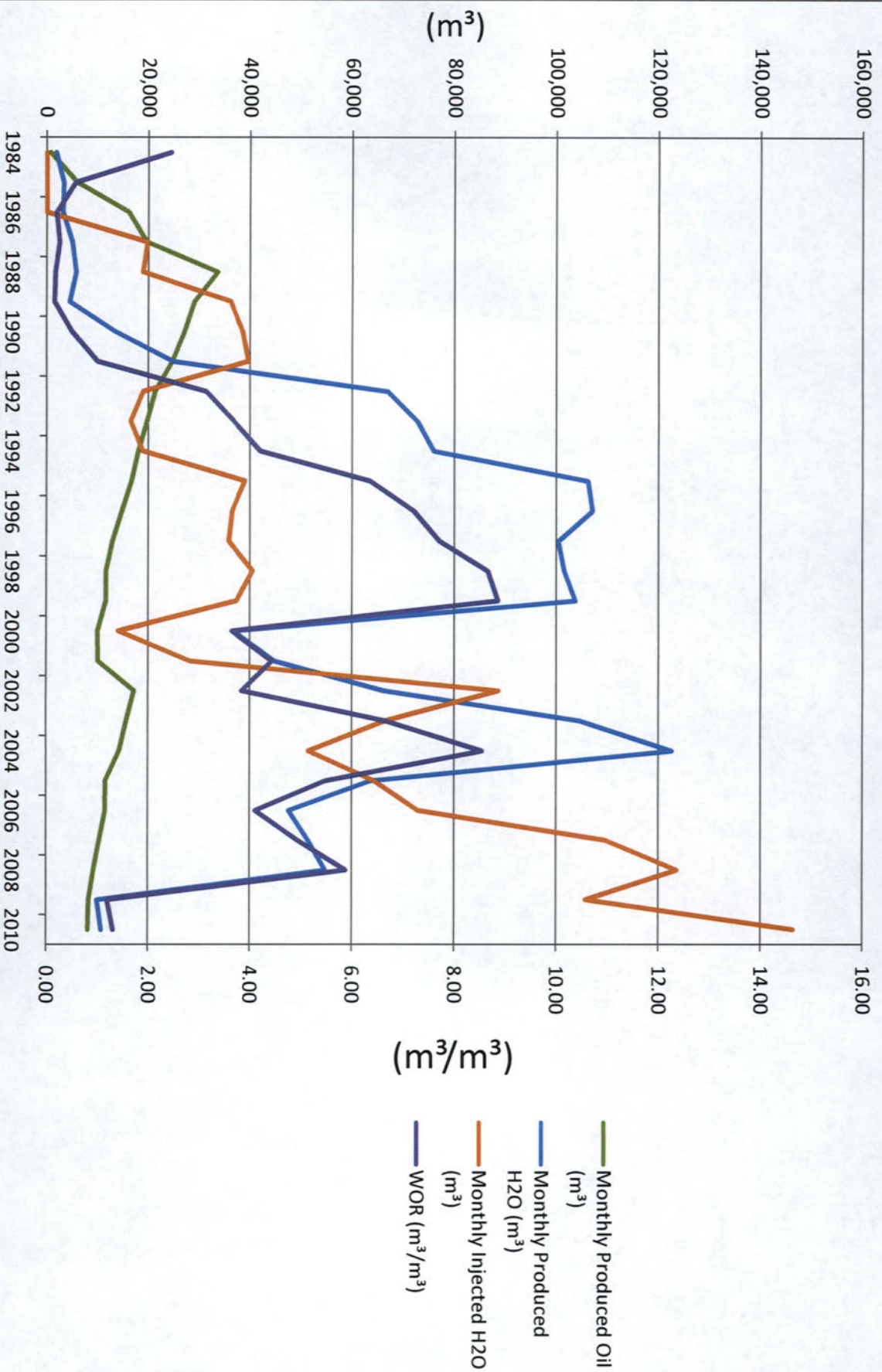
# Unit No. 16 2010 Production & Injection





## Appendix 2

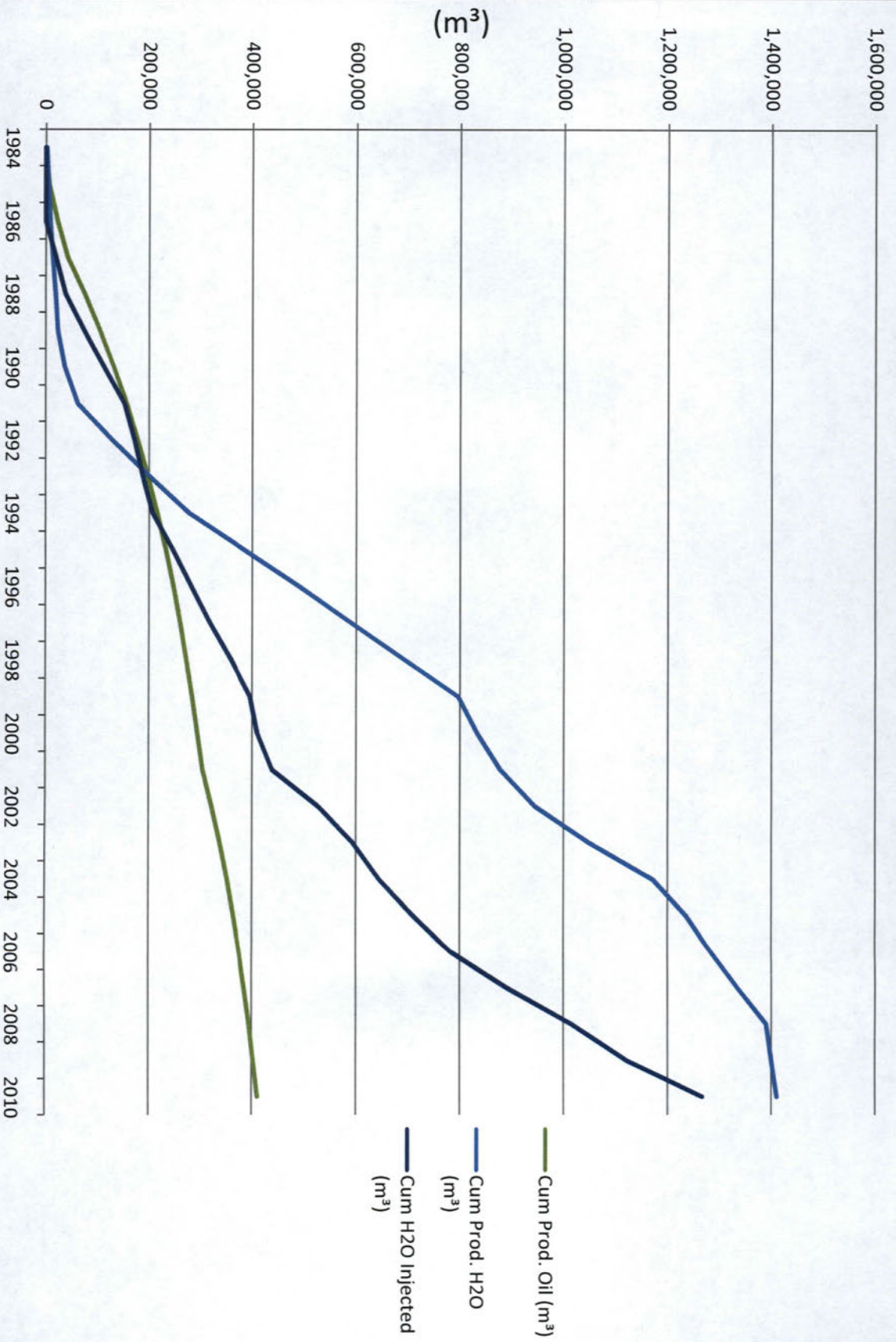
# Unit No. 16 Historical Production & Injection





# Appendix 3

## Unit No. 16 Cumulative Production & Injection



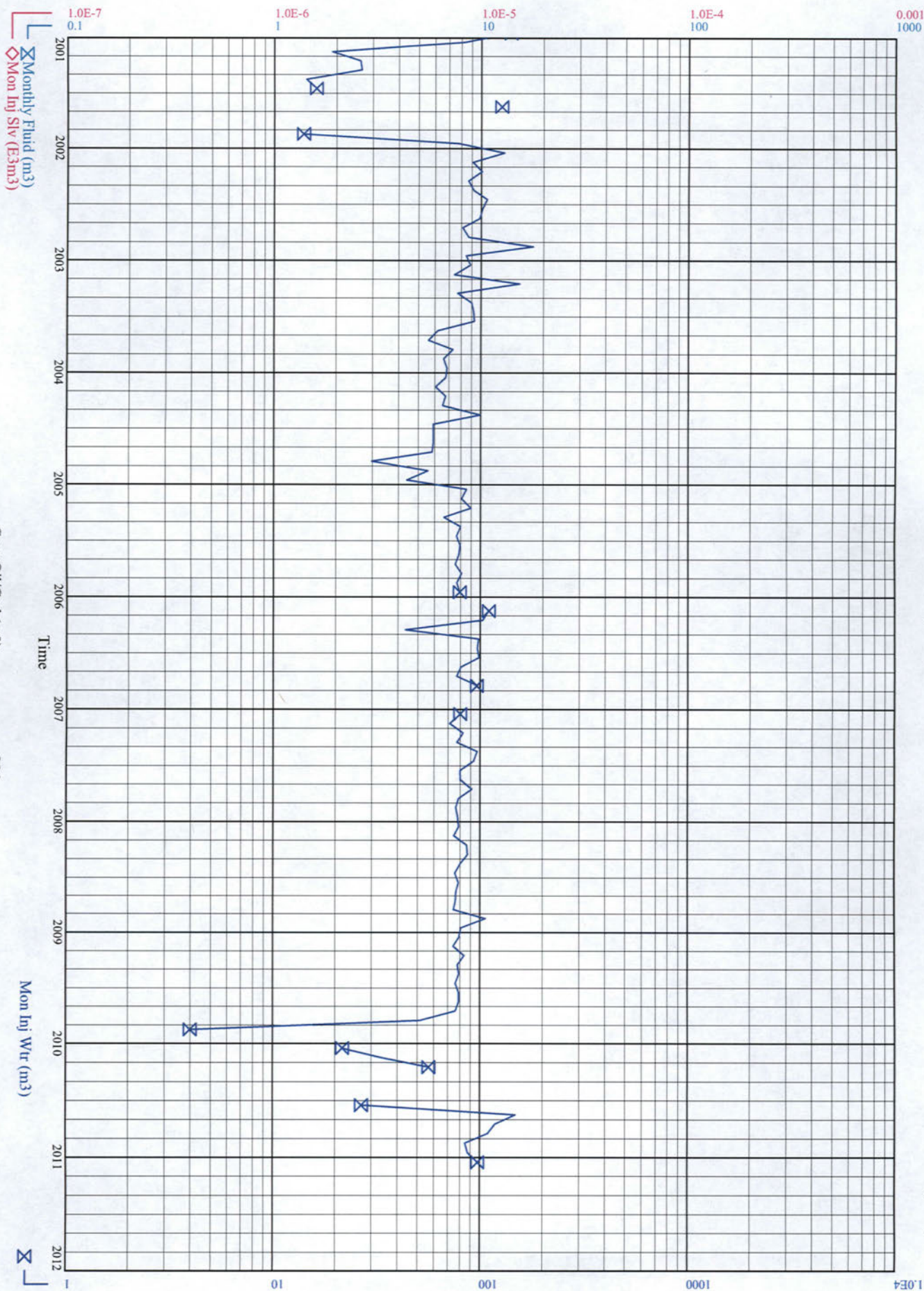


## Appendix 4

Curr Licensee: EOG RESOURCES  
Orig Licensee: EOG RESOURCES  
Status: Water Inj  
Prod Zone(s): SPRF

ENRON ET AL WASKADA 1-9-2-25  
00/01-09-002-25W1/0  
April 28, 2011

Unit Code: 329A16  
Pool Code: 01  
Field: WASKADA  
On Prod: August 1, 1987



Cum Oil/Cnd (m³): 394  
Cum Gas (E3m³): 0  
Cum Wtr (m³): 508

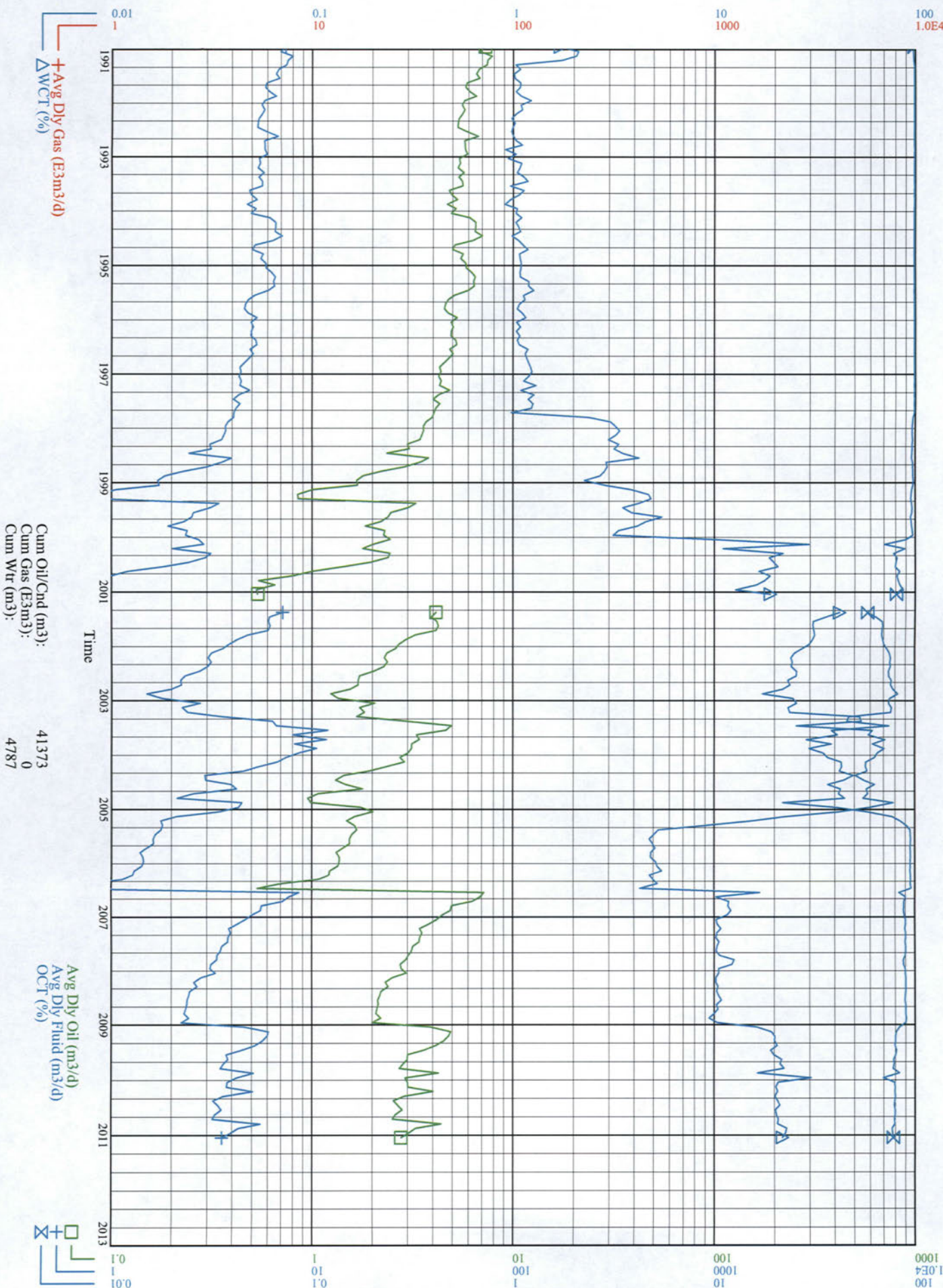
Mon Inj Wtr (m³)



Curr Licensee: EOG RESOURCES  
Orig Licensee: EOG RESOURCES  
Status: Oil, Prod  
Prod Zone(s): SPRF

ENRON ET AL WASKADA 9-5-2-25  
00/09-05-002-25W1/0  
April 28, 2011

Unit Code: 329A16  
Pool Code: 01  
Field: WASKADA  
On Prod: November 1, 1985

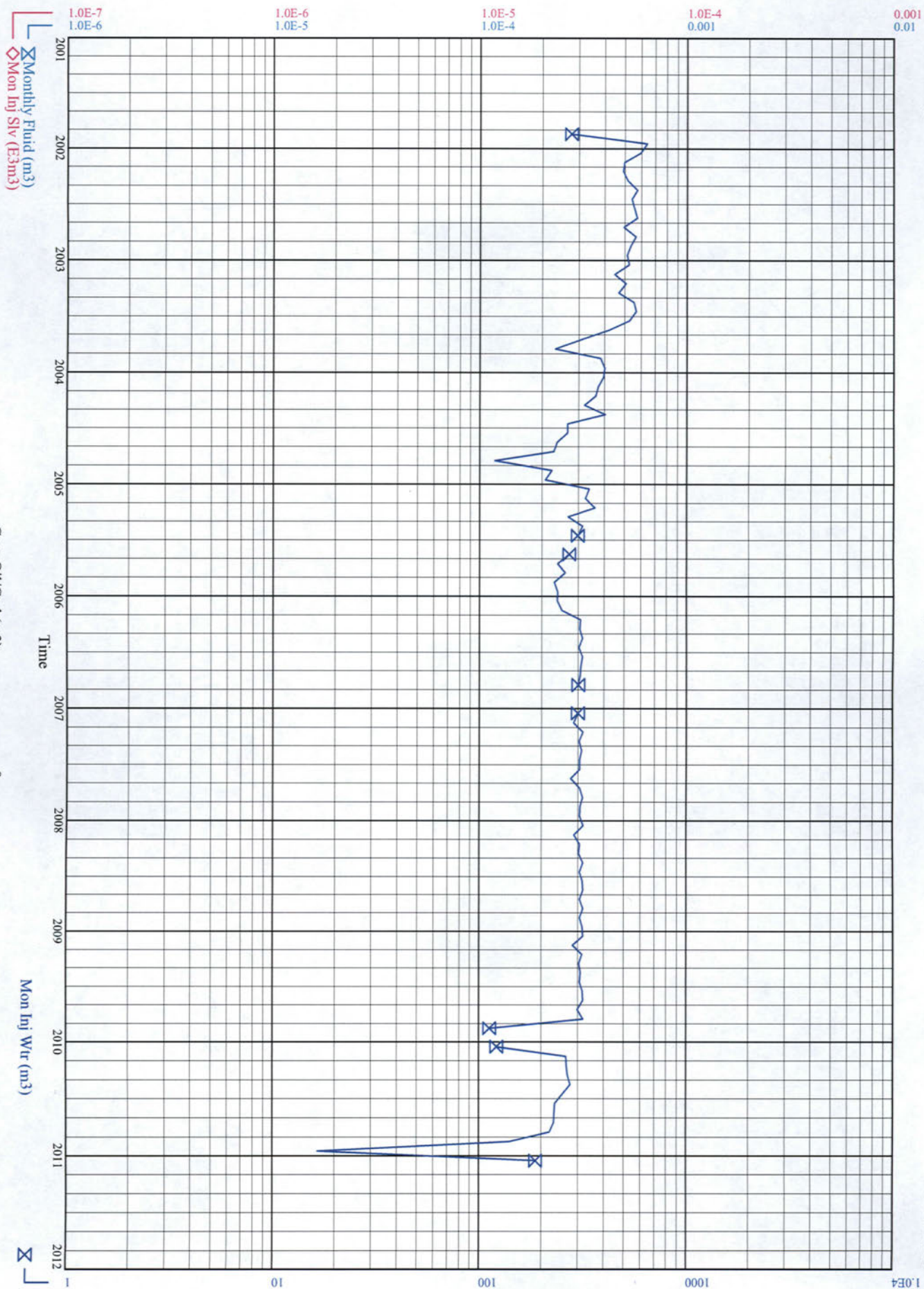




Curr Licensee: EOG RESOURCES  
Org Licensee: EOG RESOURCES  
Status: Water Inj  
Prod Zone(s): SPRF

WASKADA UN NO. 1 6 PROV WIW 12C  
C0/12-10-002-25W1/0  
April 28, 2011

Unit Code: 329A16  
Pool Code: 01  
Field: WASKADA  
On Prod: Not Available



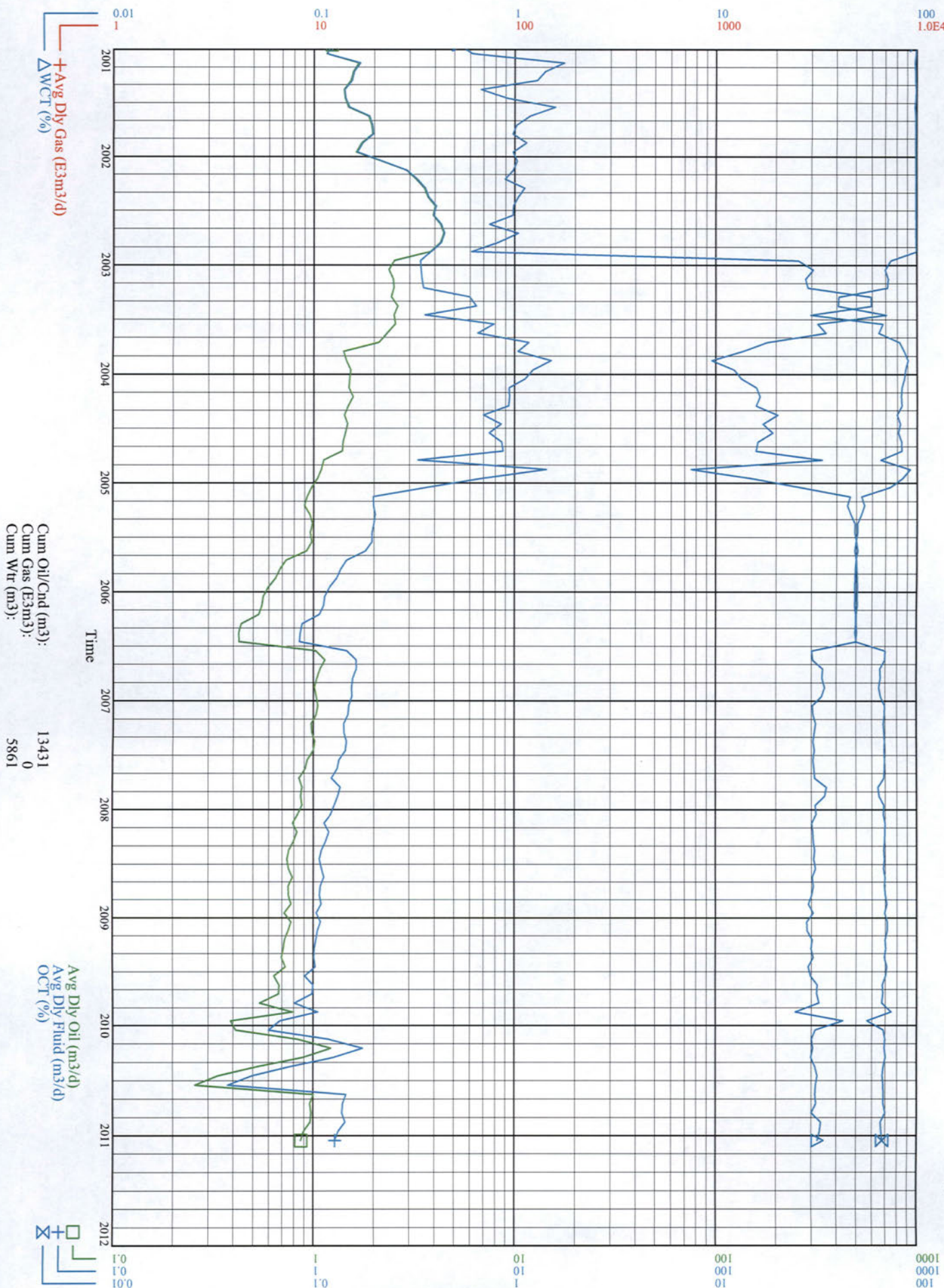
Cum Oil/Cnd (m³): 0  
Cum Gas (E3m³): 0  
Cum Wtr (m³): 0



Curr Licensee: EOG RESOURCES  
Orig Licensee: EOG RESOURCES  
Status: Oil, Prod  
Prod Zone(s): SPRF

ENRON ET AL WASKADA PROV. 14-4-  
00/14-04-002-25W1/0  
April 28, 2011

Unit Code: 329A16  
Pool Code: 01  
Field: WASKADA  
On Prod: February 1, 1986

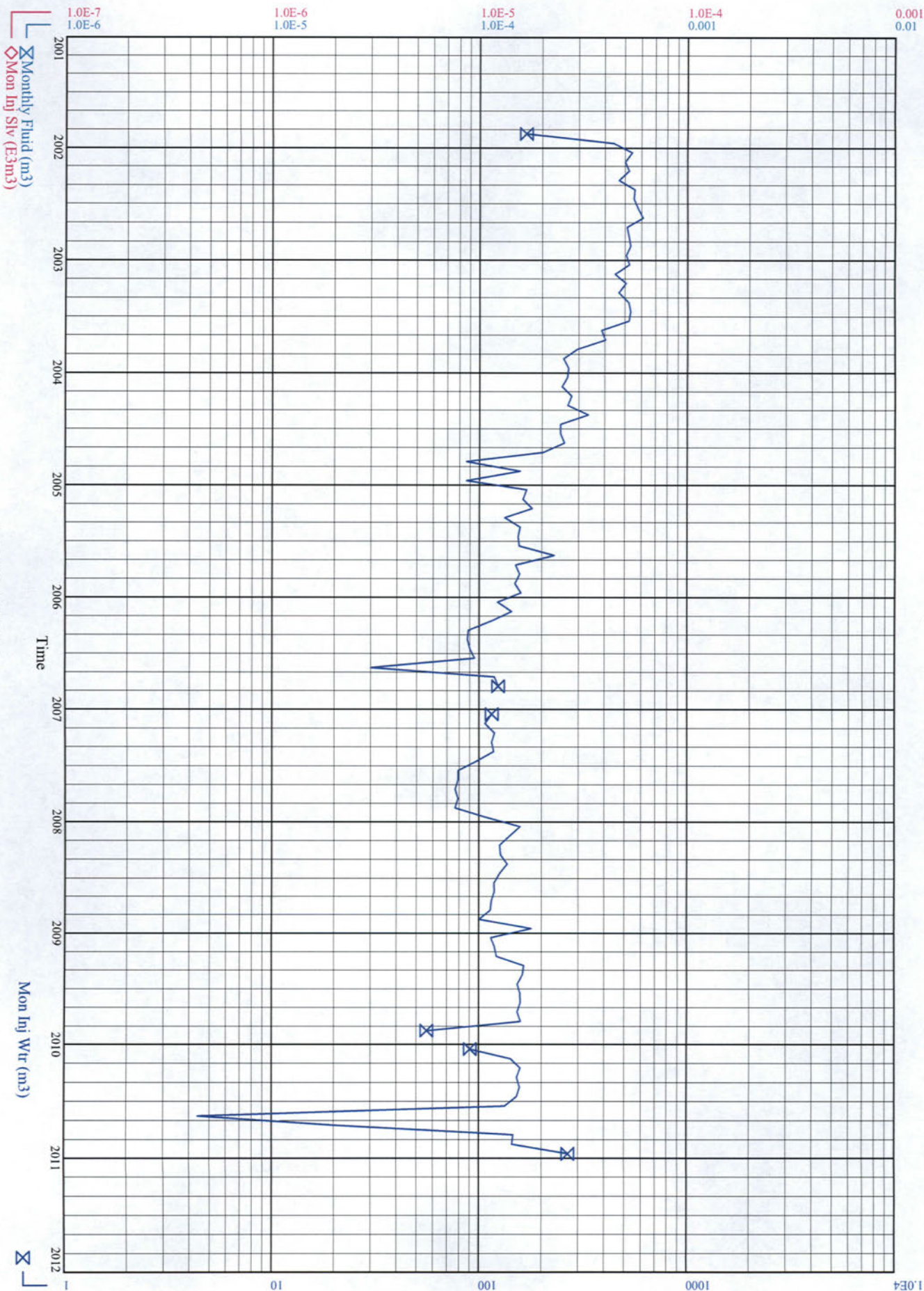




Curr Licensee: EOG RESOURCES  
Orig Licensee: EOG RESOURCES  
Status: Water, Inj  
Prod Zone(s): SPRF

WASKADA UN NO 16, PROV W/W 14C-4  
C0/14-04-002-25W1/0  
April 28, 2011

Unit Code: 329A16  
Pool Code: 01  
Field: WASKADA  
On Prod: Not Available

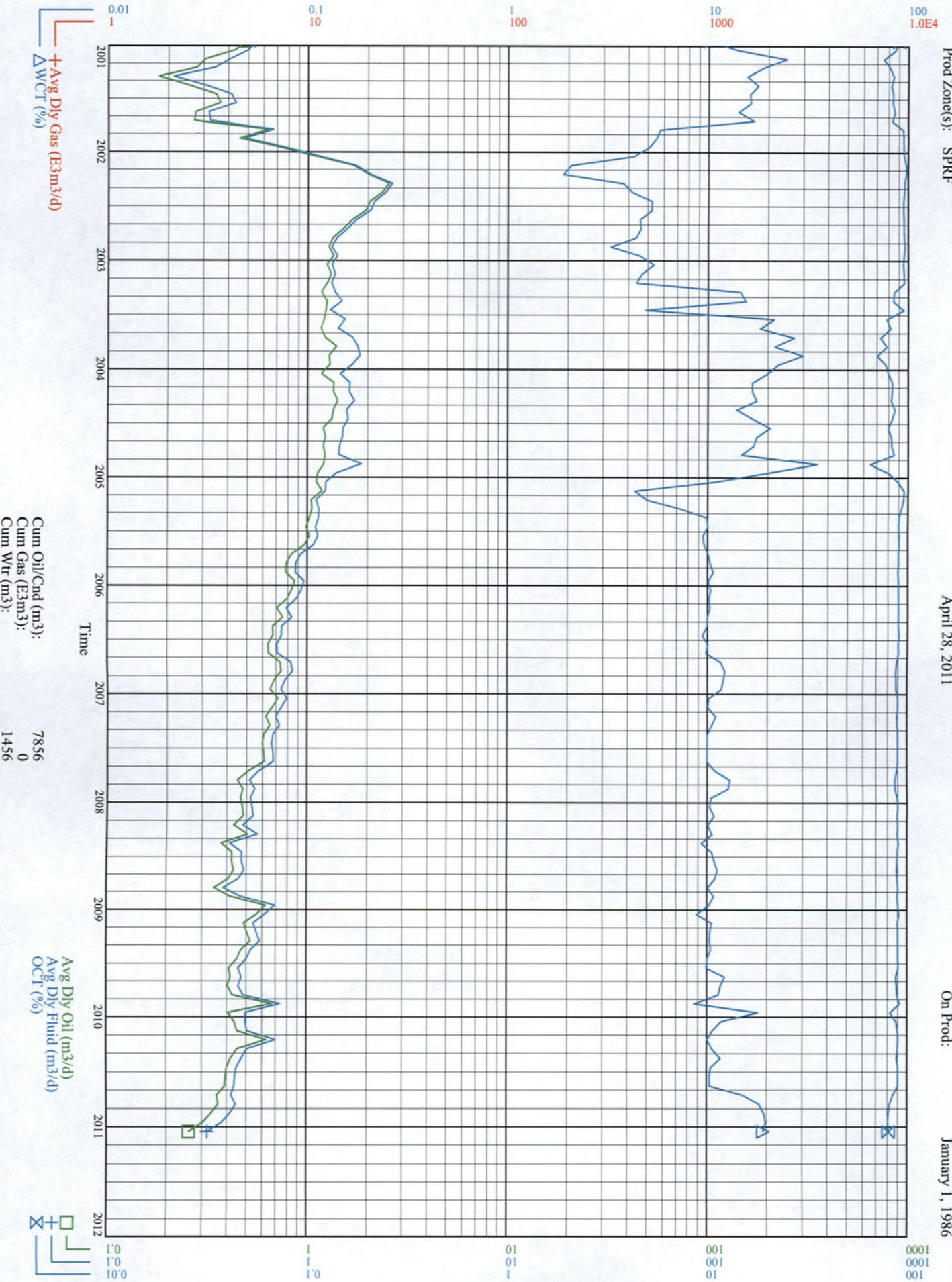




Curr Licensee: EOG RESOURCES  
Orig Licensee: EOG RESOURCES  
Status: Oil,Prod  
Prod Zone(s): SPRF

ENRON ET AL WASKADA PROV. 14-10  
00/14-10-002-25W1/0  
April 28, 2011

Unit Code: 329A16  
Pool Code: 01  
Field: WASKADA  
On Prod: January 1, 1986





Curr Licensee: EOG RESOURCES  
Orig Licensee: EOG RESOURCES  
Status: Oil, Prod  
Prod Zone(s): SPRF

ENRON ET AL WASKADA 15-5-2-25  
00/15-05-002-25W1/0  
April 28, 2011

Unit Code: 329A16  
Pool Code: 01  
Field: WASKADA  
On Prod: December 1, 1985

