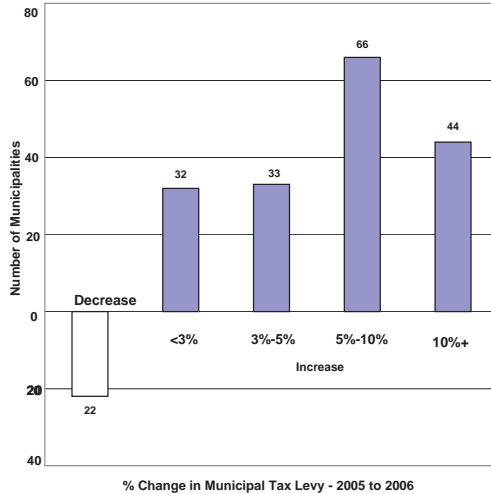


MUNICIPAL PROPERTY TAX CHANGES 2005-2006

Percentage Change in Municipal Taxes Number of Municipalities

(Excludes City of Winnipeg, LGD of Mystery Lake)



2006 Municipal Taxes increased in 175 or 89% of municipalities.

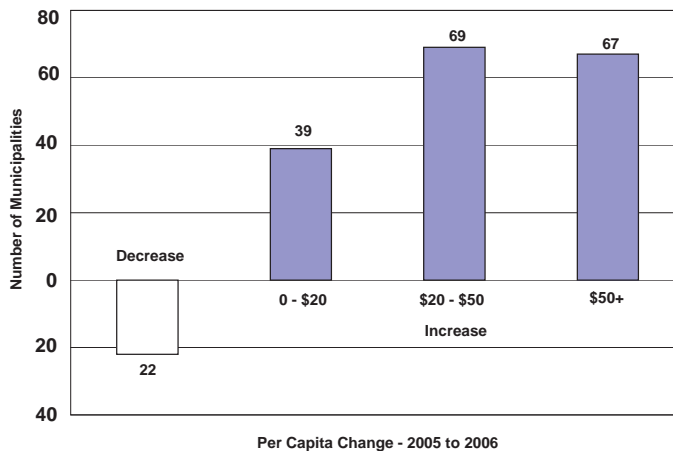
- 32 or 16% of municipalities had Municipal Tax increases of less than 3%.
- 99 or 51% of municipalities had Municipal Tax increases between 3% and 10%.
- 44 or 22% of municipalities had Municipal Tax increases over 10%.

22 or 11% of municipalities had Municipal Tax decreases.

Municipalities	Total #	Increase				
		Decrease	0 - 3%	3% - 5%	5%-10%	Increase 10%+
Rural (all RMs)	116	13	23	18	39	23
Urban (Villages / Towns / Cities)	81	9	9	15	27	21
Total	197	22	32	33	66	44
% of Total	100	11%	16%	17%	34%	22%

2006 Municipal Taxes Per Capita Number of Municipalities

(Excludes City of Winnipeg, LGD of Mystery Lake)



Municipal taxes per resident increased in 175 or 89% of municipalities.

Municipal taxes per resident decreased in 22 or 11% of municipalities.

For information on the property taxes of a specific municipality, please contact the municipal office.