


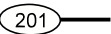
MUNICIPALITY OF EMERSON-FRANKLIN

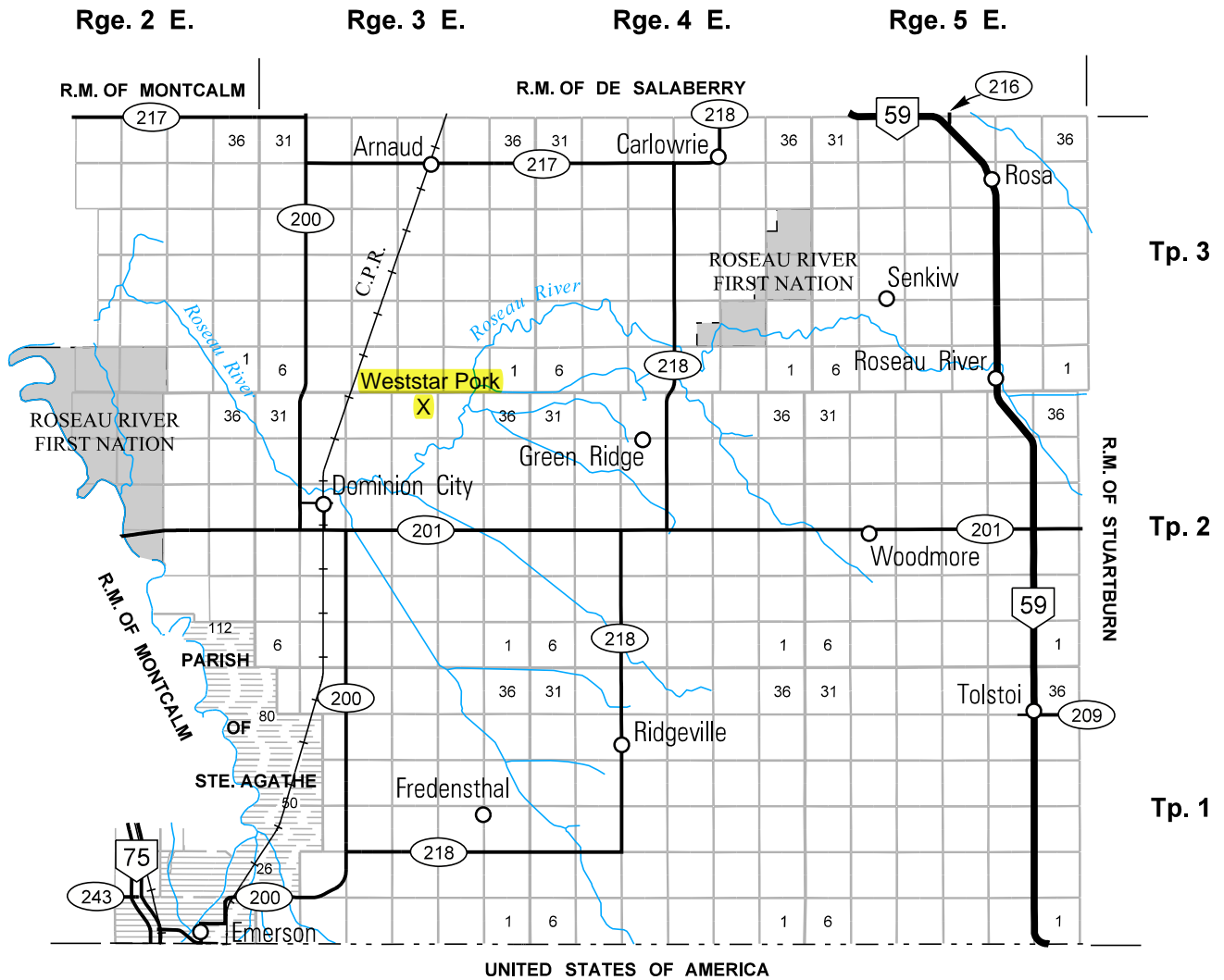


0 5
SCALE IN KILOMETRES

PROVINCE OF MANITOBA
INFRASTRUCTURE
HIGHWAY PLANNING AND DESIGN BRANCH
GEOGRAPHIC & RECORDS MANAGEMENT SECTION
WINNIPEG
JANUARY 1, 2015

LEGEND

PROVINCIAL TRUNK HIGHWAYS  ACCESS ROADS
PROVINCIAL ROADS  RAILWAYS



Animal Units Calculator

A	B	C	Current Operation		Proposed Operation	
			D	E	F	G
Operation Type	Animal Categories	Animal Units per Head	Current Number of Animals ¹	Current Animal Units	Proposed Number of Animals ²	Proposed Number of Animal Units
Dairy ³	Mature cows (lactating and dry) including associated livestock	2		-		-
	Mature cows (lactating and dry)	1.35		-		-
	Heifers (0 to 3 months)	0.16		-		-
	Heifers (4 to 13 months)	0.41		-		-
	Heifers (> 13 months)	0.87		-		-
	Bulls	1.35		-		-
	Veal calves	0.13		-		-
Beef	Beef cows including associated livestock	1.25		-		-
	Backgrounder	0.5		-		-
	Summer pasture / replacement heifers	0.625		-		-
	Feeder cattle	0.769		-		-
Pigs	Sows - farrow to finish (234-254 lbs)	1.25		-		-
	Sows - farrow to weaning (up to 11 lbs)	0.25		-		-
	Sows - farrow to nursery (51 lbs)	0.313		-		-
	Boars (artificial insemination units)	0.2		-		-
	Weanlings, Nursery (11-51 lbs)	0.033		-		-
	Growers / Finishers (51-249 lbs)	0.143	8,000	1,144	12,000	1,716
Chickens	Broilers	0.005		-		-
	Roasters	0.01		-		-
	Layers	0.0083		-		-
	Pullets	0.0033		-		-
	Broiler breeder pullets	0.0033		-		-
	Broiler breeder hens	0.01		-		-
Turkeys	Broilers	0.01		-		-
	Heavy Toms	0.02		-		-
	Heavy Hens	0.01		-		-
Horses	Mares	1.333		-		-
Sheep	Ewes	0.2		-		-
	Feeder lambs	0.063		-		-
Other Livestock	Type:			-		-
	Type:			-		-
Total Current:				1,144	Total Proposed:	1,716

Footnotes:

¹ Enter the current number of animals on the farm based on the operation's capacity (animal places) or previous Conditional Use Approval.

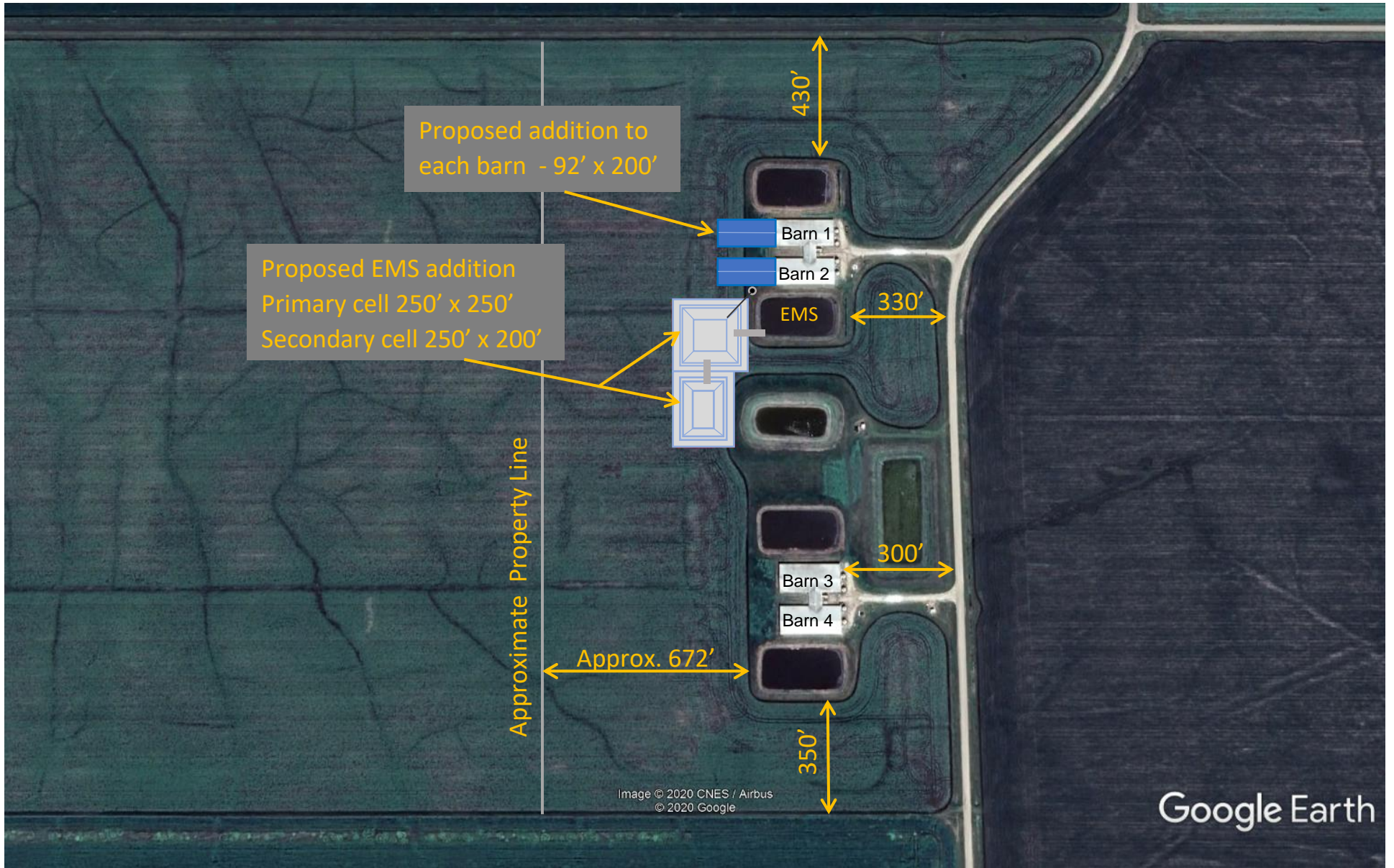
² Enter the total number of animals associated with the operation post construction or expansion.

³ There are 2 methods for calculating animal units for dairy (Farm Practices Guidelines for Dairy Producers in Manitoba, 1995). You can enter the total number of mature cows in the milking herd under the "Mature cows (lactating and dry) including associated livestock" category and the animal units will be calculated by multiplying this number by 2. This calculation assumes 85 lactating, 15 dry, 12 heifers (0 to 3 months), 36 heifers (4 to 13 months) and 50 heifers (> 13 months) for an operation with 100 mature cows. "Associated livestock" includes all of the heifer calves and replacement heifers. Alternatively, you can enter animal numbers in the individual categories (mature cows, heifers (0 to 3 months), heifers (4 to 13 months) and heifers (> 13 months)) and they will be summed at the bottom of the table. Bulls and veal calves are always calculated separately.

For all other livestock or operation types please inquire with [Manitoba Agriculture and Resource Development](#)



Weststar Pork Inc. Site Location



Proposed Weststar Pork Inc. Site Plan

Water Requirement Calculation Table

Livestock	Number	IG/day per animal in winter	IG/day per animal in summer	IG/day (Imperial gallons per day)
Beef/Dairy/Bison *				
Feeder/heifer/steer (600 lb.)		5	9	-
Feeder (900 lb.)		7	12	-
Feeder (1250 lb.)		10	15	-
Cow/calf pair		12	15	-
Dry milking cow **		10	12	-
Lactating cow **		25	30	-
Bison		8	10	-
Horses				
Horses		8	11	-
Hogs				
Sow (Farrow/wean)			5.5	-
Dry Sow/Boar			4	-
Feeder	12,000		2	24,000
Nursery (33 lb.)			1	-
Chickens				
Broilers			0.035	-
Roasters/Pullets			0.04	-
Layers			0.055	-
Breeders			0.07	-
Turkeys				
Turkey Growers			0.13	-
Turkey Heavies			0.16	-
Sheep/Goats				
Sheep/Goats			2	-
Ewes/Does			3	-
Lambs/Kids (90 lb.)			1.6	-
TOTAL (IG/day)				24,000
***				TOTAL with 10% wash water
				26,400

* For beef, dairy, bison and horse enterprises:
Use summer numbers if appropriate for the operation. Otherwise base projections on winter values. Always use the greater of the two values.

** For intensive Dairy operations, please use the Dairy Barn Water Requirement Calculator found on separate sheet.

*** 10% of the total is added to allow for wash water

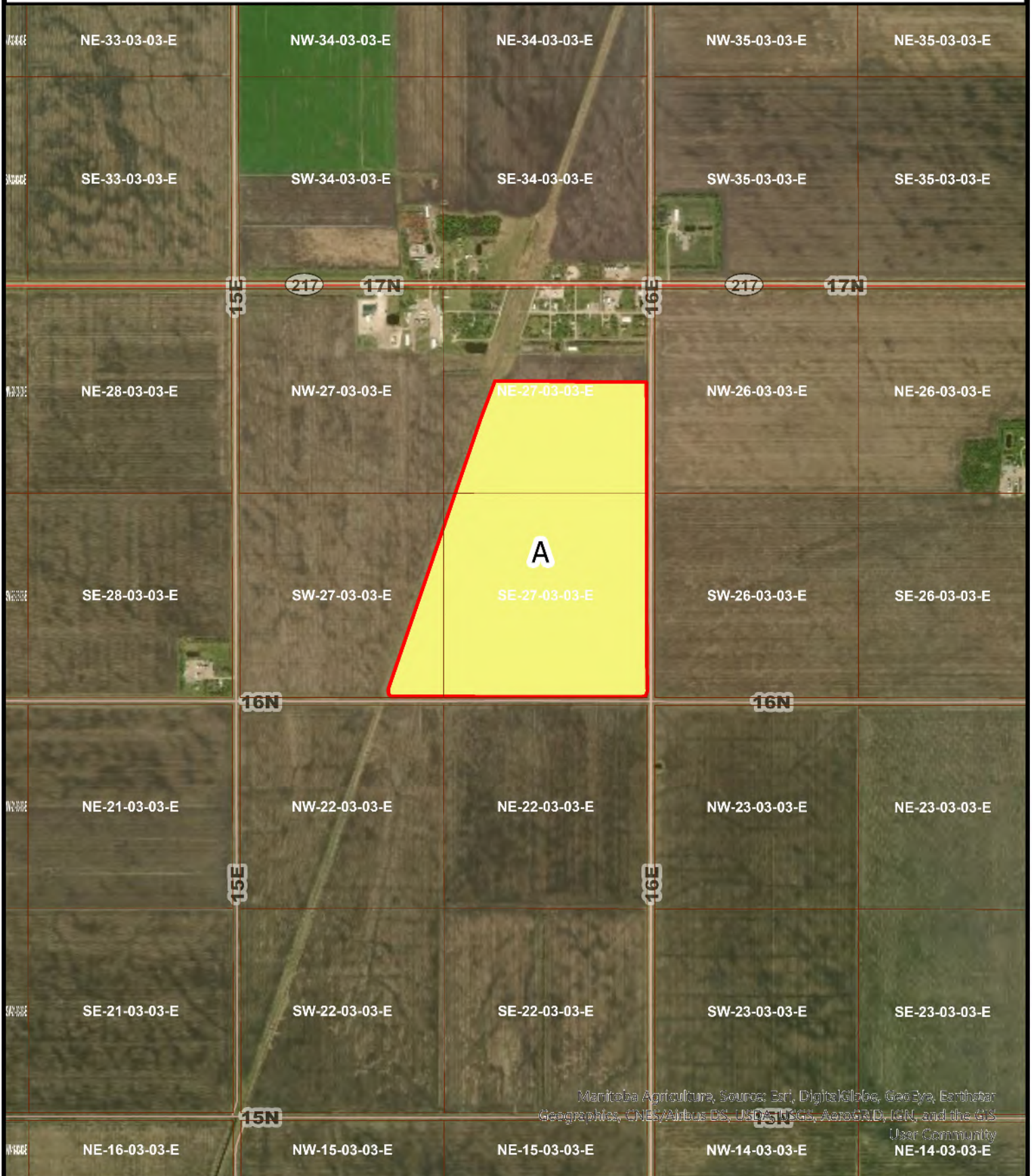
Unit Conversions		
Total per day	Total per year	Unit
26,400	9,636,000	IG
109,104	39,822,960	litres
0.109	40	cubic decametres (dam ³)

Other consumption:
Normal household consumption:
60-75 IG/day per person or
(272-340 l/day/person)

Conversion Factor: 1 IGPM = 4.546 l/m

Please note that the Water Requirement Calculator is an estimation only.

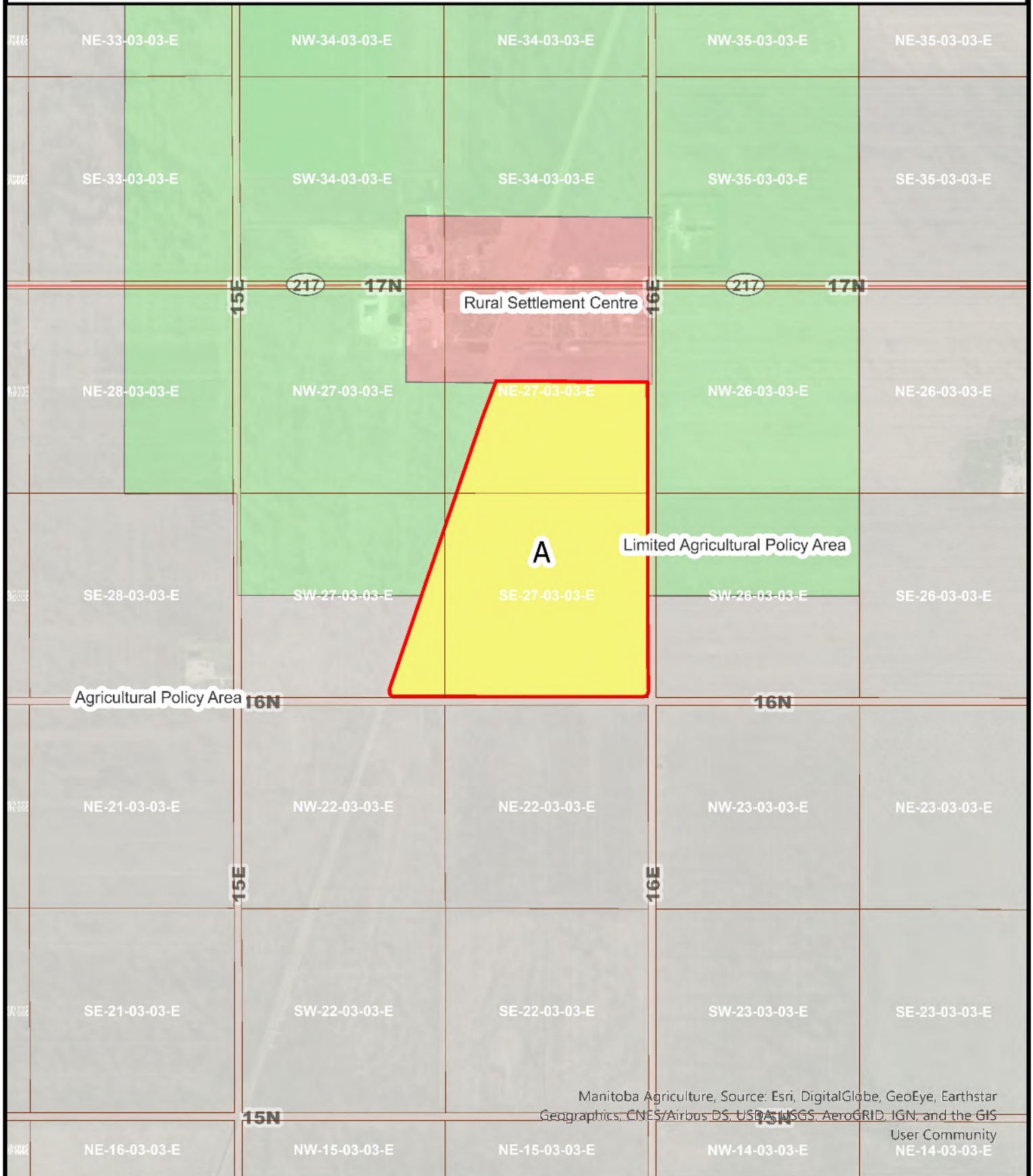
Weststar Pork Inc. Land Use 2



Manitoba Agriculture, Source: Esri, DigitsGlobe, GeoEye, Earthstar Geographics, CNES/Airbus DS, USDA, USGS, AeroGRID, IGN, and the GIS User Community

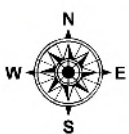


Weststar Pork Inc. Land Use - Dev. Plan 2

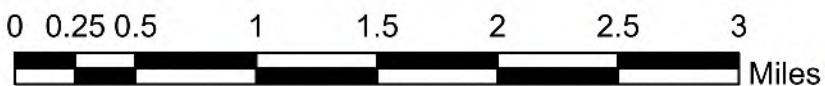
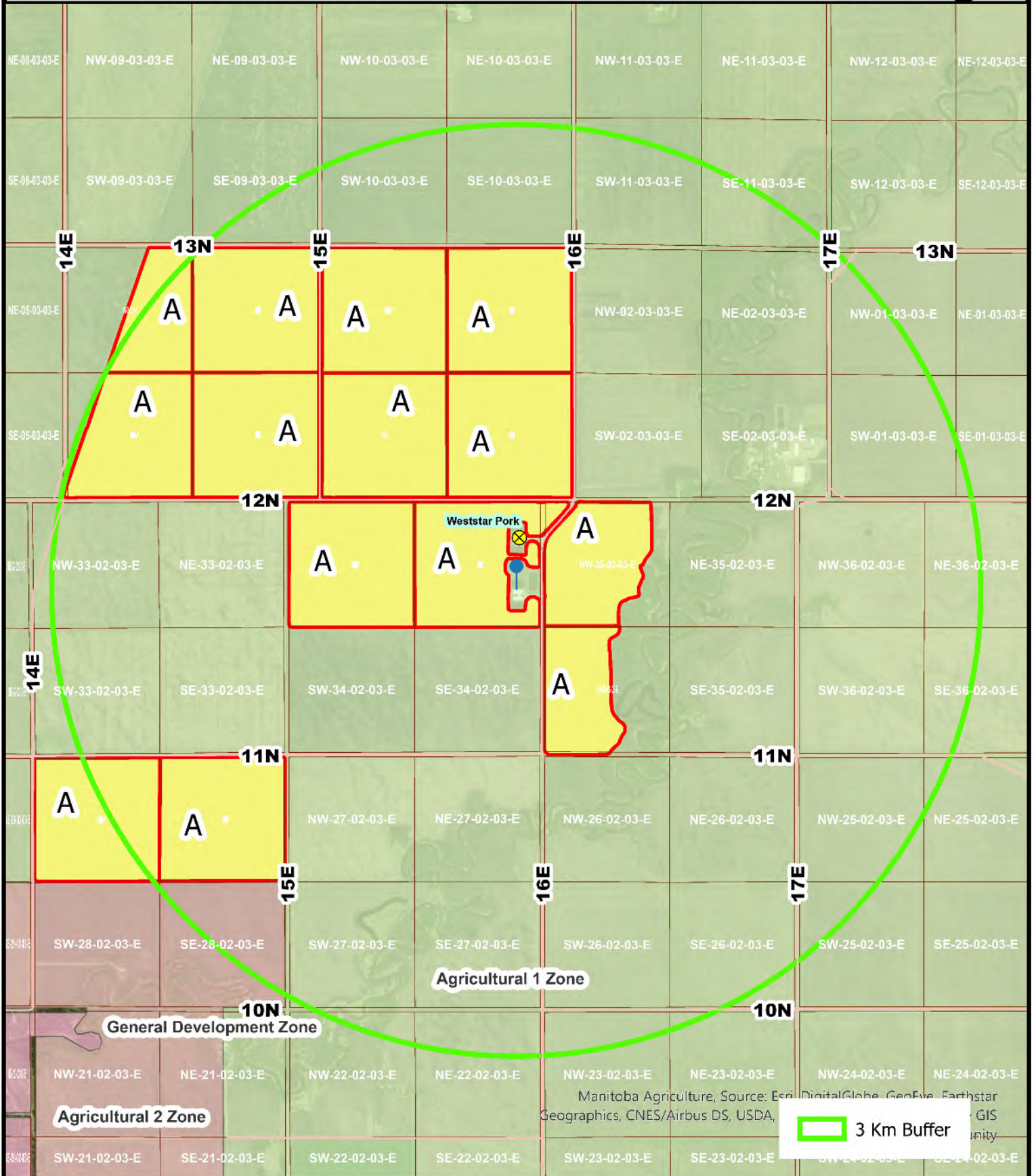


Manitoba Agriculture, Source: Esri, DigitalGlobe, GeoEye, Earthstar Geographics, CNES/Airbus DS, USDA, USGS, AeroGRID, IGN, and the GIS

User Community
NE-14-03-03-E

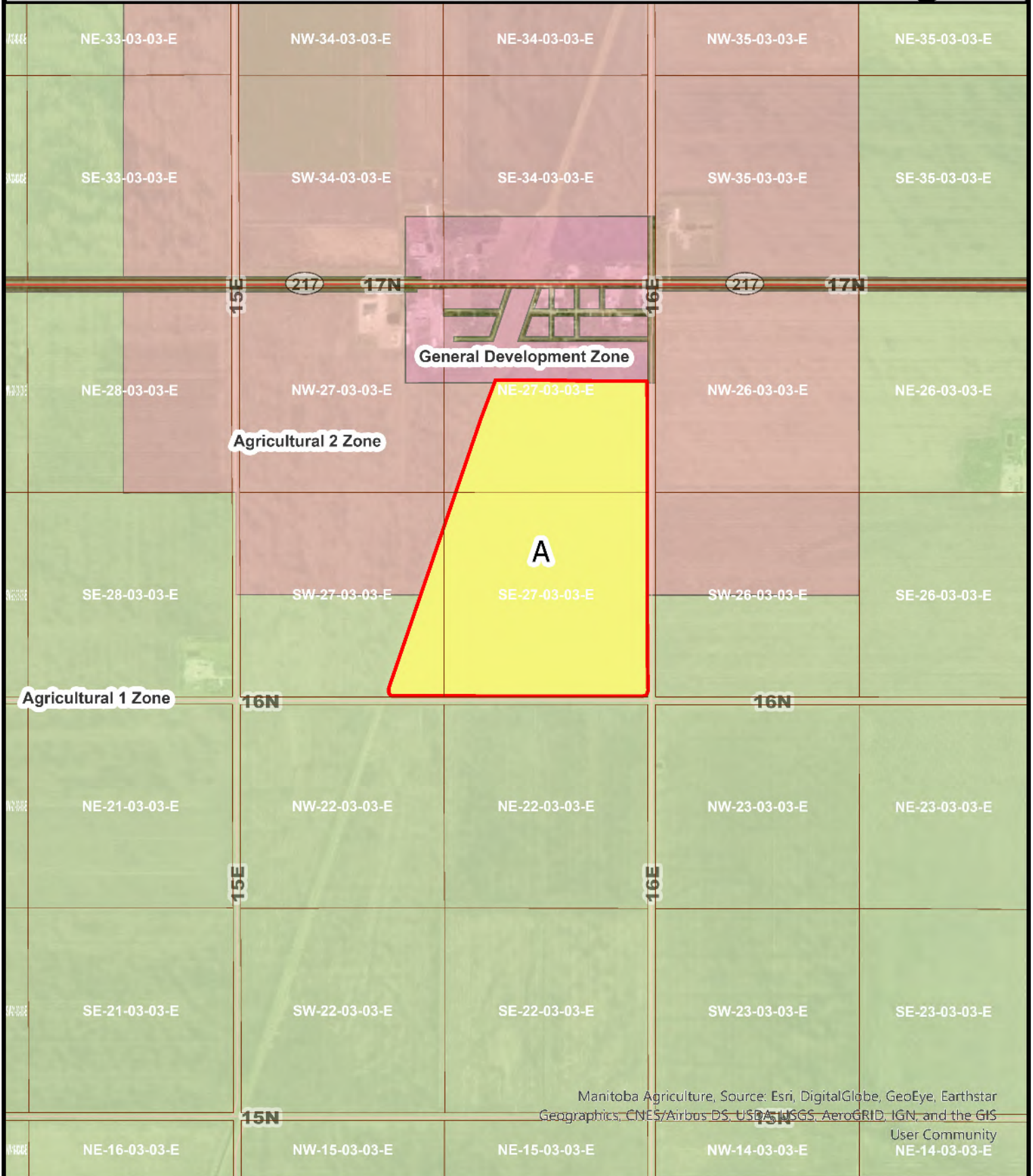


Weststar Pork Inc. - Land Use - Zoning

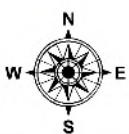


Manitoba Agriculture, Source: Esri, DigitalGlobe, GeoEye, Earthstar Geographics, CNES/Airbus DS, USDA, ... GIS ...

Weststar Pork Inc. Land Use - Zoning 2



Manitoba Agriculture, Source: Esri, DigitalGlobe, GeoEye, Earthstar
Geographics, CNES/Airbus-DS, USDA, USGS, AeroGRID, IGN, and the GIS
User Community
NE-14-03-03-E





MMPP - Variety Yield Data Browser

Select Municipalities or MASC Risk Areas

Click or touch the 'X' (at right) in these tip balloons to hide them permanently.

Click or touch the button below to select Municipalities or MASC Risk Areas.

Click or touch in the select boxes (below) to select at least one item from each list. Click or touch the icon to clear all selected items.

Select Crop(s)

If more than one crop is selected, the Yield Variety Data will be returned, but 'Top Varieties by Acres' and 'Top Varieties by Yield' charts won't be generated.

Select Varieties

Select Year Range

1993

1998

²⁰⁰²
2010

to ²⁰⁰⁷
2019

2012

2017

Search Summary

206 records returned

0 farm varieties grown on **1,111.0** acres

Average Yield

0.000 Tonnes (**0.0** Bushels) per acre

Summary includes aggregate data from 'below minimum tolerance' records

Variety Yield Data

'Below Minimum Tolerance' records contain data from fewer than 3 producers or 500 acres, marked as such to retain producer anonymity. Data from these records is included in the Search Summary totals.

Copy to Clipboard

Save as XLS

Showing 1 to 50 of 206 entries

First Previous Next Last

Year	Risk Area / R.M.	Country	Variety	Farms	Acres	Yield/acre (Metric)	Yield/acre (Imperial)
2017	EMERSON-FRANKLIN	ARGENTINE CANOLA	L252 (INVIGOR) (LT)	8	1,855.0	1.219 Tonnes	53.8 Bushels
2013	EMERSON-FRANKLIN	ARGENTINE CANOLA	L130 (INVIGOR) (LT)	15	3,825.0	1.198 Tonnes	52.8 Bushels
2019	EMERSON-FRANKLIN	ARGENTINE CANOLA	L255PC (INVIGOR) [6CN0122] (LT) {PSR-R}	5	1,127.0	1.186 Tonnes	52.3 Bushels
2019	EMERSON-FRANKLIN	ARGENTINE CANOLA	L140P (INVIGOR) (LT) {PSR-R}	5	1,566.0	1.184 Tonnes	52.2 Bushels
2018	EMERSON-FRANKLIN	ARGENTINE CANOLA	L252 (INVIGOR) (LT)	9	2,493.0	1.182 Tonnes	52.1 Bushels
2019	EMERSON-FRANKLIN	ARGENTINE CANOLA	L233P (BASF) [5CN0130] (LT) {PSR-R}	42	15,685.0	1.147 Tonnes	50.6 Bushels

Year	Risk Area / R.M.	Country	Variety	Farms	Acres	Yield/acre (Metric)	Yield/acre (Imperial)
2019	EMERSON-FRANKLIN	ARGENTINE CANOLA	L252 (INVIGOR) (LT)	5	1,217.0	1.139 Tonnes	50.2 Bushels
2013	EMERSON-FRANKLIN	ARGENTINE CANOLA	L154 (INVIGOR) (LT)	5	767.0	1.136 Tonnes	50.1 Bushels
2017	EMERSON-FRANKLIN	ARGENTINE CANOLA	L233P (BASF) [5CN0130] (LT) {PSR-R}	7	1,406.0	1.133 Tonnes	50.0 Bushels
2015	EMERSON-FRANKLIN	ARGENTINE CANOLA	L156H (INVIGOR HEALTH) (LT)	4	1,200.0	1.127 Tonnes	49.7 Bushels
2013	EMERSON-FRANKLIN	ARGENTINE CANOLA	L156H (INVIGOR HEALTH) (LT)	5	2,798.0	1.108 Tonnes	48.9 Bushels
2017	EMERSON-FRANKLIN	ARGENTINE CANOLA	L140P (INVIGOR) (LT) {PSR-R}	24	7,010.0	1.105 Tonnes	48.7 Bushels
2017	EMERSON-FRANKLIN	ARGENTINE CANOLA	L157H (INVIGOR HEALTH) (LT)	3	1,280.0	1.099 Tonnes	48.4 Bushels
2018	EMERSON-FRANKLIN	ARGENTINE CANOLA	L233P (BASF) [5CN0130] (LT) {PSR-R}	30	10,721.0	1.088 Tonnes	48.0 Bushels
2018	EMERSON-FRANKLIN	ARGENTINE CANOLA	L157H (INVIGOR HEALTH) (LT)	3	1,347.0	1.080 Tonnes	47.6 Bushels
2018	EMERSON-FRANKLIN	ARGENTINE CANOLA	L255PC (INVIGOR) [6CN0122] (LT) {PSR-R}	3	885.0	1.046 Tonnes	46.1 Bushels
2013	EMERSON-FRANKLIN	ARGENTINE CANOLA	5440 (INVIGOR) [PHS04-690] (LT)	22	6,994.0	1.042 Tonnes	45.9 Bushels
2015	EMERSON-FRANKLIN	ARGENTINE CANOLA	L140P (INVIGOR) (LT) {PSR-R}	12	4,411.0	1.030 Tonnes	45.4 Bushels
2018	EMERSON-FRANKLIN	ARGENTINE CANOLA	L140P (INVIGOR) (LT) {PSR-R}	7	1,862.0	0.981 Tonnes	43.3 Bushels
2015	EMERSON-FRANKLIN	ARGENTINE CANOLA	L252 (INVIGOR) (LT)	19	5,342.0	0.967 Tonnes	42.7 Bushels
2013	EMERSON-FRANKLIN	ARGENTINE CANOLA	73-75 RR (DEKALB) (RT)	4	801.0	0.959 Tonnes	42.3 Bushels

Year	Risk Area / R.M.	Country	Variety	Farms	Acres	Yield/acre (Metric)	Yield/acre (Imperial)
2010	EMERSON-FRANKLIN	ARGENTINE CANOLA	72-65 RR (DEKALB) (RT)	3	827.0	0.952 Tonnes	42.0 Bushels
2013	EMERSON-FRANKLIN	ARGENTINE CANOLA	L150 (INVIGOR) (LT)	6	1,232.0	0.940 Tonnes	41.5 Bushels
2019	EMERSON-FRANKLIN	ARGENTINE CANOLA	2024 CL (DOW,NEXERA) CL3701975H (ST){P	3	640.0	0.931 Tonnes	41.0 Bushels
2014	EMERSON-FRANKLIN	ARGENTINE CANOLA	L140P (INVIGOR) (LT) {PSR-R}	7	1,385.0	0.928 Tonnes	40.9 Bushels
2014	EMERSON-FRANKLIN	ARGENTINE CANOLA	L252 (INVIGOR) (LT)	14	3,281.0	0.926 Tonnes	40.8 Bushels
2014	EMERSON-FRANKLIN	ARGENTINE CANOLA	L156H (INVIGOR HEALTH) (LT)	7	2,430.0	0.921 Tonnes	40.6 Bushels
2013	EMERSON-FRANKLIN	ARGENTINE CANOLA	1918 (CANTERRA) (RT)	5	845.0	0.876 Tonnes	38.6 Bushels
2014	EMERSON-FRANKLIN	ARGENTINE CANOLA	46H75 (PIONEER) (ST)	4	965.0	0.874 Tonnes	38.5 Bushels
2010	EMERSON-FRANKLIN	ARGENTINE CANOLA	1145 (INVIGOR HEALTH) (LT)	8	4,473.0	0.843 Tonnes	37.2 Bushels
2014	EMERSON-FRANKLIN	ARGENTINE CANOLA	5440 (INVIGOR) PHS04-690 (LT)	30	8,290.0	0.822 Tonnes	36.2 Bushels
2010	EMERSON-FRANKLIN	ARGENTINE CANOLA	8440 (INVIGOR) PHS04-781 (LT)	4	1,545.0	0.815 Tonnes	35.9 Bushels
2015	EMERSON-FRANKLIN	ARGENTINE CANOLA	5440 (INVIGOR) PHS04-690 (LT)	6	1,136.0	0.815 Tonnes	35.9 Bushels
2014	EMERSON-FRANKLIN	ARGENTINE CANOLA	L130 (INVIGOR) (LT)	11	4,081.0	0.772 Tonnes	34.0 Bushels
2013	EMERSON-FRANKLIN	ARGENTINE CANOLA	2016 CL (NEXERA) (ST)	3	518.0	0.768 Tonnes	33.9 Bushels
2012	EMERSON-FRANKLIN	ARGENTINE CANOLA	1145 (INVIGOR HEALTH) (LT)	5	1,237.0	0.761 Tonnes	33.5 Bushels

Year	Risk Area / R.M.	Crop	Variety	Farms	Acres	Yield/acre (Metric)	Yield/acre (Imperial)
2010	EMERSON-FRANKLIN	ARGENTINE CANOLA	45S51 (PIONEER) (RT)	7	962.0	0.759 Tonnes	33.4 Bushels
2011	EMERSON-FRANKLIN	ARGENTINE CANOLA	L130 (INVIGOR) (LT)	8	1,267.0	0.750 Tonnes	33.1 Bushels
2010	EMERSON-FRANKLIN	ARGENTINE CANOLA	5020 (INVIGOR) [RHY01/597] (LT)	7	932.0	0.740 Tonnes	32.6 Bushels
2010	EMERSON-FRANKLIN	ARGENTINE CANOLA	45H28 (PIONEER) (RT)	3	847.0	0.723 Tonnes	31.9 Bushels
2012	EMERSON-FRANKLIN	ARGENTINE CANOLA	5440 (INVIGOR) [PHS04-690] (LT)	27	6,209.0	0.723 Tonnes	31.9 Bushels
2010	EMERSON-FRANKLIN	ARGENTINE CANOLA	5440 (INVIGOR) [PHS04-690] (LT)	39	16,119.0	0.709 Tonnes	31.3 Bushels
2011	EMERSON-FRANKLIN	ARGENTINE CANOLA	8440 (INVIGOR) [PHS04-781] (LT)	4	801.0	0.705 Tonnes	31.1 Bushels
2011	EMERSON-FRANKLIN	ARGENTINE CANOLA	L150 (INVIGOR) (LT)	19	7,877.0	0.695 Tonnes	30.6 Bushels
2010	EMERSON-FRANKLIN	ARGENTINE CANOLA	5770 (INVIGOR) (LT)	7	2,248.0	0.680 Tonnes	30.0 Bushels
2011	EMERSON-FRANKLIN	ARGENTINE CANOLA	5770 (INVIGOR) (LT)	11	3,440.0	0.665 Tonnes	29.3 Bushels
2011	EMERSON-FRANKLIN	ARGENTINE CANOLA	5440 (INVIGOR) [PHS04-690] (LT)	38	12,217.0	0.645 Tonnes	28.4 Bushels
2012	EMERSON-FRANKLIN	ARGENTINE CANOLA	L150 (INVIGOR) (LT)	16	5,319.0	0.643 Tonnes	28.4 Bushels
2011	EMERSON-FRANKLIN	ARGENTINE CANOLA	45H29 (PIONEER) (RT)	3	1,214.0	0.624 Tonnes	27.5 Bushels
2012	EMERSON-FRANKLIN	ARGENTINE CANOLA	L154 (INVIGOR) (LT)	4	982.0	0.620 Tonnes	27.3 Bushels

Show entries

First

Previous

Next

Last



MMPP - Variety Yield Data Browser

Select Municipalities or MASC Risk Areas

Click or touch the 'X' (at right) in these tip balloons to hide them permanently.

Click or touch the button below to select Municipalities or MASC Risk Areas.

Municipalities

Click or touch in the select boxes (below) to select at least one item from each list. Click or touch the icon to clear all selected items.

EMERSON-FRANKLIN



Select Crop(s)

If more than one crop is selected, the Yield Variety Data will be returned, but 'Top Varieties by Acres' and 'Top Varieties by Yield' charts won't be generated.

GRAIN CORN



Select Varieties

All Varieties



Select Year Range

1993

1998

²⁰⁰²
2010

to ²⁰⁰⁷
2019

2012

2017

Search Summary

117 records returned

■■■ farm varieties grown on ■■,■■■ acres

Average Yield

■.1■ Tonnes (1■■ Bushels) per acre

Summary includes aggregate data from 'below minimum tolerance' records

Variety Yield Data

'Below Minimum Tolerance' records contain data from fewer than 3 producers or 500 acres, marked as such to retain producer anonymity. Data from these records is included in the Search Summary totals.

Copy to Clipboard

Save as XLS

Showing 1 to 50 of 117 entries

First

Previous

Next

Last

Year	Risk Area / R.M.	Grain Type	Variety	Farms	Acres	Yield/acre (Metric)	Yield/acre (Imperial)
2019	EMERSON-FRANKLIN	GRAIN CORN	P7632AM (PIONEER) (BT)(LT)(RT)	4	949.0	3.864 Tonnes	152.1 Bushels
2013	EMERSON-FRANKLIN	GRAIN CORN	39D95 (PIONEER) (BT)(LT)(RT)	8	1,413.0	3.794 Tonnes	149.4 Bushels
2019	EMERSON-FRANKLIN	GRAIN CORN	P7527AM (PIONEER) (LT)(RT)	8	2,631.0	3.736 Tonnes	147.1 Bushels
2017	EMERSON-FRANKLIN	GRAIN CORN	P7958AM (PIONEER)	7	1,460.0	3.617 Tonnes	142.4 Bushels
2019	EMERSON-FRANKLIN	GRAIN CORN	A4939G2 RIB (PRIDE) (RIB)	3	1,267.0	3.609 Tonnes	142.1 Bushels
2018	EMERSON-FRANKLIN	GRAIN CORN	P7958AM (PIONEER)	5	1,742.0	3.448 Tonnes	135.8 Bushels

Year	Risk Area / R.M.	Crop	Variety	Farms	Acres	Yield/acre (Metric)	Yield/acre (Imperial)
2013	EMERSON-FRANKLIN	GRAIN CORN	DKC30-07 (DEKALB) (RT)	5	950.0	3.443 Tonnes	135.5 Bushels
2017	EMERSON-FRANKLIN	GRAIN CORN	P7632AM (PIONEER) (BT)(LT)(RT)	8	2,365.0	3.425 Tonnes	134.8 Bushels
2018	EMERSON-FRANKLIN	GRAIN CORN	P7632AM (PIONEER) (BT)(LT)(RT)	5	935.0	3.389 Tonnes	133.4 Bushels
2013	EMERSON-FRANKLIN	GRAIN CORN	39D97 (PIONEER) (BT)(LT)(RT)	4	687.0	3.363 Tonnes	132.4 Bushels
2013	EMERSON-FRANKLIN	GRAIN CORN	DKC27-54 (DEKALB)	4	1,183.0	3.347 Tonnes	131.8 Bushels
2017	EMERSON-FRANKLIN	GRAIN CORN	DKC33-78RIB (DEKALB) (RIB)	4	893.0	3.331 Tonnes	131.1 Bushels
2013	EMERSON-FRANKLIN	GRAIN CORN	DKC26-28RIB (DEKALB) (BT)(RT)(RIB)	5	807.0	3.302 Tonnes	130.0 Bushels
2019	EMERSON-FRANKLIN	GRAIN CORN	DKC33-78RIB (DEKALB) (RIB)	9	2,322.0	3.274 Tonnes	128.9 Bushels
2018	EMERSON-FRANKLIN	GRAIN CORN	P7527AM (PIONEER) (LT)(RT)	11	1,831.0	3.243 Tonnes	127.7 Bushels
2012	EMERSON-FRANKLIN	GRAIN CORN	P7443R (PIONEER) (RT)	5	1,300.0	3.209 Tonnes	126.3 Bushels
2012	EMERSON-FRANKLIN	GRAIN CORN	39D97 (PIONEER) (BT)(LT)(RT)	4	593.0	3.177 Tonnes	125.1 Bushels
2010	EMERSON-FRANKLIN	GRAIN CORN	39D95 (PIONEER) (BT)(LT)(RT)	4	553.0	3.165 Tonnes	124.6 Bushels
2018	EMERSON-FRANKLIN	GRAIN CORN	DKC33-78RIB (DEKALB) (RIB)	16	3,157.0	3.126 Tonnes	123.1 Bushels
2014	EMERSON-FRANKLIN	GRAIN CORN	39D95 (PIONEER) (BT)(LT)(RT)	6	921.0	3.117 Tonnes	122.7 Bushels
2018	EMERSON-FRANKLIN	GRAIN CORN	A4939G2 RIB (PRIDE) (RIB)	3	1,071.0	3.007 Tonnes	118.4 Bushels

Year	Risk Area / R.M.	Crop	Variety	Farms	Acre	Yield/acre (Metric)	Yield/acre (Imperial)
2013	EMERSON-FRANKLIN	GRAIN CORN	P7443R (PIONEER) (RT)	3	697.0	2.972 Tonnes	117.0 Bushels
2010	EMERSON-FRANKLIN	GRAIN CORN	39D97 (PIONEER) (BT)(LT)(RT)	3	824.0	2.925 Tonnes	115.2 Bushels
2017	EMERSON-FRANKLIN	GRAIN CORN	DKC27-55RIB (DEKALB) (BT)(RIB)	5	1,057.0	2.836 Tonnes	111.6 Bushels
2016	EMERSON-FRANKLIN	GRAIN CORN	P7632AM (PIONEER) (BT)(LT)(RT)	5	1,918.0	2.773 Tonnes	109.2 Bushels
2014	EMERSON-FRANKLIN	GRAIN CORN	39D97 (PIONEER) (BT)(LT)(RT)	5	1,065.0	2.770 Tonnes	109.1 Bushels
2012	EMERSON-FRANKLIN	GRAIN CORN	DEKALB DKC26-79 (RT)(BT)	4	1,474.0	2.718 Tonnes	107.0 Bushels
2011	EMERSON-FRANKLIN	GRAIN CORN	39D97 (PIONEER) (BT)(LT)(RT)	3	895.0	2.512 Tonnes	98.9 Bushels
2011	EMERSON-FRANKLIN	GRAIN CORN	DEKALB DKC26-79 (RT)(BT)	3	923.0	2.388 Tonnes	94.0 Bushels
2011	EMERSON-FRANKLIN	GRAIN CORN	39D95 (PIONEER) (BT)(LT)(RT)	7	838.0	2.329 Tonnes	91.7 Bushels
2016	EMERSON-FRANKLIN	GRAIN CORN	P7958AM (PIONEER)	4	939.0	2.058 Tonnes	81.0 Bushels
2010	EMERSON-FRANKLIN	GRAIN CORN	DEKALB DKC26-79 (RT)(BT)	Below	Minimum	Tolerance	
2010	EMERSON-FRANKLIN	GRAIN CORN	P7213R (PIONEER) (RT)	Below	Minimum	Tolerance	
2010	EMERSON-FRANKLIN	GRAIN CORN	P7535HR (PIONEER) (BT)(LT)(RT)	Below	Minimum	Tolerance	
2010	EMERSON-FRANKLIN	GRAIN CORN	P7535R (PIONEER) (RT)	Below	Minimum	Tolerance	

Year	Risk Area / R.M.	Crop	Variety	Farms	Acres	Yield/acre (Metric)	Yield/acre (Imperial)
2010	EMERSON-FRANKLIN	GRAIN CORN	39B90 (PIONEER) (RT)	Below	Minimum	Tolerance	
2010	EMERSON-FRANKLIN	GRAIN CORN	39B94 (PIONEER) (BT)(LT)(RT)	Below	Minimum	Tolerance	
2011	EMERSON-FRANKLIN	GRAIN CORN	DKC26-79 (DEKALB) (RT)	Below	Minimum	Tolerance	
2011	EMERSON-FRANKLIN	GRAIN CORN	P7213R (PIONEER) (RT)	Below	Minimum	Tolerance	
2011	EMERSON-FRANKLIN	GRAIN CORN	P7535HR (PIONEER) (BT)(LT)(RT)	Below	Minimum	Tolerance	
2011	EMERSON-FRANKLIN	GRAIN CORN	39B94 (PIONEER) (BT)(LT)(RT)	Below	Minimum	Tolerance	
2011	EMERSON-FRANKLIN	GRAIN CORN	39D80 (PIONEER) (RT)	Below	Minimum	Tolerance	
2012	EMERSON-FRANKLIN	GRAIN CORN	DKC27-45 (DEKALB) (BT)(RT)	Below	Minimum	Tolerance	
2012	EMERSON-FRANKLIN	GRAIN CORN	DKC27-54 (DEKALB)	Below	Minimum	Tolerance	
2012	EMERSON-FRANKLIN	GRAIN CORN	DKC30-20 (DEKALB) (BT)(RT)	Below	Minimum	Tolerance	
2012	EMERSON-FRANKLIN	GRAIN CORN	MZ 1261BR (MAIZEX) (BT)(RT)	Below	Minimum	Tolerance	
2012	EMERSON-FRANKLIN	GRAIN CORN	P7213R (PIONEER) (RT)	Below	Minimum	Tolerance	
2012	EMERSON-FRANKLIN	GRAIN CORN	P7535HR (PIONEER) (BT)(LT)(RT)	Below	Minimum	Tolerance	
2012	EMERSON-FRANKLIN	GRAIN CORN	39B94 (PIONEER) (BT)(LT)(RT)	Below	Minimum	Tolerance	

Year	Risk Area / R.M.	Crop	Variety	Farms	Acres	Yield/acre (Metric)	Yield/acre (Imperial)
2012	EMERSON-FRANKLIN	GRAIN CORN	39D95 (PIONEER) (BT)(LT)(RT)	Below	Minimum	Tolerance	

Show entries

[First](#) [Previous](#) [Next](#) [Last](#)

Copyright © 2020 Manitoba Agricultural Services Corporation. All rights reserved.



MMPP - Variety Yield Data Browser

Select Municipalities or MASC Risk Areas

Click or touch the 'X' (at right) in these tip balloons to hide them permanently.

Click or touch the button below to select Municipalities or MASC Risk Areas.

Click or touch in the select boxes (below) to select at least one item from each list. Click or touch the icon to clear all selected items.

Select Crop(s)

If more than one crop is selected, the Yield Variety Data will be returned, but 'Top Varieties by Acres' and 'Top Varieties by Yield' charts won't be generated.

Select Varieties

Select Year Range

1993

1998

²⁰⁰²
2010

to ²⁰⁰⁷
2019

2012

2017

Search Summary

68 records returned

■ farm varieties grown on 1■,■■■.0 acres

Average Yield

1.■■■ Tonnes (■■■ Bushels) per acre

Summary includes aggregate data from 'below minimum tolerance' records

Variety Yield Data

'Below Minimum Tolerance' records contain data from fewer than 3 producers or 500 acres, marked as such to retain producer anonymity. Data from these records is included in the Search Summary totals.

Copy to Clipboard

Save as XLS

Showing 1 to 50 of 68 entries

First Previous Next Last

Year	Risk Area / R.M.	Season	Variety	Farms	Acres	Yield/acre (Metric)	Yield/acre (Imperial)
2017	EMERSON-FRANKLIN	RED SPRING WHEAT	CARDALE (BW429)	10	3,430.0	2.125 Tonnes	78.1 Bushels
2017	EMERSON-FRANKLIN	RED SPRING WHEAT	AAC BRANDON (BW 932)	29	11,068.0	2.099 Tonnes	77.1 Bushels
2018	EMERSON-FRANKLIN	RED SPRING WHEAT	AAC BRANDON (BW 932)	43	19,194.0	1.951 Tonnes	71.7 Bushels
2017	EMERSON-FRANKLIN	RED SPRING WHEAT	CARBERRY (BW874)	3	1,417.0	1.940 Tonnes	71.3 Bushels
2019	EMERSON-FRANKLIN	RED SPRING WHEAT	AAC BRANDON (BW 932)	49	22,496.0	1.773 Tonnes	65.1 Bushels

Year	Risk Area / R.M.	Region	Variety	Farms	Acres	Yield/acre (Metric)	Yield/acre (Imperial)
2019	EMERSON-FRANKLIN	RED SPRING WHEAT	AAC VIEWFIELD (FP GENETICS) BW965 EXP	3	1,145.0	1.755 Tonnes	64.5 Bushels
2014	EMERSON-FRANKLIN	RED SPRING WHEAT	CARDALE (BW429)	16	4,248.0	1.747 Tonnes	64.2 Bushels
2013	EMERSON-FRANKLIN	RED SPRING WHEAT	CARBERRY (BW874)	28	8,533.0	1.744 Tonnes	64.1 Bushels
2018	EMERSON-FRANKLIN	RED SPRING WHEAT	AAC VIEWFIELD (FP GENETICS) BW965 EXP	5	1,565.0	1.735 Tonnes	63.7 Bushels
2013	EMERSON-FRANKLIN	RED SPRING WHEAT	GLENN	18	4,890.0	1.727 Tonnes	63.5 Bushels
2012	EMERSON-FRANKLIN	RED SPRING WHEAT	GLENN	16	5,970.0	1.719 Tonnes	63.2 Bushels
2018	EMERSON-FRANKLIN	RED SPRING WHEAT	AAC ELIE(BW931)	4	1,326.0	1.698 Tonnes	62.4 Bushels
2012	EMERSON-FRANKLIN	RED SPRING WHEAT	CARBERRY (BW874)	17	3,603.0	1.681 Tonnes	61.8 Bushels
2012	EMERSON-FRANKLIN	RED SPRING WHEAT	KANE (BW342)	21	7,072.0	1.654 Tonnes	60.8 Bushels
2012	EMERSON-FRANKLIN	RED SPRING WHEAT	AC BARRIE (BW 661)	4	606.0	1.603 Tonnes	58.9 Bushels
2015	EMERSON-FRANKLIN	RED SPRING WHEAT	GLENN	3	1,470.0	1.559 Tonnes	57.3 Bushels
2014	EMERSON-FRANKLIN	RED SPRING WHEAT	KANE (BW342)	4	978.0	1.555 Tonnes	57.1 Bushels
2013	EMERSON-FRANKLIN	RED SPRING WHEAT	KANE (BW342)	9	2,732.0	1.542 Tonnes	56.6 Bushels
2015	EMERSON-FRANKLIN	RED SPRING WHEAT	CARBERRY (BW874)	9	2,206.0	1.524 Tonnes	56.0 Bushels

Year	Risk Area / R.M.	County	Variety	Farms	Acres	Yield/acre (Metric)	Yield/acre (Imperial)
2014	EMERSON-FRANKLIN	RED SPRING WHEAT	CARBERRY (BW874)	28	6,574.0	1.522 Tonnes	55.9 Bushels
2014	EMERSON-FRANKLIN	RED SPRING WHEAT	GLENN	9	3,129.0	1.491 Tonnes	54.8 Bushels
2015	EMERSON-FRANKLIN	RED SPRING WHEAT	CARDALE (BW429)	35	13,485.0	1.459 Tonnes	53.6 Bushels
2010	EMERSON-FRANKLIN	RED SPRING WHEAT	GLENN	28	9,380.0	1.274 Tonnes	46.8 Bushels
2010	EMERSON-FRANKLIN	RED SPRING WHEAT	KANE (BW342)	30	10,974.0	1.157 Tonnes	42.5 Bushels
2011	EMERSON-FRANKLIN	RED SPRING WHEAT	KANE (BW342)	25	8,443.0	1.069 Tonnes	39.3 Bushels
2011	EMERSON-FRANKLIN	RED SPRING WHEAT	AC BARRIE (BW 661)	6	949.0	1.049 Tonnes	38.6 Bushels
2011	EMERSON-FRANKLIN	RED SPRING WHEAT	GLENN	21	8,007.0	1.004 Tonnes	36.9 Bushels
2016	EMERSON-FRANKLIN	RED SPRING WHEAT	AAC BRANDON (BW 932)	17	4,870.0	0.990 Tonnes	36.4 Bushels
2010	EMERSON-FRANKLIN	RED SPRING WHEAT	AC DOMAIN (BW 148)	3	578.0	0.985 Tonnes	36.2 Bushels
2016	EMERSON-FRANKLIN	RED SPRING WHEAT	CARBERRY (BW874)	7	1,318.0	0.978 Tonnes	35.9 Bushels
2010	EMERSON-FRANKLIN	RED SPRING WHEAT	AC BARRIE (BW 661)	11	3,227.0	0.947 Tonnes	34.8 Bushels
2016	EMERSON-FRANKLIN	RED SPRING WHEAT	CARDALE (BW429)	25	6,828.0	0.888 Tonnes	32.6 Bushels
2016	EMERSON-FRANKLIN	RED SPRING WHEAT	GLENN	4	1,316.0	0.887 Tonnes	32.6 Bushels

Year	Risk Area / R.M.	County	Variety	Farms	Acres	Yield/acre (Metric)	Yield/acre (Imperial)
2016	EMERSON-FRANKLIN	RED SPRING WHEAT	AAC ELIE(BW931)	4	1,038.0	0.866 Tonnes	31.8 Bushels
2010	EMERSON-FRANKLIN	RED SPRING WHEAT	WASKADA (BW 357)	Below	Minimum	Tolerance	
2010	EMERSON-FRANKLIN	RED SPRING WHEAT	5602HR (BW297)	Below	Minimum	Tolerance	
2011	EMERSON-FRANKLIN	RED SPRING WHEAT	AC DOMAIN (BW 148)	Below	Minimum	Tolerance	
2011	EMERSON-FRANKLIN	RED SPRING WHEAT	CDC GO (BW781)	Below	Minimum	Tolerance	
2011	EMERSON-FRANKLIN	RED SPRING WHEAT	5601HR (BW256)	Below	Minimum	Tolerance	
2011	EMERSON-FRANKLIN	RED SPRING WHEAT	5603 HR	Below	Minimum	Tolerance	
2012	EMERSON-FRANKLIN	RED SPRING WHEAT	AC DOMAIN (BW 148)	Below	Minimum	Tolerance	
2012	EMERSON-FRANKLIN	RED SPRING WHEAT	CDC GO (BW781)	Below	Minimum	Tolerance	
2013	EMERSON-FRANKLIN	RED SPRING WHEAT	AC DOMAIN (BW 148)	Below	Minimum	Tolerance	
2013	EMERSON-FRANKLIN	RED SPRING WHEAT	5604HR CL (BW 878)	Below	Minimum	Tolerance	
2014	EMERSON-FRANKLIN	RED SPRING WHEAT	AC BARRIE (BW 661)	Below	Minimum	Tolerance	
2014	EMERSON-FRANKLIN	RED SPRING WHEAT	CDC STANLEY (BW880)	Below	Minimum	Tolerance	
2014	EMERSON-FRANKLIN	RED SPRING WHEAT	CDC VR MORRIS (BW423)	Below	Minimum	Tolerance	

Year	Risk Area / R.M.	Area	Variety	Farms	Area	Yield/acre (Metric)	Yield/acre (Imperial)
2014	EMERSON-FRANKLIN	RED SPRING WHEAT	5604HR CL (BW 878)	Below	Minimum	Tolerance	
2015	EMERSON-FRANKLIN	RED SPRING WHEAT	AAC BRANDON (BW 932)	Below	Minimum	Tolerance	
2015	EMERSON-FRANKLIN	RED SPRING WHEAT	KANE (BW342)	Below	Minimum	Tolerance	

Show entries



[First](#) [Previous](#) [Next](#) [Last](#)



Copyright © 2020 Manitoba Agricultural Services Corporation. All rights reserved.





MMPP - Variety Yield Data Browser

Select Municipalities or MASC Risk Areas

 Click or touch the 'X' (at right) in these tip balloons to hide them permanently. 

 Click or touch the button below to select Municipalities or MASC Risk Areas. 



Municipalities

 Click or touch in the select boxes (below) to select at least one item from each list. Click or touch the  icon to clear all selected items.

EMERSON-FRANKLIN



Select Crop(s)

 If more than one crop is selected, the Yield Variety Data will be returned, but 'Top Varieties by Acres' and 'Top Varieties by Yield' charts won't be generated. 

SOYBEANS



Select Varieties

All Varieties



Select Year Range

1993

1998

²⁰⁰²
2010

to ²⁰⁰⁷
2019

2012

2017

Search Summary

280 records returned

1,111 farm varieties grown on **500,000.0** acres

Average Yield

0.000 Tonnes (**13.3** Bushels) per acre

Summary includes aggregate data from 'below minimum tolerance' records

Variety Yield Data

'Below Minimum Tolerance' records contain data from fewer than 3 producers or 500 acres, marked as such to retain producer anonymity. Data from these records is included in the Search Summary totals.

Copy to Clipboard

Save as XLS

Showing 1 to 50 of 280 entries

First Previous Next Last

Year	Risk Area / R.M.	Crop	Variety	Farms	Acres	Yield/acre (Metric)	
2013	EMERSON-FRANKLIN	SOYBEANS	LS 005R22 (LEGEND)(RT)	6	1,479.0	1.278 Tonnes	47
2013	EMERSON-FRANKLIN	SOYBEANS	24-61RY (DEKALB) (RT)	4	1,495.0	1.254 Tonnes	46
2013	EMERSON-FRANKLIN	SOYBEANS	NSC ELIE RR2Y (NSGENETICS) (RT)	3	580.0	1.216 Tonnes	44
2013	EMERSON-FRANKLIN	SOYBEANS	25-10RY (DEKALB) (RT)	22	9,717.0	1.212 Tonnes	44
2013	EMERSON-FRANKLIN	SOYBEANS	NSC RICHER RR2Y (NSGENETICS) (RT)	27	8,053.0	1.191 Tonnes	43
2013	EMERSON-FRANKLIN	SOYBEANS	NSC OSBORNE RR2Y (NORTHSTAR) [MK0109A4]	8	2,586.0	1.159 Tonnes	42
2013	EMERSON-FRANKLIN	SOYBEANS	LS 006R21 (LEGEND)	3	905.0	1.154 Tonnes	42

Year	Risk Area / R.M.	Crop	Variety	Farms	Acres	Yield/acre (Metric)	Yield (Metric)
2013	EMERSON-FRANKLIN	SOYBEANS	24-10RY (DEKALB) (RT)	20	7,724.0	1.142 Tonnes	42
2013	EMERSON-FRANKLIN	SOYBEANS	TH 32004R2Y (THUNDER) (RT)	3	534.0	1.137 Tonnes	41
2013	EMERSON-FRANKLIN	SOYBEANS	900Y61 (PIONEER) (RT)	4	665.0	1.110 Tonnes	40
2017	EMERSON-FRANKLIN	SOYBEANS	DKB005-52 (DEKALB) (RT)	4	1,460.0	1.111 Tonnes	40
2015	EMERSON-FRANKLIN	SOYBEANS	LS 004R21 (LEGEND)(RT)	3	560.0	1.085 Tonnes	39
2010	EMERSON-FRANKLIN	SOYBEANS	25-04R (DEKALB) (RT)	14	5,284.0	1.080 Tonnes	39
2010	EMERSON-FRANKLIN	SOYBEANS	OAC PRUDENCE (SECAN) OAC 97-23	5	2,910.0	1.077 Tonnes	39
2010	EMERSON-FRANKLIN	SOYBEANS	90M01 (PIONEER) PH0502 (RT)	12	2,834.0	1.076 Tonnes	39
2013	EMERSON-FRANKLIN	SOYBEANS	NSC LIBAU RR2Y (NSGENETICS) (RT)	4	1,142.0	1.070 Tonnes	39
2013	EMERSON-FRANKLIN	SOYBEANS	EXP003 R2 (PRIDE) (RT)	3	1,729.0	1.050 Tonnes	38
2014	EMERSON-FRANKLIN	SOYBEANS	NSC RICHER RR2Y (NSGENETICS) (RT)	34	9,958.0	1.051 Tonnes	38
2010	EMERSON-FRANKLIN	SOYBEANS	ISIS RR (ELITE) CFS208RR (RT)	6	1,197.0	1.019 Tonnes	37
2017	EMERSON-FRANKLIN	SOYBEANS	S007-Y4 RR2Y (SYNGENTA) (RT)	3	700.0	1.014 Tonnes	37
2010	EMERSON-FRANKLIN	SOYBEANS	LS 0065RR (LEGEND) X0065RR (RT)	8	1,920.0	1.013 Tonnes	37
2018	EMERSON-FRANKLIN	SOYBEANS	P007A90R (PIONEER) (RT)	4	570.0	1.013 Tonnes	37
2012	EMERSON-FRANKLIN	SOYBEANS	NSC RICHER RR2Y (NSGENETICS) (RT)	7	1,671.0	1.005 Tonnes	36
2014	EMERSON-FRANKLIN	SOYBEANS	25-10RY (DEKALB) (RT)	17	8,759.0	1.003 Tonnes	36
2014	EMERSON-FRANKLIN	SOYBEANS	S007-Y4 RR2Y (SYNGENTA) (RT)	5	1,236.0	1.002 Tonnes	36
2015	EMERSON-FRANKLIN	SOYBEANS	NSC RICHER RR2Y (NSGENETICS) (RT)	43	15,146.0	0.992 Tonnes	36

Year	Risk Area / R.M.	Crop	Variety	Farms	Acres	Yield/acre (Metric)	Yield (Metric)
2012	EMERSON-FRANKLIN	SOYBEANS	25-10RY (DEKALB) (RT)	34	13,470.0	0.987 Tonnes	36
2012	EMERSON-FRANKLIN	SOYBEANS	LS 005R22 (LEGEND)(RT)	6	1,451.0	0.977 Tonnes	35
2012	EMERSON-FRANKLIN	SOYBEANS	24-10RY (DEKALB) (RT)	7	2,481.0	0.971 Tonnes	35
2015	EMERSON-FRANKLIN	SOYBEANS	NSC OSBORNE RR2Y (NORTHSTAR) [MK0109A4]	6	1,545.0	0.963 Tonnes	35
2016	EMERSON-FRANKLIN	SOYBEANS	AKRAS R2 (BRETT YOUNG) (RT)	6	977.0	0.964 Tonnes	35
2011	EMERSON-FRANKLIN	SOYBEANS	900Y71 (PIONEER) (RT)	4	975.0	0.952 Tonnes	35
2012	EMERSON-FRANKLIN	SOYBEANS	NSC OSBORNE RR2Y (NORTHSTAR) [MK0109A4]	9	3,412.0	0.947 Tonnes	34
2011	EMERSON-FRANKLIN	SOYBEANS	LS 0065RR (LEGEND) [X0065RR] (RT)	9	1,944.0	0.942 Tonnes	34
2015	EMERSON-FRANKLIN	SOYBEANS	25-10RY (DEKALB) (RT)	18	9,675.0	0.937 Tonnes	34
2012	EMERSON-FRANKLIN	SOYBEANS	LS 005R21 (LEGEND)(RT)	3	950.0	0.928 Tonnes	34
2012	EMERSON-FRANKLIN	SOYBEANS	NSC ELIE RR2Y (NSGENETICS) (RT)	20	5,917.0	0.927 Tonnes	34
2014	EMERSON-FRANKLIN	SOYBEANS	24-10RY (DEKALB) (RT)	10	4,195.0	0.920 Tonnes	33
2017	EMERSON-FRANKLIN	SOYBEANS	LS ECLIPSE (LEGEND) [MKZ314A2-COYNN] (RT)	6	964.0	0.921 Tonnes	33
2018	EMERSON-FRANKLIN	SOYBEANS	S006-W5 (SYNGENTA)[AR12010501][X2R00753]	3	678.0	0.916 Tonnes	33
2018	EMERSON-FRANKLIN	SOYBEANS	S008-N2 (SYNGENTA) [AR121542][X2R00865](9	2,187.0	0.917 Tonnes	33
2017	EMERSON-FRANKLIN	SOYBEANS	LS 003R24N (LEGEND) (RT)	4	788.0	0.912 Tonnes	33
2012	EMERSON-FRANKLIN	SOYBEANS	900Y61 (PIONEER) (RT)	11	2,639.0	0.909 Tonnes	33
2014	EMERSON-FRANKLIN	SOYBEANS	NSC LIBAU RR2Y (NSGENETICS) (RT)	6	1,004.0	0.910 Tonnes	33
2017	EMERSON-FRANKLIN	SOYBEANS	NSC STARBUCK (NSGENETICS) (RR2X)	4	750.0	0.908 Tonnes	33

Year	Risk Area / R.M.	Crop	Variety	Farms	Acres	Yield/acre (Metric)	Count
2015	EMERSON-FRANKLIN	SOYBEANS	S007-Y4 RR2Y (SYNGENTA) (RT)	5	1,714.0	0.905 Tonnes	33
2015	EMERSON-FRANKLIN	SOYBEANS	LS 005R22 (LEGEND)(RT)	4	1,136.0	0.901 Tonnes	33
2015	EMERSON-FRANKLIN	SOYBEANS	P008T70R (PIONEER) (RT)	9	1,476.0	0.899 Tonnes	33
2018	EMERSON-FRANKLIN	SOYBEANS	24-12RY (DEKALB) (RT)	8	1,425.0	0.897 Tonnes	33
2016	EMERSON-FRANKLIN	SOYBEANS	S007-Y4 RR2Y (SYNGENTA) (RT)	5	920.0	0.894 Tonnes	32

Show entries

[First](#)
[Previous](#)
[Next](#)
[Last](#)

Copyright © 2020 Manitoba Agricultural Services Corporation. All rights reserved.

1a - Pigs

Operation Name:

Operation Type	Storage Type	Volatilization	Animal Numbers (Places)	N Excreted Per Herd Adjusted for Storage N Loss (lb/yr/herd)	P2O5 Excreted Per Herd Per Year (lb/yr/herd)
Gilts (Purchased)	Liquid Uncovered Earthen	30%		0	0
Boars	Liquid Uncovered Earthen	30%		0	0
Weanlings/Nursery	Liquid Uncovered Earthen	30%		0	0
Growers/Finishers	Liquid Uncovered Earthen	30%	12000	294952	162074
Sows, farrow to 6.2 kg	Liquid Uncovered Earthen	30%		0	0
Sows, farrow to 28 kg	Liquid Uncovered Earthen	30%		0	0
Sows, farrow to finish	Liquid Uncovered Earthen	30%		0	0

Last Revised February 12, 2020

2 - Crop Rotation

Operation Name:

Enter the operation name on the livestock tab(s)

Crop	Removal		Uptake		Yield	Units	Acreage	Removal		Uptake
	P2O5	N	N	Units				P2O5 (lb)	N (lb)	N (lb)
Alfalfa	13.8	58	58	lb/ton		ton/ac		-	-	-
Barley Grain	0.42	0.97	1.39	lb/bu		bu/ac		-	-	-
Barley Silage	11.8	34.4	34.4	lb/ton		ton/ac		-	-	-
Canola	1.04	1.93	3.19	lb/bu	36.3	bu/ac	544	20537	38112	62994
Corn Grain	0.44	0.97	1.53	lb/bu	123.6	bu/ac	640	34806	76731	121029
Corn Silage	12.7	31.2	31.2	lb/ton		tons/ac		-	-	-
Dry Edible Beans	1.39	4.17		lb/cwt		cwt/ac		-	-	-
Fababeans	1.79	5.02	8.4	lb/cwt		cwt/ac		-	-	-
Flax	0.65	2.13	2.88	lb/bu		bu/ac		-	-	-
Grass Hay	10	34.2	34.2	lb/ton		tons/ac		-	-	-
Lentils	1.03	3.39	5.08	lb/cwt		cwt/ac		-	-	-
Oats	0.26	0.62	1.07	lb/bu		bu/ac		-	-	-
Pasture (grazed)	10	34.2	34.2	lb/ton	0.5	ton/ac		-	-	-
Peas	0.69	2.34	3.06	lb/bu		bu/ac		-	-	-
Potatoes	0.09	0.32	0.57	lb/cwt		cwt/ac		-	-	-
Rye	0.45	1.06	1.67	lb/bu		bu/ac		-	-	-
Soybeans	0.84	3.87	5.2	lb/bu	33.3	bu/ac	543	15189	69977	94026
Sunflower	1.1	2.8		lb/cwt		cwt/ac		-	-	-
Wheat - Spring	0.59	1.5	2.11	lb/bu	56.7	bu/ac	543	18165	46182	64963
Wheat - Winter	0.51	1.04	1.35	lb/bu		bu/ac		-	-	-
Total Acres							2270	88697	231002	343011
Estimated Average Removal/Uptake (lb/ac)								39.1	101.8	151.1
Acres in Hanover and La Broquerie										
Proportion in Hanover or La Broquerie							0%			
Additional Acres										
Crop Planned on Additional Acres										
Total Acreage							2270			
*Notes:	Enter the number of acres that are in the RM's of Hanover or La Broquerie in cell H26. Additional acres include acres for which crop removal or soil data is limited or unavailable.									

3 - Farm Excretion

Operation Name: Enter the operation name on the livestock tab(s)

Species	Animal Category/Operation type	N (lb/year)	P2O5 (lb/year)
Pigs	Boars	0	0
	Weanlings/Nursery	0	0
	Growers/Finishers	294952	162074
	Sows, farrow to 5 kg	0	0
	Sows, farrow to 23 kg	0	0
	Sows, farrow to finish	0	0
Beef	Mature Cows and Bred Heifers, plus associated livestock	0	0
	Feedlot Cattle - long keep	0	0
	Feedlot Cattle - short keep	0	0
	Backgrounders - pasture	0	0
	Backgrounders - confined	0	0
Dairy	Lactating cow	0	0
	Lactating First Calf Heifer	0	0
	Dry cow	0	0
	Calf, 0-3 months	0	0
	Calf, 4-13 months	0	0
	Replacements, >13 months	0	0
	Mature Cows, plus assoc livestock	0	0
Sheep	Ewes	0	0
	Replacement Ewes	0	0
	Rams	0	0
	Lambs	0	0
	Ewes, plus assoc livestock	0	0
	Feeder	0	0
Chickens	Light Broilers	0	0
	Broilers	0	0
	Broiler Breeder Pullets	0	0
	Broiler Breeder Hens	0	0
Layers	White Layer Pullets	0	0
	White Layer Hens	0	0
	White Breeder Pullets	0	0
	White Breeder Hens	0	0
	Brown Layer Pullets	0	0
	Brown Layer Hens	0	0
	Brown Breeder Pullets	0	0
	Brown Breeder Hens	0	0
Turkeys	Broiler Turkey (0-9 wks)	0	0
	Hen Turkey (0-11 wks)	0	0
	Heavy Hens (0-14 wks)	0	0
	Toms (0-14 wks)	0	0
	Breeding Hen Growers (0-30 wks)	0	0
	Breeding Hens (31-End of Lay)	0	0
	Breeding Tom Grower (0-17 wks)	0	0
	Breeding Tom Grower (17-30 wks)	0	0
	Breeding Tom (31-End of Lay)	0	0
Total		294952	162074

Note: Be sure all livestock species on your farm are represented in this table, not just the livestock in the proposed expansion.

4 - Land Base Summary**Operation Name:** Enter the operation name on the livestock tab(s)

Nutrients Excreted		lbs
Nitrogen		294952
Phosphorus (P2O5)		162074
Crop Nutrient Use		lb/ac
Average Crop N Uptake		151.1
Average Crop Phosphorus (P2O5) Removal		39.1
Operation-specific Phosphorus (P2O5) Allowance		78.1
Land Available		2270
Land Base Required		acres
Acres for Nitrogen		1952
Acres for Phosphorus (P2O5)		2074
Phosphorus Balance		acres
Acres for Phosphorus Balance (1X)		4148

Note: For lands located in Hanover and/or La Broquerie, the acres required for phosphorus are based on phosphorus balance (1X). For other lands, the acres required for phosphorus are based on twice crop phosphorus removal (2X). Land requirements for operations with lands inside and outside Hanover and/or La Broquerie are based on a weighted average.

Last revised November 26, 2019

CROP ROTATION TABLE

A	B	C	D	E
Expected Crops in the Rotation	Acreage	Historical Yield	Units	Source of Yield Information
Argentine Canola	544	36.3	bu/acre	MASC (RM Variety Yield Data Browser)
Red Spring Wheat	543	56.7 (plus straw removal)	bu/acre	MASC (RM Variety Yield Data Browser)
Soybeans	543	33.3	bu/acre	MASC (RM Variety Yield Data Browser)
Grain Corn	640	123.6	bu/acre	MASC (RM Variety Yield Data Browser)
Total Net Acreage for Manure Application	2270			

- A. List all of the crop(s) to be grown in the rotation on the acreage that will receive manure.
- B. Indicate the average acreage for each crop over the rotation. For example, if there are 720 suitable acres available for manure and approximately 40 these acres will be used to grow canola, enter 288. The total of column B should add up to Total Net Acreage for Manure Application provided in the Manure Application Field Characteristic Table.
- C. Enter the historical yield average for each crop. Long-term yield averages can be determined using MASC data (<http://www.masc.mb.ca/masc.nsf/index.html?OpenPage>) or on-farm yield records. If on-farm yield records are used, please provide copies.
- D. Enter the units for the yields provided (e.g. bu/acre, tons/acre).
- E. Enter the source of the historical yield average provided.

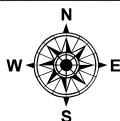
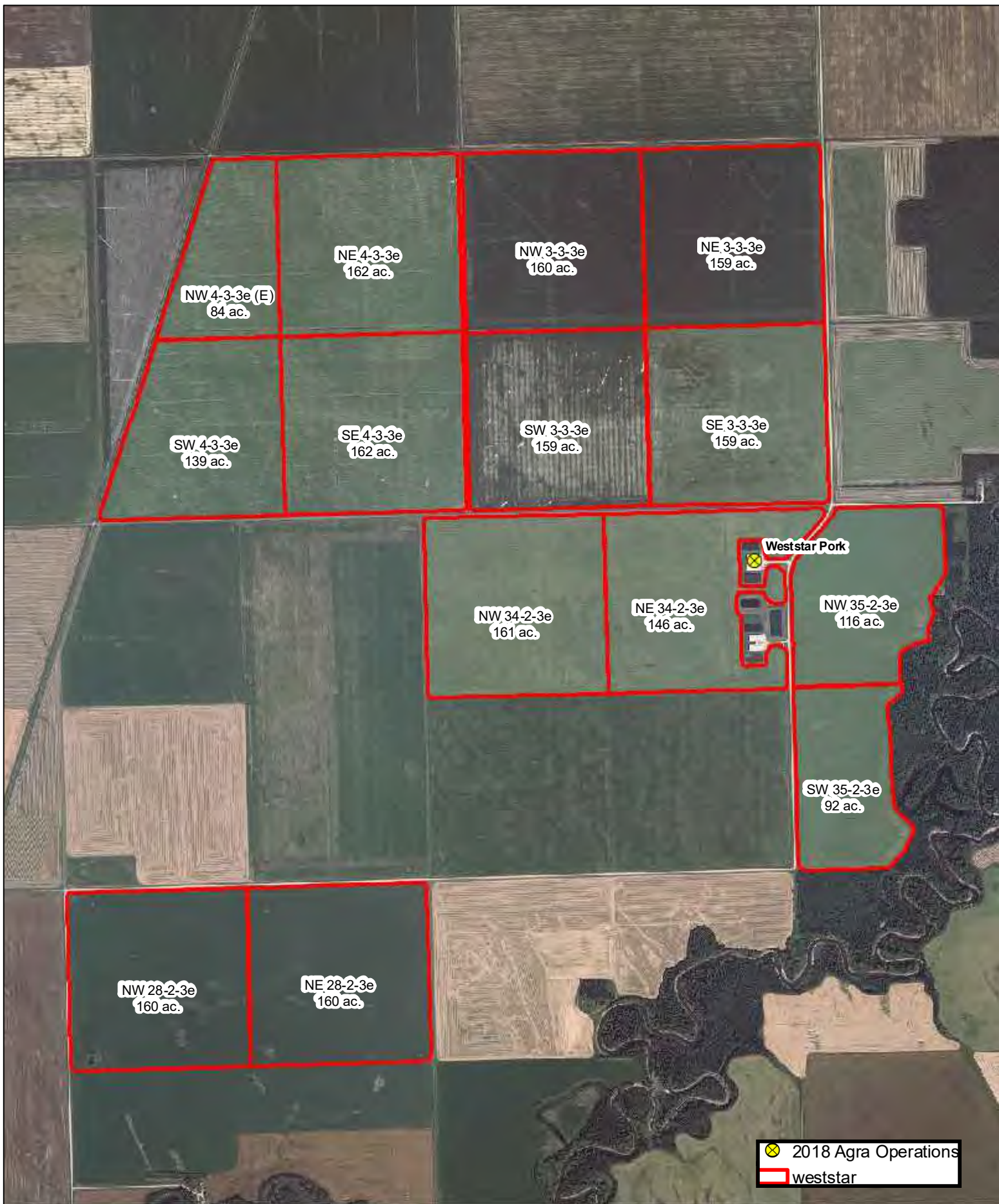


MANURE APPLICATION FIELD CHARACTERISTICS TABLE

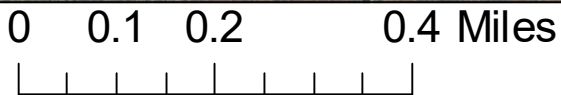
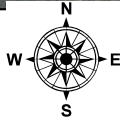
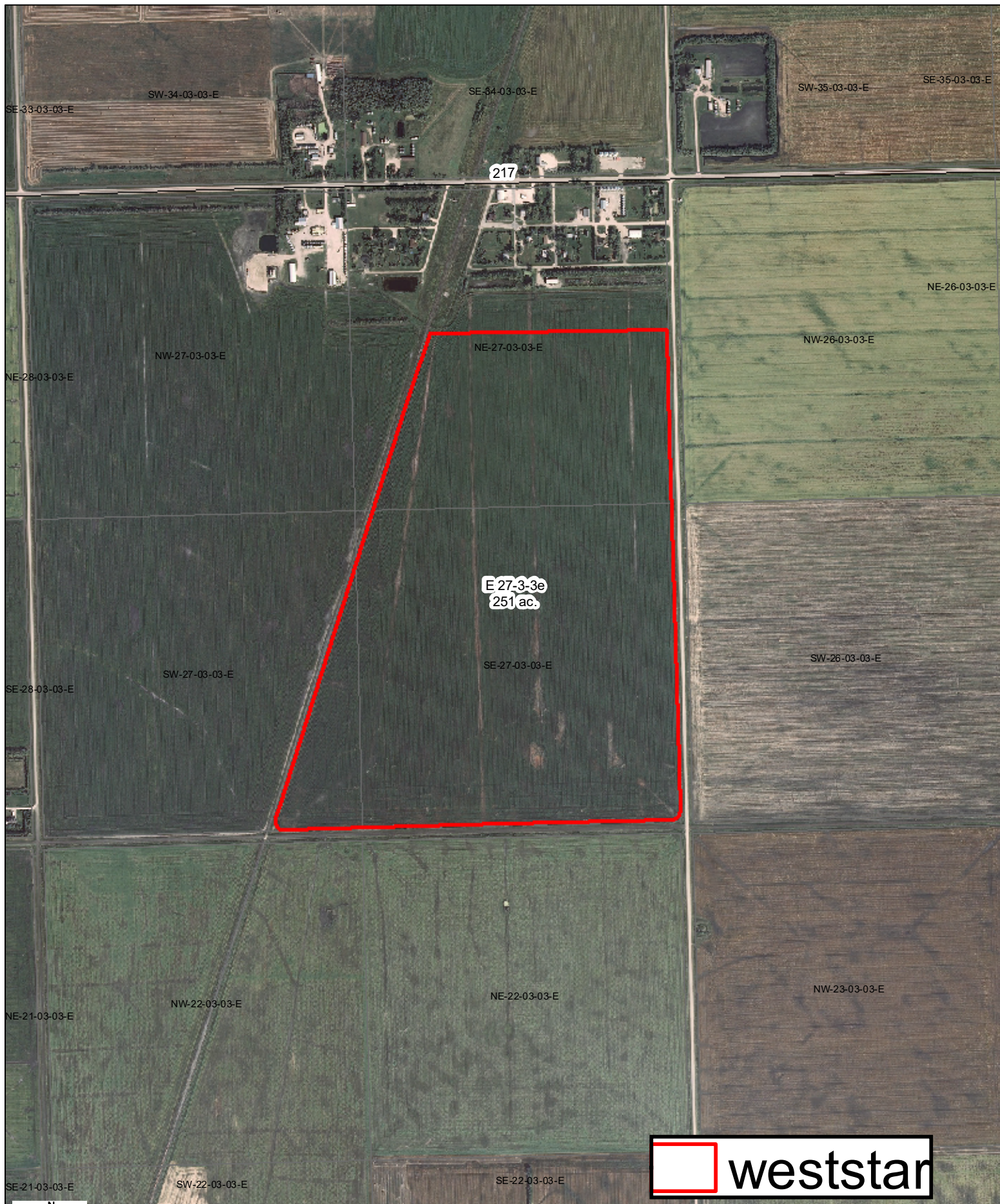
Field	A Legal Description	B Rural Municipality	C O/C/L/A	D Total Acreage	E Setbacks, including features	F Net Acreage for Manure Application	G Agriculture Capability Class and Subclass	H Soil Phosphorus (ppm Olsen P) 0-6 inches	I Development Plan Designation	J Zoning
1	NW 4-3-3e	Emerson-Franklin	A	84	Accounted for	84	3w	28	5-2017, Agricultural Policy Area	6-17, Agricultural 1 Zone
2	NE 4-3-3e	Emerson-Franklin	A	162	Accounted for	162	3w	27	5-2017, Agricultural Policy Area	6-17, Agricultural 1 Zone
3	SW 4-3-3e	Emerson-Franklin	A	139	Accounted for	139	3w	40	5-2017, Agricultural Policy Area	6-17, Agricultural 1 Zone
4	SE 4-3-3e	Emerson-Franklin	A	162	Accounted for	162	3w	40	5-2017, Agricultural Policy Area	6-17, Agricultural 1 Zone
5	NW 3-3-3e	Emerson-Franklin	A	160	Accounted for	160	3w	36	5-2017, Agricultural Policy Area	6-17, Agricultural 1 Zone
6	NE 3-3-3e	Emerson-Franklin	A	159	Accounted for	159	3w	53	5-2017, Agricultural Policy Area	6-17, Agricultural 1 Zone
7	SW 3-3-3e	Emerson-Franklin	A	159	Accounted for	159	3w	50	5-2017, Agricultural Policy Area	6-17, Agricultural 1 Zone
8	SE 3-3-3e	Emerson-Franklin	A	159	Accounted for	159	3w	45	5-2017, Agricultural Policy Area	6-17, Agricultural 1 Zone
9	NW 34-2-3e	Emerson-Franklin	A	161	Accounted for	161	3w	25	5-2017, Agricultural Policy Area	6-17, Agricultural 1 Zone
10	NE 34-2-3e	Emerson-Franklin	A	146	Accounted for	146	3w	31	5-2017, Agricultural Policy Area	6-17, Agricultural 1 Zone
11	NW 35-2-3e	Emerson-Franklin	A	116	Accounted for	116	3w	50	5-2017, Agricultural Policy Area	6-17, Agricultural 1 Zone
12	SW 35-2-3e	Emerson-Franklin	A	92	Accounted for	92	2w3w2dw, 3w	41	5-2017, Agricultural Policy Area	6-17, Agricultural 1 Zone
13	NE 28-2-3e	Emerson-Franklin	A	160	Accounted for	160	2w3w2dw, 3w	9	5-2017, Agricultural Policy Area	6-17, Agricultural 1 Zone
14	NW 28-2-3e	Emerson-Franklin	A	160	Accounted for	160	2w3w2dw, 2w	18	5-2017, Agricultural Policy Area	6-17, Agricultural 1 Zone
15	E 27-3-3e	Emerson-Franklin	A	251	Accounted for	251	3w	8	5-2017, Limited Agricultural Policy Area	6-17, Agricultural 2 Zone
16										
17										
18										
19										
20										
Total Net Acreage for Manure Application:						2270				

- A. _____ Enter the legal description for each parcel of land that will receive manure: Sec, Twp, Rge or River Lot (including parish).
- B. _____ Identify the Rural Municipality in which the parcel is located.
- C. _____ Indicate how the land has been secured for manure application: O – Own / C-Crown / L – Lease / A – Agreement. Multiple designations may be used as appropriate (ex. C/A for Crown lands that are under a spread agreement with the producer that holds the agricultural Crown land lease).
- D. _____ Enter the total acreage for the parcel.
- E. _____ Enter setbacks from surface water or groundwater features that reduce the land available for manure application; include identification of type of feature (ex. 8m, Order 3 drain).
- F. _____ Enter the net acreage available for manure application for the parcel after taking into account setbacks and excluding Class 6, 7 and unimproved organic soils.
- G. _____ Enter the agriculture capability class and subclass ratings for the acreage available for manure application.
- H. _____ Provide soil test results for phosphorus in ppm Olsen P for soil samples taken at the 0-6 inch depth. Soil test results must be no more than 12 months old and must be completed by an accredited soil-testing laboratory.
- I. _____ Indicate the Development Plan and its by-law number in addition to the map designation for each field (ex. By-law #1/2008: AG).
- J. _____ Indicate the Zoning By-law and its by-law number in addition to the zoning for each field (ex. By-law 12/2009: AG 80).

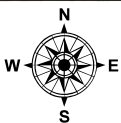
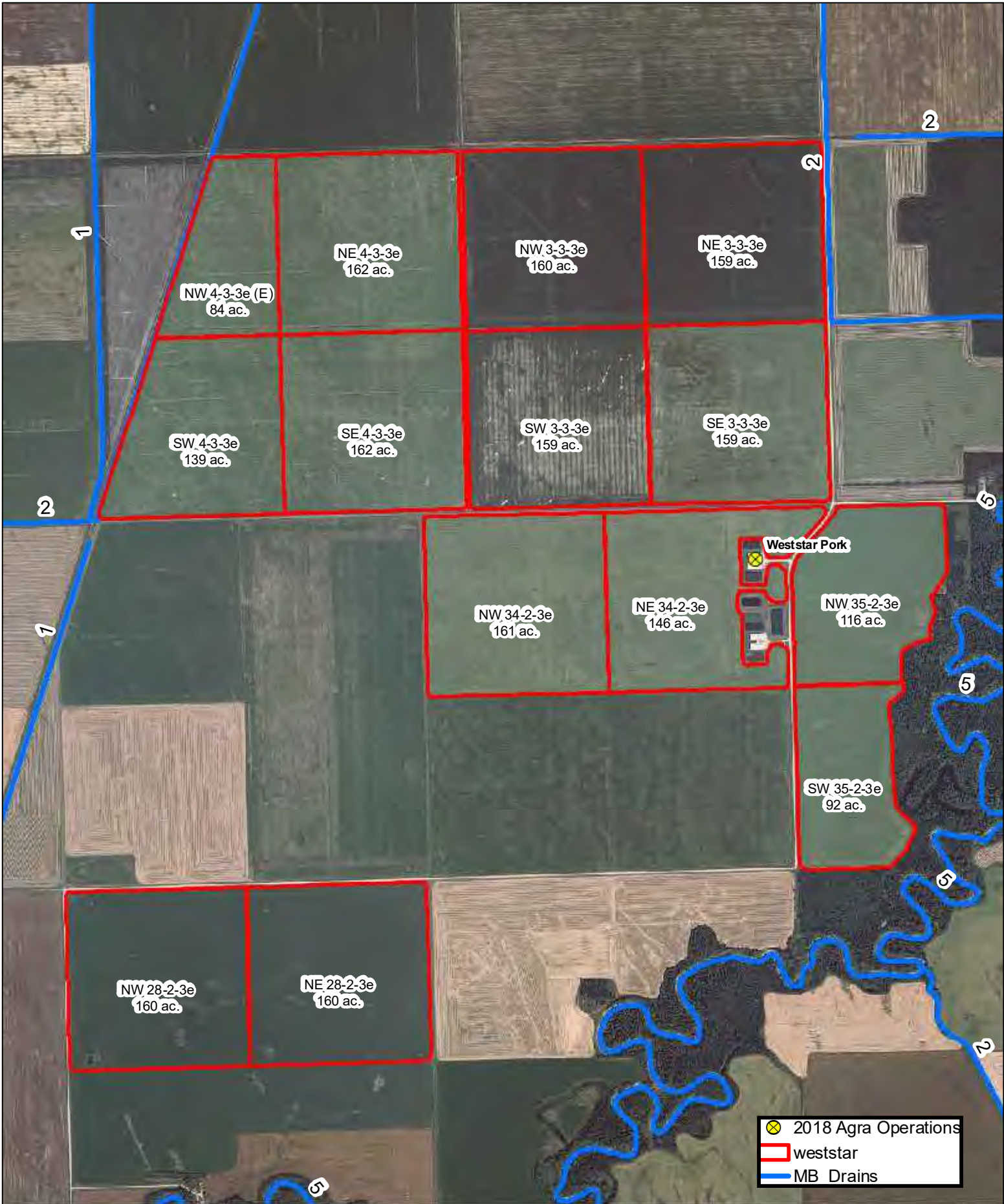
Weststar Pork Inc. Spread Fields March 20, 2020



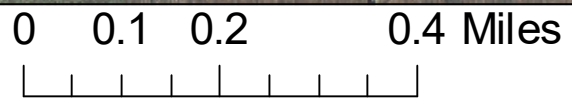
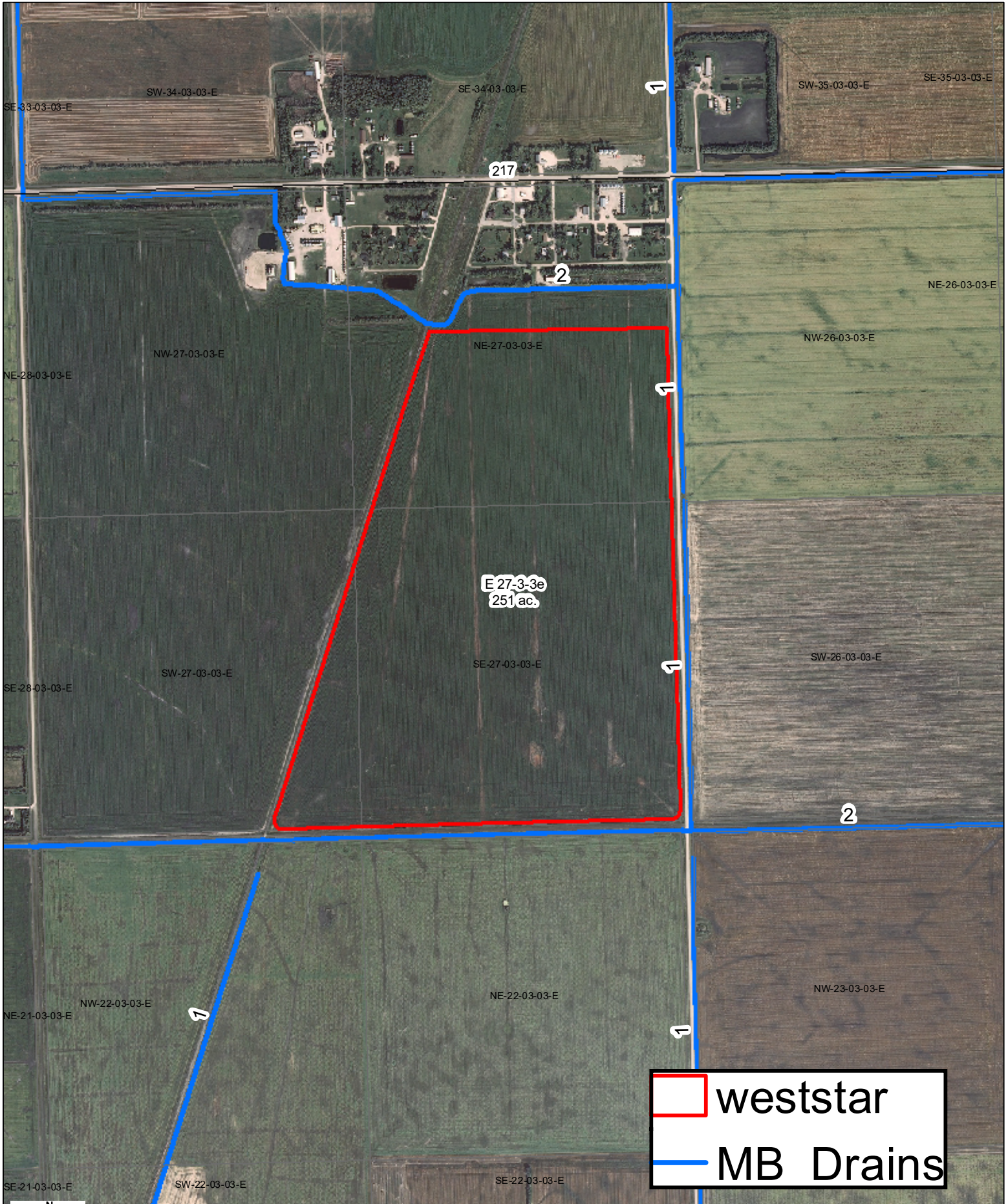
Weststar Pork Inc. Spread Fields March 20, 2020



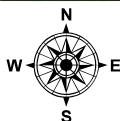
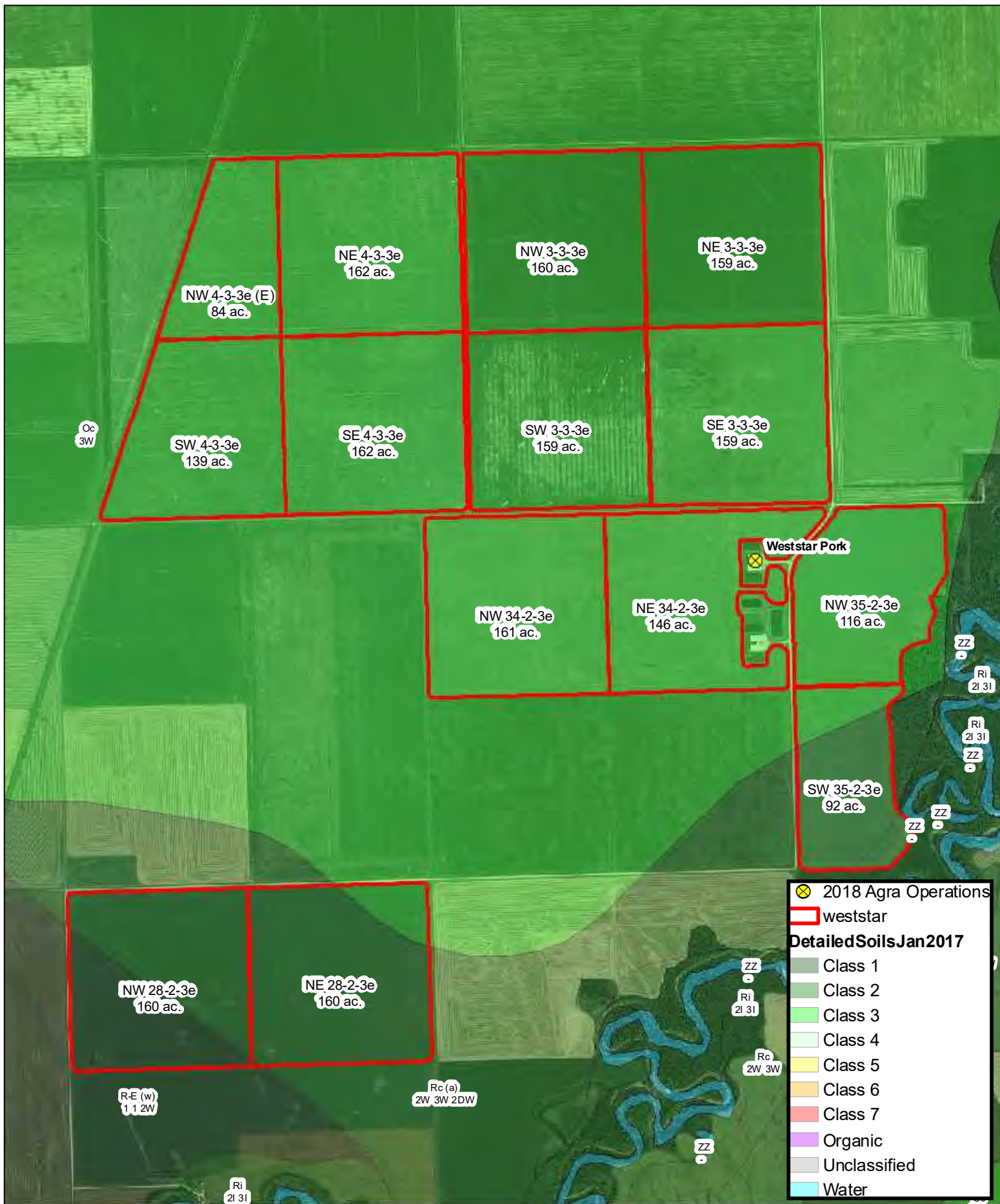
Weststar Pork Inc. Drains Map, March 20, 2020



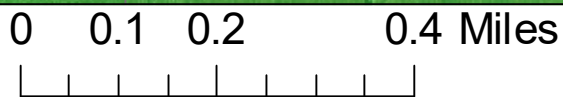
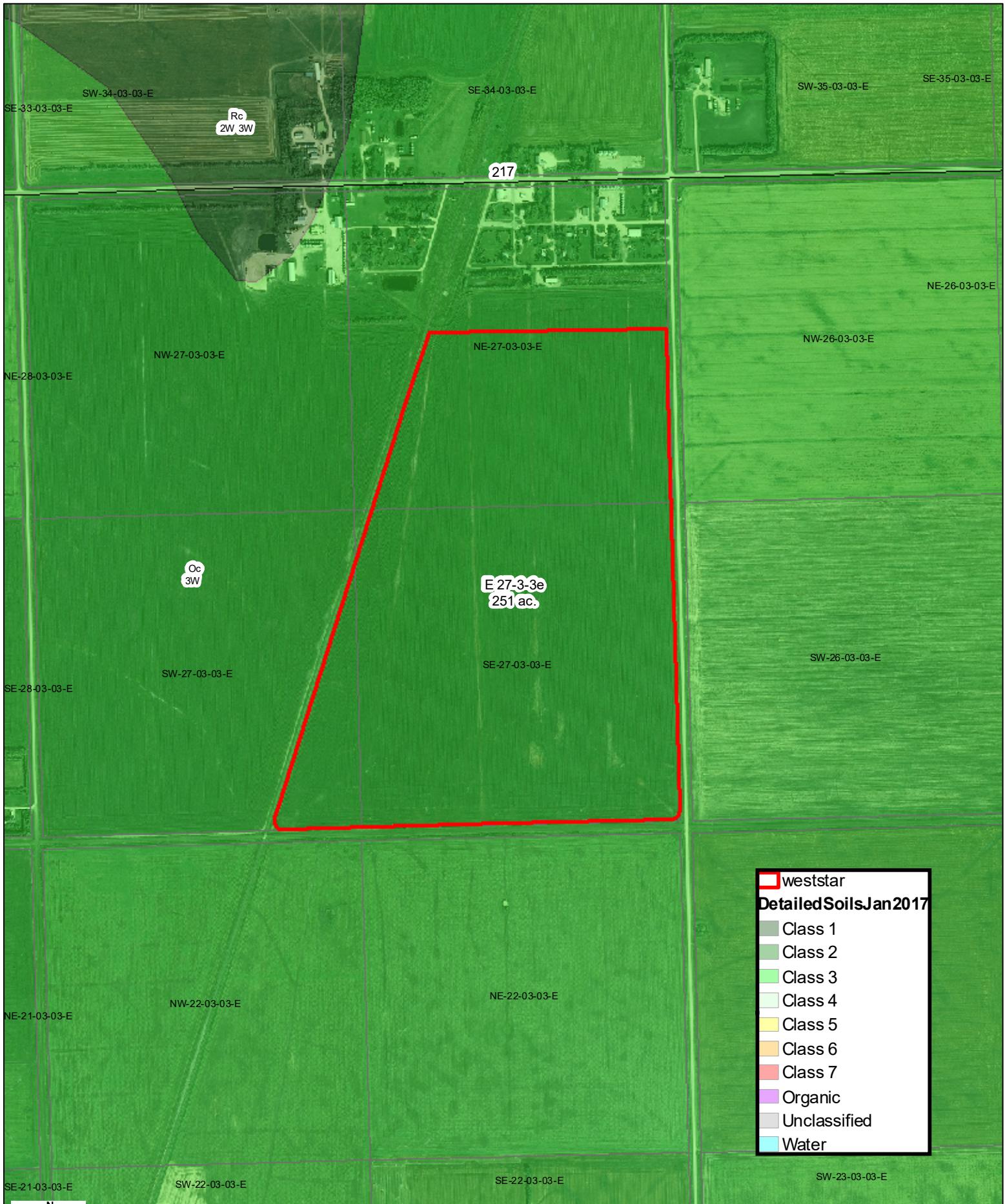
Weststar Pork Inc. Drains Map March 20, 2020



Weststar Pork Inc. Soils Map, March 20, 2020



Weststar Pork Inc. Soils Map March 20, 2020

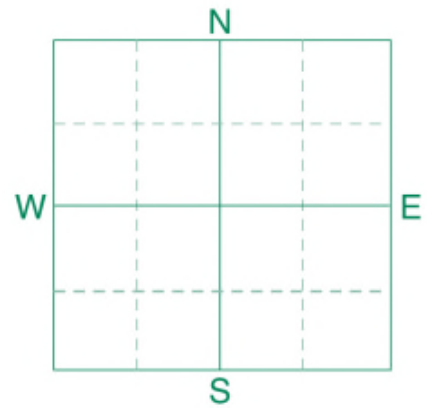




Soil Analysis by Agvise Laboratories
 (http://www.agvise.com)
 Northwood: (701) 587-6010
 Benson: (320) 843-4109

SOIL TEST REPORT

FIELD ID 1
 SAMPLE ID
 FIELD NAME **Dennis Janzen**
 COUNTY
 TWP **NW 4-3-3ee** RANGE
 SECTION QTR ACRES **82**
 PREV. CROP **Soybeans**



SUBMITTED FOR:
Weststar Pork HBH Pork

SUBMITTED BY: **EL1911**
AGRA-GOLD CONSULTING LTD
CLIFF LOEWEN
33020 ROAD 40 N
BLUMENORT, MB **ROA 0C1**

REF # **2024914** BOX # **0**
 LAB # **NW87694**

Date Sampled **09/28/2017**

Date Received **09/28/2017**

Date Reported **9/29/2017**

Nutrient In The Soil		Interpretation				1st Crop Choice		2nd Crop Choice		3rd Crop Choice				
		VLow	Low	Med	High	Corn-Grain								
Nitrate	0-6" 6-24"	*****				YIELD GOAL		YIELD GOAL		YIELD GOAL				
					160 BU									
	0-24"					SUGGESTED GUIDELINES		SUGGESTED GUIDELINES		SUGGESTED GUIDELINES				
						Band								
						LB/ACRE	APPLICATION	LB/ACRE	APPLICATION	LB/ACRE	APPLICATION			
Olsen Phosphorus 28 ppm		*****				N	134	N		N				
Potassium 570 ppm		*****				P ₂ O ₅	15 Band (2x2) *	P ₂ O ₅		P ₂ O ₅				
Chloride						K ₂ O	10 Band (2x2) *	K ₂ O		K ₂ O				
Sulfur 0-6" 20 lb/ac 6-24" 60 lb/ac		*****				Cl		Cl		Cl				
Boron						S	5 Band (Trial)	S		S				
Zinc 2.54 ppm		*****				B		B		B				
Iron						Zn	0	Zn		Zn				
Manganese						Fe		Fe		Fe				
Copper						Mn		Mn		Mn				
Magnesium 1688 ppm		*****				Cu		Cu		Cu				
Calcium 6039 ppm		*****				Mg	0	Mg		Mg				
Sodium 68 ppm		*****				Lime		Lime		Lime				
Org.Matter 4.6 %		*****				Soil pH		Cation Exchange Capacity		% Base Saturation (Typical Range)				
Carbonate(CCE)						Buffer pH		Capacity		% Ca	% Mg	% K	% Na	% I
Sol. Salts 0-6" 0.64 mmho/cm 6-24" 0.65 mmho/cm		*****				0-6" 7.5		46.0 meq	(65-75)	(15-20)	(1-7)	(0-5)	(0-5)	
						6-24" 8.1			65.6	30.6	3.2	0.6		

General Comments: Clays/Clay Loams (CEC range = 30+) (Fine)

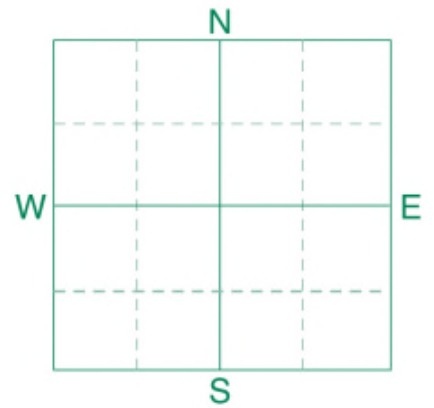
Crop 1: * Caution: Seed Placed Fertilizer Can Cause Injury * Nitrogen is credited 30 lbs for the previous crop. Nitrogen credits may need to be adjusted based on local conditions. Many crops may respond to a starter application of P & K even on high soil tests. Crop Removal: P2O5 = 64 K2O = 43 AGVISE Band guidelines will build P & K test levels to the medium range over many years.



Soil Analysis by Agvise Laboratories
 (http://www.agvise.com)
 Northwood: (701) 587-6010
 Benson: (320) 843-4109

SOIL TEST REPORT

FIELD ID 2
 SAMPLE ID
 FIELD NAME **Dennis Janzen**
 COUNTY
 TWP **NE 4-3-3e** RANGE
 SECTION QTR ACRES **157**
 PREV. CROP **Soybeans**



SUBMITTED FOR:
Weststar Pork HBH Pork

SUBMITTED BY: **EL1911**
AGRA-GOLD CONSULTING LTD
CLIFF LOEWEN
33020 ROAD 40 N
BLUMENORT, MB **ROA 0C1**

REF # **2024913** BOX # **0**
 LAB # **NW87695**

Date Sampled **09/28/2017**

Date Received **09/28/2017**

Date Reported **9/29/2017**

Nutrient In The Soil		Interpretation				1st Crop Choice		2nd Crop Choice		3rd Crop Choice			
		VLow	Low	Med	High								
Nitrate	0-6" 6-24"	*****				Corn-Grain							
						YIELD GOAL		YIELD GOAL		YIELD GOAL			
	0-24"					160 BU							
						SUGGESTED GUIDELINES		SUGGESTED GUIDELINES		SUGGESTED GUIDELINES			
						Band							
						LB/ACRE	APPLICATION	LB/ACRE	APPLICATION	LB/ACRE	APPLICATION		
						N	135	N		N			
Olsen Phosphorus	27 ppm	*****	*****	*****	*****	P ₂ O ₅	15 Band (2x2) *	P ₂ O ₅		P ₂ O ₅			
Potassium	567 ppm	*****	*****	*****	*****	K ₂ O	10 Band (2x2) *	K ₂ O		K ₂ O			
Chloride						Cl		Cl		Cl			
						S	5 Band (Trial)	S		S			
Sulfur	0-6" 6-24"					B		B		B			
Boron						Zn	0	Zn		Zn			
Zinc	2.26 ppm	*****	*****	*****	*****	Fe		Fe		Fe			
Iron						Mn		Mn		Mn			
Manganese						Cu		Cu		Cu			
Copper						Mg	0	Mg		Mg			
Magnesium	1609 ppm	*****	*****	*****	*****	Lime		Lime		Lime			
Calcium	5786 ppm	*****	*****	*****	*****								
Sodium	61 ppm	*****	***										
Org.Matter	5.0 %	*****	*****	*****	*****								
Carbonate(CCE)													
Sol. Salts	0-6" 6-24"					Soil pH	Buffer pH	Cation Exchange Capacity	% Base Saturation (Typical Range)				
						0-6" 7.3		44.1 meq	% Ca	% Mg	% K	% Na	% I
						6-24" 8.1			(65-75) 65.7	(15-20) 30.4	(1-7) 3.3	(0-5) 0.6	(0-5)

General Comments: Clays/Clay Loams (CEC range = 30+) (Fine)

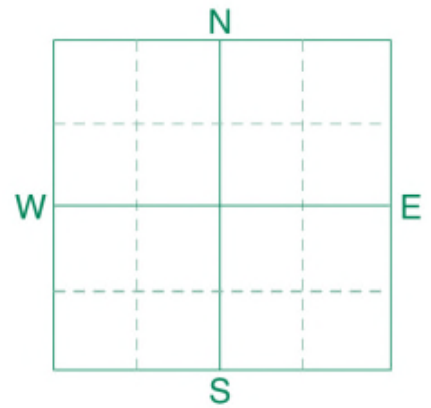
Crop 1: * Caution: Seed Placed Fertilizer Can Cause Injury * Nitrogen is credited 30 lbs for the previous crop. Nitrogen credits may need to be adjusted based on local conditions. Many crops may respond to a starter application of P & K even on high soil tests. Crop Removal: P2O5 = 64 K2O = 43 AGVISE Band guidelines will build P & K test levels to the medium range over many years.



Soil Analysis by Agvise Laboratories
 (http://www.agvise.com)
 Northwood: (701) 587-6010
 Benson: (320) 843-4109

SOIL TEST REPORT

FIELD ID 3 and 4
 SAMPLE ID
 FIELD NAME **Dennis Janzen**
 COUNTY
 TWP **SESW 4-3-3e** RANGE
 SECTION QTR ACRES **280**
 PREV. CROP **Soybeans**



SUBMITTED FOR:
Weststar Pork HBH Pork

SUBMITTED BY: **EL1911**
AGRA-GOLD CONSULTING LTD
CLIFF LOEWEN
33020 ROAD 40 N
BLUMENORT, MB **ROA 0C1**

REF # **2028063** BOX # **0**
 LAB # **NW90522**

Date Sampled **09/28/2017**

Date Received **09/30/2017**

Date Reported **10/2/2017**

Nutrient In The Soil		Interpretation				1st Crop Choice			2nd Crop Choice			3rd Crop Choice				
		VLow	Low	Med	High	Corn-Grain										
Nitrate	0-6" 6-24"	23 lb/ac 12 lb/ac	*****			YIELD GOAL	160 BU	YIELD GOAL		YIELD GOAL						
	0-24"	35 lb/ac				SUGGESTED GUIDELINES		SUGGESTED GUIDELINES		SUGGESTED GUIDELINES						
						Band										
						LB/ACRE	APPLICATION	LB/ACRE	APPLICATION	LB/ACRE	APPLICATION					
Olsen Phosphorus	40 ppm	*****	*****	*****	*****	N	127			N		N				
Potassium	494 ppm	*****	*****	*****	*****	P ₂ O ₅	15	Band (2x2) *		P ₂ O ₅		P ₂ O ₅				
Chloride						K ₂ O	10	Band (2x2) *		K ₂ O		K ₂ O				
Sulfur	0-6" 6-24"	16 lb/ac 54 lb/ac	*****	*****	*****	Cl				Cl		Cl				
Boron						S	5	Band (Trial)		S		S				
Zinc	0.00 ppm					B				B		B				
Iron						Zn	5	Band		Zn		Zn				
Manganese						Fe				Fe		Fe				
Copper						Mn				Mn		Mn				
Magnesium	1492 ppm	*****	*****	*****	*****	Cu				Cu		Cu				
Calcium	5499 ppm	*****	*****	*****	*****	Mg	0			Mg		Mg				
Sodium	54 ppm	*****	*****	*****	*****	Lime				Lime		Lime				
Org.Matter	No Data															
Carbonate(CCE)																
Sol. Salts	0-6" 6-24"	0.61 mmho/cm 0.66 mmho/cm	*****	*****	*****	Soil pH	7.3 8.2	Buffer pH		Cation Exchange Capacity	41.4 meq	% Base Saturation (Typical Range)				
												% Ca	% Mg	% K	% Na	% I
												(65-75)	(15-20)	(1-7)	(0-5)	(0-5)
												66.4	30.0	3.1	0.6	

General Comments: Clays/Clay Loams (CEC range = 30+) (Fine)

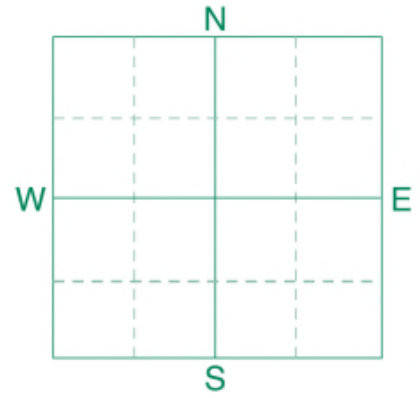
Crop 1: * Caution: Seed Placed Fertilizer Can Cause Injury * Nitrogen is credited 30 lbs for the previous crop. Nitrogen credits may need to be adjusted based on local conditions. Many crops may respond to a starter application of P & K even on high soil tests. Crop Removal: P2O5 = 64 K2O = 43 AGVISE Band guidelines will build P & K test levels to the medium range over many years.



Soil Analysis by Agvise Laboratories
 (http://www.agvise.com)
 Northwood: (701) 587-6010
 Benson: (320) 843-4109

SOIL TEST REPORT

FIELD ID 5
 SAMPLE ID
 FIELD NAME **Dennis Janzen**
 COUNTY
 TWP **NW 3-3-3e** RANGE
 SECTION QTR ACRES **152**
 PREV. CROP **Wheat-Spring**



SUBMITTED FOR:
Weststar Pork HBH Pork

SUBMITTED BY: **EL1911**
AGRA-GOLD CONSULTING LTD
CLIFF LOEWEN
33020 RD 40 N
BLUMENORT, MB R0A 0C1

REF # **2662494** BOX # **5037**
 LAB # **NW45564**

Date Sampled **08/19/2019**

Date Received **08/20/2019**

Date Reported **8/21/2019**

Nutrient In The Soil		Interpretation				1st Crop Choice		2nd Crop Choice		3rd Crop Choice			
		VLow	Low	Med	High	Corn-Grain							
Nitrate	0-6" 6-24"	20 lb/ac 15 lb/ac	*****				YIELD GOAL				YIELD GOAL		
	0-24"	35 lb/ac					160 BU				YIELD GOAL		
							SUGGESTED GUIDELINES				SUGGESTED GUIDELINES		
							Band				SUGGESTED GUIDELINES		
							LB/ACRE APPLICATION				LB/ACRE APPLICATION		
Phosphorus	Olsen	36 ppm	*****	*****	*****	N	157				N		
Potassium		668 ppm	*****	*****	*****	P ₂ O ₅	15	Band (2x2) *			P ₂ O ₅		
Chloride						K ₂ O	10	Band (2x2) *			K ₂ O		
Sulfur	0-6" 6-24"	26 lb/ac 66 lb/ac	*****	*****	*****	Cl					Cl		
Boron						S	0				S		
Zinc		3.13 ppm	*****	*****	*****	B					B		
Iron						Zn	0				Zn		
Manganese						Fe					Fe		
Copper						Mn					Mn		
Magnesium		1592 ppm	*****	*****	*****	Cu					Cu		
Calcium		6314 ppm	*****	*****	*****	Mg	0				Mg		
Sodium		72 ppm	*****	*****	*****	Lime					Lime		
Org.Matter		5.2 %	*****	*****	*****								
Carbonate(CCE)						Soil pH	Buffer pH	Cation Exchange Capacity	% Base Saturation (Typical Range)				
									% Ca	% Mg	% K	% Na	% H
	0-6" 6-24"	0.67 mmho/cm 0.68 mmho/cm	*****	*****	*****	0-6" 7.3 6-24" 8.1		46.9 meq	(65-75) 67.3	(15-20) 28.3	(1-7) 3.7	(0-5) 0.7	(0-5) 0.0
Sol. Salts													

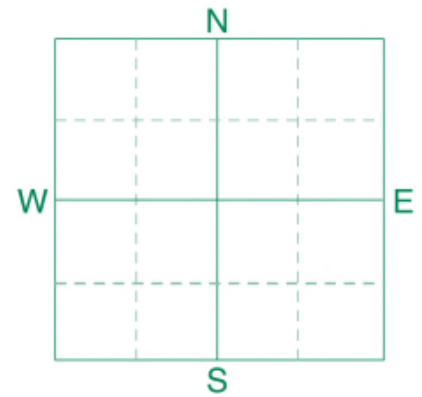
General Comments: Clays/Clay Loams (CEC range = 30+) (Fine)
 Percent hydrogen is estimated from water pH, CEC corrected for exchangeable acidity.
 Crop 1: * Caution: Seed Placed Fertilizer Can Cause Injury * Many crops may respond to a starter application of P & K even on high soil tests. Crop Removal: P2O5 = 59
 K2O = 37 AGVISE Band guidelines will build P & K test levels to the medium range over many years.



Soil Analysis by Agvise Laboratories
 (http://www.agvise.com)
 Northwood: (701) 587-6010
 Benson: (320) 843-4109

SOIL TEST REPORT

FIELD ID 6
 SAMPLE ID
 FIELD NAME **Dennis Janzen**
 COUNTY
 TWP **NE 3-3-3e** RANGE
 SECTION QTR ACRES **158**
 PREV. CROP **Wheat-Spring**



SUBMITTED FOR:
Weststar Pork HBH Pork

SUBMITTED BY: **EL1911**
AGRA-GOLD CONSULTING LTD
CLIFF LOEWEN
33020 RD 40 N
BLUMENORT, MB **ROA 0C1**

REF # **2662492** BOX # **5089**
 LAB # **NW45562**

Date Sampled **08/19/2019**

Date Received **08/20/2019**

Date Reported **8/21/2019**

Nutrient In The Soil		Interpretation				1st Crop Choice		2nd Crop Choice		3rd Crop Choice			
		VLow	Low	Med	High	Corn-Grain							
Nitrate	0-6" 6-24"	36 lb/ac 21 lb/ac	*****				YIELD GOAL	YIELD GOAL		YIELD GOAL			
	0-24"	57 lb/ac				160 BU	SUGGESTED GUIDELINES		SUGGESTED GUIDELINES				
						Band	SUGGESTED GUIDELINES		SUGGESTED GUIDELINES				
						LB/ACRE	APPLICATION	LB/ACRE	APPLICATION	LB/ACRE	APPLICATION		
						N	135			N			
Phosphorus	Olsen	53 ppm	*****										
Potassium		672 ppm	*****			P ₂ O ₅	15	Band (2x2) *	P ₂ O ₅				
Chloride						K ₂ O	10	Band (2x2) *	K ₂ O				
Sulfur	0-6" 6-24"	50 lb/ac 48 lb/ac	*****			Cl			Cl				
Boron						S	0		S				
Zinc		3.67 ppm	*****			B			B				
Iron						Zn	0		Zn				
Manganese						Fe			Fe				
Copper						Mn			Mn				
Magnesium		1527 ppm	*****			Cu			Cu				
Calcium		6748 ppm	*****			Mg	0		Mg				
Sodium		79 ppm	*****			Lime			Lime				
Org.Matter		5.9 %	*****			Soil pH	Buffer pH	Cation Exchange Capacity	% Base Saturation (Typical Range)				
Carbonate(CCE)									% Ca	% Mg	% K	% Na	% H
Sol. Salts	0-6" 6-24"	0.97 mmho/cm 0.76 mmho/cm	*****			0-6" 7.3 6-24" 8.0		48.5 meq	(65-75) 69.5	(15-20) 26.2	(1-7) 3.5	(0-5) 0.7	(0-5) 0.0

General Comments: Clays/Clay Loams (CEC range = 30+) (Fine)
 Percent hydrogen is estimated from water pH, CEC corrected for exchangeable acidity.

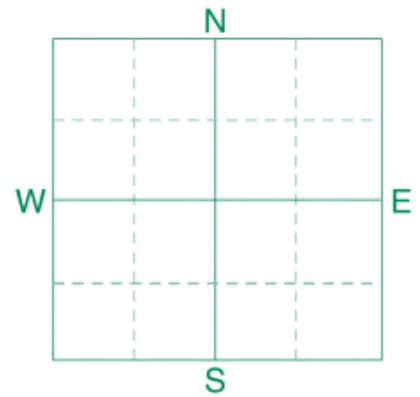
Crop 1: * Caution: Seed Placed Fertilizer Can Cause Injury * Many crops may respond to a starter application of P & K even on high soil tests. Crop Removal: P2O5 = 59
 K2O = 37 AGVISE Band guidelines will build P & K test levels to the medium range over many years.



Soil Analysis by Agvise Laboratories
 (http://www.agvise.com)
 Northwood: (701) 587-6010
 Benson: (320) 843-4109

SOIL TEST REPORT

FIELD ID 7
 SAMPLE ID
 FIELD NAME **Dennis Janzen**
 COUNTY
 TWP **SW 3-3-3e** RANGE
 SECTION QTR ACRES **153**
 PREV. CROP **Wheat-Spring**



SUBMITTED FOR:
Weststar Pork HBH Pork

SUBMITTED BY: **EL1911**
AGRA-GOLD CONSULTING LTD
CLIFF LOEWEN
33020 RD 40 N
BLUMENORT, MB **ROA 0C1**

REF # **2662490** BOX # **5038**
 LAB # **NW45560**

Date Sampled **08/19/2019**

Date Received **08/20/2019**

Date Reported **8/21/2019**

Nutrient In The Soil		Interpretation				1st Crop Choice		2nd Crop Choice		3rd Crop Choice				
		VLow	Low	Med	High	Corn-Grain								
Nitrate	0-6" 6-24"	28 lb/ac 21 lb/ac				YIELD GOAL		YIELD GOAL		YIELD GOAL				
	0-24"	49 lb/ac	*****			160 BU								
						SUGGESTED GUIDELINES		SUGGESTED GUIDELINES		SUGGESTED GUIDELINES				
						Band								
						LB/ACRE	APPLICATION	LB/ACRE	APPLICATION	LB/ACRE	APPLICATION			
Phosphorus	Olsen	50 ppm	*****	*****	*****	N	143	N		N				
Potassium		528 ppm	*****	*****	*****	P ₂ O ₅	15	P ₂ O ₅		P ₂ O ₅				
Chloride						K ₂ O	10	K ₂ O		K ₂ O				
Sulfur	0-6" 6-24"	120 +lb/ac 72 lb/ac	*****	*****	*****	Cl		Cl		Cl				
Boron						S	0	S		S				
Zinc		2.95 ppm	*****	*****	*****	B		B		B				
Iron						Zn	0	Zn		Zn				
Manganese						Fe		Fe		Fe				
Copper						Mn		Mn		Mn				
Magnesium		1820 ppm	*****	*****	*****	Cu		Cu		Cu				
Calcium		7206 ppm	*****	*****	*****	Mg	0	Mg		Mg				
Sodium		125 ppm	*****	*****	*****	Lime		Lime		Lime				
Org.Matter		4.9 %	*****	*****	*****	Soil pH	Buffer pH	Cation Exchange Capacity		% Base Saturation (Typical Range)				
Carbonate(CCE)									% Ca	% Mg	% K	% Na	% H	
Sol. Salts	0-6" 6-24"	1.8 mmho/cm 0.68 mmho/cm	*****	*****	*****	0-6" 7.5 6-24" 8.2		53.1 meq	(65-75) 67.9	(15-20) 28.6	(1-7) 2.5	(0-5) 1.0	(0-5) 0.0	

General Comments: Clays/Clay Loams (CEC range = 30+) (Fine)

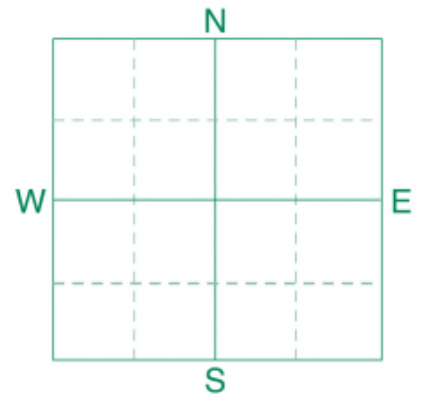
Crop 1: * Caution: Seed Placed Fertilizer Can Cause Injury * Many crops may respond to a starter application of P & K even on high soil tests. Crop Removal: P2O5 = 59 K2O = 37 AGVISE Band guidelines will build P & K test levels to the medium range over many years.



Soil Analysis by Agvise Laboratories
 (http://www.agvise.com)
 Northwood: (701) 587-6010
 Benson: (320) 843-4109

SOIL TEST REPORT

FIELD ID 8
 SAMPLE ID
 FIELD NAME **Dennis Janzen**
 COUNTY
 TWP **SE 3-3-3e** RANGE
 SECTION QTR ACRES **158**
 PREV. CROP **Wheat-Spring**



SUBMITTED FOR:
Weststar Pork HBH Pork

SUBMITTED BY: **EL1911**
AGRA-GOLD CONSULTING LTD
CLIFF LOEWEN
33020 RD 40 N
BLUMENORT, MB R0A 0C1

REF # **2662491** BOX # **5087**
 LAB # **NW45561**

Date Sampled **08/19/2019**

Date Received **08/20/2019**

Date Reported **8/21/2019**

Nutrient In The Soil		Interpretation				1st Crop Choice		2nd Crop Choice		3rd Crop Choice		
		VLow	Low	Med	High	Corn-Grain						
Nitrate	0-6" 6-24"	32 lb/ac 18 lb/ac				YIELD GOAL		YIELD GOAL		YIELD GOAL		
	0-24"	50 lb/ac	*****			160 BU						
						SUGGESTED GUIDELINES		SUGGESTED GUIDELINES		SUGGESTED GUIDELINES		
						Band						
						LB/ACRE	APPLICATION	LB/ACRE	APPLICATION	LB/ACRE	APPLICATION	
Phosphorus	Olsen	45 ppm	*****	*****	N	142	N		N			
Potassium		345 ppm	*****	*****	P ₂ O ₅	15	Band (2x2) *	P ₂ O ₅		P ₂ O ₅		
Chloride					K ₂ O	10	Band (2x2) *	K ₂ O		K ₂ O		
Sulfur	0-6" 6-24"	82 lb/ac 54 lb/ac	*****	*****	Cl			Cl		Cl		
Boron					S	0		S		S		
Zinc		4.56 ppm	*****	*****	B			B		B		
Iron					Zn	0		Zn		Zn		
Manganese					Fe			Fe		Fe		
Copper					Mn			Mn		Mn		
Magnesium		1762 ppm	*****	*****	Cu			Cu		Cu		
Calcium		6195 ppm	*****	*****	Mg	0		Mg		Mg		
Sodium		86 ppm	*****	*****	Lime			Lime		Lime		
Org.Matter		5.4 %	*****	*****	Soil pH	Buffer pH	Cation Exchange Capacity	% Base Saturation (Typical Range)				
Carbonate(CCE)								% Ca	% Mg	% K	% Na	% H
Sol. Salts	0-6" 6-24"	0.92 mmho/cm 0.64 mmho/cm	*****	*****	0-6" 7.3		46.9 meq	(65-75) 66.0	(15-20) 31.3	(1-7) 1.9	(0-5) 0.8	(0-5) 0.0

General Comments: Clays/Clay Loams (CEC range = 30+) (Fine)
 Percent hydrogen is estimated from water pH, CEC corrected for exchangeable acidity.

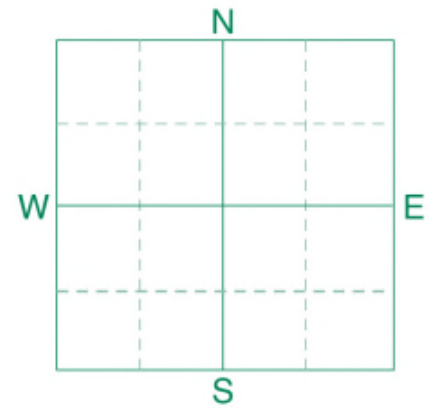
Crop 1: * Caution: Seed Placed Fertilizer Can Cause Injury * Many crops may respond to a starter application of P & K even on high soil tests. Crop Removal: P2O5 = 59
 K2O = 37 AGVISE Band guidelines will build P & K test levels to the medium range over many years.



Soil Analysis by Agvise Laboratories
 (http://www.agvise.com)
 Northwood: (701) 587-6010
 Benson: (320) 843-4109

SOIL TEST REPORT

FIELD ID 9
 SAMPLE ID
 FIELD NAME **Dennis Janzen**
 COUNTY
 TWP **NW 34-2-3e** RANGE
 SECTION QTR ACRES **157**
 PREV. CROP **Soybeans**



SUBMITTED FOR:
Weststar Pork HBH Pork

SUBMITTED BY: **EL1911**
AGRA-GOLD CONSULTING LTD
CLIFF LOEWEN
33020 ROAD 40 N
BLUMENORT, MB **ROA 0C1**

REF # **2028199** BOX # **0**
 LAB # **NW90519**

Date Sampled **09/29/2017**

Date Received **09/30/2017**

Date Reported **10/2/2017**

Nutrient In The Soil		Interpretation				1st Crop Choice		2nd Crop Choice		3rd Crop Choice					
		VLow	Low	Med	High	LB/ACRE	APPLICATION	LB/ACRE	APPLICATION	LB/ACRE	APPLICATION				
Nitrate	0-6" 6-24"	****				Corn-Grain									
	13 lb/ac 9 lb/ac		YIELD GOAL		YIELD GOAL		YIELD GOAL								
	0-24"		160 BU		SUGGESTED GUIDELINES		SUGGESTED GUIDELINES		SUGGESTED GUIDELINES						
	22 lb/ac		SUGGESTED GUIDELINES		SUGGESTED GUIDELINES		SUGGESTED GUIDELINES								
Olsen Phosphorus	25 ppm	*****	*****	*****	*****	Band									
Potassium	466 ppm	*****	*****	*****	*****	N	140	N		N					
Chloride	0-6" 6-24"	*****				P ₂ O ₅	15	Band (2x2) *	P ₂ O ₅		P ₂ O ₅				
	22 lb/ac 78 lb/ac		K ₂ O	10	Band (2x2) *	K ₂ O		K ₂ O		K ₂ O					
Sulfur						Cl		Cl		Cl					
Boron						S	0	S		S					
Zinc	0.00 ppm					B		B		B					
Iron						Zn	4	Band	Zn		Zn				
Manganese						Fe		Fe		Fe					
Copper						Mn		Mn		Mn					
Magnesium	1570 ppm	*****	*****	*****	*****	Cu		Cu		Cu					
Calcium	5795 ppm	*****	*****	*****	*****	Mg	0	Mg		Mg					
Sodium	68 ppm	*****	*****			Lime		Lime		Lime					
Org.Matter	No Data					Soil pH		Buffer pH		Cation Exchange Capacity		% Base Saturation (Typical Range)			
Carbonate(CCE)						0-6"	7.7			43.5 meq	% Ca	% Mg	% K	% Na	% I
Sol. Salts	0-6" 6-24"	0.63 mmho/cm 0.73 mmho/cm	*****	*****	*****	6-24"	8.2				(65-75) 66.5	(15-20) 30.0	(1-7) 2.7	(0-5) 0.7	(0-5)

General Comments: Texture is not estimated on high pH soils.

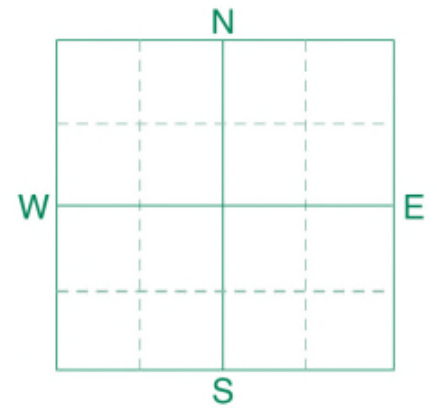
Crop 1: * Caution: Seed Placed Fertilizer Can Cause Injury * Nitrogen is credited 30 lbs for the previous crop. Nitrogen credits may need to be adjusted based on local conditions. Many crops may respond to a starter application of P & K even on high soil tests. Crop Removal: P2O5 = 64 K2O = 43 AGVISE Band guidelines will build P & K test levels to the medium range over many years.



Soil Analysis by Agvise Laboratories
<http://www.agvise.com>
 Northwood: (701) 587-6010
 Benson: (320) 843-4109

SOIL TEST REPORT

FIELD ID 10
 SAMPLE ID
 FIELD NAME **Dennis Janzen**
 COUNTY
 TWP **NE 34-2-3e** RANGE
 SECTION QTR ACRES **133**
 PREV. CROP **Soybeans**



SUBMITTED FOR:
Weststar Pork HBH Pork

SUBMITTED BY: **EL1911**
AGRA-GOLD CONSULTING LTD
CLIFF LOEWEN
33020 ROAD 40 N
BLUMENORT, MB R0A 0C1

REF # **2028198** BOX # **0**
 LAB # **NW90520**

Date Sampled **09/29/2017**

Date Received **09/30/2017**

Date Reported **10/2/20**

Nutrient In The Soil		Interpretation				1st Crop Choice			2nd Crop Choice			3rd Crop Choice		
		VLow	Low	Med	High	Corn-Grain								
Nitrate	0-6" 6-24"	14 lb/ac 9 lb/ac	*****			YIELD GOAL		YIELD GOAL			YIELD GOAL			
	0-24"					23 lb/ac	160 BU	SUGGESTED GUIDELINES			SUGGESTED GUIDELINES			SUGGESTED GUIDELINES
						Band								
						LB/ACRE	APPLICATION	LB/ACRE	APPLICATION	LB/ACRE	APPLICATION	LB/ACRE	APPLICATION	
Olsen Phosphorus	31 ppm	*****	*****	*****	*****	N	139	N		N		N		
Potassium	451 ppm	*****	*****	*****	*****	P ₂ O ₅	15 Band (2x2) *	P ₂ O ₅		P ₂ O ₅		P ₂ O ₅		
Chloride						K ₂ O	10 Band (2x2) *	K ₂ O		K ₂ O		K ₂ O		
Sulfur	0-6" 6-24"	22 lb/ac 84 lb/ac	*****	*****	*****	Cl		Cl		Cl		Cl		
							S	0	S		S		S	
Boron						B		B		B		B		
Zinc	0.00 ppm					Zn	5 Band	Zn		Zn		Zn		
Iron						Fe		Fe		Fe		Fe		
Manganese						Mn		Mn		Mn		Mn		
Copper						Cu		Cu		Cu		Cu		
Magnesium	1587 ppm	*****	*****	*****	*****	Mg	0	Mg		Mg		Mg		
Calcium	5869 ppm	*****	*****	*****	*****	Lime		Lime		Lime		Lime		
Sodium	73 ppm	*****	*****											
Org.Matter	No Data													
Carbonate(CCE)														
Sol. Salts	0-6" 6-24"	0.56 mmho/cm 0.76 mmho/cm	*****	*****	*****	Soil pH	Buffer pH	Cation Exchange Capacity	% Base Saturation (Typical Range)					
	0-6"					7.7	44.0 meq	% Ca	% Mg	% K	% Na	% I		
						6-24"	8.2		66.6	30.0	2.6	0.7		

General Comments: Texture is not estimated on high pH soils.

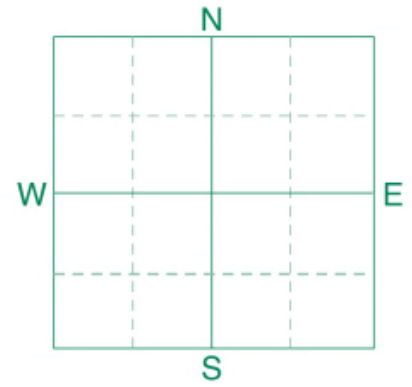
Crop 1: * Caution: Seed Placed Fertilizer Can Cause Injury * Nitrogen is credited 30 lbs for the previous crop. Nitrogen credits may need to be adjusted based on local conditions. Many crops may respond to a starter application of P & K even on high soil tests. Crop Removal: P2O5 = 64 K2O = 43 AGVISE Band guidelines will build P & K test levels to the medium range over many years.



Soil Analysis by Agvise Laboratories
 (http://www.agvise.com)
 Northwood: (701) 587-6010
 Benson: (320) 843-4109

SOIL TEST REPORT

FIELD ID 11
 SAMPLE ID
 FIELD NAME **Dennis Janzen**
 COUNTY
 TWP **NW 35-2-3e** RANGE
 SECTION QTR ACRES **114**
 PREV. CROP **Soybeans**



SUBMITTED FOR:
Weststar Pork HBH Pork

SUBMITTED BY: **EL1911**
AGRA-GOLD CONSULTING LTD
CLIFF LOEWEN
33020 RD 40 N
BLUMENORT, MB **ROA 0C1**

REF # **2365619** BOX # **2976**
 LAB # **NW67945**

Date Sampled **09/11/2018**

Date Received **09/12/2018**

Date Reported **9/13/2018**

Nutrient In The Soil		Interpretation				1st Crop Choice		2nd Crop Choice		3rd Crop Choice				
		VLow	Low	Med	High									
Nitrate	0-6"	16 lb/ac				Corn-Grain								
	6-24"	18 lb/ac	*****			YIELD GOAL		YIELD GOAL		YIELD GOAL				
						160 BU								
	0-24"	34 lb/ac				SUGGESTED GUIDELINES		SUGGESTED GUIDELINES		SUGGESTED GUIDELINES				
						Band								
						LB/ACRE	APPLICATION	LB/ACRE	APPLICATION	LB/ACRE	APPLICATION			
Phosphorus	Olsen	50 ppm	*****			N 128	N		N					
Potassium		533 ppm	*****			P ₂ O ₅ 15	P ₂ O ₅		P ₂ O ₅					
Chloride						K ₂ O 10	K ₂ O		K ₂ O					
Sulfur	0-6"	62 lb/ac	*****			Cl	Cl		Cl					
	6-24"	114 lb/ac	*****			S 0	S		S					
Boron						B	B		B					
Zinc		3.45 ppm	*****			Zn 0	Zn		Zn					
Iron						Fe	Fe		Fe					
Manganese						Mn	Mn		Mn					
Copper						Cu	Cu		Cu					
Magnesium		1745 ppm	*****			Mg 0	Mg		Mg					
Calcium		6259 ppm	*****			Lime	Lime		Lime					
Sodium		86 ppm	*****											
Org.Matter		5.3 %	*****											
Carbonate(CCE)														
Sol. Salts	0-6"	1.05 mmho/cm	*****			Soil pH	Buffer pH	Cation Exchange Capacity		% Base Saturation (Typical Range)				
	6-24"	0.87 mmho/cm	*****			0-6" 7.3		47.6 meq	% Ca	% Mg	% K	% Na	% H	
						6-24" 8.0			(65-75)	(15-20)	(1-7)	(0-5)	(0-5)	
									65.8	30.6	2.9	0.8		

General Comments: Clays/Clay Loams (CEC range = 30+) (Fine)

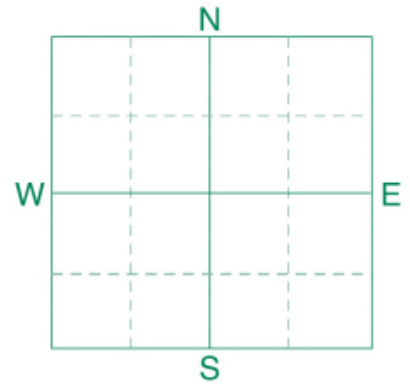
Crop 1: * Caution: Seed Placed Fertilizer Can Cause Injury * Nitrogen is credited 30 lbs for the previous crop. Nitrogen credits may need to be adjusted based on local conditions. Many crops may respond to a starter application of P & K even on high soil tests. Crop Removal: P2O5 = 64 K2O = 43 AGVISE Band guidelines will build P & K test levels to the medium range over many years.



Soil Analysis by Agvise Laboratories
 (http://www.agvise.com)
 Northwood: (701) 587-6010
 Benson: (320) 843-4109

SOIL TEST REPORT

FIELD ID 12
 SAMPLE ID
 FIELD NAME **Dennis Janzen**
 COUNTY
 TWP **SW 35-2-3e** RANGE
 SECTION QTR ACRES **87**
 PREV. CROP **Soybeans**



SUBMITTED FOR:
Weststar Pork HBH Pork

SUBMITTED BY: **EL1911**
AGRA-GOLD CONSULTING LTD
CLIFF LOEWEN
33020 RD 40 N
BLUMENORT, MB ROA 0C1

REF # **2365621** BOX # **2923**
 LAB # **NW68040**

Date Sampled **09/11/2018**

Date Received **09/12/2018**

Date Reported **9/13/2018**

Nutrient In The Soil		Interpretation				1st Crop Choice		2nd Crop Choice		3rd Crop Choice				
		VLow	Low	Med	High									
Nitrate	0-6" 16 lb/ac					Corn-Grain								
	6-24" 12 lb/ac					YIELD GOAL		YIELD GOAL		YIELD GOAL				
		*****				160 BU								
	0-24" 28 lb/ac					SUGGESTED GUIDELINES		SUGGESTED GUIDELINES		SUGGESTED GUIDELINES				
						Band								
							LB/ACRE	APPLICATION	LB/ACRE	APPLICATION	LB/ACRE	APPLICATION		
Olsen Phosphorus	41 ppm	*****				N	134	N		N				
Potassium	465 ppm	*****				P ₂ O ₅	15	Band (2x2) *	P ₂ O ₅		P ₂ O ₅			
Chloride						K ₂ O	10	Band (2x2) *	K ₂ O		K ₂ O			
Sulfur	0-6" 60 lb/ac 6-24" 108 lb/ac	*****				Cl			Cl		Cl			
Boron						S	0		S		S			
Zinc	2.56 ppm	*****				B			B		B			
Iron						Zn	0		Zn		Zn			
Manganese						Fe			Fe		Fe			
Copper						Mn			Mn		Mn			
Magnesium	1705 ppm	*****				Cu			Cu		Cu			
Calcium	6298 ppm	*****				Mg	0		Mg		Mg			
Sodium	89 ppm	*****				Lime			Lime		Lime			
Org.Matter	5.0 %	*****				Soil pH		Cation Exchange Capacity		% Base Saturation (Typical Range)				
Carbonate(CCE)						Buffer pH				% Ca	% Mg	% K	% Na	% H
Sol. Salts	0-6" 0.86 mmho/cm 6-24" 0.81 mmho/cm	*****				0-6" 7.4 6-24" 8.1		47.3 meq		(65-75) 66.6	(15-20) 30.1	(1-7) 2.5	(0-5) 0.8	(0-5)

General Comments: Clays/Clay Loams (CEC range = 30+) (Fine)

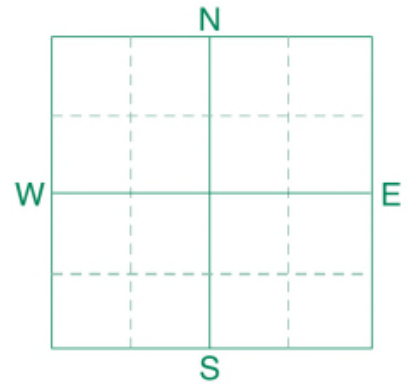
Crop 1: * Caution: Seed Placed Fertilizer Can Cause Injury * Nitrogen is credited 30 lbs for the previous crop. Nitrogen credits may need to be adjusted based on local conditions. Many crops may respond to a starter application of P & K even on high soil tests. Crop Removal: P2O5 = 64 K2O = 43 AGVISE Band guidelines will build P & K test levels to the medium range over many years.



Soil Analysis by Agvise Laboratories
 (http://www.agvise.com)
 Northwood: (701) 587-6010
 Benson: (320) 843-4109

SOIL TEST REPORT

FIELD ID 13
 SAMPLE ID
 FIELD NAME **Dennis Janzen**
 COUNTY
 TWP **NE 28-2-3e** RANGE
 SECTION QTR ACRES **160**
 PREV. CROP **Soybeans**



SUBMITTED FOR:
Weststar Pork HBH Pork

SUBMITTED BY: **EL1911**
AGRA-GOLD CONSULTING LTD
CLIFF LOEWEN
33020 RD 40 N
BLUMENORT, MB ROA 0C1

REF # **2365618** BOX # **2923**
 LAB # **NW68042**

Date Sampled **09/11/2018**

Date Received **09/12/2018**

Date Reported **9/13/2018**

Nutrient In The Soil		Interpretation				1st Crop Choice			2nd Crop Choice			3rd Crop Choice		
		VLow	Low	Med	High									
Nitrate	0-6" 10 lb/ac	****				Corn-Grain								
	6-24" 9 lb/ac					YIELD GOAL			YIELD GOAL			YIELD GOAL		
						160 BU								
	0-24" 19 lb/ac					SUGGESTED GUIDELINES			SUGGESTED GUIDELINES			SUGGESTED GUIDELINES		
						Band								
						LB/ACRE	APPLICATION	LB/ACRE	APPLICATION	LB/ACRE	APPLICATION			
Phosphorus	Olsen 9 ppm	*****				N 143		N		N				
Potassium	332 ppm	*****				P ₂ O ₅ 52	Band *	P ₂ O ₅		P ₂ O ₅				
Chloride						K ₂ O 10	Band (2x2) *	K ₂ O		K ₂ O				
Sulfur	0-6" 56 lb/ac 6-24" 96 lb/ac	*****				Cl		Cl		Cl				
Boron						S 0		S		S				
Zinc	0.90 ppm	*****				B		B		B				
Iron						Zn 2	Band	Zn		Zn				
Manganese						Fe		Fe		Fe				
Copper						Mn		Mn		Mn				
Magnesium	1693 ppm	*****				Cu		Cu		Cu				
Calcium	5429 ppm	*****				Mg 0		Mg		Mg				
Sodium	52 ppm	*****				Lime		Lime		Lime				
Org.Matter	3.8 %	*****												
Carbonate(CCE)						Soil pH	Buffer pH	Cation Exchange Capacity	% Base Saturation (Typical Range)					
									% Ca	% Mg	% K	% Na	% H	
Sol. Salts	0-6" 0.6 mmho/cm 6-24" 0.53 mmho/cm	*****				0-6" 7.6 6-24" 8.4		42.3 meq	(65-75) 64.1	(15-20) 33.3	(1-7) 2.0	(0-5) 0.5	(0-5)	

General Comments: Clays/Clay Loams (CEC range = 30+) (Fine)

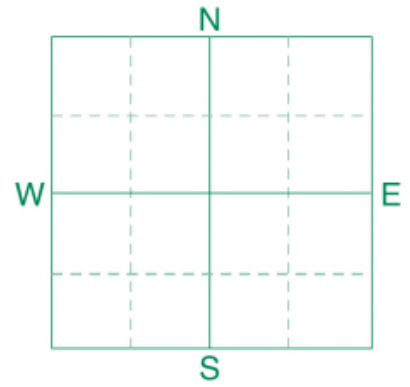
Crop 1: * Caution: Seed Placed Fertilizer Can Cause Injury * Nitrogen is credited 30 lbs for the previous crop. Nitrogen credits may need to be adjusted based on local conditions. Many crops may respond to a starter application of P & K even on high soil tests. Crop Removal: P2O5 = 64 K2O = 43 AGVISE Band guidelines will build P & K test levels to the medium range over many years.



Soil Analysis by Agvise Laboratories
 (http://www.agvise.com)
 Northwood: (701) 587-6010
 Benson: (320) 843-4109

SOIL TEST REPORT

FIELD ID 14
 SAMPLE ID
 FIELD NAME **Dennis Janzen**
 COUNTY
 TWP **NW 28-2-3e** RANGE
 SECTION QTR ACRES **160**
 PREV. CROP **Soybeans**



SUBMITTED FOR:
Weststar Pork HBH Pork

SUBMITTED BY: **EL1911**
AGRA-GOLD CONSULTING LTD
CLIFF LOEWEN
33020 RD 40 N
BLUMENORT, MB ROA 0C1

REF # **2365617** BOX # **2984**
 LAB # **NW67955**

Date Sampled **09/11/2018**

Date Received **09/12/2018**

Date Reported **9/13/2018**

Nutrient In The Soil		Interpretation				1st Crop Choice		2nd Crop Choice		3rd Crop Choice				
		VLow	Low	Med	High									
Nitrate	0-6" 9 lb/ac	*****				Corn-Grain								
	6-24" 15 lb/ac					YIELD GOAL		YIELD GOAL		YIELD GOAL				
						160 BU								
	0-24" 24 lb/ac					SUGGESTED GUIDELINES		SUGGESTED GUIDELINES		SUGGESTED GUIDELINES				
						Band								
						LB/ACRE	APPLICATION	LB/ACRE	APPLICATION	LB/ACRE	APPLICATION			
Phosphorus	Olsen 18 ppm	*****					N			N				
Potassium	344 ppm	*****					P ₂ O ₅			P ₂ O ₅				
Chloride							K ₂ O			K ₂ O				
Sulfur	0-6" 22 lb/ac 6-24" 114 lb/ac	*****					Cl			Cl				
Boron							S			S				
Zinc	1.09 ppm	*****					B			B				
Iron							Zn			Zn				
Manganese							Fe			Fe				
Copper							Mn			Mn				
Magnesium	1777 ppm	*****					Cu			Cu				
Calcium	5379 ppm	*****					Mg			Mg				
Sodium	49 ppm	*****					Lime			Lime				
Org.Matter	3.9 %	*****												
Carbonate(CCE)														
Sol. Salts	0-6" 0.68 mmho/cm	*****				Soil pH	Buffer pH	Cation Exchange Capacity		% Base Saturation (Typical Range)				
	6-24" 0.67 mmho/cm					0-6" 7.5		42.8 meq	% Ca	% Mg	% K	% Na	% H	
						6-24" 8.3			(65-75)	(15-20)	(1-7)	(0-5)	(0-5)	

General Comments: Clays/Clay Loams (CEC range = 30+) (Fine)

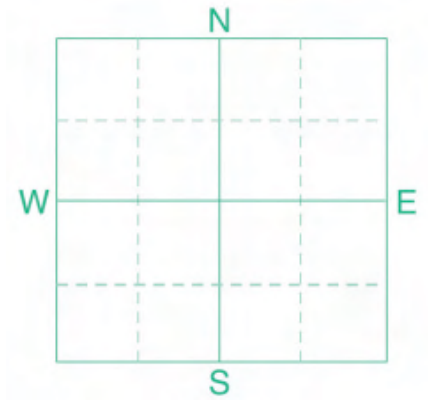
Crop 1: * Caution: Seed Placed Fertilizer Can Cause Injury * Nitrogen is credited 30 lbs for the previous crop. Nitrogen credits may need to be adjusted based on local conditions. Many crops may respond to a starter application of P & K even on high soil tests. Crop Removal: P2O5 = 64 K2O = 43 AGVISE Band guidelines will build P & K test levels to the medium range over many years.



Soil Analysis by Agvise Laboratories
 (http://www.agvise.com)
 Northwood: (701) 587-6010
 Benson: (320) 843-4109

SOIL TEST REPORT

FIELD ID **Field 15.**
 SAMPLE ID
 FIELD NAME
 COUNTY
 TWP **E 27-3-3-e** RANGE
 SECTION QTR ACRES **266**
 PREV. CROP **Canola-bu**



SUBMITTED FOR:
Weststar Pork HBH Pork

SUBMITTED BY: **EL1911**
AGRA-GOLD CONSULTING LTD
CLIFF LOEWEN
33020 RD 40 N
BLUMENORT, MB ROA **0C1**

REF # **2895242** BOX # **4846**
 LAB # **NW28511**

Date Sampled **05/04/2020**

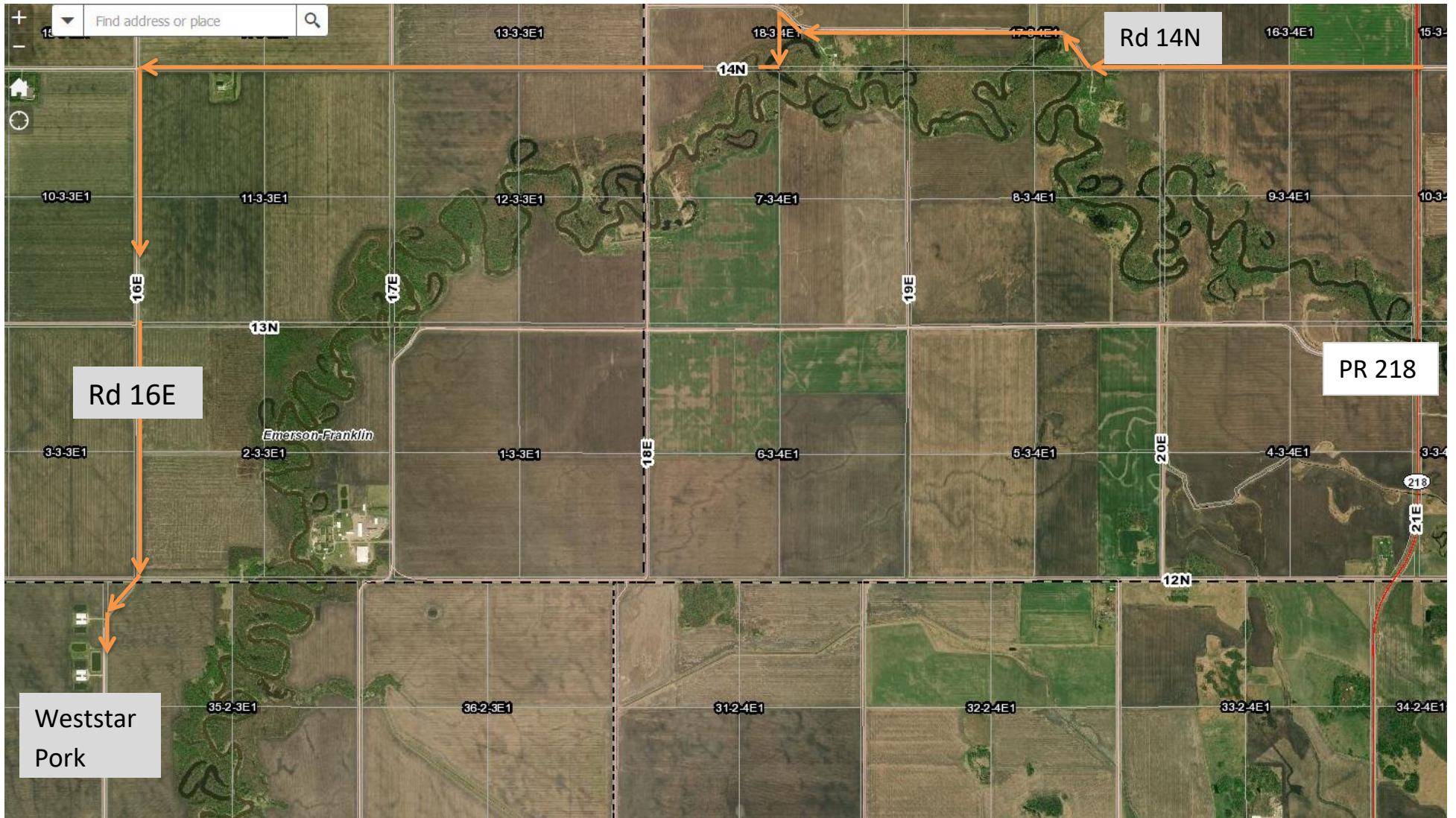
Date Received **05/06/2020**

Date Reported **5/6/2020**

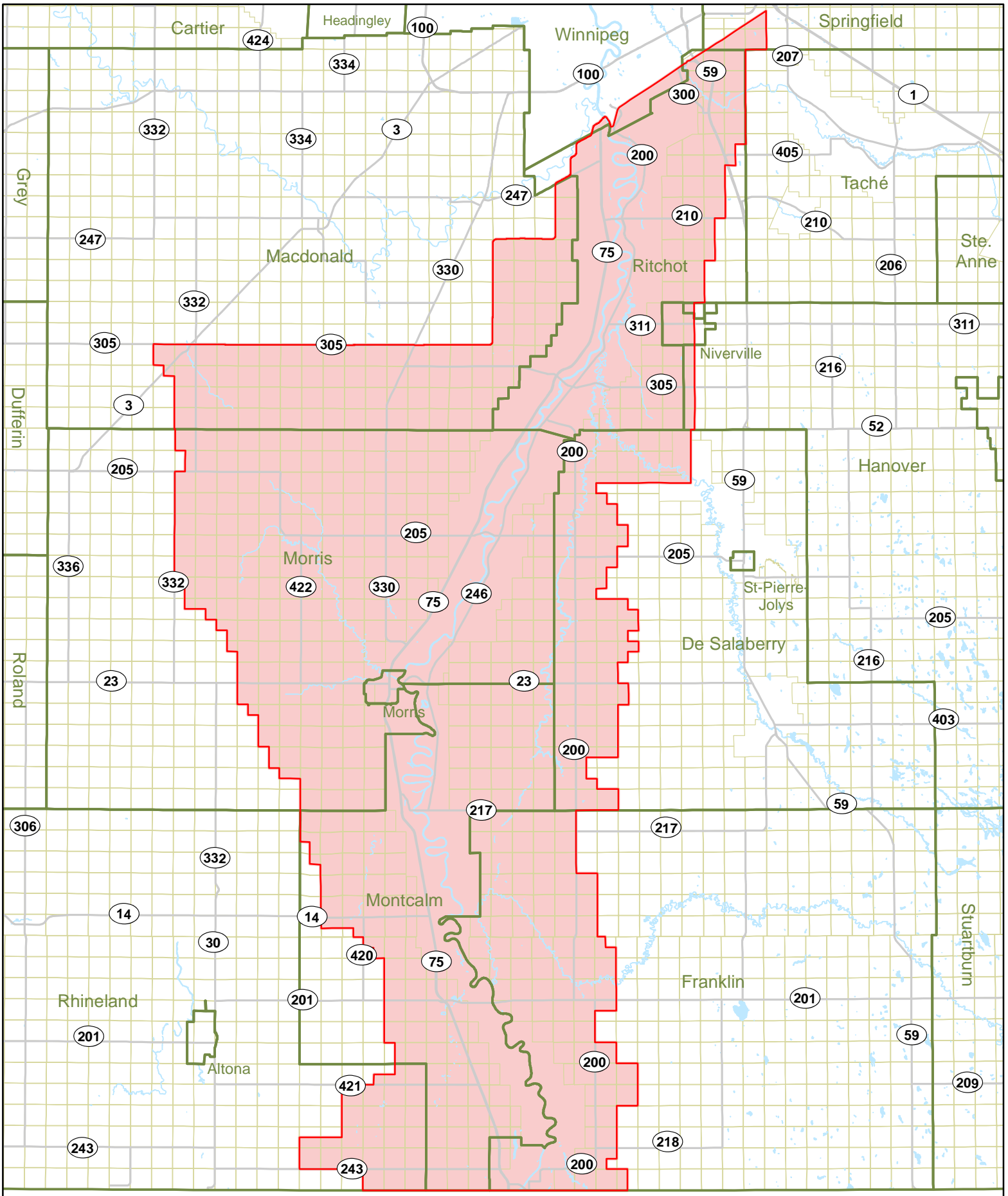
Nutrient In The Soil		Interpretation				1st Crop Choice		2nd Crop Choice		3rd Crop Choice				
		VLow	Low	Med	High									
Nitrate	0-6" 6-24"	11 lb/acre 18 lb/acre	*****	*****										
	0-24"	29 lb/acre				Wheat-Spring								
						YIELD GOAL								
						80 BU								
						SUGGESTED GUIDELINES								
Phosphorus	Olsen	8 ppm	*****	*****		Band		SUGGESTED GUIDELINES		SUGGESTED GUIDELINES				
						LB/ACRE	APPLICATION	LB/ACRE	APPLICATION	LB/ACRE	APPLICATION			
Potassium		472 ppm	*****	*****	*****	N	187	N		N				
Chloride						P ₂ O ₅	47	P ₂ O ₅		P ₂ O ₅				
						K ₂ O	10	K ₂ O		K ₂ O				
Sulfur	0-6" 6-24"	22 lb/acre 36 lb/acre	*****	*****	*****	Cl		Cl		Cl				
						S	5	S		S				
Boron						B		B		B				
Zinc		0.63 ppm	*****	*****		Zn	0	Zn		Zn				
Iron						Fe		Fe		Fe				
Manganese						Mn		Mn		Mn				
Copper						Cu		Cu		Cu				
Magnesium		1484 ppm	*****	*****	*****	Mg	0	Mg		Mg				
Calcium		6801 ppm	*****	*****	*****	Lime		Lime		Lime				
Sodium		36 ppm	*****			Soil pH		Cation Exchange Capacity		% Base Saturation (Typical Range)				
Org.Matter		4.7 %	*****	*****	*****	Buffer pH		Capacity		% Ca	% Mg	% K	% Na	% H
Carbonate(CCE)						0-6"	7.9	47.7 meq		(65-75)	(15-20)	(1-7)	(0-5)	(0-5)
Sol. Salts	0-6" 6-24"	0.67 mmho/cm 0.65 mmho/cm	*****	*****	*****	6-24"	8.3			71.2	25.9	2.5	0.3	0.0

General Comments: Soil texture is not estimated on high pH soils.

Crop 1: *CAUTION: Seed-placed fertilizer can cause injury.* May respond to starter P & K, even on high soil tests. Crop nutrient removal: P2O5 = 50 K2O = 30
 AGVISE Band guideline will build P & K test levels to the medium range over several years.



Weststar Truck Route



Upper Red River Designated Flood Area

- Municipal Boundaries
- Provincial Roadways
- Designated Flood Area

