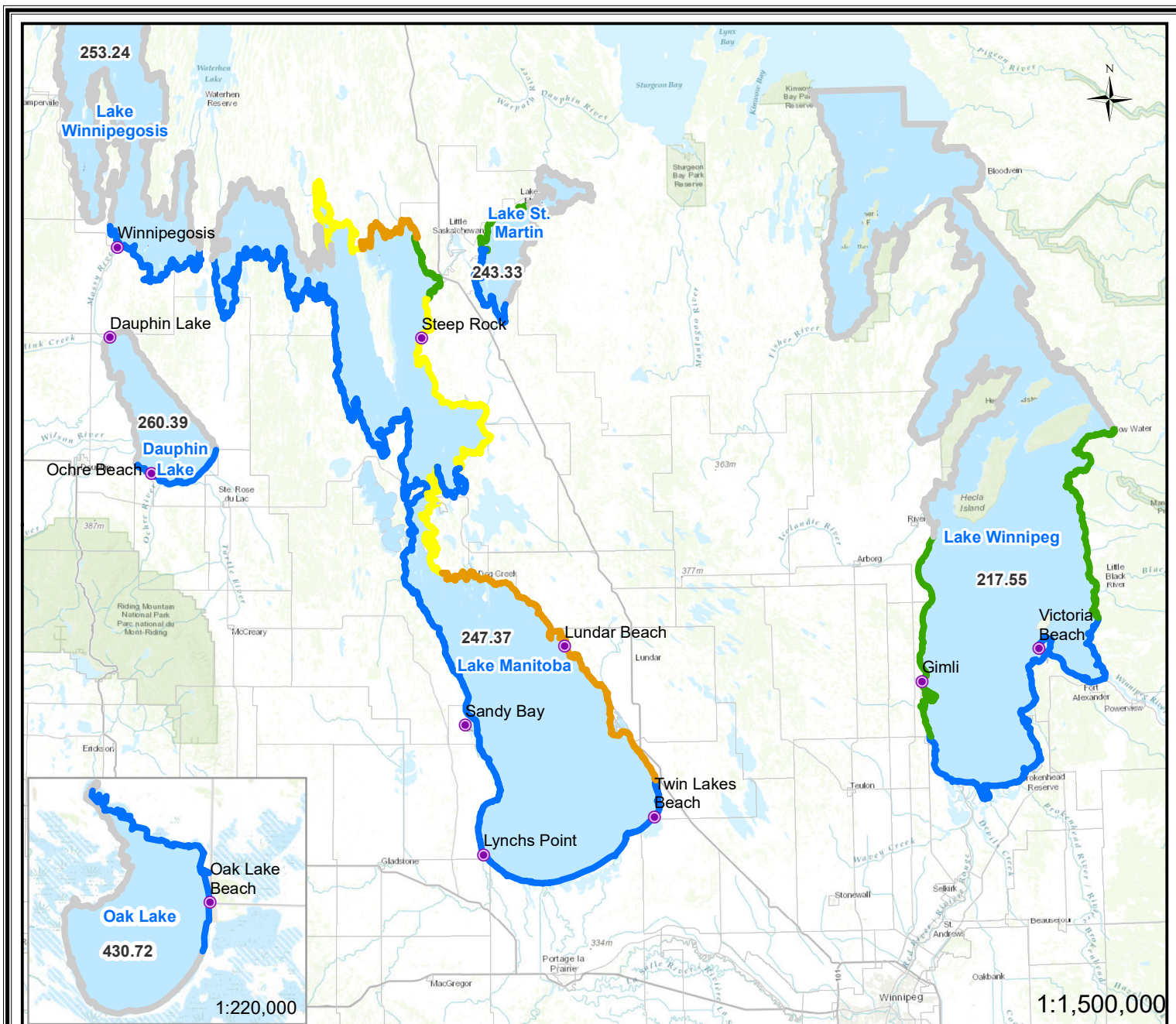


# Manitoba Lake Wind Effect Forecast for August 16 AM, 2023

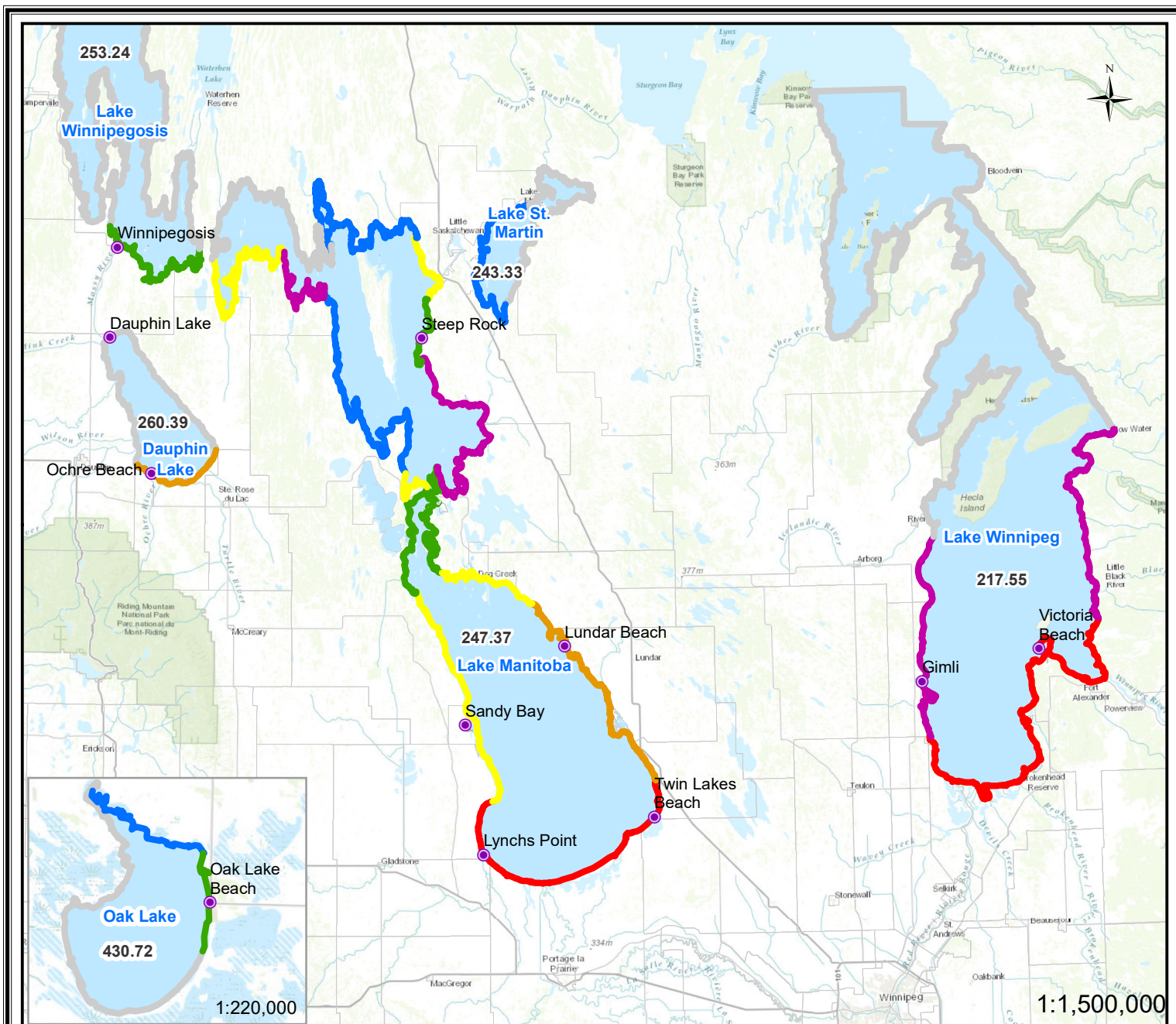


Location	Ave.Dir.from North (degree)	Ave. Speed (km/h)	Location	Ave.Dir.from North (degree)	Ave. Speed (km/h)	Wind Effect Alert Categories
Dauphin Lake	SW (246)	34	Manipogo area	W (263)	30	
MB Lake west side - Sandy Bay	SW (220)	36	Crane River area	W (250)	31	<b>High</b> Crest level increase will be in a range 0.9 ~ 1.5 meters; Wave action will be significant.
MB Lake south side - Twin Beaches	SW (216)	41	Wpg Lake - Victoria Beach	S (189)	35	<b>Moderate-High</b> Crest level increase will be in a range 0.6 ~ 0.9 meters; Wave action will be considerable.
MB Lake middle - Vogar/The Narrows	SW (221)	40	Wpg Lake - Gimli Beach	S (193)	32	<b>Moderate</b> Crest level increase will be in a range 0.3 ~ 0.6 meters; Wave action will be moderate.
MB Lake east side - Lunder Beach	SW (220)	37	Wpg Lake - Alberta Beach	S (189)	28	<b>Low</b> Crest level increase will be less than 0.3 meters; Wave action will be low.
Northerd 1	SW (237)	29	Wpg Lake - O'Hanly	S (190)	28	<b>No Alert</b> Wind set-up and wave action are predicted to be light.
Northerd 2	SW (247)	27	Wpg Lake south side	S (189)	34	<b>No Data</b> Wind effect data not available.
Guynesmer	SW (234)	38	Lake Winnipegosis south side	W (268)	27	
The Bluff	SW (229)	42	Oak Lake east side community	W (286)	26	
Wapah area	SW (227)	45	Oak Lake north side community	W (286)	26	
Dolly Creek area	SW (226)	41	Lake St. Martin north side	SW (227)	26	
Mathesons Point	SW (225)	41	Lake St. Martin west side	SW (232)	27	
Steep rock	SW (229)	39	Lake St. Martin southwest side	SW (232)	27	
Fairford area	SW (237)	29	Lake St. Martin south Side	SW (228)	30	

**Note: All water levels labeled within the lakes are current wind eliminated lake levels provided in meters**



# Manitoba Lake Wind Effect Forecast for August 16 PM, 2023



Location	Ave.Dir.from North (degree)	Ave. Speed (km/h)	Location	Ave.Dir.from North (degree)	Ave. Speed (km/h)	Wind Effect Alert Categories	
Dauphin Lake	NW (319)	44	Manipogo area	NW (321)	45	Severe	Crest level increase will be greater than 1.5 meters; Wave action will be very significant and forceful.
MB Lake west side - Sandy Bay	NW (317)	49	Crane River area	NW (318)	43		
MB Lake south side - Twin Beaches	NW (318)	55	Wpg Lake - Victoria Beach	NW (303)	53	High	Crest level increase will be in a range 0.9 ~ 1.5 meters; Wave action will be significant.
MB Lake middle - Vogar/The Narrows	NW (317)	52	Wpg Lake - Gimli Beach	NW (305)	44		
MB Lake east side - Lundar Beach	NW (317)	50	Wpg Lake - Alberta Beach	NW (302)	46	Moderate-High	Crest level increase will be in a range 0.6 ~ 0.9 meters; Wave action will be considerable.
Northing 1	NW (319)	35	Wpg Lake - O'Hanly	NW (300)	44		
Northing 2	NW (318)	36	Wpg Lake south side	NW (303)	50	Moderate	Crest level increase will be in a range 0.3 ~ 0.6 meters; Wave action will be moderate.
Guynemer	NW (319)	48	Lake Winnipegosis south side	NW (325)	42		
The Bluff	NW (318)	49	Oak Lake east side community	NW (321)	38	Low	Crest level increase will be less than 0.3 meters; Wave action will be low.
Wapah area	NW (318)	54	Oak Lake north side community	NW (321)	38		
Dolly Creek area	NW (318)	53	Lake St. Martin north side	NW (318)	35	No Alert	Wind set-up and wave action are predicted to be light.
Mathesons Point	NW (317)	49	Lake St. Martin west side	NW (319)	34		
Sleep rock	NW (319)	45	Lake St. Martin southwest side	NW (319)	34	No Data	Wind effect data not available.
Fairford area	NW (319)	35	Lake St. Martin south Side	NW (319)	39		

**Note: All water levels labeled within the lakes are current wind eliminated lake levels provided in meters**