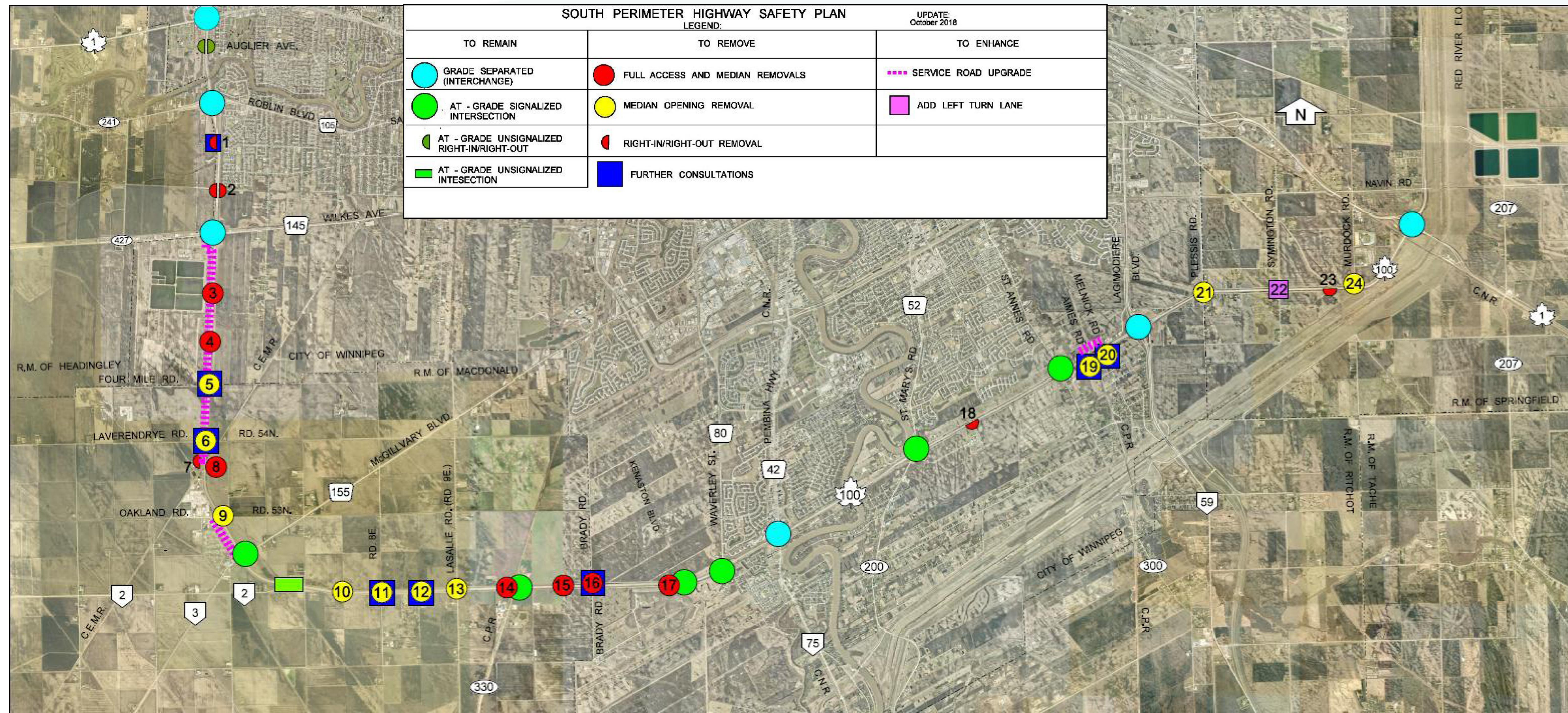


South Perimeter Safety Plan

- **Proposed Short Term Safety Plan:**
 - Reduce conflict points along the Perimeter Highway, and improve highway traffic operations.
 - The Brady Road intersection will be completely closed after the construction of a new access road is completed.
- This is a significant interim safety measure to reduce the number of collisions on the Perimeter Highway.

South Perimeter Safety Plan



- This safety plan will result in the full or partial closure of controlled access points and median openings at twenty-four (24) locations along the South Perimeter Highway.
- In the summer of 2019, work was completed at twenty-three (23) of the twenty-four (24) locations.



