

NOTES:

1. ALL SCALES ARE APPROXIMATE.
2. ALL DIMENSIONS ARE IN MILLIMETERS.
3. THE ORIGINAL SEALED & SIGNED DRAWING IS IN TRAFFIC ENGINEERING.

REVISIONS		
DATE	DESCRIPTION	BY

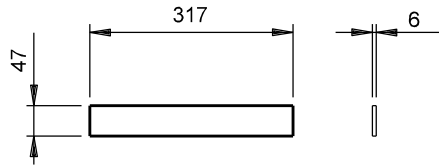
Manitoba 
**Infrastructure and
 Transportation**
 TRAFFIC ENGINEERING



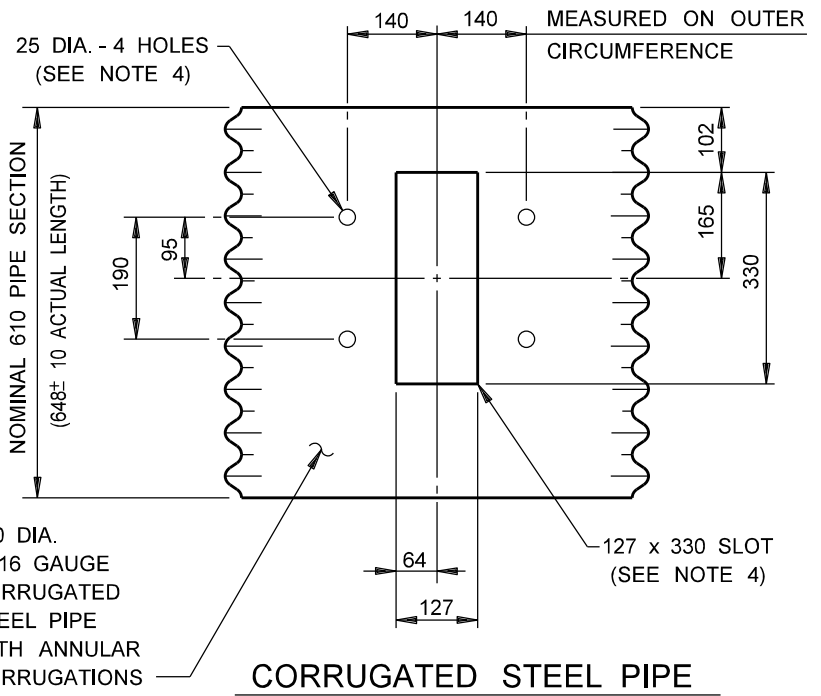
**ECCENTRIC
 LOADER HEAD**

SHEET NO:	1 OF 3
DATE:	2012 - 12
DRAWN:	D.C.

TFMM99

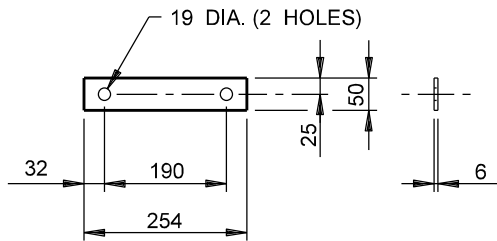


STEEL PLATE
(4 REQUIRED)

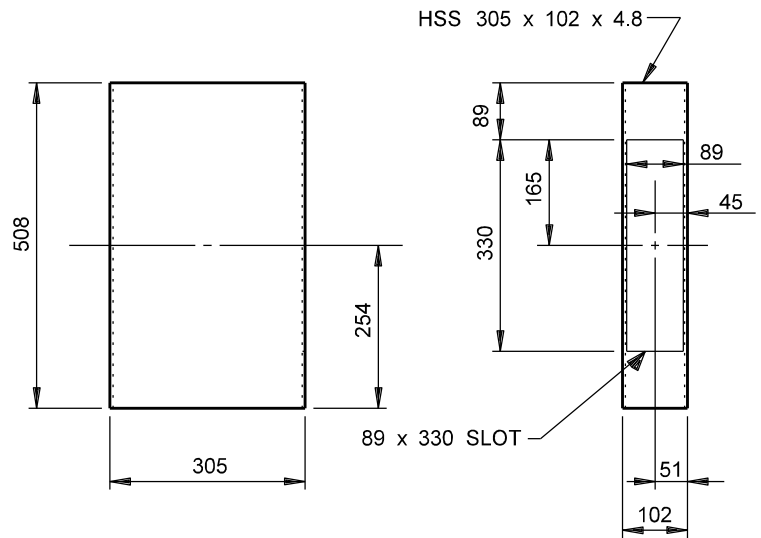


610 DIA.
X 16 GAUGE
CORRUGATED
STEEL PIPE
WITH ANNULAR
CORRUGATIONS

CORRUGATED STEEL PIPE

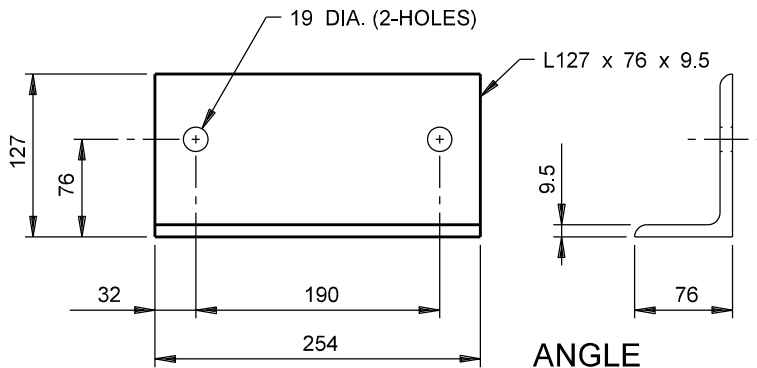


STEEL PLATE WASHER



STRUCTURAL TUBE

(SEE SHEET 3 OF 3 FOR ALTERNATIVE)



ANGLE

NOTES:

1. ALL SCALES ARE APPROXIMATE.
2. ALL DIMENSIONS ARE IN MILLIMETRES.
3. THE ORIGINAL SEALED & SIGNED DRAWING IS IN TRAFFIC ENGINEERING.
4. DO NOT USE FLAME CUTTING FOR THESE OPENINGS.

REVISIONS		
DATE	DESCRIPTION	BY
05-2013	CORRECTED DIMENSION	DC

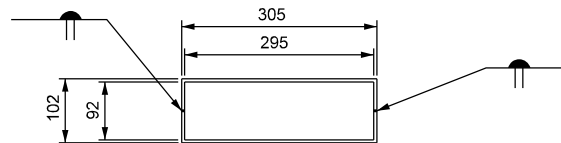
Manitoba 
Infrastructure and
Transportation
TRAFFIC ENGINEERING



**ECCENTRIC
LOADER HEAD**

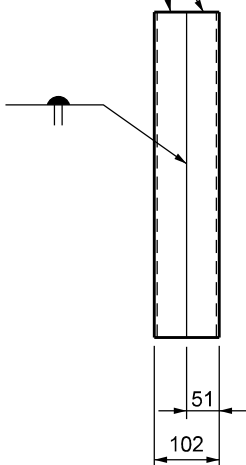
SHEET NO:	2 OF 3
DATE:	2012 - 12
DRAWN:	D.C.

TFMM99

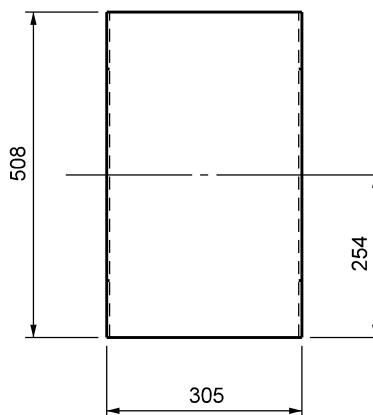


END VIEW

2 - BENT PLATE
508 x 407 x 4.8

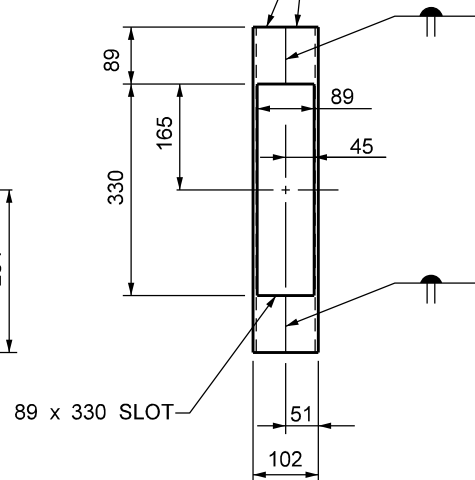


LEFT VIEW



STRUCTURAL TUBE
ALTERNATIVE

2 - BENT PLATE
508 x 407 x 4.8



RIGHT VIEW

NOTES:

1. ALL SCALES ARE APPROXIMATE.
2. ALL DIMENSIONS ARE IN MILLIMETRES.
3. THE ORIGINAL SEALED & SIGNED DRAWING IS IN TRAFFIC ENGINEERING.
4. DO NOT USE COIL STEEL.

REVISIONS		
DATE	DESCRIPTION	BY
2013-05	CORRECTED DIMENSION	DC
2014-01	ADD ALTERNATIVE	S.S.

Manitoba 
**Infrastructure and
 Transportation**
 TRAFFIC ENGINEERING



**ECCENTRIC
 LOADER HEAD**

SHEET NO:	3 OF 3
DATE:	2012 - 12
DRAWN:	D.C.

TFMM99