

LAKE MANITOBA LAKE ST. MARTIN

Ji-zaagijjiwangin Ziibiikaanan Izhichigewin

Eyaamagakin Izhichigewining

Gikenjigaadeg Izhichigewin

2011 gaa-akiiwang, zhaawanong Manitoba miziwe gii-mooshka'am, zhidwa Lake Manitoba gii-ishpaagamin nibi onji Waterhen River, Whitemud River zhidwa Portage Diversion. Onjida ji-ozhichigaadegin ini ziibiikaanan ji-zaagijjiwang nibi onji Lake Manitoba zhidwa Lake St. Martin ji-bimenjigaadeg nibi omaa Manitoba. Ono ziibiikaanan da:-

- Nawach ji-mino-bimenjigaadeg nibi imaa Lake Manitoba zhidwa Lake St. Martin ji-wiijiweseg ezhichigeng Red River Floodway, Portage Diversion, Shellmouth Dam zhidwa Reservoir nibiin onji.
- Nawach waawiiba ji-mooshka'anzinog zhidwa aaniin minik mooshka'ang.
- Nawach minik ji-banaajichigemagasinog mooshka'ang, ji-migoshkaaji'aasig imaa gechiwaag eyaanid.

Aaniin Wenji-izhichigeng Owe

O'owe aaniish aandi eyaamagak Manitoba aaniin gaye ayinadinaag, miziwe daa-wenji-mooshka'an. Zhaawanong, waabanong, ningaabiwanong onjiwan nibi izhi Manitoba jibwaa giwedonog izhijiwang izhi Hudson Bay (nashke Figure 1). Odaanaang gete Manitoba gii-inakamigaa onji gete mikom wajiin, mii dash niibowa iwe aki nabagakamigaa, mii wenji-mooshka'ang apii ozhi'omagak nibi ningoji onji. Geget Manitoba wenji-mooshka'an, aazha dash odaanaang gegoon gii-bi-izhichigem ji-ategin imaa gegoon ji-wiiji'iwemagakin apii ningoji mooshka'ang.

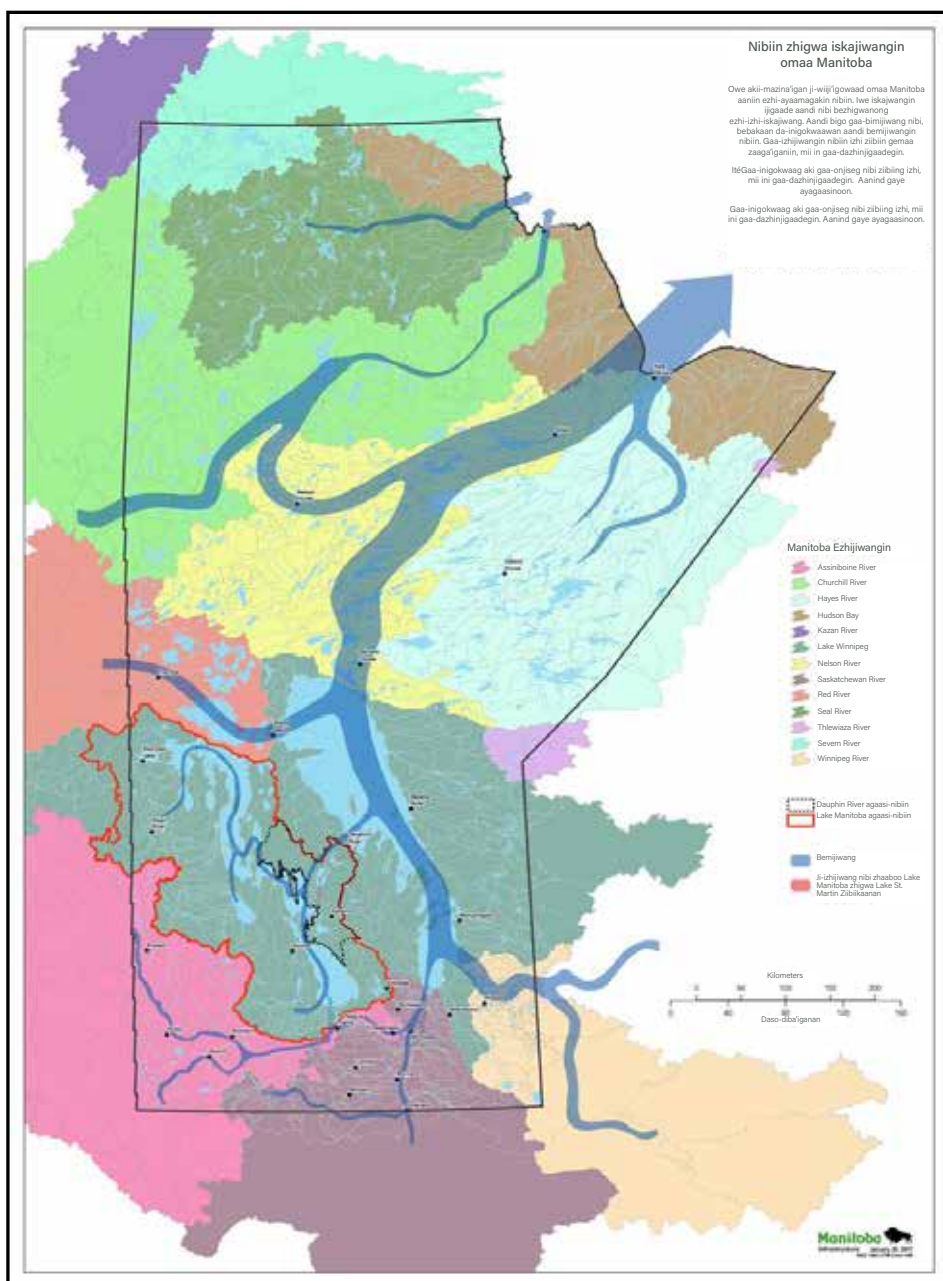


Figure 1: Zhaabojiwang nibi Manitoba

Ji-bimenjigaadeg Gaa-mooshka'ang Province

Aazha aaniin dasing gaa-bi-mooshka'ang omaa, gii-ozhichigaadewan nanaandok gegoon omaa Manitoba ji-migoshkaajichigemagasinog mooshka'ang. Daabishkoo ini Shellmouth Dam, Portage Diversion, Red River Floodway zhigwa iwe Fairford River gaa-bimenjigaadeg nibi. Awashime gikenjigewin gidaa-mikaan [Flood Control Infrastructure and Historic Floods webpage](#).

Gegoon gaa-niinamaagin Bimenjigaadeg nibi

Minik gaa-bi-mooshka'ang apane 100 dasowaki, 2011 gii-nishike-izhise. Gii-ishpaagamadoon gakina Assiniboine River, Lake Manitoba gaye ziibiin:

- Apii ani-ziigwang, ani-niibiing gaye, ningideg, goon ningizod, gii-gagimiwang bebakaan ningoji Manitoba, gii-wiijiwese ji-mamooshka'ang, gii-ishpaagamadoon bemijiwang imaa Assiniboine River jiigaya'ii Portage la Prairie, 53,100 (cfs) gii-bimijiwan, maawanj gaa-bi-izhiseg.
- Nibi aapiji gii-ishpaagamin 817.05 mizid imaa Lake Manitoba apii July 2011 gaa-izhiseg, mii iwe gaye maawanj gaa-bi-izhiseg.
- Nibi 805.6 mizid gii-izhi-ishpaagamin Lake St. Martin July 2011 gaa-izhiseg, mii iwe miinawaa maawanj gaa-bi-ishpaagaming.

Apii 2011 gaa-mooshka'ang, gichi-ogimaawinan awashime \$2.1 billion gii-inagindeni ji-maamiinochigeng. Iwe gaa-gii-mooshka'ang 2011, gii-mikigaadewan ningoji niinamaagin gegoon gaa-bimenjigaadegin niibiin. 2012 gaa-akiwang, gii-mooshka'anoon [Assiniboine River and Lake Manitoba Basins Flood Mitigation Study](#) gichi-ogimaawin ogii-onatoonaawaa' ji-andooshkigaadenig aandi imaa gegoon ge-miinochigengiban ji-banaajichigemagasinog mooshka'ang, ogii-zagakibii'aanaawaa', mii gaa-izhi-dibaajimowaad wegonenan enendamowaad.

**Iwe 817.05 mizid minik epiichi-ishpaagaming nibi giishin dagonigaadesinog noodin. Nawach ishpaagamin nibi apii naanooding ningoji.*

Iwe zagakibii'igan gii-ikidom, jiiGew Lake Pineimuta zhigwa Lake St. Martin nawach niinamiziwig ji-mooshka'ang imaa gechiwaag, ginwezh iwe gii-bi-zanagad. (Inaabin Figure 2). Gii-ojaanimendaam ji-mooshka'ang omaa, zhemaak ji-dazhiikigaadeg. Gii-mikigaade gaye bimenjigaadesinog nibi onjijiwang onji Waterhen River, nawach daa-gichi-mooshka'an Lake Manitoba, mii daa-aanikese izhi Lake St. Martin, dabasakamigaa aaniish imaa zhigwa bangii eta zaagijijiwan onji Dauphin River, mii daa-wenji-mooshka'an iwe zaaga'igan. Nawach bangii nibi daa-ate Lake St. Martin apiich wiin Lake Manitoba, mii dash da-biinjiwan nibi onji imaa Fairford River ziibiikaan gaa-bimenjigaadeg nibi.

Lake Manitoba zhigwa Lake St. Martin Ziibiikaan Gaa-bimenjigaadeg Nibi

Iwe Assiniboine River zhigwa Lake Manitoba Basins Flood Mitigation Study gaa-anokaadamowaad gii-ikidowag wegonenan ji-onachigaadegibaniin, daabishkoo oshki-ziibiikaan ozhichigaadeg Lake Manitoba onji, mii zhigwa Lake St. Martin ziibiikaan daa-aabadad zhemaak ji-zaagijijiwang nibi, 2011 gii-giizhichigaadeban. Apii owe ikidong, gii-ganawaabanjigaade megwaa gaa-dazhiikigaadeg izhichigewin, mii ini Lake Manitoba zhigwa Lake St. Martin ziibiikaan.

Onjida ji-ayaamagakin ono ziibiikaan, gii-ikidowag igi gaa-naagajitoowaad mooshka'ogowin [2011 Flood Review Task Force](#), zhigwa igi [Lake Manitoba and Lake St. Martin Regulation Review Committee \(2013\)](#).

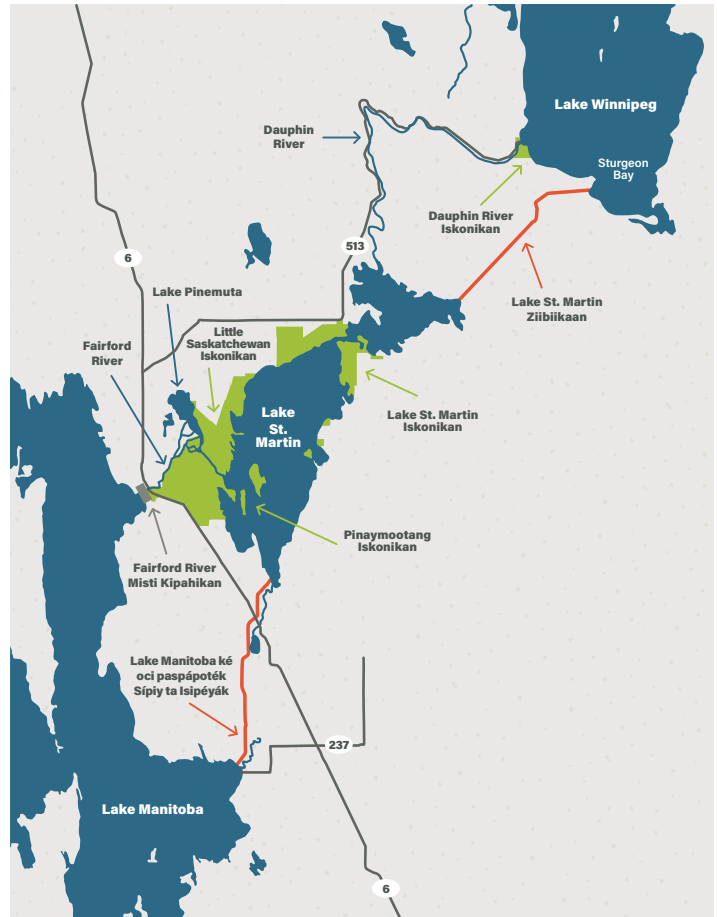


Figure 2: Gechiwaag Lake Pineimuta zhigwa Lake St. Martin daa-wenji-mooshka'amoog

Ginoonde-noondaagoom

Daga wiindamawishinaam aaniin ge-izhisegiban apii wiidabingeyan gaa-okobing, gemaa gidaa-ganoonaa gechiwaag iwe gaa-inanokiid, ogimaakaan odanokiiwining, gichi-ogimaa gaa-anokiing, gemaa awiya gekenimad izhibii'an izhi outletchannels@gov.mb.ca. Outlet Channels Project inaabin [Outlet Channels Project website](#).

Giiyaabi gegoo noonde-gikendaman

Bebakaan ozhibii'igewinan gii-ozhichigaadewan ji-gikenjigaadeg wegonenan eyaamagakin imaa Outlet Channels Project izhichigewin gaa-ijigaadeg, daabishkoo:

- Eyaamagakin Izhichigewining
- Ge-maamiinochigaadegin Izhichigewining
- Epiitaagamingin Nibii, Bemijiwang Minik Nibi
- Meshkwajichigaadegin
- Enokaadegin

Gakina ji-waabandaman ono ozhibii'iganan, izhaan [Outlet Channels Project website](#).