

jdb project engineering inc.

MAIL: 1-880L 15th STREET, WINKLER, MB, R6W 0H5

OFFICE: ROBLIN PLAZA, 880 – 15th STREET, WINKLER, MB, R6W 0H5

Phone: (204) 331-4440 Cell: (204) 332-2169 Email: jbotha@jdbprojects.ca



July 26, 2017

jdb project #059

*Cory Switzer, P.Eng.
Manitoba Sustainable Development
Environmental Approvals
160 -123 Main St.
Winnipeg MB
R3C 1A5*

Att: Cory Switzer, P. Eng.

**RE: SWAMP Waste Authority – Licence 2109 S2 R – Notice of Alteration:
Roll-off-Bin and Vac-Truck Drop-Off Sites**

Dear Cory,

On behalf of the SWAMP Waste Authority, we hereby submit a Notice of Alteration (NOA) for the establishment of a Roll-off-Bin Site and a Vac-Truck Drop-Off Site. This includes for the phasing-out of the existing and closure of the Pesticide Container Drop-Off Site. **Figure 1** is hereby attached, which indicates the layout of the two proposed Sites, the existing Pesticide Container Site and the proposed Mattress Drop-Off Site, which is considered as part of the Bin Site.

The Roll-off-Bin Site (refer to **Figure 2**) will allow for two closed bins with doors to receive pesticide containers and four open bins to receive other recyclable material.

The Vac-Truck Drop-Off Site (refer to **Figure 3**) will only receive non-contaminated soil material from Vac-Trucks; mostly from removing soil by vacuum to expose existing utility services.

Once the bins are in place for the pesticide containers, the existing Pesticide Container Site will be cleaned up and filled with soil and be landscaped. The containers already there will be removed and the soil at this site will be removed about 100mm thick. The insitu soil will then be tested for pesticide residue, and if the tests passed, the hole will be filled with clean soil and landscaped. If tests did not pass, another layer of 100mm soil will be removed and the insitu soil then tested again. A decision will then have to be made how to proceed if these second round of tests failed.

The Vac-Truck Drop-Off Site will function as follows:

- The Vac-Trucks will park on the concrete drop-off pad, release its load on top of this pad and exit.
- The front-end loader being used at the landfill operations will move the dumped material into the solids settling area to allow for most water to drain out of the soil into the existing ditch as this water is not considered to be polluted.
- The concrete drop-off pad is designed to let water run-off into the solids settling area immediately during and after the load has been discharged.
- Once the solids settling area has been filled to capacity the front-end loader will empty this area and move to the storage area for immediate or delayed removal to the landfill operations to be used as cover material for the compacted waste.

There is no wish to alter any of the existing licence clauses but a Notice of Alteration (NOA) seems to be required for approval to establish the abovementioned Sites.

A Tender has been prepared to be issued but the Construction Contract will only be awarded once you approved the construction of these Sites.

We hope the above meets with your approval, but if you have any questions or comments or need additional clarification and/or information don't hesitate to contact me.

Sincerely



Johan Botha, P.Eng.

Attached: **Figure 1 – Site Plan**
 Figure 2 – Roll-off-Bin Site
 Figure 3 – Vac-Truck Drop-Off Site

CC: *Hank Hildebrand, SWAMP Waste Authority*
 Brent Kletke, SWAMP Waste Authority
 Dale Toews, CAO, RM of Stanley
 Alfred Loewen, Councillor, RM of Stanley



PLAN VIEW
SCALE = NTS

jdb project engineering inc.

ROBLIN PLAZA, BUILDING L 880 - 15TH STREET WINKLER, MB R6W 0H5
PH: (204) 331-4440 EMAIL: jbotha@jdbprojects.ca

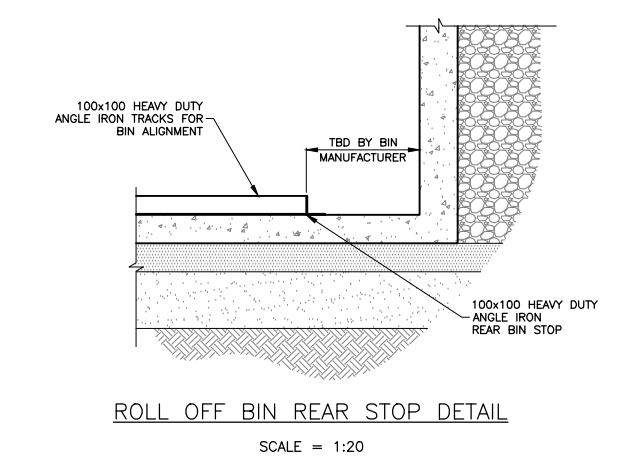
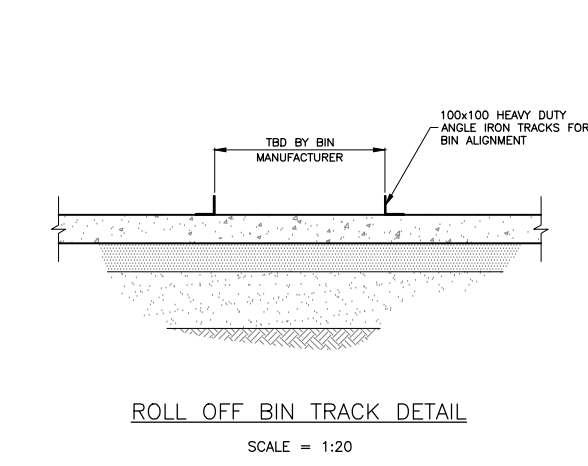
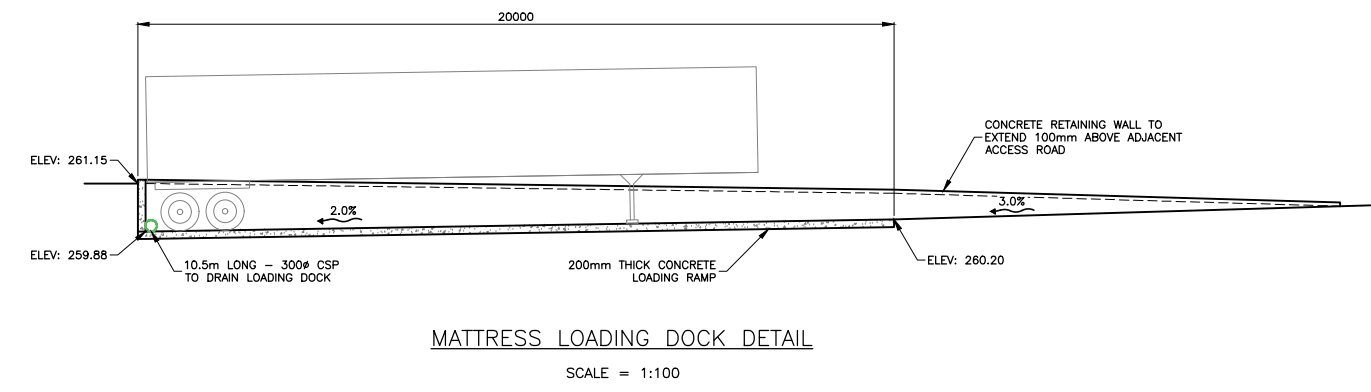
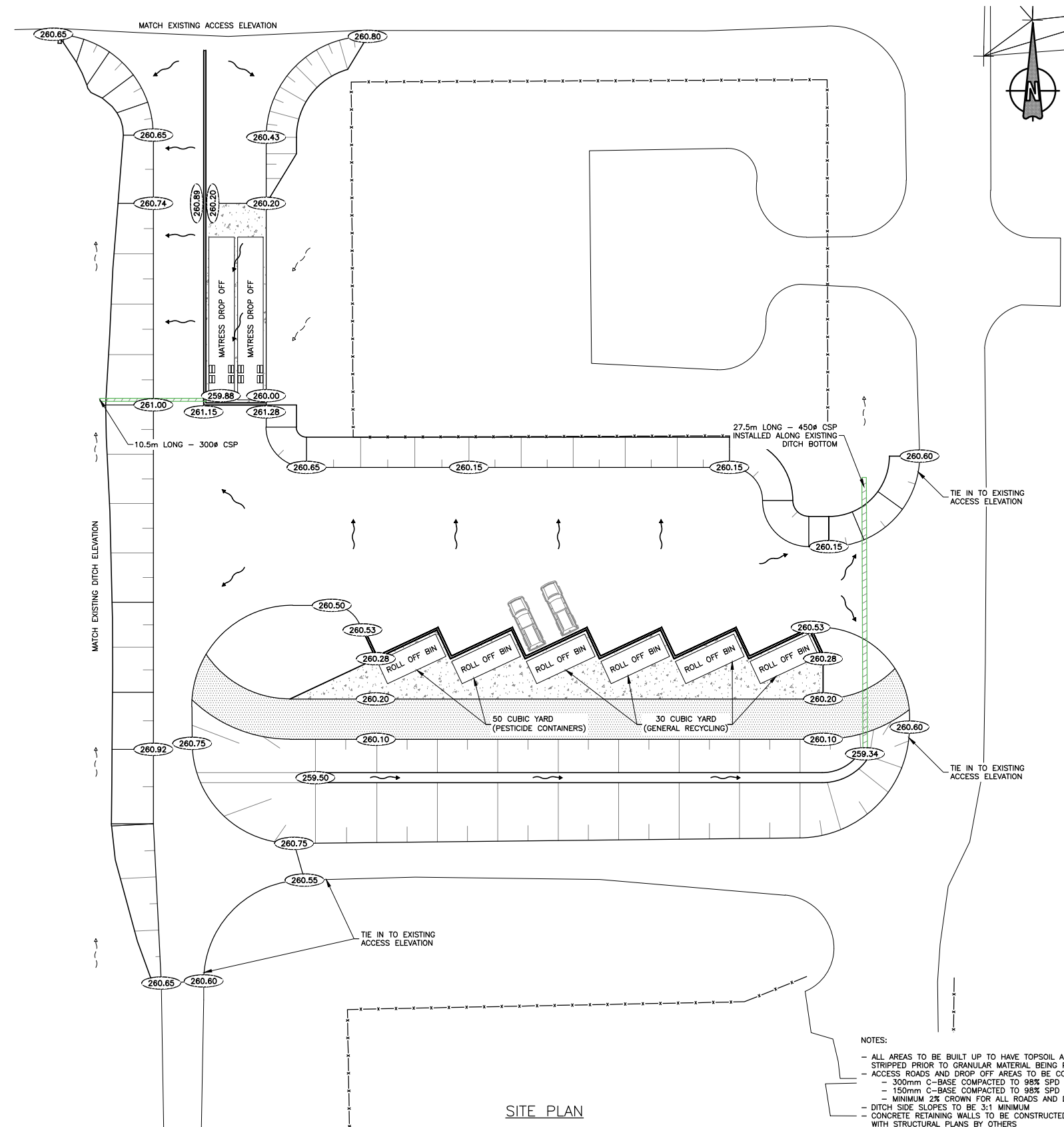


FIGURE 1



204-325-2216
www.swamplandfill.ca
Box 550, Winkler MB R6W 4A7

SITE PLAN



jdb project engineering inc.

ROBLIN PLAZA, BUILDING L 880 - 15TH STREET WINKLER, MB R6W 0H5
PH: (204) 331-4440 EMAIL: jbotha@jdbprojects.ca



FIGURE 2



204-325-2216
www.swamplandfill.ca
Box 550, Winkler MB R6W 4A7

ROLL OFF BIN SITE

