



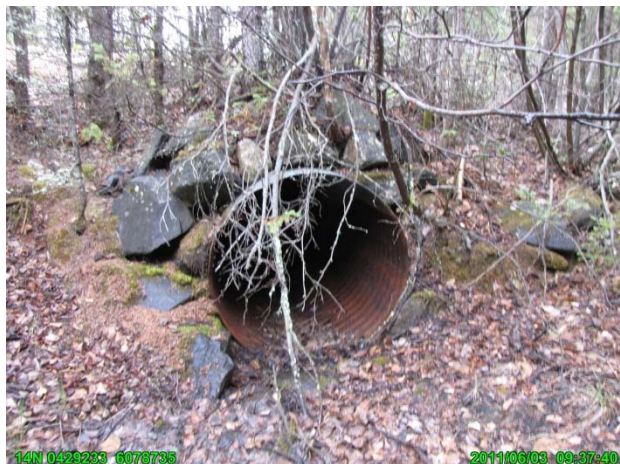
Photograph 01 ↑

RB01: Culvert on the north side of the rail bed



Photograph 02 ↑

RB01: Dry stream bed on the north side of the rail bed



Photograph 03 ↑

RB01: Culvert on the south side of the rail bed



Photograph 04 ↑

RB01: Dry stream bed on the south side of the rail bed



Photograph 05 ↑

RB04: Overgrown culvert on the north side of the rail bed



Photograph 06 ↑

RB04: Stream running parallel to the rail bed along the north side



Photograph 07 ↑

RB04: Overgrown culvert on the south side of the rail bed



Photograph 08 ↑

RB04: Stream on the south side of the rail bed



Photograph 09 ↑

RB05: Culvert on the north side of the rail bed



Photograph 10 ↑

RB05: Stream on the north side of the rail bed



Photograph 11 ↑

RB05: Culvert on the south side of the rail bed



Photograph 12 ↑

RB05: Stream on the south side of the rail bed



Photograph 13 ↑

RB06: Submerged culvert on the north side of the rail bed



Photograph 14 ↑

RB06: Standing water on the north side of the rail bed



Photograph 15 ↑

RB06: Submerged culvert on the south side of the rail bed



Photograph 16 ↑

RB06: Standing water on the south side of the rail bed



Photograph 17 ↑
RB08: Culvert on the north side of the rail bed



Photograph 18 ↑
RB08: Dry stream bed on the north side of the rail bed



Photograph 19 ↑
RB08: Culvert on the south side of the rail bed



Photograph 20 ↑
RB08: Dry stream bed on the south side of the rail bed



Photograph 21 ↑

RB09: Overgrown culvert on the north side of the rail bed



Photograph 22 ↑

RB09: Ditch parallel to rail bed along the rail bed



Photograph 23 ↑

RB09: Overgrown culvert on the south side of the rail bed



Photograph 24 ↑

RB09: Standing water on south side of rail bed



Photograph 25 ↑

RB10: Overgrown culvert on the north side of the rail bed



Photograph 26 ↑

RB10: Stream on the north side of the rail bed



Photograph 27 ↑

RB10: Overgrown culvert on the south side of the rail bed



Photograph 28 ↑

RB10: Saturated low lying area on the south side of the rail bed