

Appendix **G**

Historic Resources Branch Correspondence

From: [+WPG574 - HRB Archaeology \(SCH\)](#)
To: [Gifford, Marlene](#)
Subject: [EXTERNAL] RE: Heritage Resources Screening Request - Canadian Premium Sand - Solar Glass Manufacturing Facility Project Site
Date: August 11, 2021 9:30:51 AM
Attachments: [image001.png](#)
[Basic HRPP Guidelines Key Questions and Protocols to Consider_V2.zip](#)
[FactSht_e \(2\) Human Remains English SCH_rev.pdf](#)
[FactSht_f \(2\) Human Remains French SCP_rev.pdf](#)

Hi Marlene,

The Archaeological Assessment Services Unit (AASU) has completed its review of the proposed solar plant.

Conditionally approve – Please implement an HRPP if heritage resources are accidentally encountered.

The potential to impact significant heritage resources is believed to be low and, therefore, the Historic Resources Branch has no immediate concerns with the proposed project at this time.

If at any time, however, heritage resources are encountered in association with these lands during testing and development, the Historic Resources Branch may require that an acceptable heritage resource management strategy be implemented by the developer to mitigate the effects of development on the heritage resources.

We recommend a heritage resource protection plan (HRPP) be included in planning and construction in the event heritage resources (including human remains and palaeontological resources) are accidentally encountered. The HRPP consists of operational procedures to limit damage or destruction of heritage resources accidentally found during site work. This document assists informing managers, employees, contractors on what to do and whom to call should heritage resources accidentally be encountered when testing and development is underway on site.

Please find attached a Heritage Resources Protection Plan (HRPP) template that proponents/contractors/operators can use as a guide, as well as a fact sheet outlining the legal provisions involving found human remains.

If you have any questions or comments, please feel free to contact the Branch as below.

Reid Graham

Impact Assessment Archaeologist
Historic Resources Branch | Manitoba Sport, Culture and Heritage
213 Notre Dame Avenue, Main Floor | Winnipeg, MB | R3B 1N3
Reid.Graham@gov.mb.ca
t. 204.945.2118

From: Gifford, Marlene <Marlene.Gifford@aecom.com>

Sent: August 3, 2021 9:38 AM

To: +WPG574 - HRB (SCH) <hrb@gov.mb.ca>; +WPG574 - HRB Archaeology (SCH) <HRB.archaeology@gov.mb.ca>

Cc: Samoiloff, Cliff <Cliff.Samoiloff@aecom.com>

Subject: Heritage Resources Screening Request - Canadian Premium Sand - Solar Glass Manufacturing Facility Project Site

CAUTION: This email originated from an External Sender. Please do not click links or open attachments unless you recognize the source.

ATTENTION: ce courriel provient d'un expéditeur externe. Ne cliquez sur aucun lien et n'ouvrez pas de pièce jointe, excepté si vous connaissez l'expéditeur.

Good morning,

I am currently working on an Environment Act Proposal for a currently **Confidential** Solar Panel Glass Manufacturing Facility that will be located in the City of Selkirk, Manitoba (see attached kmz file for Project Site boundary). The land is currently owned by the City of Selkirk.

Canadian Premium Sand (CPS) is in the process of negotiating a land purchase agreement from the City of Selkirk.

CPS is still in the design phase, and final locations of project components have not been determined to date. However, project components such as access road and rail access to the site, a manufacturing plant and silos for storage of raw materials will be located within the attached Project Site boundary.

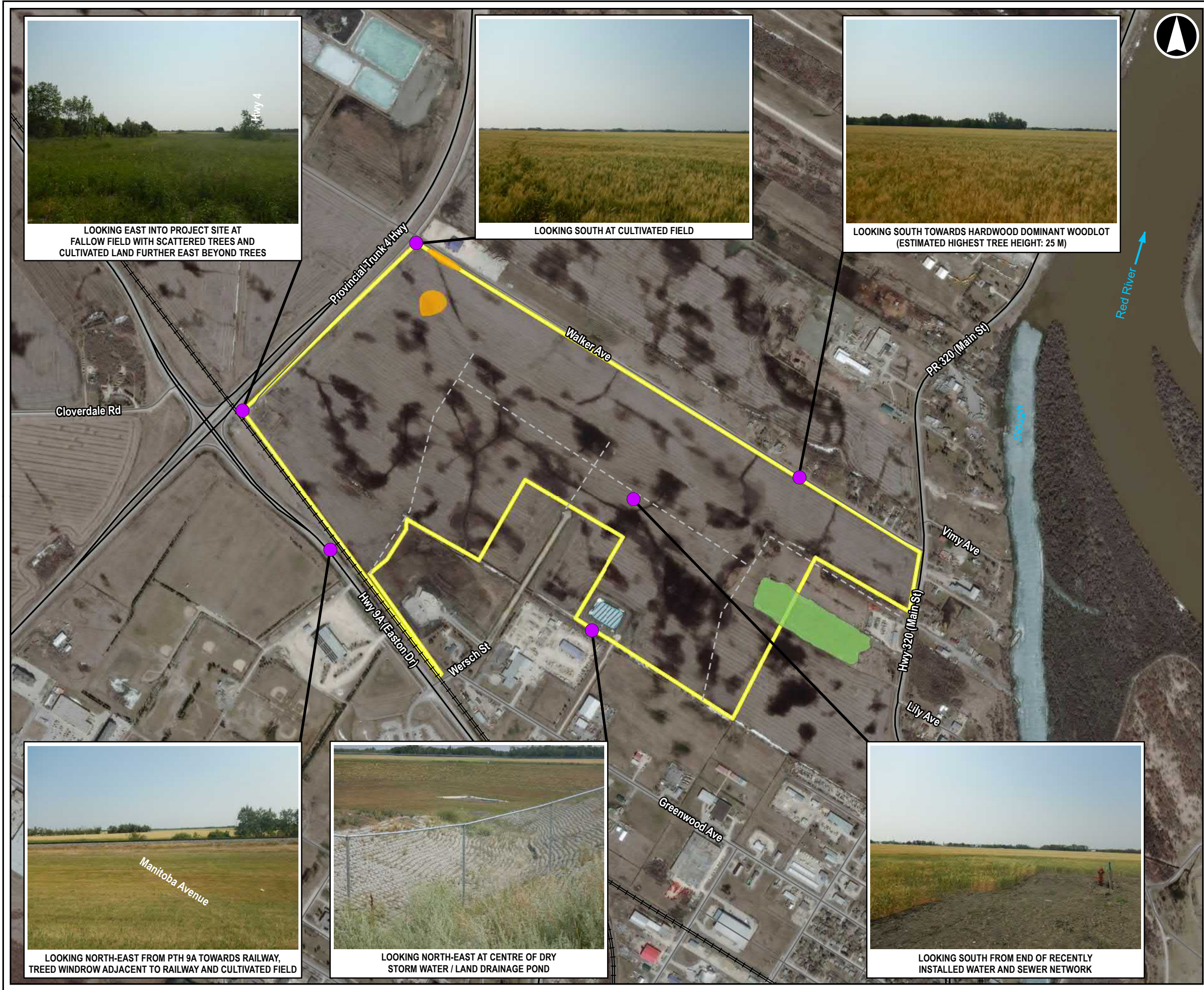
Landcover within the Project Site is primarily cultivated cereal cropland (see attached map with landcover photographs).

I would like to request a heritage screening of the above described project to determine if there are any potential heritage resources that may be affected by the project and to determine if a Heritage Resources Impact Assessment is required.

If you require additional information, please email, or call me at 204-982-9210.

Marlene Gifford, M.Sc., P.Biol., R.P.Bio.
Biologist, Environmental Assessor
Impact Assessment and Permitting, Canada
D +1-204-928-9210
M +1-204-430-5633
marlene.gifford@aecom.com

AECOM
99 Commerce Drive
Winnipeg, Manitoba, Canada



Map Extent

Legend

- PHOTO LOCATION
- WATER & SEWER NETWORK^A
- === RAILWAY
- OCCASIONAL PATCHES OF MILKWEED^B
- ▨ STORM WATER / LAND DRAINAGE POND
- INTERMEDIATE-AGE HARDWOOD FOREST
- PROJECT SITE BOUNDARY

Notes: During the July 27, 2021 site visit, the Project Site was cultivated cereal cropland.

^A Water and sewer network appeared recently installed.

^B Milkweed is required by Monarch butterflies for egg laying. The Monarch is a species of conservation concern.

REPRESENTATIVE LANDCOVER PHOTOGRAPHS (JULY 27, 2021)

CPS SOLAR GLASS FACILITY PROJECT

0 125 250 500

Metres

Datum: NAD 1983 UTM Zone 14N

Source: Esri World Imagery, Water & Sewer Network from CPS

This drawing has been prepared for the use of AECOM's client and may not be used, reproduced or relied upon by third parties, except as agreed by AECOM and its client, as required by law or for use by governmental reviewing agencies. AECOM accepts no responsibility, and denies any liability whatsoever, to any party that modifies this drawing without AECOM's express written consent.

PN#: 60663147	1:10,000 * when printed 11"x17"
---------------	------------------------------------

Appendix X

AECOM