

## *Background*

Swansfleet Alliance filed an Environment Act Proposal in March, 2023 for an irrigation project north of Treherne on the Assiniboine River.

The project was publically advertised as follows (March 13, 2023):

Swansfleet Alliance seeks to build an irrigation project in the Municipality of Norfolk Treherne. They plan to divert water from the Assiniboine River to irrigate four quarter sections of cropland on 8-9-9 WPM. If approved, they will build the project in 2023 and finish by 2024 or 2025.

The Proponent is currently seeking a Development Permit Authorization from Manitoba Environment, Climate and Parks department for up to 666 dam<sup>3</sup> (540 acre-feet), which would allow for irrigation of up to 540 acres annually. The Project is considered a Class 2 development in relation to The Environment Act (i.e., > 200 dam<sup>3</sup> diversion).

## *Proposed Amendment*

Swansfleet Alliance has determined that they would like to amend the proposal as follows, and as illustrated in Attached Maps 3, 6, and 7.

1. Addition of a small irrigation system on SE 18-9-9 W1, irrigating up to 22.1 suitable acres.
2. Modification of irrigated acres in Section 8-9-9 W1, to include swing arms, to irrigate up to the following suitable acres
  - a. NW 8-9-9 W1 - 145.1
  - b. NE 8-9-9 W1 - 155.2
  - c. SW 8-9-9 W1 - 155.2
  - d. SE 8-9-9 W1 - 149.6
3. The modified acres take into account non-irrigation on soils rated poor for General Irrigation. Variable Rate Technology will be utilized to avoid irrigation/fertigation of these areas (highlighted in attached maps).
4. Total area for irrigation to be 627.2 acres. Total water requirement 774 Dam<sup>3</sup> (627 acre-feet).
5. Pipeline to SE 18-9-9 W1 will be aluminum (e.g. overland) connected in future to turnout in SE corner of SE 18-9-9 W1.
6. Intake selected is Option 2.
7. Pipeline route from Option 2 intake to Section 8-9-9 W1, modified only slightly (e.g., alignment and booster pump location, and distribution within 8-9-9W1).

## *Impacts*

The proposed amendment to the proposal will not impact the project proposal given that:

1. Application for additional water will be made to Manitoba Environment, Climate and Parks.
2. Land added in SE 18-9-9 W1 is considered largely irrigable or will be avoided by VRI.
3. Heritage Resource Surveys were undertaken in Fall, 2023 for the new pipeline route and selected intake (North Roots Research, Lisa Bobbie).
4. Impacts are otherwise as described within the filed Environment Act Proposal (March, 2023).

### *Update*

The following is a brief update on the project status.

1. North Roots Research is in process of reporting on Heritage Resource Impact Assessment.
2. Intake development, pump and pipeline construction will take place in spring or summer, 2023.
3. First irrigation will take place in 2024.
4. The selected intake was previously developed by others and will require only minor modifications.
5. The floating intake will not impact the river bed and thus not expected to impact mussels, if they even exist.
6. Negotiations with Manitoba Hydro are ongoing related to power supply.
7. Drainage works have been proposed and accepted by Manitoba Environment and Climate Change (Drainage and Water Control Section) (separate application by Drainage Contractors).

This amendment is respectfully submitted on behalf of Swansfleet Alliance and is to provide additional information required for the draft Environment Act License issued in September 2023 (File 6173).

<https://www.gov.mb.ca/sd/eal/registries/6173/index.html>

For more information or details please contact the undersigned.

Attachments (Maps 3, 6, 7).

Draft Issued December 6, 2023

---

P. Bruce Shewfelt, P.Eng.

PBS Water Engineering Ltd.

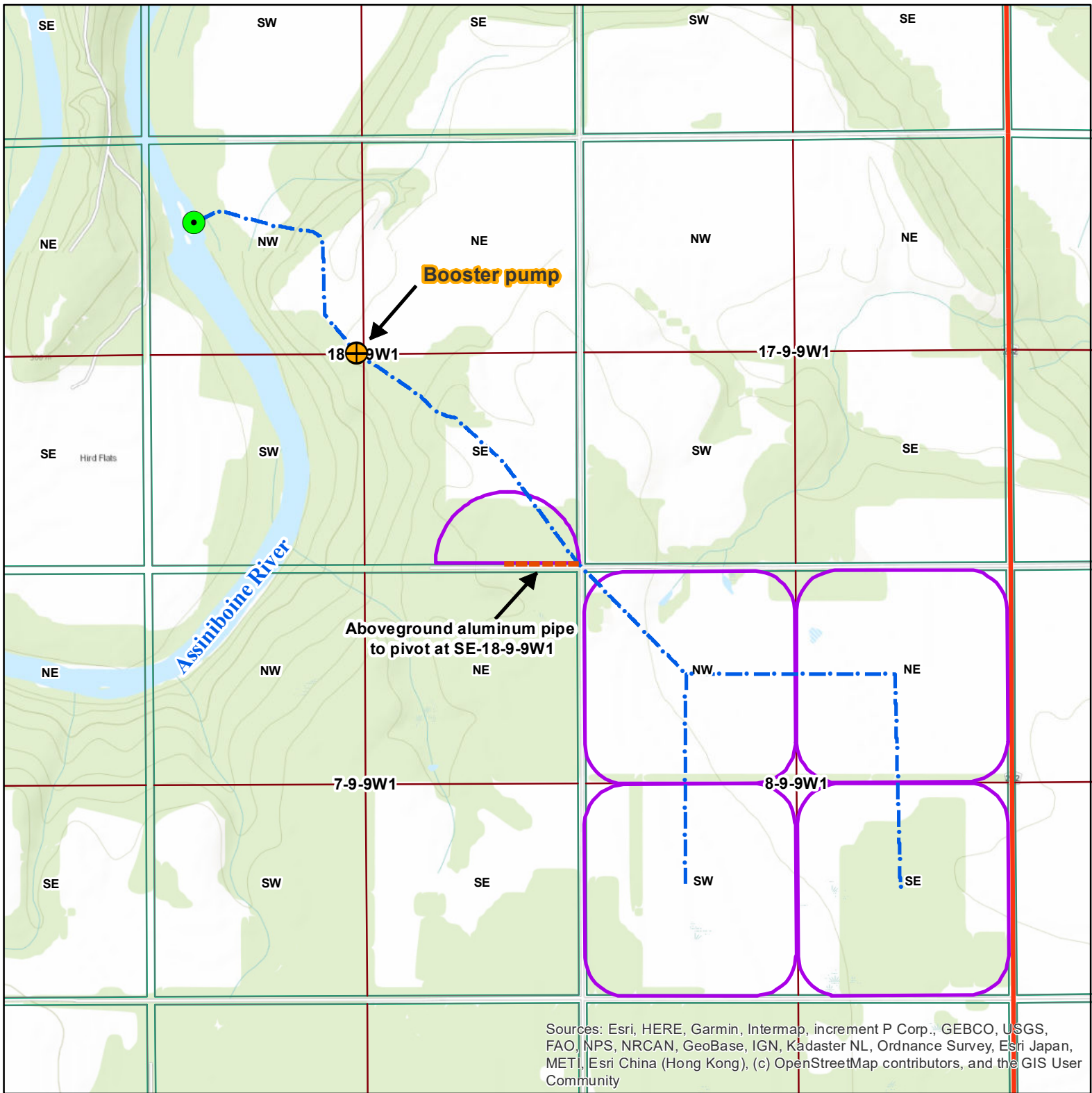
5 Mason Crescent

Morden, MB

R6M 1R4

[shewfeltpbs@outlook.com](mailto:shewfeltpbs@outlook.com)

204 362-5666



Map Number

**3 rev**

Map Name

**Project Infrastructure**

Project Name

**Swansfleet Irrigation Project**

PREPARED BY

**PBS** Water Engineering

DRAWING SCALE

1:20,000

DATE

November 20, 2023

DRAWN/CHECKED

DAW/PBS

**agriearth** consulting ltd.

*Acknowledgements:*

*Original drawing by AgriEarth Consulting Ltd.*

*Data accessed from Manitoba Land Initiative, Province of Manitoba.*

## Legend



Intake Pump



Booster Pump



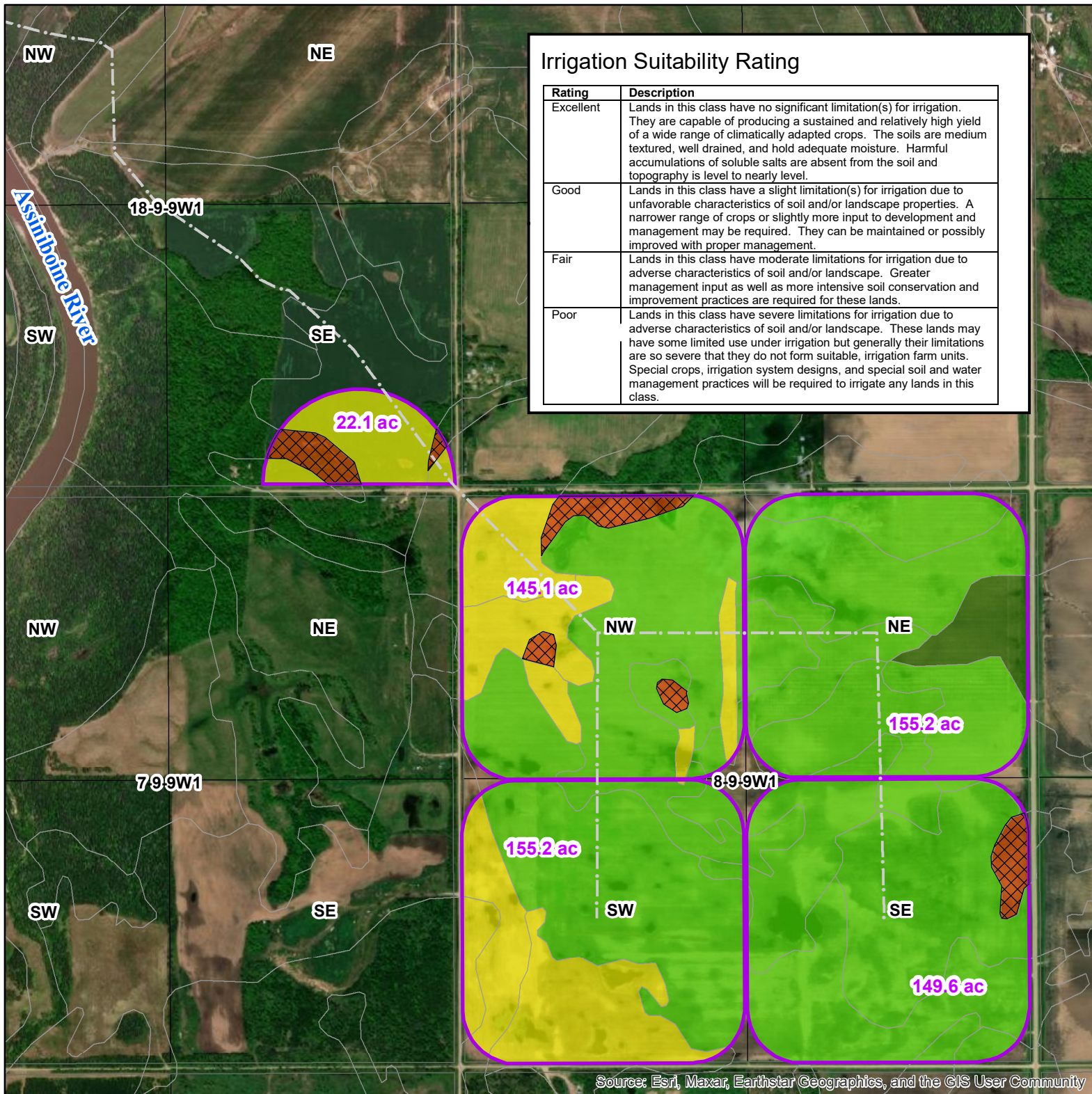
Pipeline



Pivot



Provincial roads



Source: Esri, Maxar, Earthstar Geographics, and the GIS User Community

Map Number

**6 rev**

Map Name

**Irrigation Suitability**

Project Name

**Swansfleet Irrigation Project**

PREPARED BY

**PBS** Water Engineering

DRAWING SCALE

1:15,000

DATE

November 20, 2023

DRAWN/CHECKED

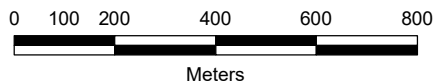
DAW/PBS

**agriearth** consulting ltd.

Acknowledgements:

Original drawing by AgriEarth Consulting Ltd.

Data accessed from Manitoba Land Initiative, Province of Manitoba.



## Legend

--- Pipeline

  Pivot

  Irrigation exclusion area

## Irrigation Suitability

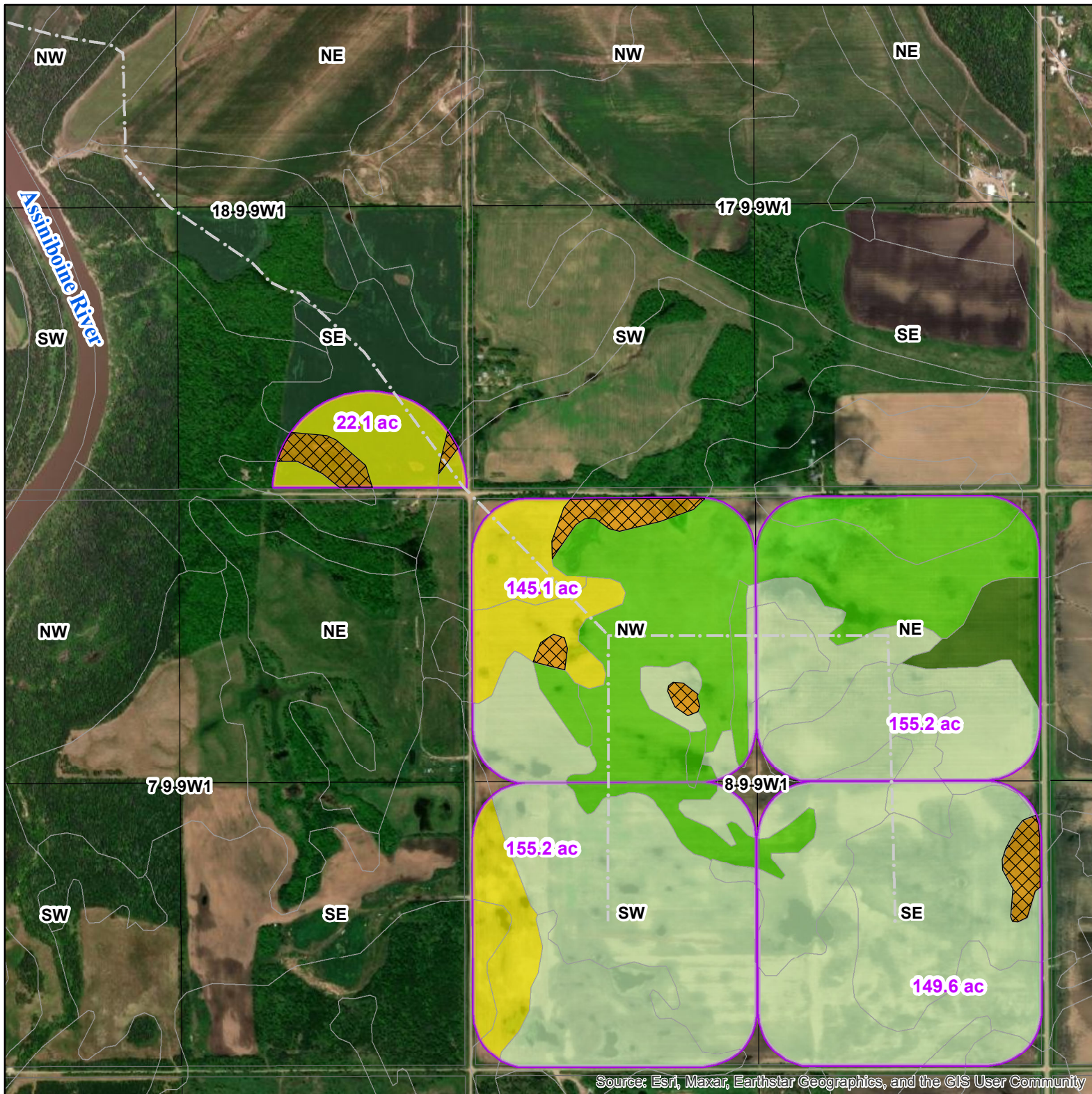
Excellent

Good

Fair

Poor

**Irrigation field area**



Source: Esri, Maxar, Earthstar Geographics, and the GIS User Community

Map Number  
**7 rev** Map Name  
**Land Suitability for Irrigated  
Potato Production**

Project Name

**Swansfleet Irrigation Project**

PREPARED BY  
**PBS** Water  
Engineering

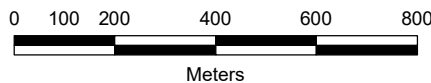
DRAWING SCALE  
1:15,000

DATE  
November 20, 2023

DRAWN/CHECKED  
DAW/PBS

**agriearth**  
consulting ltd.

Acknowledgements:  
Original drawing by AgriEarth Consulting Ltd.  
Data accessed from Manitoba Land Initiative, Province of Manitoba.



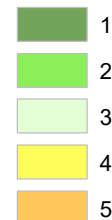
## Legend

--- Pipeline

  Pivot

  Irrigation exclusion area

## Potato Suitability Ratings



**Irrigation  
field  
area**